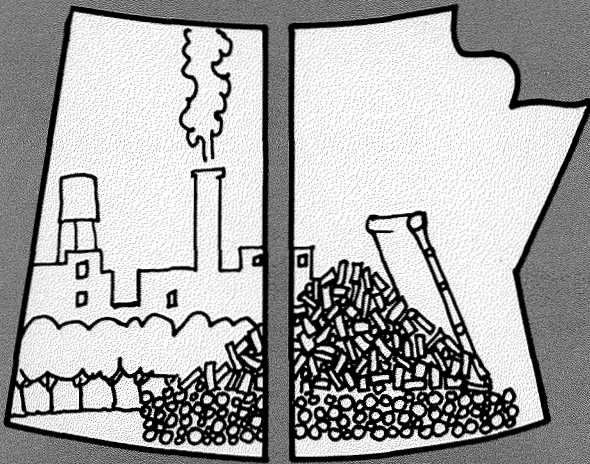
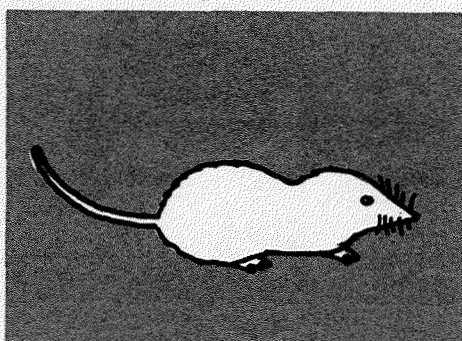
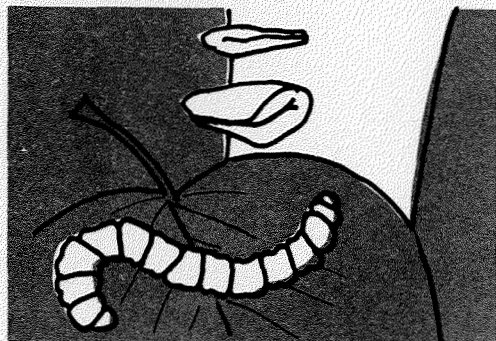
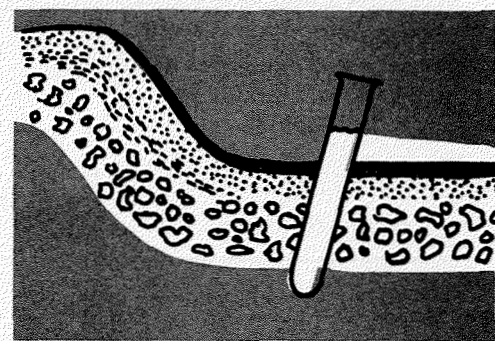
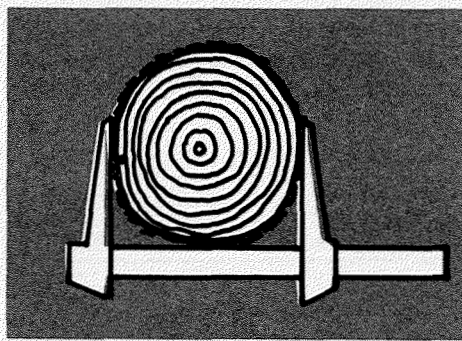




by V.Hildahl R.Pratt A.Campbell



bibliography of FOREST RESEARCH



BIBLIOGRAPHY OF FOREST RESEARCH

MANITOBA-SASKATCHEWAN REGION

CONTENTS

	Page
INTRODUCTION	1
SUBJECT LISTING	2
White spruce	2
Black spruce	4
Jack pine	5
Red pine	7
Larch	9
Aspen and Poplar	11
Miscellaneous species and non-species subjects	13
Annual reports, Insect and Disease Survey, Manitoba-Saskatchewan Region	15
ALPHABETICAL LISTING	16

BIBLIOGRAPHY OF FOREST RESEARCH

MANITOBA-SASKATCHEWAN REGION

by

V. Hildahl, M. Pratt and A. Campbell

INTRODUCTION

This bibliography has been prepared to provide research scientists, resource managers, and practicing foresters with a ready reference to technical literature published by the Manitoba-Saskatchewan Region of the Department of Forestry and Rural Development.

The bibliography is presented in two sections: by tree species and subject, and alphabetically. In the first the references are listed by the main species: white spruce, black spruce, jack pine, red pine, larch, trembling aspen and balsam poplar. Publications not pertaining to the above are listed under "Miscellaneous species and non-species subjects". To further aid the user, publications pertaining to each of the species have been sub-divided into the following subject categories: factors of the environment, biology, silviculture, forest injuries and protection, and forest mensuration. The second section contains an alphabetical listing of the references by author and year of publication.

Revised editions of the bibliography will be prepared at frequent intervals to assure its usefulness.

SUBJECT LISTING

WHITE SPRUCE

(Picea glauca (Moench) Voss)

FACTORS OF THE ENVIRONMENT. BIOLOGY

Cayford and Waldron 1962, Denyer et al 1966, Harrison 1934, Jarvis 1966, Jarvis et al 1966, Mueller-Dombois 1964a, b, 1965, Phelps 1951, Rowe 1953b, c, 1955, Steneker and Jarvis 1963, Vaartaja 1954d, 1957a, 1959a, 1960e, 1963, van Groenewoud 1965, Waldron 1961c, 1962, 1963b, 1964b, 1965b, Zoltai 1967a.

SILVICULTURE

Bedell 1948, Cayford 1957a, 1961b, Cayford and Waldron 1966, Doyle 1954, Haig 1959a, b, 1962, Haig and Cayford 1959, Jameson 1956a, Jameson and Cayford 1964, Jarvis 1963, 1966, Jarvis et al 1966, Johnson 1953, Mueller-Dombois 1964b, Phelps 1948a, b, c, d, 1950, Rowe 1955, Steneker 1963, 1967, Tucker and Jarvis 1967, Waldron 1959a, b, 1961a, c, 1964a, 1965a, b, 1966, Waldron and Cayford 1967, Walker 1967, Zoltai 1967a.

54-year-old white spruce plantation -
Turtle Mountains

FOREST INJURIES AND PROTECTIONGENERAL

Buckner 1963, Cayford and Haig 1961b, Cayford et al 1959, Denyer and Riley 1964a, Laut and Elliott 1966, Lejeune 1945d, 1947c, Reeks 1958b, Richmond 1945b, Richmond and Lejeune 1945, Riley 1953b, Vaartaja 1958b, 1960e.

INSECTSa) BIOLOGY

Barker 1947, 1948b, Barker and Fyfe 1947, Barker et al 1949, Bradley 1949, 1950b, 1951c, Brown 1950a, b, 1951a, b, 1952, Cumming 1953b, c, 1955, Elliott 1963, Elliott and Hancox 1962, Hammond 1951, Hedlin 1954, Hedlin and Hovey 1953, 1954, Heron 1961b, 1962, 1965, Hildahl 1949b, 1964, 1965, 1966, Hovey 1951, 1953, Lejeune 1945b, c, g, 1947d, 1955b, Linquist 1954, Melvin 1967, Peterson 1945b, 1946c, 1947a, c, 1948a, Prentice 1951a, 1955b, Prentice and Hildahl 1955b, Prentice et al 1956, Warren 1954, 1956a, b, d, 1958, 1960b, Warren and Whitney 1951, Whitney 1952a, Wong 1958b, 1960b, 1962, 1963b.

b) IDENTIFICATION

Bradley 1950a, McGuffin 1945a, b, 1947a, Warren 1960a.

c) CONTROL

Hovey 1954, 1956, Lejeune 1946c, 1947a, Liscombe and Lejeune 1949.

FUNGI

Black 1953a, Denyer 1960a, b, 1962, Lejeune 1946d, Riley 1955, Sutton 1967a, Thomas 1954, Timonin 1963, Vaartaja 1953b, 1954a, e, g, 1955e, g, 1956d, 1957b, c, 1958b, Vaartaja and Whitney 1956, Vaartaja and Salisbury 1961, van Groenewoud 1953, 1956, Warren and Whitney 1951, Whitney 1952a, 1961a, b, 1962, 1963a, 1964a, 1965, 1966a, b, Whitney and Belcher 1963, Whitney and van Groenewoud 1952, 1964.

FOREST MENSURATION

Jameson 1961b, 1963, Jameson and Cayford 1964, Jarvis et al 1966, Mueller-Dombois 1965, Pike 1955, Zoltai 1967a, Zoltai et al 1967.

BLACK SPRUCE

(Picea mariana (Mill.) BSP.)FACTORS OF THE ENVIRONMENT. BIOLOGY

Denyer et al 1966, Harrison 1934, Jarvis 1966, Johnson 1956, Mueller-Dombois 1964a, b, 1965, Vaartaja 1954d, 1959a, Waldron 1957, Zoltai 1967a.

SILVICULTURE

Cayford 1960, 1961b, d, Haig 1962, Jameson 1956b, Jameson and Cayford 1964, Jarvis 1961, 1966, Jarvis and Cayford 1961, 1967, Kastrukoff 1952, Mueller-Dombois 1964b, Phelps 1948d, 1950, Waldron and Cayford 1961a, b, Walker 1967, Zoltai 1967a.

FOREST INJURIES AND PROTECTIONGENERAL

Cayford and Haig 1961a, Cayford et al 1959, Denyer and Riley 1964a, Lejeune 1945d, 1946d, Laut and Elliott 1966, Reeks 1958b.

INSECTSa) BIOLOGY

Bradley 1959, Melvin 1967, Prentice 1951a, Prentice and Campbell 1959, Prentice et al 1956, Wong 1958b, 1960b, 1962, 1963b, Wong et al 1959.

b) IDENTIFICATION

McGuffin 1945a, b, 1947a, Warren 1960a.

FUNGI

Denyer 1958, Whitney 1964a.



Measuring a black spruce stand with a relescope

FOREST MENSURATION

Jameson 1961b, 1964a, Jameson and Cayford 1964, Mueller-Dombois 1964b, 1965, Zoltai 1967a, Zoltai et al 1967.

JACK PINE

(Pinus banksiana Lamb.)

FACTORS OF THE ENVIRONMENT. BIOLOGY

Bella 1967b, Cayford 1959a, Cayford and Waldron 1962, 1965, Harrison 1934, Heron 1956, Heron and Nairn 1965, Jameson 1961a, Jarvis 1966, Mueller-Dombois 1964a, b, 1965, Mueller-Dombois and Sims 1966, Ritchie 1961, Sims 1964, Vaartaja 1954d, 1957a, 1959a, Zoltai 1967a.

SILVICULTURE

Adams 1966, Bella 1967a, Cayford 1957b, 1958a, b, 1959a, b, 1960, 1961a, b, c, 1963b, 1964a, 1966, Cayford and Waldron 1963, 1966, Cayford and Dobbs 1967, Haig 1959a, b, 1962, Haig and Cayford 1959, Ives and Warren 1964,



Prescribed burning in a jack pine stand

Jameson 1956a, b, Jameson and Cayford 1964, Jarvis 1966, Johnson 1953, 1955, Kastrukoff 1952, Lawrence and Melvin 1967, Mueller-Dombois 1964b, Phelps 1948d, 1950, Sims 1967, Waldron and Cayford 1961a, Walker 1967, Wilson 1952, 1961, Williams 1960, Zoltai 1967a.

FOREST INJURIES AND PROTECTIONGENERAL

Adams 1966, Buckner 1963, Cayford 1956b, Cayford and Haig 1961a, b, Cayford et al 1959, Denyer and Riley 1964a, Laut and Elliott 1966, Lejeune 1945d, 1947c, Reeks 1958b, Riley 1953b, Rowe 1956a, Vaartaja 1958b, Walker 1967, Williams 1955.

INSECTSa) BIOLOGY

Barker 1947, Barker et al 1949, Bradley 1959, Bradley and Wighton 1959, Campbell et al 1957, Drouin and Wong 1962, Drouin et al 1963b, Elliott and Drouin 1961, Elliott and McDowall 1963, Fyfe and Lejeune 1946, Hedlin and Hovey 1953, 1954, Heron 1951b, 1961b, 1962, Heron and Prentice 1957, Hildahl 1949b, 1966, Ives and Warren 1965, Lawrence and Melvin 1967, Lejeune 1945b, c, f, 1947d, 1950, Lejeune and Black 1947, 1950, Lejeune and Turnock 1948, McDowall and Wong 1962, McDowall et al 1957, Melvin 1967, Nairn and Ives 1965, 1967, Prentice 1955a, Prentice et al 1956, Rabkin and Lejeune 1954, Reeks 1956, 1958a, 1960, Richmond 1945a, Turnock 1951, 1953b, Warren 1956c, 1958, Wong 1958b, 1962, 1963b, Wong and Lawrence 1963, Wong et al 1960, 1966a.

b) IDENTIFICATION

Bradley 1950a, Bradley and Wighton 1959, McGuffin 1945a, b, 1947a, Nairn and Wong 1965, Warren 1960.

c) CONTROL

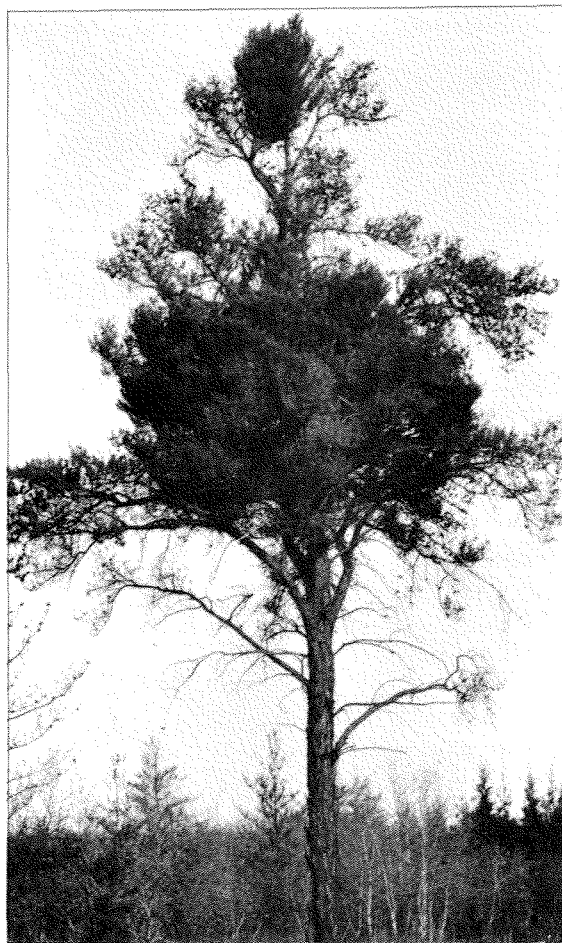
Ives and Warren 1964, Nairn and Ives 1967, Warren 1956b.

FUNGI

Laut 1967, Laut et al 1966, Lawrence and Melvin 1967, Riley 1955, Vaartaja 1954a, 1955c, e, g, 1956a, 1957e, 1958a, b, 1959b, Whitney 1964a, 1965, Zalasky and Riley 1963.

FOREST MENSURATION

Jameson 1961b, 1964b, Jameson and Cayford 1964, Mueller-Dombois 1964b, 1965, Zoltai 1967a, Zoltai et al 1967.



Dwarf mistletoe on jack pine

RED PINE

(Pinus resinosa Ait.)

FACTORS OF THE ENVIRONMENT. BIOLOGY

Cayford 1959a, Harrison 1934, Mueller-Dombois 1964a, b, 1965, Vaartaja 1957a, 1962a, Zoltai 1967a.

SILVICULTURE

Cayford 1956a, 1959a, 1960, 1961b, 1963a, 1964b, Cayford and Haig 1964, Cayford and Jarvis 1963, 1967, Cayford and Waldron 1966, Haig and Cayford 1959, 1960, Ives and Warren 1964, Jameson and Cayford 1964, Mueller-Dombois 1964b, Walker 1967, Zoltai 1967a.



White grub control by applying insecticide to soil at time of machine planting of red pine seedlings.

FOREST INJURIES AND PROTECTIONGENERAL

Cayford 1956b, Cayford and Haig 1961b, Walker 1967.

INSECTSa) BIOLOGY

Barker et al 1949, Bradley 1959, Campbell et al 1957, Hildahl 1949b, Ives and Warren 1965, Lejeune and Turnock 1948, Melvin 1967, McDowall et al 1957, Nairn and Ives 1965, 1967, Prentice 1955a, Prentice et al 1956, Reeks 1958a, Warren 1956c, Wong 1958b, 1962, 1963b.

b) IDENTIFICATION

McGuffin 1945a, b, 1947a, Nairn and Wong 1965.

c) CONTROL

Ives and Warren 1964, Nairn and Ives 1967, Warren and Hildahl 1963, Warren and Ives 1964.

FOREST MENSURATION

Jameson and Cayford 1964, Mueller-Dombois 1965, Zoltai 1967a, Zoltai et al 1967.

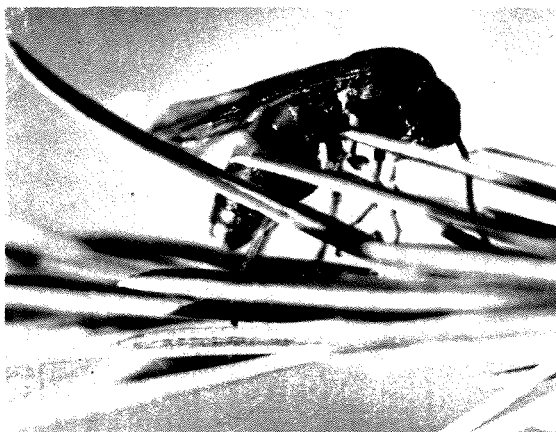
LARCH

(Larix laricina (Du Roi) K. Koch)FACTORS OF THE ENVIRONMENT. BIOLOGY

Harrison 1934, Heron 1953, Ives 1964b, Ives and Nairn 1966a, Lejeune 1948, Lejeune and Martin 1948, McKinnon 1952, Mott et al 1957, Mueller-Dombois 1965, Nairn 1954a, b, 1956, 1958, 1961, Turnock 1955c, 1963b, Vaartaja 1957a, Zoltai 1967a.

SILVICULTURE

Dow 1951, Nairn 1956, Zoltai 1967a.

FOREST INJURIES AND PROTECTION

Female larch sawfly on new tamarack shoot.

GENERAL

Denyer and Riley 1964b, Elliott and Muldrew 1967, Riley 1953b.

INSECTSa) BIOLOGY

Bradley 1959, Burbidge and Lejeune 1950, Canada Dept. Forestry 1964, Drouin et al 1963a, 1964, 1965, 1966, Elliott and Hildahl 1966, Heron 1950, 1951a, c, 1955, 1957, 1960, 1961a, 1966, 1967, Hildahl 1949a, Ives 1954a, b, 1955a, b, 1956, 1957, 1958a, b, 1959, 1960a, b, c, 1961, 1962a, c, 1963, 1964a, c, 1967a, Ives and Prentice 1958, Ives and Turnock 1959, Ives and Nairn 1966b, Lejeune 1945e, 1946a, e, 1947e, 1951a, b, 1955a, b, Lejeune and Filuk 1947, 1948, Lejeune and Wong 1949, Lejeune et al 1955, Melvin 1967, Muldrew 1951a, 1953b, 1956a, 1959, Muldrew and Fell 1948, Nairn 1956, 1961, Nairn and Prentice 1960, Nairn et al 1951, 1962, Peterson 1955, Prentice et al 1956, Turnock 1952, 1954a, b, 1955a, b, 1956a, b, 1959, 1960a, b, 1963a, c, 1964, Turnock and Ives 1962, Wong 1955, 1958b, 1962, 1963b.

b) IDENTIFICATION

Bradley 1950a, McGuffin 1945a, b, 1947a, Wong 1956, 1958a, 1963a.

c) CONTROL

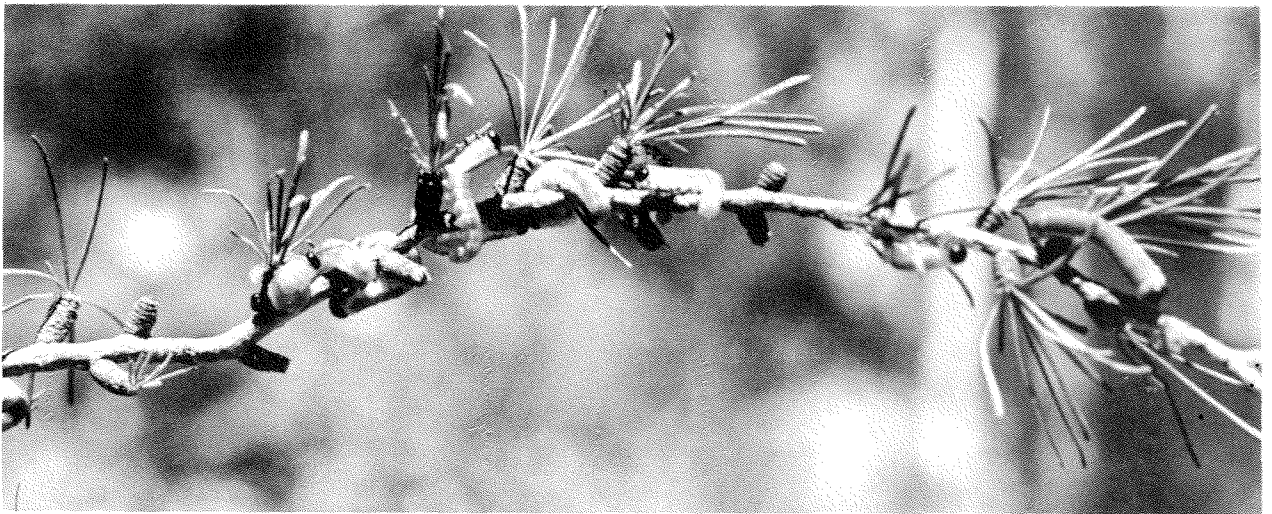
Buckner 1952, 1953a, b, 1955a, 1958b, 1959a, b, 1967a, Buckner and Turnock 1965, Hildahl 1950, 1951a, Hildahl and Lejeune 1952, Ives 1962b, 1967b, Ives and Prentice 1959, Lejeune 1949b, Lejeune and Burbidge 1950, Lejeune and Hildahl 1954, Muldrew 1950, 1951b, 1952, 1953a, 1955, 1956b, 1964, 1967, Muldrew and Turnock 1965, Turnock 1953a, Turnock and Melvin 1963, Turnock and Muldrew 1964a, b, Turnock and Garland 1965.

FUNGI

Vaartaja 1953b, 1955g, Whitney 1964a.

FOREST MENSURATION

Jameson 1961b.



Larch sawfly larvae feeding on tamarack foliage.

ASPEN AND POPLAR

(Populus tremuloides Michx. and P. balsamifera L.)

FACTORS OF THE ENVIRONMENT. BIOLOGY

Harrison 1934, Mueller-Dombois 1964b, 1965, Steneker and Jarvis 1963, Vaartaja 1959a, 1960c, Zoltai 1967a.

SILVICULTURE

Jameson and Cayford 1964, Jarvis et al 1966, Mueller-Dombois 1964b, Phelps 1948d, 1950, Pike 1953, Pratt 1966, Steneker 1964, Steneker and Jarvis 1966, Tucker and Jarvis 1967, Waldron 1959a, 1961b, 1963a, Zoltai 1967a.

FOREST INJURIES AND PROTECTIONGENERAL

Cayford et al 1959, Reeks 1958b, Riley 1953b, Rowe 1956a.

INSECTSa) BIOLOGY

Blais et al 1955, Brown 1949, 1950a, 1951a, b, 1952, Canada Dept. Forestry 1963, Cumming 1954a, Drouin et al 1961, Elliott 1962, 1963, Heron and Prentice 1956, Hildahl 1951b, 1964, 1965, 1966, Hildahl and Reeks 1960, Lejeune 1955b, Melvin 1967, Peterson 1945c, 1948a, Prentice 1951b, 1952, 1953, 1954, 1955c, Prentice and Lalor 1951, Prentice et al 1956, Smereka and Lejeune 1953, Wong 1958b, 1962, 1963b, 1964, Wong and McLeod 1965a, b, Wong and Melvin 1967, Wong et al 1963, 1964, 1965.

b) IDENTIFICATION

McGuffin 1945a, b, Wong 1957.

c) CONTROL

Elliott and Wong 1966, Turnock 1961.



Forest tent caterpillar infestation of trembling aspen.

FUNGI

Black 1953b, c, Black and Kristapovich 1954, Denyer 1962, Riley 1952b, 1955, Whitney 1964a, Zalasky 1964a, b, c, 1965a, b, 1966, Zalasky and Fenn 1965.

FOREST MENSURATION

Bella and Jarvis 1967, Jameson 1963, Jameson and Cayford 1964, Johnson 1957, Mueller-Dombois 1965, Zoltai 1967a, Zoltai et al 1967.

MISCELLANEOUS SPECIES AND NON SPECIES SUBJECTS

FACTORS OF THE ENVIRONMENT. BIOLOGY

Harrison 1934, Mueller-Dombois 1963, 1964b, 1965, Roller 1966, 1967, Rowe 1950, 1953a, 1956b, c, Timonin 1964, Turnock and Ives 1957, Vaartaja 1954c, d, 1956c, 1957a, 1959a, c, 1960c, f, 1961a, b, c, 1962a, van Groenewoud 1961, Waldron 1964b, Weegar and van Groenewoud 1965, Zalasky 1962, Zoltai 1967a, b.

SILVICULTURE

Bella 1967a, Cram and Vaartaja 1957, Haig 1959a, Haig and Cayford 1959, Jameson 1956a, Jameson and Cayford 1964, Johnson 1953, Mueller-Dombois 1964b, Vaartaja 1954b, 1958c, 1960b, Waldron 1959a, Wilner and Vaartaja 1958.

FOREST INJURIES AND PROTECTIONGENERAL

Cayford and Haig 1961a, b, Cayford et al 1959, Hord et al 1957, Reeks 1958b, Riley 1953b, Vaartaja 1958b.

INSECTSa) BIOLOGY

Barker et al 1949, Bradley 1950b, 1951b, 1952, 1959, 1961, 1962a, b, Brown 1949, 1950a, b, 1951a, b, 1952, 1953b, Brown and Lindquist 1953, Campbell et al 1957, Elliott 1963, Elliott and Hancox 1962, Hammond 1949, 1950a, b, Hedlin 1949, 1950a, b, 1954, 1955, Hedlin and Hovey 1953, 1954, Heron 1951b, 1958, Heron and Prentice 1957, Hildahl 1964, 1965, 1966, Hildahl and Wong 1965, Ives and Warren 1965, Lejeune 1955b, Lejeune and Turnock 1948, McDowall et al 1957, Melvin 1960a, b, 1962, 1966, Melvin et al 1967a, b, Muldrew 1958, Peterson 1945c, d, 1946b, 1947b, 1948a, b, c, 1957, 1958, 1960, Prentice 1951a, 1955a, b, Prentice and Nairn 1958, Prentice and Reeks 1959, Prentice et al 1956, Reeks 1958a, Robinson and Bradley 1962, Turnock 1949, Warren 1956b, c, 1958, Wong 1950a, b, 1951, 1954, 1958b, 1962, 1963b, Wong and Melvin 1965, Wong and Benson 1965, Wong and McLeod 1965b, Wong et al 1965.

b) IDENTIFICATION

Bradley 1950a, 1951a, 1953, 1956a, b, 1957, 1960, 1962a, b, 1963, 1965a, b, Hottes and Bradley 1953, MacGillivray and Bradley 1961, McGuffin 1945a, b, Warren 1960a, Wong 1960a, 1966, 1967, Wong and Ross 1960, Wong et al 1966b.

c) CONTROL

Brown 1953a, Buckner 1953c, d, 1966a, 1967a, Melvin and Prentice 1959, Melvin and Elliott 1962, Melvin and Turnock 1965.

FUNGI

Cram and Vaartaja 1957, Denyer and Etheridge 1956, Laut 1966, Melvin et al 1967a, b, Riley 1952a, 1953a, 1955, Saksena 1961a, b, Sutton 1965, 1966, 1967b, c, d, Sutton and Pirozynski 1965, 1966, Sutton and Patil 1966, Sutton and Seller 1966, Sutton and Waterson 1966, Sutton and Brambilla 1967, Timonin 1962, 1964, Vaartaja 1953a, b, 1954a, f, 1955a, b, c, d, f, 1956a, b, 1957d, e, f, 1958b, c, 1959b, 1960a, c, d, 1964, Vaartaja and Cram 1956, Vaartaja and Salisbury 1961, Vaartaja et al 1961, 1964, Whitney 1952b, 1963b, 1964a, b.

MAMMALS

Buckner 1955b, c, 1957a, b, 1958a, 1959c, 1961, 1962, 1963, 1964a, b, c, 1966b, Buckner and Ray 1964.

FOREST MENSURATION

Gimbarzevsky 1966, Jameson and Cayford 1964, Mueller-Dombeis 1965, Pike 1955, Turnock and Ives 1957, Zoltai et al 1967.

OTHERS

Barker 1948a, Buckner 1967b, Cumming 1950a, b, 1953a, 1954b, Elliott 1965, Harrison 1934, Kemp et al 1965, Lejeune 1946b, 1947b, 1948a, 1949a, c, d, 1951c, 1953, Lindquist 1952, 1954, MacNeill and Zalasky 1957, McGuffin 1946, 1947b, McGuffin and Barker 1945, Peterson 1946a, d, 1949a, Riley 1951, 1953c, Sandercock 1948, Turnock 1957, Turnock and Prentice 1950, Vaartaja 1960g, 1961c, 1962b, Vaartaja and Saksena 1961, van Greenewoud 1960, 1963, Webb 1963, Wong and Turnock 1949, Wong et al 1966b.

ANNUAL REPORTS
INSECT AND DISEASE SURVEY
MANITOBA-SASKATCHEWAN REGION
1936-1966

- 1936 - Brown
- 1937 - Brown
- 1938 - Brown
- 1939 - Brown
- 1940 - Brown
- 1941 - Brown
- 1942 - Brown
- 1943 - Richmond and Smith, Peterson
- 1944 - Richmond and McGuffin, Peterson
- 1945 - Lejeune, Peterson
- 1946 - McGuffin and Barker, Peterson and Sandercock
- 1947 - Barker and Wong, Sandercock and Peterson
- 1948 - Barker, Sandercock and Cumming
- 1949 - Wong et al, Brown and Cumming
- 1950 - Wong et al, Brown and Cumming
- 1951 - Wong et al, Brown and Cumming, Riley et al
- 1952 - Wong et al, Thomas, Brown and Cumming
- 1953 - Prentice and Hildahl, Thomas, Brown and Cumming
- 1954 - Prentice and Hildahl, Zalasky
- 1955 - Prentice and Hildahl, Zalasky
- 1956 - Prentice and Hildahl, Zalasky and Riley
- 1957 - Prentice and Hildahl
- 1958 - Prentice and Hildahl, Zalasky
- 1959 - Prentice and Hildahl, Zalasky
- 1960 - Prentice and Hildahl, Zalasky
- 1961 - Elliott and Hildahl, Riley and Zalasky
- 1962 - Elliott and Hildahl, Riley and Hildahl
- 1963 - Elliott and Hildahl, Riley and Hildahl
- 1964 - Elliott and Hildahl, Laut and Hildahl
- 1965 - Elliott and Laut
- 1966 - Elliott, Laut and Brandt

ALPHABETICAL LISTING

- Adams, J.L. 1966. Prescribed burning techniques for site preparation in cut-over jack pine in southeastern Manitoba. Pulp and Paper Magazine of Canada, Woodl. Rev., Dec., 574-584.
- Barker, R.B. 1947. Budworm pupal parasite survey. Canada Dept. Agriculture, Sci. Serv., Div. Ent., Bi-monthly Prog. Rept. 3(1):2.
- _____ 1948a. Manitoba Paper Company men visit the Winnipeg Laboratory. Canada Dept. Agriculture, Sci. Serv., Div. Ent., Bi-monthly Prog. Rept. 4(3):2.
- _____ 1948b. Forest Insect Survey. Canada Dept. Agriculture, Sci. Serv., Div. Ent., Bi-monthly Prog. Rept. 4(4):2.
- _____ 1948c. Annual report of the Forest Insect Survey. Canada Dept. Agriculture, Sci. Serv., Div. Ent., p. 73-89.
- Barker, R.B. and H.A. Fyfe. 1947. A mixed infestation in the Spruce Woods Forest Reserve, Manitoba. Canada Dept. Agriculture, Sci. Serv., Div. Ent., Bi-monthly Prog. Rept. 3(4):3.
- Barker, R.B. and H.R. Wong. 1947. Annual report of the Forest Insect Survey. Canada Dept. Agriculture, Sci. Serv., Div. Ent., p. 64-79.
- Barker, R., V. Hildahl and A. Knight. 1949. Plantation survey. Canada Dept. Agriculture, Sci. Serv., Div. Ent., Bi-monthly Prog. Report. 5(1):2.
- Bedell, G.H.D. 1948. White spruce reproduction in Manitoba. Canada Dept. Mines and Resources, Mines, Forests and Scientific Services Branch, Dom. For. Serv., Sil. Res. Note No. 87, 16 p.
- Bella, I.E. 1967a. Development of jack pine and Scots pine in the Spruce Woods Forest Reserve, Manitoba. Canada Dept. Forestry and Rural Development, For. Br., Dept. Publ. No. 1171, 15 p.
- _____ 1967b. Crown width of diameter relationship of open-growing jack pine on four site types in Manitoba. Canada Dept. Forestry and Rural Development, Bi-monthly Res. Notes 23:5-6.
- Bella, I.E. and J.M. Jarvis. 1967. High total productivity of a young aspen stand in Manitoba. Pulp and Paper Magazine of Canada, Woodl. Rev., October 432, 437.
- Black, R.L. 1953a. Red patch disease in seedbeds. Canada Dept. Agriculture, Sci. Serv., Div. Ent., Bi-monthly Prog. Rept. 9(4):3.

- Black, R.L. 1953b. A white trunk rot of poplar caused by "Fungus A". Canada Dept. Agriculture, Sci. Serv., Div. For. Biol., Bi-monthly Prog. Rept. 9(5):2.
- _____ 1953c. Radulum casearium, a poplar decay fungus. Canada Dept. Agriculture, Sci. Serv., Div. Ent., Bi-monthly Prog. Rept. 9(4):3.
- Black, R.L. and P.J. Kristapovich. 1954. Decay of trembling aspen in Manitoba and eastern Saskatchewan. Interim Report, Canada Dept. Agriculture, Sci. Serv., For. Biol. Div., 27 p.
- Blais, J.R., R.M. Prentice, W.L. Sippell, and D.R. Wallace. 1955. Effects of weather on the forest tent caterpillar, Malacosoma disstria Hbn. in Central Canada in the spring of 1953. Canad. Ent. 87:1-8.
- Bradley, G.A. 1949. The yellow headed spruce sawfly, Pikonema alaskensis (Roh.) Canada Dept. Agriculture, Sci. Serv., Div. Ent., Bi-monthly Prog. Rep. 5(5):2.
- _____ 1950a. Notes on the conifer aphids, genus Cinara. Canada Dept. Agriculture, Sci. Serv., Div. Ent., Bi-monthly Prog. Rept. 6(3):2.
- _____ 1950b. Yellow-headed spruce sawfly, Pikonema alaskensis (Roh.). Canada Dept. Agriculture, Sci. Serv., Div. Ent., Bi-monthly Prog. Rept. 6(6):2.
- _____ 1951a. A field key to the species of Cinara (Homoptera: Aphididae) of Canada east of the Rockies. Canad. Ent. 83:333-335.
- _____ 1951b. Boxelder aphid, Periphyllus negundinis (Thomas). Canada Dept. Agriculture, Sci. Serv., Div. For. Biol., Bi-monthly Prog. Rep. 7(5):3.
- _____ 1951c. Notes on the parasitism of the yellow-headed spruce sawfly, Pikonema alaskensis (Roh.) (Hymenoptera: Tenthredinidae). Canad. Ent. 83:130-131.
- _____ 1952. Caragana aphid. Canada Dept. Agriculture, Sci. Serv., Div. Ent., Bi-monthly Prog. Rept. 8(1):3.
- _____ 1953. A new species of Cinara (Homoptera: Aphididae) from Saskatchewan. Canad. Ent. 85:431-432.
- _____ 1956a. Three new species of the genus Cinara Curtis (Homoptera: Aphididae) from Larix spp. Canad. Ent. 88:492-495.

- Bradley, G.A. 1956b. Two new species of the genus Cinara Curtis (Homoptera: Aphididae) from Picea mariana (Mill.) B.S.P. *Canad. Ent.* 88: 706-708.
- _____ 1957. Aphids of the genus Cinara Curtis in Canada. Canada Dept. Agriculture, For. Biol. Div., Bi-monthly Prog. Rept. 13(5):1.
- _____ 1959. Feeding sites of aphids of the genus Cinara Curtis (Homoptera: Aphididae) in northwestern Ontario. *Canad. Ent.* 91:670-671.
- _____ 1960. A new species of the genus Cinara Curtis (Homoptera: Aphididae) from Tsuga heterophylla (Raf.) Sarg. *Canad. Ent.* 92:605-608.
- _____ 1961. A study of the systematics and biology of aphids of the genus Cinara Curtis in Canada. Ph.D. thesis (McGill). Canada Dept. Forestry, For. Ent. and Path. Br., For. Ent. Lab., Winnipeg. Int. Rept. 110 p.
- _____ 1962a. Three new species of Cinara Curtis (Homoptera: Aphididae) from central Canada. *Canad. Ent.* 94:1175-1182.
- _____ 1962b. Aphid behaviour. Canada Dept. Agriculture, Sci. Serv., Div. For. Biol., Bi-monthly Prog. Rept. 18(1):3.
- _____ 1963. Two new species of Cinara Curtis (Homoptera: Aphididae) from Juniperus horizontalis Moench. *Canad. Ent.* 95:287-291.
- _____ 1965a. A new species of Cupressobium (Homoptera: Lachnidae) from Hawaii. *Canad. Ent.* 97:668-670.
- _____ 1965b. A new species of aphid (Homoptera: Aphididae) from Sorbus. *Canad. Ent.* 97:834-836.
- Bradley, G.A. and D.C. Wighton. 1959. Description and life history of a new species of Cinara (Homoptera: Aphididae) from Pinus banksiana Lamb. *Canad. Ent.* 91:453-456.
- Brown, A.W.A. 1936-1937-1938. Annual report of the Forest Insect Survey. Canada Dept. Agriculture, Res. Br., For. Biol. Div., p. 13-20, 36-48.
- _____ 1939. Annual report of the Forest Insect Survey. Canada Dept. Agriculture, Sci. Serv., Div. Ent., 37 p.

- Brown, A.W.A. 1940. Annual report of the Forest Insect Survey. Canada Dept. Agriculture, Sci. Serv., Div. Ent., 27 p.
- _____ 1941. Annual report of the Forest Insect Survey. Canada Dept. Agriculture, Sci. Serv., Div. Ent., 23 p.
- _____ 1942. Annual report of the Forest Insect Survey. Canada Dept. Agriculture, Sci. Serv., Div. Ent. 12 p.
- Brown, C.E. 1949. Western willow leaf beetle. Canada Dept. Agriculture, Sci. Serv., Div. Ent., Bi-monthly Prog. Rept. 5(4):3.
- _____ 1950a. Forest Insect Survey. Canada Dept. Agriculture, Sci. Serv., Div. Ent., Bi-monthly Prog. Rept. 6(3):2.
- _____ 1950b. Strawberry root weevil. Canada Dept. Agriculture, Sci. Serv., Div. Ent., Bi-monthly Prog. Rept. 6(5):3.
- _____ 1951a. Forest Insect Survey. Canada Dept. Agriculture, Sci. Serv., Div. For. Biol., Bi-monthly Prog. Rept. 7(3):2.
- _____ 1951b. Forest Insect Survey Notes. Canada Dept. Agriculture, Sci. Serv., Div. For. Biol., Bi-monthly Prog. Rept. 7(2):2.
- _____ 1952. Forest Insect Survey Notes. Canada Dept. Agriculture, Sci. Serv., Div. For. Biol., Bi-monthly Prog. Rept. 8(5):2.
- _____ 1953a. Coccinellid predators of scale insects. Canada Dept. Agriculture, Sci. Serv., Div. For. Biol., Bi-monthly Prog. Rept. 9(1):3.
- _____ 1953b. A study of the factors influencing population fluctuations in the fall cankerworm. Canada Dept. Agriculture, Sci. Serv., For. Biol. Div., For. Biol. Lab., Indian Head, Sask. Int. Rept. 1953, 25 p.
- Brown, C.E. and M.E.P. Cumming. 1949. Annual report of the Forest Insect Survey, Canada Dept. Agriculture, Sci. Serv., Div. Ent., p. 85-96.
- _____ 1950. Annual report of the Forest Insect Survey. Canada Dept. Agriculture, Sci. Serv., Div. For. Biol., p. 83-95.
- _____ 1951. Annual report of the Forest Insect and Disease Survey. Canada Dept. Agriculture, Sci. Serv., Div. For. Biol., p. 83-93.
- _____ 1952. Annual report of the Forest Insect and Disease Survey. Canada Dept. Agriculture, Sci. Serv., Div. For. Biol., p. 100-111.

- Brown, C.E. and M.E.P. Cumming. 1953. Annual report of the Forest Insect and Disease Survey. Canada Dept. Agriculture, Sci. Serv., For. Biol. Div., p. 112-120.
- Brown, C.E. and O.H. Lindquist. 1953. The spotless fall webworm. Canada Dept. Agriculture, Sci. Serv., Div. For. Biol., Bi-monthly Prog. Rept. 9(4):2.
- Buckner, C.H. 1952. Predation of larch sawfly by frogs. Canada Dept. Agriculture, Sci. Serv., Div. For. Biol., Bi-monthly Prog. Rept. 8(5):1.
- _____ 1953a. Predation of larch sawfly by birds. Canada Dept. Agriculture, Sci. Serv., Div. For. Biol., Bi-monthly Prog. Rept. 9(1):2.
- _____ 1953b. Small mammals as predators of larch sawfly. Canada Dept. Agriculture, Sci. Serv., Div. For. Biol., Bi-monthly Prog. Rept. 9(6):3.
- _____ 1953c. (Chairman). Symposium on predators of insects. Proc. Ent. Soc. Man. 9:12.
- _____ 1953d. The role of small mammals as predators of forest insects. Proc. Ent. Soc. Man. 9:13.
- _____ 1955a. Small mammals as predators of sawflies. Canad. Ent. 87:121-123.
- _____ 1955b. A simple permanent live trap plot for shrews. J. Mammal. 36:286.
- _____ 1955c. Small mammal populations on a changing site. Canada Dept. Agriculture, Sci. Serv., For. Biol. Div., Bi-monthly Prog. Rept. 11(5):2.
- _____ 1957a. Population studies on small mammals of southeastern Manitoba. J. Mammal. 38:87-97.
- _____ 1957b. Home range of Synaptomys cooperi. J. Mammal. 38:132.
- _____ 1958a. Cuterebrids (Cuterebra grisea Coq.) attacking small mammals. Canada Dept. Agriculture, Sci. Serv., For. Biol. Div., Bi-monthly Prog. Rept. 14(3):2.
- _____ 1958b. Mammalian predators of the larch sawfly in eastern Manitoba. Proc. 10th Internat. Congr. Entomol. 4:353-361.
- _____ 1959a. The assessment of larch sawfly cocoon predation by small mammals. Canad. Ent. 91:275-282.

- Buckner, C.H. 1959b. Mortality of cocoons of the larch sawfly, Pristiphora erichsonii (Htg.) in relation to distance from small mammal tunnels. *Canad. Ent.* 91:535-542.
- _____ 1959c. Water consumption of two species of shrews. Canada Dept. Agriculture, Res. Br., For. Biol. Div., Bi-monthly Prog. Rept. 15(5):2-3.
- _____ 1961. The pale big brown bat in Manitoba. *J. Mammal.* 42:529.
- _____ 1962. Preliminary studies of fleas (siphonaptera) attacking small mammals in southeastern Manitoba. *Proc. Ent. Soc. Man.* 18:40-41.
- _____ 1963. The role of small mammals in the destruction of tree seeds. Canada Dept. Forestry, For. Ent. and Path. Br., For. Ent. Lab., Winnipeg. Infor. Rept. 8 p.
- _____ 1964a. Metabolism, food capacity, and feeding behavior in four species of shrews. *Can. Jr. Zool.* 42:259-279.
- _____ 1964b. Fleas (Siphonaptera) of Manitoba mammals. *Canad. Ent.* 96:850-856.
- _____ 1964c. Preliminary trials of a camera recording device for the study of small mammals. *Canadian Field-Nat.* 78:77-79.
- _____ 1966a. The role of vertebrate predators in the biological control of forest insects. *Ent. Soc. Amer., Ann. Rev. Ent.* 11:449-470.
- _____ 1966b. Populations and ecological relationships of shrews in tamarack bogs of southeastern Manitoba. *J. Mammal.* 47:181-194.
- _____ 1967a. Avian and mammalian predators of forest insects. *Entomographa.* 12:491-501.
- _____ 1967b. The estimation of energy flow through the populations of birds. I.B.P. Symposium on methods of studying terrestrial productivity. Warsaw. (In press.)
- Buckner, C.H. and D.G.H. Ray. 1964. Studies on the introduced shrew, Sorex cinereus cinereus Kerr, in Newfoundland. Canada Dept. Forestry, For. Ent. & Path. Br., For. Ent. Lab., Winnipeg. Int. Res. Rept. 19 p.
- Buckner, C.H. and W.J. Turnock. 1965. Avian predation on the larch sawfly, Pristiphora erichsonii (Htg.) (Hymenoptera: Tenthredinidae). *Ecol.* 46:223-236.

Burbidge, D. and R.R. Lejeune. 1950. The effects of moisture on larch sawfly cocoons. Canada Dept. Agriculture, Sci. Serv., Div. Ent., Bi-monthly Prog. Rept. 6(1):2.

Canada Dept. Forestry. 1963. The forest tent caterpillar in Manitoba and Saskatchewan. Canada Dept. Forestry, For. Ent. & Path. Br., For. Ent. Lab., Winnipeg. Infor. Rept. 6 p.

1964. Population dynamics of the larch sawfly. Canad. Ent. 96:160-161.

Campbell, A.E., L.L. McDowall and R.M. Prentice. 1957. White grubs attacking pine transplants in the Agassiz Forest Reserve, Manitoba. Canada Dept. Agriculture. Sci. Serv., For. Biol. Div., Int. Rept. 2. 13 p.

Cayford, J.H. 1956a. Red pine in Manitoba. Canada Dept. Northern Affairs and National Resources. For. Br., For. Res. Div., Unpublished Rept. 25 p.

1956b. Notes on browsing damage. Canada Dept. Northern Affairs and National Resources, For. Br., For. Res. Div., S & M 56-7, 10 p.

1957a. Influence of the aspen overstorey on white spruce growth in Saskatchewan. Canada Dept. of Northern Affairs and National Resources, For. Br., For. Res. Div., Tech. Note No. 58. 12 p.

1957b. Jack pine regeneration - a review of literature. Canada Dept. Northern Affairs and National Resources, For. Br., For. Res. Div. S & M 57-9.

1958a. Scarifying for jack pine regeneration in Manitoba. Canada Dept. Northern Affairs and National Resources, For. Br., For. Res. Div., Tech. Note No. 66. 14 p.

1958b. Seeding jack pine, Sandilands Forest Reserve, Manitoba. Canada Dept. Northern Affairs and National Resources, For. Br., For. Res. Div. S & M 58-5.

1959a. Germination and survival of jack pine and red pine after scarification in southeastern Manitoba. Canada Dept. Northern Affairs and National Resources, For. Br., For. Res. Div., Tech. Note No. 78. 13 p.

1959b. Seeding jack pine on the Sandilands Forest Reserve, Manitoba, 1925 to 1955. Canada Dept. Northern Affairs and National Resources, For. Br., For. Res. Div., Tech. Note No. 79. 18 p.

- Cayford, J.H. 1960. A review of forest research on the Sandilands Forest Reserve. Canada Dept. Northern Affairs and National Resources, For. Br., For. Res. Div., Mimeo 60-3. 13 p.
-
- 1961a. Broadcast seeding jack pine at weekly intervals in Manitoba. Canada Dept. Forestry, For. Res. Br., Tech. Note No. 106. 12 p.
-
- 1961b. Furrowing improves first year survival of planted spruce and pine in Manitoba. United States Dept. of Agriculture, For. Serv., Tree Planters Notes No. 48. 2 p.
-
- 1961c. Results of a 1927 jack pine thinning in Saskatchewan. Canada Dept. Forestry, For. Res. Br., Tech. Note No. 107. 13 p.
-
- 1961d. Five-year results of clear cutting and partial cutting in black spruce stands on the Sandilands Forest Reserve, Manitoba. Canada Dept. Forestry, For. Res. Br., Mimeo 61-1. 32 p.
-
- 1963a. Reproduction and residual stand development following cutting in red pine-jack pine stands in Manitoba. Canada Dept. Forestry, For. Res. Br., Dept. For. Publ. No. 1010. 19 p.
-
- 1963b. Some factors influencing jack pine regeneration after fire in southeastern Manitoba. Canada Dept. Forestry, For. Res. Br., Dept. For. Publ. No. 1016. 16 p.
-
- 1964a. Results of a 1921 jack pine thinning in western Manitoba. Canada Dept. Forestry, For. Res. Br., Dept. For. Publ. No. 1077. 8 p.
-
- 1964b. Red pine seedfall in southern Manitoba. Canada Dept. Forestry, For. Res. Br., Contr. No. 547, For. Chron. 40:78-85.
-
1966. Operational trials of regeneration methods for jack pine in southeastern Manitoba. Canada Dept. Forestry Publ. No. 1165. 23 p.
- Cayford, J.H. and R.A. Haig. 1961a. Glaze damage in forest stands in southeastern Manitoba. Canada Dept. Forestry, For. Res. Br., Tech. Note No. 102. 16 p.
-
- 1961b. Mouse damage to forest plantations in southeastern Manitoba. J. Fr. 59:124-125.
-
1964. Survival and growth of a 1949-1962 red pine plantation in southeastern Manitoba. Canada Dept. Forestry, For. Res. Br. Publ. No. 1093. 16 p.

- Cayford, J.H. and R.M. Waldron. 1962. Some effects of leaf and needle litter on greenhouse germination of white spruce and jack pine seed. For. Chron. 38:229-231.
- Cayford, J.H. and J.M. Jarvis. 1963. Furrowing and sheltering to improve early survival of planted red pine on dry sites, southeastern Manitoba. Tree Planters' Notes No. 59:21-24.
- Cayford, J.H. and R.M. Waldron. 1963. Regeneration trials with jack pine on clay soils in Manitoba. For. Chron. 39:398-400.
-
- _____ 1965. Multiple jack pine seedlings. Canad. J. Bot. 43:481-482.
-
- _____ 1966. Storage of white spruce, jack pine, and red pine seed treated with Arasan, Endrin, and aluminum flakes. United States Dept. Tree Planters' Notes 77:12-16.
- Cayford, J.H. and R.C. Dobbs. 1967. Germination and early survival of jack pine on three sites in southeastern Manitoba. Canada Dept. Forestry and Rural Development, Bi-monthly Res. Notes 23:6-7.
- Cayford, J.H. and J.M. Jarvis. 1967. Fertilizing with ammonium nitrate improves red pine seed production. J. For. 65:402-403.
- Cayford, J.H., V. Hildahl, L.D. Nairn and M.P. Wheaton. 1959. Injury to trees from winter drying and frost in Manitoba and Saskatchewan in 1958. For. Chron. 35:282-290.
- Cram, W.H. and O. Vaartaja. 1957. Rate and timing of fungicidal soil treatments. Phytopathology 47:169-173.
- Cumming, Margaret E.P. 1950a. Forest Insect Survey. Canada Dept. Agriculture, Sci. Serv., Div. Ent., Bi-monthly Prog. Rept. 6(1):3.
-
- _____ 1950b. Forest Insect Survey Notes. Canada Dept. Agriculture, Sci. Serv., Div. Ent., Bi-monthly Prog. Rept. 6(6):3.
-
- _____ 1953a. Diseases of insects. Canada Dept. Agriculture, Sci. Serv., Div. For. Biol., Bi-monthly Prog. Rept. 9(2):4.
-
- _____ 1953b. Notes on the life history and seasonal development of the pine needle scale, Phenacaspis pinifoliae (Fitch). Canad. Ent. 85:347-352.
-
- _____ 1953c. Notes on the spruce needle miner, Taniwa albolineana Kft. Canad. Ent. 86:457-460.

- Cumming, Margaret E.P. 1954a. Forest tent caterpillar egg surveys. Canada Dept. Agriculture, Sci. Serv., For. Biol. Div., Bi-monthly Prog. Rept. 10(3):3.
- _____ 1954b. Diseases of insects. Canada Dept. Agriculture, Sci. Serv., For. Biol. Div., Bi-monthly Prog. Rept. 10(3):3.
- _____ 1955. Adelgid galls in the Prairie Provinces. Canada Dept. Agriculture, Sci. Serv., For. Biol. Div., Bi-monthly Prog. Rept. 11(6):2.
- Denyer, W.B.G. 1958. The effect of O-phenlphenol on the growth of some wood-rotting fungi. Canada Dept. Agriculture, Sci. Serv., For. Biol. Div., Bi-monthly Prog. Rept. 14(1):2.
- _____ 1960a. Culture studies of Flammula alnicola (Fr.) Kummer and Flammula conissans (Fr.) Gillett. Canad. Jr. Bot. 38:909-920.
- _____ 1960b. The biology of Flammula alnicola (Fr.) Kummer. Canada Dept. Forestry, For. Biol. Div., Int. Rept. 1960-1962. 91 p.
- _____ 1962. Decay and cull. Chapter in the growth and yield of white spruce-aspen stands in Saskatchewan. Sask. Dept. Nat. Res., For. Br., Tech. Bull. No. 4. 58 p.
- Denyer, W.B.G. and D.E. Etheridge. 1956. A punch card for decay studies. For. Chron. 32:429-432.
- Denyer, W.B.G. and C.G. Riley. 1964a. Drought effects on young spruce stands in poor sites. For. Chron. 40:206-208.
- _____ 1964b. Dieback and mortality of tamarack caused by high water. For. Chron. 40:334-338.
- Denyer, W.B.G., J.D. Gerrard and R.W. Kennedy. 1966. A statistical approach to the separation of white and black spruce on the basis of xylem anatomy. For. Sci. 12:177-184.
- Dow, A.W. 1951. Cone production in tamarack. Canada Dept. Agriculture, Sci. Serv., Div. For. Biol., Bi-monthly Prog. Rept. 7(2):2.
- Doyle, J.A. 1954. Study of logging wastes in Saskatchewan spruce operations. Canada Dept. Northern Affairs and National Resources, For. Br., For. Prod. Lab. Reprint from Can. Lumberman, August, 1954. 19 p.
- Drouin, J.A. and H.R. Wong. 1962. Eurytoma calycis Bugbee in Saskatchewan. Canada Dept. Forestry, For. Ent. & Path. Br., Bi-monthly Prog. Rept. 18(2):3.

- Drouin, J.A., B.B. McLeod and H.R. Wong. 1961. A round-headed borer in the root collars of poplars. Canada Dept. Forestry, For. Ent. & Path. Br., Bi-monthly Prog. Rept. 17(2):2-3.
- Drouin, J.A., M.T. Onysko and D.G.H. Ray. 1963a. Annual report of forest research technicians, larch sawfly population dynamics studies. Canada Dept. Forestry, For. Ent. & Path. Br., Int. Res. Rep. 21 p.
- Drouin, J.A., C.R. Sullivan, and S.G. Smith. 1963b. Occurrence of Pissodes terminalis Hopp. (Coleoptera: Curculionidae) in Canada: life history, behaviour, and cytogenetic identification. Canad. Ent. 95:70-76.
- Drouin, J.A., D.G.H. Ray and R. Smith. 1964. Annual report of forest research technicians, larch sawfly population dynamics studies. Canada Dept. Forestry, For. Ent. & Path. Br., Int. Res. Rept. 22 p.
- Drouin, J.A., R. Smith and D.G.H. Ray. 1965. Annual report of forest research technicians. Larch sawfly population dynamics studies. Canada Dept. Forestry, For. Res. Lab., Int. Rept. MS-32. 82 p.
- Drouin, J.A., R. Smith and M.J. Pocatello. 1966. Procedures manual, larch sawfly population dynamics studies. Canada Dept. Forestry and Rural Development, For. Res. Lab., Int. Rept. MS-38. 107 p.
- Elliott, K.R. 1962. Status of the forest tent caterpillar in Manitoba and Saskatchewan. Proc. Ent. Soc. of Manitoba, 17:28-31.
- _____ 1963. Shade tree and forest insects. Proc. International Great Plains Conference of Entomologists. 36:9-10.
- _____ 1965. The forest insect and disease survey in Manitoba and Saskatchewan. Proc. Ent. Soc. Man. 20:45-53.
- Elliott, K.R. and J.A. Drouin. 1961. An infestation of a tube-making Tortricid in jack pine in Saskatchewan. Canada, Dept. Forestry, For. Ent. and Path. Br., Bi-monthly Prog. Rept. 17(5):2-3.
- Elliott, K.R. and R.W. Hancox. 1962. A survey of a spruce budworm infestation along the Birch River, Saskatchewan in 1962. Canada Dept. Forestry, For. Ent. & Path. Br., Information Report, For. Ent. Lab., Winnipeg, Man. 7 p.
- Elliott, K.R. and V. Hildahl. 1961. Annual report of the Forest Insect and Disease Survey. Canada Dept. Forestry, For. Ent. and Path. Br., p. 77-89.
- _____ 1962. Annual report of the Forest Insect and Disease Survey. Canada Dept. Forestry, For. Ent. and Path. Br., p. 77-85, 89-90.

- Elliott, K.R. and V. Hildahl. 1963. Annual report of the Forest Insect and Disease Survey. Canada Dept. Forestry, For. Ent. and Path. Br., p. 75-85, 92-94.
-
1964. Annual report of the Forest Insect and Disease Survey. Canada Dept. Forestry, For. Ent. and Path. Br., p. 78-89, 93-95.
-
1966. First record of the larch casebearer in Manitoba. Canada Dept. Forestry, Bi-monthly Res. Notes. 22(4):3-4.
- Elliott, K.R. and J.G. Laut. 1965. Annual report of the Forest Insect and Disease Survey. Canada Dept. Forestry. p. 66-80.
- Elliott, K.R. and L.L. McDowall. 1963. A pine tube moth, Arayretania tabulana Freeman, in Saskatchewan. Canada Dept. Forestry, For. Ent. and Path. Br., Bi-monthly Prog. Rept. 19(3):3.
- Elliott, K.R. and H.R. Wong. 1966. An important predator of the aspen leaf beetle, Chrysomela crotchii Brown, in Manitoba and Saskatchewan. Bi-monthly Res. Notes 22(5):4.
- Elliott, K.R. and J.A. Muldrew. 1967. A knockdown metal cage for rearing larch sawfly larvae. Canad. Ent. 99:321-323.
- Elliott, K.R., J.G. Laut and N.R. Brandt. 1966. Annual report of the Forest Insect and Disease Survey. Canada Dept. Forestry and Rural Development, Forestry Branch. p. 75-94.
- Fyfe, H.A. and R.R. Lejeune. 1946. Jack-pine budworm. Canada Dept. Agriculture, Sci. Ser., Div. Ent., Bi-monthly Prog. Rept. 2(6):3.
- Gimbarsevsky, P. 1966. Land inventory interpretation. Photogr. Eng., 32:967.
- Haig, R.A. 1959a. Reforestation by planting, 1918-1930, Riding and Duck Mountains, Manitoba and Saskatchewan. Canada Dept. Northern Affairs and National Resources, For. Br., For. Res. Div., Mimeo. 59-3. 11 p.
-
- 1959b. Result of an experimental seeding in 1920 of white spruce and jack pine in western Manitoba. For. Chron. 35:7-12.
-
1962. Regeneration in Manitoba. For. Chron. 38:74-78.

- Haig, R.A. and J.H. Cayford. 1959. The Sandilands plantations, Manitoba, 1926-1948. Canada Dept. Northern Affairs and National Resources, For. Br., For. Res. Div., Mimeo 59-7. 17 p.
-
1960. Factors affecting survival and growth of red pine plantations in southeastern Manitoba. Canada Dept. Northern Affairs and National Resources, For. Br., Res. Div., Tech. Note No. 93. 17 p.
- Hammend, F.R. 1949. The fall cankerworm. Canada Dept. Agriculture, Sci. Serv., Div. Ent., Bi-monthly Prog. Rept. 5(4):3.
-
- 1950a. The Fall cankerworm, Alsophila pomataria Harris. Canada Dept. Agriculture, Sci. Serv., Div. Ent., Bi-monthly Prog. Rept. 6(1):3.
-
- 1950b. The fall cankerworm, Alsophila pomataria Harr. Canada Dept. Agriculture, Sci. Serv., Div. Ent., Bi-monthly Prog. Rept. 6(2):2.
-
1951. Pine needle scale control. Canada Dept. Agriculture, Sci. Serv., Div. For. Biol., Bi-monthly Prog. Rept. 7(2):3.
- Harrison, J.D.B. 1934. The forests of Manitoba. Canada Dept. of the Interior, Bulletin 85. p. 80.
- Hedlin, A.F. 1949. Caragana seed chalcid, Bruchophagus sp. Canada Dept. Agriculture, Sci. Serv., Div. Ent., Bi-monthly Prog. Rept. 5(5):3.
-
- 1950a. The caragana seed chalcid, Bruchophagus sp. Canada Dept. Agriculture, Sci. Serv., Div. Ent., Bi-monthly Prog. Rept. 6(2):2.
-
- 1950b. Caragana seed chalcid, Bruchophagus sp. Canada Dept. Agriculture, Sci. Serv., Div. Ent., Bi-monthly Prog. Rept. 6(5):3.
-
1954. Tree seed insect studies. Canada Dept. Agriculture, Sci. Serv., For. Biol. Div., For. Biol. Lab., Indian Head, Saskatchewan. Int. Rept. 1954, 12 p.
-
1955. A chalcid, Megastigmus specularis Walley, infesting seeds of balsam fir, Abies balsamea (L.) Mill. Canada Dept. Agriculture, Sci. Serv., For. Biol. Div., Int. Rept. 1955, For. Biol. Lab., Indian Head, Saskatchewan. 29 p.

- Hedlin, A.F. and C.Y. Hovey. 1953. Tree seed insect studies. Canada Dept. Agriculture, Sci. Serv., For. Biol. Div., Int. Rept. 1953, For. Biol. Lab., Indian Head, Saskatchewan. 28 p.
-
- _____ 1954. Cone insects. Canada Dept. Agriculture, Sci. Serv., For. Biol. Div., Bi-monthly Prog. Rept. 10(4):3.
- Herea, R.J. 1950. Starvation of larvae of the larch sawfly. Canada Dept. Agriculture, Sci. Serv., Div. Ent., Bi-monthly Prog. Rept. 6(6):2.
-
- _____ 1951a. Experimental starvation of larch sawfly larvae. Proc. Ent. Soc. Man. 7:16-17.
-
- _____ 1951b. Some relations of the nutrition of phytophagous insects to their ecology. Proc. Ent. Soc. Man. 7:59-63.
-
- _____ 1951c. Notes on the feeding of larvae of the larch sawfly, Pristiphora erichsonii (Htg.) (Hymenoptera: Tenthredinidae). In 82nd Ann. Rept., Ent. Soc. Ont. p. 67-70.
-
- _____ 1953. Substitute shoot production by tamarack. Canada Dept. Agriculture, Sci. Serv., Div. For. Biol., Bi-monthly Prog. Rept. 9(3):2.
-
- _____ 1955. Studies on the starvation of last-instar larvae of the larch sawfly, Pristiphora erichsonii (Htg.) (Hymenoptera: Tenthredinidae). Canad. Ent. 87:417-427.
-
- _____ 1956. Jack pine staminate flower production. Canada Dept. Agriculture, Sci. Serv., For. Biol. Div., Bi-monthly Prog. Rept. 12(3):2.
-
- _____ 1957. Studies on the reproduction capacity of the larch sawfly, Pristiphora erichsonii (Htg.) in 1956 and 1957. Canada Dept. Agriculture, Sci. Serv., For. Biol. Div., Int. Rept. 1958-4.
-
- _____ 1958. Insects and physiological research. Canad. Ent. 90:501-504.
-
- _____ 1960. The relative effects of cocoon submergence on the mortality of the larch sawfly, Pristiphora erichsonii (Hymenoptera: Tenthredinidae) and its parasite Bessa harveyi (Diptera: Tachinidae). Annals of the Ent. Soc. America, 53:476-481.
-
- _____ 1961a. A note on temperature and postdiapause development of the larch sawfly and its parasite Bessa harveyi (Tnsd.). Canad. Ent. 93:431-433.
-
- _____ 1961b. A method of rearing jack pine and spruce budworm larvae. Canada Dept. Forestry, For. Ent. & Path. Br., Bi-monthly Prog. Rept. 17(4):34.

- Heron, R.J. 1962. An investigation of the effects of some chemical constituents of the host plants and related compounds on the feeding responses of larvae of the spruce budworm, Choristoneura fumiferana (Clem.) and the jack pine budworm, Choristoneura pinus Free. Canada Dept. Forestry, For. Ent. & Path. Br., Int. Rept. 1962-1. 152 p.
-
1965. The role of chemotactic stimuli in the feeding behaviour of spruce budworm larvae on white spruce. Canad. J. Zoology, 43:247-269.
-
1966. The reproductive capacity of the larch sawfly, and some factors of concern in its measurement. Canad. Ent. 98:561-578.
-
1967. Heat tolerance of last-instar larvae of the larch sawfly, Pristiphora erichsonii (Hymenoptera: Tenthredinidae). Canad. Ent. 99:1150-1156.
- Heron, R.J. and R.M. Prentice. 1956. Preliminary studies on the effects of temperature treatments on the development and hatching of forest tent caterpillar eggs. Canada Dept. Agriculture, Sci. Serv., For. Biol. Div., For. Biol. Lab., Winnipeg. Int. Rept. 1955-6. 33 p.
-
1957. Jack-pine budworm in pine plantations in the Spruce Woods Forest Reserve, Manitoba, in 1956. Canada Dept. Agriculture, Sci. Serv., Div. For. Biol., Bi-monthly Prog. Rept. 13(1):2.
- Heron, R.J. and L.D. Nairn. 1965. Some observations on the production of staminate flower by jack pine. Canada Dept. Forestry, Bi-monthly Prog. Rept. 21(3):2-4.
- Hildahl, V. 1949a. Larch sawfly survey. Canada Dept. Agriculture, Sci. Serv., Div. of Ent., Bi-monthly Prog. Rept. 5(2):3.
-
- 1949b. Spruce and jack pine budworm. Canada Dept. Agriculture, Sci. Serv., Div. of Ent., Bi-monthly Prog. Rept. 5(4):2.
-
1950. Larch sawfly parasites. Canada Dept. Agriculture, Sci. Serv., Div. of Ent., Bi-monthly Prog. Rept. 6(2):2.
-
- 1951a. Larch sawfly parasite survey. Canada Dept. Agriculture, Sci. Serv., Div. of For. Biol., Bi-monthly Prog. Rept. 7(2):2.
-
- 1951b. Forest tent caterpillar, Malacosoma disstria Mbn. Canada Dept. Agriculture, Sci. Serv., Div. For. Biol., Bi-monthly Prog. Rept. 7(6):2.

- Hildahl, V. 1964. Insect problems of shelterbelt and shade trees in the Prairie Provinces in 1964. Proc. International Great Plains Conference of Entomologists. 37:20-23.
- _____ 1965. Insect problems of shelterbelt and shade trees. Proc. International Great Plains Conference of Entomologists. 38:4-7.
- _____ 1966. Insect problems of shelterbelts and shade trees - Manitoba and Saskatchewan. Proc. International Great Plains Conference of Entomologists. 39:30-33.
- Hildahl, V. and R.R. Lejeune. 1952. Larch sawfly parasites. Canada Dept. Agriculture, Sci. Serv., Div. For. Biol., Bi-monthly Prog. Rept. 8(3):2.
- Hildahl, V. and W.A. Reeks. 1960. Outbreaks of the forest tent caterpillar, Malacosoma disstria Hbn., and their effects on stands of trembling aspen in Manitoba and Saskatchewan. Canad. Ent. 92:199-209.
- Hildahl, V. and H.R. Wong. 1965. Distribution of the native elm bark beetle, Hylurgopinus rufipes (Eichoff), in Manitoba and Saskatchewan. Proc. Entomol. Soc. Manitoba. 21:36-38.
- Hord, H.H.V., H. van Groenwoud and C.G. Riley. 1957. Low temperature injury to roots of white elm. For. Chron. 33:156-163.
- Hottes, F.C. and G.A. Bradley. 1953. Two species of Cinara (Homoptera: Aphididae) from Ontario. Proc. Biol. Soc. of Washington. 66:85-88.
- Hovey, C.Y. 1951. Artificial control of the spruce mite, Paratetranychus ununguis Jac. Canada Dept. Agriculture, Sci. Serv., Div. For. Biol., Bi-monthly Prog. Rept. 7(6):3.
- _____ 1953. Tree seed insects. Canada Dept. Agriculture, Sci. Serv., Div. For. Biol., Bi-monthly Prog. Rept. 9(3):3.
- _____ 1954. Control of shelterbelt insects. Pine needle scale, Phenacaspis pinifoliae (Fitch). Canada Dept. Agriculture, Sci. Serv., For. Biol. Div., For. Biol. Lab., Indian Head. Int. Rept. 1954-55. 39 p.
- _____ 1956. Notes on natural control of the pine needle scale, Phenacaspis pinifoliae (Fitch). Canada Dept. Agriculture, Sci. Serv., For. Biol. Div., Bi-monthly Prog. Rept. 12(1):3.

- Ives, W.G.H. 1954a. Population studies of the larch sawfly, Pristiphora erichsonii Htg. Canada Dept. Agriculture, Sci. Serv., For. Biol. Div., Winnipeg. Int. Tech. Rept. 34 p.
-
- 1954b. Sequential sampling of insect populations. For. Chron. 30:287-291.
-
- 1955a. Estimation of egg populations of the larch sawfly, Pristiphora erichsonii (Htg.). Canad. Jr. Zool. 33:370-388.
-
- 1955b. Effect of moisture on the selection of cocooning sites by the larch sawfly, Pristiphora erichsonii (Hartig). Canad. Ent. 87:301-311.
-
1956. Wandering of larch sawfly larvae before spinning cocoons. Canada Dept. Agriculture, Sci. Serv., For. Biol. Div., Bi-monthly Prog. Rept. 12(3):3.
-
1957. Estimation of cocoon populations of the larch sawfly, Pristiphora erichsonii (Hartig): Development and evaluation of techniques. Canada Dept. Agriculture, Sci. Serv., For. Biol. Div., Int. Rept. 1956-3. 18 p.
-
- 1958a. Preliminary studies on the estimation of larval populations of the larch sawfly, Pristiphora erichsonii (Hartig). Canada Dept. Agriculture, Sci. Serv., For. Biol. Div., Int. Rept. 1958-3. 25 p.
-
- 1958b. Foliage and shoot production of tamarack as factors in population studies of the larch sawfly, Pristiphora erichsonii (Hartig). Proc. Tenth Int. Congr. Ent. Vol. 4:407-416.
-
1959. A technique for estimating tamarack foliage production, a basis for detailed population studies of the larch sawfly. Canada. Ent. 91:513-519.
-
- 1960a. Estimation of larval populations of the larch sawfly, Pristiphora erichsonii (Htg.). Canada Dept. Agriculture, Res. Br., For. Biol. Div., Int. Rept., For. Biol. Lab., Winnipeg. 13 p.
-
- 1960b. A preliminary study of the wandering of starved larch sawfly larvae. Canada Dept. Agriculture, Res. Br., For. Biol. Div., For. Biol. Lab., Winnipeg, Man. Int. Rept. 9 p.
-
- 1960c. Developmental rates of larch sawfly (Pristiphora erichsonii (Htg.)) larvae in an insectary and in field shelters. Canada Ent. 92:668-674.

- Ives, W.G.H. 1961. Effects of weather on survival of larch sawfly during the egg and early larval stages. Canada Dept. Forestry, For. Ent. & Path. Br., Bi-monthly Prog. Rept. 17(5):3.
-
- 1962a. Population and mortality assessment during the egg and larval stages of the larch sawfly, Pristiphora erichsonii (Htg.). Canad. Ent. 94:256-268.
-
- 1962b. Preliminary studies of some invertebrate predators of the larch sawfly, Pristiphora erichsonii (Htg.). Canada Dept. Forestry, For. Ent. & Path. Br., For. Ent. Lab., Winnipeg. Int. Rept. 1962-3 8 p.
-
1963. Effects of defoliation on survival of larvae of the larch sawfly, Pristiphora erichsonii (Htg.). 1963. Canad. Ent. 95:887-892.
-
- 1964a. Problems encountered in the development of life tables for insects. Proc. Ent. Soc. Manitoba 20:34-44.
-
- 1964b. Temperature on or near an exposed tamarack tree. Canada Dept. Forestry, For. Ent. & Path. Br., Int. Rept., For. Ent. Lab., Winnipeg. 10 p.
-
- 1967a. Determination of premature larval drop and other causes of larch sawfly mortality. Canad. Ent. 99:1121-1131.
-
- 1967b. Relations between invertebrate predators and prey associated with larch sawfly eggs and larvae on tamarack. Canad. Ent. 99:607-622.
- Ives, W.G.H. and R.M. Prentice. 1958. A sequential sampling technique for surveys of the larch sawfly. Canad. Ent. 90:331-338.
-
1959. Estimation of parasitism of larch sawfly cocoons by Bessa harveyi Tnsd. in survey collections. Canad. Ent. 91:496-500.
- Ives, W.G.H. and W.J. Turnock. 1959. Estimation of cocoon populations of the larch sawfly, Pristiphora erichsonii (Htg.). Canad. Ent. 91:650-661.
- Ives, W.G.H. and G.L. Warren. 1964. Tree planter attachments for chemical treatment of coniferous seedlings. For. Chron. 40:503-508.
-
1965. Sequential sampling for white grubs. Canad. Ent. 97:596-604.

Ives, W.G.H. and L.D. Nairn. 1966a. Effects of defoliation on young upland tamarack in Manitoba. For. Chron. 42:137-142.

_____ 1966b. Effects of water levels on the over-wintering survival and emergence of larch sawfly in a bog habitat. Canad. Ent. 98:768-777.

Jameson, J.S. 1956a. Planting of conifers in the Spruce Woods Reserve, 1904-1929. Canada Dept. Northern Affairs and National Resources, For. Br., For. Res. Div., Tech. Note No. 28. 29 p.

_____ 1956b. Strip and spaced thinning in overstocked jack pine and black spruce stands. S & M 56-6. 11 p.

_____ 1961a. Observations on factors influencing jack pine reproduction in Saskatchewan. Canada Dept. Forestry, For. Res. Div., Tech. Note No. 97.

_____ 1961b. Preliminary softwood volume tables for Manitoba and Saskatchewan. Canada Dept. Forestry, For. Res. Br., Mimeo. 61-8. 18 p.

_____ 1963. Comparison of tree growth on two sites in the Riding Mountain Forest Experimental Area. Canada Dept. Forestry, For. Res. Br. Dept. For. Publ. No. 1019. 36 p.

_____ 1964a. Preliminary yield tables for black spruce, Manitoba-Saskatchewan. Canada Dept. Forestry, For. Res. Br., Publ. No. 1064. 32 p.

_____ 1964b. Relation of jack pine height-growth to site in the Mixedwood Forest Section of Saskatchewan. Proc. Soc. Nor. Amer., For. Soils Conf., Corvallis, Oregon. p. 299-316.

Jameson, J.S. and J.H. Cayford. 1964. Report of soil survey of the south-eastern Map Sheet Area, Part V: Forestry. Manitoba Department of Agriculture and Conservation. Soils Report No. 14:94-100.

Jarvis, J.M. 1961. Cutting methods for black spruce, Duck Mountain Forest Reserve, five-year results (MS-182). Canada Dept. Forestry, For. Res. Br., Mimeo. 61-11. 35 p.

_____ 1963. Some problems that affect white spruce silviculture in west central Canada. M.Sc. Thesis. Univ. of Manitoba. 70 p.

_____ 1966. Seeding white spruce, black spruce and jack pine in burned seedbeds. Canada Dept. Forestry Publ. 1166. 8 p.

- Jarvis, J.M. and J.H. Cayford. 1961. Regeneration following various methods of cutting in black spruce stands in Manitoba. *For. Chron.* 37:339-349.
-
- _____ 1967. Effects of partial cutting, clear-cutting and seedbed treatment on growth and regeneration in black spruce stands in Manitoba. *Pulp and Paper Magazine of Canada, Woodl. Rev.*, August. 362, 363, 366, 367.
- Jarvis, J.M., G.A. Steneker, R.M. Waldron and J.C. Lees. 1966. Review of Silvicultural research, white spruce and trembling aspen cover types, Mixedwood Forest Section, Boreal Forest Region, Alberta-Saskatchewan-Manitoba. Canada Dept. Forestry and Rural Development, *For. Br. Publ. No. 1156*, 189 p.
- Johnson, H.J. 1953. Reforestation on forest reserves of Saskatchewan, 1916-1946. Canada Dept. Resources and Development, *For. Br., For. Res. Div., S & M 53-5*. 22 p.
-
- _____ 1955. The effect of various slash disposal methods on the regeneration of cut-over jack pine stands. Canada Dept. Northern Affairs and National Resources, *For. Br., For. Res. Div., Tech. Note No. 23*. 12 p.
-
- _____ 1956. Some aspects of black spruce reproduction in the central Boreal Forest Region of Manitoba. Canada Dept. Northern Affairs and National Resources, *For. Br., For. Res. Div., S & M 56-3*. 16 p.
-
- _____ 1957. Empirical yield tables for aspen in the Riding, Duck and Porcupine Mountains, Manitoba. Canada Dept. Northern Affairs and National Resources, *For. Br., For. Res. Div. S & M 57-8*. 13 p.
- Kastrukoff, M. 1952. Strip thinning with tractor winch in Saskatchewan. Canada Dept. Resources and Development, *For. Br., Div. For. Res., Dom. For. Serv., Silv. Leaflet No. 48*. 2 p.
- Kemp, J.G., W.G.H. Ives and G. Hergert. 1965. A machine to prepare coniferous foliage samples for analysis. *For. Chron.* 41:248-251.
- Laut, John G. 1966. Cultural characteristics of three species of *Boletinus*. *Canad. Jr. Bot.* 44:395-402.
-
- _____ 1967. Eastern dwarf mistletoe on jack pine in Manitoba. United States Dept. Agriculture, *Agric. Res. Serv., Crops Res. Div., Plant Dis. Rep.*, 51:899-900.
- Laut, J.G. and K.R. Elliott. 1966. Extensive hail damage in northern Manitoba. *For. Chron.* 42:198.

- Laut, J.G. and V. Hildahl. 1964. Annual report of the Forest Insect and Disease Survey. Canada Dept. Forestry, For. Ent. and Path. Br., p. 90-92.
- Laut, J.G., B.C. Sutton and J.J. Lawrence. 1966. Brown spot needle blight in Canada. Plant Dis. Reporter 50:208.
- Lawrence, J.J. and J.C.E. Melvin. 1967. The status of forest insects and diseases following strip thinning of jack pine thickets in Manitoba. Canada Dept. Forestry and Rural Development. For. Br., Int. Rept. MS-51, 5 p.
- Lejeune, R.R. 1945a. Annual report of the Forest Insect Survey. Canada Dept. Agriculture, Sci. Serv., Div. Ent., p. 43-52.
- _____ 1945b. Spruce budworm, jack-pine budworm and borers. Canada Dept. Agriculture, Sci. Serv., Div. Ent., Bi-monthly Prog. Rept. 1(3):2.
- _____ 1945c. Spruce and jack-pine budworm. Canada Dept. Agriculture, Sci. Serv., Div. Ent., Bi-monthly Prog. Rept. 1(4):2.
- _____ 1945d. Salvage of wind-thrown lumber in Riding Mountain National Park, Manitoba. Canada Dept. Agriculture, Sci. Serv., Div. Ent., Bi-monthly Prog. Rept. 1(5):3.
- _____ 1945e. The European Larch Sawfly. Canada Dept. Agriculture, Sci. Serv., Div. Ent., Bi-monthly Prog. Rept. 1(5):3.
- _____ 1945f. Jack-pine budworm. Canada Dept. Agriculture, Sci. Serv., Div. Ent., Bi-monthly Prog. Rept. 1(6):3.
- _____ 1945g. Spruce Budworm. Canada Dept. Agriculture, Sci. Serv., Div. Ent., Bi-monthly Prog. Rept. 1(6):3.
- _____ 1946a. European larch sawfly. Canada Dept. Agriculture, Sci. Serv., Div. Ent., Bi-monthly Prog. Rept. 2(2):2.
- _____ 1946b. Major research projects of the Winnipeg laboratory. Canada Dept. Agriculture, Sci. Serv., Div. Ent., Bi-monthly Prog. Rept. 2(3):2.
- _____ 1946c. Parasite liberations to control forest insects. Canada Dept. Agriculture, Sci. Serv., Div. Ent., Bi-monthly Prog. Rept. 2(4):2.
- _____ 1946d. Report on "Spruce Infestations" in northern Manitoba. Canada Dept. Agriculture, Sci. Serv., Div. Ent., Bi-monthly Prog. Rept. 2(4):3.

- Lejeune, R.R. 1946e. Larch sawfly. Canada Dept. Agriculture, Sci. Serv., Div. Ent., Bi-monthly Prog. Rept. 2(6):3.
- _____ 1947a. Spruce budworm biological control study. Canada Dept. Agriculture, Sci. Serv., Div. Ent., Bi-monthly Prog. Rept. 3(1):2.
- _____ 1947b. Program of the Winnipeg laboratory for 1947. Canada Dept. Agriculture, Sci. Serv., Div. Ent., Bi-monthly Prog. Rept. 3(3):2.
- _____ 1947c. Deterioration of fire killed jack pine. Canada Dept. Agriculture, Sci. Serv., Div. Ent., Bi-monthly Prog. Rept. 3(4):2.
- _____ 1947d. Spruce budworm in eastern Manitoba. Canada Dept. Agriculture, Sci. Serv., Div. Ent., Bi-monthly Prog. Rept. 3(4):2.
- _____ 1947e. Status of the larch sawfly, Pristiphora erichsonii (Htg.) in the Prairie Provinces. Canad. Ent. 79:130-134.
- _____ 1948a. Forest Insect Survey plans for 1948. Canada Dept. Agriculture, Sci. Serv., Div. Ent., Bi-monthly Prog. Rept. 4(2):2.
- _____ 1948b. An interesting tamarack tree ring record. Canada Dept. Agriculture, Sci. Serv., Div. Ent., Bi-monthly Prog. Rept. 4(2):2.
- _____ 1949a. Instruction Saskatchewan Forestry School. Canada Dept. Agriculture, Sci. Serv., Div. Ent., Bi-monthly Prog. Rept. 5(2):3.
- _____ 1949b. Larch sawfly parasites. Canada Dept. Agriculture, Sci. Serv., Div. Ent., Bi-monthly Prog. Rept. 5(2):3.
- _____ 1949c. Forest Insect Survey. Canada Dept. Agriculture, Sci. Serv., Div. Ent., Bi-monthly Prog. Rept. 5(3):3.
- _____ 1949d. Field accommodation. Canada Dept. Agriculture, Sci. Serv., Div. Ent., Bi-monthly Prog. Rept. 5(3):3.
- _____ 1950. The effect of jack pine staminate flowers on the size of larvae of the jack-pine budworm, Choristoneura sp. Canad. Ent. 82.
- _____ 1951a. Some ecological factors governing populations of the larch sawfly, Pristiphora erichsonii (Htg.). Canad. Ent. 83:152-156.
- _____ 1951b. The larch sawfly problem. For. Chron. 27:17-20.

- Lejeune, R.R. 1951c. Research projects for 1951, Winnipeg Laboratory. Canada Dept. Agriculture, Sci. Serv., Div. For. Biol., Bi-monthly Prog. Rept. 7(3):2.
- _____ 1953. Summer Program, Laboratory of Forest Biology, Winnipeg. Canada Dept. Agriculture, Sci. Serv., Div. For. Biol., Bi-monthly Prog. Rept. 9(3):3.
- _____ 1955a. Population ecology of the larch sawfly. Canad. Ent. 87:111-117.
- _____ 1955b. Forest insects of Saskatchewan. In Saskatchewan's Forests. Dept. Natural Resources. p. 116-123.
- Lejeune, R.R. and B. Filuk, 1947. The effect of water levels on larch sawfly populations. Canad. Ent. 79:155-160.
- _____ 1948. Current trends in larch sawfly control. Canada Dept. Agriculture, Sci. Serv., Div. Ent., Bi-monthly Prog. Rept. 4(1):3.
- Lejeune, R.R. and W.F. Black. 1947. The influence of jack pine pollen on the epidemiology of the jack-pine budworm. Canada Dept. Agriculture, Sci. Serv., Div. Ent., Bi-monthly Prog. Rept. 3(2):4.
- _____ 1950. Populations of larvae of the jack-pine budworm. For. Chron. 26:152-156.
- Lejeune, R.R. and J.B. Martin. 1948. Studies on annual rings of tamarack. Canada Dept. Agriculture, Sci. Serv., Div. Ent., Bi-monthly Prog. Rept. 4(6):2.
- Lejeune, R.R. and W.J. Turnock. 1948. Pitch nodule maker causes serious damage in pine plantations. Canada Dept. Agriculture, Sci. Serv., Div. Ent., Bi-monthly Prog. Rept. 4(3):2.
- Lejeune, R.R. and H.R. Wong. 1949. Distribution of the larch sawfly in Manitoba and Saskatchewan. Canada Dept. Agriculture, Sci. Serv., Div. Ent., Bi-monthly Prog. Rept. 5(6):2.
- Lejeune, R.R. and D. Burbidge. 1950. Effect of high water on several infestations of the larch sawfly. Canada Dept. Agriculture, Sci. Serv., Div. Ent., Bi-monthly Prog. Rept. 5(6):3.
- Lejeune, R.R. and V. Hildahl. 1954. A survey of parasites of the larch sawfly, (Pristiphora erichsonii (Hartig)) in Manitoba and Saskatchewan. Canad. Ent. 86:337-345.
- Lejeune, R.R., W.H. Fell and D.P. Burbidge. 1955. The effect of flooding on development and survival of the larch sawfly Pristiphora erichsonii (Tenthredinidae). Ecology 36:63-70.

- Linquist, O.H. 1952. A device for capturing adult insects in rearing containers and cages. *Canad. Ent.* 84:380-381.
- _____ 1954. Ichneumonid parasites of Neodiprion spp. Canada Dept. Agriculture, Sci. Serv., For. Biol. Div., Bi-monthly Prog. Rept. 10(1):3.
- Liscombe, E.A.R. and R.R. Lejeune. 1949. Natural control of the spruce budworm. Canada Dept. Agriculture, Sci. Serv., Div. Ent., Bi-monthly Prog. Rept. 5(6):2.
- MacGillivray, M.E. and G.A. Bradley. 1961. A new subgenus and species of Toxopterella Hille Ris Lambers (Homoptera: Aphididae), from Sorbus. *Canad. Ent.* 92:999-1005.
- MacNeill, B.H. and H. Zalasky. 1957. Histological study of host-parasite relationships between Septoria glycines Hemmi and soybean leaves and pods. *Canad. J. Bot.* 35:501-505.
- McDowall, L.L. and H.R. Wong. 1962. Pine tip moths in southeastern Manitoba. Canada Dept. Forestry, For. Ent. & Path. Br., Bi-monthly Prog. Rept. 18(4):2.
- McDowall, L.L., R.M. Prentice and W.A. Reeks. 1957. Surveys of infestations of the jack-pine budworm, Choristoneura pinus (Free.) in plantations of Manitoba, 1956-1957. Canada Dept. Agriculture, Sci. Serv., For. Biol. Lab., Int. Rept. 1957-1. Winnipeg, Man. 13 p.
- McGuffin, W.C. 1945a. New descriptions of larvae of forest insects: Larvae of the genus Eupithecia (Lepidoptera, Geometridae). *Canad. Ent.* 77:53-55.
- _____ 1945b. New descriptions of larvae of forest insects: Nyctobia, Eufidonia (Lepidoptera, Geometridae). *Canad. Ent.* 77:197-199.
- _____ 1946. Forest Insect Survey. Canada Dept. Agriculture, Sci. Serv., Div. Ent., Bi-monthly Prog. Rept. 2(5):2.
- _____ 1947a. New descriptions of larvae of forest insects: Semiothisa, Dysmiga (Lepidoptera, Geometridae). *Canad. Ent.* 79:113-116.
- _____ 1947b. Forest Insect Survey. Canada Dept. Agriculture, Sci. Serv., Div. Ent., Bi-monthly Prog. Rept. 3(5):2.
- McGuffin, W.C. and R.B. Barker. 1945. Forest Insect Survey. Canada Dept. Agriculture, Sci. Serv., Div. Ent., Bi-monthly Prog. Rept. 1(4):3.

- McGuffin, W.C. and R.B. Barker. 1946. Annual report of the Forest Insect Survey. Canada Dept. Agriculture, Sci. Serv., Div. Ent., p. 54-65.
- McKinnon, H.A. 1952. Notes on growth of tamarack. Canada Dept. Agriculture, Sci. Serv., Div. For. Biol., Bi-monthly Prog. Rept. 8(2):3.
- Melvin, J.C.E. 1960a. Insects attacking wild rice in Manitoba. Canada Dept. Agriculture, Res. Br., For. Biol. Div., Bi-monthly Prog. Rept. 16(4):3.
- _____ 1960b. Observations on insects attacking wild rice in the Whiteshell Forest Reserve. Canada Dept. Agriculture, Res. Br., For. Biol. Div., Int. Rept. 1959, For. Biol. Lab., Winnipeg, Man. 16 p.
- _____ 1962. Insects attacking wild rice in Manitoba. Canada Dept. Forestry, For. Ent. & Path. Br., Bi-monthly Prog. Rept. 18(3):2.
- _____ 1966. Observations on insects attacking wild rice in Manitoba. Prec. Entomol. Soc. Manitoba. 22:6-11.
- _____ 1967. The rearing program of the forest insect survey in Manitoba-Saskatchewan Region for 1964. Canada Dept. Forestry and Rural Development, For. Br., Int. Rept. MS-57. 52 p.
- Melvin, J.C.E. and R.M. Prentice. 1959. A predator of cottony maple scale. Canada Dept. Agriculture, Res. Br., For. Biol. Div., Bi-monthly Prog. Rept. 15(5):2.
- Melvin, J.C.E. and K.R. Elliott. 1962. Pathogens recovered from forest insects in the provinces of Manitoba and Saskatchewan, 1951-1960. Canada Dept. Forestry, For. Ent. & Path. Br., Int. Rept., For. Ent. Lab., Winnipeg, Man. 53 p.
- Melvin, J.C.E. and W.J. Turnock. 1965. Parasitism of lepidopterous larvae by Bessa harveyi (Tnsd.). Canada Dept. Forestry, For. Res. Lab., Winnipeg, Man. Int. Rept. MS-11.
- Melvin, J.C.E., B.B. McLeod and H.R. Wong. 1967a. Ecological observations on the more common insects associated with black knot of cherry, Dibotryon morbosum (Schw.) Theiss and Syd. (Ascomycetes: Dothideaceae) in the forested areas of Manitoba and Saskatchewan. Canada Dept. Forestry and Rural Development, For. Br., Int. Rept. MS-59. 12 p.
- Melvin, J.C.E., H.R. Wong and B.B. McLeod. 1967b. The fauna of black knot of cherry, Dibotryon morbosum (Schw.) Theiss and Syd. (Ascomycetes: Dothideaceae) in Manitoba and Saskatchewan. Canada Dept. Forestry and Rural Development, For. Br., Int. Rept. MS-58. 5 p.

- Mott, D.C., L.D. Nairn and J.A. Cook. 1957. Radial growth in forest trees and effects of insect defoliation. *For. Sci.* 3:286-304.
- Mueller-Dombois, D. 1963. Techniques for studying soil-water growth relations on an artificial slope. Canada Dept. Forestry, For. Res. Br., Soc. N. Amer. For. Soils Conf., Corvallis, Oregon. p. 153-161. For. Res. Br. Cont. No. 561.
- _____ 1964a. Effect of depth to water tables on height growth of tree seedlings in a greenhouse. *For. Sci.* 10:306-316.
- _____ 1964b. The forest habitat types in southeastern Manitoba and their application to forest management. *Canad. J. Bot.* 42: 1417-1444.
- _____ 1965. Eco-geographic criteria for mapping forest habitats in southeastern Manitoba. *For. Chron.* 41:188-206.
- Mueller-Dombois, D. and H.P. Sims. 1966. Response of three grasses to two soils and a water table depth gradient. *Ecology.* 47:644-648.
- Muldrew, J.A. 1950. Mesoleius sulicus, a parasite of larch sawfly. Canada Dept. Agriculture, Sci. Serv., Div. Ent., For. Insect Investigations. Bi-monthly Prog. Rept. 6(6):2.
- _____ 1951a. Studies on the natural immunity of the larch sawfly. *Proc. Ent. Soc. Man.* 7:15-16.
- _____ 1951b. The factors of host distribution and the time in biological control. Part II. *Proc. Ent. Soc. Man.* 7:39-43.
- _____ 1952. Larch sawfly parasite studies. Canada Dept. Agriculture, For. Biol. Lab., Winnipeg. Ann. Tech. Rept. 1952. 16 p.
- _____ 1953a. Population studies on Bessa harveyi. Canada Dept. Agriculture, Sci. Serv., Div. For. Biol., Bi-monthly Prog. Rept. 9(3):2.
- _____ 1953b. The natural immunity of the larch sawfly (Pristiphora erichsonii (Htg.)) to the introduced parasite Mesoleius tenthredinis Morley in Manitoba and Saskatchewan. *Canad. Jr. Zool.* 31:313-332.
- _____ 1955. Parasites and insect predators of the larch sawfly. *Canad. Ent.* 87:117-120.
- _____ 1956a. Some problems in the protection of tamarack against the larch sawfly, Pristiphora erichsonii (Htg.). *For. Chron.* 32:20-29.
- _____ 1956b. Biological and natural control. In Summary of a panel discussion on larch sawfly problems. *Proc. Ent. Soc. Man.* 12:11-20.

- Muldrew, J.A. 1958. Genetic aspects of insecticide resistance. Proc. Ent. Soc. Man. 14:24-25.
-
1959. Studies on the distribution and inheritance of the resistance of the larch sawfly to Mesoleius tenthredinis Morley. Canada Dept. Agriculture, Res. Br., For. Biol. Div., Int. Rept., For. Biol. Lab., Winnipeg, Man. 51 p.
-
1964. Liberation of Bavarian Mesoleius tenthredinis Morley against the larch sawfly. Canada Dept. Forestry, Bi-monthly Prog. Rept. 20(2):2.
-
1967. Biology and initial dispersal of Olesicampe (Holocremmus) sp. nr. nematorum (Hymenoptera: Ichneumonidae), a parasite of the larch sawfly recently established in Manitoba. Canad. Ent. 99:312-321.
- Muldrew, J.A. and W. Fell. 1948. Notes on the biology of the larch sawfly. Canada Dept. Forestry, Sci. Serv., Div. Ent., For. Ins. Invest., Bi-monthly Prog. Rept. 4(5):2.
- Muldrew, J.A. and W.J. Turnock. 1965. Biological control attempts against the larch sawfly, Pristiphora erichsonii (Htg.) in Manitoba, 1964. Canada Dept. Forestry, For. Ent. & Path. Br., Int. Res. Rept., For. Ent. Lab., Winnipeg, Man. 35 p.
- Nairn, L.D. 1954a. Growth patterns in tamarack. Canada Dept. Agriculture, For. Biol. Div., Winnipeg, Man. Int. Rept. 27 p.
-
- 1954b. Growth patterns in tamarack. Canada Dept. Agriculture, Sci. Serv., For. Biol. Div., Bi-monthly Prog. Rept. 10(1):3.
-
1956. Defoliation and thinning in relation to radial increment of tamarack. Canada Dept. Agriculture, Sci. Serv., For. Biol. Div., Bi-monthly Prog. Rept. 12(3):2.
-
1958. The importance of adventitious growth in tamarack. Canada Dept. Agriculture, Sci. Serv., For. Biol. Div., Bi-monthly Prog. Rept. 14(6):2.
-
1961. Relation of stand density to defoliation and growth in tamarack stands. Canada Dept. Forestry, For. Biol. Div., Bi-monthly Prog. Rept. 17(1):3.
- Nairn, L.D. and R.M. Prentice. 1960. Infestation ratings of the larch sawfly in Manitoba and Saskatchewan. For. Chron. 36:225-229.
- Nairn, L.D. and W.G.H. Ives. 1965. White grub studies - 1964. Canada Dept. Forestry, For. Ent. & Path. Br., For. Ent. Lab., Winnipeg, Man. Int. Rept. 16 p.

- Nairn, L.D. and H.R. Wong. 1965. Field key to adult June beetles (Phyllophaga spp.) attacking coniferous plantations in Manitoba. Proc. Ent. Soc. Man. 21:33-35.
- Nairn, L.D. and W.G.H. Ives. 1967. White Grub Control Studies 1965-66. Canada Dept. Forestry, For. Ent. & Path. Br., For. Ent., Winnipeg, Man. Int. Res. Rept. 21 p.
- Nairn, L.D., W.J. Turnock, W.G.H. Ives and C.H. Buckner. 1951. Investigations of the population dynamics of the larch sawfly in Manitoba. Proc. Ent. Soc. Man. 17:31-46.
- Nairn, L.D., W.A. Reeks, F.E. Webb and V. Hildahl. 1962. History of larch sawfly outbreaks and their effect on tamarack stands in Manitoba and Saskatchewan. Canad. Ent. 94:242-255.
- Peterson, L.O.T. 1943. Annual report of the Forest Insect Survey. Canada Dept. Agriculture, Sci. Serv., Div. Ent., p. 56-61.
- _____ 1944. Annual report of the Forest Insect Survey. Canada Dept. Agriculture, Sci. Serv., Div. Ent., p. 52-61.
- _____ 1945a. Annual report of the Forest Insect Survey. Canada Dept. Agriculture, Sci. Serv., Div. Ent., p. 53-60.
- _____ 1945b. The yellow-headed spruce sawfly. Canada Dept. Agriculture, Sci. Serv., Div. Ent., Bi-monthly Prog. Rept. 1(3):3.
- _____ 1945c. Western willow leaf beetle. Canada Dept. Agriculture, Sci. Serv., Div. Ent., Bi-monthly Prog. Rept. 1(4):3.
- _____ 1945d. The Engleman spruce weevil. Canada Dept. Agriculture, Sci. Serv., Div. Ent., Bi-monthly Prog. Rept. 1(6):3.
- _____ 1946a. Forest Insect Survey. Canada Dept. Agriculture, Sci. Serv., Div. Ent., Bi-monthly Prog. Rept. 2(5):3.
- _____ 1946b. Fall cankerworm egg mortality. Canada Dept. Agriculture, Sci. Serv., Div. Ent., Bi-monthly Prog. Rept. 2(5):3.
- _____ 1946c. Chionaspis pinifoliae Fitch. Canada Dept. Agriculture, Sci. Serv., Div. Ent., Bi-monthly Prog. Rept. 2(6):3.
- _____ 1946d. Forest Insect Survey. Canada Dept. Agriculture, Sci. Serv., Div. Ent., Bi-monthly Prog. Rept. 2(6):3.

- Peterson, L.O.T. 1947a. Yellow-headed spruce sawfly control. Canada Dept. Agriculture, Sci. Serv., Div. Ent., Bi-monthly Prog. Rept. 3(1):3.
- _____ 1947b. Cecropia caterpillar, (Platysamia cecropia L.). Canada Dept. Agriculture, Sci. Serv., Div. Ent., Bi-monthly Prog. Rept. 3(3):2.
- _____ 1947c. Balsam-fir sawfly, Neodiprion abietis Harr. Canada Dept. Agriculture, Sci. Serv., Div. Ent., Bi-monthly Prog. Rept. 3(4):3.
- _____ 1948a. Tree seed insects. Canada Dept. Agriculture, Sci. Serv., Div. Ent., Bi-monthly Prog. Rept. 4(2):2.
- _____ 1948b. The cecropia mot (Platysamia cecropia L.) in Saskatchewan. Canada Dept. Agriculture, Sci. Serv., Div. Ent., Bi-monthly Prog. Rept. 4(4):3.
- _____ 1948c. The ash borer, (Podosesia fraxini Lug.). Canada Dept. Agriculture, Sci. Serv., Div. Ent., Bi-monthly Prog. Rept. 4(6):2.
- _____ 1949a. Forest Insect Survey. Canada Dept. Agriculture, Sci. Serv., Div. Ent., Bi-monthly Prog. Rept. 5(1):3.
- _____ 1955. Retarding larch sawfly damage in larch plantations. Canada Dept. Agriculture, Sci. Serv., For. Biol. Div., Bi-monthly Prog. Rept. 11(6):2.
- _____ 1957. The brown elm scale, Lecanium corni Buché. Canada Dept. Agriculture, Sci. Serv., For. Biol. Div., Bi-monthly Prog. Rept. 13(6):2.
- _____ 1958. The boxelder twig borer, Proteoteras willingana (Kearfott), (Lepidoptera, Olethreutidae). Canad. Ent. 90:639-646.
- _____ 1960. Lecanium coryli L. (Homoptera, Coccoidea) in Saskatchewan. Canad. Ent. 92:851-856.
- Peterson, L.O.T. and E.M. Sandercock. 1946. Annual report of the Forest Insect Survey. Canada Dept. Agriculture, Sci. Serv., Div. Ent., p. 66-76.
- Phelps, V.H. 1948a. White spruce stands cut to different diameter limits in northern Saskatchewan. Canada Dept. Mines and Resources, Mines, For. and Sci. Serv. Br., Dom. For. Serv., Silv. Res. Note No. 85. 21 p.

- Phelps, V.H. 1948b. White spruce reproduction in Manitoba and Saskatchewan. Canada Dept. Mines and Resources, Mines, For. and Sci. Serv. Br., Dom. For. Serv., Silv. Res. Note No. 86. 32 p.
- _____ 1948c. Scarification to induce white spruce regeneration. Canada Dept. Mines and Resources, Mines, For. and Sci. Serv. Br., Dom. For. Serv., Silv. Leaflet No. 29. 2 p.
- _____ 1948d. Silviculture and cutting practices in the prairies. For. Chron. 24:252-256.
- _____ 1950. Silvicultural results of forest policies and practices in Manitoba and Saskatchewan. For. Chron. 26:324-327.
- _____ 1951. Survival of white spruce seedlings. Canada Dept. Resources and Development. For. Br., Div. For. Res., Silv. Leaflet No. 56. 2 p.
- Pike, R.T. 1953. Thinning aspen. Duck Mountain Forest Reserve, Manitoba. Canada Dept. Resources and Development, For. Br., Div. For. Res., Silv. Leaflet No. 89. 3 p.
- _____ 1955. Yield of white spruce and balsam fir in an undisturbed stand, Duck Mountain, Manitoba. Canada Dept. Northern Affairs and National Resources, For. Br., For. Res. Div., Tech. Note No. 11. 3 p.
- Pratt, R.H.M. 1966. Aerial spraying with 2,4-D to eliminate trembling aspen. Pulp and Paper Magazine of Canada. Woodl. Rev., October. 460-462.
- Prentice, R.M. 1951a. Population studies on the balsam-fir sawfly. Canada Dept. Agriculture, Sci. Serv., Div. For. Biol., Bi-monthly Prog. Rept. 7(1):3.
- _____ 1951b. Further notes on the large aspen tortrix. Canada Dept. Agriculture, Sci. Serv., Div. For. Biol., Bi-monthly Prog. Rept. 7(5):2.
- _____ 1952. The forest tent caterpillar outbreak in Manitoba and Saskatchewan. Canada Dept. Agriculture, Sci. Serv., Div. For. Biol., Bi-monthly Prog. Rept. 8(5):2.
- _____ 1953. Egg parasitism of forest tent caterpillar. Canada Dept. Agriculture, Sci. Serv., Div. For. Biol., Bi-monthly Prog. Rept. 9(4):2.
- _____ 1954. Decline of populations of the forest tent caterpillar in central Saskatchewan. Canada Dept. Agriculture, Sci. Serv., For. Biol. Div., Bi-monthly Prog. Rept. 10(5):2.

- Prentice, R.M. 1955a. Pine root-collar weevil in Manitoba. Canada Dept. Agriculture, Sci. Serv., For. Biol. Div., Bi-monthly Prog. Rept. 11(4):1.
-
- 1955b. The spruce budworm situation in Manitoba and Saskatchewan. Canada Dept. Agriculture, Sci. Serv., For. Biol. Div., Bi-monthly Prog. Rept. 11(5):2.
-
- 1955c. The life history and some aspects of the ecology of the large aspen tortrix, Choristoneura conflictana (Wlkr.) (N. Comb.) (Lepidoptera: Tortricidae). Canad. Ent. 87:461-473.
- Prentice, R.M. and G.T. Llor. 1951. Spring activity of the large aspen tortrix. Canada Dept. Agriculture, Sci. Serv., Div. For. Biol., Bi-monthly Prog. Rept. 7(3):2.
- Prentice, R.M. and V. Hildahl. 1953. Annual report of the Forest Insect and Disease Survey. Canada Dept. Agriculture, Sci. Serv., For. Biol. Div., p. 91-103.
-
1954. Annual report of the Forest Insect and Disease Survey. Canada Dept. Agriculture, Sci. Serv., For. Biol. Div., p. 82-95.
-
- 1955a. Annual report of the Forest Insect and Disease Survey. Canada Dept. Agriculture, Sci. Serv., For. Biol. Div., p. 70-81.
-
- 1955b. Spruce budworm in southeastern Manitoba. Canada Dept. Agriculture, Sci. Serv., For. Biol. Div., Bi-monthly Prog. Rept. 11(2):2.
-
1956. Annual report of the Forest Insect and Disease Survey. Canada Dept. Agriculture, Sci. Serv., For. Biol. Div., p. 60-70.
-
1957. Annual report of the Forest Insect and Disease Survey. Canada Dept. Agriculture, Sci. Serv., For. Biol. Div., p. 53-64.
-
1958. Annual report of the Forest Insect and Disease Survey. Canada Dept. Agriculture, Sci. Serv., For. Biol. Div., p. 62-71.
-
1959. Annual report of the Forest Insect and Disease Survey. Canada Dept. Agriculture, Sci. Serv., For. Biol. Div., p. 68-78.
-
1960. Annual report of the Forest Insect and Disease Survey. Canada Dept. Forestry, For. Ent. and Path. Br., p. 68-77.

- Prentice, R.M. and W.A. Reeks. 1959. A localized outbreak of the cottony maple scale, Pulvinaria innumerabilis (Rath v.) in Manitoba. Canada Dept. Agriculture, Sci. Serv., For. Biol. Div., Bi-monthly Prog. Rept. 15(3):2.
- Prentice, R.M. and A.E. Campbell. 1959. Volume loss of pulpwood in Manitoba caused by wood borers. For. Chron. 35:142-145.
- Prentice, R.M., H.R. Wong, W.A. Reeks, and J.C. Melvin. 1956. Investigations conducted by the Forest Insect Survey in Manitoba and Saskatchewan, 1955. Canada Dept. Agriculture, Sci. Serv., For. Biol. Div., Int. Rept. 1955-3. 45 p.
- Prentice, R.M. and L.D. Nairn. 1958. Increment reduction of Scots pine following two years of defoliation by the jack-pine budworm. Canada Dept. Agriculture, Sci. Serv., For. Biol. Div., Bi-monthly Prog. Rept. 14(2):3.
- Rabkin, F.B. and R.R. Lejeune. 1954. Some aspects of the biology and dispersal of the pine tortoise scale, Toumeyella minisaticum (Pettit and McDaniel) (Homoptera: Coccidae). Canad. Ent. 86:570-575.
- Reeks, W.A. 1956. The occurrence of Retinodisplosis sp. on jack pine in Manitoba and Saskatchewan. Canada Dept. Agriculture, Sci. Serv., For. Biol. Div., Bi-monthly Prog. Rept. 12(6):2.
- _____ 1958a. The jack-pine budworm on planted pines in the Spruce Woods Forest Reserve of Manitoba, 1957. Canada Dept. Agriculture, Sci. Serv., For. Biol. Div., Bi-monthly Prog. Rept. 14(2):2.
- _____ 1958b. Weather injury to trees in Manitoba. Canada Dept. Agriculture, Sci. Serv., For. Biol. Div., Bi-monthly Prog. Rept. 14(5):1.
- _____ 1960. Observations on the life history, distribution and abundance of two species of Cecidomyia (Diptera, Cecidomyiidae) on jack pine in Manitoba and Saskatchewan. Canad. Ent. 92:154-160.
- Richmond, H.A. 1945a. Jack-pine budworm. Canada Dept. Agriculture, Sci. Serv., Div. Ent., Bi-monthly Prog. Rept. 1(2):2.
- _____ 1945b. Fire-killed timber. Canada Dept. Agriculture, Sci. Serv., Div. Ent., Bi-monthly Prog. Rept. 1(2):2.
- Richmond, H.A. and D.N. Smith. 1943. Annual report of the Forest Insect Survey. Canada Dept. Agriculture, Sci. Serv., Div. Ent., p. 46-55.

- Richmond, H.A. and W.C. McGuffin. 1944. Annual report of the Forest Insect Survey. Canada Dept. Agriculture, Sci. Serv., Div. Ent., p. 40-51.
- Richmond, H.A. and R.R. Lejeune. 1945. The deterioration of fire-killed white spruce by wood boring insects in northern Saskatchewan. For. Chron. 21:168-192.
- Riley, C.G. 1951. Research projects, Saskatoon Laboratory. Canada Dept. Agriculture, Sci. Serv., Div. For. Biol. Bi-monthly Prog. Rept. 7(5):2.
- _____ 1952a. Tree diseases in the city of Regina. Canada Dept. Agriculture, Sci. Serv., Div. For. Biol., Bi-monthly Prog. Rept. 8(5):2.
- _____ 1952b. Studies in forest pathology. IX. Fomes igniarius decay of poplar. Canad. J. Bot. 30:710-734.
- _____ 1953a. Stereum pini incorrectly reported as cause of decay in lodgepole pine. For. Chron. 29:343.
- _____ 1953b. Hail damage in forest stands. For. Chron. 29:139-143.
- _____ 1953c. Central International Forest Insect and Disease Conference. Canada Dept. Agriculture, Sci. Serv., Div. For. Biol., Bi-monthly Prog. Rept. 9(1):2.
- _____ 1955. Diseases of Saskatchewan forests. In Saskatchewan's Forests. Dept. Natural Resources. p. 99-115.
- Riley, C.G. and H. Zalasky. 1961. Annual report of the Forest Insect and Disease Survey. Canada Dept. Forestry, For. Ent. and Path. Br., p. 90-91.
- Riley, C.G. and V. Hildahl. 1962. Annual report of the Forest Insect and Disease Survey. Canada Dept. Forestry, For. Ent. and Path. Br., p. 86-88.
- _____ 1963. Annual report of the Forest Insect and Disease Survey. Canada Dept. Forestry, For. Ent. and Path. Br., p. 85-91.
- Riley, C.G., W.B.G. Denyer and R.D. Whitney. 1951. Annual report of the Forest Insect and Disease Survey. Canada Dept. Agriculture, Sci. Serv., Div. For. Biol. p. 140-146.
- Ritchie, J.C. 1961. Soil and minor vegetation of pine forests in southeast Manitoba. Canada Dept. Forestry, For. Res. Div., Tech. Note No. 96. 21 p.

- Robinson, A.G. and G.A. Bradley. 1962. The caragana aphid, Acyrtosiphon caragana (Cholod.) in Western Canada and its separation from the pea aphid. *Canad. Ent.* 94:1075-1077.
- Roller, K.J. 1966. Resin canal position in the needles of balsam, alpine and Frazer firs. *For. Sci.* 12:348-355.
- _____ 1967. Preliminary report on the possible occurrence of hybrid firs in north central Alberta. Canada Dept. Forestry and Rural Development, Bi-monthly Res. Notes. 23:10.
- Rowe, J.S. 1950. Characterization and comparison of forest stands by means of phytographs. Canada Dept. Mines Resources, Mines, For. and Sci. Serv. Br., Dom. For. Service, Res. Note No. 93. 8 p.
- _____ 1953a. Forestry sites, a discussion. *For. Chron.* 29:278-289.
- _____ 1953b. Delayed germination of white spruce on burned ground. ~~Canada Dept. Resources and Development~~, For. Br., Div. For. Res., *Silv. Leaflet No. 84*. 3 p.
- _____ 1953c. Viable seed on white spruce trees in midsummer. Canada Dept. Resources and Development, For. Br., Div. For. Res., *Silv. Leaflet No. 99*. 2 p.
- _____ 1955. Factors influencing white spruce reproduction in Manitoba and Saskatchewan. Canada Dept. Northern Affairs and National Resources, For. Br., For. Res. Div., Tech. Note No. 3. 27 p.
- _____ 1956a. In notes on browsing damage. Canada Dept. Northern Affairs and National Resources, For. Br., For. Res. Div., S & M 56-7. 10 p.
- _____ 1956b. Photographing soil pits. Dept. Northern Affairs and National Resources. For. Br., For. Res. Div., S & M 56-4. 3 p.
- _____ 1956c. Uses of undergrowth plant species in forestry. *Ecol.* 37:461-473.
- Saksena, M.K. 1961a. Nuclear phenomena in the basidium of ceratobasidium praticolum (Ketila) elive. *Canad. J. Bot.* 39:717-725.
- _____ 1961b. Nuclear structure and division in the mycelium and basidiospores of ceratobasidium praticolum. *Canad. J. Bot.* 39:749-756 + plates.
- Sandercock, E. 1948. Forest Insect Survey. Canada Dept. Agriculture, Sci. Serv., Div. Ent., Bi-monthly Prog. Rept. 4(1):3.
- Sandercock, E.M. and L.O.T. Peterson. 1947. Annual report of the Forest Insect Survey. Canada Dept. Agriculture, Sci. Serv., Div. Ent., p. 80-90.

- Sandercock, E.M. and M.E.P. Cumming. 1948. Annual report of the Forest Insect Survey. Canada Dept. Agriculture, Sci. Serv., Div. Ent., p. 90-101.
- Sims, H.P. 1964. Root development of jack pine seedlings on burned over dry sites in southeastern Manitoba. Canada Dept. Forestry, For. Res. Br., Dept. For. Publ. No. 1061. 15 p.
- _____ 1967. Effect of pre-planting root exposure on survival of jack pine seedlings in Manitoba. Canada Dept. Forestry and Rural Development, Bi-monthly Res. Notes 23:15.
- Smereka, E. and R.R. Lejeune. 1953. Leafhoppers attacking poplar. Canada Dept. Agriculture, Sci. Serv., For. Biol. Div., Bi-monthly Prog. Rept. 9(6):2.
- Steneker, G.A. 1963. Results of a 1936 release cutting to favor white spruce in a 50-year-old white spruce-aspen stand in Manitoba. Canada Dept. Forestry, For. Res. Br., Dept. For. Publ. No. 1005. 16 p.
- _____ 1964. Ten-year results of thinning 14-, 19- and 23-year-old aspen to different spacings. Canada Dept. Forestry, For. Res. Br., Dept. For. Publ. No. 1038. 22 p.
- _____ 1967. Growth of white spruce following release from trembling aspen. Canada Dept. Forestry and Rural Development, For. Br., Dept. Publ. No. 1183. 16 p.
- Steneker, G.A. and J.M. Jarvis. 1963. A preliminary study to assess competition in a white spruce-trembling aspen stand. For. Chron. 39:334-336.
- _____ 1966. Thinning in trembling aspen stands, Manitoba and Saskatchewan. Canada Dept. Forestry, Publ. No. 1140. 28 p.
- Sutton, B.C. 1965. Typification of Dendrophoma, and reassessment of D. obscurans. Trans. Brit. Mycol. Soc. 48:611-616.
- _____ 1966. Development of fructifications in Colletotrichum graminicola (Ces.) Wils. and related species. Canad. J. Bot. 44:887-897.
- _____ 1967a. A new species of Bactrodesmium from white spruce. Canad. J. Bot. 45:1777-1781.
- _____ 1967b. Two new genera of the Sphaeropsidales and their relationships with Diachorella, Strasseria and Plagiorhabdus. Canad. J. Bot. 45:1249-1263.
- _____ 1967c. Libertina, a synonym of Phomopsis. Trans. Br. Mycol. Soc. 50:355-358.

- Sutton, B.C. 1967d. Redescription of *Ajrekarella* Kamat and Kalani. *Mycopathol. Mycol. Appl.* 33:76-80.
- Sutton, B.C. and S.D. Patil. 1966. *Mahabalella* nov. gen., a new hyphomycete genus. *Nova Hedwigia.* 11:203-207.
- Sutton, B.C. and K.A. Pirozynski. 1965. Notes on microfungi II. *Trans. Brit. Mycol. Soc.* 48:349-366.
-
- _____ 1966. *Phragmotrichum karstenii*. *Trans. Brit. Mycol. Soc.* 49:522.
- Sutton, B.C. and P.W. Sellar. 1966. *Toxosperiopsis* n. gen., an unusual member of the Melanconiales. *Canad. J. Bot.* 44:1505-1513.
- Sutton, B.C. and J.M. Waterston. 1966. C.M.I. Descriptions of pathogenic fungi and bacteria. Set 9, C.M.I.: 81-90.
- Sutton, B.C. and D.P. Brambilla. 1967. List of species deposited in the mycological herbarium of the Forest Research Laboratory, Winnipeg, Manitoba. Canada Dept. Forestry and Rural Development Internal Report MS-63. 81 p.
- Thomas, R.W. 1952. Annual report of the Forest Insect and Disease Survey. Canada Dept. Agriculture, Sci. Serv., For. Biol. Div., p. 92-99.
-
- _____ 1953. Annual report of the Forest Insect and Disease Survey. Canada Dept. Agriculture, Sci. Serv., For. Biol. Div., p. 102-111.
-
- _____ 1954. Dwarf mistletoe on spruce. Canada Dept. Agriculture, Sci. Serv., For. Biol. Div., Bi-monthly Prog. Rept. 10(1):3.
- Timenin, M.I. 1962. Antifungal activity of Pentatomid scent glands. *Canad. Jr. Microbiology* 8:594-595.
-
- _____ 1963. Chlorosis of white spruce seedlings in a Saskatchewan Nursery. Canada Dept. Forestry, For. Ent. & Path. Br., Bi-monthly Prog. Rept. 19(1):2.
-
- _____ 1964. Interaction of seed-coat microflora and soil microorganisms and its effects on pre- and post-emergence of some conifer seedlings. *Canad. J. Microbiology* 10:17-22.
- Tucker, R.E. and J.M. Jarvis. 1967. Prescribed burning in a white spruce-trembling aspen stand in Manitoba. *Pulp and Paper Magazine of Canada, Woodl. Rev.*, July 333-335.
- Turnock, W.J. 1949. The birch sawfly. Canada Dept. Agriculture, Sci. Serv., Div. Ent., Bi-monthly Prog. Rept. 5(5):2.

- Turnock, W.J. 1951. Some aspects of the biology of the pitch nodule maker, Petrova albicapitana (Busck.). M.Sc. Thesis, Univ. of Minnesota. 74 p.
- _____ 1952. Larch sawfly ecological studies. Canada Dept. Agriculture, For. Biol. Lab., Winnipeg. Tech. Rept. 1952. 15 p.
- _____ 1953a. Some new predators of the larch sawfly. Canada Dept. Agriculture, Sci. Serv., Div. For. Biol., Bi-monthly Prog. Rept. 9(3):2.
- _____ 1953b. Some aspects of the life history and ecology of the pitch nodule maker, Petrova albicapitana (Busck.) (Lepidoptera: Olethreutidae). Canad. Ent. 85:233-243.
- _____ 1954a. Larch sawfly ecological studies. 1953. Canada Dept. Agriculture, Sci. Serv., For. Biol. Div., For. Biol. Lab., Winnipeg. 37 p.
- _____ 1954b. Tamarack killed by the larch sawfly. Canada Dept. Agriculture, Sci. Serv., For. Biol. Div., Bi-monthly Prog. Rept. 10(6):2.
- _____ 1955a. Additional mortality in tamarack plots. Canada Dept. Agriculture, Sci. Serv., For. Biol. Div., Bi-monthly Prog. Rept. 11(4):2.
- _____ 1955b. Larch sawfly ecological studies. Canada Dept. Agriculture, Sci. Serv., For. Biol. Div., Int. Rept. 1954-1. For. Biol. Lab., Winnipeg, Man.
- _____ 1955c. A comparison of air temperature extremes in two tamarack sites. Ecol. 36:509-511.
- _____ 1956a. Injury to tamarack shoots caused by the larch sawfly. Canada Dept. Agriculture, Sci. Serv., For. Biol. Div., Bi-monthly Prog. Rept. 12(1):3.
- _____ 1956b. Preliminary life tables for the larch sawfly. Canada Dept. Agriculture, Sci. Serv., For. Biol. Div., Int. Rept. 1955-7. For. Biol. Lab., Winnipeg, Man.
- _____ 1957. A trap for insects emerging from the soil. Canad. Ent. 89:455-456.
- _____ 1959. Emergence of the larch sawfly, Pristiphora erichsonii (Htg.) in relation to soil temperatures and weather patterns. Canada Dept. Agriculture, Sci. Serv., For. Biol. Div., Int. Rept. 1958-5. For. Biol. Lab., Winnipeg, Man.

- Turneck, W.J. 1960a. Estimation of adult populations of the larch sawfly, Pristiphora erichsonii (Htg.). *Canad. Ent.* 92:659-662.
-
- 1960b. Ecological life-history of the larch sawfly, Pristiphora erichsonii (Htg.) (Hymenoptera: Tenthredinidae), in Manitoba and Saskatchewan. *Canad. Ent.* 92:500-516.
-
1961. Variability of parasitism and other pupal mortality of the forest tent caterpillar in relation to the cocooning site. *Canada Dept. Forestry, For. Ent. & Path. Br., Bi-monthly Prog. Rept.* 17(2):2.
-
- 1963a. Cocooning behavior and survival of larch sawfly larvae in a wet environment. *Canada Dept. Forestry, For. Ent. & Path. Br., Int. Res. Rept., For. Ent. Lab., Winnipeg, Man.* 12 p.
-
- 1963b. Soil temperatures in an upland and two bog habitats. *Canada Dept. Forestry, For. Ent. & Path. Br., Int. Res. Rept., For. Ent. Lab., Winnipeg, Man.* 29 p.
-
- 1963c. Effects of partial starvation of larch sawfly larvae. *Canada Dept. Forestry, For. Ent. & Path. Br., Int. Res. Rept., For. Ent. Lab., Winnipeg, Man.* 11 p.
-
1964. Prolonged diapause in the larch sawfly. *Canada Dept. Forestry, For. Ent. & Path. Br., Int. Res. Rept., For. Ent. Lab., Winnipeg, Man.* 16 p.
- Turneck, W.J. and R.M. Prentice. 1950. Forest Insect Survey. *Canada Dept. Agriculture, Sci. Serv., Div. Ent., Bi-monthly Prog. Rept.* 6(5):3.
- Turneck, W.J. and W.G.H. Ives. 1957. An instrument for measuring the radii of tree crowns. *For. Chron.* 33(4):355-357.
-
1962. Evaluation of mortality during the cocoon stage of the larch sawfly, Pristiphora erichsonii (Htg.). *Canad. Ent.* 94:897-902.
- Turneck, W.J. and J.C.E. Melvin. 1963. The status of Bessa harveyi (Tnsd.) (Diptera: Tachinidae). *Canad. Ent.* 95:646-654.
- Turneck, W.J. and J.A. Maldrew. 1964a. Liberations of additional species of parasites against the larch sawfly. *Canada Dept. Forestry, For. Ent. & Path. Br., Bi-monthly Prog. Rept.* 20(2):3.
-
- 1964b. Biological control attempts against the larch sawfly, Pristiphora erichsonii (Htg.) in Manitoba, 1961-63. *Canada Dept. Forestry, For. Ent. & Path. Br., Infer. Rept., For. Ent. Lab., Winnipeg, Man.* 40 p.

- Turnock, W.J. and J.A. Garland. 1965. Coleopterous predators of larch sawfly cocoons. Canada Dept. Forestry, For. Ent. & Path. Br., For. Res. Lab., Winnipeg, Man., Int. Rept. MS-9. 24 p.
- Vaartaja, O. 1953a. Disease caused by weak parasites associated with shade in seedbeds. Canada Dept. Agriculture, Sci. Serv., Div. For. Biol., Bi-monthly Prog. Rept. 9(2):3.
- _____ 1953b. Seedling diseases of conifers in Saskatchewan. Canada Dept. Agriculture, Sci. Serv., For. Biol. Div., Bi-monthly Prog. Rept. 9(5):2.
- _____ 1954a. Review of chemical control of damping-off in forest nurseries. Canada Dept. Agriculture, Div. For. Biol., Sci. Serv., For. Path. Lab., Saskatoon, Sask. 34 p.
- _____ 1954b. Mineral deficiencies at Big River nursery. Canada Dept. Agriculture, For. Biol. Div., Sci. Serv., For. Path. Lab., Saskatoon, Sask. 14 p.
- _____ 1954c. Photoperiodic ecotypes of trees. Canad. J. Bot. 32:392-399.
- _____ 1954d. Temperature and evaporation at the near ground level on certain forest sites. Canad. J. Bot. 32:760-783.
- _____ 1954e. "Red-Patch" disease and its control. Canada Dept. Agriculture, Sci. Serv., For. Biol. Div., Bi-monthly Prog. Rept. 10(3):3.
- _____ 1954f. Microflora on the surface of seedlings as affected by Thiram. Canada Dept. Agriculture, Sci. Serv., For. Biol. Div., Bi-monthly Prog. Rept. 10(4):3.
- _____ 1954g. Correction of chlorosis in spruce seedbeds. Canada Dept. Agriculture, Sci. Serv., For. Biol. Div., Bi-monthly Prog. Rept. 10(5):2.
- _____ 1955a. Storage moulding of maple seedlings. Canada Dept. Agriculture, Sci. Serv., For. Biol. Div., Bi-monthly Prog. Rept. 11(1):3.
- _____ 1955b. Phytophthora cactorum in Saskatchewan. Canada Dept. Agriculture, Sci. Serv., For. Biol. Div., Bi-monthly Prog. Rept. 11(2):2.
- _____ 1955c. Effect of cellulose pelleting on the germination of seed. Canada Dept. Agriculture, Sci. Serv., For. Biol. Div., Bi-monthly Prog. Rept. 11(2):2.

- Vaartaja, O. 1955d. Damping-off pathogens on Caragana. Canada Dept. Agriculture, Sci. Serv., For. Biol. Div., Bi-monthly Prog. Rept. 11(3):2.
- _____ 1955e. Effects of soil amendment, fertilizer, and fungicide on growth of seedlings. Canada Dept. Agriculture, Sci. Serv., For. Biol. Div., Bi-monthly Prog. Rept. 11(3):2.
- _____ 1955f. Chemotherapeutic action of Dibenzothiophene against Rhizoctonia solani. Canada Dept. Agriculture, Sci. Serv., For. Biol. Div., Bi-monthly Prog. Rept. 11(4):2.
- _____ 1955g. Notes on damping-off in the prairie nurseries. Canada Dept. Agriculture, Sci. Serv., For. Biol. Div., Bi-monthly Prog. Rept. 11(6):2.
- _____ 1956a. Screening fungicides for controlling damping-off of tree seedlings. *Phytopathology* 46:387-390.
- _____ 1956b. Principles and present status of chemical control of seedling diseases. *For. Chron.* 32:45-48.
- _____ 1956c. Photoperiodic response in germination of seed of certain trees. *Canad. J. Bot.* 34:377-388.
- _____ 1956d. Notes on low temperature fungi. Canada Dept. Agriculture, Sci. Serv., For. Biol. Div., Bi-monthly Prog. Rept. 12(4):3.
- _____ 1957a. Photoperiodic responses in seedlings of northern tree species. *Canad. J. Bot.* 35:133.
- _____ 1957b. Notes on damping-off in the prairie nurseries in 1956. Canada Dept. Agriculture, Sci. Serv., For. Biol. Div., Bi-monthly Prog. Rept. 13(1):3.
- _____ 1957c. Damping-off control by antibiotic plant substances. Canada Dept. Agriculture, Sci. Serv., For. Biol. Div., Bi-monthly Prog. Rept. 13(2):2.
- _____ 1957d. The susceptibility of seedlings of various tree species to Phytophthora cactorum. Canada Dept. Agriculture, Sci. Serv., For. Biol. Div., Bi-monthly Prog. Rept. 13(2):2.
- _____ 1957e. Effects of Trichoderma on tree seedlings and on their pathogens. Canada Dept. Agriculture, Sci. Serv., For. Biol. Div., Bi-monthly Prog. Rept. 13(5):1.
- _____ 1957f. Partial breakage of dormancy in birch seeds by gibberellin. Canada Dept. Agriculture, Sci. Serv., For. Biol. Div., Bi-monthly Prog. Rept. 13(6):2.

- Vaartaja, O. 1958a. Treating seedbeds with the new sterilizer Mylone. Canada Dept. Agriculture, Sci. Serv., For. Biol. Div., Bi-monthly Prog. Rept. 14(2):3.
- _____ 1958b. Winter damage in a Saskatchewan nursery. Canada Dept. Agriculture, Sci. Serv., For. Biol. Div., Bi-monthly Prog. Rept. 14(5):2.
- _____ 1958c. A screening test for soil sterilizers. Canada Dept. Agriculture, Sci. Serv., For. Biol. Div., Bi-monthly Prog. Rept. 14(6):2.
- _____ 1959a. Evidence of photoperiodic ecotypes in trees. Ecol. Monogr. 29:91-111.
- _____ 1959b. A screening test for fungicides not toxic to pines. Canada Dept. Agriculture, Res. Br., For. Biol. Div., Bi-monthly Prog. Rept. 15(2):2.
- _____ 1959c. Photoperiodic response in germination of four species of Betula. Canada Dept. Agriculture, Res. Br., For. Biol. Div., Bi-monthly Prog. Rept. 15(3):2.
- _____ 1960a. Chemical control of damping-off in forest nurseries. Canada Dept. Agriculture, Res. Br., For. Biol. Div., Int. Rept., For. Biol. Lab., Saskatoon, Sask. 81 p.
- _____ 1960b. Notes on growing Abies in greenhouse. Paper prepared in response to a request by Dr. R.E. Balch, For. Biol. Lab., Fredericton, N.B.
- _____ 1960c. Ecotypic variation of photoperiodic response in trees especially in two Populus species. For. Sci. 6:200-206.
- _____ 1960d. Selectivity of fungicidal materials in agar cultures. Phytopathology 50:870-873.
- _____ 1960e. Effect of photoperiod on drought resistance of white spruce seedlings. Canad. J. Bot. 38:597-599.
- _____ 1960f. Photoperiodic response in seedlings of five species of Betula and Pinus. Canad. Jr. Bot. 38:807-813.
- _____ 1960g. Photoperiodism in northern and southern sugar maple. Canada Dept. Agriculture, Res. Br., For. Biol., Div., Bi-monthly Prog. Rept. 16(2):2.
- _____ 1961a. Photoperiodic ecotypes in trees. Recent advances in Botany. Univ. Toronto Press. p. 1331-1334.

- Vaartaja, O. 1961b. Demonstration of photoperiodic ecotypes in Liriodendron and Quercus. Canad. Jr. Bot. 39:649-654.
- _____ 1961c. Ecotypic variation of photoperiodic response in tree seedlings during their second season. Canada Dept. Forestry, For. Ent. & Path. Br., Bi-monthly Prog. Rept. 17(2):2.
- _____ 1962a. Ecotypic variation of photoperiodism of trees with special reference to Pinus resinosa and Thuja occidentalis. Canad. Jr. Bot. 40:849-856.
- _____ 1962b. Photoperiodism in Eucalyptus camaldulensis and E. globulus. Canada Dept. Forestry, For. Ent. & Path. Br., Bi-monthly Prog. Rept. 18(4):2.
- _____ 1963. Germination of white spruce seed not affected by extreme ph. Canada Dept. Forestry, For. Ent. & Path. Br., Bi-monthly Prog. Rept. 19(3):2.
- _____ 1964. Chemical treatment of seedbeds to control nursery diseases. Bot. Rev. 1964. p. 1-91.
- Vaartaja, O. and R.D. Whitney. 1956. Spread of "Red Patch" diseases. Canada Dept. Agriculture, Sci. Serv., For. Biol. Div., Bi-monthly Prog. Rept. 12(3):3.
- Vaartaja, O. and W.H. Cram. 1956. Damping-off pathogens of conifers and of caragana in Saskatchewan. Phytopathology 46:391-397.
- Vaartaja, O. and P.J. Salisbury. 1961. Potential pathogenicity of pythium isolates from forest nurseries. Phytopathology 51:505-507.
- Vaartaja, O. and H.K. Saksena. 1961. Photoperiodism in tropical trees. Canada Dept. Forestry, For. Ent. & Path. Br., Bi-monthly Prog. Rept. 17(5):2.
- Vaartaja, O., W.H. Cram and G.A. Morgan. 1961. Damping-off etiology especially in forest nurseries. Phytopathology 51:35-42.
- Vaartaja, O., J. Wilner, W.H. Cram, P.J. Salisbury, A.W. Crookshanks and G.A. Morgan. 1964. Fungicide trials to control damping-off of conifers. United States Dept. Agriculture, Crops Res. Div., Agr. Res. Ser., Plant Disease Reporter 48(1):12-15.
- Van Groenewoud, H. 1953. Openings in white spruce stands at Candle Lake, Saskatchewan. Canada Dept. Agriculture, Sci. Serv., Div. For. Biol., Bi-monthly Prog. Rept. 9(3):3.

- Van Groenewoud, H. 1956. A root disease complex in Saskatchewan white spruce. *For. Chron.* 32:11-13.
- _____ 1960. Methods and samplers for obtaining undisturbed soil samples in the forest. *Soil Sci.* 90(5):272-274.
- _____ 1961. Variation in pH and buffering capacity of the organic layer of grey wooded soils. *Soil Sci.* 92(2):100-105.
- _____ 1963. A simple method for integrated-light measurements. *Ber. geobot. Inst. ETH, Stiftg Rübél, Zürich* 34.
- _____ 1965. An analysis and classification of white spruce communities in relation to certain habitat features. *Canad. Jr. Bot.* 43:1025-1036.
- Waldron, R.M. 1957. The amount and viability of seed from cones of different ages - black spruce. Canada Dept. Northern Affairs and National Resources, For. Br., For. Res. Div., Unpublished. 7 p.
- _____ 1959a. Experimental cutting in a mixedwood stand in Saskatchewan, 1924. Canada Dept. Northern Affairs and National Resources, For. Br., For. Res. Div., Tech. Note No. 74. 14 p.
- _____ 1959b. Hazel foliage treatments to reduce suppression of white spruce reproduction. Canada Dept. Northern Affairs and National Resources, For. Br., For. Res. Div., Tech. Note No. 75. 17 p.
- _____ 1961a. Seeding white spruce at the base of aspen. *For. Chron.* 37:224-228.
- _____ 1961b. Girdling, basal spraying and frilling of mature aspen. *Timber of Canada.* Dec. 1961. 2 p.
- _____ 1961c. Seedbed preparation for white spruce regeneration in the white spruce-aspen stands in Manitoba. Canada Dept. Forestry, For. Res. Br., Mimeo. 61-19. 15 p.
- _____ 1962. The effects of certain climatic factors on the terminal growth of white spruce at the Riding Mountain Forest Experimental Area in Manitoba. Thesis submitted to the University of Toronto. 99 p.
- _____ 1963a. Observations on aspen suckering in Manitoba and Saskatchewan. Canada Dept. Forestry, For. Res. Br., Unpublished. 18 p.
- _____ 1963b. August-November seed and litter fall in a mature white spruce stand. *For. Chron.* 39:333-334.

- Waldron, R.M. 1964a. The effect of preplanting ground treatment on early survival and growth of planted white spruce. United States, Dept. Agriculture, For. Serv., Tree Planters Notes No. 65:6-8.
- _____ 1964b. Annual meteorological summaries for the Riding Mountain Forest Experimental Area. Canada Department of Forestry, For. Res. Br. Unpublished. 64-MS-24. 8 p. and tables.
- _____ 1965a. Annual cone crops of white spruce in Saskatchewan and Manitoba, 1923-1964. Canada Dept. Forestry, For. Res. Br. Unpublished. 65-MS-11. 34 p.
- _____ 1965b. Cone production and seedfall in a mature white spruce stand. For. Chron. 41:314-329.
- _____ 1966. Factors affecting natural white spruce regeneration on prepared seedbeds at the Riding Mountain Forest Experimental Area, Manitoba. Canada Dept. Forestry and Rural Development, For. Br., Dept. Publ. No. 1169, 41 p.
- Waldron, R.M. and J.H. Cayford. 1961a. Results of a 1936 thinning in a two-storied stand of jack pine and black spruce in western Manitoba. Mimeo 61-13. 10 p.
- _____ 1961b. Results of an examination of black spruce cut-over areas in northern Manitoba. Canada Dept. Forestry, For. Res. Br. Unpublished. 15 p.
- _____ 1967. Improved germination of white spruce seed by increasing moisture content with absorptive powders. For. Chron. 43:149-154.
- Walker, N.R. 1967. Spraying too early damages pine plantations. For. Chron. 43:239-241.
- Warren, G.L. 1954. The spruce needle worm, Dioroctria reniculella Grt. as a predator of spruce budworm. Canada Dept. Agriculture, Sci. Serv., For. Biol. Div., Bi-monthly Prog. Rept. 10(3):2.
- _____ 1956a. The effect of some site factors on the abundance of Hypomolyx piceus (Coleoptera; Curculionidae). Ecol. 37:132-139.
- _____ 1956b. Root injury to conifers in Canada by species of Hyllobius and Hypomolyx (Coleoptera: Curculionidae). For. Chron. 32:7-10.
- _____ 1956c. Observations on the origin of infestations of the pine root collar weevil in plantations. Canada Dept. Agriculture, Sci. Serv., For. Biol. Div., Bi-monthly Prog. Rept. 12(3):2.

- Warren, G.L. 1956d. pH and the incidence of attack by Hypomolyx piceus (Deg.). Canada Dept. Agriculture, Sci. Serv., For. Biol. Div., Bi-monthly Prog. Rept. 12(4):2.
-
1958. A method of rearing bark- and cambium-feeding beetles with particular reference to Hylobius warreni Wood (Coleoptera: Curculionidae). Canad. Ent. 90:425-428.
-
- 1960a. External anatomy of the adult of Hylobius warreni Wood (Coleoptera: Curculionidae) and comparison with H. pinicola (Couper). Canad. Ent. 92:321-341.
-
- 1960b. Progress in the artificial rearing of Hylobius warreni Wood. Canada Dept. Agriculture, Res. Br., For. Biol. Div., Bi-monthly Prog. Rept. 16(6):2.
- Warren, G.L. and R.D. Whitney. 1951. Spruce root borer (Hypomolyx sp.) root wounds, and root diseases of white spruce. Canada Dept. Agriculture, Sci. Serv., Div. For. Biol., Bi-monthly Prog. Rept. 7(4):2.
- Warren, G.L. and V. Hildahl. 1963. Report on white grub damage in a red pine plantation in southeastern Manitoba. Canada Dept. Forestry, For. Ent. & Path. Br., Int. Rept., For. Ent. Lab., Winnipeg. 8 p.
- Warren, G.L. and W.G.H. Ives. 1964. A preliminary study of the chemical control of white grubs in conifer plantations in southeastern Manitoba. Canada Dept. Forestry, For. Ent. & Path. Br., For. Ent. Lab., Winnipeg, Infor. Rept. 10 p.
- Webb, F.E. 1963. A history of forest entomology in Manitoba. Proc. Ent. Soc. of Manitoba. 19:3-15.
- Weegar, H.H. and H. van Groenewoud. 1965. A hydraulic inserter for installing fibre-glass soil moisture units. Canad. Jr. Soil Sci. 45:241-243.
- Whitney, R.D. 1952a. Relationship between entry of root-rotting fungi and root-wounding by Hypomolyx and other factors in white spruce. Canada Dept. Agriculture, Sci. Ser., Div. For. Biol., Bi-monthly Prog. Rept. 8(1):2.
-
- 1952b. Root diseases of balsam fir. Canada Dept. Agriculture, Sci. Serv., Div. For. Biol., Bi-monthly Prog. Rept. 8(5):2.
-
- 1961a. Stand opening disease and the pathogenicity of Polyporus tomentosus Fr. on white spruce (Picea glauca (Moench) Voss). Canada Dept. Agriculture, Res. Br., For. Biol. Div., Int. Rept. 1960-1. For. Biol. Lab., Saskatoon, Sask. 97p.

- Whitney, R.D. 1961b. Root wounds and associated root rots of white spruce. For. Chron. 37(4):401-411.
-
1962. Studies in forest pathology. 24. Polyporus tomentosus Fr. as a major factor in stand-opening disease of white spruce. Canad. Jr. Bot. 40:1631-1658.
-
- 1963a. Artificial infection of small spruce roots with Polyporus tomentosus. Phytopathology 53:441-443.
-
- 1963b. White birch mortality at Candle Lake, Saskatchewan. Canada Dept. Forestry, For. Ent. & Path. Br., Bi-monthly Prog. Rept. 19(1):3.
-
- 1964a. Inoculations of eight Saskatchewan trees with Polyporus tomentosus. Canada Dept. Forestry, For. Ent. & Path. Br., Bi-monthly Prog. Rept. 20(5):3.
-
- 1964b. Hardwoods as inoculum carriers for Polyporus tomentosus inoculations. Phytopathology 54(12):1484-1485.
-
1965. Mycorrhiza-infection trials with Polyporus tomentosus on spruce and pine. For. Sci. 11:265-270.
-
- 1966a. Germination and inoculation tests with basidiospores of Polyporus tomentosus. Canad. Jr. Botany 44:1333-1343.
-
- 1966b. Susceptibility of white spruce to Polyporus tomentosus in healthy and diseased stands. Canad. Jr. Botany 44:1711-1716.
- Whitney, R.D. and J. Belcher. 1963. Viability of basidiospores of Polyporus tomentosus Fr. following storage. Canada Dept. Forestry, For. Ent. & Path. Lab., Bi-monthly Prog. Rept. 19(5):2.
- Whitney, R.D. and H. van Groenewoud. 1952. Openings in white spruce stands at Candle Lake, Saskatchewan. Canada Dept. Agriculture, Sci. Serv., Div. For. Biol., Bi-monthly Prog. Rept. 8(6):2.
-
1964. The rate of advance of stand-opening disease over a ten-year period in white spruce at Candle Lake, Sask. For. Chron. 40:308-312.
- Wilner, J. and O. Vaartaja. 1958. Prevention of injury to tree seedlings during cellar storage. For. Chron. 34:132-138.
- Wilson, G.M. 1952. Thinning jack pine, Nisbet Forest Reserve, Saskatchewan. Canada Dept. Resources and Development, For. Res. Div. Silv. Res. Note. No. 99. 24 p.
-
1961. Thinning 30-year-old jack pine. Canada. Division of Forest Research, For. Br., Dept. For. and Devel. Silv. Leaflet. No. 52. 3 p.

- Williams, D.E. 1955. Fire hazard resulting from jack pine slash. Canada Dept. Northern Affairs and National Resources, Forestry Branch, For. Res. Div., Tech. Note No. 22. 17 p.
- _____ 1960. Prescribed burning for seedbed preparation in jack pine types. Pulp and Paper Mag. Canada, Woodlands Rev., April. p. 38, 40, 42.
- Wong, H.R. 1950a. Sawfly larvae of the sub family Nematinae attacking conifers in the forests of the Canadian Prairies. M.Sc. Thesis, Mich. State Univ. 1950. 33 p.
- _____ 1950b. Rearing methods. Proc. Ent. Soc. Man. 6:14-15.
- _____ 1951. Cocoons of some sawflies that defoliate forest trees in Manitoba and Saskatchewan. Excerpt from 82nd Annual Report of the Ent. Soc. of Ontario. p. 61-67.
- _____ 1954. Common sawflies feeding on white birch in the forested areas of Manitoba and Saskatchewan. Canad. Ent. 86:154-158.
- _____ 1955. Larvae of the nearctic species of Anoplonyx (Tenthredinidae, Hymenoptera). Canad. Ent. 87:224-227.
- _____ 1956. Preliminary notes on intersexes and gynandromorphs of the larch sawfly. Canad. Ent. 88:545.
- _____ 1957. Sawflies of the genus Platycampus Schiodte on trembling aspen in the Canadian Prairies. Canada Dept. Agriculture, Sci. Serv., For. Biol. Div., Bi-monthly Prog. Rept. 13(4):2.
- _____ 1958a. The morphology of the ultimate larval instar of the larch sawfly, Pristiphora erichsonii (Htg.) (Tenthredinidae: Hymenoptera). Canada Dept. Agriculture, Sci. Serv., For. Biol. Div., Int. Rept. 1958-2. For. Biol. Lab., Winnipeg, Man. 17 p.
- _____ 1958b. In B.M. McGugan. Forest Lepidoptera of Canada recorded by the forest insect survey. Vol. 1. Canada Dept. Agriculture, For. Biol. Div., Publ. No. 1034:1-76.
- _____ 1960a. Evolution of the sawfly genus Pristiphora. Canada Dept. Agriculture, Res. Br., For. Biol. Div., Int. Rept. 1960. For. Biol. Lab., Winnipeg, Manitoba. 110 p.
- _____ 1960b. Preliminary notes on the life history of Herculia thymetusalis Wlk. Canada Dept. Agriculture, Res. Br., For. Biol. Div., Bi-monthly Prog. Rept. 16(1):3.
- _____ 1962. In R.M. Prentice. Forest Lepidoptera of Canada recorded by the forest insect survey. Vol. II. Canada Dept. Forestry, For. Ent. & Path. Br., Bull. 128:77-281.

- Wong, H.R. 1963a. The external morphology of the adults and ultimate larval instar of the larch sawfly, Pristiphora erichsonii (Htg.) (Hymenoptera: Tenthredinidae). *Canad. Ent.* 95:897-921.
- _____ 1963b. In R.M. Prentice, Forest Lepidoptera of Canada, recorded by the forest insect survey, Vol. 3. Canada Dept. Forestry, For. Ent. & Path. Br. Publ. 1013.
- _____ 1964. Wood borers. Proc. International Great Plains Conference of Entomologists. 37:18-19.
- _____ 1966. A new species of Allantus Panzer on birch (Hymenoptera: Tenthredinidae). *Canad. Ent.* 98:852-854.
- _____ 1967. The Nematine genera Eitelius and Micronematus in North America (Hymenoptera: Tenthredinidae). *Canad. Ent.* 99:1101-1104.
- Wong, H.R. and W.J. Turnock. 1949. Forest Insect Survey. Canada Dept. Agriculture, Sci. Serv., Div. Ent., Bi-monthly Prog. Rept. 5(4):2.
- Wong, H.R. and H.H. Ross. 1960. A New Nearctic species of the genus Pristiphora Latreille (Hymenoptera: Tenthredinidae). *Canad. Ent.* 92:193-198.
- Wong, H.R. and J.J. Lawrence. 1963. Pine shoot moth in Manitoba. Canada Dept. Forestry, For. Ent. & Path. Br., Bi-monthly Prog. Rept. 19(2):2.
- Wong, H.R. and B.B. McLeod. 1965a. The host and distribution of Agilus criddlei Frost in Canada. Canada Dept. Forestry, Bi-monthly Prog. Rept. 21(4):3.
- _____ 1965b. Two species of gall-producing Saperda in Manitoba and Saskatchewan. Canada Dept. Forestry, Bi-monthly Prog. Rept. 21(5):3.
- Wong, H.R. and R.B. Benson. 1965. A new species of Pristiphora from Brazil. (Tenthredinidae: Hymenoptera). *Canad. Ent.* 97:779-782.
- Wong, H.R. and J.C.E. Melvin. 1965. Insects and mites associated with black knot of cherry, Dibotryon morbosum (Schw.) Theiss and Syd. Canada Dept. Forestry, Bi-monthly Prog. Rept. 21(4):3.
- _____ 1967. The leaf roller Pseudexentera oregonana Wlshm. Canada Dept. Forestry and Rural Development, Bi-monthly Res. Notes. 23:3-4.
- Wong, H.R., J.D. Smith and V. Hildahl. 1949. Annual report of the Forest Insect Survey. Canada Dept. Agriculture, Sci. Serv., Div. Ent., p. 70-84.

- Wong, H.R., W.J. Turnock and V. Hildahl. 1950. Annual report of the Forest Insect Survey. Canada Dept. Agriculture, Sci. Serv., Div. For. Biol., p. 69-82.
- Wong, H.R., V. Hildahl and R.M. Prentice. 1951. Annual report of the Forest Insect and Disease Survey. Canada Dept. Agriculture, Sci. Serv., Div. For. Biol., p. 66-82.
- Wong, H.R., R.M. Prentice and V. Hildahl. 1952. Annual report of the Forest Insect and Disease Survey. Canada Dept. Agriculture, Sci. Serv., Div. For. Biol., p. 79-91.
- Wong, H.R., J.A. Drouin and B.B. McLeod. 1959. Observations on a "complex" of insects in tops of black spruce in Manitoba and Saskatchewan. *Canad. Ent.* 91:543-548.
- Wong, H.R., B.B. McLeod and J.A. Drouin. 1963. Saperda calcarata Say in root collar of poplars. Canada Dept. Forestry, For. Ent. & Path. Br., Bi-monthly Prog. Rept. 19(5):2.
-
1964. A preliminary study of poplar root Saperda in Manitoba and Saskatchewan. Canada Dept. Forestry, For. Ent. & Path. Br., Int. Res. Rept., For. Ent. Lab., Winnipeg, Man. 11 p.
- Wong, H.R., B.B. McLeod and J.C.E. Melvin. 1965. Life histories of Saperda concolor Lec. and Saperda populena moesta Lec. in Manitoba and Saskatchewan (Coleoptera: Cerambycidae). Canada Dept. Forestry, For. Res. Lab., Winnipeg, Man. Int. Rept. MS-34. 10 p.
- Wong, H.R., A.E. Campbell and J.J. Lawrence. 1966a. Damage caused by Eucosma gloriola Heinrich in three different forest sites in the Sandilands Forest Reserve, Manitoba. Canada Dept. Forestry and Rural Development, Bi-monthly Res. Notes 22(6):4.
- Wong, H.R., R.N. Sinha and D.R. Robinson. 1966b. Common names of insects and mites associated with stored products in Canada. Man. Dept. Agric. and Conservation, Publ. 424. 12 p.
- Zalasky, H. 1954. Annual report of the Forest Insect and Disease Survey. Canada Dept. Agriculture, Sci. Serv., For. Biol. Div., p. 97-101.
-
1955. Annual report of the Forest Insect and Disease Survey. Canada Dept. Agriculture, Sci. Serv., For. Biol. Div., p. 82.
-
1958. Annual report of the Forest Insect and Disease Survey. Canada Dept. Agriculture, Sci. Serv., For. Biol. Div., p. 72-73.
-
1959. Annual report of the Forest Insect and Disease Survey. Canada Dept. Agriculture, For. Biol. Div., p. 79-80.

- Zalasky, H. 1960. Annual report of the Forest Insect and Disease Survey. Canada Dept. Forestry, For. Ent. and Path. Br., p. 78-80.
- _____ 1962. Germination of Melanconium lineare seed. Canad. Jr. Bot. 40:1713-1714.
- _____ 1964a. The histopathology of Macrophoma tumefaciens infections in black poplar. Canad. Jr. Bot. 42:385-391.
- _____ 1964b. Nomenclature and description of Diplodia tumefaciens (Shears) - Macrophoma tumefaciens Shear and Hubert. Canad. Jr. Bot. 42:1049-1055.
- _____ 1964c. Microconidial state of Cucurbitaria staphula Dearness ex R.H. Arnold and R.C. Russell. Canad. Jr. Bot. 42:1586-1588.
- _____ 1965a. Morphology of Ceratocystis fimbriata in aspen. Canad. Jr. Bot. 43:625-626.
- _____ 1965b. Additional hosts of Diplodia tumefaciens (Shear) Zalasky (Macrophoma tumefaciens Shear). Plant Disease Reporter 49(1):50.
- _____ 1966. Penetration and initial establishment of Nectria galligena. In manuscript.
- Zalasky, H. and C.G. Riley. 1956. Annual report of the Forest Insect and Disease Survey. Canada Dept. Agriculture, Sci. Serv., For. Biol. Div., p. 71.
- _____ 1963. Infection tests with two caulicolous rusts of jack pine in Saskatchewan. Canad. Jr. Bot. 41:459-465.
- Zalasky, H. and O.K. Fenn. 1965. Inoculation tests with Diplodia tumefaciens (Shear) Zalasky. Canada Dept. Forestry, Bi-monthly Prog. Rept. 21(6):3.
- Zoltai, S.C. 1967a. Soil survey of the Lac du Bonnet map sheet area. Part V, Forestry. Manitoba Soil Survey, Soils Rept. No. 15.
- _____ 1967b. Eastern outlets of Lake Agassiz. In: Life, Land and Water, Department Anthropology, University of Manitoba. Occasional Paper No. 1.
- Zoltai, S.C., J.P. Senyk, P. Gimbarzevsky and A. Kabzems. 1967. Land capability classification for forestry. Manitoba and Saskatchewan. In: Land capability classification for forestry. Canada Land Inventory Report No. 4:10-13.