

**Augmenting the existing survey hierarchy
or mountain pine beetle red-attack damage
with satellite remotely sensed data**

M.A. Wulder, J.C. White, B.J. Bentz, and T. Ebata

**Mountain Pine Beetle Initiative
Working Paper 2006-05**

**Natural Resources Canada, Canadian Forest Service,
Pacific Forestry Centre 506 West Burnside Road, Victoria, BC V8Z 1M5
(250) 363-0600 • www.pfc.cfs.nrcan.gc.ca**



**Augmenting the existing survey hierarchy
for mountain pine beetle red-attack damage
with satellite remotely sensed data**

M.A. Wulder^{1*}, J.C. White¹, B.J. Bentz², and T. Ebata³

Mountain Pine Beetle Initiative Working Paper 2006–05

¹ Natural Resources Canada, Canadian Forest Service, Pacific Forestry Centre, Victoria, British Columbia, Canada

² U.S. Department of Agriculture, Forest Service, Rocky Mountain Research Station, Logan, UT, USA

³ British Columbia Ministry of Forests, Forest Practices Branch, Harvesting and Silviculture Practices Section, Victoria, British Columbia, Canada

Corresponding author: M.A. Wulder. Telephone: 250-363-6090; fax: 250-363-0775; email:
mike.wulder@pfc.cfs.nrcan.gc.ca

This paper was previously published in the CIF/SAF 2004 Annual General Meeting Forestry Chronicle special issue.

Mountain Pine Beetle Initiative PO # 6.01

Natural Resources Canada
Canadian Forest Service
Pacific Forestry Centre
506 West Burnside Road
Victoria, British Columbia V8Z 1M5
Canada

Abstract

Estimates of the location and extent of the red-attack stage of mountain pine beetle (*Dendroctonus ponderosae* Hopkins) infestations are critical for forest management. The degree of spatial and temporal precision required for these estimates varies according to management objectives and the nature of the infestation. This paper outlines the range of information requirements associated with mountain pine beetle infestations, from the perspectives of forest inventory, planning, and modeling. Current methods used to detect and map red-attack damage form a hierarchy of increasingly detailed data sources. The capability of satellite-based remotely sensed data to integrate into this hierarchy and provide data that is complementary to existing survey methods is presented, with specific examples using medium (Landsat) and high (IKONOS) spatial resolution imagery. The importance of matching the information requirement to the appropriate data source is emphasized as a means to reduce the overhead associated with data collection and processing.

Keywords: mountain pine beetle, red attack, remote sensing, detection, Landsat, IKONOS.

Résumé

Les estimés sur la localisation et l'étendue des ravages sévères des infestations du dendroctone du pin (*Dendroctonus ponderosae* Hopkins) sont essentiels en aménagement forestier. Le niveau de précision spatiale et temporelle requis pour ces estimés varie en fonction des objectifs d'aménagement et la nature de l'infestation. Cet article souligne l'étendue des besoins d'information associés aux infestations du dendroctone du pin selon une perspective d'inventaire forestier, de planification et de modélisation. Les méthodes actuelles utilisées pour détecter et cartographier les dégâts sévères forment une hiérarchie croissante de sources de données détaillées. La capacité des données en provenance de la télédétection de faire partie de cette hiérarchie et de fournir des données qui sont complémentaires aux méthodes de sondage actuelles est illustrée au moyen d'exemples spécifiques utilisant l'imagerie à résolution spatiale moyenne (Landsat) et à haute résolution (IKONOS). L'importance de faire concorder les besoins d'information avec la source appropriée de données est mise en évidence afin de réduire les coûts associés à la collecte et au traitement des données.

Mots clés : dendroctone du pin, attaque sévère, télédétection, Landsat, IKONOS

Table of Contents

Abstract / Résumé	3
Introduction	7
Information requirements for forest management	8
Forest inventory	8
Forest planning	8
Forest modeling	9
Existing methods for detection and mapping of mountain pine beetle red attack	10
Satellite remote sensing for detection and mapping of mountain pine beetle red attack	14
Medium Spatial Resolution Data: Landsat TM and ETM+	16
Sensor Specifications, Data Cost and Availability	16
Application Examples	16
Single-date Landsat imagery	16
Multi-date Landsat imagery	19
Potential and Limitations	20
High Spatial Resolution Data: IKONOS	21
Sensor Specifications, Data Cost and Availability	21
Application Examples	22
Potential and Limitations	23
Integration of remotely sensing/GIS technology	24
Methods	24
Summary and Conclusions	24
Acknowledgements	25
References	26

Introduction

The mountain pine beetle (*Dendroctonus ponderosae* Hopkins) has a range covering much of the western United States and Canada. A major host, lodgepole pine (*Pinus contorta* Dougl. ex Loud. var. *latifolia* Engelm.), experiences extensive mortality when susceptibility to attack is high, particularly during sustained periods of warm, dry weather over several years, and when abundant reserves of host trees are accessible to the beetles. These susceptibility and host conditions have converged in recent years, leading to outbreak levels of insect populations in the United States and British Columbia. In British Columbia, the outbreak has reached historic proportions. From 2002 to 2003, the area infested with mountain pine beetle doubled, increasing from approximately 2.0 million hectares to 4.2 million hectares (British Columbia Ministry of Forests 2003a).

In general, the mountain pine beetle reproduces at a rate of one generation per year under typical climate conditions in British Columbia (Safranyik et al. 1974). While exceptions occur, adult beetles attack trees in August, and lay eggs that develop into mature adults approximately one year later. The beetles must attack in large numbers to overcome the defences of a healthy tree; this is referred to as mass-attack. Once killed, but while still with green foliage, the host tree is in the green-attack stage. The foliage of the host tree changes gradually. Twelve months after being attacked, more than 90% of killed trees will have red needles (red attack). Three years after being attacked, most trees will have lost all needles (grey attack) (British Columbia Ministry of Forests 1995). The change in foliage colour, particularly to red, may be detected with remote sensing instruments (Bentz and Endreson 2004).

The infestation cycle of the mountain pine beetle is well understood (Cole et al. 1976). The mountain pine beetle is endemic to North American lodgepole pine forests and, at low population levels, infestation is limited to single infested trees. These trees often have some weakness that predisposes them to infestation. At the incipient level, favourable conditions (e.g., weather) facilitate an increase in the beetle population, allowing the beetles to overcome defences of healthy trees in a phenomenon known as mass-attack. Populations persist at this level due to continued favourable conditions, ultimately resulting in an increase in the mountain pine beetle population to the epidemic or outbreak level. Outbreaks are characterized by large populations of beetles dispersed across the landscape. These outbreak populations are very resilient to natural mortality, and these populations can rebound following widespread mortality (Carroll and Safranyik 2004).

From a forest management perspective, estimates of the location and extent of mountain pine beetle red attack are critical; however, the degree of precision required for these estimates varies according to the management objective under consideration (i.e., strategic, tactical, operational) and the nature of the infestation (i.e., endemic, incipient, outbreak). The range of information requirements is matched by a hierarchy of different data sources that are currently used to map red-attack damage (e.g., aerial overview surveys, helicopter surveys, aerial photography, field surveys), with each data source offering a different level of detail on location and extent. In this communication, the use of remotely sensed data to map mountain pine beetle red attack is presented as a source of information that can assist in satisfying those information requirements. In the context of this paper, the term remote sensing refers to satellite-based remotely sensed data that is collected in digital form (e.g., Landsat ETM+, SPOT, IKONOS, QuickBird). These forms of remote sensing provide new opportunities for detection and mapping of mountain pine beetle red attack to augment or complement existing data sources.

Maps of infestation location and extent drive mitigation and prediction activities related to attacks by mountain pine beetle. For example, the placement of field crews relies on accurate detection of insect activities over large areas. Output from decision support models are improved through the inclusion of accurate maps of attack conditions. The integration of remotely sensed data with existing forest inventories in a Geographic Information System (GIS) environment generates

value-added information for forest managers. In turn, the forest inventory provides a context for, and source of, validation data for red-attack information extracted from the remotely sensed data.

The objective of this paper is to provide practical guidelines to potential users regarding those satellite-based remotely sensed data sources that are most appropriate for specific information needs associated with detection and mapping of mountain pine beetle red attack. These remotely sensed data sources cannot supplant existing methods of data collection; however, this paper explores the manner in which these new data sources may fit into the existing data hierarchy by providing complementary information or filling data gaps. Issues addressed include the potential and limitations of particular data sources, the processing requirements or level of effort associated with using these data, and the range of results that are attainable, in terms of accuracy results reported in the literature. Examples of each pairing of data source and information need will be illustrated by an example.

Information requirements for forest management

Business drivers or information needs constrain the collection of data. The information needs of forest managers, in the context of addressing an infestation of mountain pine beetle, range from strategic planning over large areas to detailed and precise locations for sanitation logging and individual tree treatment. Consequently, the scale of current information collection ranges from very broad (aerial overview sketch mapping) to more detailed (helicopter Global Positioning System (GPS) surveys and maps of infested stands derived from aerial photography), to even more detailed ground surveys for layout of blocks for sanitation logging or fall and burn treatment. Information regarding mountain pine beetle location and extent is required for forest inventory, planning and modeling.

The Canadian Forest Service held a workshop in June, 2003, to provide focus for remote sensing research priorities for the Federal Mountain Pine Beetle Initiative (Wiat 2003). The key business drivers, as described by provincial government and industrial forest managers in attendance at the workshop, included provincial-level red-attack mapping, and operational mapping of red attack for layout and sanitation. The latter was identified as having the highest priority. As a result, this paper focuses exclusively on the information requirements associated with the detection and mapping of mountain pine beetle red attack. The following sections address the specific business drivers associated with forest inventory, forest planning, and forest modeling.

Forest inventory

Forest inventories capture forest composition and distribution at a specific point in time. Growth and yield projections, updates, and re-inventories are all methods used to keep forest inventories current. The length of forest inventory-update cycles varies by jurisdiction, ranging from 1 to 10 years. When infestations of mountain pine beetle reach the outbreak level, the damage caused by the beetles can dramatically and rapidly alter the composition of forests, thereby accelerating the need to update forest inventories. Maintenance of forest inventories is critical, as they often form the cornerstone for forest planning and modeling activities. In order to maintain inventories for mountain pine beetle-related disturbance, a timely and cost-effective data source is required that can easily be integrated into existing inventories. Apart from updating inventories with the impact of the beetle (e.g., mortality, and area or percent of the stand affected), updates to stand volume are also necessary, as forest planning activities are often dependent on accurate volume information. Methods for integrating information on beetle impacts into forest inventories are possible using a range of conventional and remotely sensed data sources (Wulder et al. 2005).

Forest planning

Forest planning typically occurs at three levels: strategic, tactical, and operational. At the strategic level, forest managers are primarily interested in planning over long periods of time (several hundred years) and large spatial extents (province or state level); strategic plans address broad objectives and, as a result, are normally satisfied with coarse-level information. Strategic-level

information on the intensity and spatial extent of the mountain pine beetle infestation is required for activities such as timber supply review, biodiversity conservation, and land-use planning (Wiat 2003). Knowledge of the current level of infestation and predictions of future spread of the infestation help to ensure that future management options are not compromised by current operational activities in addressing the infestation. A key component of strategic-level planning is the modeling of various management scenarios and treatment activities over a protracted timeframe, in order to determine the impact of management actions on the beetle population, spread of the beetle, and total wood volume (Eng et al. 2004).

Tactical-level planning commonly addresses a five- to twenty-year period and a spatial extent analogous to a landscape or larger management unit. In a forestry context, this level of planning provides the structure for implementing the broad objectives outlined in the strategic plans, and includes activities such as scheduling of harvesting and road construction. Operational plans are considered low-level plans, and provide specific details necessary to execute each activity scheduled in the tactical plan. Block layout and road engineering are examples of site-specific detail included in an operational plan. Overall, forest planning requires information on the red-attack stage of mountain pine beetle infestations, at various spatial and temporal resolutions—and with varying levels of accuracy and precision.

The timeframes associated with the typical planning scenarios described above are completely upset when an outbreak of mountain pine beetle occurs, resulting in atypical planning cycles. For example, in British Columbia, higher-level strategic plans with very short timeframes are being completed to drive and expedite annual allowable cut reviews, which have resulted in harvesting increases (British Columbia Ministry of Forests 2004). The data driving these short-term strategic plans includes aerial overview sketch mapping and projections of beetle spread, as derived from stand- and landscape-level models of beetle impact and spread dynamics. Under an epidemic scenario, tactical-level planning often occurs on an annual basis. Overview sketch mapping is used to identify areas suitable for suppression that will, with input from more detailed aerial survey data, generate operational (harvesting and treatment) plans.

Forest modeling

Several different mountain pine beetle-focused models have been developed at both the stand level and the landscape level (e.g., Shore and Safranyik 1992). These models attempt to address a range of questions:

- Where and when will the beetles attack?
- How severe will the damage be?
- What management response will be most effective?

In the specific case of a model designed to describe the evolution of spatial and temporal patterns of mountain pine beetle attack within a lodgepole pine forest, data describing both the currently infested and uninfested stems within the forest are required (Heavilin et al. In press). In this model, each cell represents: the density of red-attack trees; a measure of the current beetle population that will emerge to infest new trees the following year; or the number of live trees available for attack in future years. The model couples mountain pine beetle density-dependent attack dynamics and dispersal expectations with a Leslie matrix that describes the changing demographics of the forest to predict the yearly spread of infested trees across the landscape. Models of this type require landscape-scale information regarding the number of red-attack trees and live trees, summed to a given resolution.

As previously indicated, the ability to model the impact of various beetle management scenarios is an important component of strategic-level forest planning. Inclusion of beetle impacts in

management scenarios requires an accurate depiction of beetle population dynamics. Several models have been developed to describe the temperature-dependent growth of mountain pine beetle populations (Safranyik et al. 1975; Bentz et al. 1991; Logan and Bentz 1999; Carroll et al. 2004; Logan and Powell 2004). A population dynamics model is currently being developed for mountain pine beetle, allowing the dynamics of beetle and host to be explored in the context of various management control options (Riel et al. 2004). Other models predict the duration and impact of an infestation by diameter-at-breast-height class, or predict the stand mortality (percentage of basal area killed) based on the stand-susceptibility rating (Bentz et al. 1993; Shore et al. 2000).

Forest models that attempt to predict the spread and potential magnitude of an infestation require information on the location and extent of mountain pine beetle-infested trees (Heavilin et al. In press; Powell et al. 2000). Such predictive models may be calibrated by baseline information characterizing the stands currently infested or stands that have been infested in the past. Information on beetle impacts may be used to parameterize models and validate assumptions, or support the backcasting of models by providing tangible data to reconstruct the history of beetle-infestation spread (within the limits of sensor lifespan). As is the case with forest planning, the information requirements of forest modeling that are inclusive of bark beetle populations are quite variable and depend on the scale of the model and its temporal parameters (Biesinger et al. 2000). For example, some models require area-based estimates of beetle severity or mortality; other models require information on individual tree impacts.

Existing methods for detection and mapping of mountain pine beetle red attack

Existing methods for red-attack detection and mapping occur in a hierarchy of data types from coarse scale aerial overview surveys, to very detailed ground surveys. Each level of this data hierarchy satisfies the specific information requirements of forest inventory, modeling, and planning. A summary of existing methods of survey and their associated costs are provided in Table 1; a more detailed review is available in Wulder et al. (2004).

Aerial overview surveys are often the most appropriate techniques for large-area surveying of mountain pine beetle impacts due to the inherent speed and efficiency with which they can be completed. The Canadian Forest Service was responsible for conducting the overview surveys between 1914 and 1995; the provincial British Columbia Ministry of Forests assumed responsibility for the surveys in 1995 (British Columbia Ministry of Forests 1995). The aerial overview surveys, conducted on an annual basis, are designed to cover the maximum possible area, and provide general reconnaissance on trends in forest health at the provincial level. Most importantly, the information gathered in the aerial overview survey is made available for strategic planning within three months of survey completion. The objective of the overview survey is to detect and delineate a wide variety of forest health concerns at map scales ranging from 1:100,000 to 1:250,000. To meet this objective, surveys are conducted using fixed-wing aircraft that fly at speeds of 150 to 170 km/hour, at altitudes ranging from 500 to 1000 metres (British Columbia Ministry of Forests 2000). On a strategic level, this information is used to direct resources to address forest health concerns, particularly where there are increasing populations of specific forest pests. In the United States, similar aerial surveys are conducted by the Forest Health Protection branch of the USDA Forest Service (Schraeder-Patton 2003; Harris 2004).

Table 1. Methods currently used to detect and map mountain pine beetle infestations in British Columbia, Canada.

METHOD	SCALE	COST/ HA	DESCRIPTION	CORRESPONDING INFORMATION NEED
Aerial overview survey	1:100,000 to 1:250,000	\$0.01 ¹	General location of damage, approximate gross area of damage, general trend in damage from one year to another at the provincial level. Note: The mountain pine beetle is only one of many forest health issues addressed in the sketch mapping survey.	Used for strategic planning, the identification of areas requiring more intensive survey, and for the allocation of mitigation resources (Ministry of Forests, 2003b).
Helicopter GPS survey	Variable (Output to 1:20,000)	\$0.15 ²	A GPS position is taken at the centroid of individual infestation clusters. For each cluster, the number of infested trees is estimated and the infesting insect species recorded. The size of the clusters may vary; cluster area, shape and compactness are not recorded, rendering the helicopter GPS data difficult for subsequent use by field crews. British Columbia spends approximately \$2 million on helicopter GPS surveys annually.	The information collected from helicopter GPS surveys is used primarily for expediting the deployment of field crews to areas which are eligible for suppression activities, or which require sanitation harvesting.
Photo surveys (measle maps)	1:30,000 aerial photography	\$0.21 ³	In spring 2004, British Columbia decided to replace helicopter GPS surveys with measle maps generated from 1:30,000 air photos. Photos must be collected according to rigorous photogrammetric standards established by the province. These standards facilitate the use of the photos for other applications (i.e. base mapping) and thereby aid in recovery of the acquisition costs.	Similar to helicopter GPS surveys.
Field surveys	1:1	\$11 ⁴	Ground surveys of mountain pine beetle are intended to verify information gathered from aerial surveys and take two forms: walkthroughs and probes. Walkthroughs are designed to delineate most recent attack and are undertaken if the aerial survey indicates an area is determined to be less than 5% red-attack or more than 25% red-attack. If the aerial survey determines that the area is between 5% and 25% red-attack, a full probe is conducted, provided the area is harvestable. Walkthroughs are unsystematic, reconnaissance type surveys, used to assess the stand and identify spatially discrete pockets of infestation. Probes are systematic strip surveys that collect very detailed information on stand conditions.	The information gathered from the probes is used for the purposes of designing logging and sanitation plans.

¹ Tim Ebata, personal communication, October 8, 2004

² <http://www.for.gov.bc.ca/hcp/fia/landbase/dfam/AerialDetectionStandardforBarkBeetleManagement.doc>

³ Tim Ebata, Personal communication, October 7, 2004. Although the per hectare cost of the photography is the same as the helicopter GPS surveys, the total costs for the measle maps are estimated to be significantly higher. Helicopter GPS surveys focus on smaller areas and can be cancelled for logistical reasons (i.e. inclement weather). Approximately twice as much area was covered with photography that would have been done with helicopter GPS, however the airphotos are useful for a wide range of different applications.

⁴ Wiart, R. 2003. Detecting and mapping mountain pine beetle infestations: Defining the role of remote sensing and establishing research priorities. Workshop summary report. June 26-27, 2003, Vancouver, British Columbia

Aerial overview surveys provide sufficient information to characterize the general location of damage, to approximate the gross area of damage, and to indicate the general trend in damage from one year to the next. However, the shortcomings of these overview surveys, which include large errors of omission when damage is very light, a lack of rigorous positional accuracy, and the variability in estimates of attack magnitude, limit the utility of overview surveys in directing operational activities. What these surveys do provide, however—especially in a province the size of British Columbia with vast tracts of managed forest—is an initial stratification of the landscape that can direct the collection of more detailed infestation information with greater spatial accuracy. The red-attack detection information from the aerial sketch mapping program is primarily used for strategic planning, the identification of areas requiring more intensive survey, and for the allocation of mitigation resources (British Columbia Ministry of Forests 2003a). In addition, this information is used to adjust the annual allowable cut and timber supply forecasts (British Columbia Ministry of Forests 2003b).

The issues associated with location error and attribute accuracy of overview sketch mapping are not significant when the aerial overview survey program is considered within the context for which it was created. In British Columbia, the survey program has been effectively meeting provincial-level information needs for several decades. The aerial overview survey has many advantages. Firstly, the program is cost effective: no other remotely sensed data source available today can provide information on the comprehensive range of forest health issues within the required timeframe, for a similar cost. Secondly, the interpreters' expertise can use cues to map the extent and severity of each pest and disease, such as the identification of tree species, and knowledge of pest habitats, past areas of infestation, and the spatial characteristics associated with each pest. Thirdly, the overview provides sufficient information to direct the allocation of resources for more detailed surveys over limited areas, as required. Finally, the aerial overview survey is the only complete set of relatively consistently collected forest health data that exists for the majority of the provincial land base: it provides valuable historical context to infestations over time and space. Therefore, when considered within the context for which the overview surveys were intended, advantages of the aerial overview survey program far outweigh disadvantages.

In British Columbia, more detailed aerial surveys, conducted mainly for the detection and mapping of bark beetles over smaller areas, are the responsibility of forest districts or licensees. These surveys are normally completed at a scale of 1:20,000, using helicopters with Global Positioning Systems (GPS); a GPS position is taken at the centroid of individual infestation clusters. For each cluster, the number of infested trees is estimated and the damaging agent is recorded. The size of the clusters may vary; cluster area, shape, and compactness are not recorded (Nelson et al. 2004). The information collected from helicopter–GPS surveys is used primarily for expediting the deployment of field crews to find green attack in areas where suppression activities are recommended. An advantage over other survey methods is the low error of commission; the surveyor gets a good look at each crown, and can differentiate between porcupine girdling, flooding, mechanical damage, and bark beetle. The disadvantage is that there may be errors of omission if coverage by the helicopter–GPS survey is not systematic across areas of lodgepole pine forests.

In 2004, British Columbia experimented with the use of 1:30,000 conventional colour aerial photography for more detailed detection and mapping of red attack. Photos were acquired in those areas that had been identified for suppression in the province's strategic beetle management plan (British Columbia Ministry of Forests 2003a). The air photos were collected between July and mid-September, and were digitized (scanned) at high resolution (maximum of 14 microns). Red-attack damage was visually interpreted from the photos using digital photogrammetric software (softcopy) and an output "measle map" of red-attack areas was generated. The photos provide a permanent record of the survey and may be used for other purposes, such as the update of topographic base maps. The measle maps are a hybrid product

composed both of polygons (depicting broad areas of red attack), and points (providing specific location and number of red-attack trees).

Despite the many advantages of this form of survey, the B.C. Ministry of Forests may not be continuing with its use of air photos for red-attack detection due to several logistical issues. Firstly, the photos were collected to rigorous photogrammetric standards in order that the photos could be used for other applications, such as planimetric base mapping (Geographic Data BC 2005). Unfortunately, these standards prevented the collection of photos in conditions that were suitable for areas where red-attack mapping was a priority, but unacceptable according to the standards required to meet other base mapping uses (e.g., part of the flight line may have had too much cloud cover). Secondly, logistical considerations such as weather and contractual arrangements further confounded the success of the photography program. Air-photo acquisition requires significant planning upfront; in the context of a mountain pine beetle, this planning has to take place before there is a good sense of how the beetle population has fared over the winter. Finally, to achieve economies of scale, flight lines had to be designed to cross over many non-forested areas, as well as over areas considered to be unsuitable for beetle suppression. In contrast, the helicopter-GPS surveys have the advantage of collecting data in less than ideal conditions and in very specific locations. Furthermore, the helicopter surveys can be cancelled and redeployed in other areas with very short notice when evidence of significant changes in bark beetle management strategy becomes obvious (e.g., rapid population expansion of beetles in a specific area may negate suppression efforts; resources can therefore be reallocated to other areas).

Ground surveys of mountain pine beetle are intended to confirm information gathered from aerial surveys and to provide more detailed mortality estimates. Ground surveys vary in terms of the intensity, quality, and quantity of data collected, depending on survey objective. These surveys generally take two forms: walkthroughs or probes. In British Columbia, guidelines for using the appropriate ground survey method are provided by the provincial government (British Columbia Ministry of Forests 1995). When the aerial overview survey indicates that an area is < 5% red attack, walkthroughs are designed to delineate spatially discrete pockets of current (green) attack. Walkthroughs are unsystematic, reconnaissance-level surveys. They are often used to determine if more-detailed surveys are required. If the aerial survey determines that an area is between 5% and 25% red attack, a full probe is conducted if the area is harvestable. Full probes are systematic strip surveys that collect very detailed information on stand conditions. The information gathered from the probes is used in designing logging and sanitation plans. Finally, if an area is determined to be more than 25% red attack, walkthroughs may be conducted to verify the status of the insect population.

In reality, the forest licensees and forest district administrative staff already know where certain types of surveys need to be done, based on their experience and the operability of the area. In areas where a suppression strategy is being implemented, detailed aerial surveys will often automatically be scheduled, and where the detailed aerial survey identifies small patches of red-attack damage in marginally operable terrain, ground surveys will be scheduled to facilitate the layout of fall and burn treatments. This same information can be used to plan harvesting of damaged trees if terrain is suitable and it is economically viable for those doing the harvesting. For infestations that are located in operable areas, walkthroughs or modified full probes are conducted to delineate block boundaries that incorporate the greatest amount of green attack and to collect other information related to harvesting. If the infestations are small and require small-patch harvesting because they are near existing roads or cutblocks, a full probe is often used to attempt to minimize the harvest of uninfested volume.

Satellite remote sensing for detection and mapping of mountain pine beetle red attack

A variety of satellite remotely sensed image data have been used in a research context to successfully detect and map mountain pine beetle red attack, providing varying levels of precision and, in turn, information that can be integrated into the existing hierarchy of survey data. Table 2 provides a summary of some of the remotely sensed data sources currently available. All of the data sources included in Table 2 either have been used or have strong potential for use (based on their spatial and spectral properties) in mapping mountain pine beetle red attack. Figure 1 illustrates trade-offs associated with spatial resolution and data costs. Other factors, such as radiometric and spectral properties of images, and image extent, affect the utility of a remotely sensed data source for any given application, and must be considered before data is selected (Franklin et al. 2002). Figure 2 illustrates the different information content of a medium spatial resolution data source (Landsat) and a high spatial resolution data source (IKONOS). In the Landsat image, the patterns of cutblocks and roads are discernable across the landscape; however, details regarding individual cutblocks or roads are more clearly visible in the IKONOS image. The following section outlines some recent examples where remotely sensed data of varying spatial and spectral resolutions have been used to map mountain pine beetle red attack. First, the attributes of each data source, including cost and availability, are described. Second, the methods used to pre-process the imagery, classify red attack, and assess the accuracy of the final outputs are presented. Finally, the potential and limits of each data source are discussed, and recommendations for the most appropriate use of the data source are provided.

Table 2. Remotely sensed data sources that have potential for mountain pine beetle red-attack mapping

SENSOR	Swath Width (km)	ARCHIVE ¹ Cost/km ² (CAD\$)	ACQUISITION ¹ Cost/km ² (CAD\$)	Revisit Cycle	Spatial Resolution (m)	Spectral Range (nm)
Landsat 5 TM	185	\$0.02	N/A	16 days	30 MS	450-2350
Landsat 7 ETM+	185	\$0.03	N/A	16 days	15 PAN 30 MS	450-2350
SPOT 1-4	60	\$0.43/km ² for 1986-2001 \$0.69/km ² for 2002+ 60 km ² minimum	\$1000/scene plus archive cost/km ² (see left)	26 days (nadir) 1-4 days (oblique)	10 PAN 20 MS	500-1730
SPOT 5	60	\$2.45/km ² for 2.5m \$1.22/km ² for 5m and 10m 20 km ² minimum	\$1000/scene plus archive cost/km ² (see left)	26 days (nadir) 1-4 days (oblique)	2.5, 5 PAN 10 MS	500-1730
IKONOS 2	11	\$9.10/km ² for PAN or MS \$12.74/km ² for bundle 49 km ² minimum	\$23.40/km ² for PAN or MS \$32.76/km ² for bundle 100 km ² minimum	3 days	1 PAN 4 MS	450-850
Quickbird-2	16.5	\$23.40/ km ² for PAN or MS \$31.20/km ² for bundle 25 km ² minimum	\$28.60/ km ² for PAN or MS \$36.40/km ² for bundle 64 km ² minimum	1-3 days	0.61 PAN 2.44 MS	450-900

¹Prices quoted are valid as of November, 2004.

Figure 1. Trade-offs between spatial resolution and data costs per square kilometre

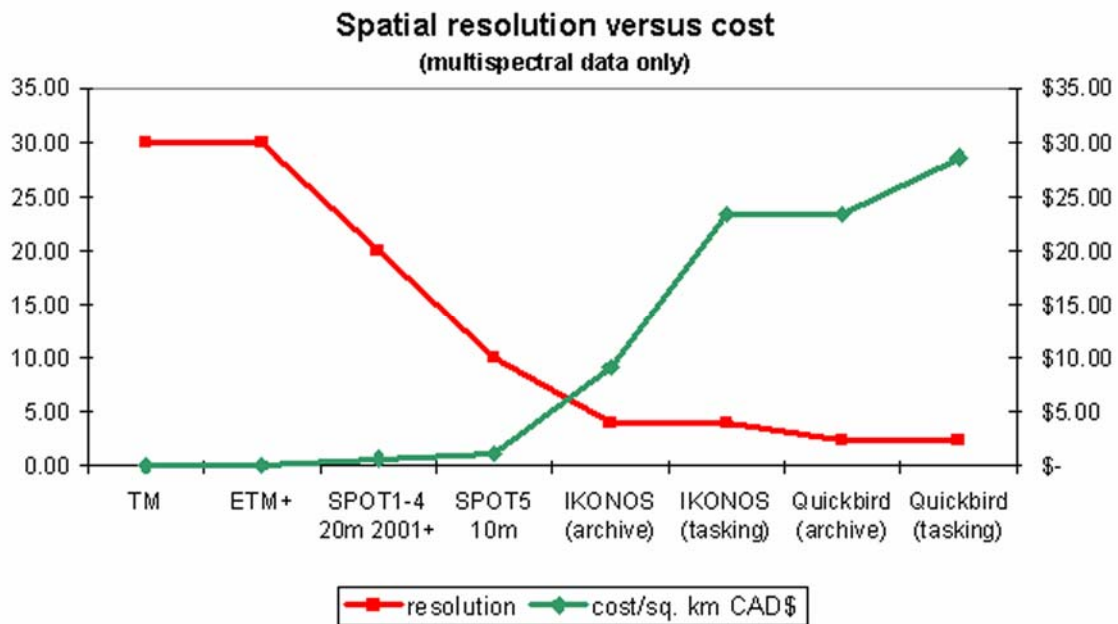
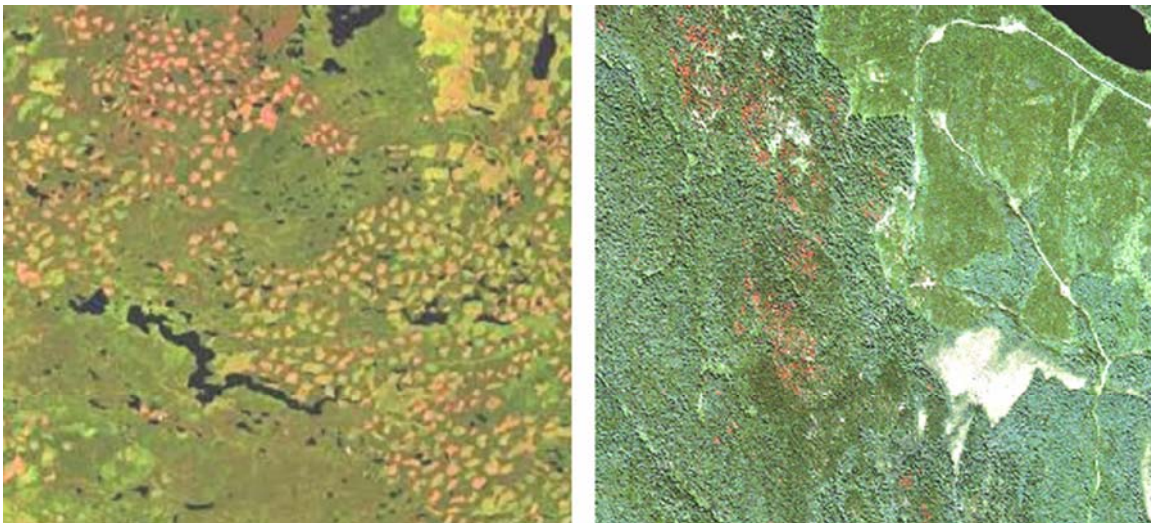


Figure 2. The information content of a medium spatial resolution sensor, Landsat ETM+ (left), compared to the information content of a high spatial resolution sensor, IKONOS (right). The IKONOS image is provided courtesy of Space Imaging Inc. ©2002 Copyright Space Imaging Inc. All rights reserved.



Medium Spatial Resolution Data: Landsat TM and ETM+

Sensor Specifications, Data Cost and Availability

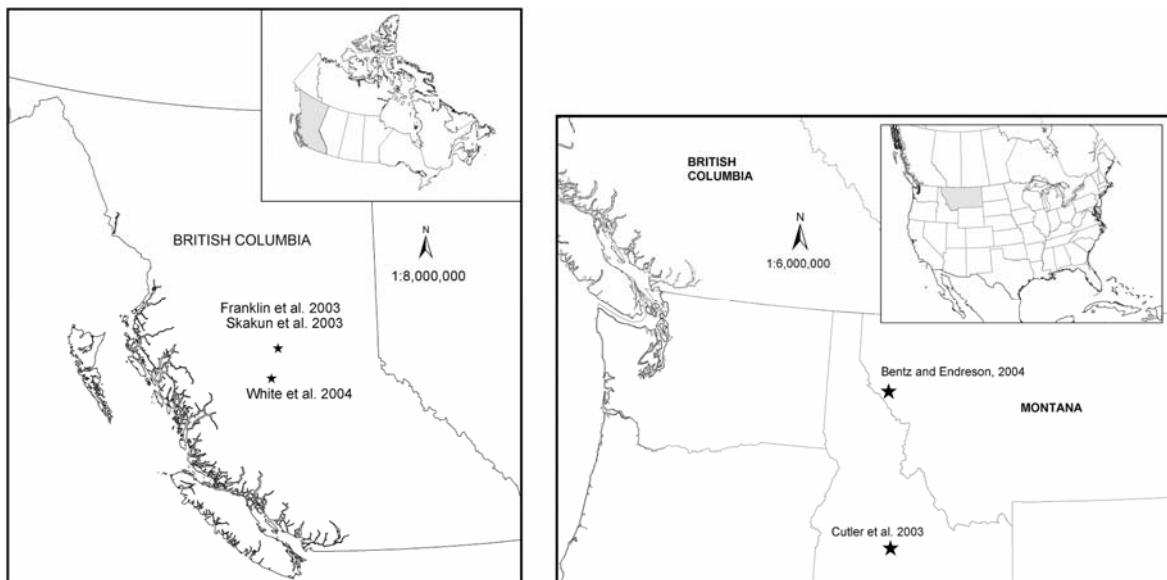
Medium spatial resolution remotely sensed imagery provides an information source that bridges the requirements of strategic- and tactical-level planning. The spatial resolution for multispectral sensors that are currently operational varies from 10 metre (SPOT 5) to 30 metre (Landsat Thematic Mapper (TM) and Enhanced Thematic Mapper (ETM+)) (Table 2). The cost per square kilometre also varies, ranging from \$0.02 for Landsat to \$1.22 for SPOT 5. The Landsat satellite will revisit the same location once every 16 days, while the SPOT 5 satellite will do so every 26 days (for nadir viewing). Due to its low cost, availability, large-area coverage and program longevity, Landsat TM and ETM+ data are the most widely used remotely sensed imagery for terrestrial applications. Unfortunately, recent technical problems with the ETM+ sensor have affected quality of data collected (Cohen and Goward 2004; Maxwell 2004). Mountain pine beetle red attack has been mapped using both single-date and multi-date Landsat imagery.

Application Examples

Single-date Landsat imagery

Franklin et al. (2003) used a 1999 Landsat TM image for the detection and mapping of mountain pine beetle red attack in the Fort St. James Forest District, British Columbia, Canada (Figure 3). A supervised classification methodology was chosen for this site due to the large amount of field data and aerial survey point data (collected by helicopter–GPS survey) available for calibration and validation. The field and aerial survey data, collected in August and September, 1999, identified known locations of red attack. Before classification, the field and aerial survey data were stratified using an existing GIS forest inventory polygon dataset. Strata of forest composition and structure were defined using a number of forest inventory attributes. The strata were designed to fulfill two objectives: first, to improve the confidence associated with the field and aerial survey data; second, to reduce the spectral variability inherent in the natural forest conditions (Franklin et al. 2001). For example, susceptibility to mountain pine beetle is known to increase in stands that are older than 60 years and that have a high pine component (Safranyik et al. 1974). Consequently, red-attack calibration sites located in inventory polygons that have less than 40 % lodgepole pine or are younger than 60 years were not used. Areas of infestations by other pests, which were identified in either the field or aerial survey information, were not used as red-attack training sites. Points identifying grey attack were likewise excluded from the calibration and validation sample. To minimize spectral variance associated with edge effects, training sites located on the edge of cutblocks, roads, rivers, and lakes were removed using an edge filter. In total, 360 of the field and aerial survey points identifying sites of known red-attack locations were selected. Through a similar process of stratification, a non-attacked forest stratum was generated and a set of points, comparable in size to that of the red-attack calibration set, was selected. A total of 100 points from each of the attack and non-attack data sets were reserved for use as an independent validation data set. The remaining points (260 for each of attack and non-attack) formed the calibration data set. These calibration data were used to generate unique spectral signatures for red attack and non-attack, which in turn were used in the classification process.

Figure 3. Location of study sites in British Columbia, Canada, (left) and Montana, USA (right)



Pre-processing of the Landsat TM image included the co-registration of the imagery to the GIS forest inventory data set using 40 ground control points distributed throughout the Landsat scene and a cubic convolution resampling algorithm. A standard model was used for the atmospheric correction to obtain reflectance values (Richter 1990). The signatures generated from the calibration points of red-attack and non-attack forest were used as input training data for a supervised maximum likelihood classification algorithm. The classification was performed using all six of the Landsat TM optical bands, and each pixel in the image was assigned to the class to which it had the highest probability of being a class member (red attack or non-attack).

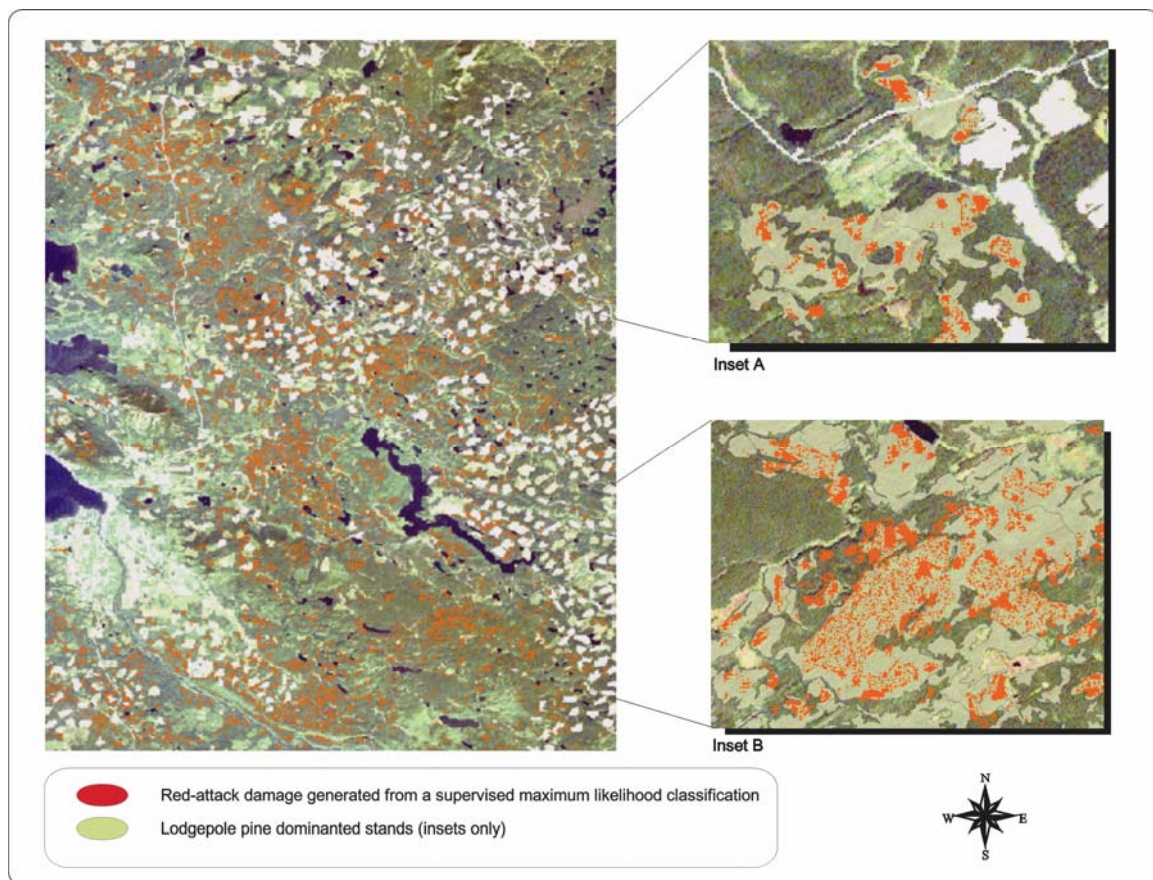
Accuracy of the output classification was assessed using reserved, independent validation points. Accuracy is determined by comparing validation points, which indicate known locations of mountain pine beetle red-attack damage and non-infested areas, to the red-attack map generated from the Landsat data. Assuming these two data sources are appropriately co-located, a tally of correspondence and non-correspondence is made. The proportion of validation points corresponding to the Landsat map (both attacked and non-attacked) is the overall accuracy. Separate accuracies for each class (red attack and non-attack) are also reported. A review of accuracy assessment procedures used with remotely sensed data in a forestry context is provided by Czaplewski (2003).

Franklin et al. (2003) reported an overall classification accuracy of 72.3%; red-attack locations were detected with 73.3% accuracy, whereas accuracy for non-attack locations was 71.1% (Table 3). These results must be considered in the context of the infestation in the study area; stands in the red-attack stage had a heterogeneous spatial distribution, and many infestation patches were small. For example, 82% of the field and aerial survey points had less than 10 trees infested (within a 50 metre radius plot). Stratification of the calibration sites was critical for constraining the spectral variability associated with forest stands, and enhancing the separation between red-attack and non-attack locations. In the case of the healthy forest, calibration and validation data were extracted from the GIS forest inventory: more robust training data for healthy forest obtained by aerial observation or direct field validation, in a manner comparable to that for the red-attack calibration and validation data, may have improved results. The final product was a map showing location and extent of mountain pine beetle red attack in the study area (Figure 4).

Table 3. Accuracy assessment results for a single-date image classification using Landsat Thematic Mapper data (Franklin et. al., 2003). A supervised maximum likelihood classification was used, and the accuracy for both the red-attack class and areas that were not attacked are presented. The overall classification accuracy was 72.3%.

		Validation Data			User's	Commission
		No attack	Red-attack	Total		
Classified Image	No attack	71.1	26.7	98	72.6%	27.4%
	Red-attack	28.9	73.3	102	71.8%	28.2%
	Total	100	100	200		
	Producer's	71.1%	73.3%		Overall Accuracy	
	Omission	28.9%	26.7%			
					72.3%	

Figure 4. Location and extent of mountain pine beetle red attack as identified with single-date Landsat imagery. Figure reproduced with permission, the American Society of Photogrammetry and Remote Sensing, Franklin et al. (2003)



A similar study using single-date Landsat imagery for red-attack mapping was recently completed in the mountainous region of the Lolo National Forest in central Montana, United States (Figure 3; Bentz and Endreson 2004). Although forest species in the area were mixed conifer, field-data collection was restricted to areas dominated by lodgepole pine. Mountain pine beetle infestations began in the area in 1994. Field data was collected in 2000, 2001, and 2002. A total of 380 plots

across 15 different sites were surveyed; each plot was 30m by 30m in size, corresponding to a single Landsat pixel. Data was collected for every tree within each plot; attributes included species, diameter at breast height, and attack code (1: live and not currently infested; 2: current attack; 3: attacked the previous year; 4: attacked two years previous; 5: attacked more than two years previous). The sample size for live and not currently infested stands was increased with air-photo interpretation.

The Landsat ETM+ image used in this study was acquired on August 18, 2002. A dark pixel atmospheric correction was applied to the imagery, which was then calibrated to radiance and converted to reflectance (Chavez 1997). Finally, a Tasseled Cap Transformation was performed to generate three outputs that highlight the brightness, wetness, and greenness information content in the six optical Landsat bands (Crist and Cicone 1984). Using a similar approach to that of Franklin et al. (2003), the forest inventory was used to stratify the calibration and validation data into suitable areas dominated by lodgepole pine that had not been harvested during the past 50 years. A mean reflectance value for each Landsat band was calculated for each plot, along with mean values for each of the Tasseled Cap components. These values were subsequently exported to a database for further statistical analysis and model development.

It was not expected that it would be possible to discriminate between red attack for the current year and red attack from previous years. Therefore, the five attack classes identified in the field data were generalized to three classes: green (not infested and current attack); red (attacked in previous year and previous two years); and grey (attacked more than two years previous). Development of a classification algorithm focussed solely on the identification of red attack. Several classification methods were tested; however, the lowest overall misclassification rate was generated using linear discriminant analysis. Validation data for the red-attack locations were stratified for three levels of red-attack intensity: plots with 0 to 9 red-attack trees, 10 to 24 red-attack trees, and more than 25 red-attack trees. Using the classification approach described above, the overall accuracy for red attack was 59%; however, accuracy for plots with greater than 25 red-attack trees was 79%.

Multi-date Landsat imagery

Skakun et al. (2003) used multi-temporal Landsat 7 ETM+ imagery from the years 1999, 2000, and 2001 to identify locations of mountain pine beetle red attack in a study area near Prince George, British Columbia, Canada (Figure 3). Known locations of red attack were collected by a helicopter-GPS survey in July 2001. Previous studies have suggested that change over time, as measured with the Tasseled Cap Transformation, may be useful for mapping insect disturbance (Cohen et al. 1995; Price and Jakubauskas 1998; Franklin et al. 2001; Sharma and Murtha 2001). The image data were geometrically and atmospherically corrected, and the Tasseled Cap Transformation was used to generate brightness, greenness, and wetness components (Crist and Cicone 1984). Stand stratification was used in a manner similar to Franklin et al. (2003), in order to reduce variability in the calibration and validation data. In total, 120 samples per class were selected, with half of the samples being retained for independent validation. The target categories for the classification included non-attacked forest, forest stands with 10 to 29 red-attack trees, and forest stands with 30 to 50 red-attack trees.

Analysis was completed using image pairs: 1999 and 2001, and 2000 and 2001. The wetness components generated for each image date were then differenced for each image pair. The wetness difference output was then enhanced and thresholded, creating an Enhanced Wetness Difference Index (EWDI) image for the 1999/2001 image pair, and for the 2000/2001 image pair. The threshold value corresponding to red attack was selected through an iterative process; the range of EWDI values were correlated to calibration data of known red-attack tree locations. Discriminant functions were then applied to the EWDI images in order to classify each pixel in the image to one of the three aforementioned classes. Classification was completed for the 1999/2001 and 2000/2001 EWDI images. Each classification output contained three classes: non-attacked forest, forest stands with 10 to 29 red-attack trees, and forest stands with 30 to 50

red-attack trees. The outputs were evaluated using the retained independent validation data, with the overall classification accuracy for the two output maps equalling 74% (Table 4). It is noteworthy that for both classifications, stands with 30 to 50 red-attack trees had higher accuracies than stands with only 10-29 red-attack trees. This indicates that larger numbers of red-attack trees per site will generate a stronger pattern of red-attack reflectance.

Table 4. Accuracy assessment results for a multi-date image date classification using Landsat ETM+ data (Skakun et. al. 2003). Discriminant analysis was used to classify the (A) 2000/2001 EWDI image and the (B) 1999/2001 EWDI image. A stratified random samples of non-attacked forest (n = 60) and different levels of red-attack damage (n = 60 for each level) were input into the model. The overall classification accuracy for both classification outputs was 74%.

A. 2000/2001 EWDI

		Validation Data				User's	Commission
		1	2	3	Total		
Classified Image	1	48	11	8	67	72%	28%
	2	8	40	7	55	73%	27%
	3	4	9	45	58	78%	22%
	Total	60	60	60	180		
	Producer's	80%	67%	75%		Overall Accuracy = 74%	
	Omission	20%	33%	25%			

1 = Non-attacked forest

2 = Group of 10-29 red-attack trees

3 = Group of 30-50 red-attack trees

B. 1999/2001 EWDI

		Validation Data				User's	Commission
		1	2	3	Total		
Classified Image	1	46	14	8	68	68%	32%
	2	8	41	5	54	76%	24%
	3	6	5	47	58	81%	19%
	Total	60	60	60	180		
	Producer's	77%	68%	78%		Overall Accuracy = 74%	
	Omission	23%	32%	22%			

1 = Non-attacked forest

2 = Group of 10-29 red-attack trees

3 = Group of 30-50 red-attack trees

Potential and Limitations

These examples illustrate that both single-date and multi-date Landsat imagery may be used to map red-attack damage, with overall accuracies ranging from 59% to 81%. When considered in the context of red-attack magnitude, accuracies for stands with greater numbers of red-attack trees ranged from 73% to 81%; these results emphasize the suitability of these medium spatial resolution data sources to areas with larger, more widespread infestations. The output maps generated from these image classifications provide an efficient and accurate representation of the distribution of red-attack damage across the landscape. This digital output may be easily integrated into an existing GIS-based forest inventory systems (Wulder et al. 2005).

Once integrated into the forest inventory using polygon decomposition, the red-attack information could be used by forest managers: to prioritize areas for more detailed survey; to facilitate comparison of similar products produced over several years; and as a means to assess mountain pine beetle population and tree damage trends (both spatial and temporal) over the landscape. Landsat data is cost effective (\$0.02 to \$0.03 per square kilometre for data collection; costs for processing and analysis will vary, but should also be considered); however, in some areas it may be difficult to acquire cloud-free imagery for the desired time frame, as the sensor passes over any given area only twice per month. Multi-date techniques, which capitalize on the dramatic change in reflectance exhibited by red-attack damage, show promise for achieving greater accuracy than methods using single-date imagery. An extensive archive of Landsat imagery data is available to facilitate this type of analysis, and for longer-term retrospective type analyses.

In areas with outbreak levels of infestation, Landsat data could provide a more specific and precise estimate of red-attack damage, compared to the broader information and spatial resolution of the aerial overview survey. The utility of the Landsat data, however, would be in a retrospective analysis, as analysis of the Landsat imagery could not be completed within temporal and fiscal constraints, which are currently only met by the aerial overview sketch mapping. The results of the examples presented above, and of other studies that have been completed, indicate that Landsat data and other sensors with comparable spatial and spectral resolutions are best suited to strategic (and perhaps some tactical) information requirements. Generally, the identification of red attack with Landsat imagery is somewhat dependent on the size and nature of the infestation. This data source tends to be most successful in areas where the infestation is large and growing (i.e., epidemic), and somewhat less effective when the infestation is small and dispersed across the landscape (i.e., endemic).

High Spatial Resolution Data: IKONOS

Sensor Specifications, Data Cost and Availability

The availability of commercially delivered, high spatial resolution satellite data offers a potential source for the cost-effective collection of accurate, consistent, and timely data regarding mountain pine beetle red attack. The resolution for high spatial resolution sensors currently operational ranges from 0.67-metre (panchromatic) and 2.44-metre (multispectral) for QuickBird to 1-metre (panchromatic) and 4-metre (multispectral) for IKONOS. The spectral properties of the QuickBird and IKONOS sensors are provided in Table 5. The average bandwidth of the multispectral bands on these sensors is approximately 80 nm. In contrast, the panchromatic bands have a bandwidth of 403 nm. The large bandwidth of the panchromatic channel results in lower spectral sensitivity. The implications of this are that this band has limited utility for detecting mountain pine beetle red attack, although fusion of this band with the multispectral bands could be useful for visualization of red-attack areas.

Table 5. Spectral properties of IKONOS and QuickBird sensors

SENSOR	QUICKBIRD	IKONOS
	PANCHROMATIC	
Spectral Bands (nm)	445-900	526-929
Spatial Resolution	61 cm (at nadir)	1 m (at nadir)
	MULTISPECTRAL	
Blue	450-520	445-516
Green	520-600	506-595
Red	630-690	632-698
Near Infra Red	760-900	757-853
Spatial Resolution	2.44 m (at nadir)	4 m (at nadir)

To purchase archived imagery with both the panchromatic and multispectral bands together as a bundle, the cost for IKONOS is approximately \$12.74/km², and for the QuickBird is \$31.20/km². These costs are more comparable than they initially seem, as the minimum order size for IKONOS is 49 km² (\$625 for minimum order) and for QuickBird is 25 km² (\$780 for minimum order). The advantage of these two sensors is the ability to collect data over a specific area of interest and within a specified date range; the disadvantage is that unlike Landsat, these sensors are not continuously collecting data over the entire earth's surface. Costs for acquiring new imagery or for purchasing archive imagery are provided in Table 2. Although QuickBird has a higher spatial resolution, the smaller minimum order area required makes this data source less expensive than IKONOS for study areas less than 64 km². Prices and minimum order sizes change regularly, and end-users are advised to fully evaluate these factors before purchasing. High spatial resolution remotely sensed data provides a promising option for the detection of red attack at both local and landscape scales. The imagery has a high level of spatial detail, and a large image extent (IKONOS and QuickBird images have spatial extents of 121 and 272.25 km² respectively). IKONOS 4-metre multispectral data has been used to map red attack in areas of low to moderate infestation levels (Bentz and Endreson 2004; Cutler et al. 2003; White et al. 2004).

Application Examples

An investigation into the merits of using IKONOS 4-metre multispectral data was recently completed at a study site near Prince George, British Columbia, Canada (Figure 3). IKONOS provides global coverage, a consistent acquisition schedule, and near-nadir viewing angles. The spatial resolution of the sensor is suitable for high-accuracy photogrammetric processing and mapping applications (Tao et al. 2004). In addition, the IKONOS 4-metre multispectral bands have spectral properties in the visible and near-infrared wavelengths similar to those of Landsat ETM+ multispectral data (Goward et al. 2003). This project examined the use of an unsupervised clustering of image-spectral values to detect mountain pine beetle red attack at susceptible sites (i.e., with known risk factors for infestation), which were considered to be lightly infested (1% to 5% red-attack trees) or moderately infested (greater than 5% and less than 20% red-attack trees).

A mask was generated from the IKONOS image to exclude potential areas of confusion from the classification process (e.g., large water bodies, cutblocks). An unsupervised classification (ISODATA), which included all four IKONOS spectral bands, was used to identify red-attack trees. The unsupervised approach was used to diminish the requirement for training data (Franklin et al. 2003). Independent calibration and validation data were collected from 1:30,000-scale aerial photography. The calibration data was used to verify the correspondence of spectral clusters to known red-attack locations, and the validation data was used to assess the accuracy of the resulting red-attack map. The independent calibration data consisted of four 1-ha sites where red-attack trees were delineated and detailed stem maps were created. Three of the calibration sites were medium attack and one was low attack. The calibration data had 274 red-attack trees. The validation data included nine sites for the low-damage class (127 red-attack trees) and 10 sites for the medium-damage class (510 trees).

A four-metre buffer (analogous to a single IKONOS pixel) was applied to the red-attack pixel identified on the IKONOS imagery in order to account for positional error. When compared to the independent validation data collected from the aerial photography, it was found that 70.1% (lightly infested sites) and 92.5% (moderately infested sites) of the red-attack trees existing on the ground were correctly identified through the classification of the remotely sensed IKONOS imagery. Analysis of red-attack trees missed in the classification of the IKONOS imagery indicated that detection of red attack was not effective for smaller tree crowns (diameter < 1.5 metres), which were more than 11 metres from other red-attack trees.

Another application example using 4-metre multispectral IKONOS data for mapping red-attack damage was recently completed in an area dominated by lodgepole pine in the Sawtooth

National Recreation Area in central Idaho, United States (Figure 3; Cutler et al. 2003). Mountain pine beetle populations started building in the northern section of the study area in 1997, and, by 2002, were at outbreak levels throughout the study area. The IKONOS imagery was purchased orthorectified with an 8-bit radiometric resolution. Additional GIS layers and field points were co-registered to the imagery. The field data, collected in 2002, identified the location of individual trees with a GPS and assigned the trees an attack code: 1, live and not currently infested; 2, current attack; 3, attacked the previous year; 4, attacked two years previous; 5, attacked more than two years previous. Samples were also collected from five other land cover classes in the area (water, roads, dirt, agriculture, and sagebrush). In total, there were 699 observations for the 10 different target classes. A discriminant function, which included the four multispectral bands of the IKONOS, was calibrated and used to classify each pixel in the image into one of the 10 target classes. Validation data were used to assess the accuracy of the classification; 95% of the red-attack trees identified from the classification of the IKONOS image were verified as being red attack from the validation data. Measures of commission error were not reported for this study.

Potential and Limitations

At the local level in British Columbia, management of the mountain pine beetle has shifted to the detection and mitigation of sites with minimal levels of infestation, in order to reduce or contain the outbreak to a size and distribution that can be handled within the capacity of existing forestry infrastructure. There is operational need for an efficient and cost-effective method to identify red-attack trees in areas with low levels of infestation. Errors of commission must be minimized; from an operational perspective, deployment of field crews to sites falsely identified as red attack has greater consequence than has deployment of crews to sites where red-attack trees are located, but where every red-attack tree may not be identified. The use of imagery for this scale of red-attack mapping provides a permanent record of the survey, which subsequently can be used by field crews who need to assess not only the exact location of red attack, but also the extent and shape of red-attack stands and their relative position in the landscape.

With high spatial resolution data, the greatest challenge for model development lies in correlating the spatial location of measured ground data points to the corresponding pixel in the image. GPS systems will have an error associated with the position information, and the rectified imagery will likewise have an associated error. Similarly, the high spatial resolution of IKONOS and QuickBird imagery magnifies positional errors that exist in much of the standard topographic base information—most of which is collected at scales of 1:20,000 or 1:50,000 (this base information is frequently used to geocorrect or orthorectify imagery). Overall, the results of examples presented here indicate that IKONOS is well suited to detection of small groups of red-attack trees, whereas detection of individual red-attack trees is more problematic due to errors discussed above. In addition, very little pre-processing of the image data used in these examples was required to successfully identify red-attack trees. Both QuickBird and IKONOS have rapid revisit rates, returning to the same location every 1 to 3 days. The trade-off for this rapid revisit rate is that the imagery is not always collected at nadir, and detection and mapping algorithms can be sensitive to off-nadir view angles. Users can specify the viewing geometry they require when ordering either QuickBird or IKONOS imagery. High spatial resolution imagery is well suited to the information requirements at the tactical or operational level; however, it is more expensive to acquire than medium spatial resolution imagery. When warranted by high-value stands, high spatial resolution imagery can provide spatially explicit data on both red-attack and live trees for input into models that describe the evolution of spatial and temporal patterns of mountain pine beetle attack. Once integrated into the forest inventory using polygon decomposition, the red-attack information can be used by forest managers to identify stands for direct control and to plan salvage logging activities.

Integration of remotely sensing/GIS technology

Methods

Remotely sensed data can be used to generate maps that depict spatial location and extent of mountain pine beetle red attack. This information is of greatest value to forest managers when it is effortlessly integrated directly into a pre-existing forest inventory. Polygon decomposition is an analysis technique that facilitates this integration (Wulder and Franklin 2001), providing a link between outputs from remotely sensed image classification and the stand records (polygons) in the inventory. For example, the EWDI output described earlier can be linked to the inventory to provide information on the total red-attack area of a stand, and the location of red attack within the stand (Wulder et al. 2005). Polygon decomposition is well suited to a hierarchy of data sources: estimates of red attack from many different data sources, such as aerial overview survey, helicopter–GPS survey, and high spatial resolution remotely sensed data can be integrated at the stand level. This provides a common unit to compare magnitude and extent of red attack estimated by each of these sources, provides valuable inputs for modellers, and illustrates the importance of matching the data source to the management objective. For instance, polygon decomposition allows attributes of attacked stands to be analyzed quickly, and may provide the manager with some context for the biological or economic impact of the infestation (Table 6).

Table 6. Polygon decomposition results for aerial overview sketch map, helicopter GPS survey points, and Landsat EWDI

FOREST INVENTORY DATA			
	Sketch Map	Helicopter GPS Survey Points	Landsat EWDI
Number of polygons with red-attack	648	783	857
Total area of polygons with red-attack (ha)	11,461.3	24,554.3	28,782.6
AERIAL OVERVIEW SKETCH MAP			
Area of aerial sketch map = 6,256.1 ha			
HELICOPTER GPS SURVEY POINTS			
Count of aerial survey points = 2,128			
Number of trees = 17,430			
LANDSAT EWDI			
Area of EWDI pixels = 4,961.79 ha			

Summary and Conclusions

Maps of location and extent of mountain pine beetle infestations drive mitigation and prediction activities. For example, the placement of field crews relies on accurate detection of insect activities over large areas. Similarly, output from decision support models are improved through inclusion of accurate maps of attack conditions. All levels of planning require information on location and extent of mountain pine beetle red-attack damage. This information is also used to parameterize models and validate assumptions used to generate the models. The integration of red-attack information with existing forest inventories in a GIS environment generates value-added information for forest managers. In turn, the forest inventory provides a context for, and source of, validation data for information extracted from the remotely sensed data (Wulder and Franklin 2001; Wulder et al. 2005). The augmentation of forest inventory data provides enhanced baseline data for models that predict the extent and impacts of future mountain pine beetle infestations. Satellite-based remotely sensed data can provide information that complements existing data sources, and can be integrated into the existing hierarchy of available survey data.

The objective of this paper is to provide practical guidelines to potential users of satellite-based remotely sensed imagery, who are interested in identifying the location and extent of mountain pine beetle red-attack damage. Examples, using both medium and high spatial resolution satellite remotely sensed imagery, were presented, along with methods for pre-processing, classification, and validation. The use of aerial overview sketch mapping (or relatively inexpensive, low spatial resolution satellite based remotely sensed data) to provide a synoptic view of mountain pine beetle red-attack damage at the landscape level and then subsequently to guide the acquisition of more-costly higher spatial resolution data is one example of how a data hierarchy can be a cost-effective, efficient tool. The importance of matching information requirements to appropriate data source is emphasized as a means to reduce the overhead associated with data collection and processing.

The nature of the infestation (i.e., endemic, incipient, epidemic) should guide the selection of appropriate data source. Medium spatial resolution data, such as Landsat TM and ETM+, are better suited to mapping epidemic and outbreak levels of infestation. High spatial resolution data, such as IKONOS and QuickBird, are suitable for identifying small clusters of red-attack trees; however, the consistent detection of individual red-attack trees remains challenging. The relative costs, availability, and processing requirements of the various data sources are important considerations for the end user. In contrast to conventional survey methods, the costs of remotely sensed options (beyond the cost of imagery) are not well documented; costs associated with processing the imagery are variable, and must be acknowledged when choosing survey options.

The concept of an information requirements hierarchy was introduced to demonstrate how different levels of forest inventory, planning, and modeling have different requirements in terms of timeliness and precision of mountain pine beetle red-attack estimates. This hierarchy of information requirements is matched by a hierarchy of different data sources, and each data source provides a different level of detail on location and extent of mountain pine beetle red-attack damage. Research has demonstrated that remotely sensed data (with varying spatial resolutions) can be used to successfully detect and map red attack; as a result, it should be considered part of this data hierarchy. An understanding of the information content of a range of data sources results in the ability to judiciously select the most appropriate data source to populate the information hierarchy.

Matching the appropriate data source to the information requirement reduces the complexity of data collection and processing, and ensures that the required level of detail is provided to address the management objectives specific to that level of the hierarchy. Furthermore, a data hierarchy is cost effective; relatively inexpensive low spatial resolution data sources may be used to guide the acquisition of more costly higher spatial resolution data. Satellite remotely sensed data cannot supplant existing methods of red-attack detection; however, it does provide information that can augment and complement conventional methods by filling spatial or temporal gaps in other data sources.

Acknowledgements

This work was funded by the Natural Sciences and Engineering Research Council of Canada and by Natural Resources Canada through the Mountain Pine Beetle Initiative, a six-year, \$40-million program administered by Natural Resources Canada, Canadian Forest Service. Additional information on the Mountain Pine Beetle Initiative may be found at: <http://mpb.cfs.nrcan.gc.ca>. Publication does not necessarily signify that the contents of this report reflect the views or policies of Natural Resources Canada, Canadian Forest Service.

Data collection and analysis on the Lolo National Forest was funded in part by the USDA Forest Service, Forest Health Protection, Special Technology Development Program. Funding from the United States National Science Foundation was used to facilitate research on high spatial resolution imagery in the Sawtooth National Recreation Area, Idaho.

References

- Biesinger, Z.; Powell, J.; Bentz, B.J.; Logan, J.A. 2000. Direct and indirect parameterization of a localized model for the mountain pine beetle–lodgepole pine system. *Ecological Modeling* 129:273–296.
- Bentz, B.J.; Logan, J.A.; Amman, G.D. 1991. Temperature dependent development of the mountain pine beetle (Coleoptera: Scolytidae), and simulation of its phenology. *Canadian Entomologist* 123:1083–1094.
- Bentz, B.J.; Amman, G.D.; Logan, J.A. 1993. A critical assessment of risk classification systems for the mountain pine beetle. *Forest Ecology and Management* 61:349–366.
- Bentz, B.J.; Endreson, D. 2004. Evaluating satellite imagery for estimating mountain pine beetle caused lodgepole pine mortality: current status. Pages 152–161 in Shore, T.L.; Brooks, J.E.; Stone, J.E. (eds.), *Mountain Pine Beetle Symposium: Challenges and Solutions*, October 30–31, 2003, Kelowna, British Columbia. Natural Resources Canada, Canadian Forest Service, Pacific Forestry Centre, Information Report BC-X-399. 296 pp.
- British Columbia Ministry of Forests. 1995. Bark beetle management guidebook (Forest Practices Code). Forest Practices Branch, Victoria, British Columbia.
- British Columbia Ministry of Forests. 2000. Forest health aerial overview survey standards for British Columbia, Version 2.0. Forest Practices Branch, and Canadian Forest Service. Victoria, British Columbia.
- British Columbia Ministry of Forests. 2003a. Provincial bark beetle management technical implementation guidelines; Forest Practices Branch, Victoria, British Columbia.
- British Columbia Ministry of Forests. 2003b. Timber supply and the mountain pine beetle infestation in British Columbia, Forest Analysis Branch, Victoria, British Columbia.
- British Columbia Ministry of Forests. 2004. Expedited timber supply review for the Lakes, Prince George and Quesnel timber supply areas. Public Discussion Paper. Forest Analysis Branch, Victoria, British Columbia.
- Carroll, A.L.; Safranyik, L. 2004. The bionomics of the mountain pine beetle in lodgepole pine forests: establishing a context. Pages 21–32 in Shore, T.L.; Brooks, J.E.; Stone, J.E. (eds.), *Mountain Pine Beetle Symposium: Challenges and Solutions*, October 30–31, 2003, Kelowna, British Columbia. Natural Resources Canada, Canadian Forest Service, Pacific Forestry Centre, Information Report BC-X-399. 296 pp.
- Carroll, A.; Taylor, S.; Régnière, J.; Safranyik, L. 2004. Effects of climate change on range expansion by the mountain pine beetle in British Columbia. Pages 221–230 in Shore, T.L.; Brooks, J.E.; Stone, J.E. (eds.), *Mountain Pine Beetle Symposium: Challenges and Solutions*, October 30–31, 2003, Kelowna, British Columbia. Natural Resources Canada, Canadian Forest Service, Pacific Forestry Centre, Information Report BC-X-399. 296 pp.
- Chavez, P.S. 1997. Image based atmospheric corrections – revisited and improved. *Photogrammetric Engineering and Remote Sensing* 62(9):1025–1036.
- Cohen, W. B.; Spies, T.A.; Fiorella, M. 1995. Estimating the age and structure of forests in a multi-ownership landscape of western Oregon, U.S.A., *International Journal of Remote Sensing*, 16:721–746.
- Cohen, W.; Goward, S. 2004. Landsat's role in ecological applications of remote sensing. *BioScience* 54(6):535–545.
- Cole, W.E.; Amman, G.D.; Jensen, C.E. 1976. Mathematical models for the mountain pine beetle–lodgepole pine interaction. *Environmental Entomologist*, 5:11–16.
- Crist, E.P.; Ciccone, R.C. 1984. A physically-based transformation of thematic mapper data: the TM Tasseled Cap. *IEEE Transactions on Geoscience and Remote Sensing*, GE-22: 256–263.
- Cutler, R.; Brown, L.; Powell, J.; Bentz, B.J.; Cutler, A. 2003. Identifying "Redtops": Classification

- of Satellite Imagery for Tracking Mountain Pine Beetle Progression through a Pine Forest. Proceedings of the 35th Symposium on the Interface, March 13–17, Salt Lake City, Utah. CD-ROM.
- Czaplewski, R.L. 2003. Statistical design and methodological considerations for the accuracy assessment of maps of forest condition. Pages 115–141 in Wulder, M.A.; Franklin, S.E. (eds) Remote sensing of forest environments: Concepts and case studies. Kluwer Academic Publishers, Boston MA.
- Eng, M.; Fal, A.I.; Hughes, J.; Shore, T.; Riel, W.G.; Hall, P. 2004. Provincial level projection of the current mountain pine beetle outbreak: An overview of the model (BCMPB) and draft results of year 1 of the project. British Columbia Ministry of Forests, Victoria, British Columbia. Mountain Pine Beetle Initiative Working Paper 2004-1.
- Franklin, S.E.; Lavigne, M.B.; Moskal, L.M.; Wulder, M.A.; McCaffrey, T.M. 2001. Interpretation of forest harvest conditions in New Brunswick using Landsat TM enhanced wetness difference imagery (EWDI). *Canadian Journal of Remote Sensing* 27(2):118–128.
- Franklin, S.E.; Lavigne, M.B.; Wulder, M.A.; Stenhouse, G.B. 2002. Change detection and landscape structure mapping using remote sensing. *Forestry Chronicle* 78(5):618–625.
- Franklin, S.; Wulder, M.; Skakun, R.; Carroll, A. 2003. Mountain pine beetle red-attack damage classification using stratified Landsat TM data in British Columbia, Canada. *Photogrammetric Engineering and Remote Sensing* 69:283–288.
- Geographic Data BC. 2004. Specifications for aerial photography, March 2005 Edition. Base Mapping and Geomatics Services Branch, Ministry of Sustainable Resource Management, Victoria, BC. 21 pp.
- Goward, S.N.; Davis, P.E.; Fleming, D.; Miller, L.; Townshend, J.R. 2003. Empirical comparison of Landsat 7 and IKONOS multispectral measurements for selected Earth Observation System (EOS) validation sites. *Remote Sensing of Environment* 88:80–99.
- Harris, J.L. 2004. Forest Insect and Disease Conditions in the Rocky Mountain Region, 2003. USDA For. Serv., Rocky Mountain Region, Renewable Resources. R2-04-03. 33 pp.
- Heavilin, J.; Powell, J.A.; Logan J.A. In press. Development and parametrization of a model for bark beetle disturbance in a lodgepole forest. In K. Miyanishi and E. Johnson (eds), *Plant Disturbance Ecology*, Academic Press, NY.
- Logan, J. A. ; Powell, J.A. 2004. Modeling mountain pine beetle phenological response to temperature. Pages 208–220 in Shore, T.L.; Brooks, J.E.; Stone, J.E. (eds.), *Mountain Pine Beetle Symposium: Challenges and Solutions*, October 30-31, 2003, Kelowna, British Columbia. Natural Resources Canada, Canadian Forest Service, Pacific Forestry Centre, Information Report BC-X-399. 296 pp.
- Logan, J.A.; Bentz, B.J. 1999. Model analysis of mountain pine beetle (Coleoptera: Scolytidae) seasonality. *Environmental Entomology* 28(6):924–934.
- Maxwell, S. 2004. Filling Landsat ETM+ SLC-off gaps using a segmentation model approach. *Photogrammetric Engineering and Remote Sensing* 70(10):1109–1111.
- Nelson, T.; Boots, B.; Wulder, M.A. 2004. Spatial-temporal analysis of mountain pine beetle infestations to characterize pattern, risk, and spread at the landscape level. Pages 164–173 in Shore, T.L.; Brooks, J.E.; Stone, J.E. (eds.), *Mountain Pine Beetle Symposium: Challenges and Solutions*, October 30-31, 2003, Kelowna, British Columbia. Natural Resources Canada, Canadian Forest Service, Pacific Forestry Centre, Information Report BC-X-399. 296 pp.
- Powell, J.; Kennedy, B.; White, P.; Bentz, B.; Logan, J.; Roberts, D.. 2000. Mathematical elements of attack risk analysis for mountain pine beetles. *Journal of Theoretical Biology* 204:601-620.
- Price, K.P.; Jakubauskas, M.E., 1998. Spectral retrogression and insect damage in lodgepole pine successional forests. *International Journal of Remote Sensing* 19:1627–1631.

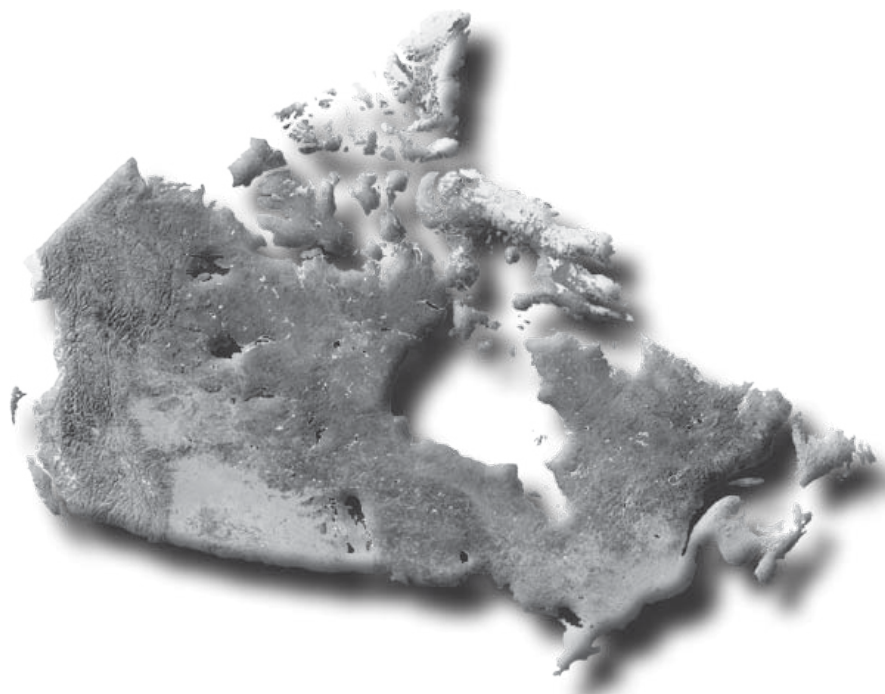
- Richter, R. 1990. A fast atmospheric correction algorithm applied to Landsat TM images, *International Journal of Remote Sensing*, 11:159–166.
- Riel, W.G.; Fall, A.; Shore, T.L.; Safranyik, L. 2004. A spatio-temporal simulation of mountain pine beetle impacts on the landscape. Pages 104–111 in Shore, T.L.; Brooks, J.E.; Stone, J.E. (eds.), *Mountain Pine Beetle Symposium: Challenges and Solutions*, October 30–31, 2003, Kelowna, British Columbia. Natural Resources Canada, Canadian Forest Service, Pacific Forestry Centre, Information Report BC-X-399. 296 pp.
- Safranyik, L.; Shrimpton, D.M.; Whitney, H.S. 1974. Management of lodgepole pine to reduce losses from the mountain pine beetle. Forestry Technical Report 1, Natural Resources Canada, Canadian Forest Service, Pacific Forestry Centre, Victoria, British Columbia. 23 pp.
- Safranyik, L.; Shrimpton, D.M.; Whitney, H.S. 1975. An interpretation of the interaction between lodgepole pine, the mountain pine beetle and its associated blue stain fungi. Pages 406–428 in Baumgartner, D.M. (ed.), *Management of Lodgepole Pine Ecosystems Symposium Proceedings*, Washington State University, Pullman, Washington.
- Schraeder-Patton, C. 2003. Digital Aerial Sketchmapping: Interim project report. USDA Forest Service, Remote Sensing Applications Centre, Fort Collins, CO. Report No. RSAC-1202-RPT2. 14 pp.
- Sharma, R.; Murtha, P.A. 2001. Application of Landsat TM Tasseled Cap Transformations in detection of mountain pine beetle infestations. Final proceedings: 23rd Canadian Symposium of Remote Sensing, August 2001, Quebec City, Canada.
- Shore, T.; Safranyik, L. 1992. Susceptibility and risk rating systems for the mountain pine beetle in lodgepole pine stands. Forestry Canada, Pacific and Yukon Region, Pacific Forestry Centre, Information Report BC-X-336. 12 pp.
- Shore, T., Safranyik, L.; Lemieux, J. 2000. Susceptibility of lodgepole pine stands to the mountain pine beetle: testing of a rating system. *Canadian Journal of Forest Research* 30:44–49.
- Skakun, R.S.; Wulder, M.A.; Franklin, S.E. 2003. Sensitivity of the Thematic Mapper Enhanced Wetness Difference Index (EWDI) to detect mountain pine needle red-attack damage. *Remote Sensing of Environment* 86:433–443.
- Tao, C.V.; Hu, Y.; Jiang, W. (2004). Photogrammetric exploitation of IKONOS imagery for mapping applications. *International Journal of Remote Sensing* 25:2833–2853.
- White, J.C.; Wulder, M.A.; Brooks, D.; Reich, R.; Wheate, R.D. 2004. Mapping mountain pine beetle infestation with high spatial resolution satellite imagery. *Forestry Chronicle* 80(6):743–745.
- Wiat, R.J. 2003. Detecting and mapping mountain pine beetle infestations: Defining the role of remote sensing and establishing research priorities. Workshop Summary Report, June 26–27, 2003. Vancouver, British Columbia. 23 pp.
- Wulder, M.A.; Franklin, S.E. 2001. Polygon decomposition with remotely sensed data: Rationale, methods, and applications. *GEOMATICA* 55(1):11–21.
- Wulder, M.A.; Dymond, C.C.; Erickson, B. 2004. Detection and monitoring of the mountain pine beetle. Canadian Forest Service, Pacific Forestry Centre, Victoria, British Columbia, Information Report BC-X-398. 24 pp.
- Wulder, M.A.; Skakun, R.S.; Franklin, S.E.; White, J.C. 2005. Enhancing forest inventories with mountain pine beetle infestation information. *Forestry Chronicle* 81(1):149–159.

This publication is funded by the Government of Canada through the Mountain Pine Beetle Initiative, a program administered by Natural Resources Canada, Canadian Forest Service (web site: mpb.cfs.nrcan.gc.ca).

Contact:

For more information on the Canadian Forest Service, visit our web site at:
www.nrcan.gc.ca/cfs-scf

or contact the Pacific Forestry Centre
506 West Burnside Road
Victoria, BC V8Z 1M5
Tel: (250) 363-0600 Fax: (250) 363-0775
www.pfc.cfs.nrcan.gc.ca



**To order publications on-line, visit the Canadian Forest Service Bookstore at:
bookstore.cfs.nrcan.gc.ca**