

FIDS Report 87-9

# MAPS OF MAJOR FOREST INSECT INFESTATIONS CARIBOO FOREST REGION 1913-1986

R.J. Andrews



## Forest Insect and Disease Survey

Canadian Forestry Service

Pacific Forestry Centre



Government  
of Canada

Gouvernement  
du Canada

Canadian  
Forestry  
Service

Service  
canadien des  
forêts

FIDS Report 87-9

**MAPS OF MAJOR FOREST  
INSECT INFESTATIONS  
CARIBOO FOREST REGION  
1913-1986**

R.J. Andrews  
Forest Insect and Disease Survey

Canadian Forestry Service  
Pacific Forestry Centre  
506 West Burnside Road  
Victoria, B.C. V8Z 1M5

1987



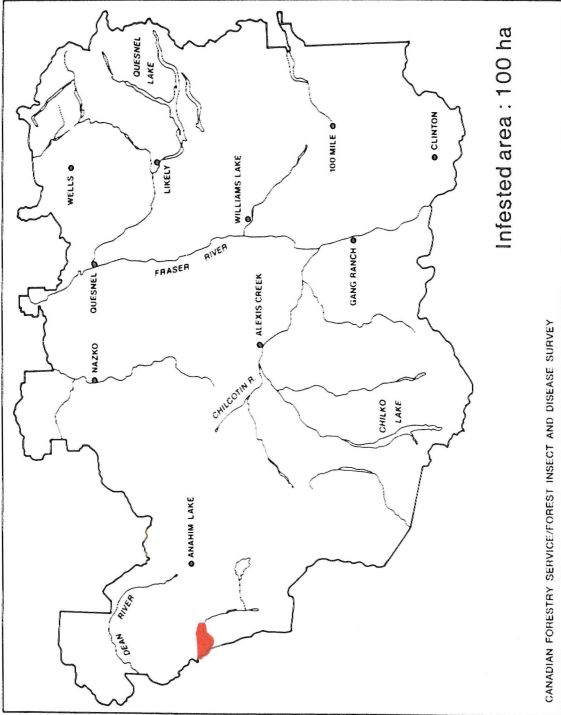
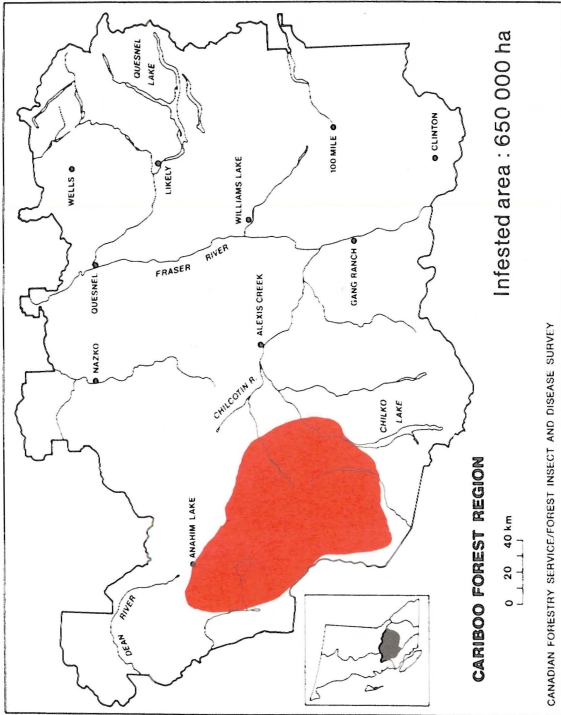
## Table of Contents

	Page
INTRODUCTION .....	5
PINE PESTS .....	7
Mountain pine beetle, <i>Dendroctonus ponderosae</i> , 1930-1986 .....	7
DOUGLAS-FIR PESTS .....	15
Douglas-fir beetle, <i>Dendroctonus pseudotsugae</i> , 1946-1986 .....	15
Western spruce budworm, <i>Choristoneura occidentalis</i> , 1972-1986 .....	24
Douglas-fir tussock moth, <i>Orgyia pseudotsugata</i> , 1948-1983 .....	28
SPRUCE PESTS .....	29
Spruce beetle, <i>Dendroctonus rufipennis</i> , 1963-1986 .....	29
Two-year-cycle spruce budworm, <i>Choristoneura biennis</i> , 1913-1980 .....	33
ALPINE FIR PESTS .....	36
Balsam bark beetle, <i>Dryocoetes confusus</i> , 1923-1986 .....	36
WESTERN HEMLOCK PESTS .....	40
Western blackheaded budworm, <i>Acleris gloverana</i> , 1966-1985 .....	40
Western hemlock looper, <i>Lambdina fiscellaria lugubrosa</i> , 1983-1986 .....	40
DECIDUOUS PESTS .....	41
Forest tent caterpillar, <i>Malacosoma disstria</i> , 1937-1984 .....	41

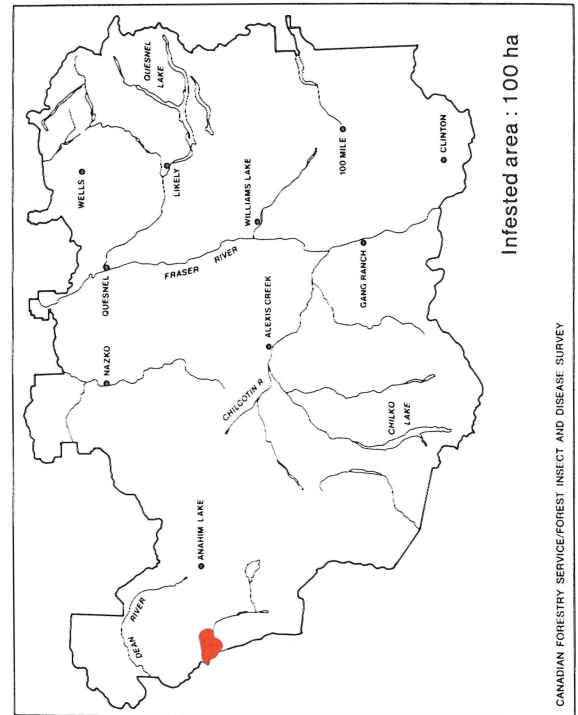
## Introduction

This report complements the earlier published History of Population Fluctuations and Infestations of Important Forest Insects in the Cariboo Forest Region. The maps are based on aeri ally visible damage as recorded in the Kamloops and Prince George Forest Insect and Disease Survey annual reports and from the Cariboo Region reports following the formation of the area into a Forest Region in 1972.

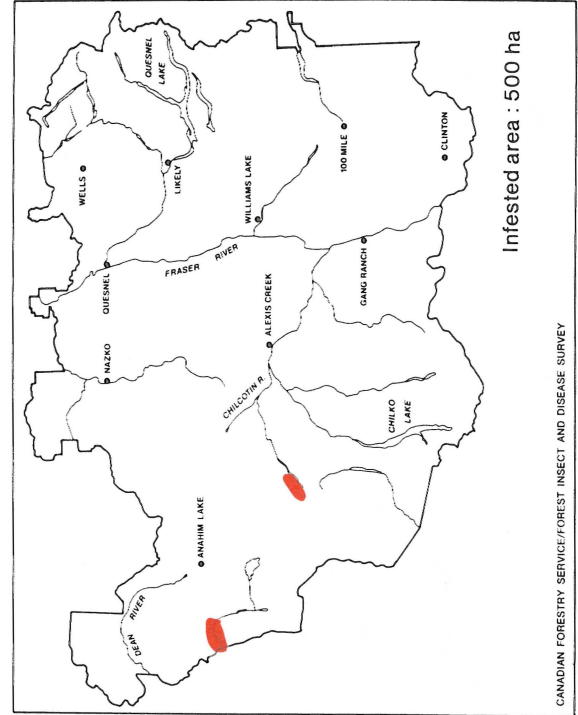
**MOUNTAIN PINE BEETLE**



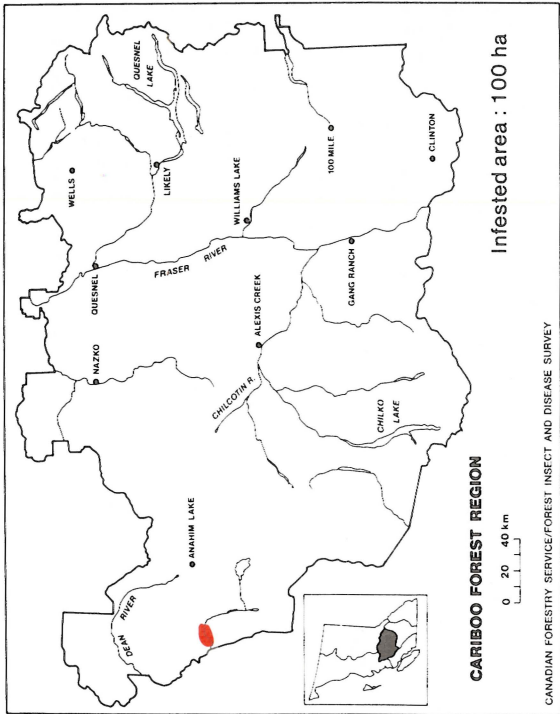
Mountain pine beetle, 1948



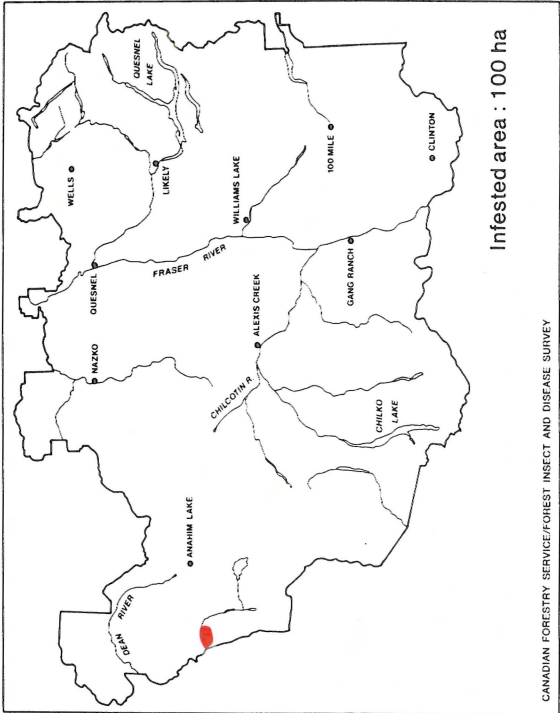
Mountain pine beetle, 1949



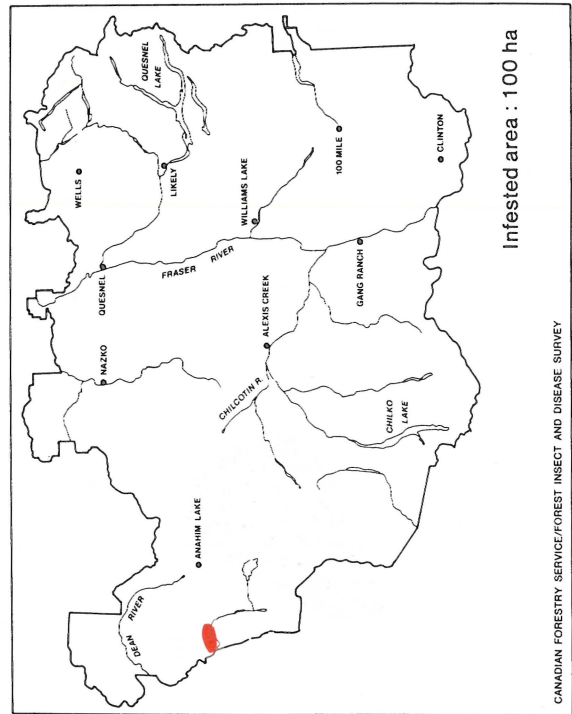
Mountain pine beetle, 1951



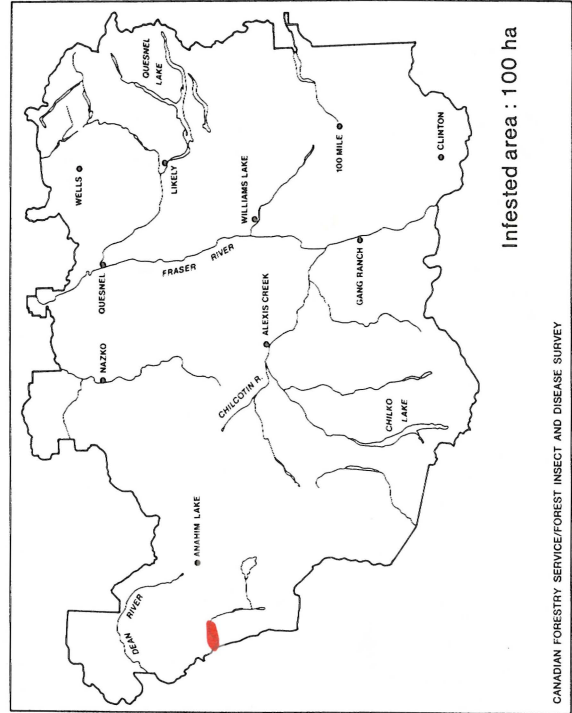
Mountain pine beetle, 1953



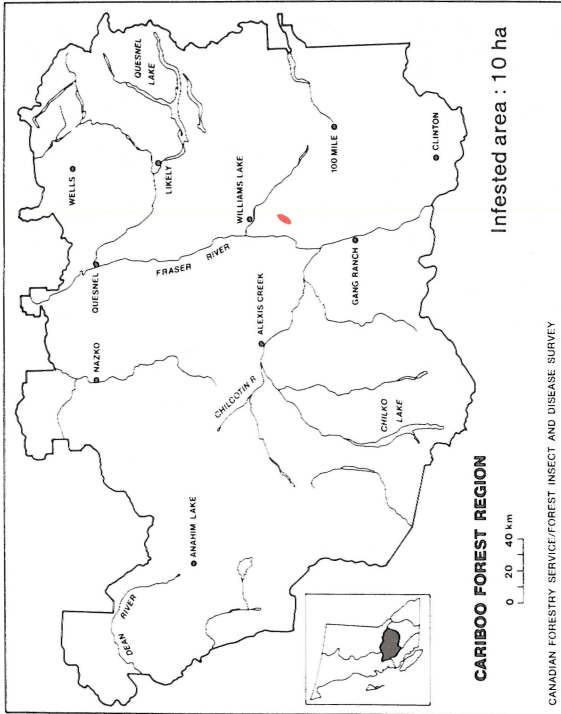
Mountain pine beetle, 1954



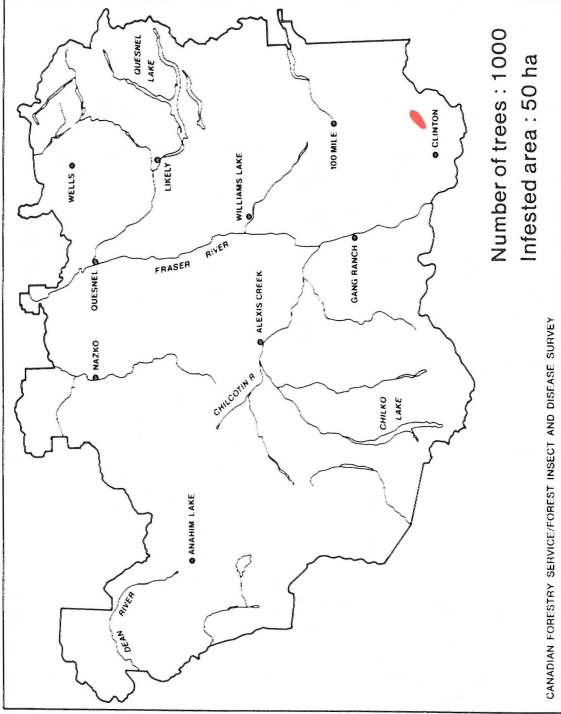
Mountain pine beetle, 1955



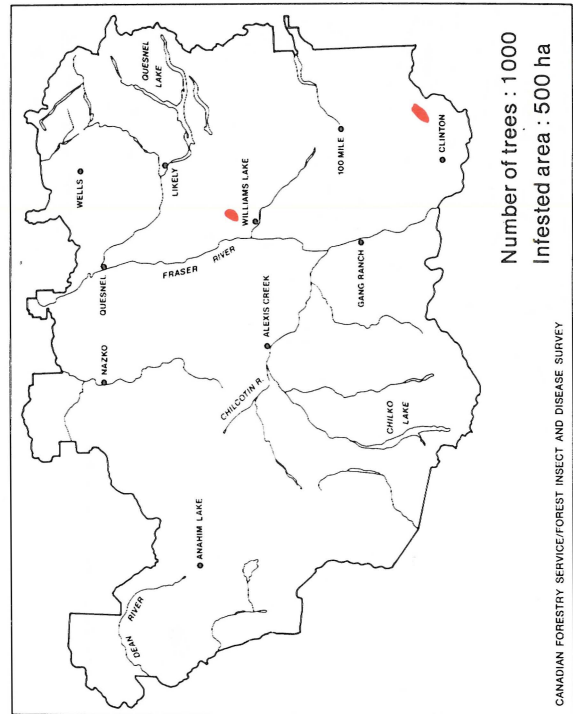
Mountain pine beetle, 1956



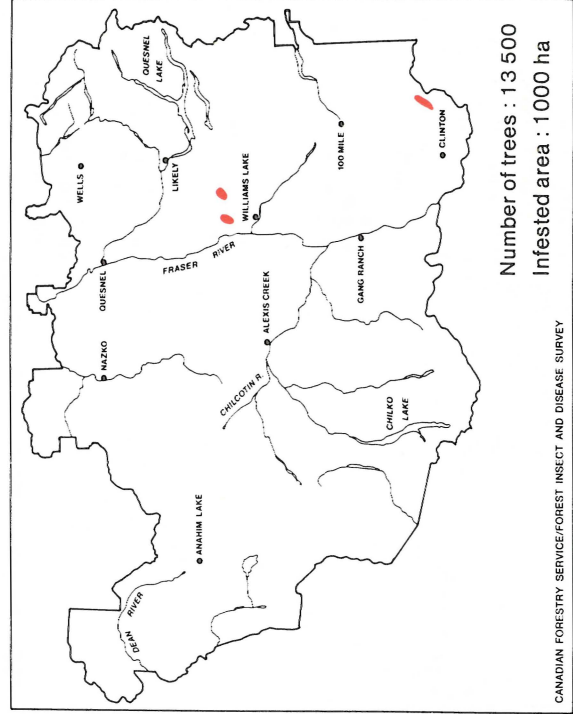
Mountain pine beetle, 1958



Mountain pine beetle, 1961

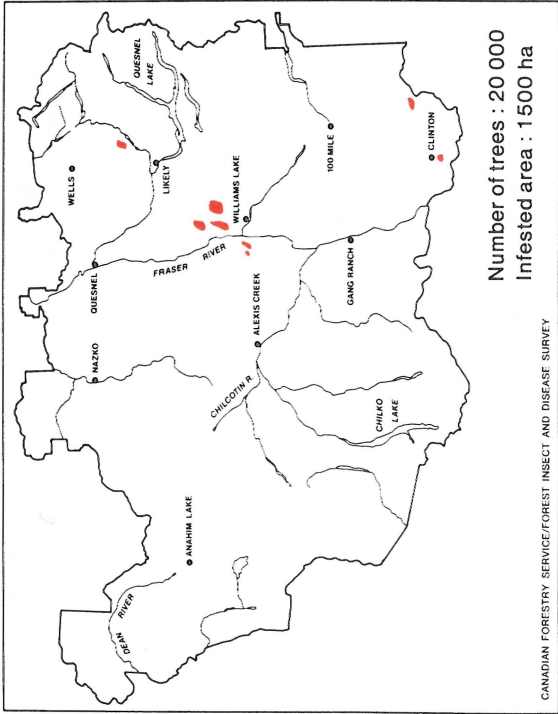


Mountain pine beetle, 1963

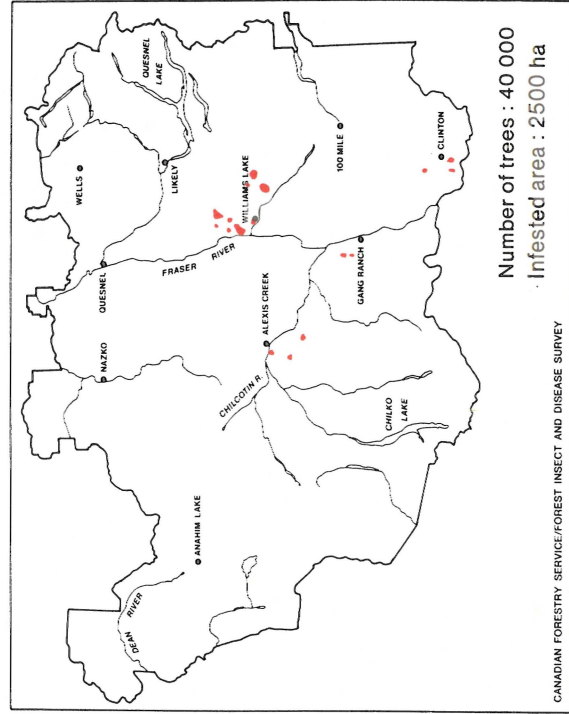


Mountain pine beetle, 1964

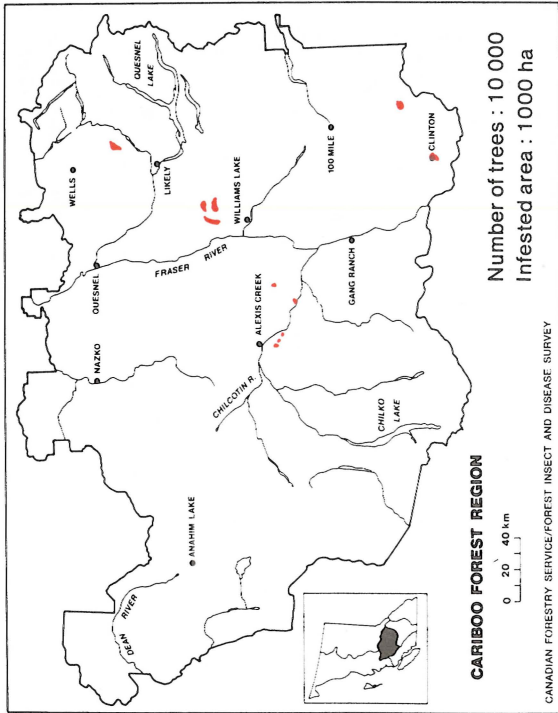




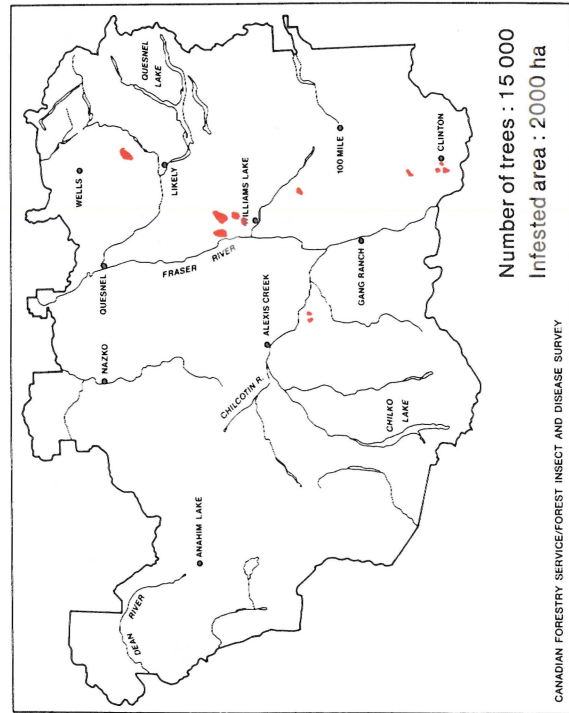
Mountain pine beetle, 1966



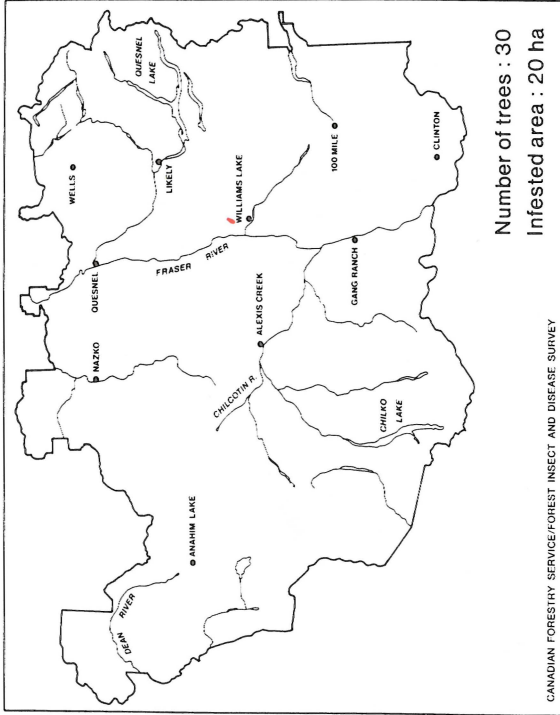
Mountain pine beetle, 1968



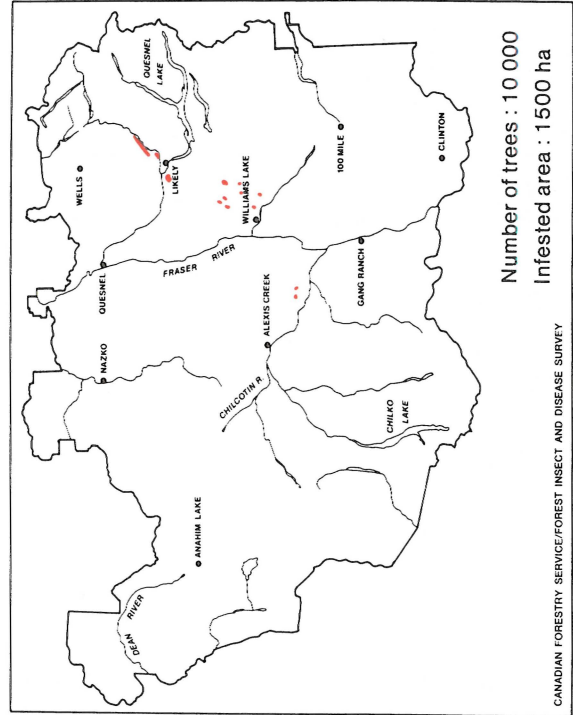
Mountain pine beetle, 1965



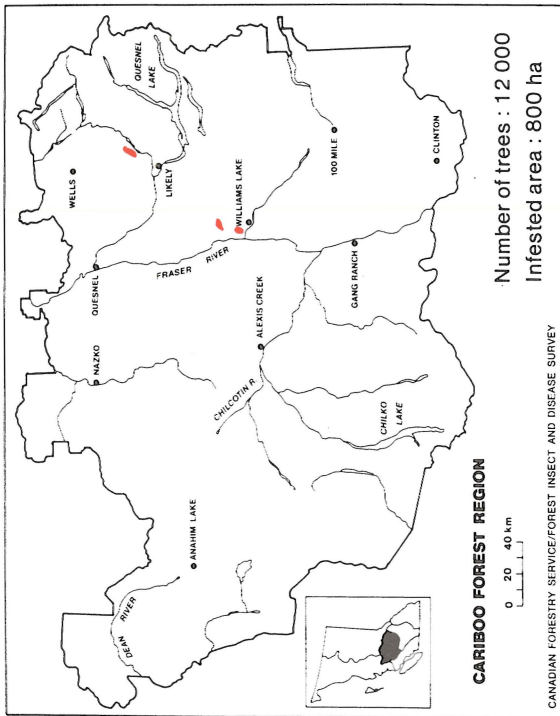
Mountain pine beetle, 1967



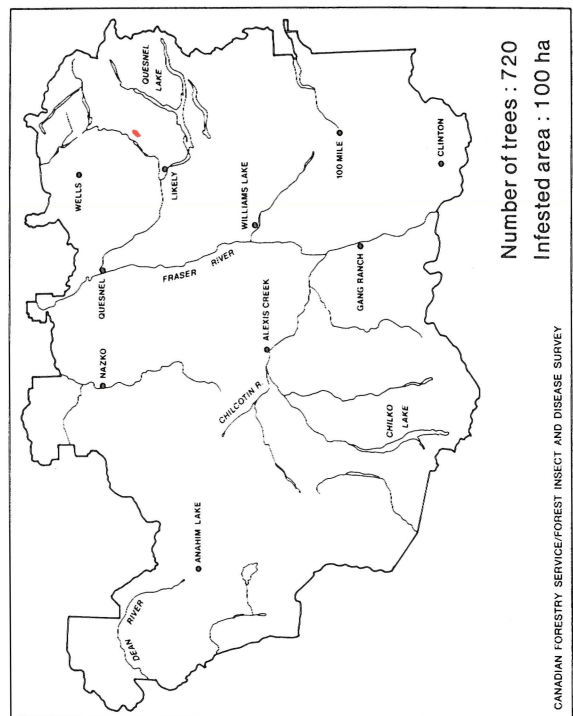
Mountain pine beetle, 1970



Mountain pine beetle, 1974



Mountain pine beetle, 1969



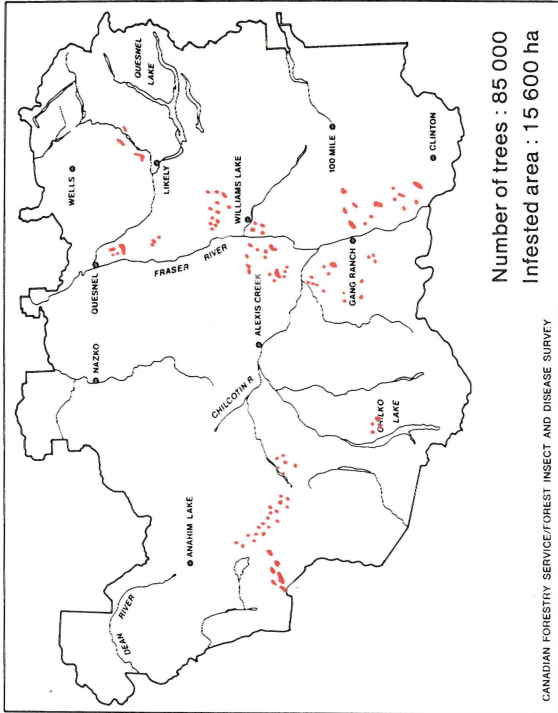
Mountain pine beetle, 1972

CANADIAN FORESTRY SERVICE/FOREST INSECT AND DISEASE SURVEY

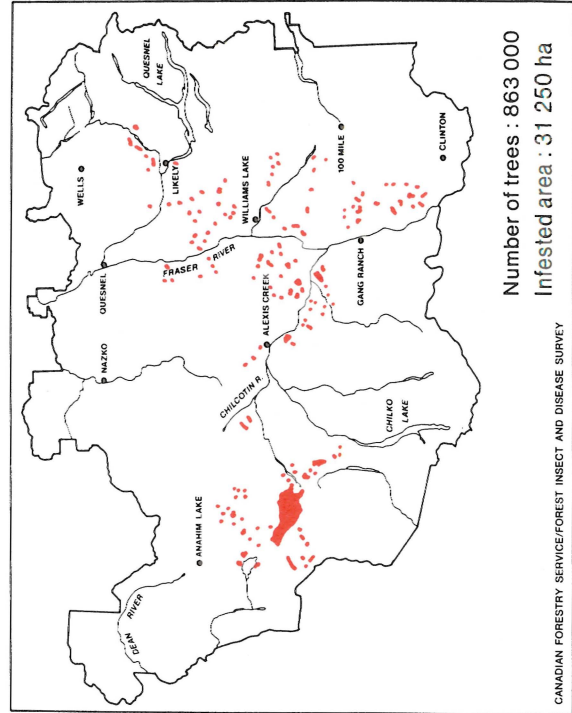
CANADIAN FORESTRY SERVICE/FOREST INSECT AND DISEASE SURVEY

CANADIAN FORESTRY SERVICE/FOREST INSECT AND DISEASE SURVEY

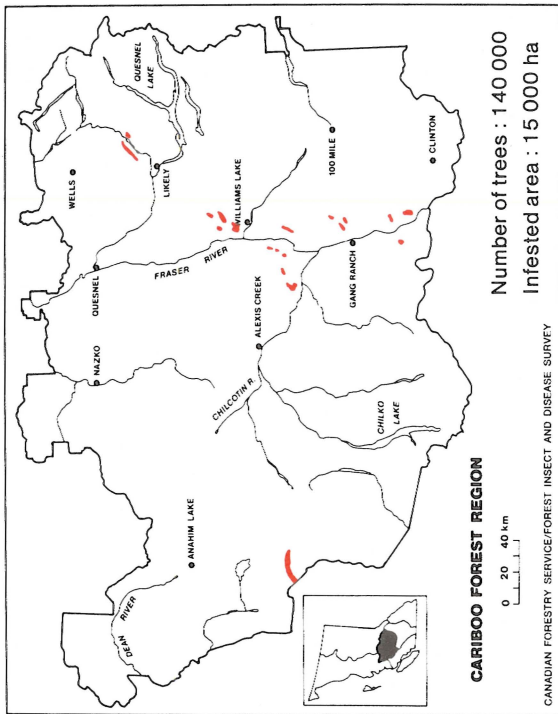
CANADIAN FORESTRY SERVICE/FOREST INSECT AND DISEASE SURVEY



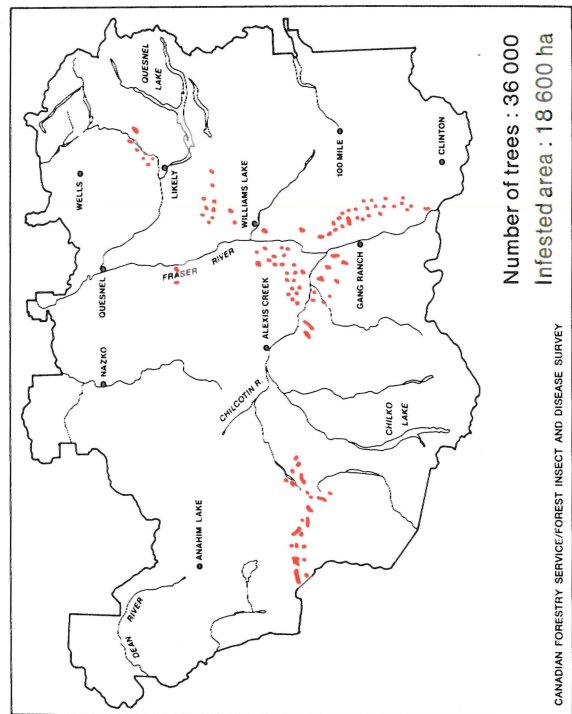
Mountain pine beetle, 1976



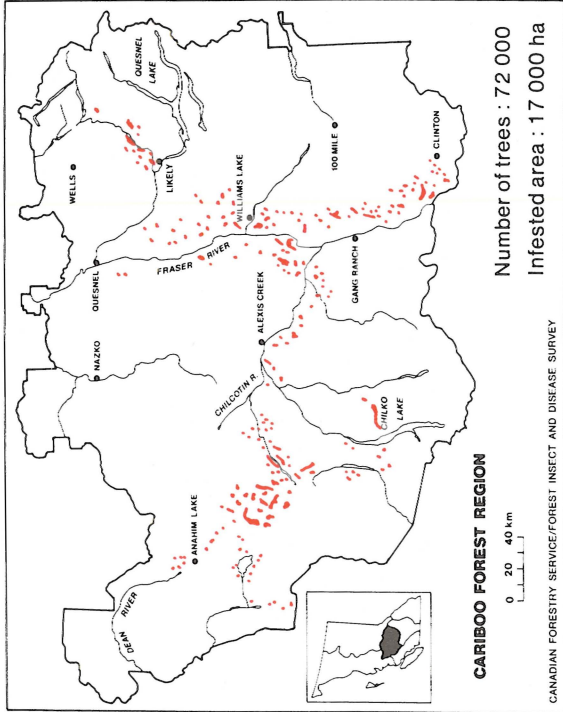
Mountain pine beetle, 1978



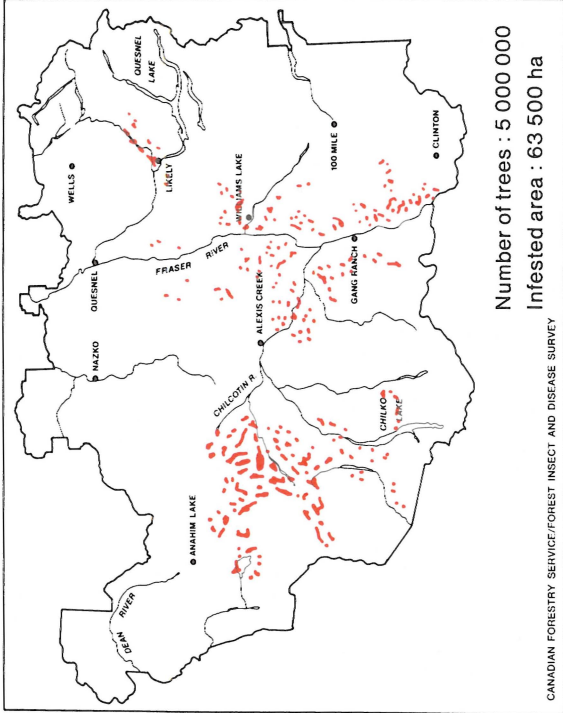
Mountain pine beetle, 1975



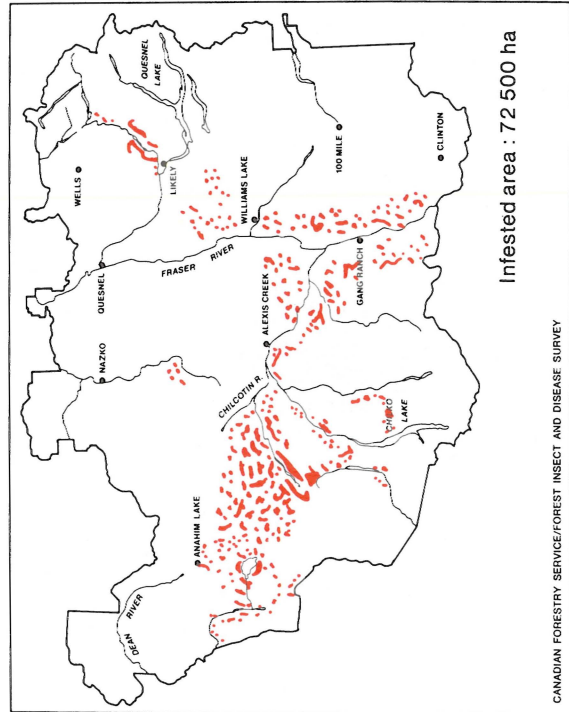
Mountain pine beetle, 1977



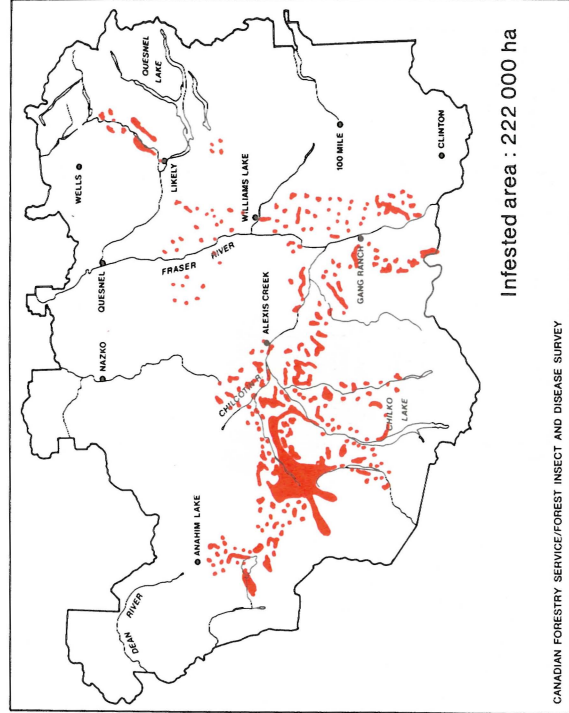
Mountain pine beetle, 1979



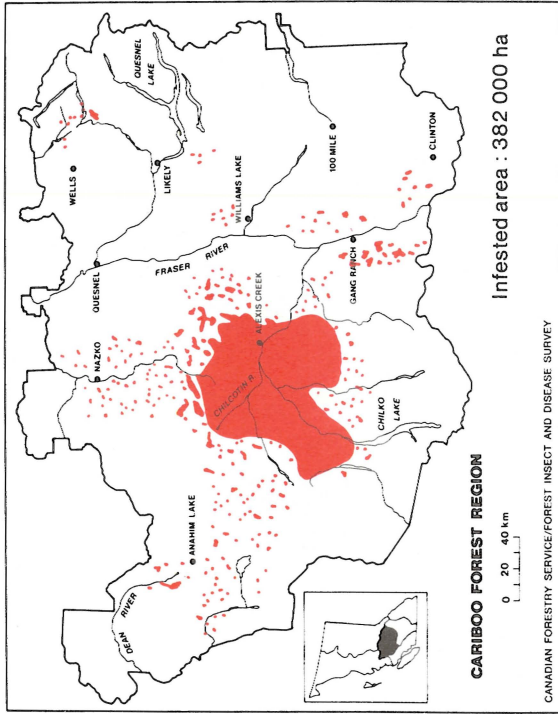
Mountain pine beetle, 1980



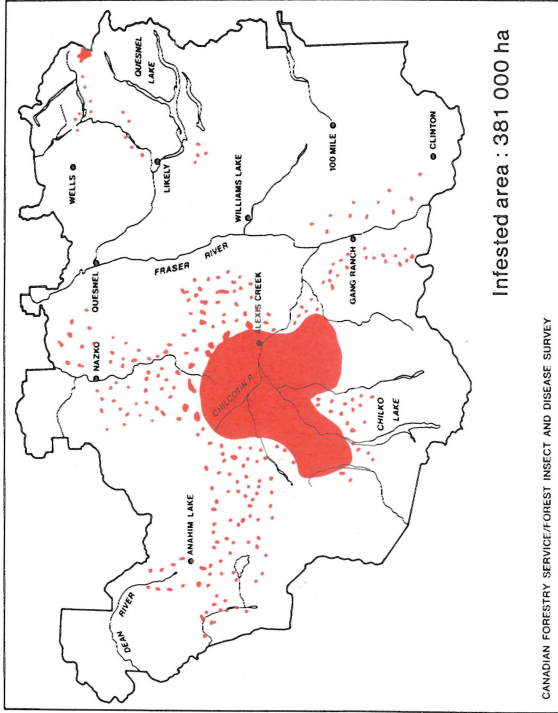
Mountain pine beetle, 1981



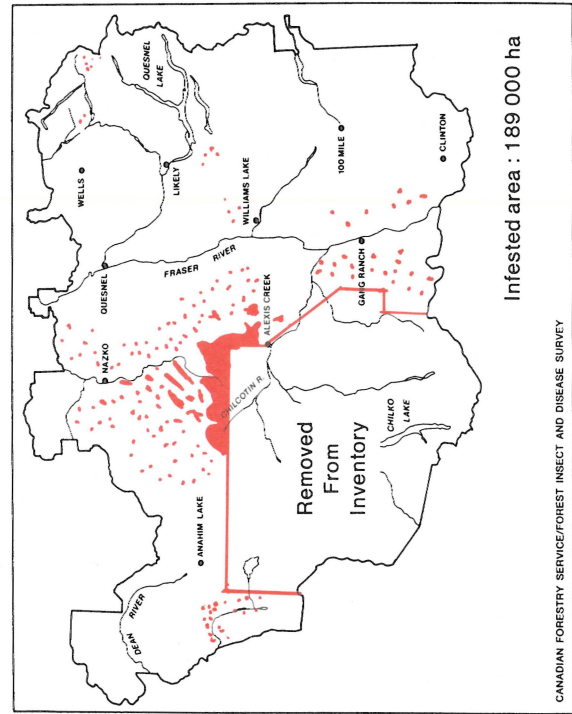
Mountain pine beetle, 1982



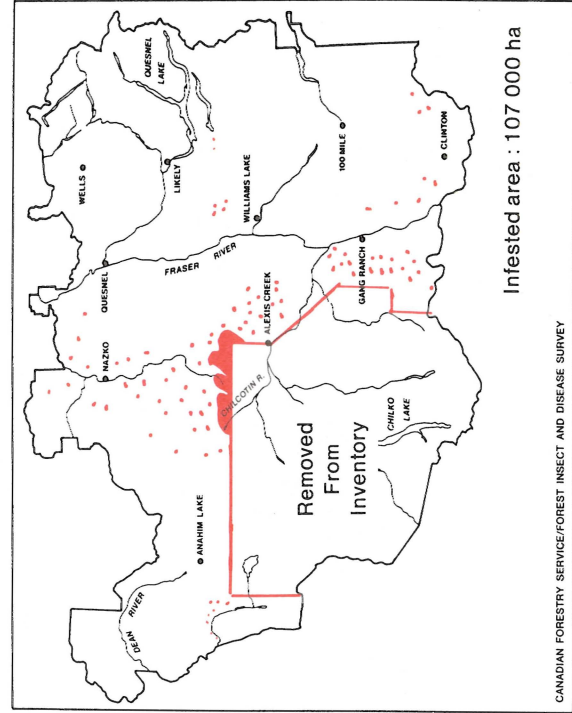
Mountain pine beetle, 1983



Mountain pine beetle, 1984

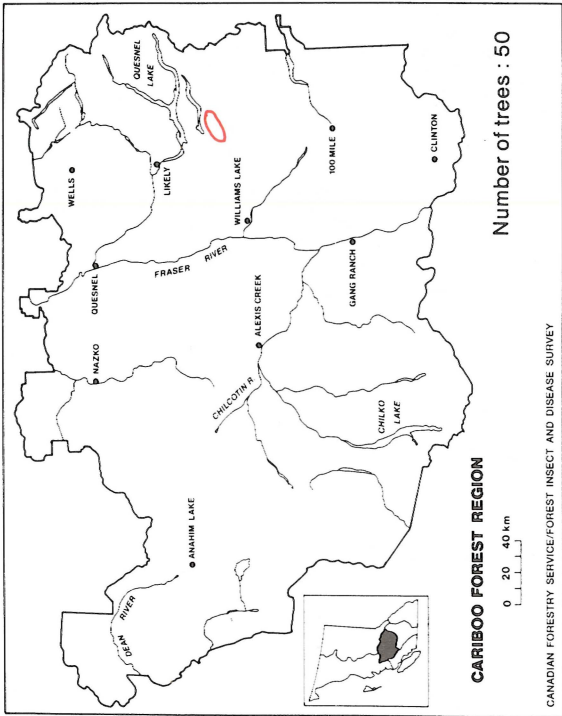


Mountain pine beetle, 1985

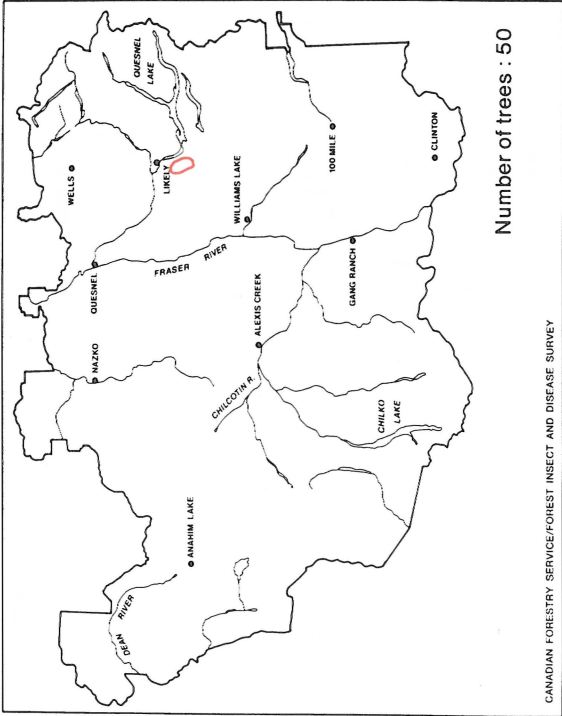


Mountain pine beetle, 1986

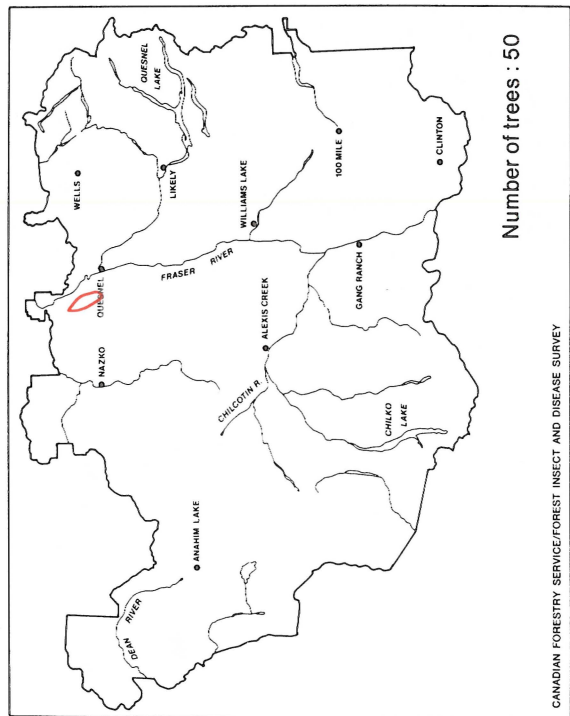
**DOUGLAS-FIR BEETLE**



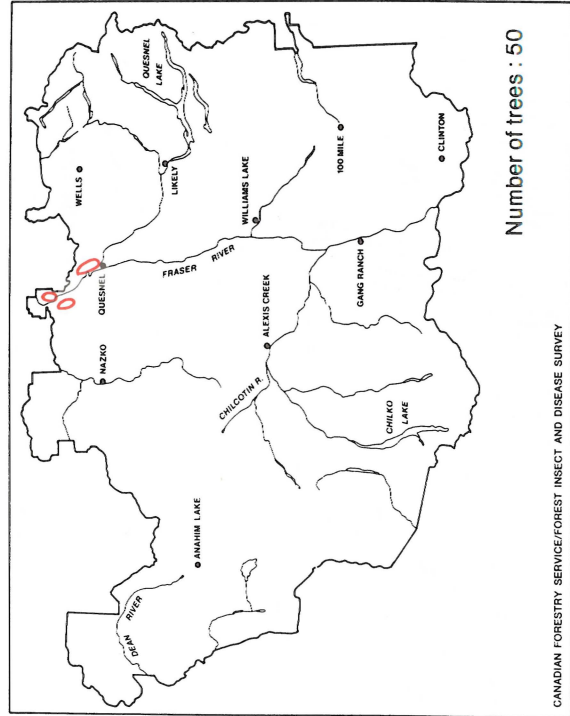
Douglas-fir beetle, 1946



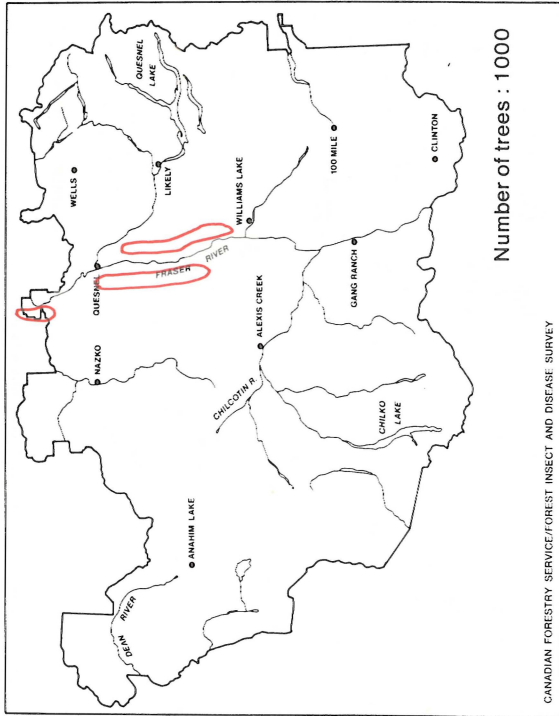
Douglas-fir beetle, 1949



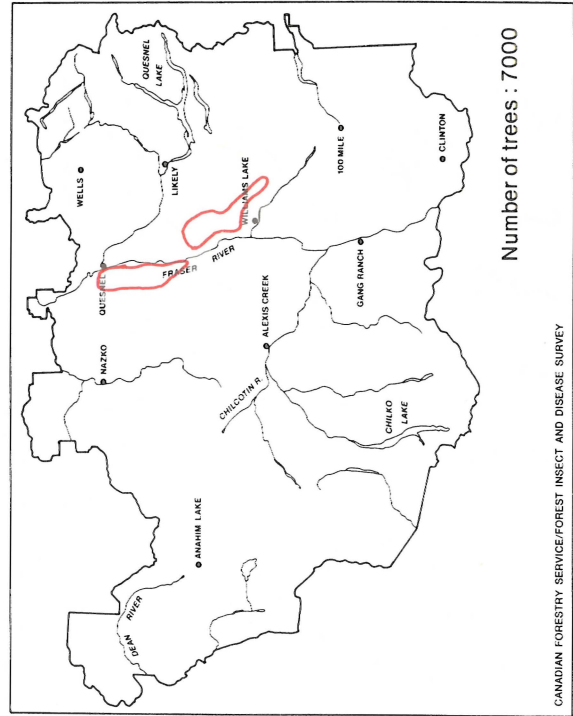
Douglas-fir beetle, 1950



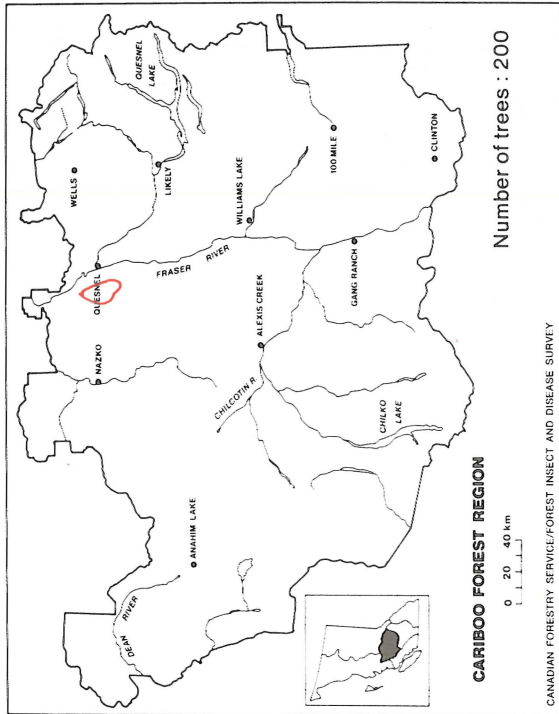
Douglas-fir beetle, 1951



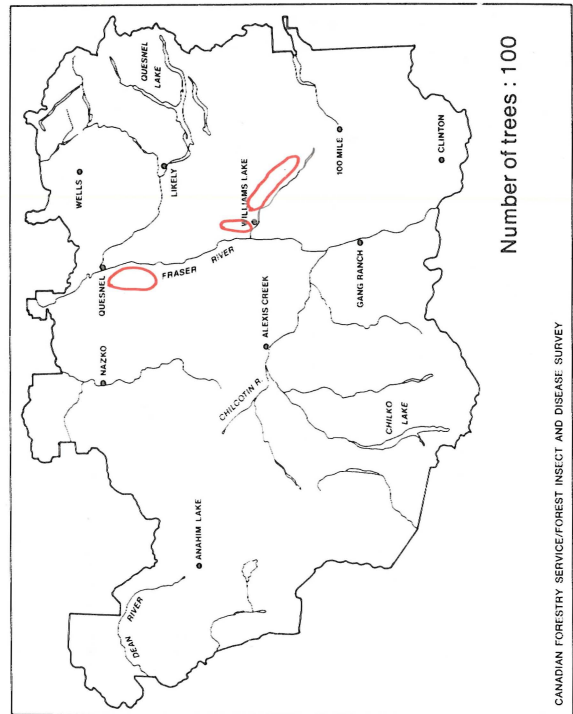
Douglas-fir beetle, 1953



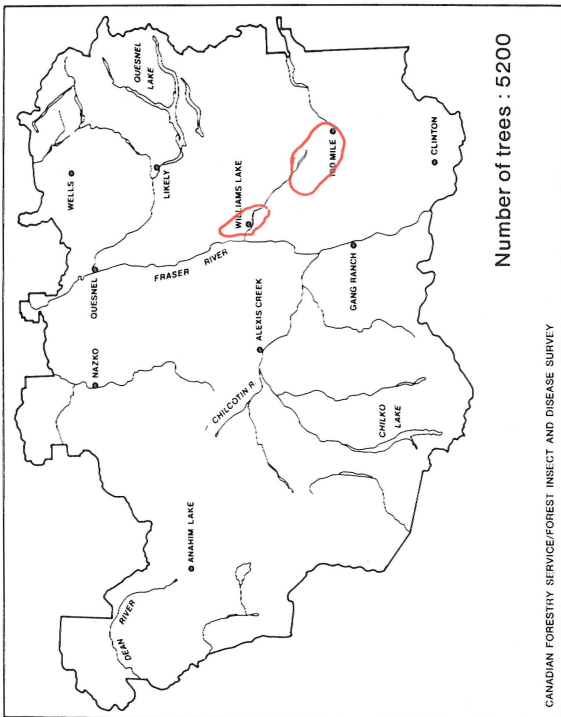
Douglas-fir beetle, 1955



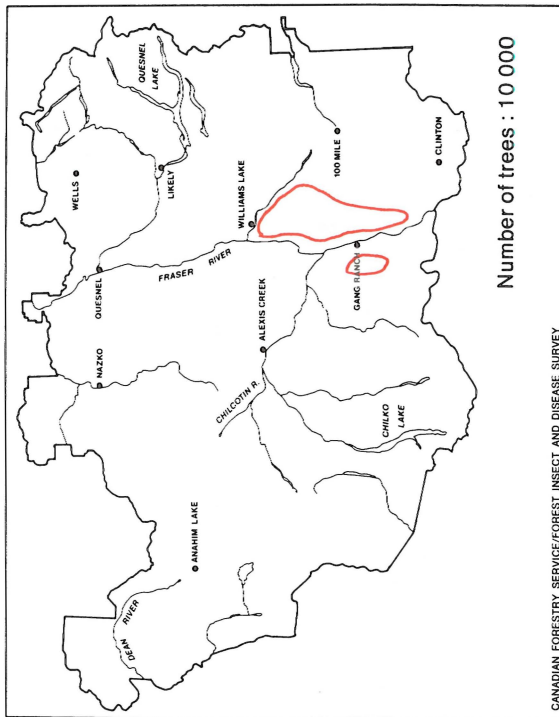
Douglas-fir beetle, 1952



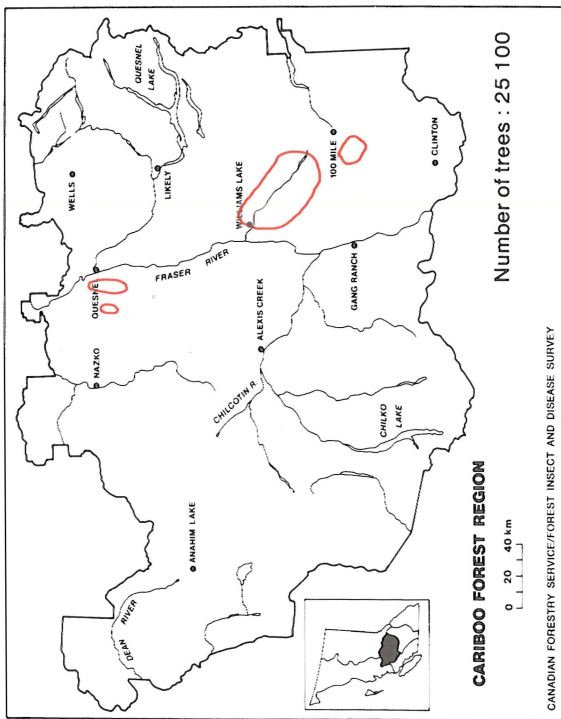
Douglas-fir beetle, 1954



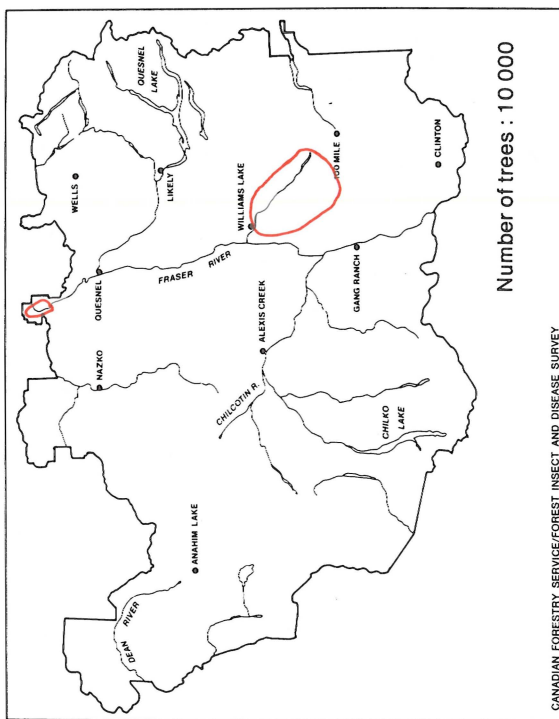
Douglas-fir beetle, 1957



Douglas-fir beetle, 1959

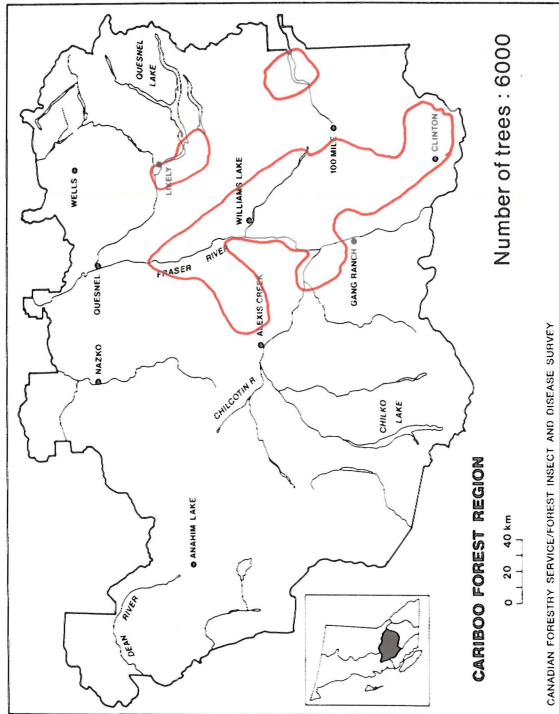


Douglas-fir beetle, 1956

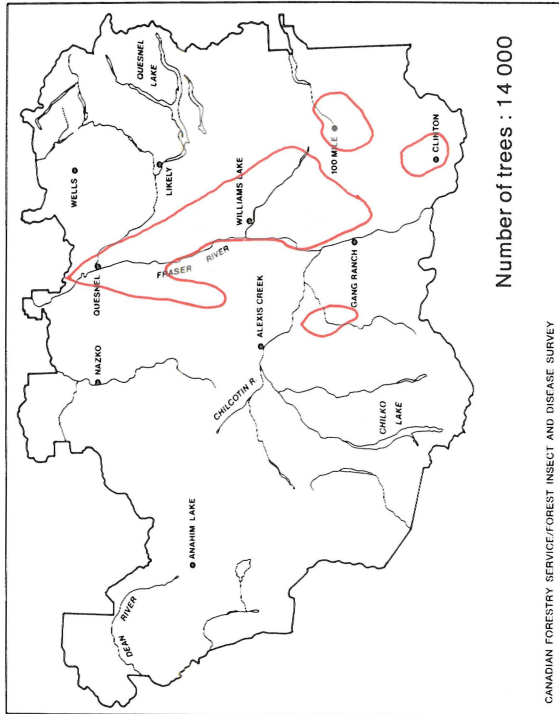


Douglas-fir beetle, 1958

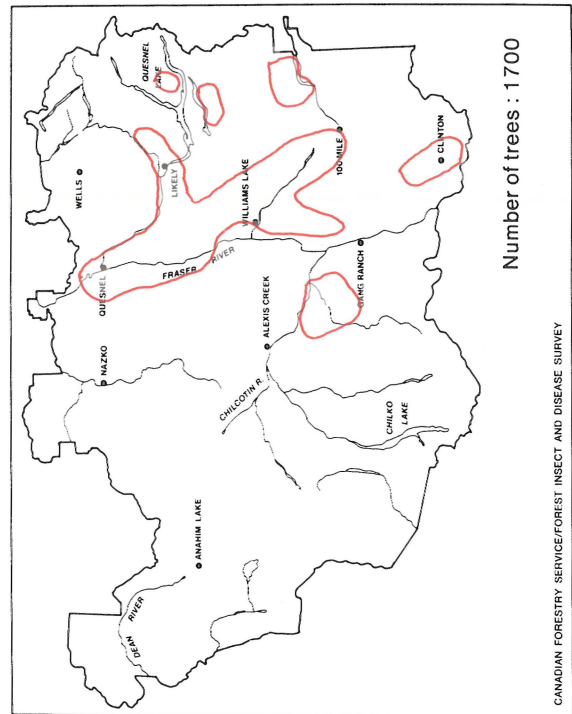




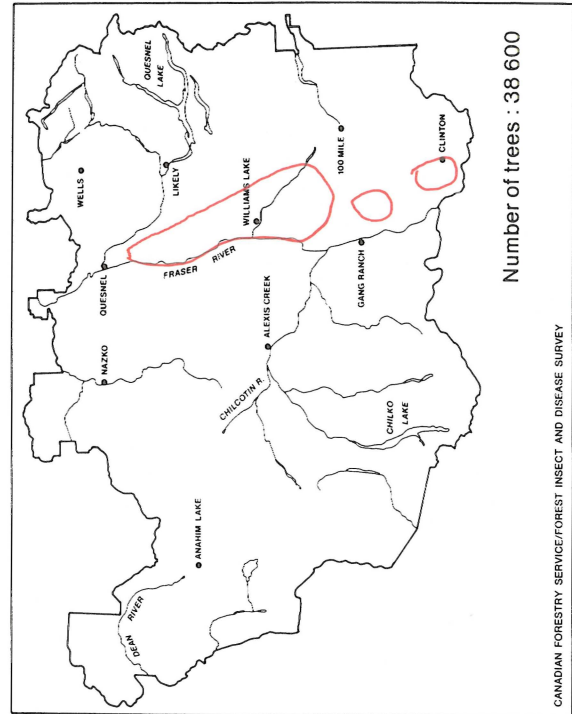
Douglas-fir beetle, 1960



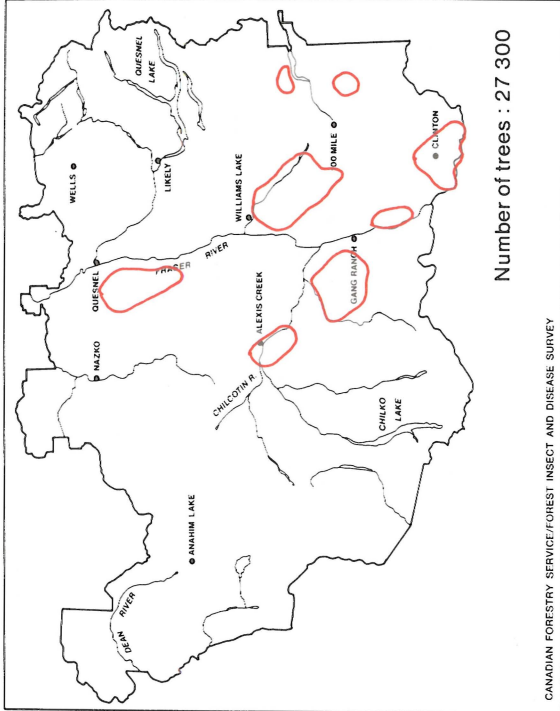
Douglas-fir beetle, 1961



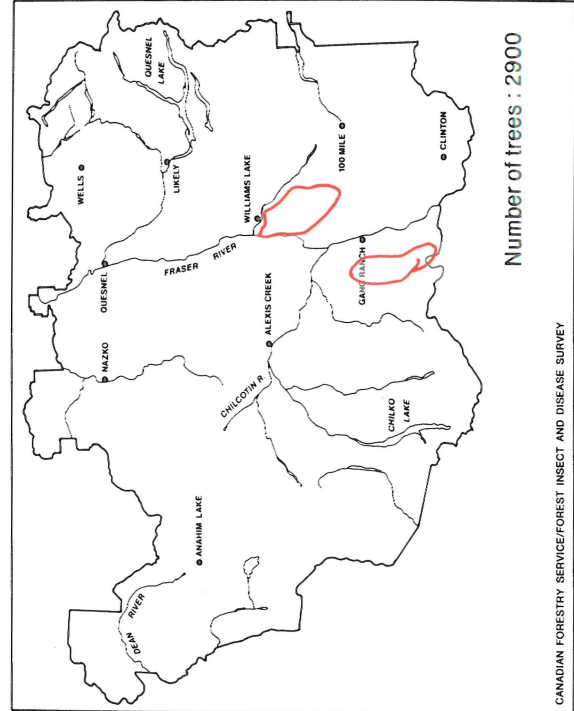
Douglas-fir beetle, 1962



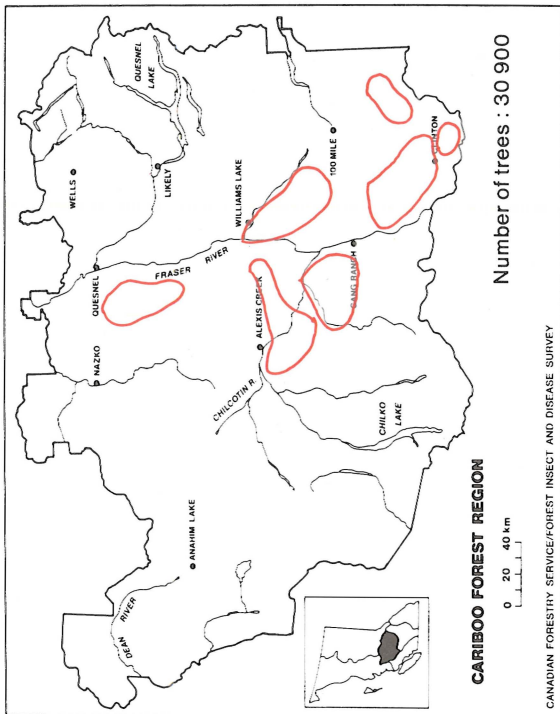
Douglas-fir beetle, 1963



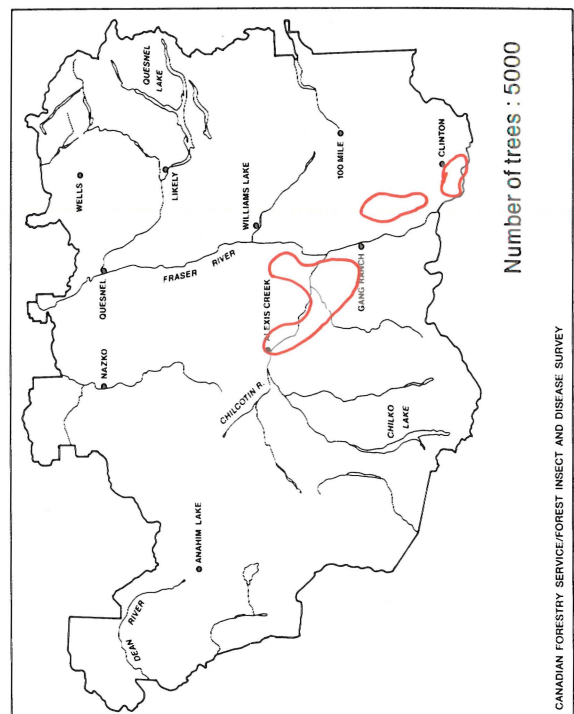
Douglas-fir beetle, 1965



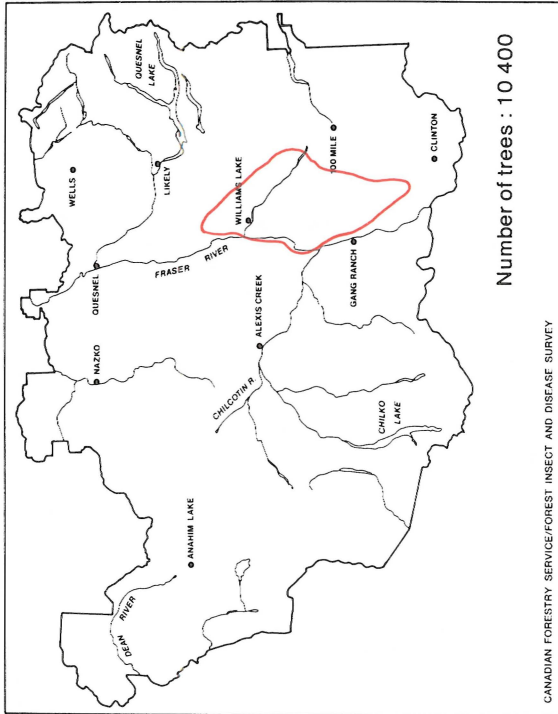
Douglas-fir beetle, 1967



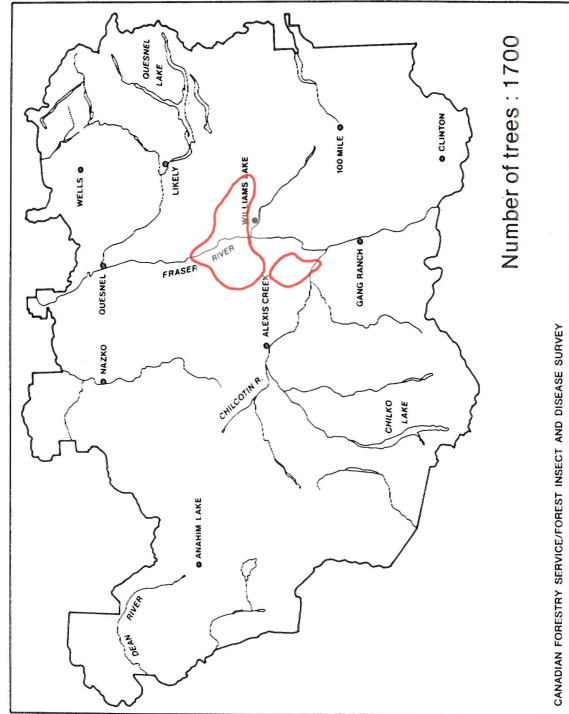
Douglas-fir beetle, 1964



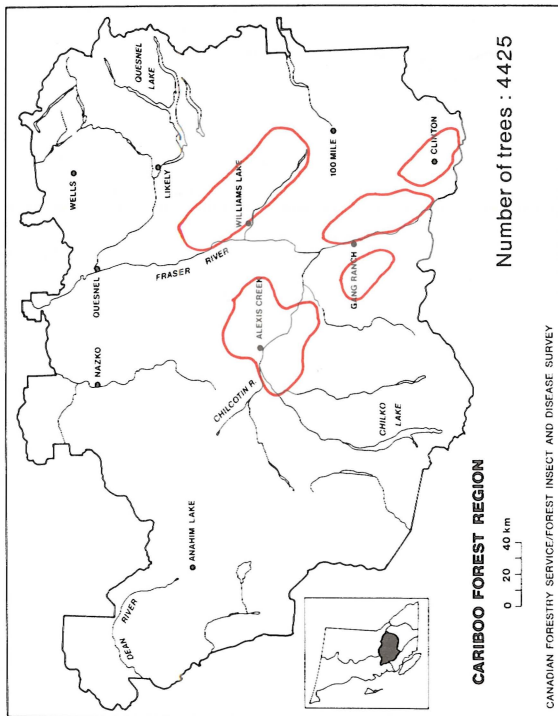
Douglas-fir beetle, 1966



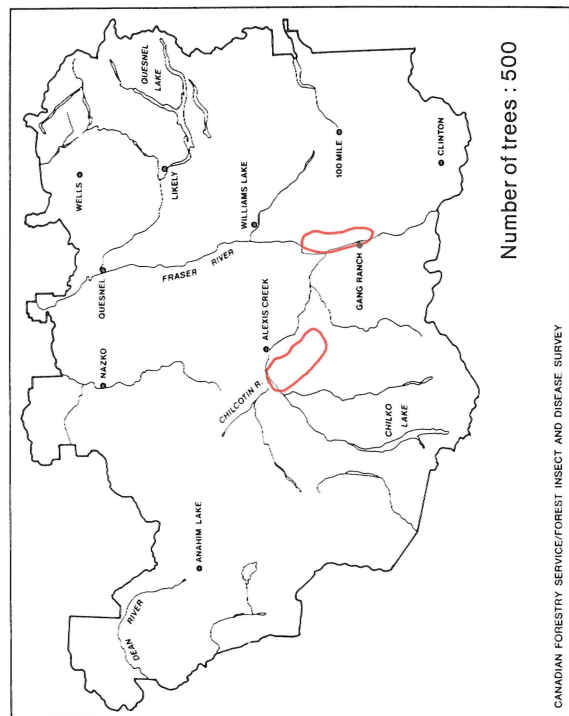
Douglas-fir beetle, 1969



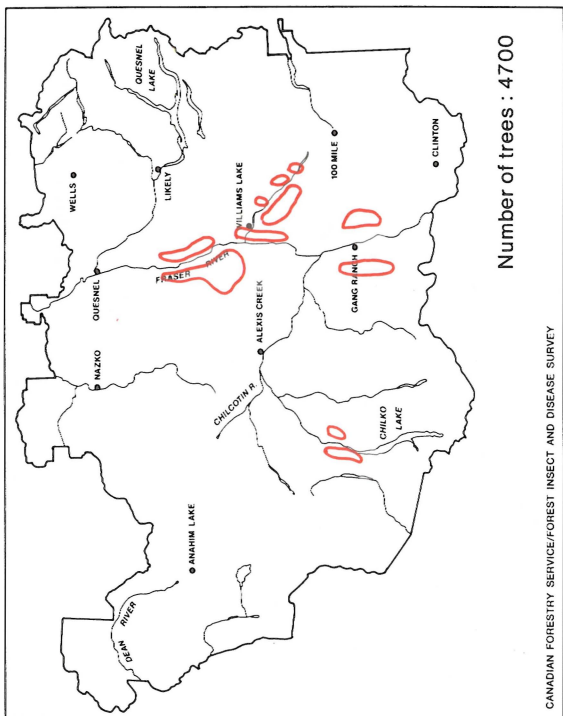
Douglas-fir beetle, 1973



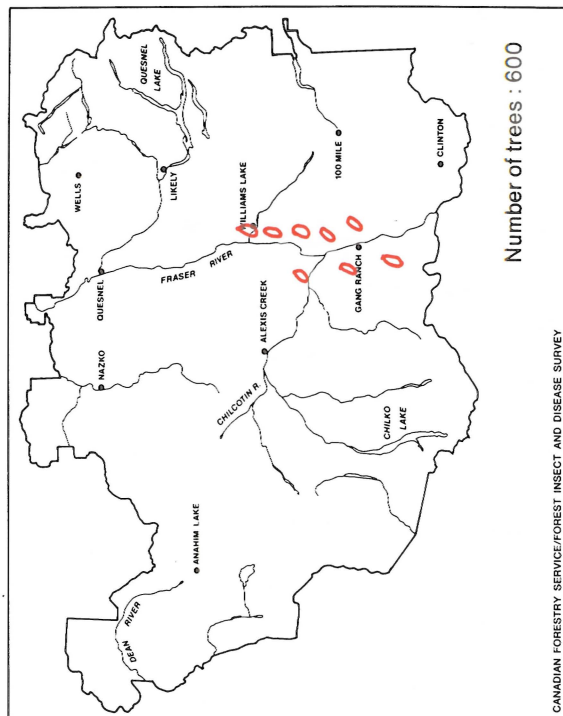
Douglas-fir beetle, 1968



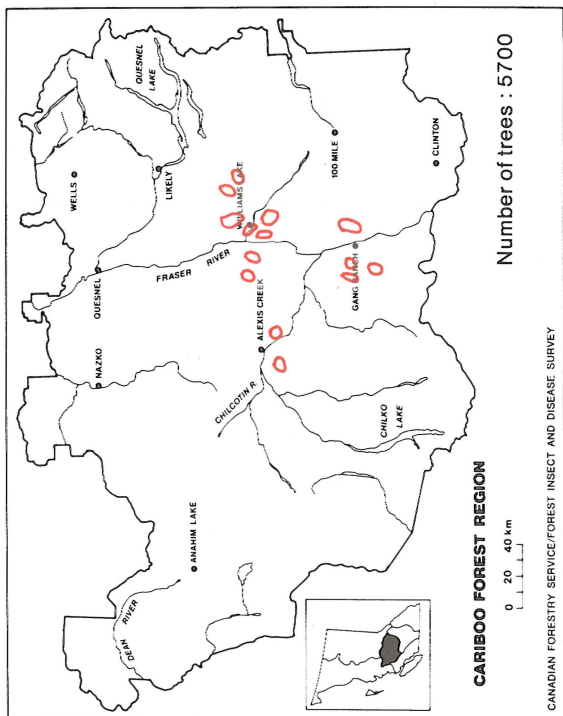
Douglas-fir beetle, 1972



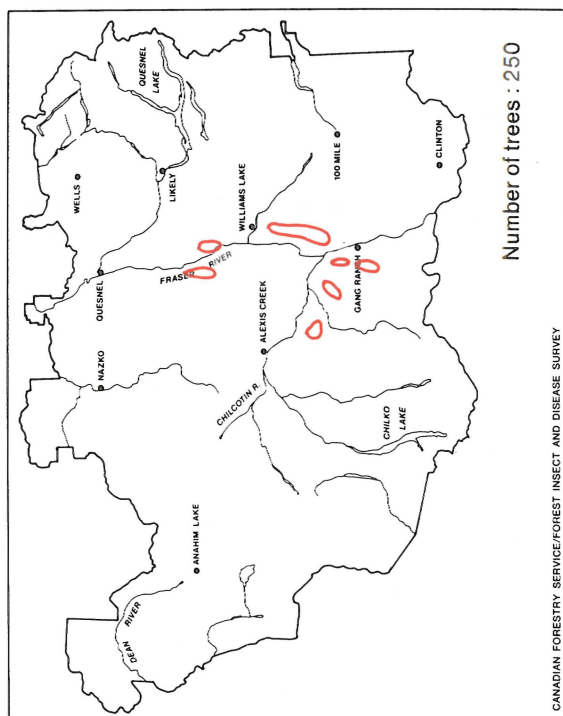
Douglas-fir beetle, 1975



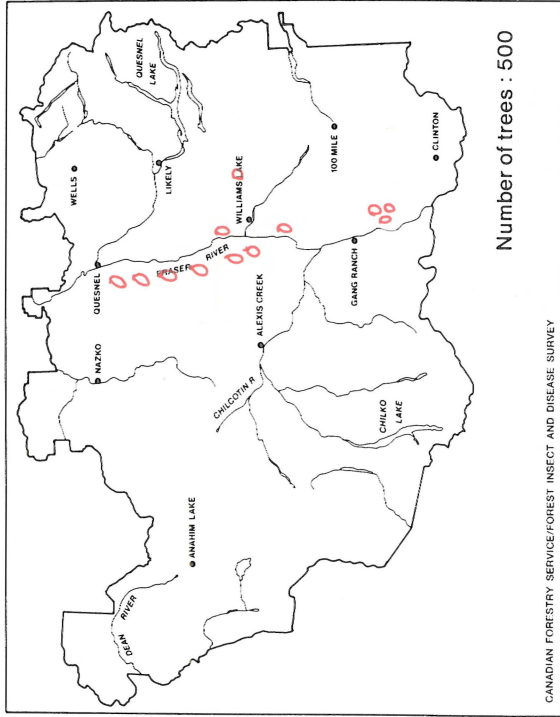
Douglas-fir beetle, 1977



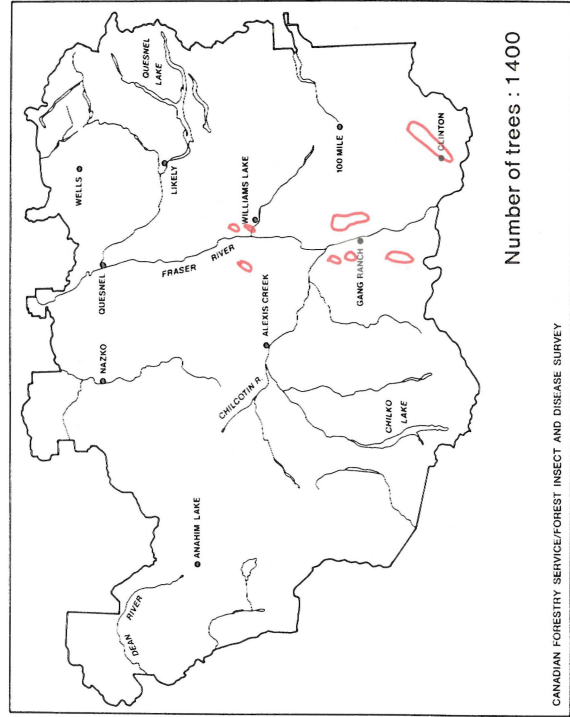
Douglas-fir beetle, 1974



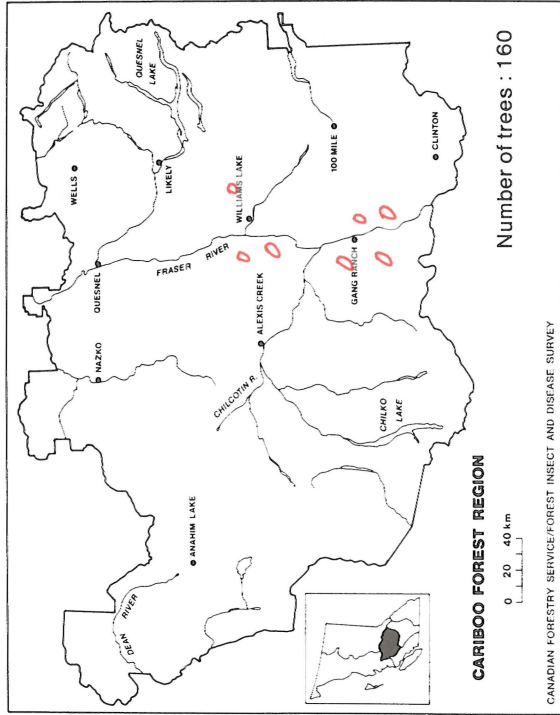
Douglas-fir beetle, 1976



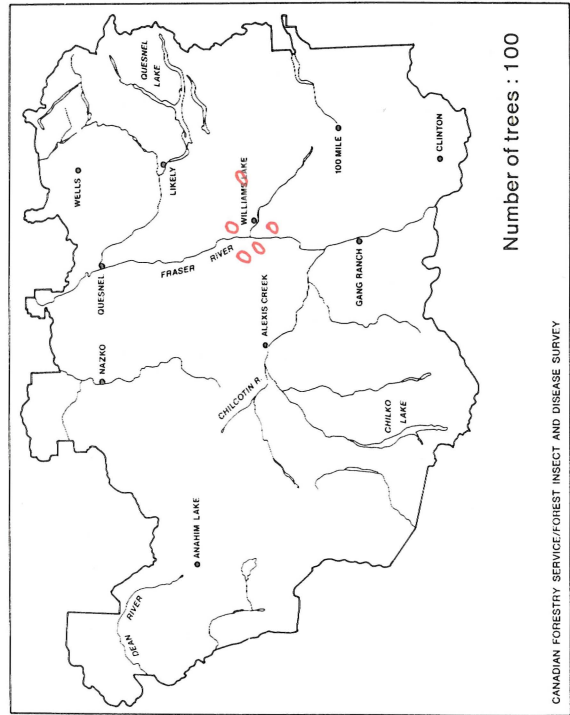
Douglas-fir beetle, 1979



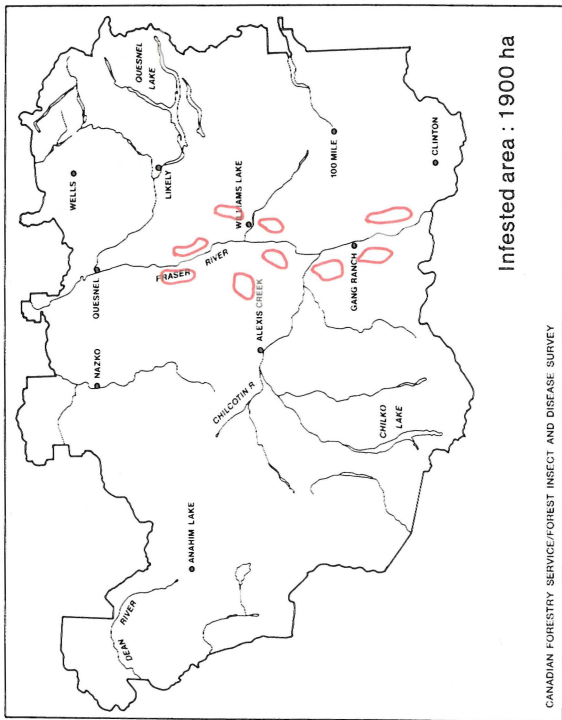
Douglas-fir beetle, 1981



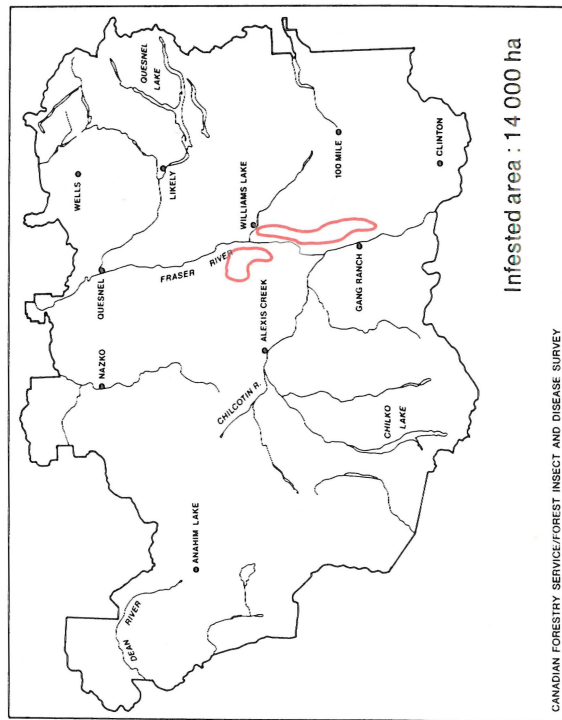
Douglas-fir beetle, 1978



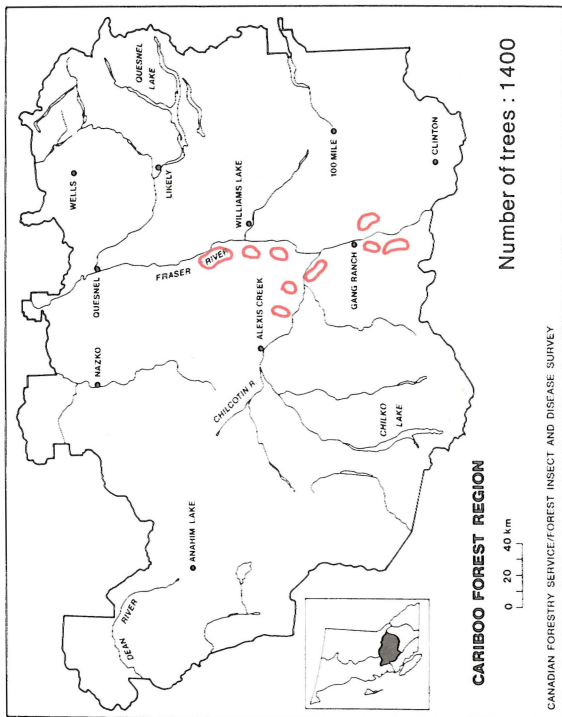
Douglas-fir beetle, 1980



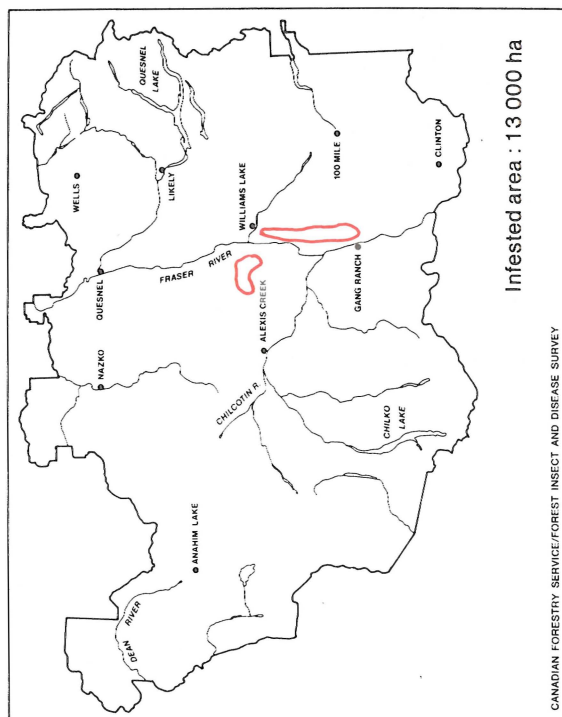
Douglas-fir beetle, 1983



Douglas-fir beetle, 1985



Douglas-fir beetle, 1982



Douglas-fir beetle, 1984

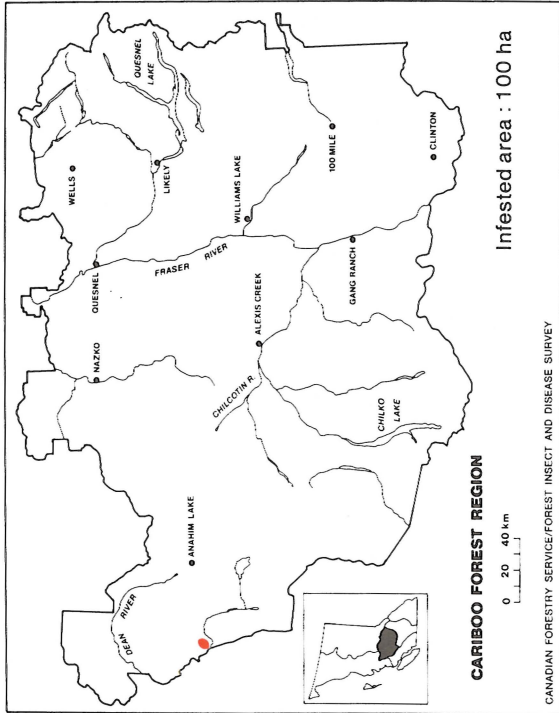
CANADIAN FORESTRY SERVICE/FOREST INSECT AND DISEASE SURVEY

CANADIAN FORESTRY SERVICE/FOREST INSECT AND DISEASE SURVEY

CANADIAN FORESTRY SERVICE/FOREST INSECT AND DISEASE SURVEY

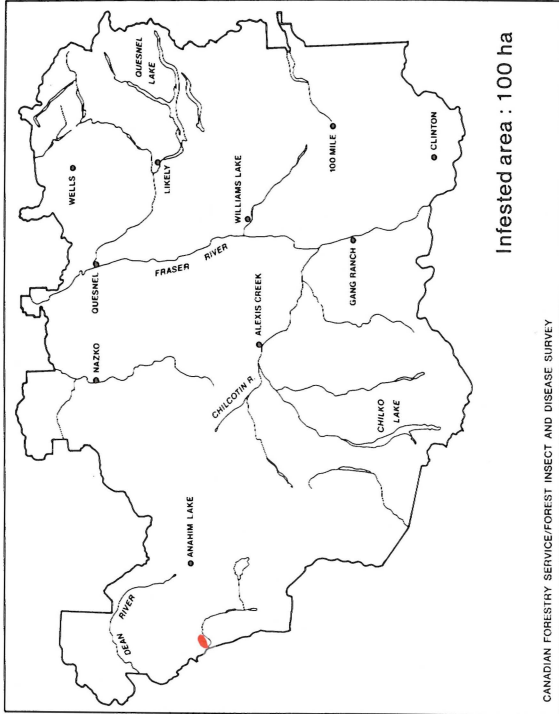
CANADIAN FORESTRY SERVICE/FOREST INSECT AND DISEASE SURVEY

**WESTERN SPRUCE BUDWORM**



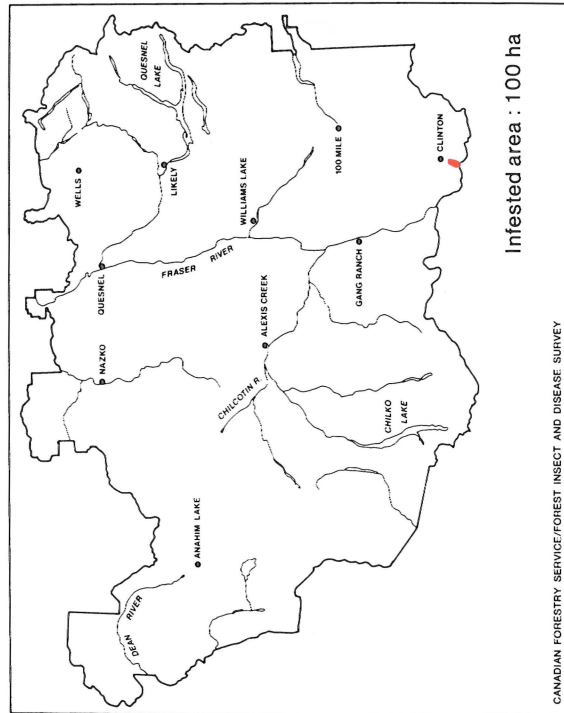
Infested area : 100 ha

Western spruce budworm, 1972



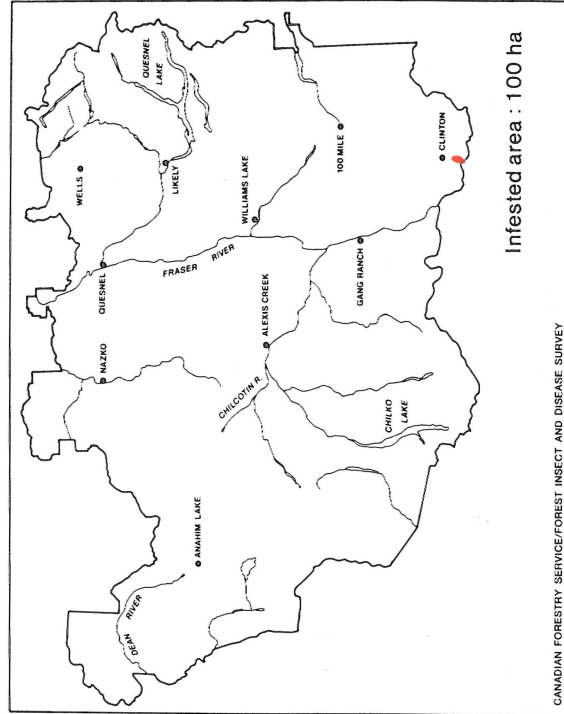
Infested area : 100 ha

Western spruce budworm, 1973



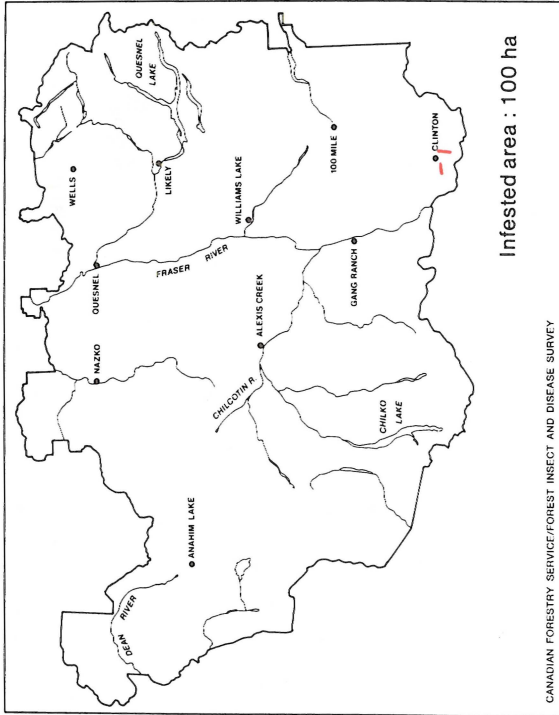
Infested area : 100 ha

Western spruce budworm, 1974

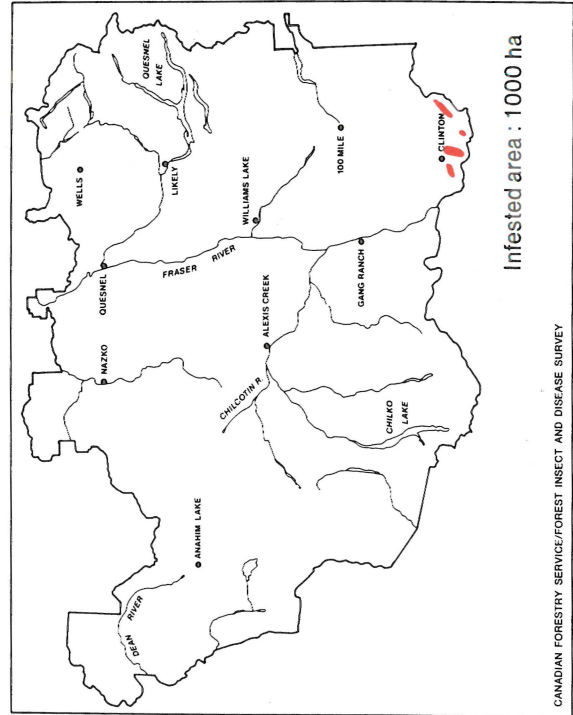


Infested area : 100 ha

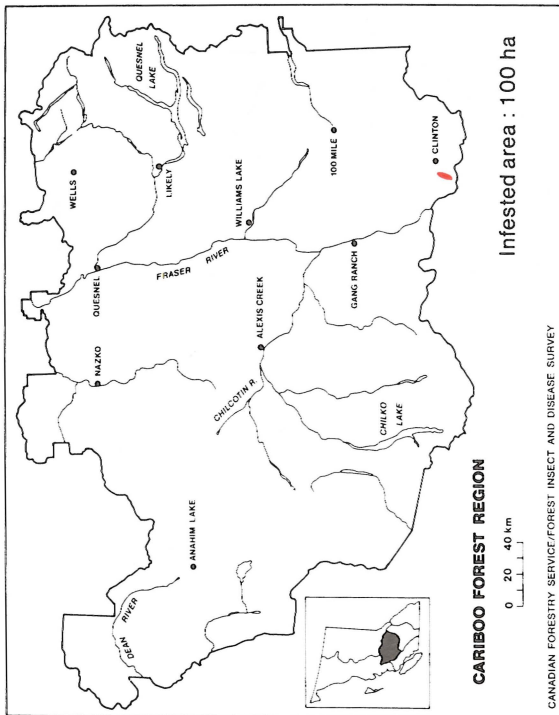
Western spruce budworm, 1975



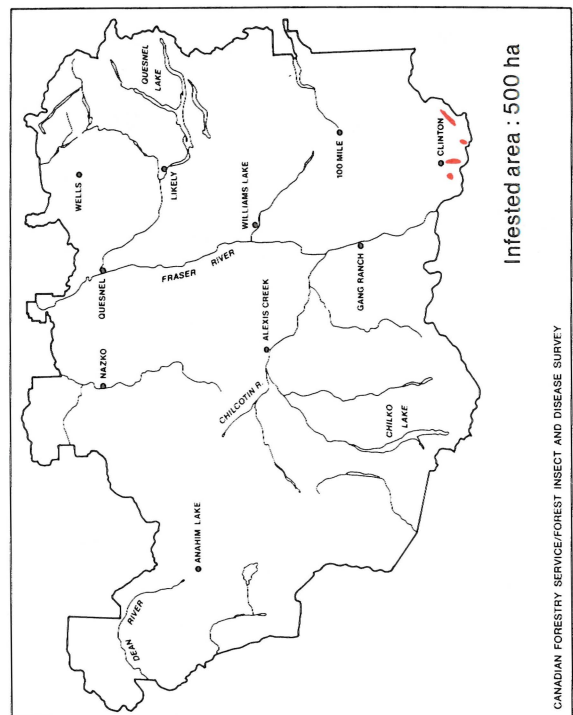
Western spruce budworm, 1977



Western spruce budworm, 1979

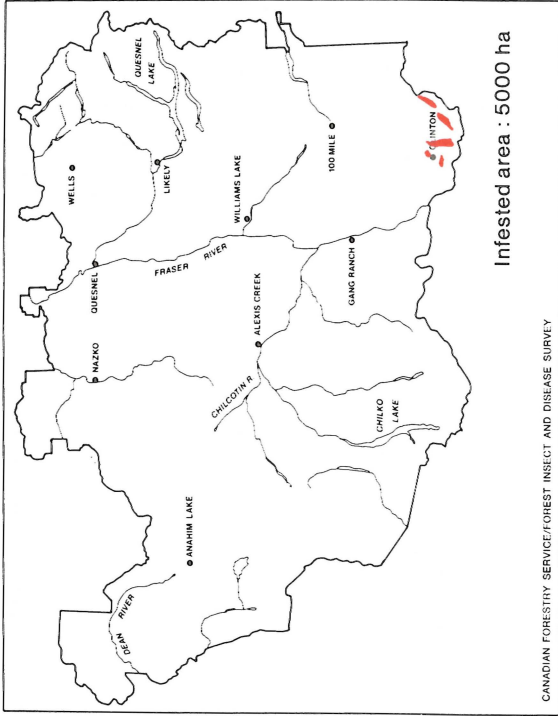


Western spruce budworm, 1976

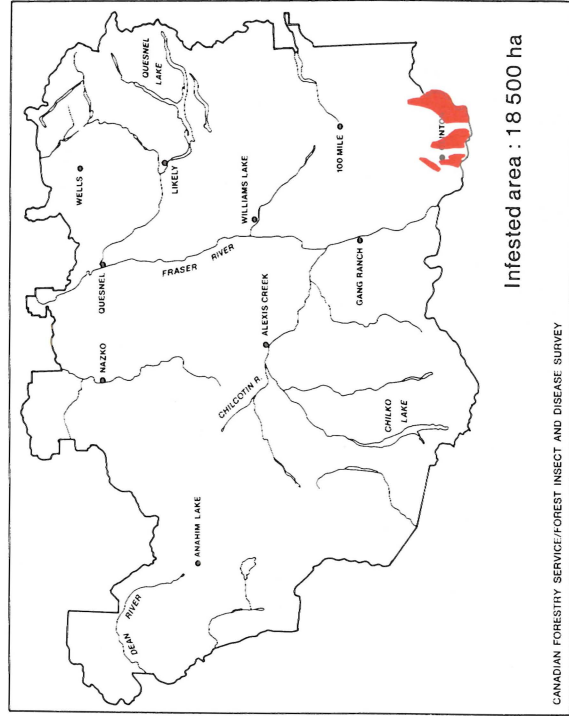


Western spruce budworm, 1978

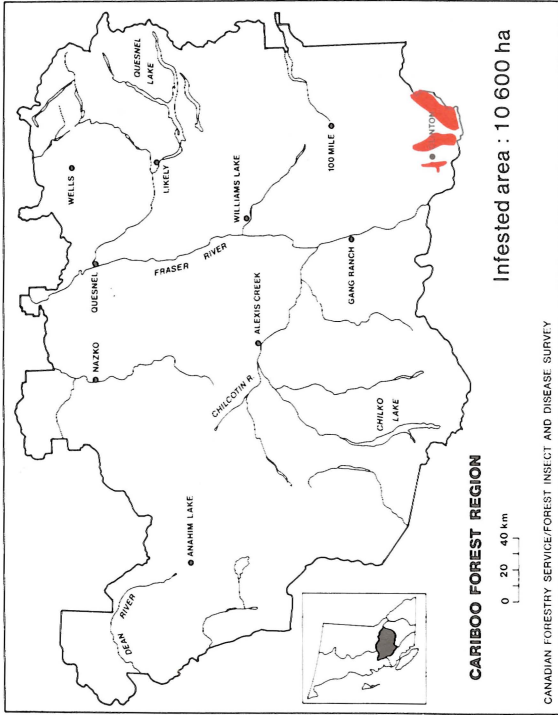




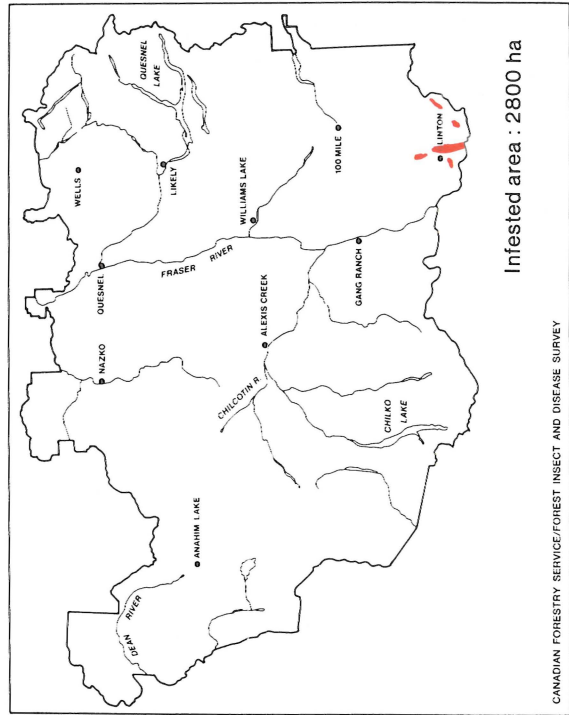
Western spruce budworm, 1981



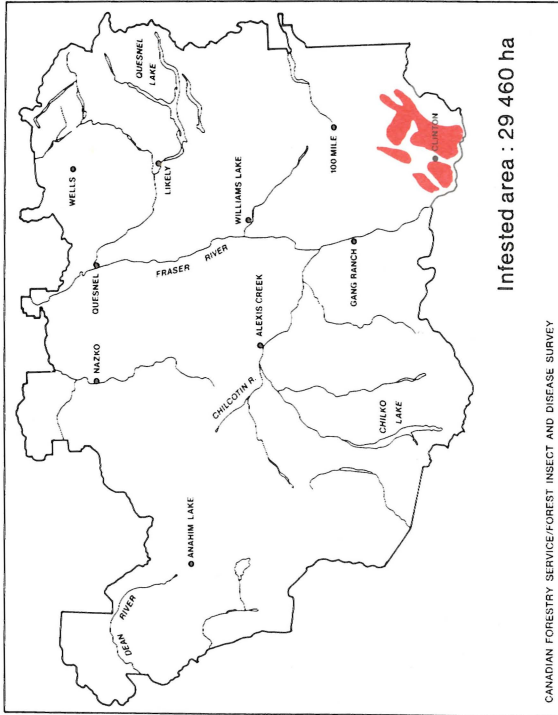
Western spruce budworm, 1983



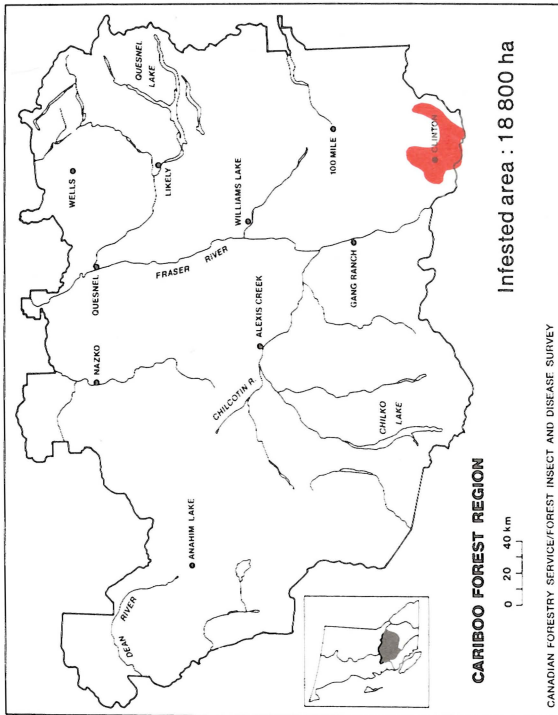
Western spruce budworm, 1980



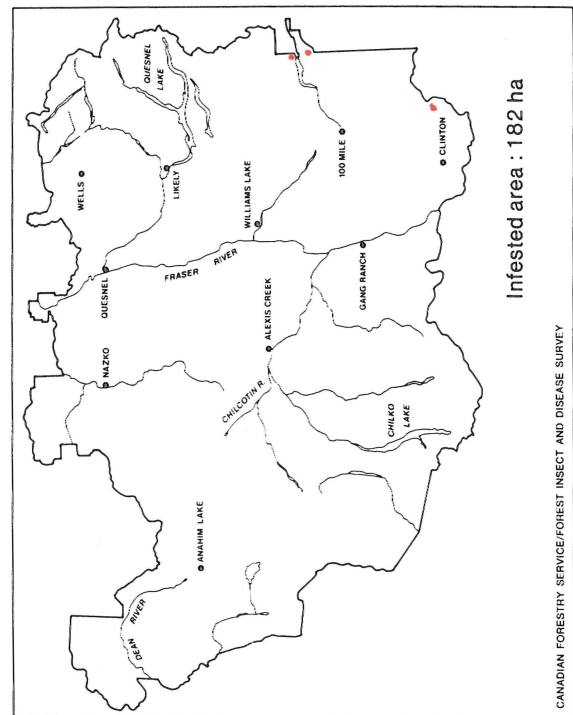
Western spruce budworm, 1982



Western spruce budworm, 1985

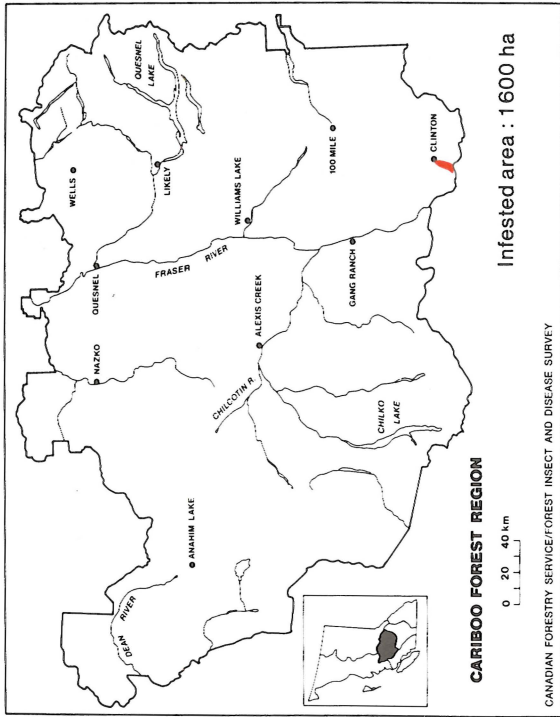


Western spruce budworm, 1984

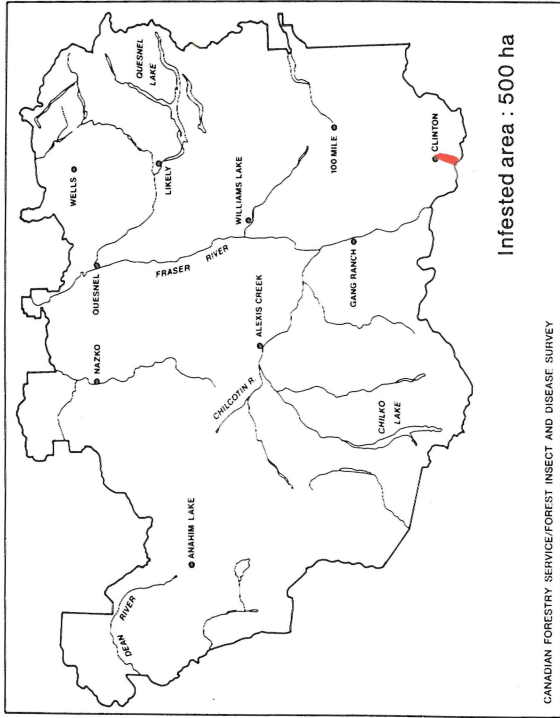


Western spruce budworm, 1986

**DOUGLAS-FIR TUSSOCK MOTH**

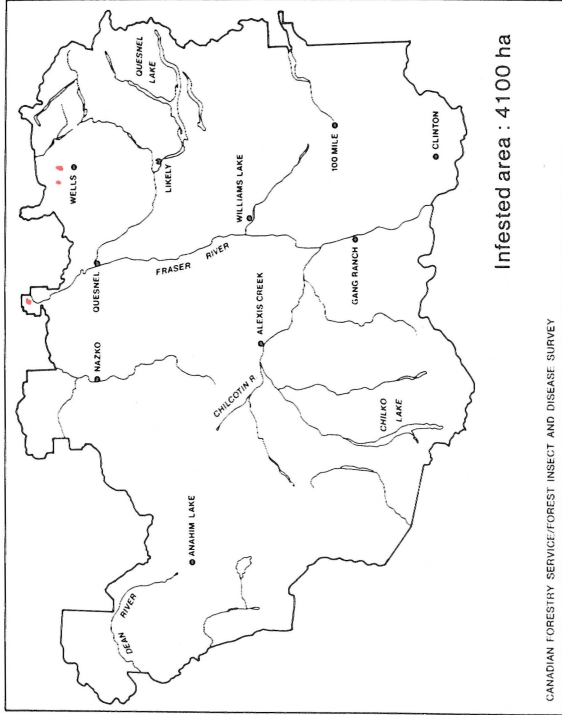
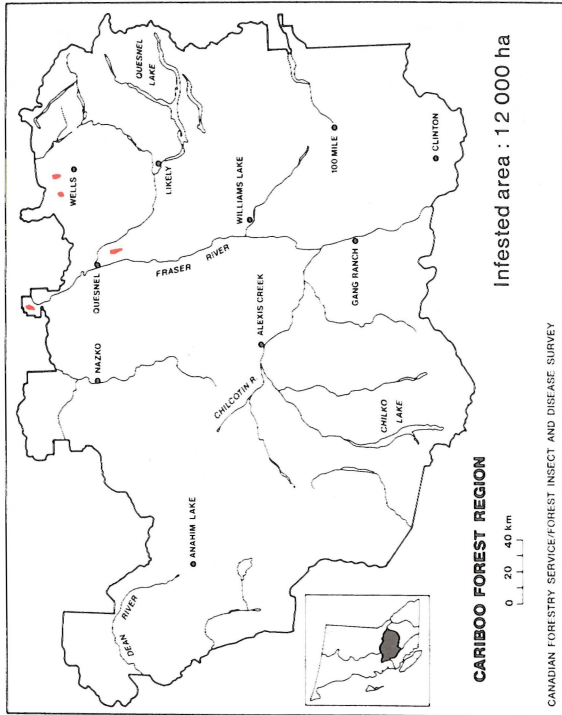


Douglas-fir tussock moth, 1948

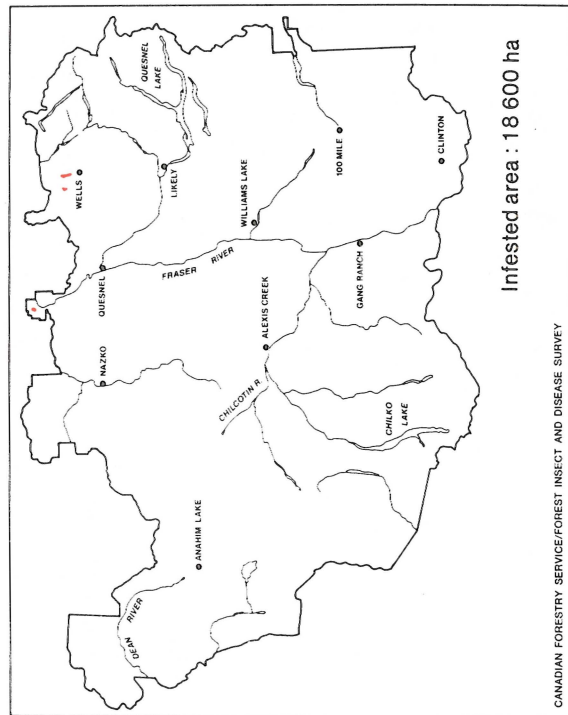


Douglas-fir tussock moth, 1981-83

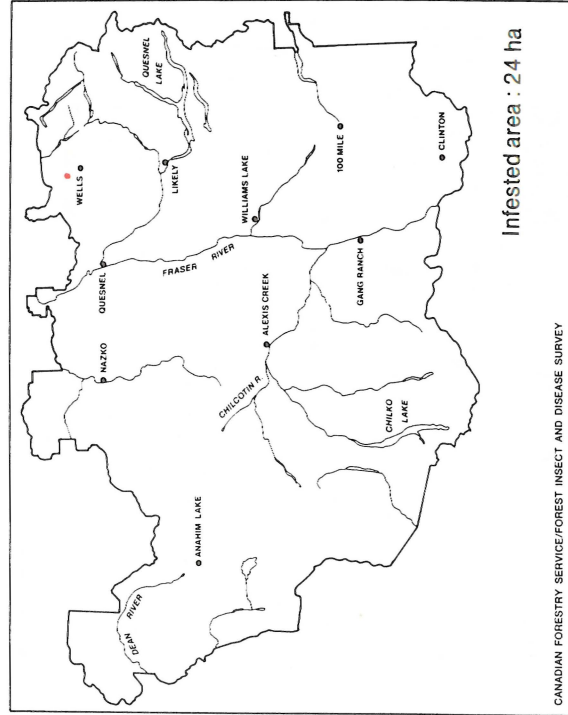
**SPRUCE BEETLE**



Spruce beetle, 1964

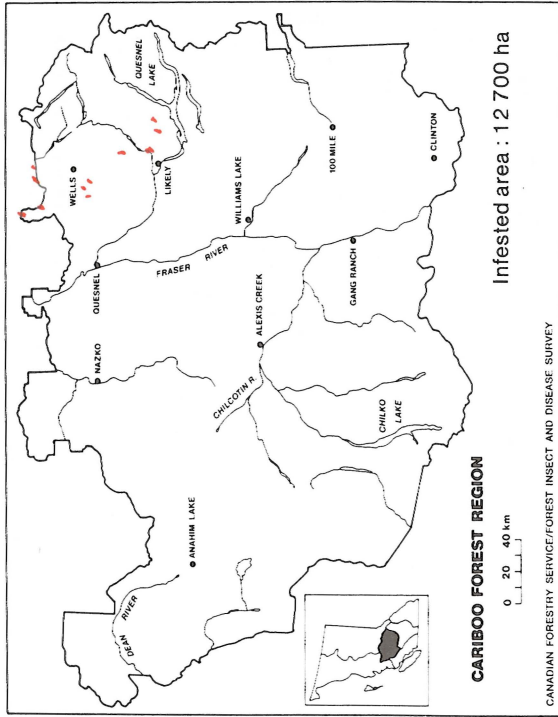


Spruce beetle, 1963

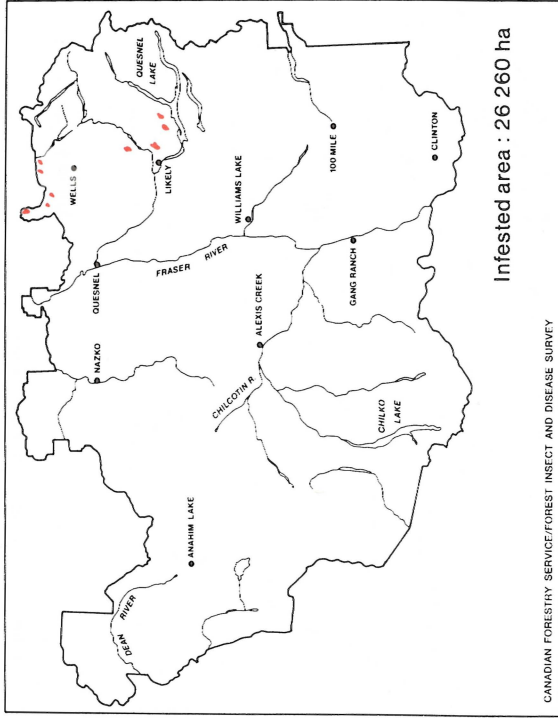


Spruce beetle, 1966

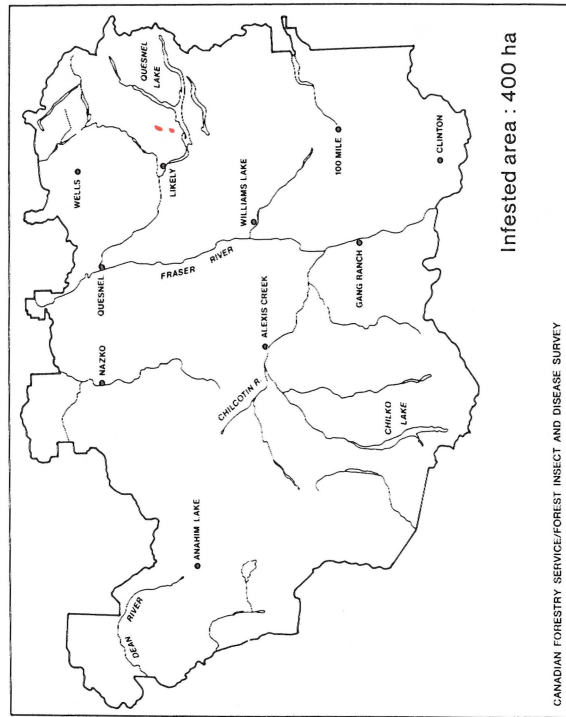
Spruce beetle, 1965



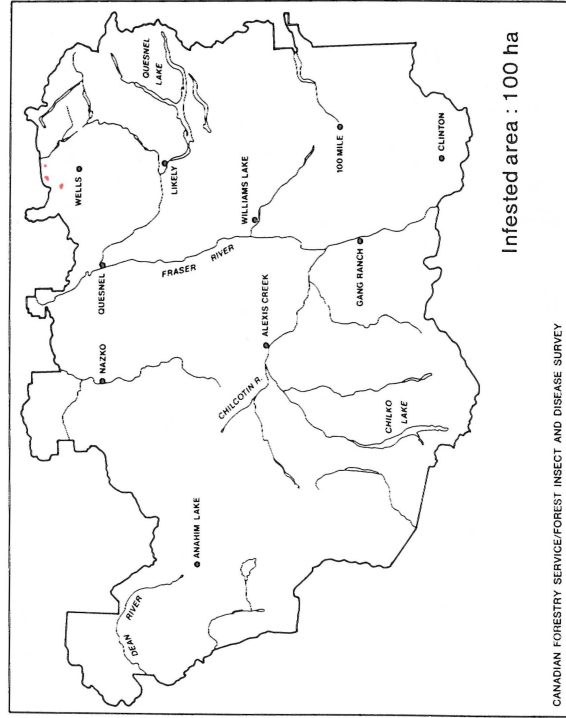
Spruce beetle, 1969



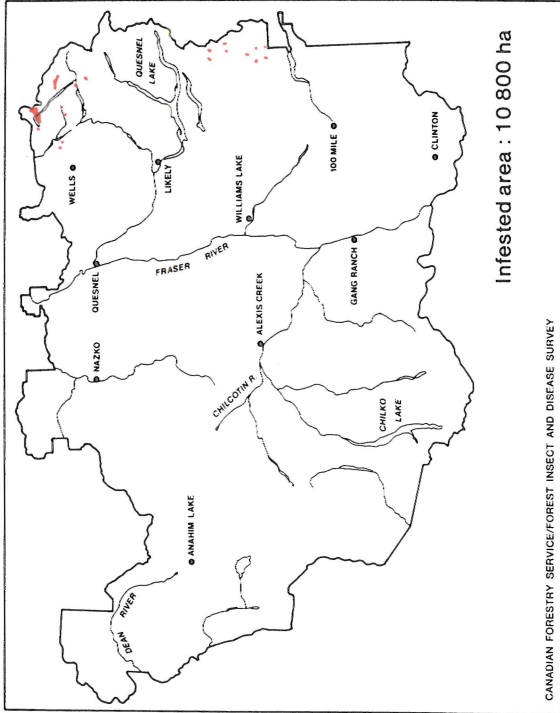
Spruce beetle, 1970



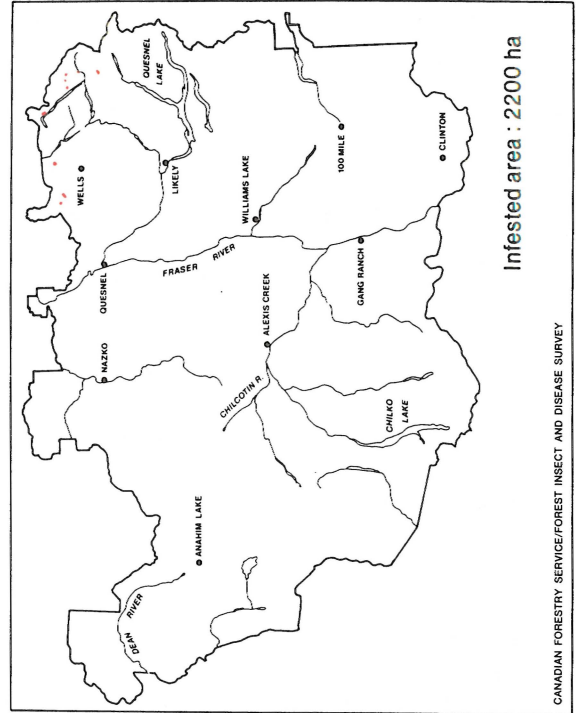
Spruce beetle, 1971



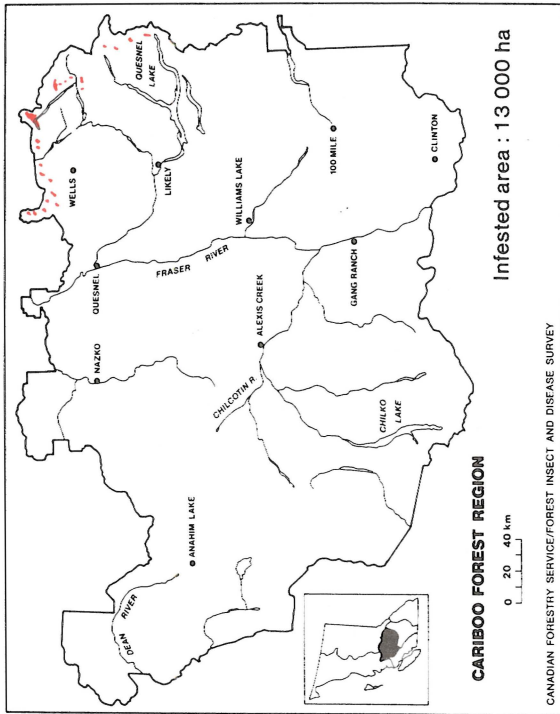
Spruce beetle, 1980



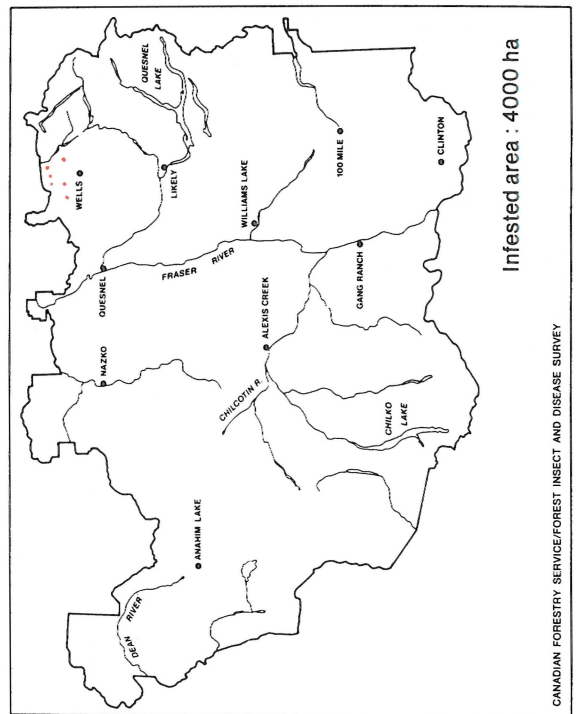
Spruce beetle, 1982



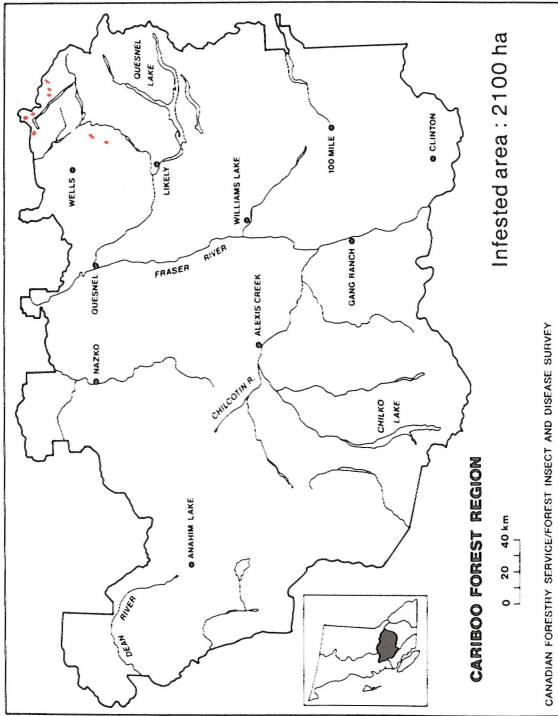
Spruce beetle, 1984



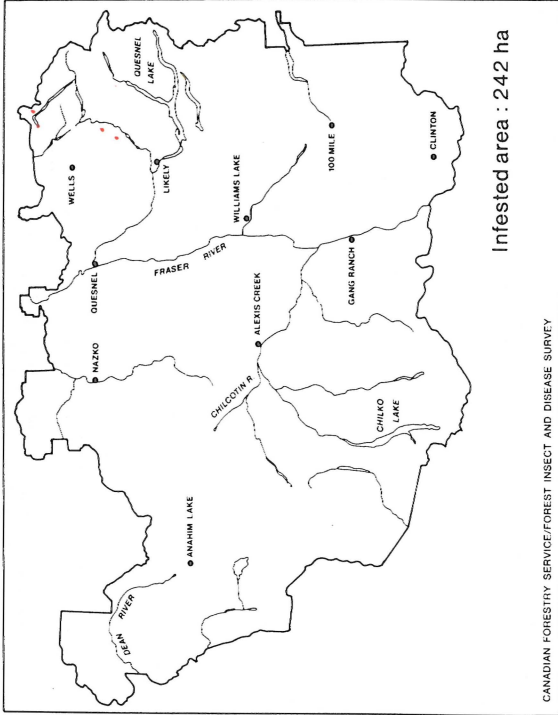
Spruce beetle, 1981



Spruce beetle, 1983

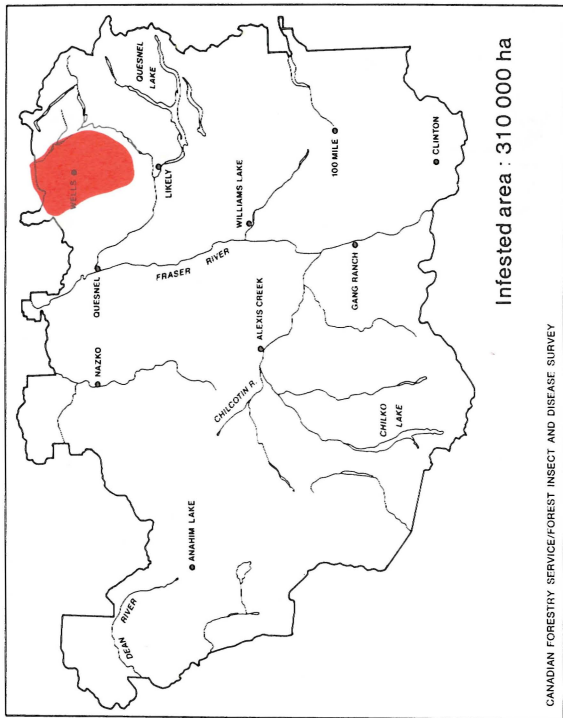
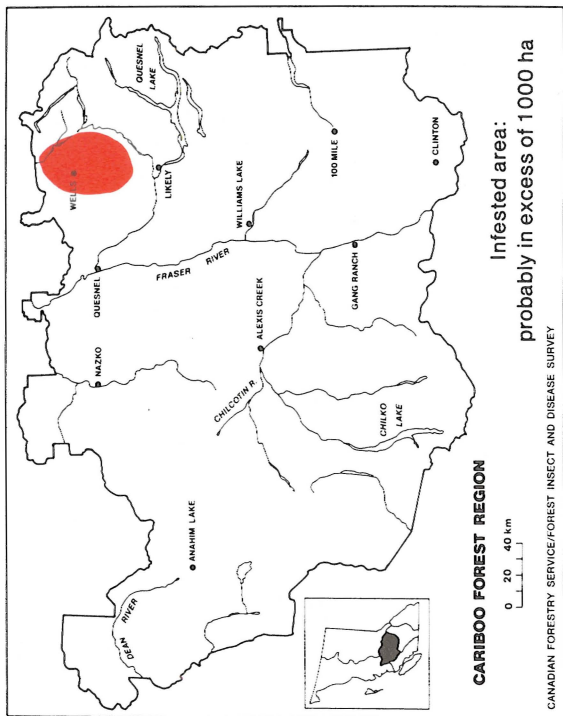


Spruce beetle, 1985

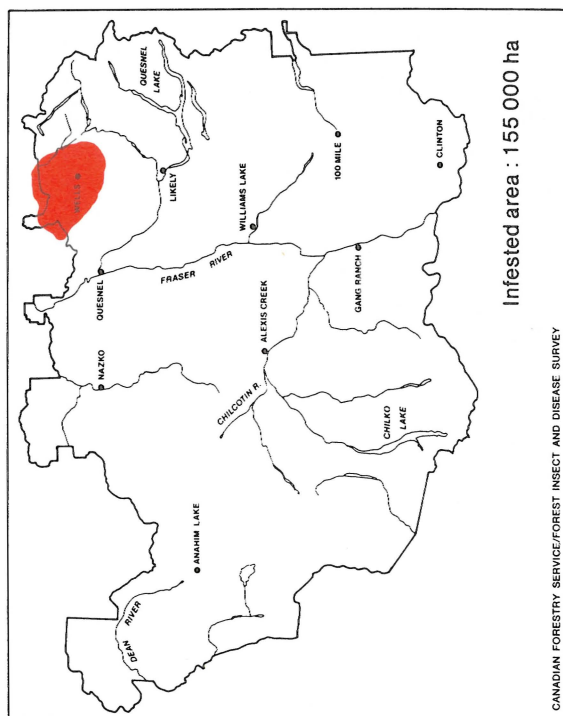


Spruce beetle, 1986

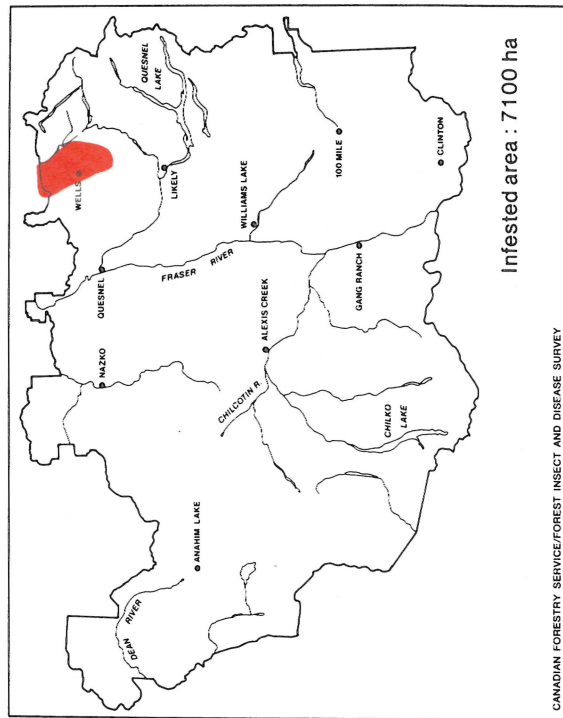
**TWO-YEAR-CYCLE SPRUCE BUDWORM**



Two-year-cycle spruce budworm, 1921-26

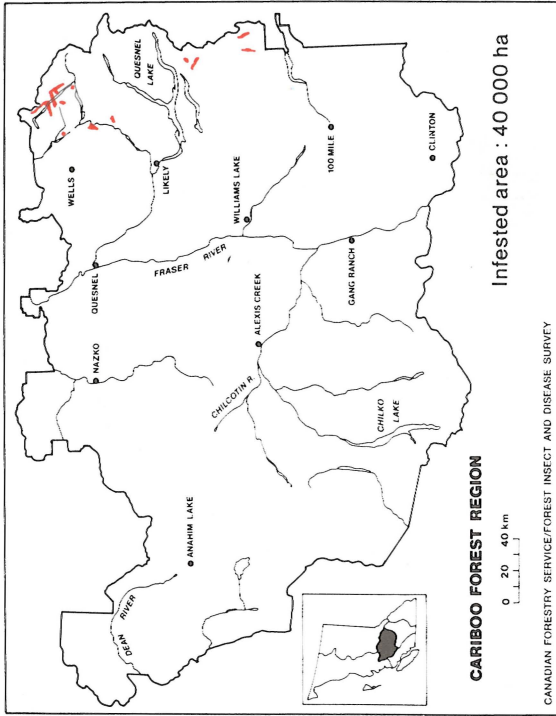


Two-year-cycle spruce budworm, 1929-32

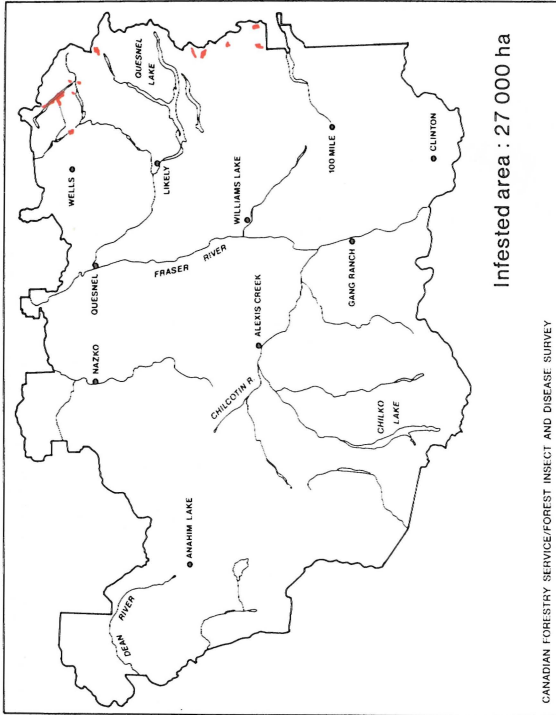


Two-year-cycle spruce budworm, 1938-40

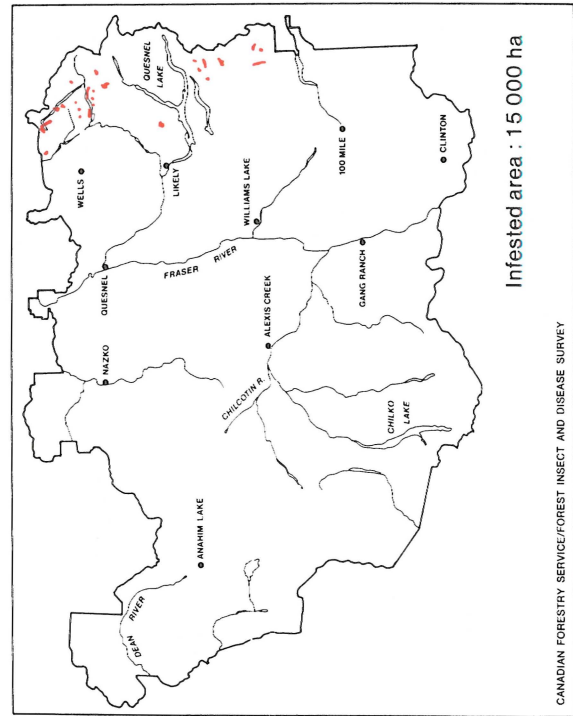




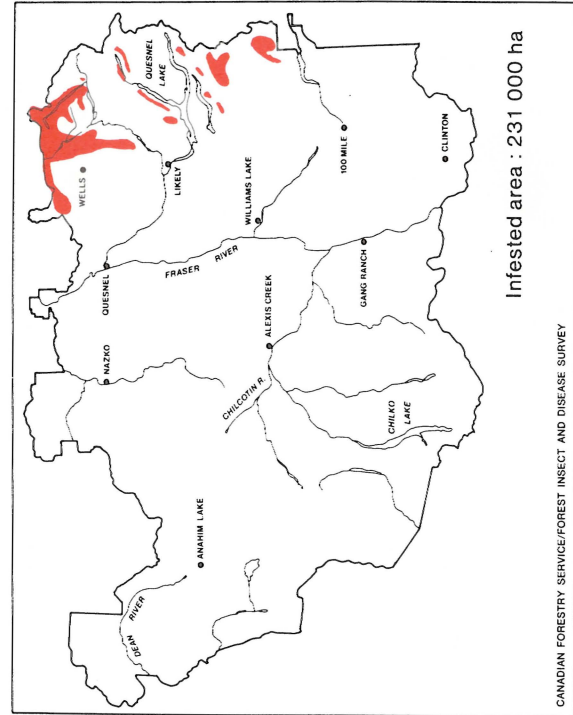
Two-year-cycle spruce budworm, 1974



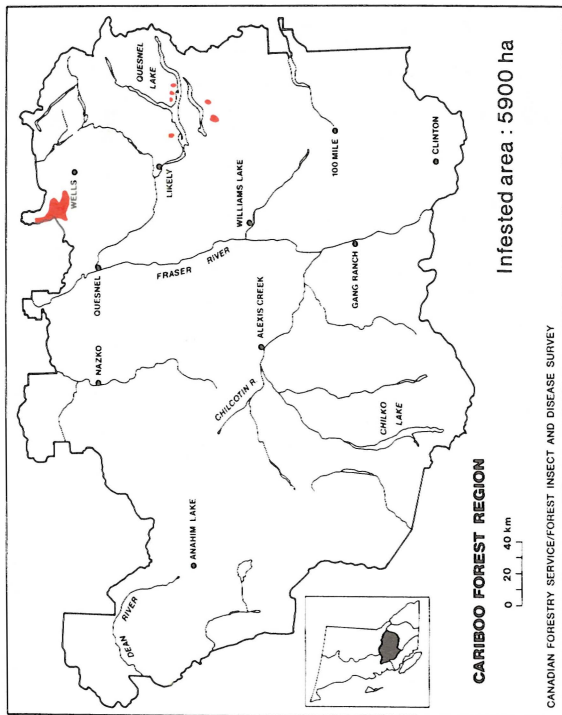
Two-year-cycle spruce budworm, 1976



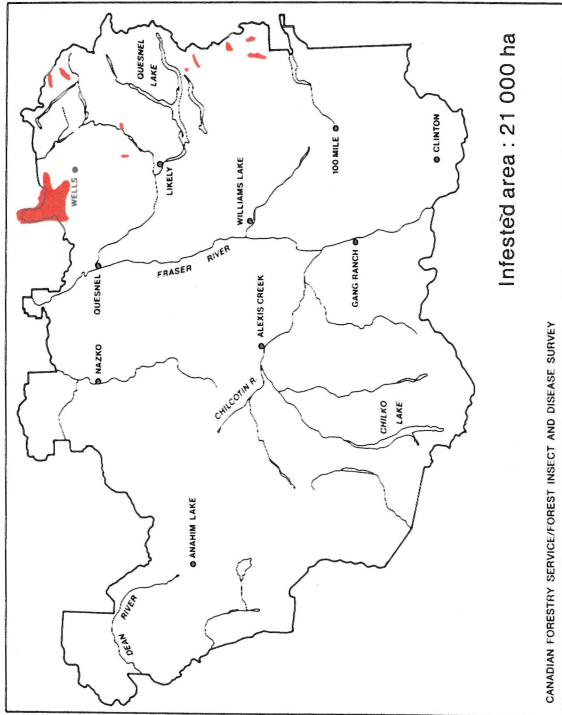
Two-year-cycle spruce budworm, 1978



Two-year-cycle spruce budworm, 1980

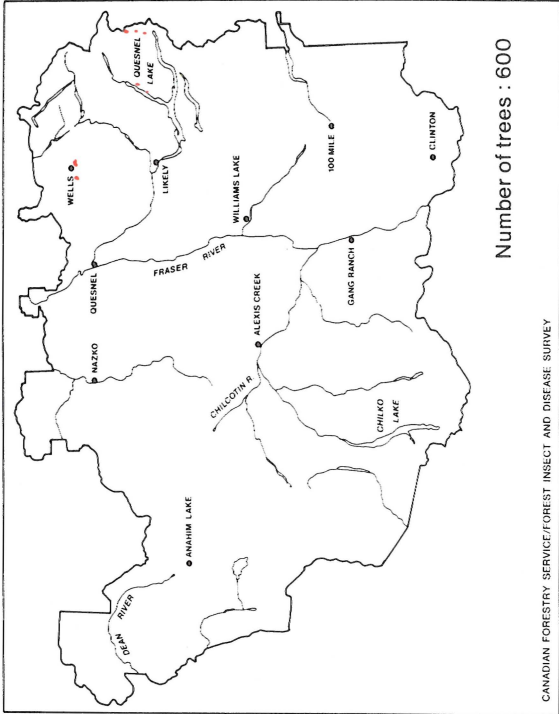
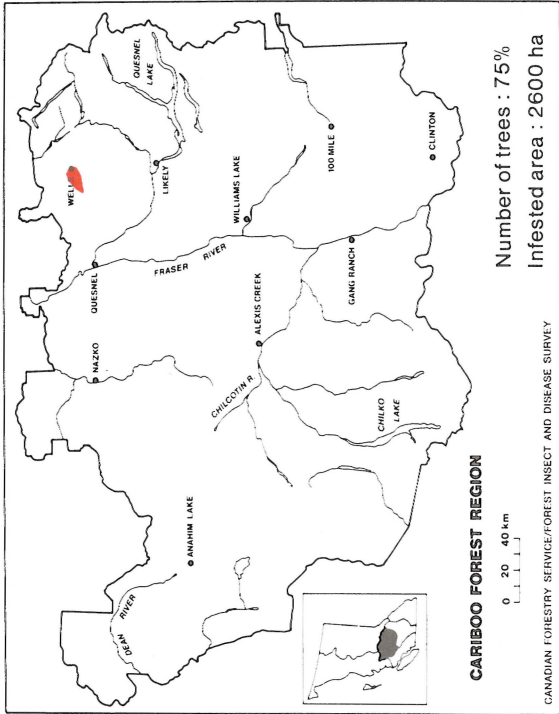


Two-year-cycle spruce budworm, 1985



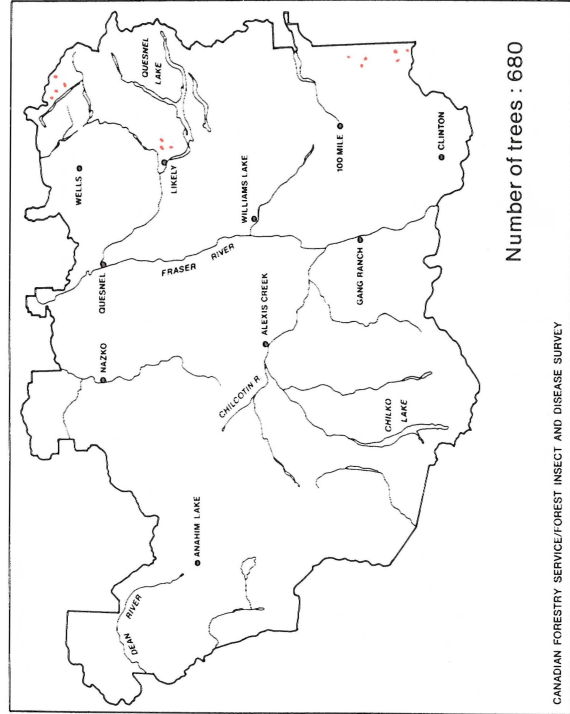
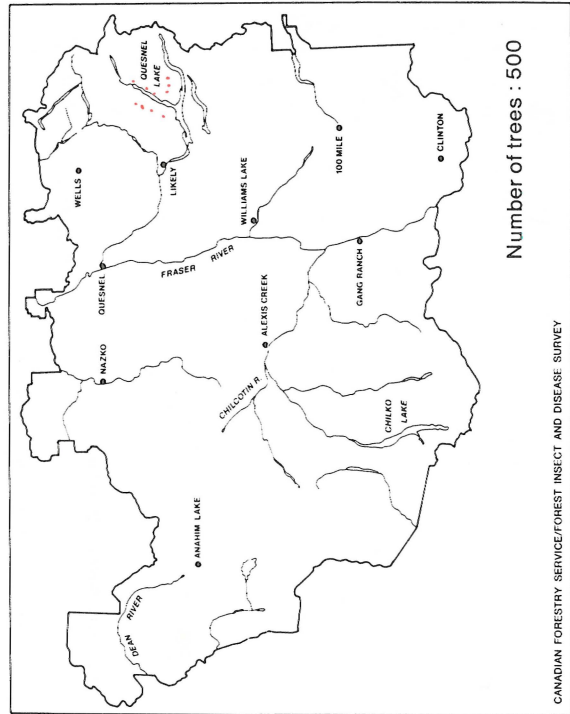
Two-year-cycle spruce budworm, 1986

**BALSAM BARK BEETLE**



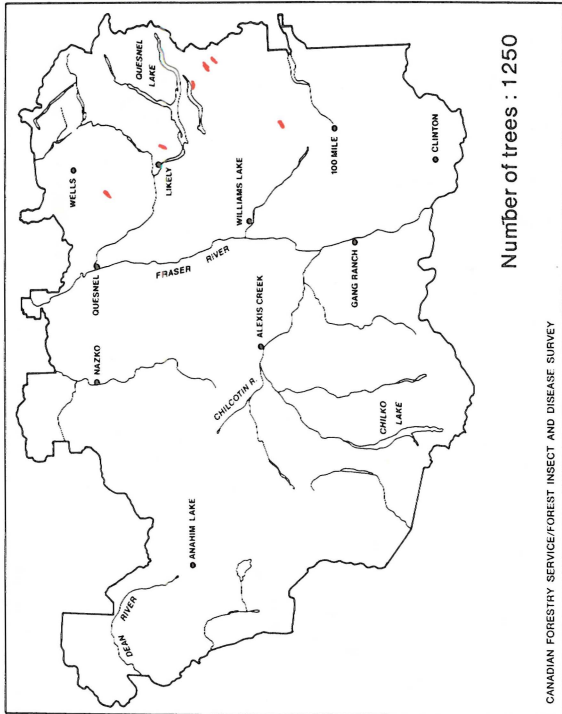
Balsam bark beetle, 1923-32

Balsam bark beetle, 1969

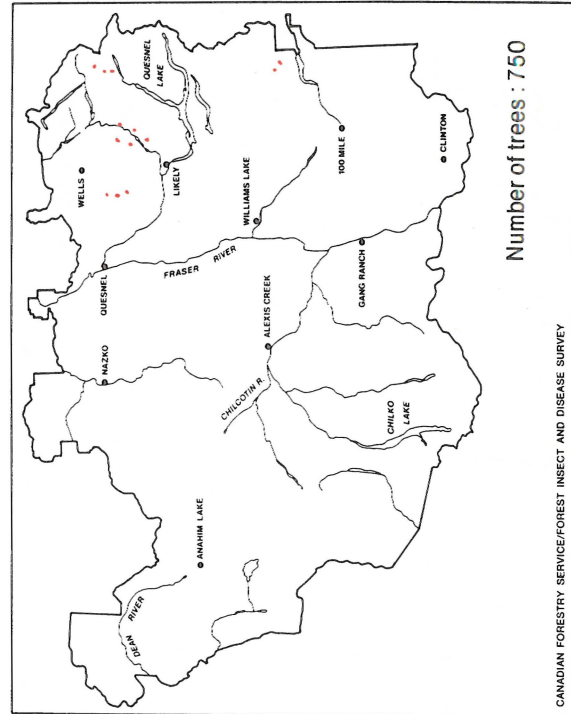


Balsam bark beetle, 1970-71

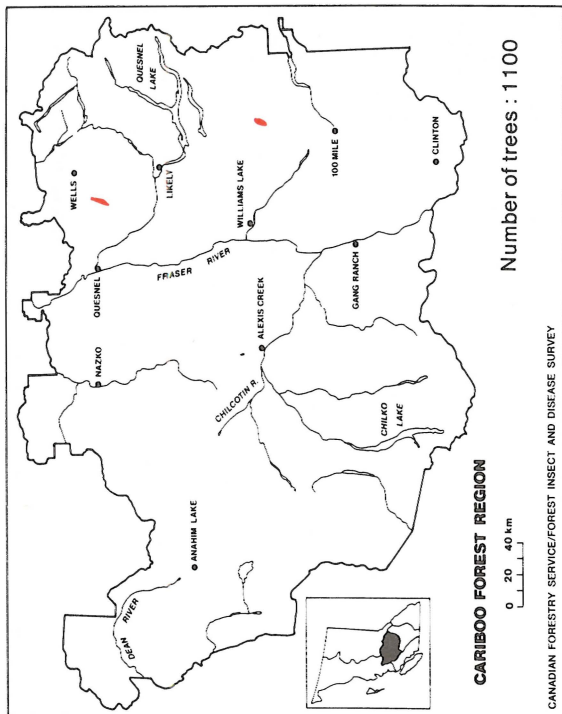
Balsam bark beetle, 1972



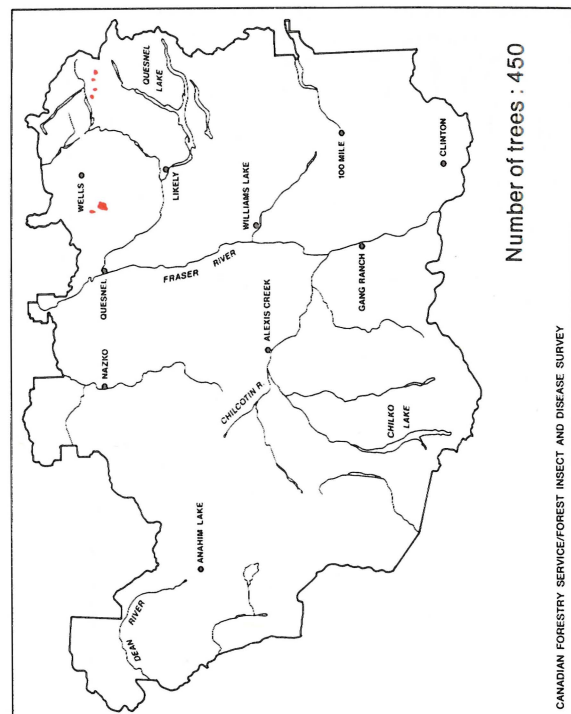
Balsam bark beetles, 1975



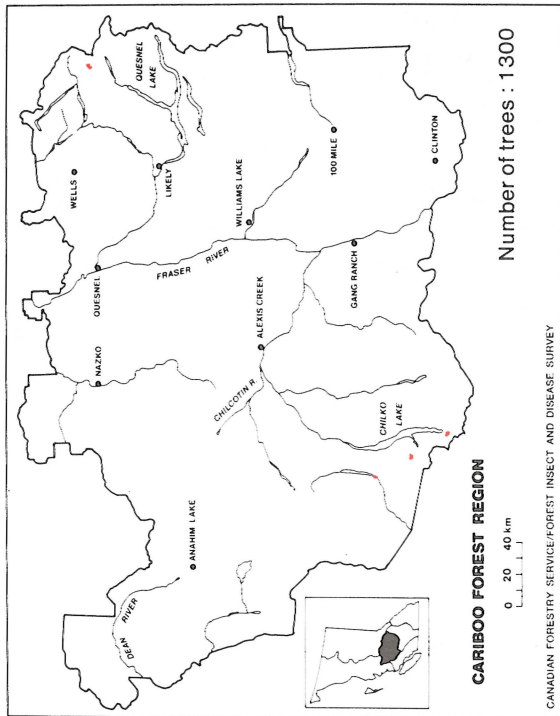
Balsam bark beetles, 1977



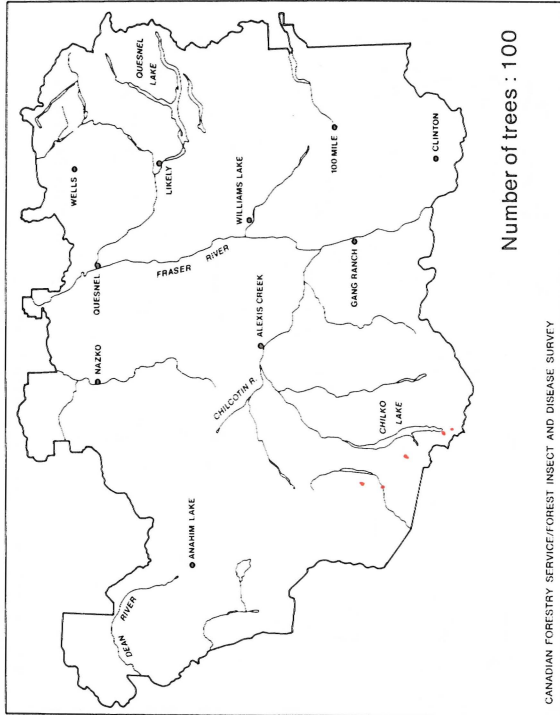
Balsam bark beetles, 1974



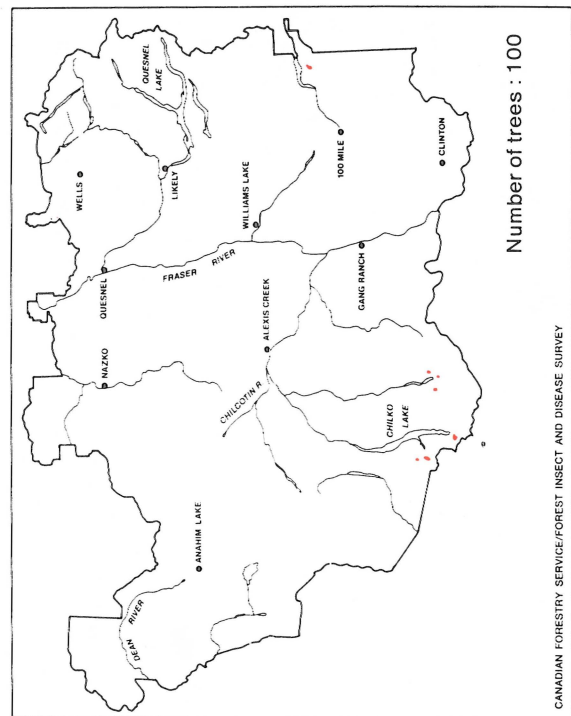
Balsam bark beetles, 1976



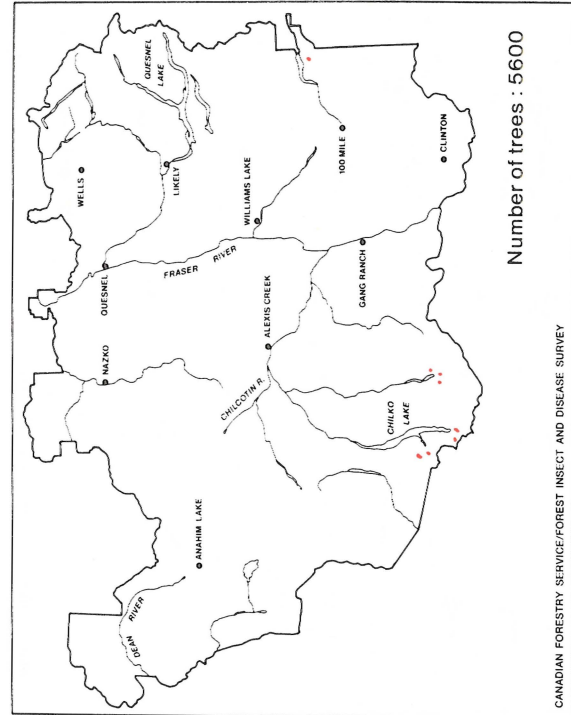
Balsam bark beetles, 1978



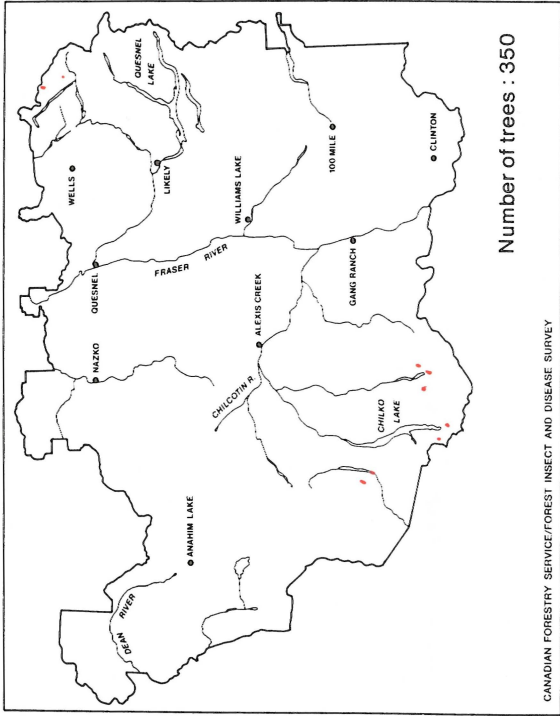
Balsam bark beetles, 1979



Balsam bark beetles, 1981

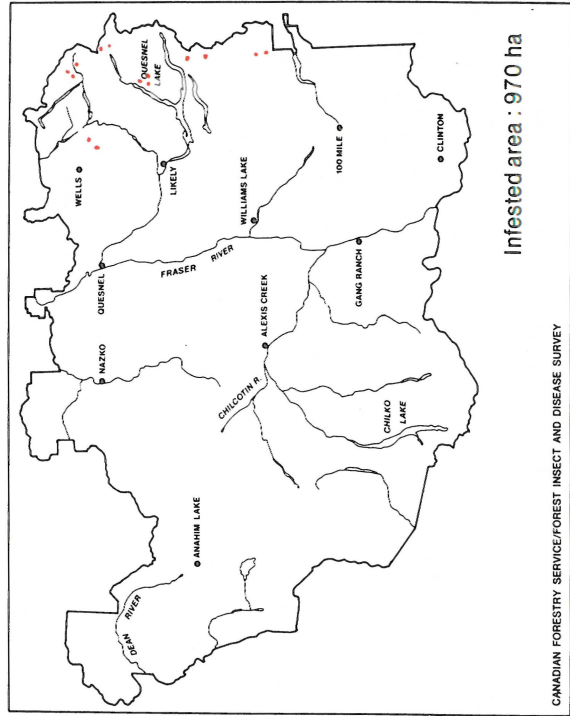


Balsam bark beetles, 1982



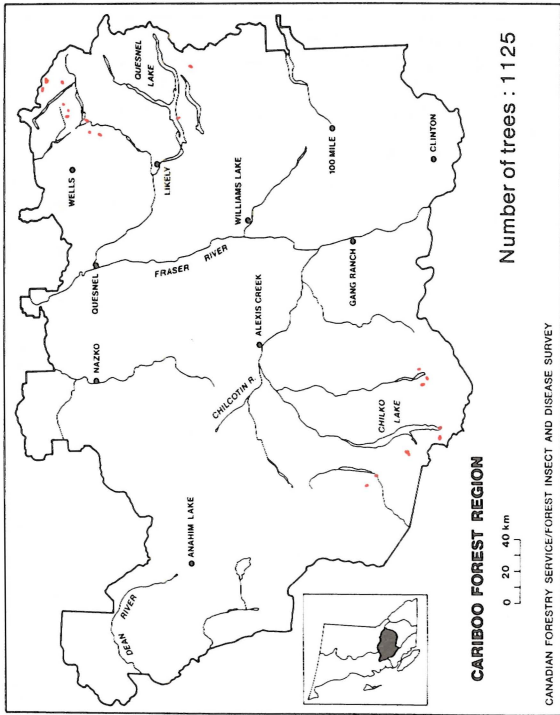
CANADIAN FORESTRY SERVICE/FOREST INSECT AND DISEASE SURVEY

Balsam bark beetle, 1984



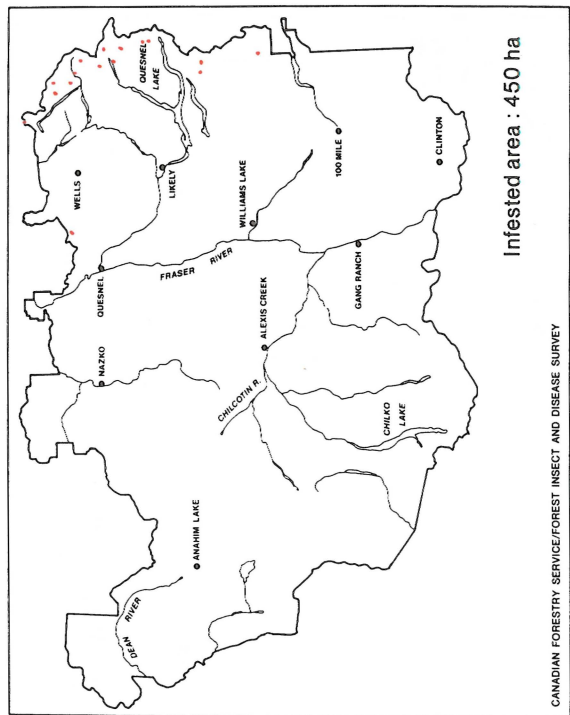
CANADIAN FORESTRY SERVICE/FOREST INSECT AND DISEASE SURVEY

Balsam bark beetle, 1986



CANADIAN FORESTRY SERVICE/FOREST INSECT AND DISEASE SURVEY

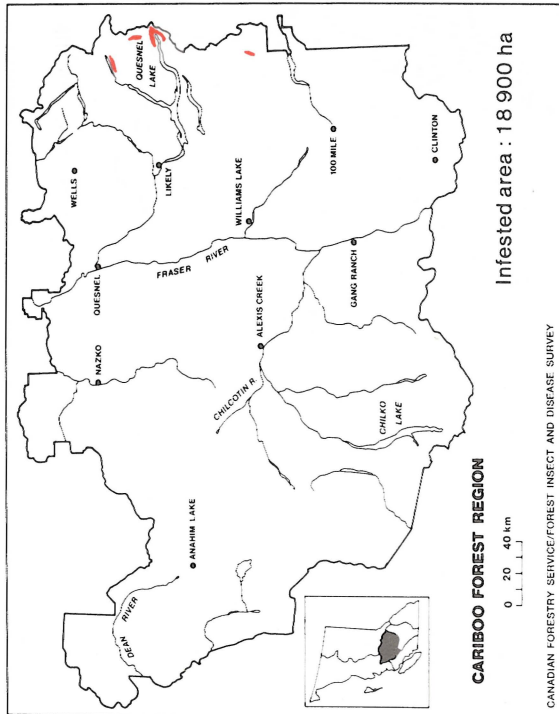
Balsam bark beetle, 1983



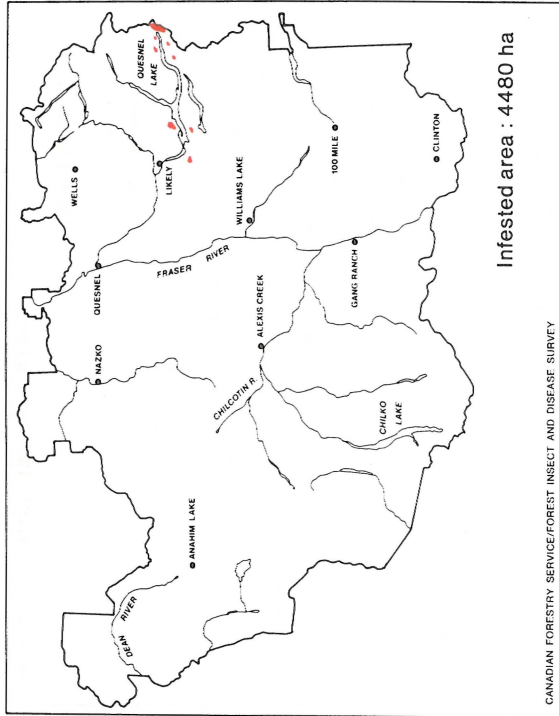
CANADIAN FORESTRY SERVICE/FOREST INSECT AND DISEASE SURVEY

Balsam bark beetle, 1985

**WESTERN BLACKHEADED BUDWORM**

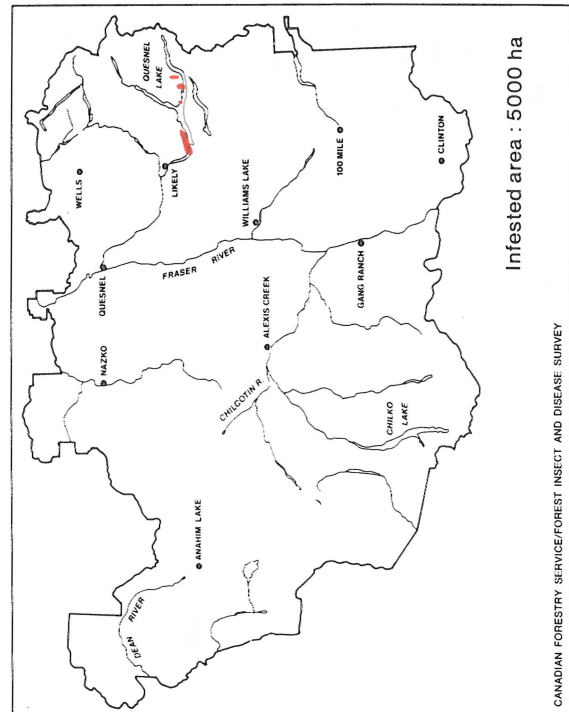


Western blackheaded budworm, 1966-67



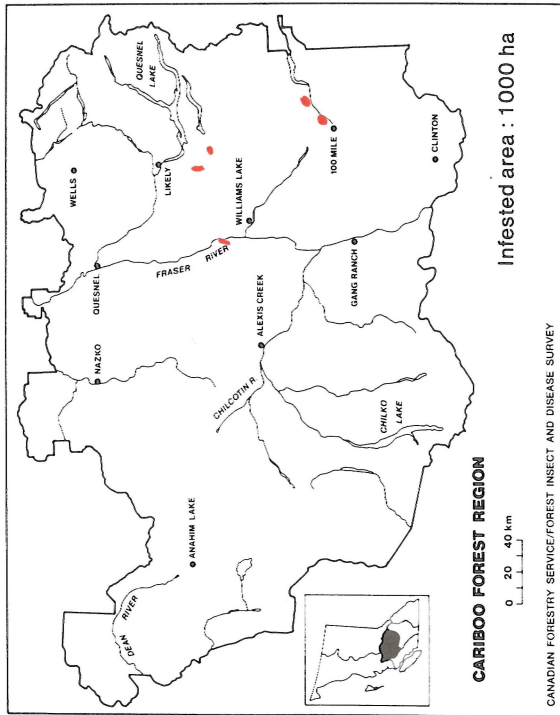
Western blackheaded budworm, 1985

**WESTERN HEMLOCK LOOPER**

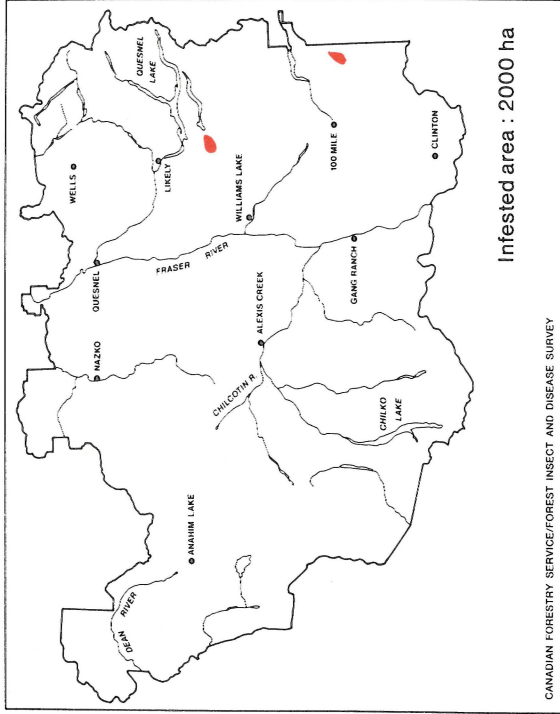


Western hemlock looper, 1983-84

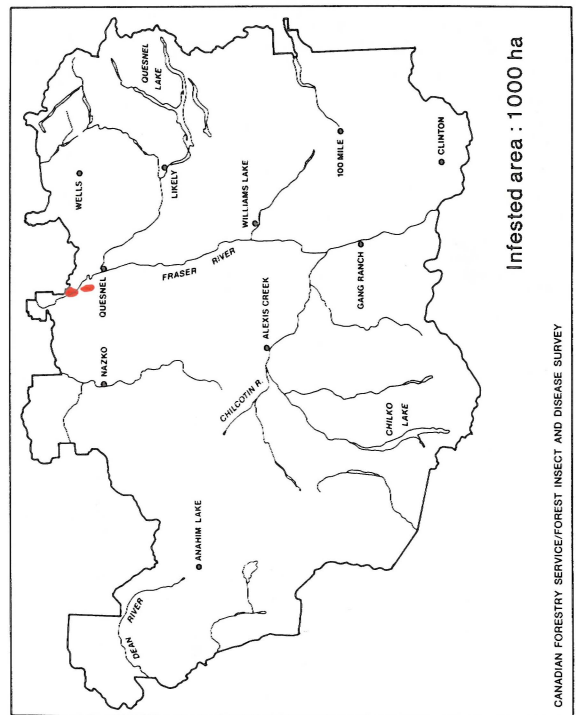
# FOREST TENT CATERPILLAR



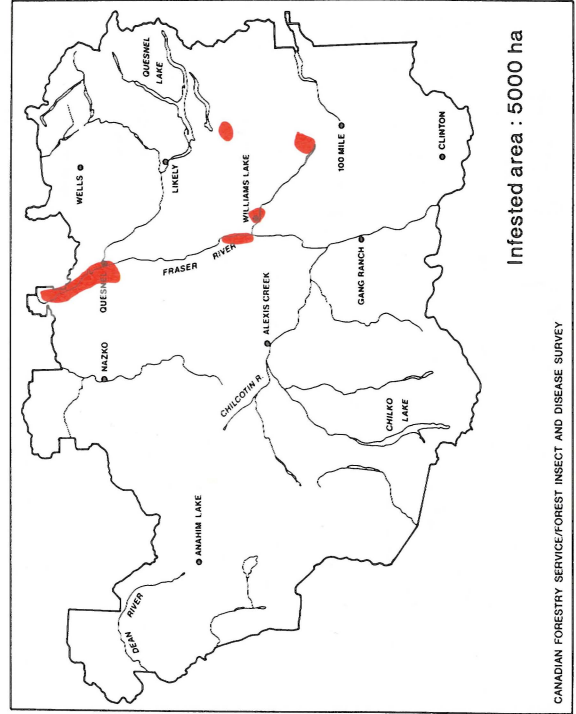
Forest tent caterpillar, 1937



Forest tent caterpillar, 1941-43

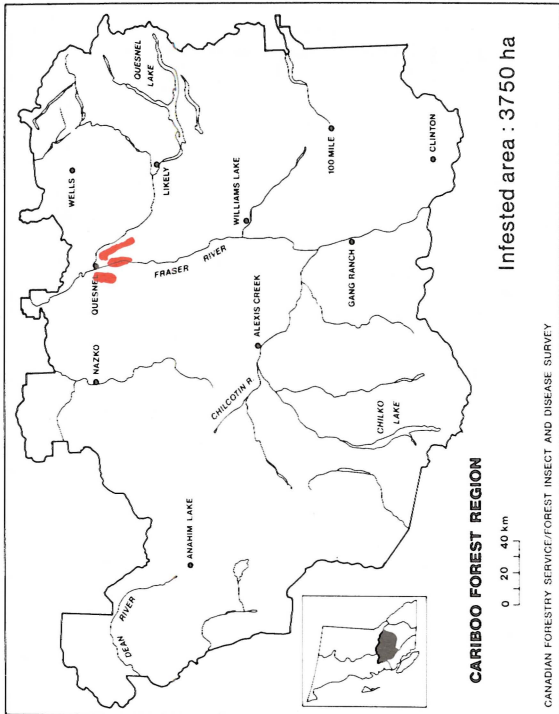


Forest tent caterpillar, 1949-50

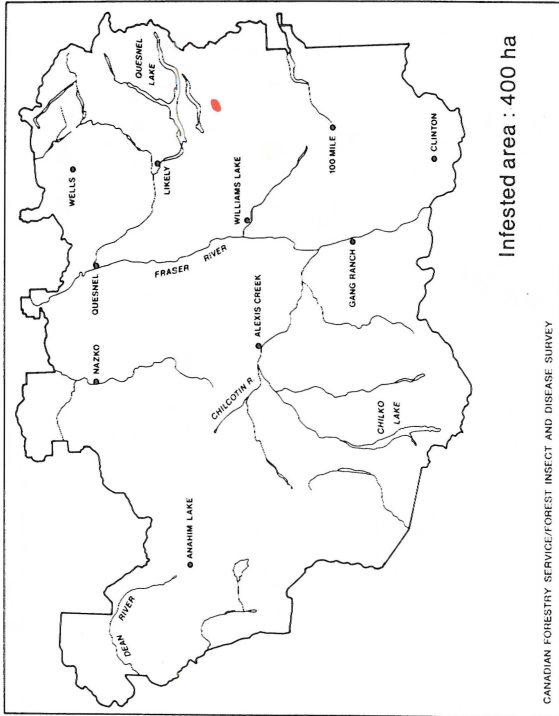


Forest tent caterpillar, 1951-54





Forest tent caterpillar, 1972-73



Forest tent caterpillar, 1983-84