



LIBRARY
PACIFIC FOREST RESEARCH CENTRE
506 WEST BURNSIDE ROAD
VICTORIA, B.C.

Library

Canada
PFRC
Pest rept
1973
Sept. 10

FOREST INSECT AND DISEASE SURVEY
PEST REPORT

Pacific Forest Research Centre • Canadian Forestry Service • Victoria

September 10, 1973.

ONE-YEAR-CYCLE SPRUCE BUDWORM INFESTATION IN THE
LIARD HOT SPRINGS - FIRESIDE REGION, PRINCE GEORGE FOREST DISTRICT

Colin S. Wood

High larval populations continue to cause moderate to severe defoliation of white spruce forests over approximately 30,000 acres along the Alaska Highway from mile 495 to mile 540.

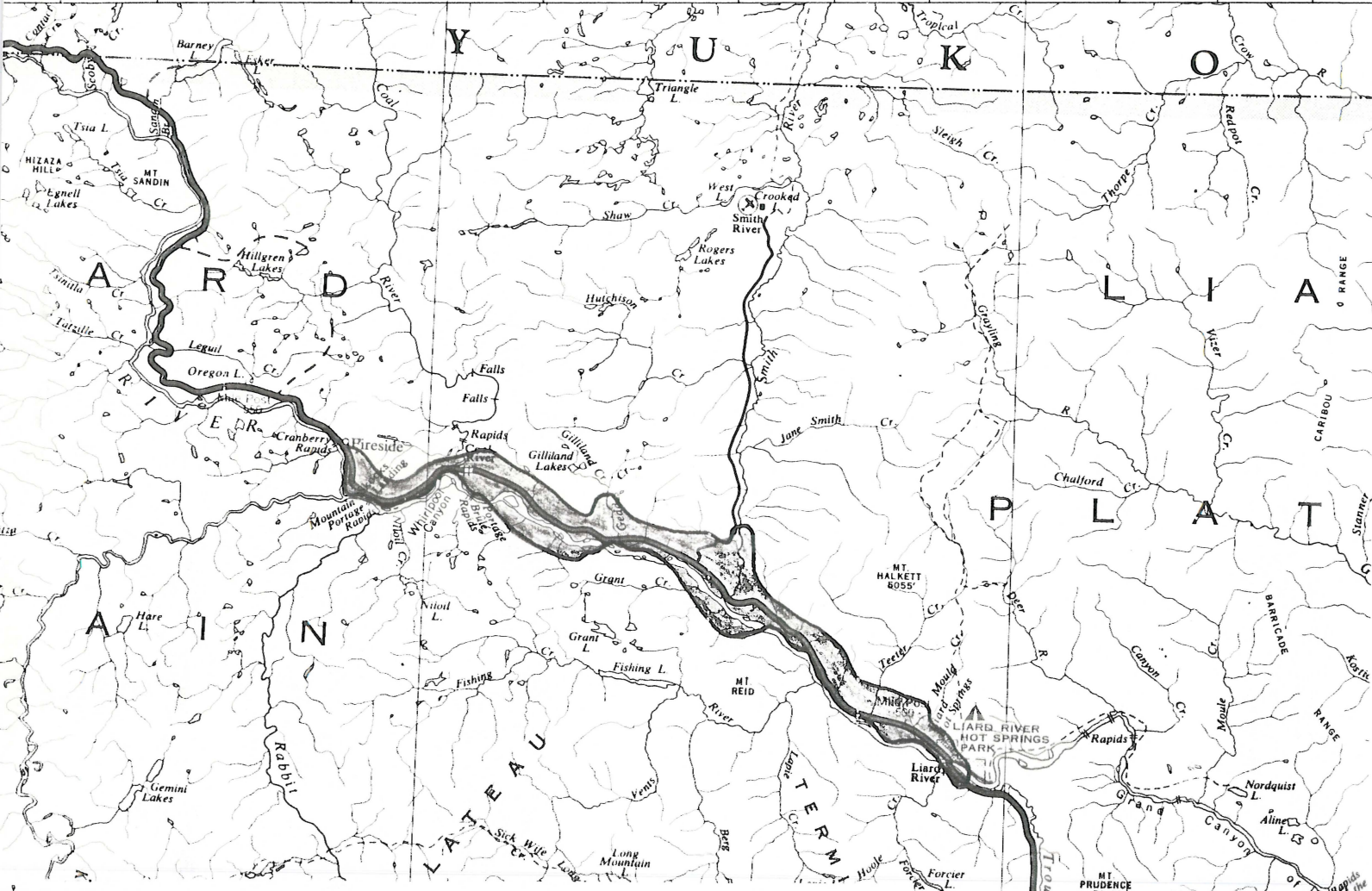
Defoliation has occurred annually since 1957 when the infestation was first recorded, and although populations have fluctuated annually, the impact of continuous defoliation has resulted in top-kill and significant growth reduction of mature spruce, particularly in the Smith River Falls area.

Defoliation of 1973 white spruce was up to 100%.
Eastern larch was moderately defoliated at scattered locations.

Assessment of 1973 larval populations indicates that moderate defoliation will occur in 1974 throughout the current infestation Area.

127°

126°



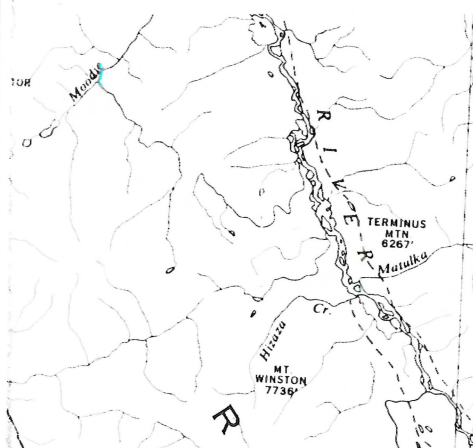
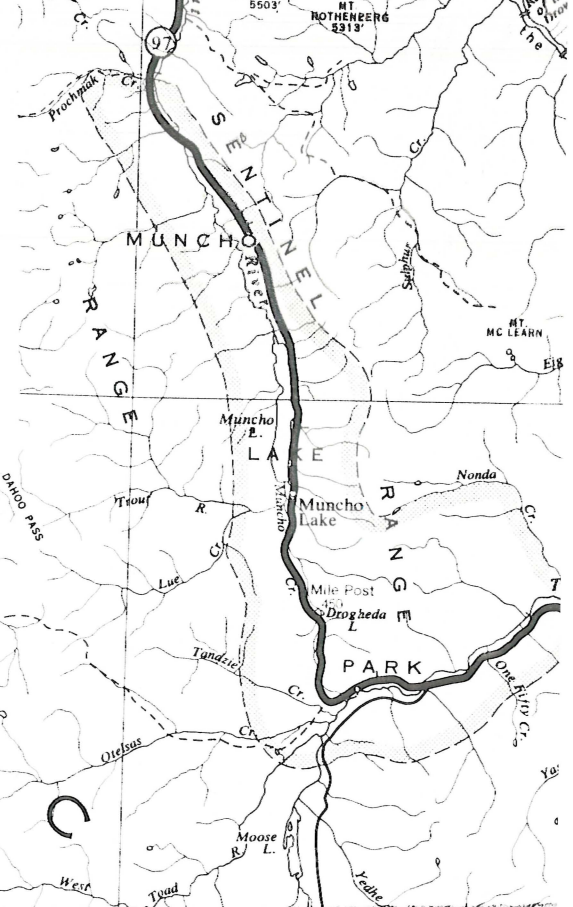
1973

SPRUCE BUDWORM INFESTATION

MED - HEAVY



SCALE - 10 miles to 1 inch



ESKONA MTN.

ESKONA MTN.