

FIDS Pest Report 92-20

AUGUST 1992

**DOUGLAS-FIR BEETLE
IN THE MILITARY BLOCK (DND)
NEAR RISKE CREEK, CARIBOO FOREST REGION**

R.D. Erickson
Forest Insect and Disease Survey

The number and area of mature Douglas-fir killed by Douglas-fir beetle, Dendroctonus pseudotsugae, in the military block (DND) near Riske Creek in the Cariboo Forest Region increased again this year to about 500 ha from 380 ha in 1991. The infestations have been increasing since 1988 when the current outbreak began in the region, and is the largest ever recorded in the block.

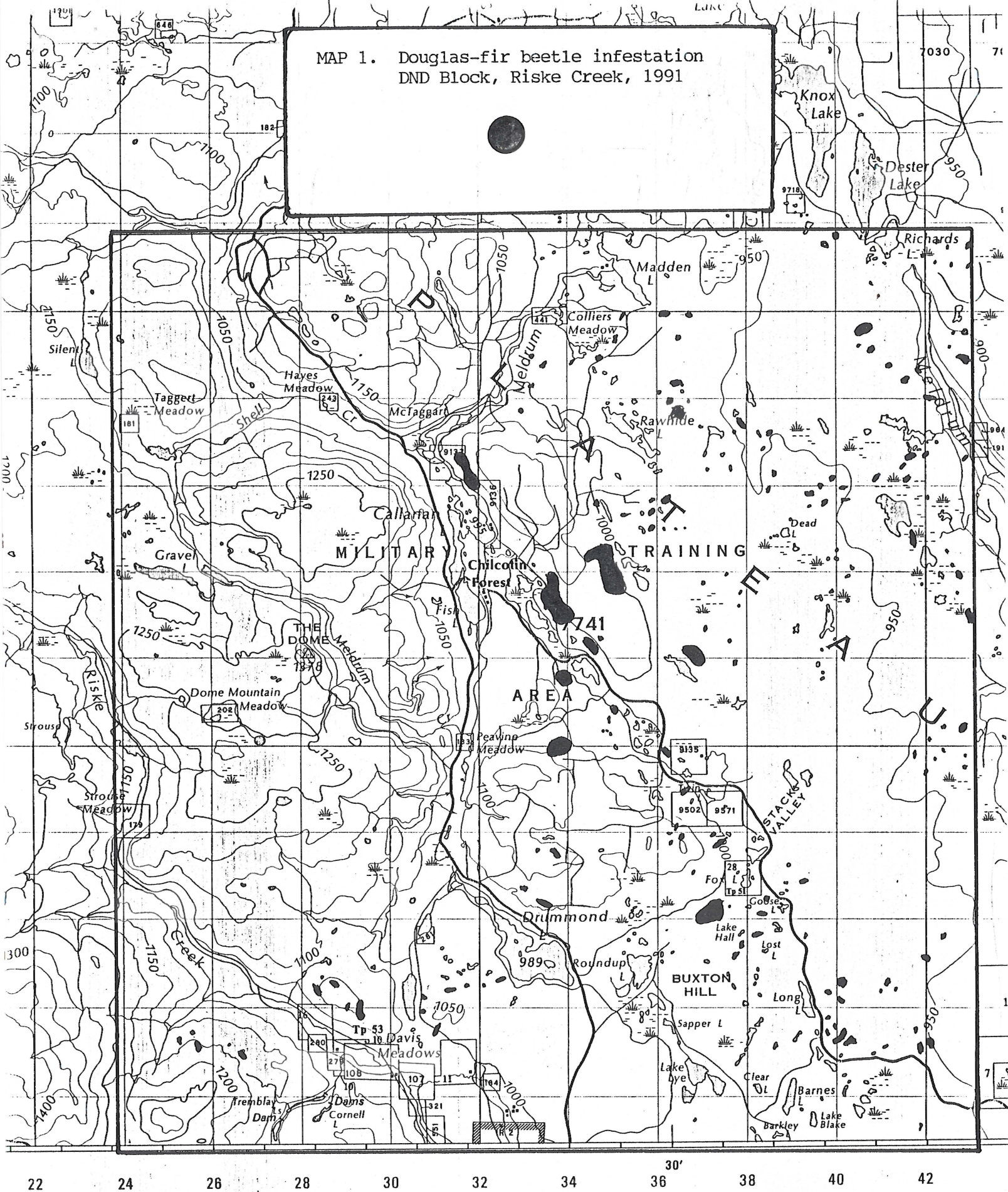
The increase is due to the coalescence of more than 200 small patches of 5-20 beetle-killed trees into larger patches of hundreds of trees. This was forecast to occur based on surveys in late 1991, when populations in the block were assessed by Forestry Canada-Forest Insect and Disease Survey (FIDS). In eight stands an average of 18% (range 3-36%) of the trees had been attack in 1991 and 22% in previous years. Only 60% (range 42-84%) of the trees were healthy. The intensity of the infestations is greater within the DND block than nearby where some trap tree deployment and salvage logging has been done.

Color (70mm) aerial oblique photographs and videotape showing tree mortality were taken July 30th and are being processed. The 1992 aerial survey is in progress and will be completed early in September.

Douglas-fir beetle attacks healthy trees in early and late summer so assessments are best done in September. Surveys to determine the number and extent of 1992 beetle-attacked trees and to forecast 1993 populations are scheduled at several locations within the DND block.

* * * * *

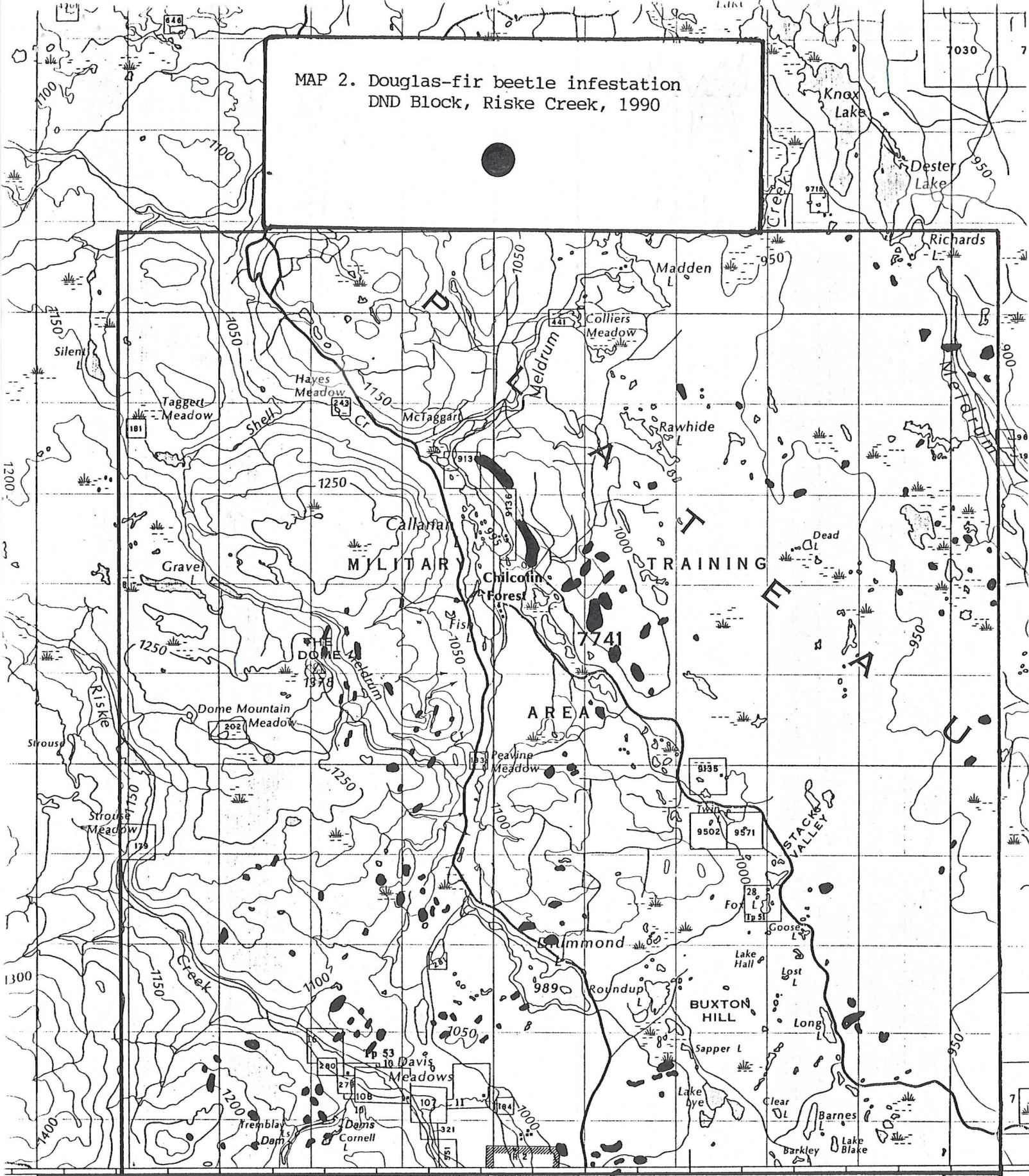
MAP 1. Douglas-fir beetle infestation
DND Block, Riske Creek, 1991



WILLIAMS LAKE

CARIBOO LAND DISTRICT

MAP 2. Douglas-fir beetle infestation
 DND Block, Riske Creek, 1990



22 24 26 28 30 32 34 36 38 40 42

WILLIAMS LAKE

CARIBOO LAND DISTRICT