



Diseases

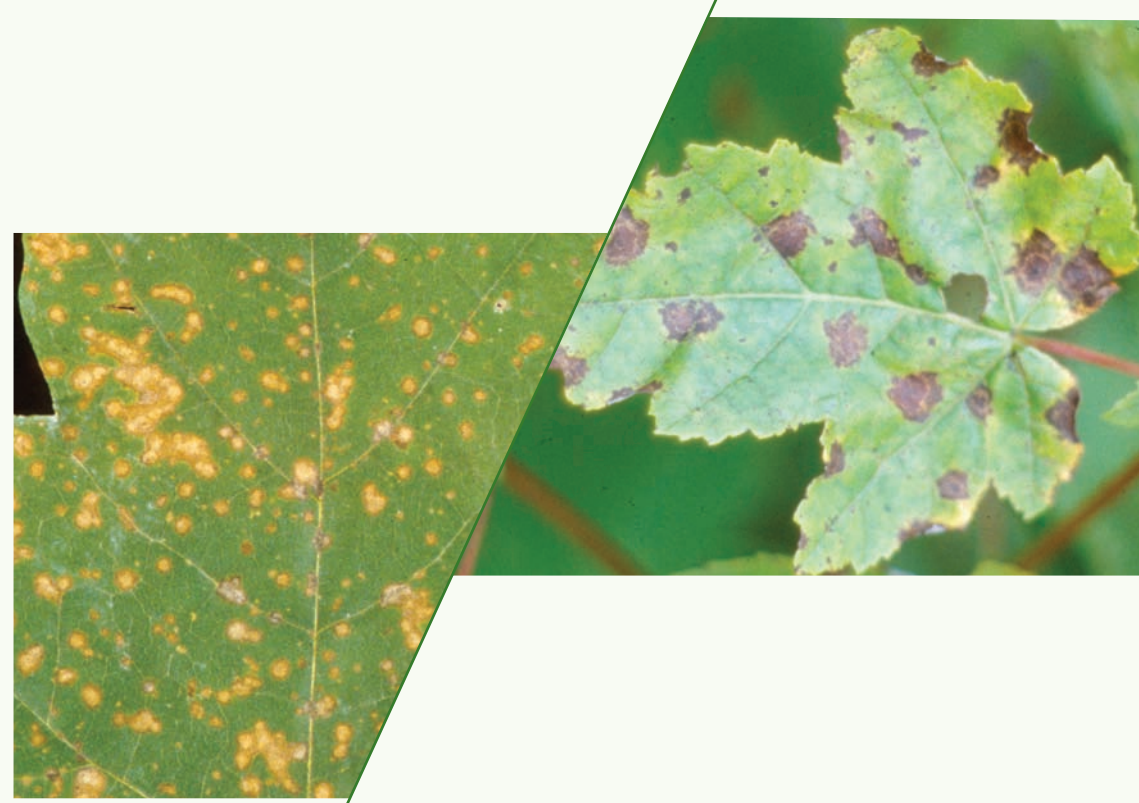
Sugar maple diseases range from conspicuous but rarely significant leaf diseases to inconspicuous but **often** significant and sometimes lethal internal stem and root diseases. Many diseases go unnoticed until the damage becomes significant and since little can be done to halt their progress, it is important to prevent or reduce the conditions that lead to tree diseases. Practically all diseases **caused by fungi** whose consequences are very important begin with an injury. Preventing injuries, especially to roots and lower stems, must be at the centre of sugarbush management activities.

LEAF DISEASES

ANTHRACNOSE



LEAF SPOTS



TAR SPOTS



CANKERS AND ROTS

NECTRIA CANKER



EUTYPELLA CANKER



STEM DECAYS



ARMILLARIA ROOT ROT



*A healthy forest
A strong forest sector
Knowledge at your fingertips*

