



Fisheries
and Environment
Canada

Forestry
Service

Pêches
et Environnement
Canada

Service
des forêts

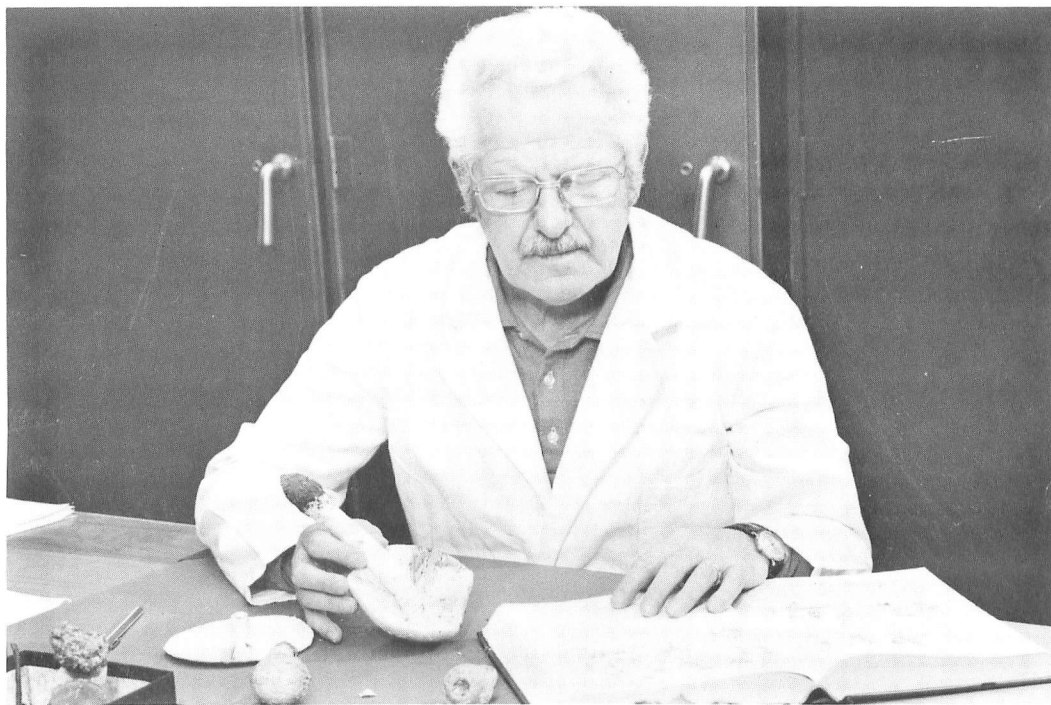
GREAT LAKES FOREST RESEARCH CENTRE
P.O. BOX 490
SAULT STE. MARIE, ONTARIO
P6A 5M7

THE HERBARIUM AT THE GREAT LAKES FOREST RESEARCH CENTRE

The completion of the Great Lakes Forest Research Centre in Sault Ste. Marie, Ontario has afforded the opportunity to centralize several plant collections in one herbarium, and to organize the operations and procedures of this facility.

At present the herbarium consists of collections of over 12,000 disease-causing organisms (mostly fungi), 5,000 vascular plants, and 400 mosses and lichens stored in upright cabinets. Some of the vascular plants come from project or personal collections made by a number of staff members at the Centre; others were obtained through the Botanical Society of Sault Ste. Marie from the personal collection of the late S.T.B. Losee.

A herbarium committee has been formed to plan and direct herbarium developments. The herbarium is supervised by a research scientist, who is in charge of receiving specimens, identifying them, mounting and labelling collections, and generally organizing and maintaining them. One technician is assigned to herbarium duties on a half-time basis, and Forest Insect and Disease Survey field technicians usually lend assistance in winter months.



Examining fungal specimens in the herbarium

The herbarium is an essential component of the Forest Insect and Disease Survey Unit and of other projects that include the study of vegetation, as it provides a reference collection for the identification of disease organisms and higher plants. The identification of the disease organism is prerequisite to prescribing control measures. Often, identification of the host plant aids in identification of host-specific fungi. In addition, plants are an important component of forest site type identification, regeneration and succession studies, wildlife habitat characterization, and studies of geographic distribution.

It is desired that the herbarium be used as a reference collection for identification purposes, and as a depository for voucher collections, not only by researchers and staff of the Great Lakes Forest Research Centre but also by forest managers, arboriculturists, college and university staff and students, and naturalists. Anyone wishing to obtain further information about the herbarium should contact the Centre's Information Office.

SUGGESTED READING

GLEASON, H.A. 1968. The new Britton and Brown illustrated flora of the northeastern United States and adjacent Canada. Hafner Publ. Co., New York. 3 vol.

GLEASON, H.A. and A. CRONQUIST. 1963. Manual of vascular plants of northeastern United States and adjacent Canada. van Nostrand Co., Princeton, New Jersey. 810 p.

J.K. Jeglum

Copies of this leaflet can be obtained from the Centre's Information Office.

September, 1977.