



Government
of Canada

Gouvernement
du Canada

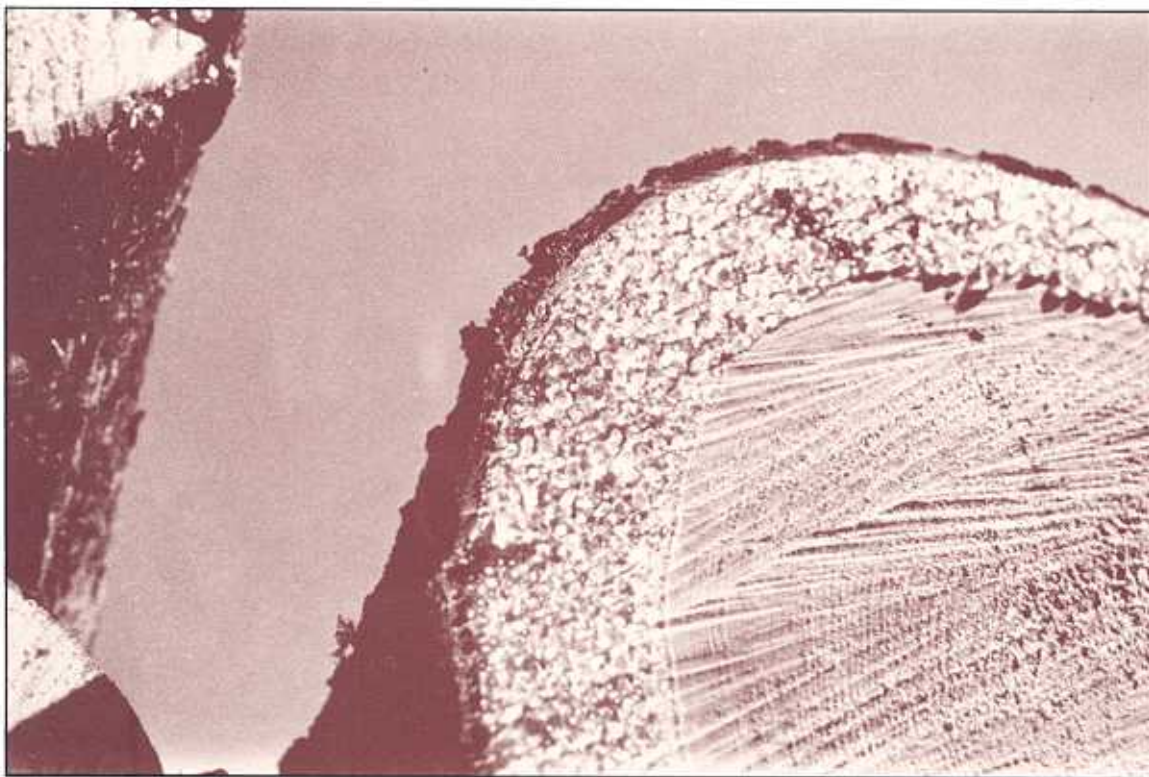
Canadian
Forestry
Service

Service
canadien des
forêts

Catalogue of Canadian Forest Inventory Publications and Manuals Catalogue des manuels et publications de l'inventaire des forêts du Canada

K. Nietmann

Information Report/
Rapport d'information PI-X-76E/F
Petawawa National Forestry Institute/
Institut forestier national de Petawawa



50

391

IS613

no. 76

C2

INSTITUT FORESTIER NATIONAL DE PETEWAWA

Le mandat de l'Institut forestier national de Petewawa, comme celui des autres établissements du Service canadien des forêts, est de promouvoir une meilleure gestion et une utilisation plus rationnelle des ressources forestières du Canada, pour le bien économique et social de tous les Canadiens. Les objectifs des activités des programmes menés à l'Institut appuient ce mandat à travers la découverte, le développement, la démonstration, l'application et le transfert des innovations. En tant qu'institut national, il doit s'attacher à des problèmes qui débordent le cadre régional ou qui nécessitent des compétences particulières de même qu'un équipement non disponible aux installations régionales du Service canadien des forêts. La plupart du temps, ses recherches sont effectuées en étroite collaboration avec le personnel des centres régionaux ou des services forestiers des provinces. Les projets de recherche et les services techniques de l'Institut sont regroupés sous six principales activités:

GÉNÉTIQUE FORESTIÈRE ET BIOTECHNOLOGIE - Ce programme encadre des projets sur la génétique forestière, la microbiologie, la micropropagation, la génétique moléculaire et la recherche sur les semences. Il comprend également les services à la clientèle et la banque de semences du Centre national de semences forestières. Ce centre existe depuis longtemps et est lié à plusieurs organismes internationaux.

SYSTÈMES D'AMÉNAGEMENT FORESTIER - Ce programme intègre en recherche et développement, des projets sur les incendies de forêt, la télédétection, la météorologie, la modélisation, la croissance et la récolte, et le RIMA. Il permet ainsi l'élaboration et la démonstration de systèmes d'aménagement forestier.

STATISTIQUES NATIONALES SUR LA RESSOURCE FORESTIÈRE - Communément appelé FORSTATS, ce programme assure la coordination de l'acquisition, de la normalisation et de la publication de statistiques nationales sur les forêts du Canada. Il est aussi chargé de répondre aux demandes de renseignements de la clientèle.

SYSTÈMES DE DONNÉES FORESTIÈRES - Ce programme fournit la compétence et les systèmes informatisés nécessaires à la gestion des données acquises dans le cadre de FORSTATS et des projets de recherche à l'IFNP. Il comprend en outre un service de consultation en informatique pour les hauts fonctionnaires du SCF.

COMMUNICATIONS - Ce programme regroupe les activités de la bibliothèque et des projets touchant la sensibilisation du public, l'information, la rédaction-révision et les publications. L'Institut reçoit plus de 20 000 visiteurs chaque année. Le Centre d'accueil, des visites autoguidées et un programme éducatif complet sont ouverts à tous. C'est à l'IFNP que l'on trouve l'entrepôt national de toutes les publications scientifiques du SCF.

LA FORÊT EXPÉRIMENTALE - Outre des peuplements naturels où l'on applique divers traitements dans le cadre de projets de recherche en sylviculture, la Forêt de Petewawa, mesurant 98 km², comprend de vastes superficies de plantations âgées de plus de 60 ans. Ces plantations expérimentales permettent d'obtenir des données sur la croissance et la récolte à la suite d'expériences de culture. Elles fournissent du matériel génétique dont le lignage est répertorié, et se révèlent de plus en plus utiles pour les études sur la micropropagation et la génétique moléculaire. La forêt permet également de mettre à l'essai des stratégies d'aménagement forestier à court et à long terme.

Catalogue of Canadian Forest Inventory Publications and Manuals
Catalogue des manuels et publications de l'inventaire des forêts du Canada

Information Report/Rapport d'information PI-X-76E/F

K. Nietmann

Forest Inventory Program/
Programme d'inventaire forestier

Petawawa National Forestry Institute/
Institut forestier national de Petawawa
Canadian Forestry Service/
Service canadien des forêts

in cooperation with the/
avec la coopération du

Canadian Forest Inventory Committee/
Comité canadien de l'inventaire forestier

©Minister of Supply and Services Canada 1987/
Ministre des Approvisionnements et Services Canada 1987
Catalogue No./N° de catalogue Po46-11/76-1987
ISSN 0714-3354
ISBN 0-662-55501-5

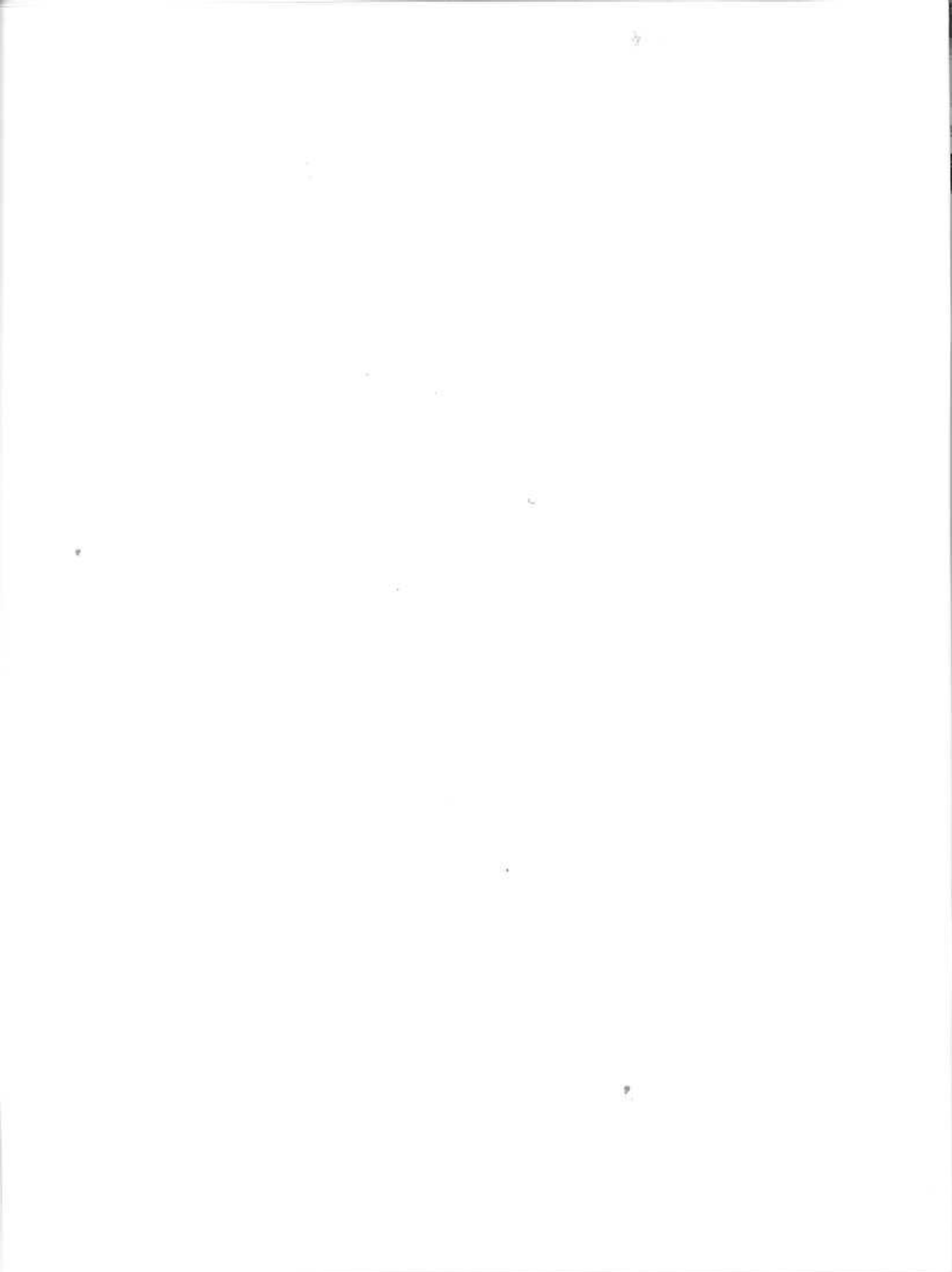
Additional copies of this publication can be obtained from/
Des exemplaires de cette publication peuvent être obtenus
à l'adresse suivante :

Publications Distribution Centre/
Centre de distribution des publications
Petawawa National Forestry Institute/
Institut forestier national de Petawawa
Chalk River (Ontario)
K0J 1J0

Telephone/N° de téléphone: (613) 589-2880

Contents/Tables des matières

1	Introduction
3	Alberta
6	British Columbia/Colombie-Britannique
8	Manitoba
9	New Brunswick/Nouveau-Brunswick
11	Newfoundland/Terre-Neuve
14	Nova Scotia/Nouvelle-Écosse
17	Ontario
18	Prince Edward Island/Île-du-Prince-Édouard
19	Québec
21	Saskatchewan
23	Canada
24	Forest Stand Maps/Cartes de recouvrement forestier



Catalogue of Canadian Forest Inventory Publications and Manuals

Catalogue des manuels et publications de l'inventaire des forêts du Canada

INTRODUCTION

In order to promote sharing of forest inventory methods, the Canadian Forest Inventory Committee (CFIC) decided to prepare a list of all forest inventory-related publications and manuals produced or used by the provinces and territories and by the Canadian Forestry Service. Special interest was expressed in unpublished manuals and technical instructions that otherwise would rarely be known outside the source agency.

The list is being continuously updated, and contributions are solicited, preferably with one copy of each document. An updated list will be published each year as a Canadian Forestry Service information report. New contributions should arrive at the Petawawa National Forestry Institute (PNFI) by July 31 if they are to be included in the next edition of the catalogue. A current listing of publications and manuals is available on request to Katja Nietmann, PNFI, who can be contacted at (613) 589-2880, ext. 141. The Institute will attempt to obtain and maintain a copy of each document listed. Samples of forest stand maps will also be sought from the provinces. They will be for reference only, by staff and visitors, and not for distribution.

The catalogue is arranged alphabetically, by province. An upper-case letter in the margin indicates a copy of the document has been sent to the Forest Inventory Project, FORSTATS Program, PNFI. A lower-case letter means the province or territory currently retains all copies of the document. The letters in the margin are also significant in another way. The letter 'A' or 'a' indicates that the document has been published, and is available to anyone. 'B' or 'b' indicates that the document is internal to the source, and available on request to the source.

Also included is a list of provinces that have provided a sample forest stand map.

En vue d'encourager le partage de connaissances au niveau des méthodes d'inventaire forestier, le Comité canadien de l'inventaire forestier a décidé de préparer une liste de tous les manuels et documents traitant de l'inventaire forestier, et produits ou utilisés par les provinces, les territoires ou le Service canadien des forêts.

Le répertoire trouve sa raison d'être dans la possibilité de diffuser l'information contenue à l'intérieur des manuels, instructions techniques et autres documents non-publiés qui sont rarement connus à l'extérieur de la source.

Cette liste étant mise à jour continuellement, la participation des intervenants du secteur de l'inventaire forestier est sollicitée et prend la forme d'une communication concernant les changements effectués dans la liste (ajouts, modifications, etc.). L'envoi d'un exemplaire des documents mentionnés auparavant sert à la mise en place d'une banque d'information accessible pour toutes les personnes qui en feront la demande.

Chaque année, un rapport d'information publié et distribué par le Service canadien des forêts dresse une liste révisée des écrits touchant l'inventaire des forêts au Canada. Or, pour être inclus dans la nouvelle parution du catalogue, les modifications doivent parvenir à l'Institut forestier national de Petawawa avant le 31 juillet. Notez, toutefois, qu'il est toujours possible de connaître les changements apportés à la liste en téléphonant Katja Nietmann, à l'IFNP, au numéro suivant : (613) 589-2880, poste 141.

L'IFNP désire mettre à la disposition (pour consultation seulement) des personnes intéressées, l'information relative aux méthodes d'inventaire forestier. Cela se traduit par la possession de l'ensemble des documents répertoriés dans le catalogue, ainsi que des échantillons des cartes de recouvrement forestier utilisées pour l'inventaire forestier dans l'ensemble du Canada.

Dans le catalogue, les provinces sont rangées par ordre alphabétique. Une lettre majuscule dans la marge indique que le Programme d'inventaire forestier de l'IFNP a reçu une copie de ce document. Une lettre minuscule signifie que la province ou le territoire conserve toutes les copies du document. Les lettres situées dans la marge ont aussi une signification. Ainsi, un <<A>> ou un <<a>> indique que le document a été publié et est disponible à tout le monde. Un <> ou un <> signifie que le document n'a pas été publié et est disponible seulement sur demande à la source.

Une liste des provinces ayant fournies des exemplaires de cartes de recouvrement forestier est aussi incluse au répertoire.

ALBERTA

- A 1:20 000 base mapping project systems design alternatives. Alta. Energy & Nat. Res. 1983.
- A Alberta forest regeneration survey manual. Alta. Dept. Energy & Nat. Res. 1979.
- a Alberta land inventory. Land capability classification for forestry. Alta. Energy & Nat. Res. Rept. No. 11. 1979.
- A Alberta phase 3 forest inventory: Aerial photography specifications. Alta. Dept. Energy & Nat. Res. Rep. No. 87. 1985.
- a Alberta phase 3 forest inventory: Alberta forests - some facts. Alta. Energy & Nat. Res. Rep. No. I/92. 1985.
- a Alberta phase 3 forest inventory: A overview. Alta. Energy & Nat. Res. Rep. No. I/86. 1985.
- A Alberta phase 3 forest inventory: Forest cover type specifications. Alta. Dept. Energy & Nat. Res. Rep. No. 58. 1985.
- A Alberta phase 3 forest inventory: Ground truthing procedures. Alta. Dept. Energy & Nat. Res. Rep. No. 53. 1985.
- A Alberta phase 3 forest inventory: Large-scale photography procedures. Alta. Dept. Energy & Nat. Res. Rep. No. 55. 1985.
- A Alberta phase 3 forest inventory: Map cover type measurement specifications. Alta. Dept. Energy & Nat. Res. Rep. No. 54. 1985.
- A Alberta phase 3 forest inventory: Mapping specifications. Alta. Dept. Energy & Nat. Res. Rep. No. 57. 1985.
- A Alberta phase 3 forest inventory: Single tree volume tables: Appendix I. Alta. Dept. Energy & Nat. Res. Rep. No. 86b. 1985.
- A Alberta phase 3 forest inventory: Single tree volume tables: Method of formulation. Alta. Dept. Energy & Nat. Res. Rep. No. 86a. 1985.
- A Alberta phase 3 forest inventory: Single tree volume tables: Volume sampling region 2. Alta. Dept. Energy & Nat. Res. Rep. No. 86d. 1985.
- A Alberta phase 3 forest inventory: Single tree volume tables: Volume sampling region 3. Alta. Dept. Energy & Nat. Res. Rep. No. 86e. 1985.
- A Alberta phase 3 forest inventory: Single tree volume tables: Volume sampling region 4. Alta. Dept. Energy & Nat. Res. Rep. No. 86f. 1985.

- A Alberta phase 3 forest inventory: Single tree volume tables: Volume sampling region 5. Alta. Dept. Energy & Nat. Res. Rep. No. 86g. 1985.
- A Alberta phase 3 forest inventory: Single tree volume tables: Volume sampling region 6. Alta. Dept. Energy & Nat. Res. Rep. No. 86h. 1985.
- A Alberta phase 3 forest inventory: Single tree volume tables: Volume sampling region 7. Alta. Dept. Energy & Nat. Res. Rep. No. 86i. 1985.
- A Alberta phase 3 forest inventory: Single tree volume tables: Volume sampling region 8. Alta. Dept. Energy & Nat. Res. Rep. No. 86j. 1985.
- A Alberta phase 3 forest inventory: Single tree volume tables: Volume sampling region 10. Alta. Dept. Energy & Nat. Res. Rep. No. 86k. 1985.
- A Alberta phase 3 forest inventory: Single tree volume tables: Volume sampling regions 1 and 11. Alta. Dept. Energy & Nat. Res. Rep. No. 86c. 1985.
- A Alberta phase 3 forest inventory: Temporary sample plot procedures. Alta. Dept. Energy & Nat. Res. Rep. No. 59. 1985.
- A Alberta phase 3 forest inventory: Tree sectioning manual. Alta. Dept. Energy & Nat. Res. Rep. No. 56. 1985.
- A Alberta phase 3 forest inventory: Volumes and stem numbers for forest types: Central Alberta, volume sampling regions 4, 5, and 6. Alta. Dept. Energy & Nat. Res. Rep. No. 61c. 1985.
- A Alberta phase 3 forest inventory: Volumes and stem numbers for forest types: Northern Alberta, volume sampling regions 7, 8, and 10. Alta. Dept. Energy & Nat. Res. Rep. No. 61d. 1985.
- A Alberta phase 3 forest inventory: Volumes and stem numbers for forest types: Southern Alberta, volume sampling regions 1, 2, 3, and 11. Alta. Dept. Energy & Nat. Res. Rep. No. 61b. 1985.
- A Alberta phase 3 forest inventory: Volumes and stem numbers for forest types: Steps to volume table formulation. Alta. Dept. Energy & Nat. Res. Rep. No. 61a. 1985.
- A Alberta phase 3 forest inventory: Yield tables for unmanaged stands. Alta. Dept. Energy & Nat. Res. Rep. No. 60a. 1985.
- A Alberta phase 3 forest inventory: Yield tables for unmanaged stands: Appendix I. Alta. Dept. Energy & Nat. Res. Rep. No. 60b. 1985.
- a A program for updating the timber management forest inventory in Alberta. Alta. Dept. Energy & Nat. Res. 1982.

- A Energy and natural resources annual report, March 31, 1984. Alta. Dept. Energy & Nat. Res. 1984.
- a Forest statistics review, 1979-80. (Revised). Alta. Dept. Energy & Nat. Res. 1982.
- A LeMay, V. 1982. Individual tree volume estimation of Alberta. M. Sc. thesis.
- A Map catalogue. Alta. Dept. Energy & Nat. Res. 1978.
- A Phase III forest inventory and its relationship with other inventories Dept. Lands & For., Alta. For. Serv. 1975.
- a Regeneration survey manual. Dept. Lands & For., Alta. For. Serv. 1971.
- A Thematic map data conversion project. Alta. Dept. Energy & Nat. Res. 1983.

BRITISH COLUMBIA/COLOMBIE-BRITANNIQUE

- A 1984 forest and range resource analysis. B.C. Min. For. 1984.
- a British Columbia forest facts. B.C. Min. For. 1979.
- A Canadian forest inventory data conversion system for British Columbia (CIDBC). Pacific For. Res. Cent., Can. For. Serv., Env. Can. 1981.
- A Catalogue of output statements. B.C. Min. For. 1980.
- a Colour stereogram handbook. B.C. Min. For.
- A Field handbook. B.C. Min. For.
- a Five year plan for forest and range inventory in British Columbia: 1981-1985. B.C. Min. For.
- A Five year plan for forest inventory in B.C. Period: April 1, 1981 -- March 31, 1986. B.C. Min. For. 1982.
- A Forest and range inventory in British Columbia. B.C. Min. For. 1980.
- A Forest classification and sampling manual (imperial). B.C. Min. For. 1974.
- A Forest classification and sampling manual (metric). B.C. Min. For. 1977.
- A Forest inventory environmental protection guidelines. B.C. Min. For. 1976.
- A Forest inventory environmental protection guidelines. B.C. Min. For. 1979.
- A Forest inventory manual. Glossary of terms. B.C. Min. For. 1985.
- A Forest inventory manual. Vols. I-III, 10 chapters. B.C. Min. For. 1981-85. (2 of Chapter 8, Growth and yield).
- A Forest inventory statistics of B.C., 1973. B.C. For. Serv. 1975.
- A Growth manual. B.C. Min. For. 1966.
- A Helicopter camera boom instruction and operation handbook. B.C. Min. For.
- a Metric diameter class decay, waste and breakage factors (all forest inventory zones). B.C. Min. For. 1976.
- a Mitchell, K.; Cameron, I. Managed stand yield tables for coastal Douglas-fir: Initial density and precommercial thinning. B.C. Min. For. Res. Br. Land Man. Rep. No. 31. 1985.

- A Site index equations and curves for the major tree species in British Columbia. B.C. Min. For., Inv. Rep. No. 1. 1979.
- A Sterocord handbook. B.C. Min. For.
- A Summary of the 1984 forest and range resource analysis. B.C. Min. For. 1984.
- A Variable density yield projection coefficients for pure stands in B.C. Inv. Rep. No. 3. B.C. Min. For. 1983.
- A Variable density yield tables, coastal Douglas-fir (F.I.Z. A, B, & C). B.C. Min. For., Inv. Rep. No. 2. 1982.
- A Volume and decay manual. B.C. Min. For. 1977.
- a Whole stem cubic metre volume equations - Centimetre diameter class merchantable volume factors. B.C. Min. For. 1976.
- a Zonal diameter class. Decay, waste and breakage factors. Books I & II. B.C. For. Serv. 1972.
- a Zonal diameter class net volume (loss) factors. B.C. For. Serv. 1969.

MANITOBA

- B Area change coding manual. Dept. Nat. Res. 1978.
- B Area change coding manual. Dept. Nat. Res. 1983.
- A Catalogue - maps and aerial photographs. Man. Dept. Mines, Res. & Env. Man. 1974. (out of print)
- B Guide for use of forest inventory maps. Man. Dept. Mines, Res. & Env. Man. 19??
- A Manitoba forest regeneration survey manual. Man. Dept. Nat. Res. 1985.
- A Manitoba plantation assessment manual. Man. Dept. Nat. Res. 1985.
- b Provincial forest inventory. Field instructions 1970. Dept. Mines & Nat. Res. 1970.
- B Provincial forest inventory. Field instructions 1975. Dept. Mines, Res. & Env. Man. 1975.
- B Provincial forest inventory. Field instructions 1977. Dept. Ren. Res. & Transp. Serv. 1977.
- B Provincial forest inventory. Field instructions 1984. Dept. Nat. Res. 1984.
- a The forests of Manitoba. Dept. Mines, Res. & Env. Man. 1975. (out of print)
- A Wells, R.E. 1987. Development of a methodology and rationale for a forest management site classification system for Manitoba.
- B Wildfire report instructions. Dept. Nat. Res. 1980.

NEW BRUNSWICK/NOUVEAU-BRUNSWICK

- A 1982-83 Annual report. N.B. Dept. Nat. Res. 1983. (1982-83 Rapport annuel.)
- A 1983 publications from the library of the Forest Extension Branch. N.B. Dept. Nat. Res. 1983.
- a A report on the feasibility of harvesting timber within buffer zones: A literature review. N.B. Dept. Nat. Res. 1983.
- A Aerial photo interpretation and mapping of northwestern New Brunswick. N.B. Dept. Nat. Res. 1977.
- a An assessment of damage caused spruce budworm on spruce and balsam fir trees in New Brunswick. N.B. Dept. Nat. Res. 1981.
- a B. T. and the spruce budworm. N.B. Dept. Nat. Res. 1983.
- A Decay survey report. Provincial crown lands. N.B. Dept. Nat. Res. 1969.
- A Final report of the task force on forest management to the Minister of Natural Resources. N.B. Dept. Nat. Res. 1981.
- a First year survival and density of 1978 Plantations. N.B. Dept. Nat. Res. 1980.
- A First year survival and densities of 1979 plantations. N.B. Dept. Nat. Res. 1981.
- A Forest development survey. Field manual. N.B. Dept. Nat. Res. 1983.
- A Forestry Report. New Brunswick's forests. Maritimes For. Res. Cent., Can. For. Serv., Env. Can. 1984.
- A Good forest management: A commitment to action. N.B. Dept. Nat. Res. 1983. (Bien aménager les forêts c'est s'engager à agir.)
- A Growth and yield of New Brunswick forest species. An annotated bibliography. Fac. of For., U. of N.B., under contract to N.B. Dept. Nat. Res. 1985.
- A Nashwaak experimental watershed project annual report 1980-81. N.B. Dept. Nat. Res. 1982.
- A New Brunswick ecological reserves annual report 1980. N.B. Dept. Nat. Res. 1980. (Nouveau-Brunswick Reserves écologiques Rapport annuel 1980.)
- A New Brunswick forest development survey field manual. N.B. Dept. Nat. Res. 1983.

- A New Brunswick forest inventory. A summary report. N.B. Dept. Lands & Mines. 1958.
- A New Brunswick forest inventory. N.B. Dept. Nat. Res. 1981. (Inventaire forestier du Nouveau-Brunswick.)
- a Preliminary results and assessment of the fertilizer trials established in plantations on the Minto strip mine deposit. N.B. Dept. Nat. Res. 1979.
- A Provincial forest inventory - field sampling procedure. N.B. Dept. Nat. Res. 19??
- A Report of the forest resources study. N.B. Dept. Nat. Res., For. Man. Br. 1974.
- a Report of the task force for evaluation of budworm control alternatives. N.B. Dept. Nat. Res. 1976.
- a Silviculture reports. N.B. Dept. Nat. Res. 1973-1982.
- A Silviculture statistics crown lands 1981-82. N.B. Dept. Nat. Res. 1982.
- a Spruce budworm protection program. N.B. Dept. Nat. Res. 1983.
- a Task force on crown timberland allocation. N.B. Dept. Nat. Res. 1980.
- A The spruce/fir wood supply in New Brunswick. N.B. Dept. Nat. Res. 1982. (Les ressources forestières en épinette et en sapin au Nouveau-Brunswick.)
- a Timber utilization survey. N.B. Dept. Nat. Res. 1975-1983.
- A Toward a framework for forest management decision-making in New Brunswick. N.B. Dept. Nat. Res. 1978.

NEWFOUNDLAND/TERRE-NEUVE

- A 1969 Inventory statistics of forests and forest lands on the Island of Newfoundland. June, 1974.
- A 1973 inventory statistics of forests and forest lands of Labrador. Nfld. Dept. For. & Agr., Inf. Rep. FI-3, 1975.
- A A bio-physical land classification for Labrador. Nfld. Dept. For. & Agr., Int. Rep. FI-I-21, 1975.
- b A method of determining usable volumes from operational cruise data. Nfld. Dept. For. & Agr., Inf. Rep. FI-6, 1977.
- b Application of direct and indirect tree height measurements in plot volume regression equation. Nfld. Dept. For. & Agr., Int. Rep. FI-I-5, 1971.
- A Assessment of forest damage from spruce budworm attack using true color and infrared aerial photography. Nfld. Dept. For. & Agr., Inf. Rep. FI-7, 1979.
- B Bajzak, D. 1962. A test of relascope sampling under Newfoundland conditions. Project NF-55A. Can. Dept. For., For. Res. Br.
- a Charlottetown timber estimate - Labrador. Nfld. Dept. For. & Agr., Int. Rep. FI-I-11, 1973.
- a Detailed metric tree volume tables for the common tree species of Newfoundland. Nfld. Dept. For. & Agr., Int. Rep. FI-I-26, 1978.
- B Extensive inventory manual - Labrador. Nfld. Dept. For. & Agr., Int. Rep. FI-I-4, 1971.
- A Forest inventory statistics - Labrador. Nfld. Dept. For. & Agr. 1975.
- a Forest inventory statistics - Newfoundland. Nfld. Dept. For. & Agr., Int. Rep. FI-I-6a,b,c, 1972.
- a Forest inventory statistics - Newfoundland. Nfld. Dept. For. & Agr., pamphlet PI-1, 1974.
- a Forest inventory statistics - Newfoundland and Labrador. Nfld. Dept. For. & Agr., pamphlet PI-2, 1976.
- A Forest inventory results of Management Unit 2. Nfld. Dept. For. & Agr., pamphlet PI-6, 1978.
- b Forest management inventory system manuals. Nfld. Dept. For. & Agr. 1978.
- B Forest management inventory user requirements. Nfld. Dept. For. & Agr. 1976.

- a Information contained in the library of the Department of Forestry and Agriculture, Forestry Headquarters, Building 810, Pleasantville, St. John's. Nfld. Dept. For. & Agr., Int. Rep. FI-I-24, 1977.
- b Island stand volume tables (for mapping). Nfld. Dept. For. & Agr., Int. Rep. FI-I-15, 1974.
- a Kaipokok River timber estimate - Labrador. Nfld. Dept. For. & Agr., Int. Rep. FI-I-12, 1973.
- b Labrador computer system - Tender document. Nfld. Dept. For. & Agr., Int. Rep. FI-I-16, 1974.
- A Labrador extensive inventory report. Nfld. Dept. Mines, Agr. & Res. 1972.
- b Labrador extensive LSP methods. Nfld. Dept. For. & Agr., Int. Rep. FI-I-1, 1966.
- A Labrador intensive inventory methods. Nfld. Dept. For. & Agr., Int. Rep. FI-I-23. 1976.
- A Land capability classification for forestry in Newfoundland, 1974. Nfld. Dept. For. & Agr., Inf. Rep. FI-1.
- b Manual for forest site descriptions. Nfld. Dept. For. & Agr., Int. Rep. FI-I-25, 1978.
- B Manual of the design for the management inventory. Nfld. Dept. For. & Agr., Int. Rep. FI-I-20, 1975.
- a Mud Lake timber estimate - Labrador. Nfld. Dept. For. & Agr., Int. Rep. FI-I-13, 1973.
- A Newfoundland forest facts. Nfld. For. Res. Cent., Can. For. Serv., Env. Can. 19??
- b Newfoundland forest inventory field reference material. Nfld. Dept. For. & Agr., Int. Rep. FI-I-2, 1970.
- B Newfoundland forest inventory manual. Nfld. Dept. Mines, Agr. & Res. 19??
- a Paradise River timber estimate - Labrador. Nfld. Dept. For. & Agr., Int. Rep. FI-I-10, 1973.
- a Pinware River (Red Bay) timber estimate - Labrador. Nfld. Dept. For. & Agr., Int. Rep. FI-I-18, 1974.
- b Proposed statistical design for extensive forest inventory in Labrador. Nfld. Dept. For. & Agr., Int. Rep. FI-I-3, 1971.
- A Quality inventory, white birch, central Newfoundland. Nfld. Dept. For. & Agr., Inf. Rep. FI-4, 1976.

- a Report to the government of Newfoundland and Labrador of the Royal Commission on Forestry. 1970.
- B Stand volume tables (for mapping). Nfld. Dept. For. & Agr. 1974.
- a Tables of forest types present in Newfoundland. Nfld. Dept. For. & Agr., Int. Rep. FI-I-19, 1974.
- a The forest inventory results of Management Unit 7. Nfld. Dept. For. & Agr., pamphlet PI-7, 1979.
- a The forest inventory results of Management Unit 10. Nfld. Dept. For. & Agr., pamphlet PI-4, 1977.
- a The forest inventory results of Management Unit 14 (St. Georges). Nfld. Dept. For. & Agr., pamphlet PI-3, 1977.
- a The forest inventory results of Management Unit 19. Nfld. Dept. For. & Agr., pamphlet PI-8.
- A The forest management inventory of Newfoundland. Nfld. Dept. For. & Agr., Inf. Rep. FI-5. 1977.
- a Timber estimate - large watersheds in Labrador. Nfld. Dept. For. & Agr., Int. Rep. FI-I-14, 1973.
- a Timber estimate - Sir Richard Squires Park. Nfld. Dept. For. & Agr., Int. Rep. FI-I-17, 1974.
- a Timber survey of the Conne River area. Nfld. Dept. For. & Agr., Int. Rep. FI-I-22, 1976.
- a Timber survey of the proposed flooded area of the lower Churchill River. Nfld. Dept. For. & Agr., Int. Rep. FI-I-9, 1973.

NOVA SCOTIA/NOUVELLE-ÉCOSSE

- A 1981 forest inventory Antigonish County. N.S. Dept. Lands & For., Tech. Note #11. 1983.
- A 1981 forest inventory Pictou County. N.S. Dept. Lands & For., Tech. Note #10. 1983.
- A 1981-82 forest inventory eastern subdivision. N.S. Dept. Lands & For., Tech. Note #13. 1983.
- A 1981-82 forest inventory Guysborough County. N.S. Dept. Lands & For., Tech. Note #12. 1983.
- A 1982 forest inventory Hants County. N.S. Dept. Lands & For., Tech. Note #14. 1983.
- A 1982-83 forest inventory south central subdivision. N.S. Dept. Lands & For., Tech. Note #34. 1985.
- A 1983 forest inventory Halifax County. N.S. Dept. Lands & For., Tech. Note #33. 1985.
- A Cone crop and collection - 1983. N.S. Dept. Lands & For., Tech. Note #21. 1984.
- A Current status of the softwood resource on Cape Breton Island. For. Res. Note #3. N.S. Dept. Lands & For. 1983.
- A Eastern N.S. Forest products from 3P dendrometry sampling, 1977-78. N.S. Dept. Lands & For., Inf. Rep. 1979.
- a Forest regulation for N.S. Part II: Stand description cruising. N.S. Dept. Lands & For., Bull. #21. 1961.
- A Forest resources of Nova Scotia. N.S. Dept. Lands & For. 1958.
- A Forest species in association in Nova Scotia. N.S. Dept. Lands & For. 198?
- A Forestry--a new policy for Nova Scotia 1986. N.S. Dept. Lands & For. 1986.
- A Forestry field handbook. N.S. Dept. Lands & For. 1984?
- A How do our forests grow? Highlights of 1965-71 provincial forest inventory. N.S. Dept. Lands & For.
- a Mensuration for management. N.S. Dept. Lands & For. 1963.
- A Multistage integrated forest inventory field specifications. N.S. Dept. Lands & For. 1984.

- A N.S. Dept. of Lands and Forests provincial forest resources inventory. Field specifications 1984. N.S. Dept. Lands & For. 1984.
- A N.S. forest inventory. Annapolis subdivision. 1969. N.S. Dept. Lands & For. 1970.
- A N.S. forest inventory. Antigonish subdivision. 1965. N.S. Dept. Lands & For. 1968.
- A N.S. forest inventory. Cape Breton Island. 1984-85. N.S. Dept. Lands & For. 1986.
- A N.S. forest inventory. Cape Breton Island subdivision. 1970. N.S. Dept. Lands & For. 1972.
- A N.S. forest inventory. Cape Breton north subdivision (Inverness and Victoria counties). 1985. N.S. Dept. Lands & For. 1986.
- A N.S. forest inventory. Cape Breton south subdivision (Richmond and Cape Breton counties). 1984. N.S. Dept. Lands & For. 1986.
- A N.S. forest inventory. Eastern subdivision. 1972-73. N.S. Dept. Lands & For. 1977.
- A N.S. forest inventory. Easter subdivision (Pictou, Antigonish, Guysborough counties). 1981-82. N.S. Dept. Lands & For. 1983.
- A N.S. forest inventory. Halifax subdivision. 1967. N.S. Dept. Lands & For. 1969.
- A N.S. forest inventory. Lunenburg subdivision. 1966. N.S. Dept. Lands & For. 1968.
- A N.S. forest inventory. North central subdivision. 1976. N.S. Dept. Lands & For. 1978.
- A N.S. forest inventory. South central subdivision (Hants and Halifax counties). 1983. N.S. Dept. Lands & For. 1983.
- A N.S. forest inventory. Provincial summary 1975-82. N.S. Dept. Lands & For., Inf. Rep. 1983.
- A N.S. forest inventory. Provincial summary 1970-78. N.S. Dept. Lands & For., Inf. Rep. 1979.
- A N.S. forest inventory. South central subdivision. 1974-75. N.S. Dept. Lands & For. 1977.
- A N.S. forest inventory. South Shore subdivision. 1977. N.S. Dept. Lands & For. 1979.
- A N.S. forest inventory. Subdivision one. Three stage 3P dendrometry sampling 1981-82. N.S. Dept. Lands & For., Inf. Rep.

- A N.S. forest inventory. Subdivision three. Three stage 3P dendrometry sampling. N.S. Dept. Lands & For., Inf. Rep.
- A N.S. forest inventory. Truro subdivision. 1968. N.S. Dept. Lands & For. 1970.
- A N.S. forest inventory. Valley subdivision. 1978. N.S. Dept. Lands & For. 1979.
- A N.S. forest inventory. Western subdivision. 1979-80. N.S. Dept. Lands & For. 1980.
- A N.S. forest inventory. Yarmouth subdivision. 1971. N.S. Dept. Lands & For. 1973.
- A N.S. provincial forest inventory metric specifications. N.S. Dept. Lands & For. 1976.
- A N.S. provincial forest inventory specifications. N.S. Dept. Lands & For. 1972.
- A N.S. provincial forest inventory three stage 3P sampling integrated wildlife summary specification. N.S. Dept. Lands & For., Tech. Note #16. 1983.
- A Nova Scotia forest products directory 1976. N.S. Dept. Lands & For. 1977.
- A Periodic annual increment, province of N.S. 1965-75. N.S. Dept. Lands & For., Inf. Rep. 1977.
- A Periodic annual increment, province of N.S. 1965-80. N.S. Dept. Lands & For., Inf. Rep. 1980?
- A Production of highland black spruce from cuttings. N.S. Dept. Lands & For., For. Tech. Note #7. 1983.
- A Province of N.S. Forest products from 3P dendrometry sampling, 1974-78. N.S. Dept. Lands & For., Inf. Rep. 1979.
- A Remeasurement of permanent sample plots. N.S. Dept. Lands & For., For. Tech. Note #9. 1983.
- A Seedbed density influences diameter and dry weight of 2+0 spruce seedlings. Forest research note #7. N.S. Dept. Lands & For. 1983.
- A South Western N.S. Forest products from 3P dendrometry sampling, 1975-76. N.S. Dept. Lands & For., Inf. Rep. 1978.
- A Submission to Royal Commission on Forestry. N.S. Dept. Lands & For., Halifax. 1983.
- A Summary of forest production data. 1935-83. N.S. Dept. Lands & For., Inf. Rep. 1984.

ONTARIO

- b A manual for the survey of not satisfactorily regenerated (NSR) lands. Ont. Min. Nat. Res. 1980.
- A An instruction manual on the assessment of regeneration success by aerial survey. Ont. Min. Nat. Res., Ont. Cent. for Rem. Sensing. 1982.
- A Baskerville, G.L. 1986. An audit of management of the crown forests of Ontario.
- A Cull survey tables. Ont. Min. Nat. Res. 1974.
- A Forest inventory maintenance procedure for the province of Ontario. Ont. Min. Nat. Res. 1965 (reprint 1974).
- A Forest inventory procedure for Ontario. 3rd ed. Ont. Min. Nat. Res. 1978.
- A Forest management manual. Ont. Min. Nat. Res. 1980.
- a Forest resource inventory. A survey of a pathological condition in the forests of Ontario. 1958. Ont. Dept. Lands & For.
- A Manual of forest management plan requirements for the province of Ontario. Ont. Dept. Lands & For. 1964.
- B Manual of forest management plan requirements for the province of Ontario. Second edition. Draft. Ont. Min. Nat. Res. 1976.
- A Manual of forest management plan requirements for the province of Ontario. Second edition. 1977.
- A Normal yield tables (metric). Ont. Min. Nat. Res. 1981.
- A Point-sampling, wedge prisms and their application in forest inventories. Ont. Dept. Lands & For. 1958.
- A Statistics 1980. Ont. Min. Nat. Res. 1980.
- A The forest resources of Ontario. 1986. Ont. Min. Nat. Res.
- A Timber management planning manual for Crown Lands in Ontario. Ont. Min. Nat. Res. 1986.

PRINCE EDWARD ISLAND/ÎLE-DU-PRINCE-ÉDOUARD

- A Annual report for April 1, 1985 - March 31, 1986. P.E.I. Dept. Energy & For. 1986.
- A Forest and biomass inventory executive summary, 1982. Dendron Resource Surveys.
- B Forest/biomass inventory of P.E.I. Volume 1: Methodology. Dendron Resource Surveys. 1982.
- A Forestry. Working now for the future. P.E.I. Dept. Energy & For. Pamphlet. 19??
- B Hutchinson, P.J. The Prince Edward Island forest site classification and capability system: An interim report. P.E.I. Dept. Energy & For., For. Br., Silv. Dev. 1986.
- A Island forests...new directions for the 80s. The 1983-1988 Canada-Prince Edward Island Forest Resource Development Agreement. Can. For. Serv., Env. Can. and P.E.I. Dept. Energy & For. Pamphlet. 198?
- A Local volume tables. P.E.I. Dept. Energy & For., For. Br. 1982.
- B Prince Edward Island's forests. Forestry Report. Maritimes Forest Research Center, Fredericton. Can. For. Serv. 1984.
- B Sampling procedures for a Prince Edward Island forest site classification. P.E.I. Dept. Energy & For., For. Br. 1983.

QUÉBEC

- A Croissance des essences feuillues et résineuses: conception, utilisation d'un modèle de prédiction. Min. de l'Énergie et des Ressources du Qué. 1982.
- A Échantillonnage 3P. Sommaire de la théorie. Min. de l'Énergie et des Ressources du Qué. 1978.
- A Étapes de la gestion forestière. Min. Terres et Forêts du Qué. 19??
- A Guide pratique d'aménagement des forêts privées. Env. Can. 1984.
- A Inventaire sommaire de petits boisés. Min. de l'Énergie et des Ressources du Qué. 1984.
- A Inventaire sommaire de petits boisés. Min. Terres et Forêts du Qué. 1975.
- A Jolivet, J.-P. 1985. Building a forest for tomorrow. The forest policy. Min. de l'Énergie et des Ressources du Qué.
- A La croissance forestière au Québec. Min. de l'Énergie et des Ressources du Qué. 1983. (plus one translation by D. McKenna)
- A Les placettes-échantillons permanentes et leurs utilisations. Min. de l'Énergie et des Ressources du Qué. 1983. (plus one translation by D. McKenna)
- A Manuel de classification de tiges pour les essences feuillues plus les pins blanc et rouge. Min. de l'Énergie et des Ressources du Qué. 1982.
- A Massifs boisés du Québec. Min. Terres et Forêts du Qué. 19??
- A Normes d'échantillonnage 3P. Min. Terres et Forêts du Qué. 1977.
- a Normes de la sondage. Éd. provisoire. Min. Terres et Forêts du Qué. Avril, 1970.
- A Normes d'inventaire d'exploitation. Min. Terres et Forêts du Qué. 1974.
- A Normes d'inventaire forestier. Min. de l'Énergie et des Ressources du Qué. 1984.
- A Normes d'inventaire forestier 1981. Min. de l'Énergie et des Ressources du Qué. 1983. (plus one translation by D. McKenna)
- A Perron, J.-Y. 1986. Standard volume tables. Gross merchantable volume. Min. de l'Énergie et des Ressources du Qué.
- A Placette permanente, normes techniques. Min. de l'Énergie et des Ressources du Qué. 1984.

- A Québec's forests and forest industry. Min. de l'Énergie et des Ressources du Qué. 1984.
- A Ressource et industrie forestières. Min. de l'Énergie et des Ressources du Qué. 1983.
- A Ressource et industrie forestières. Min. de l'Énergie et des Ressources du Qué. 1984.
- A Signes conventionnels pour le dessin de la cartographie forestière. Min. Terres et Forêts du Qué. 1974.
- A Tarif de cubage général, volume marchand brut. Min. de l'Énergie et des Ressources du Qué. 19??
- A Tarifs de cubage (d'arbres entiers). Min. de l'Énergie et des Ressources du Qué. 1977.
- A Tarifs de cubage d'arbres entiers (résultats). Min. de l'Énergie et des Ressources du Qué. 1978.
- A Tarifs de cubage d'utilisation - ceuillette des données. Min. Terres et Forêts du Qué. 1974.
- A Tarifs de cubage d'utilisation - estimation du volume d'une tige. Min. Terres et Forêts du Qué. 1974.
- A Tarifs de cubage d'utilisation - variation de l'épaisseur de l'écorce. Min. Terres et Forêts du Qué. 1974.
- A Tarifs de cubage généraux. Min. Terres et Forêts du Qué. 1976.
- A Tenure et administration des forêts. Map/Carte. Min. de l'Énergie et des Ressources du Qué. 1980.
- A Validation de la parcelle-échantillon permanente. Min. Terres et Forêts du Qué. 1976.
- A Vérification des travaux d'inventaire forestier. Min. Terres et Forêts du Qué. 1977.

SASKATCHEWAN

- b A guide to field sampling procedures for the stem analysis project. Sask. Parks & Renewable Res. Rev. 1981.
- A Analytical aerotriangulation for forest inventory base mapping. Sask. Dept. of Tourism & Renewable Res. 1980.
- a Black spruce in Saskatchewan. Sask. Dept. of Tourism & Renewable Res., Tech. Bull. No. 7. 1973.
- a Ecological regions of Saskatchewan. Sask. Dept. of Parks & Renewable Res., Tech. Bull. No. 10. 1983.
- A Ecological site capability classification (ESCC) system in a forest inventory. Sask. Dept. Parks & Renewable Res. 1984.
- a Forest resources of the Buffalo Narrows - Beauval area of Saskatchewan. Sask. Dept. Nat. Res., Rpt. No. 5. 1956.
- a Forest resources of the Cumberland Lake - Flin Flon area of Saskatchewan. Sask. Dept. Nat. Res., Rpt. No. 4. 1955.
- a Forest resources of the Meadow Lake area of Saskatchewan. Sask. Dept. Nat. Res., Rpt. No. 3. 1954.
- a Forest resources of the Pasquia/Porcupine area of Saskatchewan. Sask. Dept. Nat. Res., Rpt. No. 1. 1952.
- a Forest resources of the Prince Albert area of Saskatchewan. Sask. Dept. Nat. Res., Rpt. No. 2. 1953.
- A Forestry branch is... Sask. Dept. Tourism & Renewable Res. 1975 (?).
- b Growth and yield field procedures. Sask. Dept. Tourism & Renewable Res. 1980.
- a Growth and yield of aspen in Saskatchewan. Sask. Dept. Nat. Res., Tech. Bull. No. 3. 1957.
- a Growth and yield of black spruce in Saskatchewan. Sask. Dept. Nat. Res., Tech. Bull. No. 1. 1953. (out of print)
- a Growth and yield of jack pine in Saskatchewan. Sask. Dept. Nat. Res., Tech. Bull. No. 2. 1956. (out of print)
- A Growth and yield of well stocked white spruce in the Mixedwood section, Saskatchewan. Dept. Nat. Res., Tech. Bull. No. 5. 1971.
- a Growth and yield of white spruce aspen stands in Saskatchewan. Sask. Dept. Nat. Res., Tech. Bull. No. 4. 1962.
- a Guide to forest understory vegetation, Saskatchewan. Sask. Dept. Tourism & Ren. Res., Tech. Bull. No. 9. 1980.

- B Inventory maintenance field instructions. Sask. (Dept. Nat. Res.?) 19??
- A Land capability classification for forestry in Saskatchewan. Sask. Dept. Nat. Res., Tech. Bull. No. 6. 1972.
- a Mixedwood section in an ecological perspective, Saskatchewan. Sask. Dept. Tourism & Renewable Res., Tech. Bull. No. 8. 1976.
- B Northern reconnaissance survey field instructions. Sask. Dept. Tourism & Renewable Res. 1978.
- b Photointerpretation procedures manual. Sask. Dept. Tourism & Renewable Res. 1976.
- A Saskatchewan trees of renown. Sask. For. Assn. 1985.
- a Saskatchewan's forest inventory. 1947 to 1956. Sask. Dept. Nat. Res. 1959.
- a Saskatchewan's forest resources. Sask. Dept. Tourism & Renewable Res. 1974.
- B Specifications for the interpretation and mapping of aerial photographs in the forest inventory section. Sask. Parks & Renewable Res. 1985.
- A Timber cruising with 3P sampling approach. Sask. Parks & Renewable Res. Revised 1983.
- A Volume and factor tables Saskatchewan. Sask. Dept. Nat. Res. 1966.

CANADA

- A Bickerstaff, A. & S.A. Hostikka. 1977. Growth of forests in Canada. Part 1: An annotated bibliography. Fisheries & Env. Can., Can. For. Serv., For. Man. Inst., Inf. Rep. No. FMR-X-98.
- A Bickerstaff, A., W.L. Wallace, & F. Evert. 1981. Growth of forests in Canada. Part 2: A quantitative description of the land base and the mean annual increment. (La croissance des forêts au Canada. Partie 2: Description quantitative du territoire et de l'accroissement annuel moyen.) Env. Can., Can. For. Serv., PNFI, Inf. Rep. PI-X-1.
- A Bonnor, G.M. 1982. Canada's forest inventory 1981. Env. Can., Can. For. Serv., FSSB.
- A Bonnor, G.M. 1985. Inventory of forest biomass in Canada. (Inventaire de la biomasse forestière du Canada.) Can. For. Serv., PNFI.
- A Bonnor, G.M., ed. 1978. A guide to Canadian forest inventory terminology and usage. 2nd Ed. Can. For. Inv. Comm.
- A Canada's forest inventory - 1976. Env. Can., Can. For. Serv., For. Man. Inst., Inf. Rep. No. FMR-X-116. 1976.
- A Forest harvest on federal lands 1976-81. Env. Can., Can. For. Serv., FSSB, PNFI, Inf. Rep. No. PI-X-37. 1984.
- A Forest resource data bases, 1986. Workshop proceedings. CFIC, Fredericton, N.B. June 4, 1986. Can. For. Serv., Petawawa Nat. For. Inst. 1986.
- A Honer, T.G. & A. Bickerstaff. Canada's forest area and wood volume balance 1977-1981. Can. For. Serv., Pacific For. Cent., Inf. Rep. No. BC-X-272. 1985.
- B Minutes of the annual Canadian Forest Inventory Committee Meetings, 1976 to 1985. Can. For. Serv., PNFI.
- A Nietmann, K. & G.M. Bonnor. 1984. Forest inventory, access, and wood demand. A pilot study in Manitoba. Env. Can., Can. For. Serv., FSSB, PNFI, Inf. Rep. No. PI-X-35.
- A Reporting and summarizing forestry change data. Manitoba pilot study. (Présentation et réduction des données sur les changements touchant des forêts. Étude pilote au Manitoba.) Env. Can., Can. For. Serv., FSSB, PNFI, Inf. Rep. No. PI-X-36. 1984.
- A Selected forestry statistics - Canada. Econ. Br., Env. Can., Rep. No. E-X-32. 1984.
- B Specifications for Canada's forest inventory 1986. Can. For. Serv., PNFI, FORSTATS Program. 1985.

- A Reimer, D.R. & L.J. Loussier. 1984. Report on the status of growth and yield systems in North America. Env. Can., Can. For. Serv., FSSB.

FOREST STAND MAPS

The following provinces have provided forest stand maps, as samples of the maps used in Canadian forest inventory, for the forest inventory document library at PNFI.

Alberta
British Columbia
New Brunswick
Newfoundland
Nova Scotia
Ontario
Quebec
Prince Edward Island

CARTES DE RECOUVREMENT FORESTIER

Les provinces suivantes ont fourni des cartes de recouvrement forestier en échantillons des cartes utilisées pour l'inventaire forestier au Canada. Ces exemplaires sont intégrés à la bibliothèque des manuels et documents de l'IFNP.

Alberta
Colombie-Britannique
Nouveau-Brunswick
Terre-Neuve
Nouvelle-Écosse
Ontario
Québec
Île-du-Prince-Édouard