

CATALOGUE OF THE MARITIMES REGIONAL HERBARIUM

by

R. M. STRANG

FOREST RESEARCH LABORATORY
FREDERICTON, NEW BRUNSWICK

INFORMATION REPORT M-X-23

CANADIAN FORESTRY SERVICE
DEPARTMENT OF FISHERIES AND FORESTRY
FEBRUARY 1971

Since the last report on the Herbarium was prepared¹, there have been several staff changes and the Herbarium has been moved to the Regional Laboratory on the campus of the University of New Brunswick. There has also been a change in emphasis in the use of the Herbarium. The late G. C. Cunningham was no less a classical taxonomist than he was a forester and he assembled large collections of Amelanchier spp., Betula spp. and Rubus spp. besides collecting widely throughout the Maritime Provinces. Since his death, the Herbarium has been used to provide Laboratory staff with representative specimens against which they can check doubtful identifications and no detailed taxonomic studies have been undertaken.

Only three or four specimens of each species other than trees have been retained to illustrate the range of variation. The surplus material has been deposited in the University's herbarium except for Cunningham's special collections which have been retained to keep them intact. Only one intensive collection has been made recently - in the Kejimikujik National Park in 1969 by C. A. Hewson and R. M. Strang. Other material has been added sporadically from collections of new or interesting specimens by other field staff, notably Dr. A. Jablanczy and H. G. MacGillivray.

The lists presented here are incomplete in that 38 lichens specimens, 25 Sphagnum spp. and 25 other mosses are awaiting identification or verification. It is intended that amendments to the lists will be produced from time to time.

The Herbarium and this catalogue are arranged according to Gray's system of classification. The Appendix of common names is arranged alphabetically.

I am greatly indebted to the Regional Editor, G.C.R. Croome, for his help in preparing this Catalogue for publication.

1 Cunningham, G. C. 1958. Maritimes District Herbarium (Project M 223) - Progress Report. Can. Dep. N. Aff. Nat. Resources, Forest. Br., Maritimes Dist., Fredericton, N.B. Mimeo rep.

Bibliography

- Fink, B. 1960. The Lichen Flora of the United States. Univ. Michigan Press.
- Nearing, G. G. 1947. The Lichen Book. P. O. Box 338, Ridgewood, New Jersey.
- Schuster, R. M. 1966. The Hepaticae and Anthocerotae of North America. Vols I & II. Columbia Univ. Press.
- Grout, A. J. 1940. Moss Flora of North America. Vols. I-III. Published by the author.
- Erskine, J. S. 1969. An Introductory Moss Flora of Nova Scotia. Occas. Pap. 6, Sci. Ser. 4, Nova Scotia Mus., Halifax.
- Gray, A. 1950. Manual of Botany. 8th ed. (revised M. L. Fernald) Amer. Book Co., N. Y.
- Rehder, A. 1949. Bibliography of Cultivated Trees and Shrubs. Arnold Arboretum of Harvard Univ., Mass., U. S. A.
- Roland, A. E. and E. C. Smith. 1964. The Flora of Nova Scotia - Part I. Proc. Nova Scotian Inst. Sci. 26(2):3-238.
- Roland, A. E. and E. C. Smith. 1969. The Flora of Nova Scotia - Part II. Proc. Nova Scotian Inst. Sci. 26(4):277-743.

NAME

QUANTITY

Lichens

<i>Peltigera aphthosa</i> (L.) Willd.	2
<i>Baeomyces roseus</i> Pers.	1
<i>Cladonia alpestris</i> (L.) Rabenh.	5
<i>Cladonia cariosa</i> (Ach.) Spreng.	1
<i>Cladonia cenotea</i> (Ach.) Schaer.	1
<i>Cladonia crispata</i> (Ach.) Flot.	2
<i>Cladonia cristatella</i> Tuck.	2
<i>Cladonia furcata</i> (Huds.) Schrad. var. <i>scabriuscula</i> (Del.) Vainio	1
<i>Cladonia gracilis</i> (L.) Willd.	2
<i>Cladonia rangiferina</i> (L.) Web.	4
<i>Cladonia sylvatica</i> (L.) Hoffm. var. <i>sylvestris</i> (Oed.) Vainio	5
<i>Cladonia uncialis</i> (L.) Hoffm.	1
<i>Cladonia verticillata</i> Hoffm.	1
<i>Stereocaulon tomentosum</i> E.Fries	1
<i>Cyrophora muhlenbergii</i> Ach.	1
<i>Parmelia centrifuga</i> (L.) Ach.	1
<i>Parmelia conspersa</i> (Ehrh.) Ach.	1
<i>Cetraria islandica</i> (L.) Ach.	1
<i>Alectoria divergens</i> (Ach.) Nyl.	1
<i>Usnea barbata</i> (L.) Wigg.	1
<i>Usnea florida</i> (L.) Web.	1

<u>FAMILY</u>	<u>NAME</u>	<u>QUANTITY</u>
	BRYOPHYTA	
	<u>Hepaticae</u>	
Ptilidiaceae	Ptilidium ciliare (L.) Hampe	3
	Ptilidium pulcherrimum (Web.) Hampe	1
	Trichocolea tomentella (Ehrh.) Dumort. corr. Nees	1
Lepidoziaceae	Lepidozia reptans (L.) Dumort.	2
	Bazzania trilobata (L.) S.F.Gray	6
Calypogeiaceae	Calypogeia trichomanis (L.) Corda	1
Lophoziaceae	Lophozia excisa (Dicks.) Dumort.	1
	Lophozia incisa (Schrad.) Dumort.	1
Jungermanniaceae	Solenostoma gracillimum (Smith) Schust.	1
Scapaniaceae	Scapania irrigua (Nees.) Dumort.	1
	Scapania nemorosa (L.) Dumort.	1
Lophocoleaceae	Lophocolea heterophylla (Schrad.) Dumort.	1
	Geocalyx graveolens (Schrad.) Nees	1
Cephaloziaceae	Nowellia curvifolia (Dicks.) Mitt.	1
	Cladopodiella fluitans (Nees) Joerg.	1
Radulaceae	Radula complanata (L.) Dumort.	1
Porellaceae	Porella platyphylloidea (Schwein.) Lindb.	1
Frullaniaceae	Frullania asagrayana Mont.	1
	Frullania oakesiana Aust.	1
Dilaenaceae	Pellia epiphylla (L.) Corda	1
Aneuraceae	Riccardia latifrons Lindb.	1
Conocephalaceae	Conocephallum conicum (L.) Wiggers	3
Marchantiaceae	Marchantia polymorpha L.	1

<u>FAMILY</u>	<u>NAME</u>	<u>QUANTITY</u>
	<u>Musci</u>	
Sphagnaceae	Sphagnum acutifolium Ehrh.	1
	Sphagnum capillaceum (Weiss.) Schrank	4
	Sphagnum compactum DC.	1
	Sphagnum cuspidatum Ehrh.	1
	Sphagnum flavicomans (Card.) Warnst.	1
	Sphagnum fuscum (Schimp.) H.Klingr.	1
	Sphagnum imbricatum Hornsch.	1
	Sphagnum magellanicum Brid.	1
	Sphagnum palustre L.	2
	Sphagnum pulchrum (Lindb.) Warnst.	1
	Sphagnum robustum (Russ.) Röhl.	1
	Sphagnum squarrosum Crome	5
	Sphagnum subsecundum Nees	1
	Sphagnum torreyanum Sull.	1
Tetraphidaceae	Tetraphis pellucida Hedw.	3
Polytrichaceae	Polytrichum commune Hedw.	6
	Polytrichum juniperinum Hedw.	3
	Polytrichum ohioense Ren. & Card.	1
	Polytrichum piliferum Hedw.	3
	Pogonatum pensilvanicum (Hedw.) Paris	1
	Pogonatum urnigerum (Hedw.) Beauv.	1
Ditrichaceae	Trematodon ambiguus (Hedw.) Hornsch.	2
	Ceratodon purpureus (Hedw.) Brid.	2
	Ditrichum lineare (Sw.) Lindb.	1
	Ditrichum pusillum (Hedw.) E.G.Britton	2
Dicranaceae	Dicranella heteromalla (Hedw.) Schimp.	2
	Oncophorus wahlenbergii Brid.	1
	Dicranum bergeri Bland.	1
	Dicranum drummondii C.Muell.	1

<u>FAMILY</u>	<u>NAME</u>	<u>QUANTITY</u>
Dicranaceae	Dicranum fuscescens Turn.	1
	Dicranum rugosum (Hoffm.) Brid.	5
	Dicranum scoparium (L.) Hedw.	2
Leucobryaceae	Leucobryum glaucum (Hedw.) Schimp.	5
Grimmiaceae	Hedwigia ciliata (Ehrh.) Hedw.	1
Funariaceae	Funaria hygrometrica (L.) Hedw.	2
Splachnaceae	Splachnum ampullaceum (L.) Hedw.	1
Orthotrichaceae	Ulota crispa (Hedw.) Brid.	2
	Ulota ludwigii Brid.	2
Aulacomniaceae	Aulacomnium palustre (Web. & Mohr) Schwaegr.	3
Bartramiaceae	Philonotis fontana Brid.	1
Bryaceae	Pohlia nutans (Schreb.) Lindb.	1
	Pohlia pulchella (Hedw.) Lindb.	1
	Bryum caespiticium L.	1
Mniaceae	Mnium affine Bland.	1
	Mnium cuspidatum (L.) Leyss.	2
	Mnium hornum L.	2
	Mnium medium B. & S.	1
	Mnium punctatum (L.) Hedw.	2
Hypnaceae	Climacium americanum Brid.	1
	Climacium dendroides (L.) Web. & Mohr	6
	Brachythecium rutabulum (L.) B. & S.	1
	Brachythecium salebrosum (Hoffm.) B. & S.	1
	Brachythecium starkei (Brid.) B. & S.	2
	Calliergon stramineum (Dicks., Brid.) Kindb.	1
	Calliergonella schreberi (Willd., B. & S.) Grout (= Pleurozium schreberi Mitt.)	5
	Drepanocladus fluitans (L., Hedw.) Warnst.	1
	Hylocomium pyrenaicum (Spruce) Lindb.	6
	Hylocomium splendens (Hedw.) B. & S.	4
	Hylocomium umbratum (Ehrh., Hedw.) B. & S.	11
	Rhytidiadelphus squarrosus (L., Hedw.) Warnst.	6
Rhytidiadelphus triquetrus (L., Hedw.) Warnst.	9	

<u>FAMILY</u>	<u>NAME</u>	<u>QUANTITY</u>
Hypnaceae	Hypnum crista-castrensis Hedw.	4
	Hypnum cupressiforme (L.) Hedw.	1
	Hypnum imponens Hedw.	4
	Hypnum reptile Mx.	1
	Brotherella recurvans (Mx.) Fleisch.	2
	Heterophyllum haldanianum (Grev.) Kindb.	3
	Plagiothecium denticulatum (L., Hedw.) B. & S.	1
	Plagiothecium pulchellum (Dicks., Hedw.) B. & S.	1
	Plagiothecium turfaceum (Lindb.) Lindb.	2
Leskeaceae	Thelia hirtella (Hedw.) Sull.	1
	Thuidium delicatulum (L., Hedw.) Mitt.	4
	Heterocladium squarrosulum (Voit) Lindb.	1
Neckeraceae	Neckera pennata (L.) Hedw.	1

<u>FAMILY</u>	<u>NAME</u>	<u>QUANTITY</u>
PTERIDOPHYTA		
Equisetaceae	<i>Equisetum arvense</i> L.	3
	<i>Equisetum fluviatile</i> L.	2
	<i>Equisetum hyemale</i> L.	4
	<i>Equisetum pratense</i> Ehrh.	1
	<i>Equisetum scirpoides</i> Michx.	2
	<i>Equisetum sylvaticum</i> L.	5
Lycopodiaceae	<i>Lycopodium annotinum</i> L.	6
	<i>Lycopodium clavatum</i> L.	4
	<i>Lycopodium complanatum</i> L.	6
	<i>Lycopodium inundatum</i> L.	5
	<i>Lycopodium lucidulum</i> Michx.	4
	<i>Lycopodium obscurum</i> L.	5
	<i>Lycopodium sabinaefolium</i> Willd.	2
	<i>Lycopodium selago</i> L.	1
	<i>Lycopodium tristachyum</i> Pursh	6
Selaginellaceae	<i>Selaginella rupestris</i> (L.) Spring	1
Isoetaceae	<i>Isoetes muricata</i> Dur.	1
Ophioglossaceae	<i>Botrychium multifidum</i> (Gmel.) Rupr.	2
	<i>Botrychium virginianum</i> (L.) Sw.	4
Osmundaceae	<i>Osmunda cinnamomea</i> L.	4
	<i>Osmunda claytoniana</i> L.	3
	<i>Osmunda regalis</i> L.	6
Schizaeaceae	<i>Schizaea pusilla</i> Pursh	1
Polypodiaceae	<i>Woodsia ilvensis</i> (L.) R.Br.	2
	<i>Cystopteris bulbifera</i> (L.) Bernh.	4
	<i>Cystopteris fragilis</i> (L.) Bernh.	3
	<i>Pteretis pensylvanica</i> (Willd.) Fern.	3
	<i>Onoclea sensibilis</i> L.	3
	<i>Gymnocarpium dryopteris</i> (L.) Newm.	4
	<i>Dryopteris cristata</i> (L.) Gray	4
	<i>Dryopteris filix-mas</i> (L.) Schott	1
	<i>Dryopteris goldiana</i> (Hook.) Gray	2

<u>FAMILY</u>	<u>NAME</u>	<u>QUANTITY</u>
Polypodiaceae	<i>Dryopteris hexagonoptera</i> (Michx.) Christens.	1
	<i>Dryopteris marginalis</i> (L.) Gray	3
	<i>Dryopteris noveboracensis</i> (L.) Gray	3
	<i>Dryopteris spinulosa</i> (O.F.Muell.) Watt	5
	<i>Dryopteris spinulosa</i> (O.F.Muell.) Watt var. <i>americana</i> (Fisch.) Fern.	3
	<i>Dryopteris spinulosa</i> (O.F.Muell.) Watt var. <i>fructuosa</i> (Gilbert) Trudell	3
	<i>Dryopteris spinulosa</i> (O.F.Muell.) Watt var. <i>intermedia</i> (Muhl.) Underw.	4
	<i>Dryopteris thelypteris</i> (L.) Gray var. <i>pubescens</i> (Lawson) Nakai	2
	<i>Thelypteris phegopteris</i> (L.) Slossens	4
	<i>Polystichum acrostichoides</i> (Michx.) Schott	3
	<i>Polystichum braunii</i> (Spencer) Fee var. <i>purshii</i> Fern.	3
	<i>Dennstaedtia punctilobula</i> (Michx.) Moore	4
	<i>Athyrium filix-femina</i> (L.) Roth var. <i>michauxii</i> (Spreng.) Farw.	7
	<i>Athyrium pycnocarpon</i> (Spreng.) Tidestr.	1
	<i>Athyrium thelypteroides</i> (Michx.) Desv.	3
	<i>Woodwardia virginica</i> (L.) Sm.	1
	<i>Adiantum pedatum</i> L.	3
	<i>Pteridium aquilinum</i> (L.) Kuhn var. <i>latiusculum</i> (Desv.) Underw.	4
	<i>Polypodium virginianum</i> L.	4

<u>FAMILY</u>	<u>NAME</u>	<u>QUANTITY</u>
	SPERMATOPHYTA	
	<u>Gymnospermae</u>	
Taxaceae	Taxus canadensis Marsh.	3
Pinaceae	Abies alba Mill.	1
	Abies amabilis (Loud.) Forbes	2
	Abies balsamea (L.) Mill.	8
	Abies balsamea (L.) Mill. var. phanerolepis (Fern.) Rehd.	6
	Abies cephalonica Loud.	1
	Abies cilicica (Ant. & Kotschy) Carr.	1
	Abies cilicica x A. nordmanniana	1
	Abies concolor (Gord.) Hoopes	3
	Abies fargesii Franch.	1
	Abies fraseri (Pursh) Poir.	1
	Abies holophylla Maxim.	4
	Abies homolepis Sieb. & Zucc.	3
	Abies koreana Wils.	1
	Abies lasiocarpa (Hook.) Nutt.	1
	Abies mariesii Mast.	2
	Abies mayriana Miyabe & Kudo	2
	Abies nephrolepis (Trautv.) Maxim.	1
	Abies nordmanniana (Stev.) Spach	3
	Abies procera Rehd.	1
	Abies sachalinensis (Schmidt) Mast.	2
	Abies sachalinensis (Schmidt) Mast. var. nemorensis Mayr	1
	Abies veitchii Lindl.	8
	Pseudotsuga menziesii (Mirb.) Franco	2
	Tsuga canadensis (L.) Carr.	4
	Picea abies (L.) Karst.	3
	Picea engelmanni (Parry) Engelm.	3
	Picea glauca (Moench) Voss	13
	Picea glehnii (Schmidt) Mast.	1

<u>FAMILY</u>	<u>NAME</u>	<u>QUANTITY</u>
Pinaceae	<i>Picea jezoensis</i> (Sieb. & Zucc.) Carr.	4
	<i>Picea mariana</i> (Mill.) BSP.	16
	<i>Picea omorika</i> (Pancic) Purkyne	1
	<i>Picea orientalis</i> (L.) Link	2
	<i>Picea rubens</i> Sarg.	4
	<i>Picea sitchensis</i> (Bong.) Carr.	2
	<i>Larix decidua</i> Mill.	1
	<i>Larix laricina</i> (Du Roi) K.Koch	4
	<i>Larix leptolepis</i> (Sieb. & Zucc.) Gordon	1
	<i>Pinus contorta</i> Dougl. ex Loud.	1
	<i>Pinus divaricata</i> (Ait.) Dumont. (= <i>P. banksiana</i> Lamb.)	18
	<i>Pinus echinata</i> Mill.	1
	<i>Pinus resinosa</i> Ait.	1
	<i>Pinus rigida</i> Mill.	2
	<i>Pinus strobus</i> L.	3
	<i>Thuja occidentalis</i> L.	8
	<i>Juniperus communis</i> L. var. <i>depressa</i> Pursh	6
	<i>Juniperus horizontalis</i> Moench	3

<u>FAMILY</u>	<u>NAME</u>	<u>QUANTITY</u>
SPERMATOPHYTA		
'Angiospermae - <u>Monocotyledoneae</u>		
Typhaceae	Typha angustifolia L.	3
	Typha latifolia L.	1
Sparganiaceae	Sparganium angustifolium Michx.	1
	Sparganium chlorocarpum Rydb.	5
	Sparganium fluctuans (Morong) Robins.	2
	Sparganium minimum (Hartm.) Fries	1
Zosteraceae	Potamogeton nodosus Poir.	1
	Ruppia maritima L.	1
Najadaceae	Najas flexilis (Willd.) Rostk. & Schmidt	1
Juncaginaceae	Scheuchzeria palustris L. var. americana Fern.	1
	Triglochin maritima L.	3
Alismataceae	Alisma triviale Pursh	1
	Sagittaria latifolia Willd.	3
Gramineae (Festucae)	Bromus ciliatus L.	4
	Bromus inermis Leyss.	2
	Schizachne purpurascens (Torr.) Swallen	4
	Festuca capillata Lam.	1
	Festuca rubra L.	3
	Puccinellia maritima (Huds.) Parl.	1
	Glyceria borealis (Nash) Batchelder	3
	Glyceria canadensis (Michx.) Trin.	4
	Glyceria fernaldii (Hitchc.) St. John	2
	Glyceria grandis S.Wats.	3
	Glyceria laxa Scribn.	2
	Glyceria melicaria (Michx.) F.T. Hubbard	3
	Glyceria obtusa (Muhl.) Trin.	2
	Glyceria striata (Lam.) Hitchc.	3
	Poa compressa L.	1
	Poa nemoralis L.	1
	Poa palustris L.	3
	Poa pratensis L.	3

<u>FAMILY</u>	<u>NAME</u>	<u>QUANTITY</u>
Gramineae (Festucae)	Poa saltuensis Fern. & Wieg.	1
	Dactylis glomerata L.	1
(Hordeae)	Catabrosa aquatica (L.) Beauv.	1
	Distichlis spicata (L.) Greene	1
	Agropyron repens (L.) Beauv.	6
	Agropyron trachycaulum (Link) Malte	4
	Lolium multiflorum Lam.	1
	Hordeum jubatum L.	1
	Elymus canadensis L.	2
	Elymus mollis Trin.	1
	Elymus virginicus L.	5
	Elymus wiegandii Fern.	2
(Aveneae)	Holcus lanatus L.	1
	Trisetum melicoides (Michx.) Vasey	2
	Trisetum spicatum (L.) Richter	1
	Deschampsia caespitosa (L.) Beauv.	2
	Deschampsia flexuosa (L.) Trin.	3
	Danthonia compressa Aust.	1
	Danthonia spicata (L.) Beauv.	4
(Agrostideae)	Sporobolus asper (Michx.) Kunth	2
	Calamagrostis canadensis (Michx.) Nutt.	5
	Calamagrostis pickeringii Gray	3
	Ammophila breviligulata Fern.	1
	Agrostis alba L.	5
	Agrostis borealis Hartm.	1
	Agrostis canina L.	1
	Agrostis geminata Trin.	2
	Agrostis perennans (Walt.) Tuckerm.	3
	Agrostis scabra Willd.	3
	Agrostis tenuis Sibth.	4
	Cinna latifolia (Trev.) Griseb.	4
	Phleum pratense L.	2
	Alopecurus aequalis Sobol.	2
	Muhlenbergia frondosa (Poir.) Fern.	4
Muhlenbergia glomerata (Willd.) Trin.	4	
Muhlenbergia mexicana (L.) Trin.	5	

<u>FAMILY</u>	<u>NAME</u>	<u>QUANTITY</u>
Gramineae	Muhlenbergia richardsonis (Trin.) Rydb.	2
	(Agrostideae) Muhlenbergia sylvatica Torr.	1
	Brachyelytrum erectum (Schreb.) Beauv. var. septentrionale Babel	4
	Oryzopsis asperifolia Michx.	3
	Milium effusum L. var. cisatlanticum Fern.	3
(Chlorideae)	Spartina alterniflora Loisel.	1
	Spartina patens (Ait.) Muhl.	1
	Spartina pectinata Link	4
(Phalarideae)	Phalaris arundinacea L.	3
	Anthoxanthum odoratum L.	3
	Hierochloe odorata (L.) Beauv.	1
(Oryzeae)	Leersia oryzoides (L.) Sw.	3
	Leersia virginica Willd.	2
(Zizanieae)	Zizania aquatica L.	2
(Paniceae)	Digitaria ischaemum (Schreb.) Muhl.	2
	Panicum boreale Nash	4
	Panicum capillare L.	5
	Panicum depauperatum Muhl.	1
	Panicum lanuginosum Ell.	3
	Echinochloa crusgalli (L.) Beauv.	3
	Echinochloa pungens (Poir.) Rydb.	2
	Setaria glauca (L.) Beauv.	2
(Andropogoneae)	Andropogon scoparius Michx.	1
Cyperaceae	Cyperus esculentus L.	1
	Dulichium arundinaceum (L.) Britt.	2
	Eleocharis ovata (Roth) R. & S.	1
	Eleocharis smallii Britt.	1
	Scirpus acutus Muhl.	1
	Scirpus atrocinctus Fern.	3
	Scirpus atrovirens Willd.	2
	Scirpus cespitosus L.	1
	Scirpus hudsonianus (Michx.) Fern.	2
	Scirpus rubrotinctus Fern.	2

<u>FAMILY</u>	<u>NAME</u>	<u>QUANTITY</u>
Cyperaceae	Eriophorum angustifolium Honckeney	3
	Eriophorum spissum Fern.	4
	Eriophorum tenellum Nutt.	2
	Eriophorum virginicum L.	4
	Eriophorum viridi-carinatum (Engelm.) Fern.	2
	Rhynchospora alba (L.) Vahl	3
	Carex adbita Bickn.	2
	Carex aenea Fern.	2
	Carex angustior Mackenz.	3
	Carex arctata Boott	3
	Carex bigelowii Torr.	2
	Carex bromoides Schkuhr	1
	Carex brunnescens (Pers.) Poir.	3
	Carex bullata Schkuhr	1
	Carex canescens L.	2
	Carex cephaloidea Dew.	2
	Carex communis Bailey	3
	Carex convoluta Mackenz.	3
	Carex crawfordii Fern.	3
	Carex crinita Lam.	
	var. gynandra (Schwein.) Schwein. & Torr.	3
	Carex cumulata (Bailey) Mackenz.	1
	Carex debilis Michx.	3
	Carex deflexa Hornem.	3
	Carex deweyana Schwein.	3
	Carex disperma Dew.	4
	Carex flava L.	3
	Carex folliculata L.	3
	Carex gynocrates Wormsk.	1
	Carex houghtonii Torr.	2
Carex interior Bailey	2	
Carex intumescens Rudge	4	
Carex lasiocarpa Ehrh.		
var. americana Fern.	1	

<u>FAMILY</u>	<u>NAME</u>	<u>QUANTITY</u>
Cyperaceae	Carex lenticularis Michx.	
	" var. blakei Dew.	2
	Carex leptalea Wahlenb.	2
	Carex leptonervia Fern.	3
	Carex lurida Wahlenb.	3
	Carex michauxiana Boeckl.	1
	Carex nigra (L.) Reichard	2
	Carex novae-angliae Schwein.	3
	Carex oligosperma Michx.	2
	Carex ormostachya Wieg.	1
	Carex pallescens L.	
	var. neogaea Fern.	3
	Carex pauciflora Lightf.	2
	Carex paupercula Michx.	3
	Carex peckii Howe	3
	Carex pedunculata Muhl.	3
	Carex plantaginea Lam.	1
	Carex prairiea Dew.	2
	Carex projecta Mackenz.	4
	Carex radiata (Wahlenb.) Dew.	1
	Carex retrorsa Schwein.	3
	Carex rosea Schkuhr	1
	Carex rostrata Stokes	2
	Carex sartwellii Dew.	1
	Carex scabrata Schwein.	3
	Carex scoparia Schkuhr	4
	Carex silicea Olney	1
	Carex stipata Muhl.	3
	Carex stricta Lam.	1
	Carex tonsa (Fern.) Bickn.	3
	Carex torta Boott	2
	Carex tribuloides Wahlenb.	3
	Carex trisperma Dew.	3
	Carex vaginata Tausch	3
	Carex vesicaria L.	2
Carex wiegandii Mackenz.	1	

<u>FAMILY</u>	<u>NAME</u>	<u>QUANTITY</u>	
Araceae	<i>Arisaema atrorubens</i> (Ait.) Blume	3	
	<i>Arisaema stewardsonii</i> Britt.	3	
	<i>Symplocarpus foetidus</i> (L.) Nutt.	1	
	<i>Acorus calamus</i> L.	1	
Lemnaceae	<i>Lemna minor</i> L.	1	
Xyridaceae	<i>Xyris montana</i> Ries	1	
Eriocaulaceae	<i>Eriocaulon septangulare</i> With.	2	
Pontederiaceae	<i>Pontederia cordata</i> L.	3	
Juncaceae	<i>Juncus brevicaudatus</i> (Englem.) Fern.	2	
	<i>Juncus effusus</i> L.	3	
	<i>Juncus tenuis</i> Willd.	4	
	<i>Luzula acuminata</i> Raf.	2	
	<i>Luzula multiflora</i> (Retz.) Lejeune	4	
	<i>Luzula parviflora</i> (Ehrh.) Desv.	4	
	Liliaceae	<i>Tofieldia glutinosa</i> (Michx.) Pers.	2
		<i>Veratrum viride</i> Ait.	4
		<i>Uvularia sessilifolia</i> L.	3
		<i>Allium schoenoprasum</i> L.	2
<i>Lilium canadense</i> L.		1	
<i>Erythronium americanum</i> Ker		4	
<i>Clintonia borealis</i> (Ait.) Raf.		3	
<i>Smilacina racemosa</i> (L.) Desf.		4	
<i>Smilacina stellata</i> (L.) Desf.		2	
<i>Smilacina trifolia</i> (L.) Desf.		3	
<i>Maianthemum canadense</i> Desf.		3	
<i>Streptopus amplexifolius</i> (L.) DC. var. <i>americanus</i> Schultes		3	
<i>Streptopus roseus</i> Michx.		4	
<i>Polygonatum pubescens</i> (Willd.) Pursh		3	
<i>Convallaria majalis</i> L.		1	
<i>Medeola virginiana</i> L.		4	
<i>Trillium cernuum</i> L.		3	
<i>Trillium erectum</i> L.		3	
<i>Trillium undulatum</i> Willd.		5	
<i>Amilax herbacea</i> L.		4	

<u>FAMILY</u>	<u>NAME</u>	<u>QUANTITY</u>
Liliaceae	Smilax rotundifolia L.	1
Iridaceae	Sisyrinchium angustifolium Mill.	1
	Sisyrinchium atlanticum Bickn.	3
	Sisyrinchium montanum Greene	3
	Iris versicolor L.	1
Orchidaceae	Cypridium acaule Ait.	6
	Cypridium calceolus L.	4
	Cypridium reginae Walt.	1
	Orchis rotundifolia Banks	3
	Orchis spectabilis L.	1
	Habenaria blephariglottis (Willd.) Hook.	3
	Habenaria clavellata (Michx.) Spreng.	4
	Habenaria dilatata (Pursh) Hook.	3
	Habenaria fimbriata (Ait.) R.Br.	2
	Habenaria hookeri Torr.	3
	Habenaria hyperborea (L.) R.Br.	3
	Habenaria lacera (Michx.) Lodd.	3
	Habenaria obtusata (Pursh) Richards.	3
	Habenaria orbiculata (Pursh) Torr.	4
	Habenaria psychodes (L.) Spreng.	2
	Pogonia ophioglossoides (L.) Ker	2
	Calopogon pulchellus (Salisb.) R.Br.	3
	Arethusa bulbosa L.	1
	Spiranthes cernua (L.) Richard	2
	Spiranthes lacera Raf.	4
	Spiranthes romanzoffiana Cham.	3
	Goodyera repens (L.) R.Br.	
	var. ophioides Fern.	3
	Goodyera tessellata Lodd.	3
	Listera convallarioides (Sw.) Nutt.	3
	Listera cordata (L.) R.Br.	3
	Corallorhiza maculata Raf.	3
	Corallorhiza trifida Chatelain	4
	Malaxis unifolia Michx.	3
	Calypso bulbosa (L.) Oakes	4

<u>FAMILY</u>	<u>NAME</u>	<u>QUANTITY</u>
<u>Angiospermae-Dicotyledoneae</u>		
Salicaceae	Salix alba L.	1
	Salix amygdaloides Anderss.	2
	Salix babylonica L.	1
	Salix bebbiana Sarg.	9
	Salix candida Flugge	2
	Salix cordata Michx.	6
	Salix discolor Muhl.	5
	Salix glaucophylloides Fern.	1
	Salix gracilis Anderss.	3
	Salix humilis Marsh.	2
	Salix interior Rowlee	2
	Salix lucida Muhl. (Type)	2
	Salix lucida Muhl. var. intonsa Fern.	5
	Salix pyrifolia Anderss.	9
	Salix rigida Muhl.	4
	Salix sericea Marsh.	1
	Salix viminalis L.	1
	Populus alba L.	3
	Populus balsamifera L.	4
	Populus grandidentata Michx.	1
Populus tremuloides Michx.	5	
Populus hybrids	3	
Myricaceae	Myrica gale L.	2
	Myrica pensylvanica Loisel.	3
	Comptonia peregrina (L.) Coult.	3
Juglandaceae	Juglans cinerea L.	2
	Carya species	1
Corylaceae	Corylus cornuta Marsh.	6
	Ostrya virginiana (Mill.) K.Koch	6
	Carpinus caroliniana Walt. var. virginiana (Marsh.) Fern.	2
	Betula alba L. (= B. pubescens Ehrh.)	3

<u>FAMILY</u>	<u>NAME</u>	<u>QUANTITY</u>
Corylaceae	Betula alleghaniensis Britt. (= B. lutea Michx. f.)	10
	Betula borealis Spach	7
	Betula caerulea-grandis Blanch.	10
	Betula glandulosa Michx.	5
	Betula hallii Howell	1
	Betula lenta L.	2
	Betula michauxii Spach	2
	Betula neoalaskana Sarg.	14
	Betula nigra L.	2
	Betula occidentalis Hook.	5
	Betula papyrifera Marsh.	24
	Betula papyrifera Marsh. var. cordifolia (Regel) Fern.	13
	Betula papyrifera Marsh. var. macrostachya Fern.	7
	Betula papyrifera Marsh. var. pensilis Fern.	2
	Betula pendula Roth	10
	Betula populifolia Marsh.	13
	Betula pumila L.	16
	Betula hybrids	7
	Alnus crispa (Ait.) Pursh (Type)	2
	Alnus crispa (Ait.) Pursh var. mollis Fern.	9
	Alnus rugosa (Du Roi) Spreng.	4
	Alnus serrulata (Ait.) Willd.	2
	Alnus hybrids	1
Fagaceae	Fagus grandifolia Ehrh.	5
	Quercus borealis Michx. f. (= Q. rubra L.)	4
	Quercus macrocarpa Michx.	4
	Quercus robur L.	1
Ulmaceae	Ulmus americana L.	3
	Celtis occidentalis L.	1
Cannabinaceae	Humulus lupulus L.	1
Urticaceae	Urtica gracilis Ait.	3

<u>FAMILY</u>	<u>NAME</u>	<u>QUANTITY</u>	
Urticaceae	<i>Urtica procera</i> Muhl.	2	
	<i>Laportea canadensis</i> (L.) Wedd.	3	
	<i>Pilea pumila</i> (L.) Gray	1	
Santalaceae	<i>Comandra richardsiana</i> Fern.	3	
	<i>Geocaulon lividum</i> (Richards.) Fern.	4	
Loranthaceae	<i>Arceuthobium pusillum</i> Peck	4	
Aristolochiaceae	<i>Asarum canadense</i> L.	3	
Polygonaceae	<i>Rumex acetosella</i> L.	3	
	<i>Rumex orbiculatus</i> Gray	1	
	<i>Polygonum arifolium</i> L. var. <i>pubescens</i> (Keller) Fern.	1	
	<i>Polygonum cilinode</i> Michx.	3	
	<i>Polygonum convolvulus</i> L.	1	
	<i>Polygonum hydropiper</i> L.	1	
	<i>Polygonum hydropiperoides</i> Michx.	2	
	<i>Polygonum lapsthifolium</i> L.	1	
	<i>Polygonum natans</i> Eaton	4	
	<i>Polygonum pensylvanicum</i> L.	1	
	<i>Polygonum ramosissimum</i> Michx. forma <i>atlanticum</i> Robins.	1	
	<i>Polygonum sagittatum</i> L.	3	
	Chenopodiaceae	<i>Atriplex glabriuscula</i> Edmondston	1
		<i>Atriplex patula</i> L.	1
<i>Salicornia europaea</i> L.		1	
<i>Suaeda maritima</i> (L.) Dumort.		1	
<i>Suaeda richii</i> Fern.		1	
<i>Salsola kali</i> L.		2	
Amaranthaceae	<i>Amaranthus retroflexus</i> L.	1	
Portulacaceae	<i>Portulaca oleracea</i> L.	2	
	<i>Claytonia caroliniana</i> Michx.	4	
Caryophyllaceae	<i>Spergularia marina</i> (L.) Griseb.	2	
	<i>Spergularia rubra</i> (L.) J. & C. Presl.	3	
	<i>Spergula arvensis</i> L.	2	
	<i>Arenaria lateriflora</i> L.	3	

<u>FAMILY</u>	<u>NAME</u>	<u>QUANTITY</u>	
Caryophyllaceae	Arenaria peploides L. var. robusta Fern.	1	
	Stellaria calycantha (Ledeb.) Bong.	2	
	Stellaria graminea L.	2	
	Stellaria media (L.) Cyrillo	1	
	Cerastium beeringianum C. & S.	1	
	Cerastium vulgatum L.	2	
	Silene cucubalus Wibel	2	
	Dianthus deltoides L.	2	
	Nymphaeaceae	Nuphar variegatum Engelm.	2
		Nymphaea odorata Ait.	1
Ranunculaceae	Ranunculus abortivus L. var. acrolasius Fern.	3	
	Ranunculus acris L.	2	
	Ranunculus cymbalaria Pursh	2	
	Ranunculus pensylvanicus L. f.	1	
	Ranunculus recurvatus Poir.	3	
	Ranunculus repens L.	2	
	Ranunculus reptans L.	3	
	Ranunculus septentrionalis Poir.	3	
	Ranunculus trichophyllus Chaix	2	
	Thalictrum confine Fern.	4	
	Thalictrum polygamum Muhl.	3	
	Hepatica acutiloba DC.	1	
	Hepatica americana (DC.) Ker	2	
	Anemone canadensis L.	3	
	Anemone cylindrica Gray	2	
	Anemone quinquefolia L.	3	
	Anemone riparia Fern.	3	
	Anemone virginiana L.	1	
	Clematis virginiana L.	3	
	Caltha palustris L.	2	
Coptis trifolia (L.) Salisb. (=C. groenlandica (Oeder) Fern.)	3		

<u>FAMILY</u>	<u>NAME</u>	<u>QUANTITY</u>
Ranunculaceae	Aquilegia vulgaris L.	1
	Actaea pachypoda Ell.	2
	Actaea rubra (Ait.) Willd.	7
Berberidaceae	Caulophyllum thalictroides (L.) Michx.	4
Papaveraceae	Sanguinaria canadensis L.	2
	Dicentra cucullaria (L.) Bernh.	3
	Corydalis sempervirens (L.) Pers.	4
Cruciferae	Thlaspi arvense L.	3
	Capsella bursa-pastoris (L.) Medic.	2
	Cakile edentula (Bigel.) Hook.	3
	Raphanus raphanistrum L.	1
	Brassica nigra (L.) Koch	1
	Sisymbrium altissimum L.	1
	Hesperis matronalis L.	1
	Erysimum cheiranthoides L.	1
	Rorippa islandica (Oeder) Borbas	3
	Barbarea vulgaris R.Br.	4
	Dentaria diphylla Michx.	3
	Cardamine pensylvanica Muhl.	3
Sarraceniaceae	Sarracenia purpurea L.	8
Droseraceae	Drosera intermedia Hayne	4
	Drosera rotundifolia L.	3
Saxifragaceae	Tiarella cordifolia L.	3
	Mitella diphylla L.	1
	Mitella nuda L.	3
	Chrysosplenium americanum Schwein.	3
	Parnassia glauca Raf.	1
	Ribes americanum Mill.	3
	Ribes cynosbati L.	3
	Ribes glandulosum Grauer	3
	Ribes hirtellum Michx.	3
	Ribes lacustre (Pers.) Poir.	4
	Ribes sativum Syme	1
	Ribes triste Pall.	3

<u>FAMILY</u>	<u>NAME</u>	<u>QUANTITY</u>
Hamamelidaceae	Hamamelis virginiana L.	4
Rosaceae	Physocarpus opulifolius (L.) Maxim.	1
	Spiraea latifolia (Ait.) Borkh.	6
	Spiraea tomentosa L.	3
	Pyrus americana (Marsh.) DC.	5
	Pyrus aucuparia (L.) Gaertn.	1
	Pyrus decora (Sarg.) Hyland	3
	Aronia melanocarpa (Michx.) Ell.	3
	Aronia prunifolia (Marsh.) Rehd.	3
	Amelanchier alnifolia Nutt.	1
	Amelanchier amabilis Wieg.	1
	Amelanchier arborea (Michx. f.) Fern.	6
	Amelanchier bartramiana (Tausch) Roemer	8
	Amelanchier canadensis (L.) Medic.	3
	Amelanchier fernaldii Wieg.	2
	Amelanchier gaspensis (Wieg.) Fern. & Weath.	1
	Amelanchier humilis Wieg.	8
	Amelanchier intermedia Spach	13
	Amelanchier laevis Weig.	15
	Amelanchier lucida Fern.	8
	Amelanchier quinti-martii Lalonde	4
	Amelanchier sanguinea (Pursh) DC.	8
	Amelanchier spicata (Lam.) K.Koch	5
	Amelanchier stolonifera Wieg.	18
	Amelanchier wiegandii Nielsen	13
	Amelanchier hybrids	2
	Crataegus chrysocarpa Ashe	2
	Crataegus macrosperma Ashe	2
	Crataegus punctata Jacq.	1
	Crataegus submollis Sarg.	1
	Fragaria vesca L.	3
	Fragaria virginiana Duchesne	3
	Potentilla anserina L.	3
	Potentilla argentea L.	2

<u>FAMILY</u>	<u>NAME</u>	<u>QUANTITY</u>
Rosaceae	Potentilla arguta Pursh	3
	Potentilla canadensis L.	4
	Potentilla fruticosa L.	4
	Potentilla norvegica L.	4
	Potentilla palustris (L.) Scop.	3
	Potentilla recta L.	2
	Potentilla simplex Michx.	2
	Potentilla tridentata Ait.	3
	Geum aleppicum Jacq.	3
	Geum macrophyllum Willd.	3
	Geum rivale L.	3
	Dalibarda repens L.	3
	Agrimonia striata Michx.	2
	Sanguisorba canadensis L.	4
	Rosa acicularis Lindl.	3
	Rosa blanda Ait.	3
	Rosa cinnamomea L.	1
	Rosa johannensis Fern.	3
	Rosa micrantha Sm.	1
	Rosa nitida Willd.	1
	Rosa palustris Marsh.	1
	Rosa rugosa Thunb.	1
	Rosa virginiana Mill.	3
	Prunus depressa Pursh	2
	Prunus nigra Ait.	1
	Prunus pennsylvanica L. f.	2
	Prunus serotina Ehrh.	3
	Prunus virginiana L.	4
	Rubus acadiensis Bailey	6
	Rubus acaulis Michx.	1
	Rubus allegheniensis Porter	7
	Rubus amicalis Blanch.	6
	Rubus ammicola Blanch.	4
	Rubus arcuans Fern. & St. John	4

<u>FAMILY</u>	<u>NAME</u>	<u>QUANTITY</u>
Rosaceae	Rubus atwoodii Bailey	3
	Rubus biformispinus Blanch.	4
	Rubus canadensis L.	9
	Rubus chamaemorus L.	3
	Rubus glandicaulis Blanch.	4
	Rubus groutianus Blanch.	5
	Rubus hispidus L.	4
	Rubus junceus Blanch.	4
	Rubus malus Bailey	2
	Rubus multiformis Blanch.	7
	Rubus multilicium Bailey	7
	Rubus nigricans Rydb.	3
	Rubus notatus Bailey (? R. setosus Bigel.)	1
	Rubus occidentalis L.	5
	Rubus odoratus L.	3
	Rubus particeps Bailey (? R. arenicola Blanch.)	3
	Rubus parviflorus Nutt.	3
	Rubus pensilvanicus Poir.	1
	Rubus perinvisus Bailey	4
	Rubus plicatifolius Blanch.	4
	Rubus provincialis Bailey (? R. arcuans Fern. & St. John)	6
	Rubus pubescens Raf.	4
	Rubus quaesitus Bailey	2
	Rubus quebecensis Bailey	6
	Rubus recurvicaulis Blanch.	2
	Rubus russeus Bailey (? R. elegantulus Blanch.)	9
	Rubus setosus Bigel.	4
	Rubus strigosus Michx.	6
	Rubus tardatus Blanch.	4
	Rubus vermontanus Blanch.	6
	Rubus wheeleri Bailey	2

<u>FAMILY</u>	<u>NAME</u>	<u>QUANTITY</u>
Leguminosae	Cytisus scoparius (L.) Link	13
	Lupinus polyphyllus Lindl.	2
	Trifolium agrarium L.	2
	Trifolium arvense L.	3
	Trifolium repens L.	2
	Coronilla scirpioides (L.) Koch	2
	Desmodium canadense (L.) DC.	3
	Vicia americana Muhl.	3
	Vicia cracca L.	3
	Lathyrus japonicus Willd. var. glaber (Ser.) Fern.	1
	Lathyrus ochroleucus Hook.	2
	Lathyrus palustris L.	1
	Apios americana Medic.	1
	Amphicarpa bracteata (L.) Fern.	1
	Oxalidaceae	Oxalis corniculata L.
Oxalis europaea Jord.		2
Oxalis montana Raf.		3
Geraniaceae	Geranium bicknellii Britt.	3
	Geranium robertianum L.	2
Rutaceae	Xanthoxylum americanum Mill.	2
Polygalaceae	Polygala paucifolia Willd.	2
	Polygala senega L.	2
Euphorbiaceae	Euphorbia vermiculata Raf.	2
Callitrichaceae	Callitriche heterophylla Pursh	2
	Callitriche palustris L.	1
Empetraceae	Empetrum nigrum L.	4
	Corema conradii Torr.	3
Anacardiaceae	Rhus aromatica Ait.	2
	Rhus glabra L.	2
	Rhus radicans L.	5
	Rhus typhina L.	2
Aquifoliaceae	Ilex glabra (L.) Gray	3
	Ilex verticillata (L.) Gray	3
	Nemopanthus mucronata (L.) Trel.	5

<u>FAMILY</u>	<u>NAME</u>	<u>QUANTITY</u>
Celastraceae	Celastrus scandens L.	3
Aceraceae	Acer circinatum Pursh	1
	Acer ginnala Maxim.	1
	Acer pensylvanicum L.	4
	Acer pseudoplatanus L.	1
	Acer rubrum L.	5
	Acer saccharinum L.	3
	Acer saccharum Marsh.	4
	Acer spicatum Lam.	3
Balsaminaceae	Impatiens capensis Meerb.	3
Rhamnaceae	Rhamnus alnifolia L'Her.	2
	Rhamnus frangula L.	2
	Ceanothus americanus L.	2
Vitaceae	Vitis riparia Michx.	3
Tiliaceae	Tilia americana L.	4
Malvaceae	Malva moschata L.	3
Guttiferae	Hypericum boreale (Britt.) Bickn.	1
	Hypericum canadense L.	3
	Hypericum ellipticum Hook.	2
	Hypericum mutilum L.	2
	Hypericum perforatum L.	3
	Hypericum virginicum L.	2
Tamaricaceae	Tamarix odessana Stev. ex Bunge	1
	Tamarix gallica L.	1
Cistaceae	Hudsonia ericoides L.	3
	Hudsonia tomentosa Nutt.	2
	Lechea intermedia Leggett	2
Violaceae	Viola adunca Sm.	3
	Viola affinis Le Conte	1
	Viola blanda Willd.	2
	Viola canadensis L.	3
	Viola conspersa Reichenb.	3
	Viola cucullata Ait.	3

<u>FAMILY</u>	<u>NAME</u>	<u>QUANTITY</u>	
Violaceae	<i>Viola fimbriatula</i> Sm.	2	
	<i>Viola incognita</i> Brainerd	3	
	<i>Viola lanceolata</i> L.	3	
	<i>Viola lanceolata</i> L. var. <i>vittata</i> (Greene) Weath. & Griseb.	1	
	<i>Viola nephrophylla</i> Greene	3	
	<i>Viola pallens</i> (Banks) Brainerd	3	
	<i>Viola palustris</i> L.	1	
	<i>Viola pensylvanica</i> Michx. var. <i>leiocarpa</i> (Fern. & Wieg.) Fern.	3	
	<i>Viola pubescens</i> Ait.	4	
	<i>Viola renifolia</i> Gray var. <i>brainerdii</i> (Greene) Fern.	3	
	<i>Viola rotundifolia</i> Michx.	1	
	<i>Viola sagittata</i> Ait.	2	
	<i>Viola selkirkii</i> Pursh	3	
	<i>Viola septemloba</i> Le Conte	1	
	<i>Viola septentrionalis</i> Greene	3	
	<i>Viola sororia</i> Willd.	3	
	<i>Viola striata</i> Ait.	1	
	<i>Viola</i> hybrids	2	
	Thymelaeaceae	<i>Dirca palustris</i> L.	3
	Elaeagnaceae	<i>Shepherdia canadensis</i> (L.) Nutt.	2
Lythraceae	<i>Lythrum salicaria</i> L.	1	
Onagraceae	<i>Epilobium angustifolium</i> L.	3	
	<i>Epilobium glandulosum</i> Lehm.	3	
	<i>Epilobium hornemannii</i> Reichenb.	1	
	<i>Epilobium leptophyllum</i> Raf.	3	
	<i>Epilobium nesophilum</i> Fern.	1	
	<i>Epilobium palustre</i> L.	3	
	<i>Oenothera parviflora</i> L.	2	
	<i>Oenothera perennis</i> L.	3	
	<i>Circaea alpina</i> L.	3	
	<i>Circaea canadensis</i> Hill	1	
	<i>Circaea quadrisulcata</i> (Maxim.) Franch. & Sav. var. <i>canadensis</i> (L.) Hara	2	

<u>FAMILY</u>	<u>NAME</u>	<u>QUANTITY</u>
Haloragaceae	Myriophyllum alterniflorum DC.	2
	Myriophyllum tenellum Bigel.	1
Hippuridaceae	Hippuris vulgaris L.	1
Araliaceae	Aralia hispida Vent.	3
	Aralia nudicaulis L.	4
	Aralia racemosa L.	3
	Panax trifolius L.	2
Umbelliferae	Hydrocotyle americana L.	3
	Sanicula marilandica L.	3
	Sanicula trifoliata Bickn.	1
	Osmorhiza chilensis H. & A.	3
	Osmorhiza claytoni (Michx.) C.B. Clarke	3
	Cicuta bulbifera L.	2
	Pimpinella saxifraga L.	2
	Sium suave Walt.	2
	Ligusticum scoticum L.	3
	Conioselinum chinense (L.) BSP.	3
	Angelica atropurpurea L.	1
	Pastinaca sativa L.	1
	Heracleum maximum Bartr.	3
	Daucus carota L.	2
	Cornaceae	Cornus acadiensis Fern.
Cornus alternifolia L. f.		2
Cornus canadensis L.		3
Cornus rugosa Lam.		3
Cornus stolonifera Michx.		5
Pyrolaceae	Chimaphila umbellata (L.) Bart.	1
	Chimaphila umbellata (L.) Bart. var. cisatlantica Blake	3
	Moneses uniflora (L.) Gray	3
	Pyrola asarifolia Michx.	2
	Pyrola elliptica Nutt.	3
	Pyrola minor L.	1
	Pyrola rotundifolia L.	4
Pyrola secunda L.	4	

<u>FAMILY</u>	<u>NAME</u>	<u>QUANTITY</u>
Pyrolaceae	<i>Pyrola virens</i> Schweigger	4
	<i>Monotropa hypopithys</i> L.	3
	<i>Monotropa uniflora</i> L.	3
Ericaceae	<i>Ledum groenlandicum</i> Oeder	5
	<i>Rhododendron canadense</i> (L.) Torr.	4
	<i>Rhododendron maximum</i> L.	1
	<i>Kalmia angustifolia</i> L.	6
	<i>Kalmia polifolia</i> Wang.	4
	<i>Andromeda glaucophylla</i> Link	3
	<i>Chamaedaphne calyculata</i> (L.) Moench	3
	<i>Epigaea repens</i> L.	
	var. <i>glabrifolia</i> Fern.	3
	<i>Gaultheria hispidula</i> (L.) Muhl.	3
	<i>Gaultheria procumbens</i> L.	3
	<i>Arctostaphylos uva-ursi</i> (L.) Spreng.	3
	<i>Gaylussacia baccata</i> (Wang.) K.Koch	3
	<i>Gaylussacia dumosa</i> (Andr.) T. & G.	
	var. <i>bigeloviana</i> Fern.	3
	<i>Vaccinium angustifolium</i> Ait.	4
	<i>Vaccinium corymbosum</i> L.	3
	<i>Vaccinium macrocarpon</i> Ait.	3
	<i>Vaccinium myrtilloides</i> Michx.	3
	<i>Vaccinium ovalifolium</i> Sm.	1
<i>Vaccinium oxycoccus</i> L.	4	
<i>Vaccinium vitis-idaea</i> L.		
var. <i>minus</i> Lodd.	3	
Primulaceae	<i>Lysimachia ciliata</i> L.	3
	<i>Lysimachia terrestris</i> (L.) BSP.	3
	<i>Lysimachia thyrsoflora</i> L.	1
	<i>Trientalis borealis</i> Raf.	4
	<i>Glaux maritima</i> L.	
var. <i>obtusifolia</i> Fern.	1	
Plumbaginaceae	<i>Limonium nashii</i> Small	1

<u>FAMILY</u>	<u>NAME</u>	<u>QUANTITY</u>
Oleaceae	Fraxinus americana L.	4
	Fraxinus excelsior L.	2
	Fraxinus nigra Marsh.	1
	Fraxinus pennsylvanica Marsh.	2
	Fraxinus pennsylvanica Marsh. var. austini Fern.	7
	Gentianaceae	Halenia deflexa (Sm.) Griseb.
Menyanthes trifoliata L. var. minor Raf.		3
Nymphoides cordata (Ell.) Fern.		1
Apocynaceae	Apocynum androsaemifolium L.	3
	Apocynum cannabinum L. var. hypericifolium Gray	3
Convolvulaceae	Cuscuta cephalanthi Engelm.	1
Boraginaceae	Myosotis laxa Lehm.	1
	Mertensia paniculata (Ait.) G. Don	2
Verbenaceae	Verbena hastata L.	2
	Verbena urticifolia L.	2
Labiatae	Scutellaria churchilliana Fern.	1
	Scutellaria epilobiifolia A. Hamilton	3
	Scutellaria lateriflora L.	3
	Glechoma hederacea L.	1
	Dracocephalum parviflorum Nutt.	1
	Prunella vulgaris L.	4
	Leonurus cardiaca L.	1
	Galeopsis tetrahit L.	2
	Stachys palustris L.	2
	Satureja vulgaris (L.) Fritsch	1
	Lycopus americanus Muhl.	3
	Lycopus uniflorus Michx.	3
	Mentha arvensis L.	3
Solanaceae	Solanum dulcamara L.	1
Scrophulariaceae	Verbascum thapsus L.	1
	Linaria vulgaris Hill	1
	Chaenorrhinum minus (L.) Lange	2
	Chelone glabra L.	3

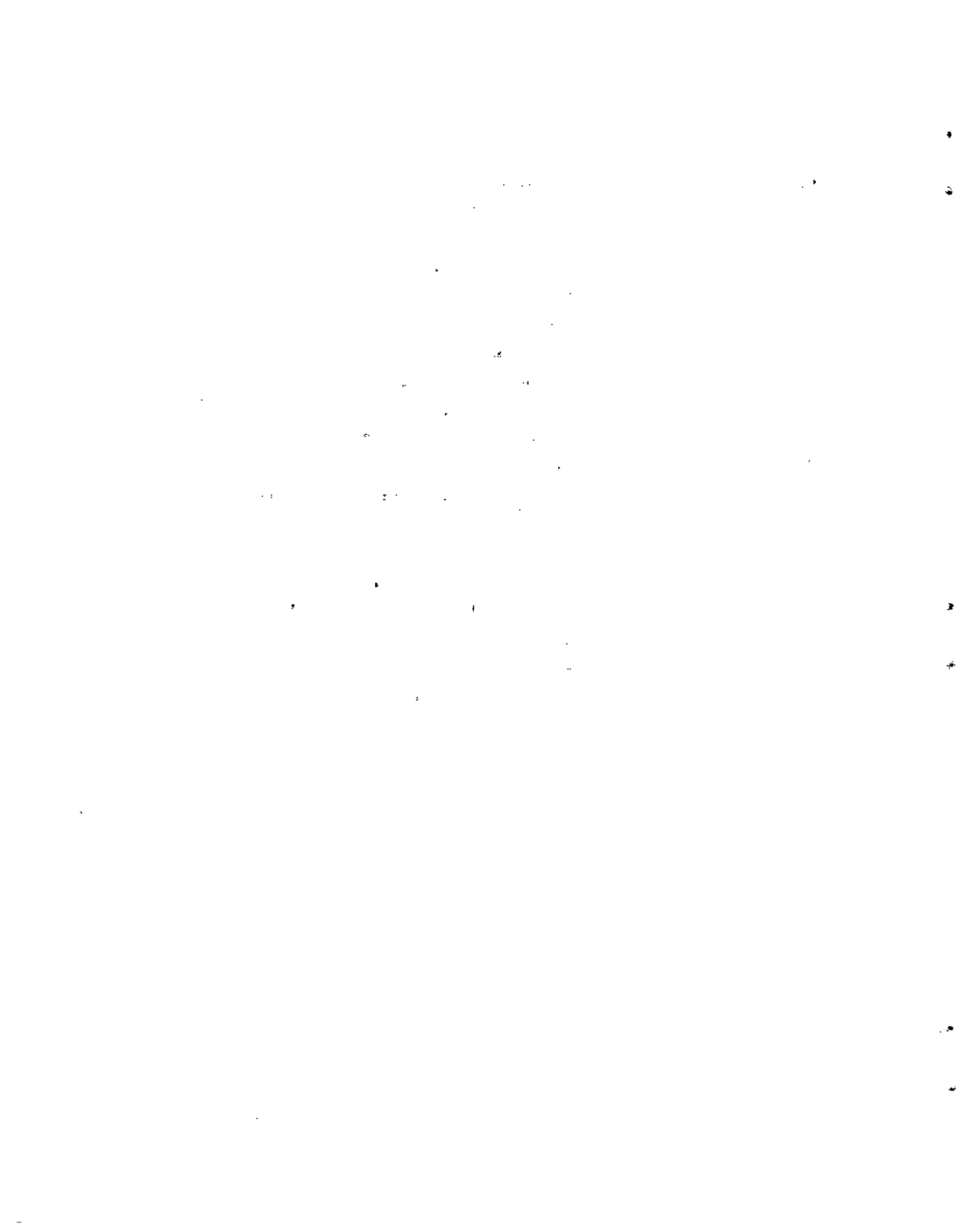
<u>FAMILY</u>	<u>NAME</u>	<u>QUANTITY</u>
Scrophulariaceae	Mimulus moschatus Dougl.	1
	Mimulus ringens L.	3
	Lindernia dubia (L.) Pennell	2
	Veronica americana (Raf.) Schwein.	3
	Veronica chamaedrys L.	1
	Veronica longifolia L.	1
	Veronica officinalis L.	5
	Veronica peregrina L.	1
	Veronica persica Poir.	1
	Veronica scutellata L.	3
	Veronica serpyllifolia L.	2
	Veronica tenella All.	3
	Gerardia tenuifolia Vahl	1
	Melampyrum lineare Desr.	4
	Euphrasia americana Wettst.	1
	Euphrasia canadensis Townsend	4
	Euphrasia rigidula Jord.	2
	Odontites serotina (Lam.) Dum.	3
	Rhinanthus crista-galli L.	1
	Orobanchaceae	Epifagus virginiana (L.) Bart.
Conopholis americana (L.) Wallr.		1
Orobanche uniflora L.		1
Lentibulariaceae	Utricularia cornuta Michx.	2
	Utricularia vulgaris L.	1
Phrymaceae	Phryma leptostachya L.	2
Plantaginaceae	Plantago lanceolata L.	3
	Plantago major L.	1
	Plantago juncooides Lam.	2
Rubiaceae	Galium asprellum Michx.	3
	Galium boreale L.	
	var. intermedium DC.	2
	Galium kamschaticum Steller	3
	Galium labradoricum Wieg.	3
	Galium palustre L.	3

<u>FAMILY</u>	<u>NAME</u>	<u>QUANTITY</u>
Rubiaceae	<i>Galium tinctorium</i> L.	3
	<i>Galium trifidum</i> L.	2
	<i>Galium triflorum</i> Michx.	4
	<i>Mitchella repens</i> L.	4
Caprifoliaceae	<i>Diervilla lonicera</i> Mill.	3
	<i>Lonicera canadensis</i> Bartr.	3
	<i>Lonicera hirsuta</i> Eaton	1
	<i>Lonicera oblongifolia</i> (Goldie) Hook.	1
	<i>Lonicera villosa</i> (Michx.) R. & S.	3
	<i>Linnaea borealis</i> L.	
	var. <i>americana</i> (Forbes) Rehd.	2
	<i>Triosteum aurantiacum</i> Bickn.	1
	<i>Viburnum acerifolium</i> L.	2
	<i>Viburnum alnifolium</i> Marsh.	3
	<i>Viburnum cassinoides</i> L.	5
	<i>Viburnum dentatum</i> L.	1
	<i>Viburnum edule</i> (Michx.) Raf.	3
	<i>Viburnum lantana</i> L.	1
	<i>Viburnum lentago</i> L.	2
	<i>Viburnum rafinesquianum</i> Schultes	1
	<i>Viburnum trilobum</i> Marsh.	4
	<i>Sambucus canadensis</i> L.	2
	<i>Sambucus pubens</i> Michx.	3
	Valerianaceae	<i>Valeriana septentrionalis</i> Rydb.
<i>Valeriana uliginosa</i> (T. & G.) Rydb.		3
Cucurbitaceae	<i>Echinocystis lobata</i> (Michx.) T. & G.	1
Campanulaceae	<i>Campanula rapunculoides</i> L.	1
	<i>Campanula rotundifolia</i> L.	3
	<i>Campanula uliginosa</i> Rydb.	1
	<i>Lobelia cardinalis</i> L.	1
	<i>Lobelia dortmanna</i> L.	2
	<i>Lobelia inflata</i> L.	3
	<i>Lobelia kalmii</i> L.	3
Compositae	<i>Eupatorium maculatum</i> L.	1
	<i>Eupatorium perfoliatum</i> L.	2

<u>FAMILY</u>	<u>NAME</u>	<u>QUANTITY</u>
Compositae	Eupatorium rugosum Houtt.	2
	Solidago altissima L.	3
	Solidago bicolor L.	4
	Solidago caesia L.	2
	Solidago canadensis L.	4
	Solidago elliotii T. & G.	3
	Solidago flexicaulis L.	4
	Solidago gigantea Ait.	4
	Solidago graminifolia (L.) Salisb.	1
	Solidago graminifolia (L.) Salisb. var. nuttallii (Greene) Fern.	4
	Solidago hispida Muhl.	5
	Solidago humilis Banks	3
	Solidago humilis Banks var. linoides (Sol.) Boivin	4
	Solidago juncea Ait.	4
	Solidago macrophylla Pursh	3
	Solidago nemoralis Ait.	4
	Solidago puberula Nutt.	5
	Solidago rugosa Ait.	7
	Solidago sempervirens L.	2
	Solidago squarrosa Muhl.	3
	Aster acuminatus Michx.	3
	Aster blakei (Porter) House	4
	Aster ciliolatus Lindl.	4
	Aster cordifolius L.	3
	Aster foliaceus L.	1
	Aster johannensis Fern.	4
	Aster junciformis Rydb.	1
	Aster laevis L.	1
	Aster lateriflorus (L.) Britt.	4
	Aster linariifolius L.	2
	Aster macrophyllus L.	5
	Aster nemoralis Ait.	4
	Aster novi-belgii L.	5

<u>FAMILY</u>	<u>NAME</u>	<u>QUANTITY</u>
Compositae	Aster puniceus L.	4
	Aster radula Ait.	5
	Aster simplex Willd.	4
	Aster simplex Willd. var. ramosissimus (T. & G.) Cronq.	3
	Aster tradescanti L.	1
	Aster umbellatus Mill.	3
	Erigeron hyssopifolius Michx.	2
	Erigeron philadelphicus L.	1
	Erigeron strigosus Muhl.	1
	Antennaria canadensis Greene	3
	Antennaria neodioica Greene	5
	Antennaria petaloidea Fern.	1
	Anaphalis margaritaceae (L.) C.B. Clarke	4
	Gnaphalium sylvaticum L.	4
	Gnaphalium uliginosum L.	1
	Ambrosia artemisiifolia L.	1
	Xanthium strumarium L.	1
	Bidens cernua L.	3
	Bidens frondosa L.	3
	Galinsoga ciliata (Raf.) Blake	1
	Achillea millefolium L.	3
	Achillea ptarmica L.	1
	Anthemis tinctoria L.	2
	Matricaria matricarioides (Less.) Porter	1
	Chrysanthemum leucanthemum L.	1
	Tanacetum huronense Nutt.	1
	Artemisia stelleriana Bess.	3
	Tussilago farfara L.	4
	Petasites palmatus (Ait.) Gray	3
	Erechtites heiracifolia (L.) Raf.	2
	Senecio aureus L.	2
	Senecio jacobaea L.	2
	Senecio pauperculus Michx.	2
Senecio sylvaticus L.	1	

<u>FAMILY</u>	<u>NAME</u>	<u>QUANTITY</u>
Compositae	Senecio viscosus L.	2
	Senecio vulgaris L.	1
	Cirsium arvense (L.) Scop.	1
	Cirsium muticum Michx.	3
	Cirsium vulgare (Savi) Tenore	3
	Centaurea nigra L.	1
	Leontodon autumnalis L.	1
	Tragopogon pratensis L.	1
	Sonchus arvensis L.	2
	Lactuca biennis (Moench) Fern.	2
	Prenanthes altissima L.	2
	Prenanthes trifoliolata (Cass.) Fern.	4
	Hieracium aurantiacum L.	3
	Hieracium canadense Michx.	3
	Hieracium florentinum All.	1
	Hieracium floribundum Wimm. & Grab.	2
	Hieracium pilosella L.	3
Hieracium pratense Tausch	3	
Hieracium scabrum Michx.	3	



APPENDIX ... Botanical and Common names

<i>Abies alba</i> Mill.	Silver fir
<i>Abies amabilis</i> (Loud.) Forbes	Amabilis fir Pacific silver fir
<i>Abies balsamea</i> (L.) Mill.	Balsam fir
<i>Abies balsamea</i> (L.) Mill. var. <i>phanerolepis</i> (Fern.) Rehd.	Bracted balsam fir
<i>Abies cephalonica</i> Loud.	Greek fir
<i>Abies cilicica</i> (Ant. & Kotschy) Carr.	Cilician fir
<i>Abies concolor</i> (Gord.) Hoopes	White fir
<i>Abies fargesii</i> Franch.	Farges fir
<i>Abies fraseri</i> (Pursh) Poir.	Fraser fir
<i>Abies holophylla</i> Maxim.	Manchurian fir
<i>Abies homolepis</i> Sieb. & Zucc.	Nikko fir
<i>Abies koreana</i> Wils.	Korean fir
<i>Abies lasiocarpa</i> (Hook.) Nutt.	Alpine fir Subalpine fir
<i>Abies mariesii</i> Mast.	Maries fir
<i>Abies nephrolepis</i> (Trautv.) Maxim.	Khingam fir
<i>Abies nordmanniana</i> (Stev.) Spach	Caucasian fir Nordmann's fir
<i>Abies procera</i> Rehd.	Red fir Noble fir
<i>Abies sachalinensis</i> (Schmidt) Mast.	Sakhalin fir
<i>Abies sachalinensis</i> (Schmidt) Mast. var. <i>nemorensis</i> Mayr	Wilson silver fir
<i>Abies veitchi</i> Lindl.	Veitch's silver fir Japanese fir
<i>Acer circinatum</i> Pursh	Vine maple
<i>Acer ginnala</i> Maxim.	Amur maple
<i>Acer pensylvanicum</i> L.	Striped maple Moosewood
<i>Acer pseudoplatanus</i> L.	Sycamore maple
<i>Acer rubrum</i> L.	Red maple Swamp maple Soft maple
<i>Acer saccharinum</i> L.	Silver maple Soft maple
<i>Acer saccharum</i> Marsh.	Sugar maple Hard maple
<i>Acer spicatum</i> Lam.	Mountain maple

<i>Achillea millefolium</i> L.	Yarrow Milfoil
<i>Achillea ptarmica</i> L.	Sneezeweed
<i>Acorus calamus</i> L.	Sweet flag Calamus
<i>Actaea pachypoda</i> Ell.	White baneberry
<i>Actaea rubra</i> (Ait.) Willd.	Red baneberry
<i>Adiantum pedatum</i> L.	Maidenhair fern
<i>Agrimonia striata</i> Michx.	Agrimony
<i>Agropyron repens</i> (L.) Beauv.	Witch grass Couch grass Quack grass
<i>Agropyron trachycaulum</i> (Link) Malte	Slender wheat-grass
<i>Agrostis alba</i> L.	Redtop
<i>Agrostis borealis</i> Hartm.	Arctic bent-grass
<i>Agrostis canina</i> L.	Velvet bent-grass Brown top
<i>Agrostis perennans</i> (Walt.) Tuckerm.	Upland bent-grass
<i>Agrostis scabra</i> Willd.	Ticklegrass Hair-grass
<i>Agrostis tenuis</i> Sibth.	Bent-grass Brown top Rhode Island bent
<i>Alnus crispa</i> (Ait.) Pursh	Green alder
<i>Alnus rugosa</i> (Du Roi) Spreng.	Speckled alder Tag alder Grey alder Hoary alder
<i>Alnus serrulata</i> (Ait.) Willd.	Hazel alder
<i>Alisma triviale</i> Pursh	Water plantain
<i>Allium schoenoprasum</i> L.	Chives
<i>Alopecurus aequalis</i> Sobol.	Short-awn foxtail
<i>Amaranthus retroflexus</i> L.	Pigweed
<i>Ambrosia artemisiifolia</i> L.	Common ragweed
<i>Amelanchier alnifolia</i> Nutt.	Saskatoonberry
<i>Amelanchier amabilis</i> Wieg.	Snowy serviceberry
<i>Amelanchier arborea</i> (Michx. f.) Fern.	Downy serviceberry Shadbush
<i>Amelanchier bartramiana</i> (Tausch) Roemer	Bartram's serviceberry Mountain juneberry
<i>Amelanchier canadensis</i> (L.) Medic.	Shadblow serviceberry

<i>Amelanchier humilis</i> Wieg.	Low serviceberry
<i>Amelanchier intermedia</i> Spach	Purple serviceberry
<i>Amelanchier laevis</i> Weig.	Allegheny serviceberry
	Shadbush
	Bilberry
<i>Amelanchier sanguinea</i> (Pursh) DC.	Roundleaf serviceberry
<i>Amelanchier spicata</i> (Lam.) K.Koch	Dwarf serviceberry
<i>Amelanchier stolonifera</i> Wieg.	Running serviceberry
<i>Amelanchier wiegandii</i> Nielsen	Shadbush
	Wild pear
<i>Ammophila breviligulata</i> Fern.	American beach-grass
<i>Amphicarpa bracteata</i> (L.) Fern.	Hog peanut
<i>Anaphalis margaritacea</i> (L.) C.B.Clarke	Pearly everlasting
<i>Andromeda glaucophylla</i> Link	Andromeda
	Bog-rosemary
<i>Andropogon scoparius</i> Michx.	Broom beard-grass
<i>Anemone canadensis</i> L.	Canada anemone
<i>Anemone cylindrica</i> Gray	Thimbleweed
<i>Anemone quinquefolia</i> L.	Wood anemone
<i>Anemone riparia</i> Fern.	Thimbleweed
<i>Anemone virginiana</i> L.	Thimbleweed
<i>Angelica atropurpurea</i> L.	Purple angelica
<i>Antennaria canadensis</i> Greene	Canada pussy-toes
	Everlasting
<i>Antennaria neodioica</i> Greene	Everlasting
<i>Anthemis tinctoria</i> L.	Yellow chamomile
<i>Anthoxanthum odoratum</i> L.	Sweet vernal grass
<i>Apios americana</i> Medic.	Ground nut
<i>Apocynum androsaemifolium</i> L.	Spreading dogbane
<i>Apocynum cannabinum</i> L.	
var. <i>hypericifolium</i> Gray	Indian hemp
<i>Aquilegia vulgaris</i> L.	Garden columbine
	Canada columbine
<i>Aralia hispida</i> Vent.	Bristly aralia
	Bristly sarsaparilla
<i>Aralia nudicaulis</i> L.	Wild sarsaparilla
<i>Aralia racemosa</i> L.	American spikenard
<i>Arceuthobium pusillum</i> Peck	Dwarf mistletoe
<i>Arctostaphylos uva-ursi</i> (L.) Spreng.	Bearberry

<i>Arenaria lateriflora</i> L.	Grove sandwort
<i>Arenaria peploides</i> L. var. <i>robusta</i> Fern.	Seabeach sandwort
<i>Arethusa bulbosa</i> L.	<i>Arethusa</i> Swamp pink
<i>Arisaema atrorubens</i> (Ait.) Blume	Jack-in-the-pulpit
<i>Arisaema stewardsonii</i> Britt.	Jack-in-the-pulpit
<i>Aronia melanocarpa</i> (Michx.) Ell.	Black chokeberry
<i>Aronia prunifolia</i> (Marsh.) Rehd.	Chokeberry
<i>Artemisia stelleriana</i> Bess.	Beach-wormwood
<i>Asarum canadense</i> L.	Wild ginger
<i>Aster acuminatus</i> Michx.	Woodland aster Acuminate aster
<i>Aster ciliolatus</i> Lindl.	Lindley's aster
<i>Aster cordifolius</i> L.	Heart-leaved aster Blue wood aster
<i>Aster foliaceus</i> L.	Large blue aster
<i>Aster johannensis</i> Fern.	Lake St. John aster
<i>Aster laevis</i> L.	Leatherleaf aster
<i>Aster lateriflorus</i> (L.) Britt.	Calico aster
<i>Aster linariifolius</i> L.	Savoryleaf aster
<i>Aster macrophyllus</i> L.	Large-leaved aster Big-leaf aster
<i>Aster nemoralis</i> Ait.	Bog aster
<i>Aster novi-belgii</i> L.	New York aster
<i>Aster puniceus</i> L.	Swamp aster
<i>Aster radula</i> Ait.	Rough aster
<i>Aster simplex</i> Willd.	Long-leaf aster
<i>Aster tradescanti</i> L.	Tradescant aster
<i>Aster umbellatus</i> Mill.	Flat-topped aster Tall white aster
<i>Athyrium filix-femina</i> (L.) Roth var. <i>michauxii</i> (Spreng.) Farw.	Lady fern
<i>Athyrium pycnocarpon</i> (Spreng.) Tidestr.	Narrow-leaf spleenwort
<i>Athyrium thelypteroides</i> (Michx.) Desv.	Silvery spleenwort
<i>Atriplex glabriuscula</i> Edmondston	Fat-hen saltbush
<i>Atriplex patula</i> L.	Orach
<i>Aulocomnium palustre</i> (Web. & Mohr) Schwaegr.	Ribbed bog moss
<i>Baeomyces roseus</i> Pers.	Pink-earth lichen

<i>Barbarea vulgaris</i> R.Br.	Yellow rocket
<i>Betula alba</i> L. (= <i>B. pubescens</i> Ehrh.)	White birch
<i>Betula alleghaniensis</i> Britt. (= <i>B. lutea</i> Michx. f.)	Yellow birch
<i>Betula caerulea-grandis</i> Blanch.	Blue-leaf birch
<i>Betula glandulosa</i> Michx.	Bog birch
<i>Betula hallii</i> Howell	Halls birch
<i>Betula lenta</i> L.	Cherry birch Sweet birch Black birch
<i>Betula neoalaskana</i> Sarg.	Alaska birch
<i>Betula nigra</i> L.	River birch
<i>Betula occidentalis</i> Hook.	Water birch Black birch
<i>Betula papyrifera</i> Marsh.	White birch Paper birch Canoe birch
<i>Betula papyrifera</i> Marsh. var. <i>cordifolia</i> (Regel) Fern.	Heart-leaved birch Mountain paper birch
<i>Betula papyrifera</i> Marsh. var. <i>macrostachya</i> Fern.	White birch Paper birch Canoe birch
<i>Betula pendula</i> Roth	Silver birch Weeping birch
<i>Betula populifolia</i> Marsh.	Gray birch Wire birch
<i>Betula pumila</i> L.	Bog birch Swamp birch
<i>Bidens cernua</i> L.	Nodding bur-marigold Stick tight
<i>Bidens frondosa</i> L.	Common beggar-ticks
<i>Botrychium multifidum</i> (Gmel.) Rupr.	Leathery grape fern
<i>Botrychium virginianum</i> (L.) Sw.	Rattlesnake fern
<i>Brachyelytrum erectum</i> (Schreb.) Beauv. var. <i>septentrionale</i> Babel	Short husk
<i>Brassica nigra</i> (L.) Koch	Black mustard
<i>Bromus ciliatus</i> L.	Brome grass
<i>Bromus inermis</i> Leyss.	Smooth brome grass Awnless brome grass

<i>Cakile edentula</i> (Bigel.) Hook.	Sea rocket
<i>Calamagrostis canadensis</i> (Michx.) Nutt.	Blue-joint
<i>Calamagrostis pickeringii</i> Gray	Pickering reedgrass
<i>Calliergonella schreberi</i> (Willd., B. & S.) Grout (= <i>Pleurozium schreberi</i> Mitt.)	Schreber's moss
<i>Callitriche heterophylla</i> Pursh	Larger water-starwort
<i>Callitriche palustris</i> L.	Common water-starwort
<i>Calopogon pulchellus</i> (Salisb.) R.Br.	Calapogon Grass pink
<i>Calypso bulbosa</i> (L.) Oakes	Calypso
<i>Caltha palustris</i> L.	Marsh marigold
<i>Campanula rapunculoides</i> L.	Bell-flower Bluebell
<i>Campanula rotundifolia</i> L.	Harebell Bluebell
<i>Campanula uliginosa</i> Rydb.	Marsh bluebell Marsh bell-flower
<i>Capsella bursa-pastoris</i> (L.) Medic.	Shepherd's purse
<i>Cardamine pensylvanica</i> Muhl.	Bitter cress
<i>Carex arctata</i> Boott	Drooping wood sedge
<i>Carex brunnescens</i> (Pers.) Poir.	Brownish sedge
<i>Carex crawfordii</i> Fern.	Crawford sedge
<i>Carex crinita</i> Lam.	Fringed sedge
<i>Carex deweyana</i> Schwein.	Dewey's sedge
<i>Carex interior</i> Bailey	Inland sedge
<i>Carex lasiocarpa</i> Ehrh.	Woolfruit sedge
<i>Carex leptalea</i> Wahlenb.	Bristle-stalked sedge
<i>Carex lurida</i> Wahlenb.	Lurid sedge
<i>Carex oligosperma</i> Michx.	Few-seed sedge
<i>Carex paupercula</i> Michx.	Bog sedge
<i>Carex plantaginea</i> Lam.	Plantain-leaf sedge
<i>Carex prairea</i> Dew.	Prairie sedge
<i>Carex projecta</i> Mackenz.	Spreading sedge
<i>Carex rostrata</i> Stokes	Beaked sedge
<i>Carex sartwellii</i> Dew.	Sartwell sedge
<i>Carex scoparia</i> Schkuhr	Broom sedge
<i>Carex torta</i> Boott	Twisted sedge
<i>Carex tribuloides</i> Wahlenb.	Bristlebract sedge

<i>Carex trisperma</i> Dew.	Three-seeded sedge
<i>Carex vesicaria</i> L.	Blister sedge
<i>Carpinus caroliniana</i> Walt.	Hornbeam
	Ironwood
<i>Carpinus caroliniana</i> Walt.	
var. <i>virginiana</i> (Marsh.) Fern.	Blue-beech
<i>Catabrosa aquatica</i> (L.) Beauv.	Water hairgrass
<i>Caulophyllum thalictroides</i> (L.) Michx.	Blue cohosh
	Papoose root
	Red root
<i>Ceanothus americanus</i> L.	Climbing bittersweet
<i>Celastrus scandens</i> L.	Hackberry
<i>Celtis occidentalis</i> L.	Knapweed
<i>Centaurea nigra</i> L.	Common mouse-eared chickweed
<i>Cerastium vulgatum</i> L.	Iceland moss
<i>Cetraria islandica</i> (L.) Ach.	Dwarf snapdragon
<i>Chaenorrhinum minus</i> (L.) Lange	Leather-leaf
<i>Chamaedaphne calyculata</i> (L.) Moench	Casandra
	Turtlehead
<i>Chelone glabra</i> L.	Balmomy
	Prince's pine
<i>Chimaphila umbellata</i> (L.) Bart.	Pipsissewa
	Ox-eye daisy
<i>Chrysanthemum leucanthemum</i> L.	Golden saxifrage
<i>Chrysosplenium americanum</i> Schwein.	Watermat
	Bulbous water hemlock
<i>Cicuta bulbifera</i> L.	Wood reed
<i>Cinna latifolia</i> (Trev.) Griseb.	Nodding wood-grass
	Small enchanter's nightshade
<i>Circaea alpina</i> L.	Canadian enchanter's nightshade
<i>Circaea canadensis</i> Hill	
<i>Circaea quadrisulcata</i> (Maxim.) Franch. & Sav.	Large enchanter's nightshade
var. <i>canadensis</i> (L.) Hara	Canada thistle
<i>Cirsium arvense</i> (L.) Scop.	Swamp thistle
<i>Cirsium muticum</i> Michx.	Bull thistle
<i>Cirsium vulgare</i> (Savi) Tenore	Reindeer moss
<i>Cladonia alpestris</i> (L.) Rabenh.	Forked shrublet lichen
<i>Cladonia furcata</i> (Huds.) Schrad.	Reindeer moss
<i>Cladonia rangiferina</i> (L.) Web.	Woodland reindeer moss
<i>Cladonia sylvatica</i> (L.) Hoffm.	

<i>Cladonia uncialis</i> (L.) Hoffm.	Thorn lichen
<i>Claytonia caroliniana</i> Michx.	Spring beauty
<i>Clematis virginiana</i> L.	Virgin's bower
<i>Climacium americanum</i> Brid.	American tree moss
<i>Clintonia borealis</i> (Ait.) Raf.	Yellow clintonia
	Corn-lily
<i>Comandra richardiana</i> Fern.	Bastard toadflax
	Toadflax
<i>Comptonia peregrina</i> (L.) Coult.	Sweet-fern
<i>Conioselinum chinense</i> (L.) BSP.	Hemlock-parsley
<i>Conopholis americana</i> (L.) Wallr.	Cancer-root
<i>Convallaria majalis</i> L.	Lily-of-the-valley
<i>Coptis trifolia</i> (L.) Salisb. (= <i>C. groenlandica</i> (Oeder) Fern.)	Gold-thread
<i>Corallorhiza maculata</i> Raf.	Spotted coral-root
<i>Corallorhiza trifida</i> Chatelain	Early coral-root
<i>Cornus acadiensis</i> Fern.	Bunchberry
<i>Cornus alternifolia</i> L. f.	Alternate-leaved dogwood
	Green osier
<i>Cornus canadensis</i> L.	Bunchberry
<i>Cornus rugosa</i> Lam.	Round-leaved dogwood
<i>Cornus stolonifera</i> Michx.	Red osier
	Dogwood
<i>Corema conradii</i> Torr.	Broom crowberry
<i>Coronilla scirpioides</i> (L.) Koch	Scorpion coronilla
<i>Corydalis sempervirens</i> (L.) Pers.	Pink corydalis
	Pale corydalis
	Rock-harlequin
<i>Corylus cornuta</i> Marsh.	Hazelnut
	Beaked hazelnut
<i>Crataegus chrysocarpa</i> Ashe	American hawthorn
	Goldenfruited hawthorn
<i>Crataegus punctata</i> Jacq.	Dotted hawthorn
<i>Crataegus submollis</i> Sarg.	Quebec hawthorn
<i>Cypripedium acaule</i> Ait.	Common lady's slipper
	Moccasin-flower
	White stemless lady's slipper
<i>Cypripedium calceolus</i> L.	Yellow lady's slipper
<i>Cypripedium reginae</i> Walt.	Showy lady's slipper
<i>Cyperus esculentus</i> L.	Nut grass

<i>Cytisus scoparius</i> (L.) Link	Scots broom
<i>Cystopteris bulbifera</i> (L.) Bernh.	Bulblet fern
	Berry fern
<i>Cystopteris fragilis</i> (L.) Bernh.	Common bladder fern
	Fragile bladder fern
<i>Dactylis glomerata</i> L.	Orchard grass
<i>Dalibarda repens</i> L.	Dalibarda
	Robin-run-away
<i>Danthonia compressa</i> Aust.	Flat stem danthonia
<i>Danthonia spicata</i> (L.) Beauv.	Wire grass
	Poverty grass
	June grass
<i>Daucus carota</i> L.	Wild carrot
	Queen Ann's lace
<i>Dennstaedtia punctilobula</i> (Michx.) Moore	Hay-scented fern
<i>Dentaria diphylla</i> Michx.	Toothwort
	Pepperroot
<i>Deschampsia caespitosa</i> (L.) Beauv.	Tufted hair-grass
<i>Deschampsia flexuosa</i> (L.) Trin.	Hair-grass
<i>Desmodium canadense</i> (L.) DC.	Canada tick clover
	Canada beggars ticks
<i>Dianthus deltoides</i> L.	Maiden pink
<i>Dicentra cucullaria</i> (L.) Bernh.	Dutchman's breeches
<i>Dicranum rugosum</i> (Hoffm.) Brid.	Wavy dicranum
<i>Dicranum scoparium</i> (L.) Hedw.	Broom moss
<i>Diervilla lonicera</i> Mill.	Bush honeysuckle
<i>Digitaria ischaemum</i> (Schreb.) Muhl.	Small crabgrass
<i>Dirca palustris</i> L.	Leatherwood
<i>Distichlis spicata</i> (L.) Greene	Seashore salt-grass
<i>Dracocephalum parviflorum</i> Nutt.	Small-flowered dragonhead
<i>Drosera intermedia</i> Hayne	Narrow-leaved sundew
<i>Drosera rotundifolia</i> L.	Round-leaved sundew
<i>Dryopteris cristata</i> (L.) Gray	Crested wood fern
	Crested fern
<i>Dryopteris filix-mas</i> (L.) Schott	Male fern
<i>Dryopteris goldiana</i> (Hook.) Gray	Goldie's fern
<i>Dryopteris hexagonoptera</i> (Michx.) Christens.	Broadbeech fern
<i>Dryopteris marginalis</i> (L.) Gray	Marginal shield fern
	Leather fern
<i>Dryopteris noveboracensis</i> (L.) Gray	New York fern

<i>Dryopteris spinulosa</i> (O.F.Muell.) Watt	Toothed wood fern
<i>Dryopteris thelypteris</i> (L.) Gray var. <i>pubescens</i> (Lawson) Nakai	Marsh fern
<i>Dulichium arundinaceum</i> (L.) Britt.	Three-way sedge
<i>Echinochloa crusgalli</i> (L.) Beauv.	Barnyard grass
<i>Echinocystis lobata</i> (Michx.) T. & G.	Wild cucumber Prickly cucumber
<i>Eleocharis ovata</i> (Roth) R. & S.	Ovoid spikesedge
<i>Elymus canadensis</i> L.	Canada wildrye
<i>Elymus mollis</i> Trin.	American dune grass
<i>Elymus virginicus</i> L.	Virginia wildrye Terrell grass
<i>Empetrum nigrum</i> L.	Black crowberry
<i>Epifagus virginiana</i> (L.) Bart.	Beech-drops
<i>Epigaea repens</i> L.	Trailing arbutus Mayflower May
<i>Epilobium angustifolium</i> L.	Fireweed
<i>Epilobium glandulosum</i> Lehm.	Rose-bay willow-herb
<i>Epilobium hornemanni</i> Reichenb.	Glandular willow-weed
<i>Epilobium leptophyllum</i> Raf.	Hornemann willow-weed
<i>Epilobium palustre</i> L.	Bog willow-herb
<i>Equisetum arvense</i> L.	Marsh willow-herb
<i>Equisetum fluviatile</i> L.	Field horsetail
<i>Equisetum hyemale</i> L.	Water horsetail
<i>Equisetum pratense</i> Ehrh.	Scouring rush
<i>Equisetum scirpoides</i> Michx.	Meadow horsetail
<i>Equisetum sylvaticum</i> L.	Dwarf scouring rush
<i>Erechtites heiracifolia</i> (L.) Raf.	Woodland horsetail
<i>Erigeron hyssopifolius</i> Michx.	Fire weed
<i>Erigeron philadelphicus</i> L.	Pilewort
<i>Erigeron strigosus</i> Muhl.	Hyssop-leaf fleabane
<i>Eriocaulon septangulare</i> With.	Philadelphia fleabane
<i>Eriophorum angustifolium</i> Honckeny	Daisy fleabane
<i>Eriophorum spissum</i> Fern.	Whitetop
	Pipewort
	Cotton grass
	Hare's tail
	Tufted bog-cotton

<i>Eriophorum tenellum</i> Nutt.	Slender bog-cotton
<i>Eriophorum virginicum</i> L.	Tawny cotton grass Tawny bog-cotton
<i>Erysimum cheiranthoides</i> L.	Wormseed-mustard
<i>Erythronium americanum</i> Ker	Dog's tooth Dogtooth violet Adder's-tongue Trout lily
<i>Eupatorium maculatum</i> L.	Joe-pye-weed
<i>Eupatorium perfoliatum</i> L.	Boneset Thoroughwort
<i>Eupatorium rugosum</i> Houtt.	White snakeroot
<i>Euphrasia americana</i> Wettst.	Common eyebright
<i>Euphrasia canadensis</i> Townsend	Eyebright Euphrasia
<i>Euphrasia rigidula</i> Jord.	Eyebright
<i>Fagus grandifolia</i> Ehrh.	Beech American beech
<i>Festuca capillata</i> Lam.	Hair fescue
<i>Festuca rubra</i> L.	Red fescue
<i>Fragaria vesca</i> L.	Woodland strawberry
<i>Fragaria virginiana</i> Duchesne	Wild strawberry
<i>Fraxinus americana</i> L.	White ash
<i>Fraxinus excelsior</i> L.	European ash
<i>Fraxinus nigra</i> Marsh.	Black ash Swamp ash
<i>Fraxinus pennsylvanica</i> Marsh.	Red ash
<i>Fraxinus pennsylvanica</i> Marsh. var. <i>austini</i> Fern.	Northern red ash
<i>Galeopsis tetrahit</i> L.	Hemp-nettle
<i>Galinsoga ciliata</i> (Raf.) Blake	Quick weed
<i>Galium asprellum</i> Michx.	Rough bedstraw
<i>Galium boreale</i> L.	Northern bedstraw
<i>Galium kamschaticum</i> Steller	Northern bedstraw
<i>Galium labradoricum</i> Wieg.	Bog bedstraw
<i>Galium palustre</i> L.	Common bedstraw Marsh bedstraw

<i>Galium tinctorium</i> L.	Small bedstraw
<i>Galium trifidum</i> L.	Sweet-scented bedstraw
<i>Galium triflorum</i> Michx.	Three flower bedstraw Sweet-scented bedstraw
<i>Gaultheria hispidula</i> (L.) Muhl.	Capillaire Creeping snowberry
<i>Gaultheria procumbens</i> L.	Teaberry Checkerberry Wintergreen
<i>Gaylussacia baccata</i> (Wang.) K.Koch	Black huckleberry
<i>Gaylussacia dumosa</i> (Andr.) T. & G.	Bog huckleberry
<i>Geocaulon lividum</i> (Richards.) Fern.	Northern comandra
<i>Geranium bicknellii</i> Britt.	Wild geranium Bicknell geranium
<i>Geranium robertianum</i> L.	Herb-robert
<i>Geum aleppicum</i> Jacq.	Yellow avens
<i>Geum macrophyllum</i> Willd.	Largeleaf avens
<i>Geum rivale</i> L.	Purple avens
<i>Glaux maritima</i> L.	Sea milk-wort
<i>Glechoma hederacea</i> L.	Ground Ivy Gill
<i>Glyceria borealis</i> (Nash) Batchelder	Northern manna grass Small floating manna grass
<i>Glyceria canadensis</i> (Michx.) Trin.	Rattlesnake grass
<i>Glyceria fernaldii</i> (Hitchc.) St. John	Small manna grass
<i>Glyceria grandis</i> S.Wats.	Reed manna grass
<i>Glyceria melicaria</i> (Michx.) F.T.Hubbard	Melic manna grass
<i>Glyceria obtusa</i> (Muhl.) Trin.	Atlantic manna grass
<i>Glyceria striata</i> (Lam.) Hitchc.	Fowl manna grass Fowl meadow grass
<i>Gnaphalium sylvaticum</i> L.	Cudweed
<i>Gnaphalium uliginosum</i> L.	Low cudweed
<i>Goodyera repens</i> (L.) R.Br.	Creeping rattlesnake plantain
<i>Goodyera tessellata</i> Lodd.	Checkered rattlesnake plantain
<i>Gymnocarpium dryopteris</i> (L.) Newm.	Oak fern
<i>Gyrophora muhlenbergii</i> Ach.	Muhlenberg's rocktripe

<i>Habenaria blephariglottis</i> (Willd.) Hook.	White fringed orchid
<i>Habenaria clavellata</i> (Michx.) Spreng.	Green woodland orchis
<i>Habenaria dilatata</i> (Pursh) Hook.	White bog-orchid Bog candle
<i>Habenaria fimbriata</i> (Ait.) R.Br.	Large purple habenaria
<i>Habenaria hookeri</i> Torr.	Hooker's orchis
<i>Habenaria hyperborea</i> (L.) R.Br.	Green orchis Northern habenaria
<i>Habenaria lacera</i> (Michx.) Lodd.	Ragged fringed orchid
<i>Habenaria macrophylla</i> Goldie	Big-leaf habenaria
<i>Habenaria obtusata</i> (Pursh) Richards.	Blunt leaf orchis Oneleaf habenaria
<i>Habenaria orbiculata</i> (Pursh) Torr.	Round leaved orchis Roundleaf habenaria
<i>Habenaria psycodes</i> (L.) Spreng.	Small purple fringed orchis Small purple habenaria
<i>Halenia deflexa</i> (Sm.) Griseb.	Spurred gentian
<i>Hamamelis virginiana</i> L.	Witch hazel
<i>Hepatica acutiloba</i> DC.	Sharplobe hepatica
<i>Hepatica americana</i> (DC.) Ker	American hepatica Roundlobe hepatica
<i>Heracleum maximum</i> Bartr.	Masterwort Cow parsnip
<i>Hesperis matronalis</i> L.	Rocket Dame's violet
<i>Hieracium aurantiacum</i> L.	Devil's paint-brush Orange hawkweed
<i>Hieracium canadense</i> Michx.	Canada hawkweed
<i>Hieracium florentium</i> All.	King devil
<i>Hieracium floribundum</i> Wimm. & Grab.	Yellow devil King devil
<i>Hieracium pilosella</i> L.	Mouse-ear hawkweed
<i>Hieracium pratense</i> Tausch	Field hawkweed King devil
<i>Hieracium scabrum</i> Michx.	Rough hawkweed
<i>Hierochloe odorata</i> (L.) Beauv.	Sweet-grass
<i>Hippuris vulgaris</i> L.	Mare's tail
<i>Holcus lanatus</i> L.	Velvet grass
<i>Hordeum jubatum</i> L.	Fox-tail barley Squirrel-tail grass

<i>Hudsonia ericoides</i> L.	Hudsonia
<i>Hudsonia tomentosa</i> Nutt.	Woolly hudsonia
<i>Humulus lupulus</i> L.	Hops
<i>Hydrocotyle americana</i> L.	Water pennywort
<i>Hypericum boreale</i> (Britt.) Bickn.	Northern St. John's-wort
<i>Hypericum canadense</i> L.	Canada St. John's-wort
<i>Hypericum ellipticum</i> Hook.	Pale St. John's-wort
<i>Hypericum perforatum</i> L.	Common St. John's-wort
<i>Hypericum virginicum</i> L.	Marsh St. John's-wort
<i>Hypnum crista-castrensis</i> Hedw.	Plume moss
<i>Ilex glabra</i> (L.) Gray	Inkberry
<i>Ilex verticillata</i> (L.) Gray	Black alder Canada holly Winterberry
<i>Impatiens capensis</i> Meerb.	Spotted touch-me-not
<i>Iris versicolor</i> L.	Blue flag Blue iris
<i>Isoetes muricata</i> Dur.	Quillwort
<i>Juglans cinerea</i> L.	Butternut White walnut
<i>Juncus brevicaudatus</i> (Englem.) Fern.	Short-tail rush
<i>Juncus effusus</i> L.	Soft rush
<i>Juncus tenuis</i> Willd.	Path rush
<i>Juniperus communis</i> L.	Common juniper
<i>Juniperus communis</i> L. var. <i>depressa</i> Pursh	Dwarf juniper
<i>Juniperus horizontalis</i> Moench	Creeping juniper
<i>Kalmia angustifolia</i> L.	Lambkill Sheep-laurel
<i>Kalmis polifolia</i> Wang.	Pale laurel Bog laurel
<i>Lactuca biennis</i> (Moench) Fern.	Blue wild lettuce Canada lettuce
<i>Laportea canadensis</i> (L.) Wedd.	Wood-nettle
<i>Larix decidua</i> Mill.	European larch

<i>Larix laricina</i> (Du Roi) K.Koch	Tamarack
	Hackmatack
	Eastern larch
	Alaska larch
	Japanese larch
<i>Larix leptolepis</i> (Sieb. & Zucc.) Gordon	
<i>Lathyrus japonicus</i> Willd.	Beach pea
var. <i>glaber</i> (Ser.) Fern.	
<i>Lathyrus ochroleucus</i> Hook.	Creamy peavine
<i>Lathyrus palustris</i> L.	Wild pea
	Vetchling
	Pinweed
<i>Lechea intermedia</i> Leggett	
<i>Ledum groenlandicum</i> Oeder	Labrador tea
<i>Leersia oryzoides</i> (L.) Sw.	Rice cut-grass
<i>Leersia virginica</i> Willd.	White-grass
<i>Lemna minor</i> L.	Duckweed
<i>Leontodon autumnalis</i> L.	Fall dandelion
	August flower
	Motherwort
<i>Leonurus cardiaca</i> L.	
<i>Ligusticum scoticum</i> L.	Scots lovage
<i>Lilium canadense</i> L.	Canada lily
<i>Limonium nashii</i> Small	Sea lavender
<i>Linaria vulgaris</i> Hill	Butter-and-eggs
	Toad-flax
	False pimpernel
<i>Lindernia dubia</i> (L.) Pennell	
<i>Linnaea borealis</i> L.	Twinflower
<i>Listera convallarioides</i> (Sw.) Nutt.	Broad lipped twayblade
<i>Listera cordata</i> (L.) R.Br.	Heartleaf twayblade
<i>Lobelia cardinalis</i> L.	Cardinal flower
<i>Lobelia dortmanna</i> L.	Water lobelia
<i>Lobelia inflata</i> L.	Indian tobacco
<i>Lobelia kalmii</i> L.	Ontario lobelia
<i>Lolium multiflorum</i> Lam.	Italian rye grass
<i>Lonicera canadensis</i> Bartr.	Canadian honeysuckle
<i>Lonicera hirsuta</i> Eaton	Hairy honeysuckle
<i>Lonicera oblongifolia</i> (Goldie) Hook.	Swamp honeysuckle
<i>Lonicera villosa</i> (Michx.) R. & S.	Mountain fly honeysuckle
	Velvet honeysuckle
<i>Lupinus polyphyllus</i> Lindl.	Garden lupin
<i>Luzula acuminata</i> Raf.	Wood-rush

<i>Luzula multiflora</i> (Retz.) Lejeune	Common wood-rush
<i>Luzula parviflora</i> (Ehrh.) Desv.	Millet wood-rush
<i>Lycopodium annotinum</i> L.	Bristly clubmoss
<i>Lycopodium clavatum</i> L.	Running clubmoss
<i>Lycopodium complanatum</i> L.	Ground cedar
<i>Lycopodium inundatum</i> L.	Bog clubmoss
<i>Lycopodium obscurum</i> L.	Ground pine
	Tree clubmoss
<i>Lycopodium sabinaefolium</i> Willd.	Ground fir
	Heath-cypress
<i>Lycopodium selago</i> L.	Fir clubmoss
<i>Lycopodium tristachyum</i> Pursh	Creeping cedar
<i>Lycopus americanus</i> Muhl.	Water-horehound
	American bugleweed
<i>Lycopus uniflorus</i> Michx.	Northern bugleweed
<i>Lysimachia ciliata</i> L.	Fringed loosestrife
<i>Lysimachia terrestris</i> (L.) BSP.	Terrestrial loosestrife
	Swamp candles
<i>Lysimachia thyrsoflora</i> L.	Water loosestrife
	Tufted loosestrife
<i>Lythrum salicaria</i> L.	Spiked loosestrife
<i>Maianthemum canadense</i> Desf.	Wild lily-of-the valley
	Canada maianthemum
<i>Malaxis unifolia</i> Michx.	Green adder's mouth
<i>Malva moschata</i> L.	Musk mallow
<i>Marchantia polymorpha</i> L.	Marchantia
<i>Matricaria matricarioides</i> (Less.) Porter	Pineapple weed
<i>Medeola virginiana</i> L.	Indian cucumber-root
<i>Melampyrum lineare</i> Desr.	Cow-wheat
<i>Mentha arvensis</i> L.	Field-mint
	Wild mint
<i>Menyanthes trifoliata</i> L.	Bogbean
<i>Mertensia paniculata</i> (Ait.) G. Don	Tall lungwort
<i>Milium effusum</i> L.	Millet-grass
<i>Mimulus moschatus</i> Dougl.	Muskflower
<i>Mimulus ringens</i> L.	Monkey-flower
<i>Mitchella repens</i> L.	Partridge berry

<i>Mitella diphylla</i> L.	Twoleaf miterwort
<i>Mitella nuda</i> L.	Naked miterwort
<i>Mnium affine</i> Bland.	Toothed mnium
<i>Mnium punctatum</i> (L.) Hedw.	Dotted mnium
<i>Moneses uniflora</i> (L.) Gray	One-flowered shinleaf
	One-flower pyrola
<i>Monotropa hypopithys</i> L.	Pinesap
<i>Monotropa uniflora</i> L.	Indian pipe
<i>Muhlenbergia mexicana</i> (L.) Trin.	Muhly grass
<i>Muhlenbergia richardsonis</i> (Trin.) Rydb.	Mat muhly
<i>Muglenbergia sylvatica</i> Torr.	Forest muhly
<i>Myosotis laxa</i> Lehm.	Small forget-me-not
<i>Myrica gale</i> L.	Sweet gale
<i>Myrica pensylvanica</i> Loisel.	Bayberry
<i>Myriophyllum tenellum</i> Bigel.	Slender parrot-feather
<i>Najas flexilis</i> (Willd.) Rostk. & Schmidt	Naiad
<i>Nemopanthus mucronata</i> (L.) Trel.	False holly
	Mountain holly
<i>Nuphar variegatum</i> Engelm.	Cow-lily
	Bullhead lily
	Yellow pond lily
	Fragrant pond lily
<i>Nymphaea odorata</i> Ait.	Water lily
<i>Nymphoides cordata</i> (Ell.) Fern.	Floating heart
<i>Odontites serotina</i> (Lam.) Dum.	Red bartsia
<i>Oenothera parviflora</i> L.	Small-flowered evening primrose
<i>Oenothera perennis</i> L.	Sundrops
<i>Onoclea sensibilis</i> L.	Sensitive fern
<i>Orchis rotundifolia</i> Banks	Roundleaf orchid
<i>Orchis spectabilis</i> L.	Showy orchid
<i>Orobanche uniflora</i> L.	Broom-rape
	One-flowered cancer-root
<i>Oryzopsis asperifolia</i> Michx.	Rich-grass
	Rough mountain-rice
<i>Osmorhiza chilensis</i> H. & A.	Sweet cicely
<i>Osmorhiza claytoni</i> (Michx.) C.B. Clarke	Harry sweet cicely
	Sweet jarvil

<i>Osmunda cinnamomea</i> L.	Cinnamon fern
<i>Osmunda claytoniana</i> L.	Interrupted fern
<i>Osmunda regalis</i> L.	Royal fern
<i>Ostrya virginiana</i> (Mill.) K.Koch	Ironwood
	Hop-hornbeam
<i>Oxalis corniculata</i> L.	Creeping wood-sorrel
<i>Oxalis europaea</i> Jord.	European yellow oxalis
<i>Oxalis montana</i> Raf.	Wood sorrel
<i>Panax trifolius</i> L.	Dwarf ginseng
<i>Panicum boreale</i> Nash	Northern panic-grass
<i>Panicum capillare</i> L.	Old witch grass
<i>Panicum lanuginosum</i> Ell.	Woolly panic-grass
<i>Parmelia conspersa</i> (Ehrh.) Ach.	Sprinkled parmelia
<i>Parnassia glauca</i> Raf.	Grass-of-Parnassus
<i>Pastinaca sativa</i> L.	Wild parsnip
<i>Peltigera aphthosa</i> (L.) Willd.	Spotted peltigera
<i>Petasites palmatus</i> (Ait.) Gray	Sweet coltsfoot
	Sweet petesites
<i>Phalaris arundinacea</i> L.	Reed canary grass
<i>Phleum pratense</i> L.	Timothy
<i>Phryma leptostachya</i> L.	Lopseed
<i>Physocarpus opulifolius</i> (L.) Maxim.	Ninebark
<i>Picea abies</i> (L.) Karst.	Norway spruce
<i>Picea engelmanni</i> (Parry) Engelm.	Engelman spruce
	Mountain spruce
<i>Picea glauca</i> (Moench) Voss	White spruce
	Cat spruce
<i>Picea jezoensis</i> (Sieb. & Zucc.) Carr.	Yezo spruce
	Hondo spruce
<i>Picea mariana</i> (Mill.) BSP.	Black spruce
	Bog spruce
	Swamp spruce
<i>Picea omorika</i> (Pancic) Purkyne	Serbian spruce
<i>Picea orientalis</i> (L.) Link	Oriental spruce
<i>Picea rubens</i> Sarg.	Red spruce
	Yellow spruce
<i>Picea sitchensis</i> (Bong.) Carr.	Sitka spruce
	Tideland spruce

<i>Pilea pumila</i> (L.) Gray	Clearweed
<i>Pimpinella saxifraga</i> L.	Burnet saxifrage
<i>Pinus contorta</i> Dougl. ex Loud.	Lodgepole pine
	Shore pine
<i>Pinus divaricata</i> (Ait.) Dumont. (= <i>P. banksiana</i> Lamb.)	Jack pine
	Banksian pine
<i>Pinus echinata</i> Mill.	Short-leaf pine
<i>Pinus resinosa</i> Ait.	Red pine
	Norway pine
<i>Pinus rigida</i> Mill.	Pitch pine
<i>Pinus strobus</i> L.	White pine
	Weymouth pine
	King's pine
<i>Pinus sylvestris</i> L.	Scots pine
<i>Plantago lanceolata</i> L.	Ribgrass
	English plantain
<i>Plantago major</i> L.	Broad-leaved plantain
	Common plantain
<i>Plantago juncooides</i> Lam.	Seashore plantain
<i>Pleurozium schreberi</i> Mitt. (= <i>Caliergonella schreberi</i>)	Schreber's moss
<i>Poa compressa</i> L.	Canada bluegrass
<i>Poa nemoralis</i> L.	Wood bluegrass
<i>Poa palustris</i> L.	Fowl-meadow grass
<i>Poa pratensis</i> L.	Kentucky bluegrass
<i>Pogonia ophioglossoides</i> (L.) Ker	Bog pogonia
	Beard flower
<i>Pohlia nutans</i> (Schreb.) Lindb.	Nodding pohlia
<i>Polygala paucifolia</i> Willd.	Fringed polygala
<i>Polygala senega</i> L.	Seneca-snakeroot
<i>Polygonatum pubescens</i> (Willd.) Pursh	Downy Solomon's seal
<i>Polygonum arifolium</i> L.	Halberd-leaved tearthumb
<i>Polygonum cilinode</i> Michx.	Fringed bindweed
<i>Polygonum convolvulus</i> L.	Wild buckwheat
<i>Polygonum hydropiper</i> L.	Water-pepper
<i>Polygonum hydropiperoides</i> Michx.	Mild water-pepper
	Common smartweed
<i>Polygonum lapathifolium</i> L.	Curltop lady's-thumb
<i>Polygonum natans</i> Eaton	Water smartweed

<i>Polygonum pensylvanicum</i> L.	Pinkweed
<i>Polygonum ramosissimum</i> Michx.	Bushy knotweed
<i>Polygonum sagittatum</i> L.	Arrow-leaved tearthumb
	Arrow-vine
<i>Polypodium virginianum</i> L.	Rock polypody
	Polypody fern
<i>Polystichum acrostichoides</i> (Michx.) Schott	Christmas fern
<i>Polystichum braunii</i> (Spennar) Fee	Braun's holly fern
<i>Polytrichum commune</i> Hedw.	Haircap moss
<i>Pontederia cordata</i> L.	Pickerel weed
<i>Populus alba</i> L.	European white poplar
	Silver poplar
<i>Populus balsamifera</i> L.	Balsam poplar
	Tacamahac
<i>Populus grandidentata</i> Michx.	Large-tooth aspen
<i>Populus tremuloides</i> Michx.	Trembling aspen
<i>Portulaca oleracea</i> L.	Common purslane
<i>Potentilla anserina</i> L.	Silverweed
<i>Potentilla argentea</i> L.	Silvery cinquefoil
<i>Potentilla arguta</i> Pursh	Tall cinquefoil
<i>Potentilla canadensis</i> L.	Canada cinquefoil
<i>Potentilla fruticosa</i> L.	Shrubby cinquefoil
<i>Potentilla norvegica</i> L.	Rough cinquefoil
<i>Potentilla palustris</i> (L.) Scop.	Marsh cinquefoil
<i>Potentilla recta</i> L.	Sulphur cinquefoil
<i>Potentilla simplex</i> Michx.	Five-finger cinquefoil
	Old field cinquefoil
<i>Potentilla tridentata</i> Ait.	Three-toothed cinquefoil
<i>Prenanthes altissima</i> L.	Tall rattlesnake root
<i>Prenanthes trifoliolata</i> (Cass.) Fern.	Lion's paw
	Gall-of-the-earth
<i>Prunella vulgaris</i> L.	Self-heal
	Heal-all
<i>Prunus depressa</i> Pursh	Sand cherry
<i>Prunus nigra</i> Ait.	Canada plum
<i>Prunus pensylvanica</i> L. f.	Red cherry
	Fire cherry
	Pin cherry
	Bird cherry
<i>Prunus serotina</i> Ehrh.	Wild black cherry

<i>Prunus virginiana</i> L.	Choke cherry
<i>Pseudotsuga menziesii</i> (Mirb.) Franco	Douglas-fir
<i>Pteretis pensylvanica</i> (Willd.) Fern.	Ostrichfern Fiddlehead fern
<i>Pteridium aquilinum</i> (L.) Kuhn	Bracken Rusty wood fern
<i>Puccinellia maritima</i> (Huds.) Parl.	Seashore alkali-grass
<i>Pyrola asarifolia</i> Michx.	Pink pyrola Pink wintergreen
<i>Pyrola elliptica</i> Nutt.	Shinleaf pyrola
<i>Pyrola minor</i> L.	Small wintergreen
<i>Pyrola rotundifolia</i> L.	Round-leaved pyrola
<i>Pyrola secunda</i> L.	One-sided wintergreen One-sided pyrola
<i>Pyrola virens</i> Schweigger	Green flowered wintergreen Green pyrola
<i>Pyrus americana</i> (Marsh.) DC.	American mountain-ash
<i>Pyrus aucuparia</i> (L.) Gaertn.	European mountain-ash Rowan
<i>Pyrus decora</i> (Sarg.) Hyland	Showy mountain-ash
<i>Quercus borealis</i> Michx. f. (= <i>Q. rubra</i> L.)	Red oak Northern red oak
<i>Quercus macrocarpa</i> Michx.	Bur oak
<i>Quercus robur</i> L.	English oak
<i>Ranunculus abortivus</i> L.	Wood buttercup Kidneyleaf buttercup
<i>Ranunculus acris</i> L.	Tall buttercup Common buttercup
<i>Ranunculus cymbalaria</i> Pursh	Seashore buttercup
<i>Ranunculus pensylvanicus</i> L. f.	Bristly crowfoot
<i>Ranunculus recurvatus</i> Poir.	Hooked buttercup
<i>Ranunculus repens</i> L.	Creeping buttercup
<i>Ranunculus reptans</i> L.	Small spearwort Creeping spearwort
<i>Ranunculus septentrionalis</i> Poir.	Swamp buttercup
<i>Ranunculus trichophyllus</i> Chaix	White water crowfoot
<i>Raphanus raphanistrum</i> L.	Wild radish Charlock

Rhamnus alnifolia L'Her.

Alder-leaved buckthorn
Alder-leaved buckthorn

Rhamnus frangula L.

Alder buckthorn
Alder buckthorn

Rhododendron canadense (L.) Torr.

Rhodora
Rhodora

Rhododendron maximum L.

Great laurel
Great laurel

Rhinanthus crista-galli L.

Yellow rattle
Yellow rattle

Rhus aromatica Ait.

Fragrant sumac
Fragrant sumac
Lemon sumac
Polecat bush
Polecat bush

Rhus glabra L.

Smooth sumac
Smooth sumac

Rhus radicans L.

Poison ivy
Poison ivy

Rhus typhina L.

Staghorn sumac
Staghorn sumac

Rhytidiadelphus triquetrus (L.; Hedw.) Warnst.

Shaggy moss
Shaggy moss

Rhynchospora alba (L.) Vahl

White beak-rush
White beak-rush

Ribes americanum Mill.

Wild black currant
Wild black currant
American currant
American currant

Ribes cynosbati L.

Prickly gooseberry
Prickly gooseberry

Ribes glandulosum Grauer

Skunk currant
Skunk currant

Ribes hirtellum Michx.

Bristly gooseberry
Bristly gooseberry

Ribes lacustre (Pers.) Poir.

Bristly black currant
Bristly black currant

Ribes sativum Syme

Garden red currant
Garden red currant

Ribes triste Pall.

Wild red currant
Wild red currant
Bitter currant
Bitter currant

Rorippa islandica (Oeder) Borbas

Marsh cress
Marsh cress
Yellow cress
Yellow cress

Rosa acicularis Lindl.

Prairie rose
Prairie rose
Prickly rose
Prickly rose

Rosa blanda Ait.

Meadow rose
Meadow rose
Prickleless rose
Prickleless rose

Rosa cinnamomea L.

Cinnamon rose
Cinnamon rose

Rosa micrantha Sm.

Smallflower rose
Smallflower rose

Rosa nitida Willd.

Shining rose
Shining rose

Rosa palustris Marsh.

Swamp rose
Swamp rose

Rosa rugosa Thunb.

Rough rose
Rough rose

Rosa virginiana Mill.

Virginia rose
Virginia rose

Rubus acaulis Michx.

Stemless raspberry
Stemless raspberry

Rubus allegheniensis Porter

Sow-teat blackberry
Sow-teat blackberry
Allegheny blackberry
Allegheny blackberry

Rubus canadensis L.

Canada blackberry
Canada blackberry

Rubus chamaemorus L.

Bake-apple
Bake-apple
Cloudberry
Cloudberry

<i>Rubus gladiacaulis</i> Blanch.	Gland-stem blackberry
<i>Rubus hispidus</i> L.	Trailing blackberry
<i>Rubus occidentalis</i> L.	Black raspberry
<i>Rubus odoratus</i> L.	Flowering raspberry
<i>Rubus parviflorus</i> Nutt.	Thimbleberry
<i>Rubus pubescens</i> Raf.	Dewberry Dwarf raspberry
<i>Rubus setosus</i> Bigel.	Northern bristleberry
<i>Rubus strigosus</i> Michx.	Wild red raspberry
<i>Rubus vermontanus</i> Blanch.	Vermont blackberry
<i>Rumex acetosella</i> L.	Sheep sorrel
<i>Rumex orbiculatus</i> Gray	Water dock
<i>Ruppia maritima</i> L.	Ditch-grass
<i>Sagittaria latifolia</i> Willd.	Common arrowhead Duck potato
<i>Salicornia europaea</i> L.	Glasswort Samphire
<i>Salix alba</i> L.	White willow
<i>Salix amygdaloides</i> Anderss.	Peachleaf willow
<i>Salix babylonica</i> L.	Weeping willow
<i>Salix bebbiana</i> Sarg.	Beaked willow Bebb willow
<i>Salix candida</i> Flugge	Hoary willow
<i>Salix cordata</i> Michx.	Heart-leaved willow
<i>Salix discolor</i> Muhl.	Large pussy willow
<i>Salix glaucophylloides</i> Fern.	Dune willow
<i>Salix gracilis</i> Anderss.	Stalked willow
<i>Salix humilis</i> Marsh.	Small pussy willow
<i>Salix interior</i> Rowlee	Sandbar willow
<i>Salix lucida</i> Muhl.	Shining willow
<i>Salix pyrifolia</i> Anderss.	Bog willow Balsam willow
<i>Salix rigida</i> Muhl.	Heart-leaved willow
<i>Salix sericea</i> Marsh.	Silky willow
<i>Salix viminalis</i> L.	Common osier
<i>Salsola kali</i> L.	Common saltwort
<i>Sambucus canadensis</i> L.	Common elder Canada elderberry

<i>Sambucus pubens</i> Michx.	Red-berried elder Red elderberry
<i>Sanicula marilandica</i> L.	Black snakeroot
<i>Sanicula trifoliata</i> Bickn.	Trefoil sanicle
<i>Sanguinaria canadensis</i> L.	Bloodroot
<i>Sanguisorba canadensis</i> L.	Canadian burnet
<i>Sarracenia purpurea</i> L.	Pitcher plant
<i>Satureja vulgaris</i> (L.) Fritsch	Basil Calamint
<i>Scheuchzeria palustris</i> L.	Scheuchzeria
<i>Schizachne purpurascens</i> (Torr.) Swallen	False melic
<i>Schizaea pusilla</i> Pursh	Curly grass
<i>Scirpus acutus</i> Muhl.	Hard-stem bullrush
<i>Scirpus atrovirens</i> Willd.	Green bullrush
<i>Scirpus hudsonianus</i> (Michx.) Fern.	Bullrush
<i>Scutellaria epilobiifolia</i> A.Hamilton	Common skullcap
<i>Scutellaria lateriflora</i> L.	Mad-dog skullcap
<i>Selaginella rupestris</i> (L.) Spring	Spikemoss
<i>Senecio aureus</i> L.	Golden ragwort Golden groundsel Squaw-weed
<i>Senecio jacobaea</i> L.	Ragwort Stinking-willie
<i>Senecio pauperculus</i> Michx.	Balsam groundsel
<i>Senecio sylvaticus</i> L.	Woodland groundsel
<i>Senecio viscosus</i> L.	Clammy groundsel
<i>Senecio vulgaris</i> L.	Common groundsel
<i>Setaria glauca</i> (L.) Beauv.	Yellow fox-tail
<i>Shepherdia canadensis</i> (L.) Nutt.	Buffalo berry
<i>Silene cucubalus</i> Wibel	Bladder campion
<i>Sisymbrium altissimum</i> L.	Tumble mustard
<i>Sisyrinchium angustifolium</i> Mill.	Common blue-eyed grass
<i>Sisyrinchium atlanticum</i> Bickn.	Atlantic blue-eyed grass
<i>Sisyrinchium montanum</i> Greene	Blue-eyed grass
<i>Sium suave</i> Walt.	Water parsnip
<i>Smilacina racemosa</i> (L.) Desf.	False Solomon's seal Zigzag smilacina
<i>Smilacina stellata</i> (L.) Desf.	Starry false Solomon's seal Starry smilacina

<i>Smilacina trifolia</i> (L.) Desf.	Three-leaved false Solomon's seal Three-leaf smilacina
<i>Smilax herbacea</i> L.	Carrion flower
<i>Smilax rotundifolia</i> L.	Green brier Cat brier
<i>Solanum dulcamara</i> L.	Bittersweet Nightshade
<i>Solidago altissima</i> L.	Tall goldenrod
<i>Solidago bicolor</i> L.	White goldenrod
<i>Solidago caesia</i> L.	Blue-stem goldenrod Wreath goldenrod
<i>Solidago canadensis</i> L.	Canada goldenrod
<i>Solidago flexicaulis</i> L.	Zig-zag goldenrod Wood-goldenrod
<i>Solidago gigantea</i> Ait.	Giant goldenrod
<i>Solidago graminifolia</i> (L.) Salisb.	Narrow-leaved goldenrod Grassleaf goldenrod
<i>Solidago hispida</i> Muhl.	Hairy goldenrod
<i>Solidago humilis</i> Banks	Bog goldenrod
<i>Solidago juncea</i> Ait.	Early goldenrod
<i>Solidago macrophylla</i> Pursh	Large-leaved goldenrod
<i>Solidago nemoralis</i> Ait.	Old-field goldenrod Gray goldenrod
<i>Solidago puberula</i> Nutt.	Rough goldenrod
<i>Solidago rugosa</i> Ait.	Rough goldenrod Wrinkled goldenrod
<i>Solidago sempervirens</i> L.	Seaside goldenrod
<i>Solidago squarrosa</i> Muhl.	Bracted goldenrod
<i>Sonchus arvensis</i> L.	Perennial sow-thistle
<i>Sparganium angustifolium</i> Michx.	Narrow-leaf bur-reed
<i>Sparganium fluctuans</i> (Morong) Robins.	Water bur-reed
<i>Sparganium minimum</i> (Hartm.) Fries	Least bur-reed
<i>Spartina alterniflora</i> Loisel.	Salt-water cord-grass
<i>Spartina patens</i> (Ait.) Muhl.	Salt-meadow grass High-water grass
<i>Spartina pectinata</i> Link	Fresh-water cord-grass Broad-leaf
<i>Spergula arvensis</i> L.	Pineweed Thousand joint Corn spurrey

<i>Spergularia marina</i> (L.) Griseb.	Salt-marsh sand-spurrey
<i>Spergularia rubra</i> (L.) J. & C.Presl.	Red sand-spurrey
<i>Sphagnum capillaceum</i> (Weiss.) Schrank	Acuteleaf sphagnum
<i>Sphagnum palustre</i> L.	Spoonleaf sphagnum
<i>Sphagnum squarrosum</i> Crome	Squarrose sphagnum
<i>Spiraea alba</i> Du Roi	White spiraea
<i>Spiraea latifolia</i> (Ait.) Borkh.	Meadowsweet
	Hardhack
	Broadleaf spiraea
<i>Spiraea tomentosa</i> L.	Steeple-bush spiraea
	Hardhack
<i>Spiranthes cernua</i> (L.) Richard	Nodding ladies'-tresses
	Screw-auger
<i>Spiranthes lacera</i> Raf.	Slender ladies'-tresses
<i>Spiranthes romanzoffiana</i> Cham.	Hooded ladies'-tresses
<i>Sporobolus asper</i> (Michx.) Kunth	Tall drop-seed
<i>Stachys palustris</i> L.	Woundwort
	Hedge-nettle
<i>Stellaria calycantha</i> (Ledeb.) Bong.	Northern starwort
<i>Stellaria graminea</i> L.	Stitchwort
<i>Stellaria media</i> (L.) Cyrillo	Common chickweed
<i>Stereocaulon tomentosum</i> E.Fries	Downy Easter lichen
<i>Streptopus amplexifolius</i> (L.) DC. var. <i>americanus</i> Schultes	Green twisted-stalk
	Liverberry
<i>Streptopus roseus</i> Michx.	Rose twisted-stalk
<i>Suaeda maritima</i> (L.) Dumort.	Sea-blite
	Sea seep-weed
<i>Symplocarpus foetidus</i> (L.) Nutt.	Skunk cabbage
<i>Tamarix odessana</i> Stev. ex Bunge	Odessa tamarisk
<i>Tamarix gallica</i> L.	French tamarisk
<i>Tanacetum huronense</i> Nutt.	Huron tansy
<i>Taxus canadensis</i> Marsh.	Ground hemlock
	Canada yew
<i>Thalictrum confine</i> Fern.	Critical meadowrue
<i>Thalictrum polygamum</i> Muhl.	Tall meadowrue
<i>Thelypteris phegopteris</i> (L.) Slossens	Beech fern
<i>Thlaspi arvense</i> L.	Field penny cress
	Stinkweed

<i>Thuidium delicatulum</i> (L., Hedw.) Mitt.	Fern moss
<i>Thuja occidentalis</i> L.	Arbor-vitae Eastern white cedar
<i>Tiarella cordifolia</i> L.	Foam miterwort Heartleaf foamflower
<i>Tilia americana</i> L.	Basswood Lime Linden Whitewood
<i>Toffieldia glutinosa</i> (Michx.) Pers.	False asphodel
<i>Tragopogon pratensis</i> L.	Goat's-beard
<i>Trientalis borealis</i> Raf.	Star-flower
<i>Trifolium agrarium</i> L.	Yellow hop-clover
<i>Trifolium arvense</i> L.	Rabbit-foot clover
<i>Trifolium repens</i> L.	Creeping white clover
<i>Triglochin maritima</i> L.	Shore podgrass
<i>Trillium cernuum</i> L.	Nodding trillium
<i>Trillium erectum</i> L.	Purple trillium Wake robin Stinking Benjamin
<i>Trillium undulatum</i> Willd.	Painted trillium
<i>Triosteum aurantiacum</i> Bickn.	Feverwort Horse-gentian
<i>Trisetum melicoides</i> (Michx.) Vasey	Melic trisetum
<i>Trisetum spicatum</i> (L.) Richter	Spike trisetum
<i>Tsuga canadensis</i> (L.) Carr.	Eastern hemlock
<i>Tussilago farfara</i> L.	Coltsfoot
<i>Typha angustifolia</i> L.	Narrow-leaved cat-tail
<i>Typha latifolia</i> L.	Broad-leaved cat-tail Common cat-tail
<i>Ulmus americana</i> L.	White elm American elm
<i>Urtica gracilis</i> Ait.	Stinging nettle
<i>Urtica procera</i> Muhl.	Tall nettle Stinging nettle
<i>Usnea barbata</i> (L.) Wigg.	Old man's beard
<i>Usnea florida</i> (L.) Web.	Flowering lichen
<i>Utricularia cornuta</i> Michx.	Horned bladderwort
<i>Utricularia vulgaris</i> L.	Common bladderwort

<i>Uvularia sessilifolia</i> L.	Wild oats Bell wort Little merrybells
<i>Vaccinium angustifolium</i> Ait.	Lowbush blueberry
<i>Vaccinium corymbosum</i> L.	Highbush blueberry
<i>Vaccinium macrocarpon</i> Ait.	Large bog cranberry
<i>Vaccinium myrtilloides</i> Michx.	Canada blueberry Sourtop blueberry
<i>Vaccinium ovalifolium</i> Sm.	Blue bilberry
<i>Vaccinium oxycoccos</i> L.	Small cranberry
<i>Vaccinium vitis-idaea</i> L.	Foxberry Cowberry
<i>Valeriana uliginosa</i> (T. & G.) Rydb.	Bog valerian
<i>Veratrum viride</i> Ait.	Green hellebore False hellebore
<i>Verbascum thapsus</i> L.	Common mullein
<i>Verbena hastata</i> L.	Blue vervain Blue verbena
<i>Verbena urticifolia</i> L.	White verbena
<i>Veronica americana</i> (Raf.) Schwein.	American brookline
<i>Veronica chamaedrys</i> L.	Bird's-eye
<i>Veronica longifolia</i> L.	Garden speedwell
<i>Veronica officinalis</i> L.	Common speedwell
<i>Veronica peregrina</i> L.	Neckweed
<i>Veronica persica</i> Poir.	Bird's-eye
<i>Veronica scutellata</i> L.	Marsh speedwell
<i>Veronica serpyllifolia</i> L.	Thyme-leaved speedwell
<i>Viburnum acerifolium</i> L.	Mapleleaf viburnum
<i>Viburnum alnifolium</i> Marsh.	Hobblebush
<i>Viburnum cassinoides</i> L.	Whitherod viburnum Wild raisin
<i>Viburnum dentatum</i> L.	Arrow-wood
<i>Viburnum edule</i> (Michx.) Raf.	Cranberry bush Squashberry
<i>Viburnum lantana</i> L.	Wayfaring tree
<i>Viburnum lentago</i> L.	Mannyberry Sweet viburnum Sheepberry

<i>Viburnum rafinesquianum</i> Schultes	Downy viburnum.
<i>Viburnum trilobum</i> Marsh.	Highbush cranberry
<i>Vicia americana</i> Muhl.	American vetch
<i>Vicia cracca</i> L.	Tufted vetch
	Canada pea
<i>Viola adunca</i> Sm.	Hook violet
<i>Viola affinis</i> Le Conte	Le Conte violet
<i>Viola blanda</i> Willd.	Sweet white violet
<i>Viola canadensis</i> L.	Canada violet
<i>Viola conspersa</i> Reichenb.	American dog violet
<i>Viola cucullata</i> Ait.	Blue violet
<i>Viola fimbriatula</i> Sm.	Fringed violet
<i>Viola incognita</i> Brainerd	Largeleaf white violet
<i>Viola lanceolata</i> L.	Lance-leaved violet
<i>Viola nephrophylla</i> Greene	Wanderer violet
<i>Viola pallens</i> (Banks) Brainerd	Northern white violet
	Small white violet
<i>Viola palustris</i> L.	Marsh violet
<i>Viola pennsylvanica</i> Michx.	Smooth yellow violet
<i>Viola pubescens</i> Ait.	Downy yellow violet
<i>Viola renifolia</i> Gray	Kidney-leaved violet
<i>Viola rotundifolia</i> Michx.	Round-leaf violet
<i>Viola sagittata</i> Ait.	Arrow-leaf violet
<i>Viola selkirkii</i> Pursh	Wilderness violet
<i>Viola septemloba</i> Le Conte	Sevenlobe violet
<i>Viola septentrionalis</i> Greene	Ontario violet
<i>Viola sororia</i> Willd.	Sister violet
<i>Viola striata</i> Ait.	Striped violet
<i>Vitis riparia</i> Michx.	Wild grape
<i>Woodsia ilvensis</i> (L.) R.Br.	Rusty woodsia
	Rusty fern
<i>Woodwardia virginica</i> (L.) Sm.	Virginia chain fern
<i>Xanthium strumarium</i> L.	Cocklebur
<i>Xanthoxylum americanum</i> Mill.	Common prickly-ash
<i>Xyris montana</i> Ries	Yellow-eyed grass
<i>Zizania aquatica</i> L.	Wild rice