

INSECTS AND MITES ASSOCIATED

WITH ONTARIO FORESTS:

CLASSIFICATION, COMMON NAMES, MAIN HOSTS AND IMPORTANCE

O. H. LINDQUIST and P. D. SYME

GREAT LAKES FOREST RESEARCH CENTRE

SAULT STE. MARIE, ONTARIO

INFORMATION REPORT O-X-333

CANADIAN FORESTRY SERVICE

DEPARTMENT OF THE ENVIRONMENT

1981

*Copies of this report may be obtained  
from:*

*Information Office  
Great Lakes Forest Research Centre  
Canadian Forestry Service  
Department of the Environment  
Box 490  
Sault Ste. Marie, Ontario  
P6A 5M7*

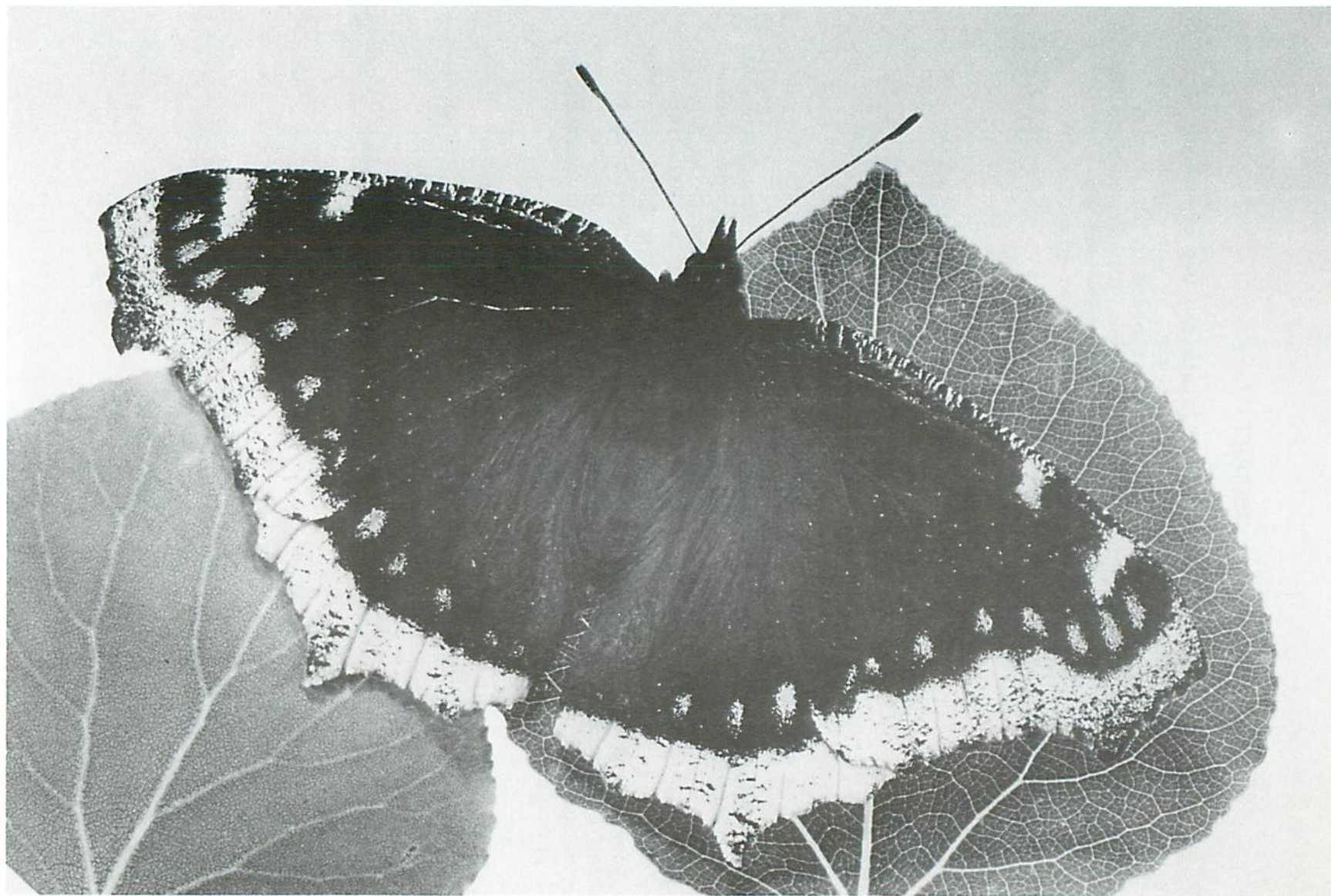
© Minister of Supply and Services Canada 1981  
Cat. No. Fo46-14/333E  
ISBN: 0-662-11778-6

## ABSTRACT

This report was prepared to facilitate the use of scientific and common names of insects and mites dealt with by the forest community of Ontario and includes most of the species recorded by the Forest Insect and Disease Survey over the past 35 years. The arrangement is alphabetical by genus and species. Information provided for each entry includes order, family name, common name, host plant or insect type and a current importance rating.

## RÉSUMÉ

Préparé en vue de faciliter l'emploi des noms scientifiques et vernaculaires des insectes et acariens auxquels les chercheurs forestiers de l'Ontario ont affaire, le présent rapport comporte la plupart des espèces homologuées par le Relevé des insectes et des maladies des arbres forestiers au cours des 35 dernières années. La disposition adoptée est l'ordre alphabétique par genre et espèce. Pour chaque entrée l'information fournie comprend l'ordre, le nom de famille, le nom vernaculaire, la plante-hôte ou le type d'insecte et un paramètre d'importance notoire.



Frontispiece. *Nymphalis antiopa* L. (mourningcloak butterfly).

TABLE OF CONTENTS

	<i>Page</i>
INTRODUCTION . . . . .	v
ALPHABETICAL LISTING BY GENUS AND SPECIES . . . . .	1
SELECTED BIBLIOGRAPHY . . . . .	115

## INTRODUCTION

This report, originally prepared by W.J. Miller and O.H. Lindquist in 1971 and first revised in 1975, is an alphabetical listing by genus and species of most insects and mites received by the Forest Insect and Disease Survey in Ontario over the past 35 years. Also included are a few serious insect pests from other parts of Canada, not currently found in Ontario. The order and family name are given for each species. Common names approved by the Entomological Society of Canada and the Entomological Society of America are underlined. Other common names were drawn from the entomological literature or devised by the authors. The main host plant or plants, if known, are shown for each species of phytophagous forest insect. The designation "general feeder" pertains to a combination of coniferous and deciduous hosts. Other nonphytophagous or subterranean forest insects as well as agricultural and household pests are, for the most part, classified only by insect type such as parasite or predator. Species for which the host plant is shown as "unknown" are mainly from light-trap records. Each entry includes a current importance rating. These ratings are defined as follows:

- A of major importance, capable of killing or severely damaging trees or shrubs;
- B of moderate importance, capable of sporadic or localized injury to trees or shrubs;
- C of minor importance, not known to present a threat to living trees or shrubs;
- D beneficial, killing other insect pests;
- E of major importance in other parts of North America but not currently known to occur in Ontario;
- F insects of forest products or insects associated with the forest environment but not attacking forest trees or shrubs;
- G miscellaneous insects of no consequence in forestry.

This compilation should be useful to any individual who is periodically confronted with unfamiliar scientific names of forest insects and mites in Ontario. It should also serve as a general reference for stenographic and library staffs, various other support groups of federal and provincial governments, and academic institutions dealing in forestry-oriented disciplines in Ontario. It is *not* intended as a nomenclatural authority for reporting of research.

## ALPHABETICAL LISTING BY GENUS AND SPECIES

SCIENTIFIC NAME	ORDER	FAMILY	COMMON NAME	MAIN HOST PLANT(S) OR INSECT TYPE	IMPORTANCE RATING
<i>Abagrotis</i> <i>alternata</i> (Grt.)	Lepidoptera	Noctuidae	owlet moth	unknown	C
<i>Abbotana</i> <i>clemataria</i> (J.E. Smith)	"	Geometridae	purplish-brown looper	general feeder	C
<i>Abgrallaspis</i> <i>ithacae</i> (Ferris)	Homoptera	Coccidae	<u>hemlock scale</u>	spruce, fir, hemlock	C
<i>Acantholyda</i> <i>erythrocephala</i> (Linn.)	Hymenoptera	Pamphiliidae	<u>pine false webworm</u>	pine	A
<i>luteomaculata</i> (Cress.)	"	"	webspinning sawfly	pine	C
<i>maculiventris</i> (Nort.)	"	"	" "	spruce, balsam fir	C
<i>Aceria</i> sp. nr. <i>dispar</i> Nalepa	Acarina	Eriophyidae	aspen leaf mite	aspen	B
<i>fraxiniflora</i> Felt	"	"	ash flowergall mite	ash	C
<i>parapopuli</i> (Keifer)	"	"	poplar budgall mite	poplar	C
<i>rudis</i> complex	"	"	birch budgall mite	birch	C
<i>ulmi</i> (Garman)	"	"	elm leafgall mite	elm	C
<i>Acholla</i> <i>multispinosa</i> DeG.	Hemiptera	Reduviidae	assassin bug	predator	D
<i>Acleris</i> <i>braunana</i> McD.	Lepidoptera	Tortricidae	leafroller	alder, birch	C
<i>calignosana</i> Wlk.	"	"	"	birch, alder	C
<i>celiana</i> Rob.	"	"	"	deciduous	C
<i>celiana albilineana</i> Kft.	"	"	"	birch	C
<i>chalybeana</i> Fern.	"	"	lesser maple leafroller	maple	
<i>cornana</i> McD.	"	"	leafroller	dogwood, alder	C
<i>emargana</i> Fabr.	"	"	"	willow, poplar	C

SCIENTIFIC NAME	ORDER	FAMILY	COMMON NAME	MAIN HOST PLANT(S) OR INSECT TYPE	IMPORTANCE RATING
<i>Acleris</i>					
<i>fishiana</i> Fern.	Lepidoptera	Tortricidae	leafroller	deciduous	C
<i>fuscana</i> B. & B.	"	"	"	"	C
<i>gallicolana</i> Clem.	"	"	"	willow	C
<i>gallicolana heindelana</i> Fern.	"	"	"	willow, poplar	C
<i>hudsoniana</i> Wlk.	"	"	"	general feeder	C
<i>kearfottana</i> McD.	"	"	"	ground plants	F
<i>logiana</i> Linn.	"	"	blackheaded birch leaffolder	birch, alder	C
<i>logiana placidana</i> Rob.	"	"	blackheaded birch leaffolder	birch	C
<i>logiana trisignana</i> Rob.	"	"	blackheaded birch leaffolder	"	C
<i>minuta</i> (Robinson)	"	"	<u>yellowheaded</u> <u>fireworm</u>	leatherleaf	F
<i>nigrolinea</i> Rob.	"	"	leafroller	deciduous	C
<i>nigrolinea ferruginiguttana</i> Fern.	"	"	"	poplar	C
<i>nivisellana</i> Wlsh.	"	"	"	mountain ash	C
<i>oxycoccana</i> Pack.	"	"	"	blueberry	F
<i>semiannula</i> Rob.	"	"	"	birch	C
<i>subnivana</i> Wlk.	"	"	"	oak	C
<i>variana</i> (Fern.)	"	"	<u>eastern blackheaded</u> <u>budworm</u>	spruce, balsam fir	B
<i>variana angusana</i> (Fern.)	"	"	blackheaded budworm	spruce, hemlock	C
<i>Acmaeops</i>					
<i>pratensis</i> (Laich.)	Coleoptera	Cerambycidae	longhorned beetle	spruce	C
<i>proteus</i> (Kby.)	"	"	"	coniferous	C
<i>Acordulecera</i>					
<i>dorsalis</i> Say	Hymenoptera	Tenthredinidae	sawfly	oak, nut trees	C
<i>quercus</i> Roh.	"	"	"	" " "	C



<i>Acraspis</i>					
<i>erinacei</i> (Beutm.)	Hymenoptera	Cynipidae	gall wasp	oak	C
<i>Acrobasis</i>					
<i>angusella</i> Grote	Lepidoptera	Pyralidae	leafstem borer	hickory, walnut	C
<i>betulella</i> Hlst.	"	"	<u>birch tubemaker</u>	white birch	C
<i>caryae</i> Grt.	"	"	hickory shoot borer	hickory	C
<i>caryivorella</i> Rag.	"	"	shoot borer-and-tier	hickory, walnut	C
<i>comptoniella</i> Hlst.	"	"	<u>sweetfern leaf case-</u> <u>bearer</u>	sweetfern	F
<i>juglandis</i> (LeBar.)	"	"	<u>pecan leaf casebearer</u>	walnut, hickory	C
<i>kearfottella</i> Dyar	"	"	tubemaker	hickory, butternut	C
<i>rubrifasciella</i> Pack.	"	"	alder tubemaker	alder	C
<i>stigmella</i> Dyar	"	"	hickory bud-and-shoot borer	hickory	C
<i>sylviella</i> Ely.	"	"	ironwood tubemaker	ironwood	C
<i>tricolorella</i> Grt.	"	"	tubemaker	deciduous	C
<i>Acrocercops</i>					
<i>albinatella</i> Cham.	Lepidoptera	Gracillariidae	leafminer moth	red oak	C
<i>Acronieta</i>					
<i>afflicta</i> Grt.	"	Noctuidae	owlet moth	oak	C
<i>americana</i> (Harr.)	"	"	<u>American dagger moth</u>	deciduous	C
<i>clarescens</i> Gn.	"	"	owlet moth	"	C
<i>dactylina</i> (Grt.)	"	"	alder dagger moth	"	C
<i>fragilis</i> (Gn.)	"	"	fragile dagger moth	"	C
<i>funeralis</i> G. & R.	"	"	paddle caterpillar	"	C
<i>furcifera</i> Gn.	"	"	owlet moth	cherry	C
<i>grisea</i> Wlk.	"	"	gray dagger moth	"	C
<i>haesitata</i> (Grt.)	"	"	owlet moth	oak	C
<i>hasta</i> Gn.	"	"	cherry dagger moth	cherry	C
<i>impleta</i> Wlk.	"	"	owlet moth	deciduous	C
<i>impressa</i> Wlk.	"	"	" "	"	C
<i>innotata</i> Gn.	"	"	birch dagger moth	"	C

SCIENTIFIC NAME	ORDER	FAMILY	COMMON NAME	MAIN HOST PLANT(S) OR INSECT TYPE	IMPORTANCE RATING
<i>Acronicta</i>					
<i>interrupta</i> Gn.	Lepidoptera	Noctuidae	owlet moth	deciduous	C
<i>lanceolaria</i> (Grt.)	"	"	" "	general feeder	C
<i>leporina</i> (Linn.)	"	"	poplar dagger moth	deciduous	C
<i>lepusculina</i> Gn.	"	"	<u>cottonwood dagger moth</u>	"	C
<i>lithospila</i> Grt.	"	"	owlet moth	oak	C
<i>morula</i> G. & R.	"	"	ochre dagger moth	deciduous	C
<i>oblinita</i> (J.E. Smith)	"	"	<u>smearred dagger moth</u>	general feeder	C
<i>ovata</i> Grt.	"	"	oak dagger moth	oak	C
<i>quadrata</i> (Grt.)	"	"	cherry dagger moth	cherry, plum	C
<i>radcliffei</i> (Harv.)	"	"	owlet moth	deciduous	C
<i>retardata</i> (Wlk.)	"	"	maple dagger moth	maple	C
<i>sperata</i> Grt.	"	"	owlet moth	deciduous	C
<i>superans</i> Gn.	"	"	" "	"	C
<i>tristis</i> Sm.	"	"	sad dagger moth	beech, maple	C
<i>vinmula</i> (Grt.)	"	"	elm dagger moth	white elm	C
<i>Actebia</i>					
<i>fennica</i> (Tausch.)	Lepidoptera	Noctuidae	<u>black army cutworm</u>	general feeder	A
<i>Actias</i>					
<i>luna</i> (Linn.)	Lepidoptera	Saturniidae	<u>luna moth</u>	deciduous	C
<i>Adalia</i>					
<i>bipunctata</i> (Linn.)	Coleoptera	Coccinellidae	<u>twospotted lady</u> <u>beetle</u>	predator	D
<i>frigida</i> Schn.	"	"	lady beetle	"	D
<i>Adelges</i>					
<i>abietis</i> (Linn.)	Homoptera	Phylloxeridae (= Adelgidae)	<u>eastern spruce gall</u> <u>adelgid</u>	spruce	B
<i>cooleyi</i> (Gill.)	"	"	<u>Cooley spruce gall</u> <u>adelgid</u>	spruce, Douglas-fir	C
<i>lariciatus</i> (Patch)	"	"	spruce gall adelgid	spruce, larch	B
<i>piceae</i> (Ratz.)	"	"	<u>balsam woolly adelgid</u>	balsam fir	E
<i>strobilobius</i> (Kalt.)	"	"	<u>pale spruce gall</u> adelgid	black spruce, larch	C

<i>Adoxophyes negundana</i> McD.	Lepidoptera	Tortricidae	leafroller moth	Manitoba maple	C	
<i>Adoxus obscurus</i> (Linn.)	Coleoptera	Chrysomelidae	leaf beetle	deciduous	C	
<i>Aegeria tibialis</i> Harr.	Lepidoptera	Sesiidae	cottonwood crown borer	poplar	C	
<i>Aeschna</i> sp.	Odonata	Aeschnidae	dragon fly	predator	D	
<i>Aethalura anticaria</i> Wlk.	Lepidoptera	Geometridae	looper	deciduous	C	
<i>Aethes rutilana</i> (Hbn.)	"	Phaloniidae	<u>Pale juniper webworm</u>	juniper	C	61
<i>Agathis pumila</i> (Ratz.)	Hymenoptera	Braconidae	parasite	larch casebearer	D	
<i>Agonopterix argillacea</i> Wlsh.	Lepidoptera	Oecophoridae	micro moth	deciduous	C	
<i>nigrinotella</i> (Busck.)	"	"	" "	hop-tree	C	
<i>robiniella</i> Pack.	"	"	" "	locust	C	
<i>Agonum sinuatum</i> Dej.	Coleoptera	Carabidae	ground beetle	predator	D	
<i>Agrilus anxius</i> Gory	"	Buprestidae	<u>bronze birch borer</u>	birch	B	
<i>bilineatus</i> (Web.)	"	"	<u>twolined chestnut borer</u>	oak, chestnut	C	
<i>egenus</i> Gory	"	"	flatheaded wood borer	locust, hickory	C	
<i>viragus</i> Bart. & Br.	"	"	<u>bronze poplar borer</u>	poplar	B	
<i>politus</i> (Say)	"	"	willow gall limb borer	willow	C	

SCIENTIFIC NAME	ORDER	FAMILY	COMMON NAME	MAIN HOST PLANT(S) OR INSECT TYPE	IMPORTANCE RATING
<i>Agrilus</i> <i>ruficollis</i> (Fab.)	Coleoptera	Buprestidae	<u>rednecked cane borer</u>	blackberry	C
<i>Agriotes</i> <i>collaris</i> Lec.	"	Elateridae	click beetle	soil insect	F
<i>fucosis</i> Lec.	"	"	" "	" "	F
<i>limosus</i> (Lec.)	"	"	little brown click beetle	" "	F
<i>mancus</i> (Say)	"	"	wheat wireworm	agricultural pest	F
<i>stabilis</i> Lec.	"	"	" "	soil insect	F
<i>Agromyza</i> <i>aristata</i> Mall. (= <i>ulmi</i> Frost)	Diptera	Agromyzidae	elm agromyzid leaf- miner	elm	C
<i>melampyga</i> Loew	"	"	mock orange leaf- miner	mock orange	C
<i>Agroperina</i> <i>cogitata</i> (Sm.)	Lepidoptera	Noctuidae	cutworm	grass	F
<i>dubitans</i> (Wlk.)	"	"	"	"	F
<i>Agrotis</i> <i>mollis</i> Wlk.	"	"	cutworm	unknown	C
<i>ippsilon</i> (Hufnagel)	"	"	<u>black cutworm</u>	general feeder	C
<i>Alabama</i> <i>argillacea</i> (Hbn.)	"	"	<u>cotton leafworm</u>	unknown here	F
<i>Alaus</i> <i>oculatus</i> (Linn.)	Coleoptera	Elateridae	<u>largeeyed click beetle</u>	predator	D

<i>Allantus basalis</i> Klug.	Hymenoptera	Tenthredinidae	birch sawfly	birch	C
<i>Allononyma diana</i> Hbn.	Lepidoptera	Glyphipterygidae	micro moth	deciduous	C
<i>Alobates pennsylvanica</i> DeG.	Coleoptera	Tenebrionidae	beetle	household pest	G
<i>Alsophila pometaria</i> (Harr.)	Lepidoptera	Geometridae	<u>fall cankerworm</u>	deciduous	A
<i>Altica</i>					
<i>ambiens alni</i> Harr.	Coleoptera	Chrysomelidae	<u>alder flea beetle</u>	alder	B
<i>chalybea</i> (Ill.)	"	"	<u>grape flea beetle</u>	grape	F
<i>corni</i> Woods	"	"	dogwood flea beetle	dogwood	C
<i>populi</i> Brown	"	"	poplar flea beetle	poplar	C
<i>rosae</i> Woods	"	"	rose flea beetle	rose	C
<i>subplicata</i> Lec.	"	"	willow flea beetle	willow	C
<i>tombacina shoemakeri</i> Schaeffer	"	"	flea beetle	ground plants	F
<i>ulmi</i> Woods	"	"	<u>elm flea beetle</u>	elm	B
<i>Alypia</i>					
<i>langtoni</i> Couper	Lepidoptera	Agaristidae	fireweed caterpillar	fireweed	F
<i>octomaculata</i> (Fabr.)	"	"	<u>eightspotted forester</u>	grapevine, virginia creeper	C
<i>Amara</i>					
<i>interstitialis</i> (DeJ.)	Coleoptera	Carabidae	ground beetle	predator	D
<i>Amathes</i>					
<i>c-nigrum</i> (Linn.)	Lepidoptera	Noctuidae	<u>spotted cutworm</u>	agricultural pest	F
<i>normaniana</i> (Grt.)	"	"	cutworm	plantain	C
<i>smithii</i> (Snell.)	"	"	"	general feeder	C

SCIENTIFIC NAME	ORDER	FAMILY	COMMON NAME	MAIN HOST PLANT(S) OR INSECT TYPE	IMPORTANCE RATING
<i>Amauronematus fallax</i> (Lep.)	Hymenoptera	Tenthredinidae	sawfly	white birch	C
<i>gracilis</i> Marl.	"	"	"	willow	C
<i>histrion</i> (Lep.)	"	"	"	"	C
<i>spiniserra</i> Ruthe.	"	"	"	"	C
<i>Ametastegia recens</i> (Say)	"	"	willow sawfly	deciduous	C
<i>Ammophila arvensis</i> (Dahlb.)	"	Sphecidae	wasp	predator	D
<i>Ampedus apicatus</i> Say	Coleoptera	Elateridae	click beetle	soil insect	F
<i>luctuosus</i> (Lec.)	"	"	" "	" "	F
<i>melanotoides</i> Brown	"	"	" "	" "	F
<i>melsheimeri</i> Leng	"	"	" "	" "	F
<i>mixtus</i> Hbst.	"	"	" "	" "	F
<i>pullus</i> Germ.	"	"	" "	" "	F
<i>semicinctus</i> Rand.	"	"	" "	" "	F
<i>Amphibolips confluenta</i> (Harr.)	Hymenoptera	Cynipidae	spongy oak apple gall	oak	C
<i>inanis</i> (O.S.)	"	"	large oak apple gall	"	C
<i>Amphipyra pyramidoides</i> Gn.	Lepidoptera	Noctuidae	rearhumped caterpillar	deciduous	C
<i>Anacamptis innocuella</i> Zell.	"	Gelechiidae	darkheaded aspen leafroller	poplar	C
<i>Anacamptodes ephyraria</i> Wlk.	"	Geometridae	looper	deciduous	C
<i>larvaria</i> Gn. (see <i>Iridopsis</i> )	"	"	"	coniferous	C
<i>vellivolata</i> Hlst.	"	"	"	"	C

<i>Anagasta kuehniella</i> (Zell.)	Lepidoptera	Pyralidae	<u>Mediterranean flour moth</u>	household pest	C
<i>Anagoga occiduaria</i> Wlk.	Lepidoptera	Geometridae	looper	deciduous	C
<i>Anagrapha falcifera</i> (Kby.)	"	Noctuidae	<u>celery looper</u>	agricultural pest	G
<i>Anaplectoides pressus</i> (Grt.)	"	"	dagger moth	unknown	C
<i>Anathix puta</i> (G. & R.)	"	"	poplar catkin moth	poplar	C
<i>Anatis labiculata</i> (Say)	Coleoptera	Coccinellidae	fifteenspotted lady beetle	predator	D
<i>mali</i> (Say)	"	"	eyespotted lady beetle	"	D
<i>Anavitrinella pampinaria</i> Gn.	Lepidoptera	Geometridae	cranberry spanworm	general feeder	C
<i>Anchylopera burgessiana</i> Zell.	"	Olethreutidae	oak leaffolder	red oak	C
<i>burgessiana pruni</i> Heinr.	"	"	cherry leaffolder	cherry	C
<i>discigerana</i> Wlk.	"	"	yellow birch leaf-folder	birch	C
<i>dubiana</i> Clem.	"	"	oak leaffolder	oak	C
<i>furvescens</i> Heinr.	"	"	alder leaffolder	alder	C
<i>fuscociliana</i> Clem.	"	"	elm leaffolder	elm, oak	C
<i>nubeculana</i> Clem.	"	"	cherry leaffolder	deciduous	C
<i>spireaefoliana</i> Clem.	"	"	ninebark leaffolder	ninebark	C
<i>subaequana</i> Zell.	"	"	willow leaffolder	willow	C

SCIENTIFIC NAME	ORDER	FAMILY	COMMON NAME	MAIN HOST PLANT(S) OR INSECT TYPE	IMPORTANCE RATING
<i>Ancylus mediofasciana</i> Clem.	Lepidoptera	Olethreutidae	serviceberry leaf- berry	serviceberry, cherry	C
<i>Andricus flocci</i> (O.S.)	Hymenoptera	Cynipidae	gall wasp	oak	C
<i>Androchirus erythropus</i> Kby.	Coleoptera	Alleculidae	combclawed beetle	unknown	F
<i>Anisocalvia duodecimmaculata</i> Gebl.	Coleoptera	Coccinellidae	twelvespotted lady beetle	predator	D
<i>quatuordecimguttata</i> Linn.	"	"	fourteenspotted lady beetle	"	D
<i>Anisota finlaysoni</i> Riotte ( <i>rubicunda alba</i> Grt.) see <i>Dryocampa</i> ( <i>rubicunda</i> Fabr.) see <i>Dryocampa</i> <i>senatoria</i> (J.E. Smith) <i>stigma stigma</i> (Fabr.) <i>virginiensis virginiensis</i> (Dru.)	Lepidoptera	Citheroniidae	shorthorned oakworm	oak	A
	"	"	<u>orangestriped oakworm</u>	oak	A
	"	"	<u>spiny oakworm</u>	"	C
	"	"	<u>pinkstriped oakworm</u>	"	B
<i>Anobium punctatum</i> (DeG.)	Coleoptera	Anobiidae	<u>furniture beetle</u>	dry wood	F
<i>Anomoea laticlavata</i> (Forst.)	"	Chrysomelidae	<u>claycolored leaf beetle</u>	deciduous	C



<i>Anomogyna</i>					
<i>elimata</i> (Gn.)	Lepidoptera	Noctuidae	chameleon caterpillar	coniferous	C
<i>perquiritata</i> (Morr.)	"	"	gray spruce cutworm	"	C
<i>Anopheles</i>					
<i>quadrifasciatus</i> Say	Diptera	Culicidae	<u>common malaria</u> <u>mosquito</u>	biting flies	F
<i>Anoplodera</i>					
<i>biforis</i> (Newm.)	Coleoptera	Cerambycidae	longhorn beetle	general feeder	C
<i>canadensis</i> (Oliv.)	"	"	red-shouldered pine borer	coniferous	C
<i>chrysocoma</i> (Oliv.)	"	"	longhorn beetle	unknown	C
<i>minnesotana</i> (Csy.)	"	"	Minnesota longhorn beetle	deciduous	C
<i>nigrella</i> (Say)	"	"	longhorn beetle	unknown	C
<i>proxima</i> (Say)	"	"	" "	gum tree	C
<i>pubera</i> (Say)	"	"	" "	unknown	C
<i>sanguinea</i> Lec.	"	"	" "	"	C
<i>sexmaculata</i> (Linn.)	"	"	" "	"	C
<i>vittata</i> (Swed.)	"	"	" "	general feeder	C
<i>Anoplonyx</i>					
<i>canadensis</i> Hgtn.	Hymenoptera	Tenthredinidae	onelined larch sawfly	larch	C
<i>luteipes</i> Cress.	"	"	threelined larch sawfly	"	C
<i>Anthaxia</i>					
<i>aeneogaster</i> Cast.	Coleoptera	Buprestidae	flatheaded wood borer	unknown	C
<i>viridifrons</i> Gory	"	"	hickory twig borer	elm, hickory	C
<i>Antheraea</i>					
<i>polyphemus polyphemus</i> (Cram.)	Lepidoptera	Saturniidae	<u>polyphemus moth</u>	deciduous	C

SCIENTIFIC NAME	ORDER	FAMILY	COMMON NAME	MAIN HOST PLANT(S) OR INSECT TYPE	IMPORTANCE RATING
<i>Anthophila pariana</i> Cl.	Lepidoptera	Glyphipterygidae	<u>apple-and-thorn skeletonizer</u>	apple	C
<i>Anthophilax attenuatus</i> (Hald.)	Coleoptera	Cerambycidae	mottled longhorned beetle	decaying hardwoods	C
<i>malachiticus</i> (Hald.)	"	"	green longhorned beetle	" "	C
<i>Antispila cornifoliella</i> Clem.	Lepidoptera	Heliozelidae	dogwood leafminer	dogwood	C
<i>nyssaefoliella</i> Clem.	"	"	<u>tupelo leafminer</u>	blackgum	C
<i>Apamea amputatrix</i> (Fitch)	"	Noctuidae	<u>yellowheaded cutworm</u>	not known	F
<i>Apantesis parthenice</i> Kby.	"	Arctiidae	tiger moth	general feeder	C
<i>Apateticus bracteatus</i> (Fitch)	Hemiptera	Pentatomidae	stink bug	predator	D
<i>cynicus</i> (Say)	"	Pentatomidae	" "	"	D
<i>Aphania albeolana</i> Zell.	Lepidoptera	Olethreutidae	leafroller	birch	C
<i>capreana</i> Hbn.	"	"	"	deciduous	C
<i>tertiana</i> McD.	"	"	"	"	C
<i>youngana</i> McD.	"	"	"	"	C
<i>Aphelia alleniana</i> (Fern.)	"	Tortricidae	pine-and-clover tier	pine, clover	C
<i>pallorana</i> (Rob.)	"	"	" " " "	" "	C

<i>Aphis</i>					
<i>maculatae</i> (Oestlund)	Homoptera	Aphididae	spotted poplar aphid	poplar	C
<i>pomi</i> (DeGeer)	"	"	<u>apple aphid</u>	apple	F
<i>Aphodius</i>					
<i>erraticus</i> L.	Coleoptera	Scarabaeidae	scarab beetle	unknown	C
<i>fimetarius</i> L.	"	"	" "	"	C
<i>fossor</i> (L.)	"	"	" "	"	C
<i>Aphorophora</i>					
<i>cribrata</i> (Walker)	Homoptera	Cercopidae	pine spittlebug	nymphs and adults on conifers	B
<i>parallela</i> (Say)	"	"	spittlebug	adults on conifers	C
<i>saratogensis</i> (Fitch)	"	"	<u>Saratoga spittlebug</u>	adults on pine	B
<i>Apion</i>					
<i>longirostre</i> Oliv.	Coleoptera	Curculionidae	<u>hollyhock weevil</u>	hollyhock	F
<i>nigrum</i> Hbst.	"	"	black locust seed weevil	black locust	C
<i>simile</i> Kby.	"	"	birch catkin weevil	birch	C
<i>Apotomis</i>					
<i>deceptana</i> (Kft.)	Lepidoptera	Olethreutidae	leafroller	aspen	C
<i>dextrana</i> (McD.)	"	"	green aspen leaf- roller	"	C
<i>Archippus</i>					
<i>albertus</i> McD.	Lepidoptera	Tortricidae	spruce cone moth	spruce	C
<i>dissitanus</i> Grt.	"	"	spruce needle moth	coniferous	C
<i>packardianus</i> Fern.	"	"	spring spruce needle moth	spruce, fir	C
<i>striatus</i> Fern.	"	"	lined spruce needle moth	spruce, fir	C
<i>Archips</i>					
<i>argyrospilus</i> (Wlk.)	Lepidoptera	Tortricidae	<u>fruittree leafroller</u>	deciduous	C
<i>cerasivoranus</i> (Fitch.)	"	"	uglynest caterpillar	cherry	B
<i>fervidanus</i> (Clem.)	"	"	<u>oak webworm</u>	oak	C

SCIENTIFIC NAME	ORDER	FAMILY	COMMON NAME	MAIN HOST PLANT(S) OR INSECT TYPE	IMPORTANCE RATING
<i>Archips</i>					
<i>infumatus</i> (Zeller)	Lepidoptera	Tortricidae	hickory webworm	walnut, hickory	C
<i>mortuanus</i> Kft.	"	"	dusky back leafroller	deciduous	C
<i>myricanus</i> (McD.)	"	"	leafroller	"	C
<i>negundanus</i> (Dyar)	"	"	larger boxelder leaf- roller	Manitoba maple	B
<i>purpuranus</i> Clem.	"	"	omnivorus leafroller	deciduous	C
<i>rosanus</i> (Linn.)	"	"	European leafroller	"	C
<i>Arctia</i>					
<i>caja</i> (L.)	"	Arctiidae	garden tiger moth	"	C
<i>Arge</i>					
<i>clavicornis</i> (F.)	Hymenoptera	Argidae	sawfly	deciduous	C
<i>pectoralis</i> (Leach)	"	"	<u>birch sawfly</u>	birch	B
<i>scapularis</i> (Klug)	"	"	oak sawfly	oak, elm	B
<i>Argynnis</i>					
<i>aphrodite</i> Fabr.	Lepidoptera	Nymphalidae	fritillary butterfly	violets	F
<i>cybele</i> Fabr.	"	"	great spangled fritillary	"	F
<i>Argyresthia</i>					
<i>abies</i> Free.	Lepidoptera	Yponomeutidae	balsam fir tipminer	balsam fir	C
<i>affinis</i> Brower	"	"	juniper leafminer	red juniper	C
<i>aureoargentella</i> Braun	"	"	cedar leafminer	cedar	B
<i>canadensis</i> Free.	"	"	" "	"	B
<i>freyella</i> Wlshm.	"	"	red juniper leafminer	red juniper	B
<i>goedartella</i> Linn.	"	"	birch ermine moth	birch	C
<i>laricella</i> Kft.	"	"	larch shoot moth	larch	B
<i>mariana</i> Free.	"	"	black spruce tipminer	black spruce	C
<i>oreasella</i> Clem.	"	"	cherry shoot borer	cherry	C
<i>picea</i> Free.	"	"	white spruce tipminer	white spruce	C

<i>Argyresthia</i>					
<i>pygmaeella</i> Hbn.	Lepidoptera	Yponomeutidae	willow leaf tier	willow	C
<i>thuiella</i> Pack.	"	"	<u>arborvitae leaf miner</u>	cedar	A
<i>Argyrotaenia</i>					
<i>juglandana</i> (Fern.)	"	Tortricidae	<u>hickory leaf roller</u>	hickory	C
<i>mariana</i> (Fern.)	"	"	<u>graybanded leaf roller</u>	deciduous	C
<i>occultana</i> Free.	"	"	fall spruce needle moth	coniferous	C
<i>pinatubana</i> (Kft.)	"	"	<u>pine tube moth</u>	white pine	C
<i>quadrifasciana</i> Fern.	"	"	fourlined leaf roller	cherry, serviceberry	C
<i>quercifoliana</i> Fitch	"	"	tortricid oakworm	oak	C
<i>tabulana</i> Free.	"	"	jackpine tube moth	jack pine	C
<i>velutinana</i> (Wlk.)	"	"	<u>redbanded leaf roller</u>	general feeder	C
<i>Arhopalus</i>					
<i>foveicollis</i> (Hald.)	Coleoptera	Cerambycidae	pitted longhorned beetle	unknown	C
<i>Aristotelia</i>					
<i>fungivorella</i> Clem.	Lepidoptera	Gelechiidae	micro moth	willow	C
<i>Arthromacra</i>					
<i>aenea</i> Say	Coleoptera	Lagriidae	metallic beetle	scavenger	F
<i>Asemum</i>					
<i>striatum</i> (L.)	"	Cerambycidae	opaque sawyer	pine	C
<i>Asiphum</i>					
<i>rosettei</i> Maxson	Homoptera	Aphididae	aspen aphid	poplar	C
<i>Asterocampa</i>					
<i>celtis</i> Bdv. & Lec.	Lepidoptera	Nymphalidae	hackberry butterfly	hackberry	C
<i>Asterolecanium</i>					
<i>variolosum</i> (Ratz.)	Homoptera	Asterolecaniidae	<u>golden oak scale</u>	oak, chestnut	C

SCIENTIFIC NAME	ORDER	FAMILY	COMMON NAME	MAIN HOST PLANT(S) OR INSECT TYPE	IMPORTANCE RATING
<i>Atomacera debilis</i> (Say)	Hymenoptera	Argidae	trefoil sawfly	trefoil	F
<i>Attelabus bipustulatis</i> Fab.	Coleoptera	Curculionidae	leafrolling weevil	deciduous	C
<i>Atteva punctella</i> (Cramer)	Lepidoptera	Yponomeutidae	<u>ailanthus webworm</u>	tree of heaven	C
<i>Autographa ampla</i> (Wlk.)	"	Noctuidae	dagger moth	deciduous	C
<i>mappa</i> (G. & R.)	"	"	" "	shrubs, plants	C
<i>Automeris io</i> (Fabr.)	"	Saturniidae	<u>io moth</u>	deciduous	C
<i>Badebecia urticana</i> Hbn.	"	Olethreutidae	leafroller	"	C
<i>Baileya dormitans</i> Gn.	Lepidoptera	Nycteolidae	macro moth	deciduous	C
<i>doubledayi</i> Gn.	"	"	" "	alder	C
<i>ophthalmica</i> Gn.	"	"	" "	deciduous	C
<i>Baliosus ruber</i> (Web.)	Coleoptera	Chrysomelidae	<u>basswood leafminer</u>	basswood	B
<i>Balsa malana</i> (Fitch)	Lepidoptera	Noctuidae	owlet moth	apple	C
<i>Banasa dimidiata</i> Say	Hemiptera	Pentatomidae	banasa stink bug	predator	D

<i>Bapta</i>					
<i>glomeraria</i> Grt.	Lepidoptera	Geometridae	looper	deciduous	C
<i>semiclarata</i> Wlk.	"	"	wildcherry looper	"	C
<i>vestaliata</i> Gn.	"	"	looper	"	C
<i>Barbara</i>					
<i>mappana</i> Free.	"	Olethreutidae	cone moth	balsam fir, white spruce	C
<i>Bassareus</i>					
<i>sellatus</i> Suffr.	Coleoptera	Chrysomelidae	leaf beetle	deciduous	C
<i>Batrachedra</i>					
<i>praeangusta</i> Haw.	Lepidoptera	Cosmopterygidae	poplar shoot moth	poplar	C
<i>Battus</i>					
<i>philenor</i> (Linn.)	"	Papilionidae	<u>pipevine swallowtail</u>	pipevine	C
<i>Besma</i>					
<i>endropiaria</i> G. & R.	"	Geometridae	looper	deciduous	C
<i>quercivoraria</i> Gn.	"	"	"	"	C
<i>Bessa</i>					
<i>harveyi</i> (Tns.)	Diptera	Tachinidae	parasitic fly	parasite	D
<i>Bibarrambla</i>					
<i>allenella</i> (Wlsh.)	Lepidoptera	Oecophoridae	birch-and-alder leftier	birch, alder	C
<i>Bibio</i>					
<i>xanthopus</i> Wied.	Diptera	Bibionidae	March fly	vegetable matter	F
<i>Biston</i>					
<i>betularia cognataria</i> (Gn.)	Lepidoptera	Geometridae	<u>pepper-and-salt moth</u>	deciduous	C

SCIENTIFIC NAME	ORDER	FAMILY	COMMON NAME	MAIN HOST PLANT(S) OR INSECT TYPE	IMPORTANCE RATING
<i>Blattella germanica</i> (Linn.)	Orthoptera	Blattidae	<u>German cockroach</u>	household pest	G
<i>Blepharida rhois</i> Forst.	Coleoptera	Chrysomelidae	sumac leaf beetle	sumac	C
<i>Bomolocha abalienalis</i> Wlk.	Lepidoptera	Noctuidae	owlet moth	deciduous	C
<i>baltimoralis</i> Gn.	"	"	" "	maple	C
<i>bijugalis</i> Wlk.	"	"	" "	dogwood	C
<i>deceptalis</i> (Wlk.)	"	"	basswood owlet moth	basswood	C
<i>palparia</i> Wlk.	"	"	owlet moth	deciduous	C
<i>Brachyacantha felina</i> F.	Coleoptera	Coccinellidae	lady beetle	predator	D
<i>ursina</i> F.	"	"	" "	"	D
<i>(Brachyrhinus)</i> see <i>Otiorhynchus</i>					
<i>Brachys aerosus</i> Melsh.	"	Buprestidae	leafmining beetle	oak, aspen	C
<i>rufescens</i> N. & W.	"	"	" "	unknown	C
<i>ovatus</i> (Web.)	"	"	" "	oak, aspen	C
<i>Brephos infans</i> Moesch.	Lepidoptera	Geometridae	looper	deciduous	C
<i>Brochymena quadripustulata</i> F.	Hemiptera	Pentatomidae	fourhumped stink bug	predator	D
<i>Bucculatrix ainsliella</i> Murt.	Lepidoptera	Lyonetiidae	<u>oak skeletonizer</u>	oak	C
<i>canadensisella</i> Cham.	"	"	<u>birch skeletonizer</u>	birch	A



<i>Buprestis</i>					
<i>fasciata</i> F.	Coleoptera	Buprestidae	flatheaded wood borer	general	C
<i>maculativentris</i> Say	"	"	ventrally spotted	balsam fir, spruce	C
			buprestid		
<i>nuttali</i> Kby.	"	"	flatheaded wood borer	coniferous	C
<i>striata</i> F.	"	"	" " "	"	C
<i>Caenurgina</i>					
<i>crassiuscula</i> (Haw.)	Lepidoptera	Noctuidae	<u>clover looper</u>	clover	F
<i>Caliroa</i>					
<i>cerasi</i> (Linn.)	Hymenoptera	Tenthredinidae	<u>pear sawfly</u>	mountain ash, fruit	C
				trees	
<i>fasciata</i> (Norton)	"	"	oak slug sawfly	oak	C
<i>Callidium</i>					
<i>frigidum</i> Casey	Coleoptera	Cerambycidae	longhorned beetle	dead cedar and juniper	C
<i>violaceum</i> (L.)	"	"	" "	dead pine	C
<i>Calligrapha</i>					
<i>alni</i> Schffr.	"	Chrysomelidae	russet alder leaf	alder	C
			beetle		
<i>amator</i> Brown	"	"	basswood leaf beetle	basswood	C
<i>apicalis</i> Notm.	"	"	alder " "	alder	C
<i>confluens</i> Schffr.	"	"	alder leaf beetle	alder	C
<i>ignota</i> Brown	"	"	birch leaf beetle	birch	C
<i>multipunctata bigsbyana</i> Kby.	"	"	willow leaf beetle	willow, poplar	C
<i>philadelphica</i> Linn.	"	"	dogwood leaf beetle	deciduous	C
<i>rhoda</i> Knab.	"	"	hazel leaf beetle	hazel	C
<i>scalaris</i> (Lec.)	"	"	<u>elm calligrapha</u>	elm	C
<i>tiliae</i> Brown	"	"	basswood leaf beetle	basswood	C

SCIENTIFIC NAME	ORDER	FAMILY	COMMON NAME	MAIN HOST PLANT(S) OR INSECT TYPE	IMPORTANCE RATING
<i>Callirhytis</i>					
<i>cornigera</i> (O. & S.)	Hymenoptera	Cynipidae	horned oak gall wasp	oak	C
<i>futilis</i> (O. & S.)	"	"	oak gall wasp	"	C
<i>gemmaria</i> (Ashmead)	"	"	ribbed bud gall wasp	"	C
<i>modesta</i> (O. & S.)	"	"	oak gall wasp	"	C
<i>operator</i> (O. & S.)	"	"	woolly blossom gall wasp	"	C
<i>punctata</i> (O. & S.)	"	"	gouty oak gall wasp	"	C
<i>seminator</i> (Harr.)	"	"	wool sower wasp	"	C
<i>tumifica</i> (O. & S.)	"	"	oak leaf gall wasp	"	C
<i>Callophrys</i>					
<i>niphon clarki</i> (Free.)	Lepidoptera	Lycaenidae	pine elfin	pine, spruce	C
<i>Callosamia promethea</i> (Dru.)	Lepidoptera	Saturniidae	<u>promethea moth</u>	deciduous	C
<i>Calopteryx</i>					
<i>maculata</i> Beauv.	Odonata	Coenagrionidae	damsel fly	predator	D
<i>Caloptilia</i> (all species of Gracillaria may belong here)					
<i>cuculipennella</i> (Hbn.)	Lepidoptera	Gracillariidae	<u>privet leafminer</u>	ash	C
<i>negundella</i> (Chamb.)	"	"	<u>boxelder leafroller</u>	Manitoba maple	C
<i>syringella</i> (Fab.)	"	"	<u>lilac leafminer</u>	lilac	B
<i>Calosoma</i>					
<i>calidum</i> (F.)	Coleoptera	Carabidae	<u>fiery hunter</u>	predator	D
<i>frigidum</i> Kby.	"	"	ground beetle	"	D
<i>scrutator</i> F.	"	"	" "	"	D
<i>Cameraria</i> (Lithocolletis)					
<i>aceriella</i> (Clem.)	Lepidoptera	Gracillariidae	maple leafblotch miner	maple	C

<i>Cameraria</i> (Lithocolletis) <i>betulivora</i> (Wlsh.)	Lepidoptera	Gracillariidae	birch leafblotch miner	birch	C
<i>cincinnatiella</i> (Clem.)	"	"	hickory leafblotch miner	hickory	C
<i>cincinnatiella</i> (Cham.)	"	"	<u>gregarious oak leaf-</u> <u>miner</u>	oak	C
<i>fletcherella</i> (Braun)	"	"	oak leafblotch miner	oak	C
<i>hamadryadella</i> (Clem.)	"	"	<u>solitary oak leaf-</u> <u>miner</u>	oak	B
<i>hamameliella</i> (Busck)	"	"	witch hazel leaf- blotch miner	witch hazel	C
<i>macrocarpella</i> (F. and B.)	"	"	oak leafblotch miner	oak	C
<i>ostryarella</i> (Cham.)	"	"	ironwood leafblotch miner	ironwood	C
<i>quercivorella</i> (Cham.)	"	"	oak leafblotch miner	oak	C
<i>ulmella</i> (Cham.)	"	"	elm leafblotch miner	elm	C
<i>Camula</i> <i>pellucida</i> Scud.	Orthoptera	Acrididae	<u>clearwinged grass-</u> <u>hopper</u>	ground plants	F
<i>Campaea</i> <i>perlata</i> Gn.	Lepidoptera	Geometridae	fringed looper	general feeder	C
<i>Camponotus</i> <i>herculeanus</i> (L.)	Hymenoptera	Formicidae	red and black carpenter ant	dry wood	C
<i>noveboracensis</i> (Fitch)	"	"	" "	" "	C
<i>pennsylvanicus</i> (DeGeer)	"	"	<u>black carpenter ant</u>	" "	C
<i>Canarsia</i> <i>ulmiarrosorella</i> (Clem.)	Lepidoptera	Pyralidae	elm leaftier	elm	C
<i>Cantharis</i> <i>bilineatus</i> Say	Coleoptera	Cantharidae	twolined cantharid	predator	D
<i>carolinus</i> F.	"	"	Carolina cantharid	"	D

SCIENTIFIC NAME	ORDER	FAMILY	COMMON NAME	MAIN HOST PLANT(S) OR INSECT TYPE	IMPORTANCE RATING
<i>Caripeta</i>					
<i>angustiorata</i> Wlk.	Lepidoptera	Geometridae	brown pine looper	coniferous	C
<i>divisata</i> Wlk.	"	"	gray spruce looper	"	C
<i>piniata</i> Pack.	"	"	pine looper	pine, spruce	C
<i>Carposina</i>					
<i>comonana</i> Kft.	Lepidoptera	Carposinidae	micro moth	cherry	C
<i>fernaldana</i> Busck	"	"	" "	deciduous fruits	C
<i>Carynota</i>					
<i>stupida</i> (Wlk.)	Homoptera	Membracidae	stupid treehopper	birch	C
<i>Cassida</i>					
<i>rubiginosa</i> Mull.	Coleoptera	Chrysomelidae	green tortoise beetle	thistles	F
<i>Catabena</i>					
<i>lineolata</i> Wlk.	Lepidoptera	Noctuidae	owlet moth	ground plants	F
<i>Catocala</i>					
<i>antinympa</i> (Hbn.)	Lepidoptera	Noctuidae	sweetfern underwing	sweet fern	C
<i>blandula</i> Hlst.	"	"	gray-blue "	hawthorne	C
<i>briseis</i> Edw.	"	"	Briseis underwing	poplar, willow	C
<i>cara</i> Gn.	"	"	darling underwing	willow	C
<i>cerogama</i> Gn.	"	"	yellow-banded under- wing	basswood, poplar	C
<i>concumbens</i> Wlk.	"	"	pink underwing	willow, trembling aspen	C
<i>habilis</i> Grt.	"	"	underwing moth	butternut, ash	C
<i>ilia</i> (Cram.)	"	"	" "	red oak	C
<i>piatrix</i> Grt.	"	"	" "	walnut, ash	C

<i>Catocala</i>					
<i>relicta</i> Wlk.	Lepidoptera	Noctuidae	white underwing	poplar, willow	C
<i>relicta phrynica</i> Hy. Edw.	"	"	"	poplar	
<i>relecta</i> Grt.	"	"	yellow-gray underwing	hickory	C
<i>sordida</i> Grt.	"	"	blueberry underwing	blueberry	C
<i>ultrania</i> (Hbn.)	"	"	plum tree underwing	cherry, plum	C
<i>unijuga</i> Wlk.	"	"	oncemarried underwing	poplar, willow	C
<i>Caulocampus</i>					
<i>acericaulis</i> MacG.	Hymenoptera	Tenthredinidae	<u>maple petiole borer</u>	maple	C
<i>Cecidomyia</i>					
<i>negundinis</i> Gill.	Diptera	Cecidomyiidae	boxelder budgall	Manitoba maple	C
<i>ocellaris</i> (O.S.)	"	"	midge		
<i>piniinopis</i> O.S.	"	"	ocellate gall midge	maple	C
(= <i>banksianae</i> Vock.)	"	"	jack pine midge	jack pine	C
<i>resinicola</i> (O.S.)	"	"	jack pine resin midge	jack pine	C
(= <i>reeksi</i> Vock.)	"	"	jack pine midge	jack pine	C
<i>resinicoloides</i> Will.	"	"			
(= <i>accola</i> Vock.)	"	"			
<i>Celastrina</i>					
<i>argiolus</i> (L.)	Lepidoptera	Lycaenidae	spring azur	deciduous	C
<i>(Celerio)</i> see Hyles					
<i>Cenopsis</i>					
<i>acerivorana</i> MacK.	Lepidoptera	Tortricidae	maple leafroller	maple	C
<i>pettitana</i> (Rob.)	"	"	maple basswood leafroller	basswood, maple	C
<i>Cepegillettea</i>					
<i>betulifoliae</i> Granovsky	Homoptera	Aphididae	birch aphid	white birch	C

SCIENTIFIC NAME	ORDER	FAMILY	COMMON NAME	MAIN HOST PLANT(S) OR INSECT TYPE	IMPORTANCE RATING
<i>Cephalcia</i> <i>fascipennis</i> (Cress.)	Hymenoptera	Pamphiliidae	spruce webspinning sawfly	spruce	C
<i>frontalis</i> Westw.	"	"	pine webspinning sawfly	red pine	C
<i>fulviceps</i> Roh.	"	"	pine webspinning sawfly	red and jack pine	C
<i>marginata</i> Midd.	"	"	red pine webspinning sawfly	red pine	C
<i>Cephaloon</i> <i>lepturoides</i> Newm.	Coleoptera	Cephaloidae	false leptura beetle	decayed coniferous wood	C
<i>Ceramica</i> <i>picta</i> (Harr.)	Lepidoptera	Noctuidae	<u>zebra caterpillar</u>	agricultural pest	F
<i>Ceratonia</i> <i>amyntor</i> (Geyer)	Lepidoptera	Sphingidae	<u>elm sphinx</u>	deciduous	C
<i>catalpae</i> (Bdv.)	"	"	<u>catalpa sphinx</u>	catalpa	C
<i>undulosa</i> (Wlk.)	"	"	waved sphinx	ash	C
<i>Cerura</i> <i>borealis</i> Bdv.	Lepidoptera	Notodontidae	forktailed cater- pillar	deciduous	C
<i>cinerea</i> Wlk.	"	"	forktailed cater- pillar	"	C
<i>modesta</i> Hud.	"	"	forktailed cater- pillar	willow	C
<i>multiscripta</i> Riley	"	"	forktailed cater- pillar	poplar, willow	C
<i>multiscripta canadensis</i> McD.	"	"	forktailed cater- pillar	" "	C

<i>Cerura</i>					
<i>occidentalis</i> Lint.	Lepidoptera	Notodontidae	forktailed caterpillar	willow, poplar	C
<i>scolopendrina</i> Bdv.	"	"	forktailed caterpillar	deciduous	C
<i>Chaitophorus</i>					
<i>populicola</i> (Thos.)	Homoptera	Aphididae	smokywinged poplar aphid	poplar	C
<i>viminalis</i> (Monell)	"	"	willow aphid	willow	C
<i>(Chalcoides) see Crepidodera</i>					
<i>Chalcophora</i>					
<i>fortis</i> Lec.	Coleoptera	Buprestidae	flatheaded pine borer	dead pine	C
<i>liberta</i> Germ.	"	"	" " "	" "	C
<i>virginiensis</i> (Drury)	"	"	virginian buprestid	" "	C
<i>(Chalepus) see Odontota</i>					
<i>Charadra</i>					
<i>deridens</i> Gn.	Lepidoptera	Noctuidae	masked hairy caterpillar	deciduous	C
<i>Chelymorpha</i>					
<i>cassidea</i> (F.)	Coleoptera	Chrysomelidae	<u>argus tortoise beetle</u>	milkweed, wild potato	F
<i>Chilocorus</i>					
<i>stigma</i> (Say)	"	Coccinellidae	<u>twicestabbed lady beetle</u>	predator	D
<i>Chionaspis</i>					
<i>americana</i> Johns.	Homoptera	Diaspididae (Coccidae)	<u>elm scurfy scale</u>	elm	C
<i>corni</i> Cooley	"	Diaspididae (Coccidae)	<u>dogwood scale</u>	dogwood	C

SCIENTIFIC	ORDER	FAMILY	COMMON NAME	MAIN HOST PLANT(S) OR INSECT TYPE	IMPORTANCE RATING
<i>Chionaspis</i>					
<i>  furfura</i> (Fitch)	Homoptera	Diaspididae (Coccidae)	<u>scurfy scale</u>	deciduous	C
<i>  lintneri</i> Comst.	"	Diaspididae (Coccidae)	Lintner's scale	deciduous	C
<i>  pinifoliae</i> (Fitch)	"	Diaspididae (Coccidae)	<u>pine needle scale</u>	pine, spruce	C
<i>Chionodes</i>					
<i>  continella</i> Zell.	Lepidoptera	Gelechiidae	micro moth	white spruce	C
<i>  fuscomaculella</i> Cham.	"	"	" "	oak	C
<i>  obscurusella</i> Cham.	"	"	boxelder leafworm	maple, oak	C
<i>  terminimaculella</i> Kft.	"	"	micro moth	poplar	C
<i>  vernella</i> Murt.	"	"	spring oak leafroller	oak	C
<i>Chlorissa</i>					
<i>  pistasciaria</i> Gn.	"	Geometridae	loopers	deciduous	C
<i>Chlorochlamys</i>					
<i>  chloroleucaria</i> Gn.	Lepidoptera	Geometridae	blackberry looper	blackberry	C
<i>Chlorochroa</i>					
<i>  uhleri</i> Say	Hemiptera	Pentatomidae	stink bug	unknown	C
<i>Chlosyne (= Melitaea)</i>					
<i>  nycteis</i> (Dbldg.)	Lepidoptera	Nymphalidae	silvery checkerspot	poplar	C
<i>Choristoneura</i>					
<i>  conflictana</i> (Wlk.)	Lepidoptera	Tortricidae	<u>large aspen tortrix</u>	poplar	B
<i>  fractivittana</i> Clem.	"	"	leafroller moth	deciduous	C
<i>  fumiferana</i> (Clem.)	"	"	spruce budworm	balsam fir, spruce	A
<i>  obsoletana</i> Wlk.	"	"	leafroller moth	white birch	C



<i>Choristoneura</i>					
<i>pinus pinus</i> Free.	Lepidoptera	Tortricidae	<u>jack pine budworm</u>	jack pine	A
<i>rosaceana</i> (Harr.)	"	"	<u>obliquebanded leaf</u>	deciduous	C
			<u>roller</u>		
<i>zapulata</i> Rob.	"	"	leafroller moth	"	C
<i>Chramesus</i>					
<i>hicoriae</i> Lec.	Coleoptera	Scolytidae	hickory bark beetle	hickory	C
<i>Chrysaspidia</i>					
<i>putnami</i> (Grt.)	Lepidoptera	Noctuidae	owlet moth	grass	C
<i>Chrysaster</i>					
<i>ostensackenella</i> (Fitch)	"	Gracillariidae	ironwood leafblotch miner	ironwood	C
<i>Chrysobothris</i>					
<i>dentipes</i> (Germ).	Coleoptera	Buprestidae	flatheaded wood borer	pine, larch	C
<i>femorata</i> (Oliv.)	"	"	<u>flatheaded appletree</u>	deciduous	C
			<u>borer</u>		
<i>floricola</i> Gory.	"	"	flatheaded wood borer	pine	C
<i>harrisi</i> Hentz.	"	"	" " "	"	C
<i>serabripennis</i> Cast. & Gory	"	"	" " "	pine, hemlock	C
<i>trinervia</i> (Kby.)	"	"	" " "	pine	C
<i>Chrysochus</i>					
<i>auratus</i> (F.)	"	Chrysomelidae	dogbane beetle	dogbane	F
<i>Chrysoclista</i>					
<i>linneella</i> Clerk	Lepidoptera	Cosmopterygidae	linden bark borer	Europ. linden	C
<i>Chrysomela</i>					
<i>crotehi</i> Brown	Coleoptera	Chrysomelidae	<u>aspen leaf beetle</u>	aspen	B
<i>falsa</i> Brown	"	"	willow-and-poplar leaf beetle	poplar, willow	C
<i>knabi</i> Brown	"	"	spotted willow leaf beetle	willow, poplar	C

SCIENTIFIC NAME	ORDER	FAMILY	COMMON NAME	MAIN HOST PLANT(S) OR INSECT TYPE	IMPORTANCE RATING
<i>Chrysomela</i> <i>laurentia</i> Brown	Coleoptera	Chrysomelidae	willow-and-poplar leaf beetle	poplar, willow	C
<i>lineatopunctata</i> Forst.	"	"	willow-and-poplar leaf beetle	poplar	C
<i>mainensis mainensis</i> Bech. <i>scripta</i> F.	"	"	alder leaf beetle	alder	C
	"	"	<u>cottonwood leaf</u> <u>beetle</u>	poplar, willow	C
<i>walshi</i> Brown	"	"	balsam poplar leaf beetle	poplar	C
<i>Chrysopa</i> <i>carnea</i> Steph.	Neuroptera	Chrysopidae	common green lacewing	predator	D
<i>(Chrysopelia)</i> see <i>Stilbosis</i>					
<i>Chrysops</i> <i>carbonarius</i> Wlk.	Diptera	Tabanidae	deer fly	biting flies	F
<i>Cicindela</i> <i>longilabris</i> Say	Coleoptera	Cicindelidae	tiger beetle	predator	D
<i>Cimberis</i> <i>elongatus</i> (Lec.)	"	Curculionidae	pine weevil	pine	C
<i>Cimbex</i> <i>americana</i> Leach	Hymenoptera	Cimbicidae	<u>elm sawfly</u>	deciduous	C
<i>Cinara</i> <i>abieticola</i> (Cholod.)	Homoptera	Aphididae	balsam fir aphid	balsam fir	C
<i>banksiana</i> P. & T.	"	"	jack pine aphid	jack pine	C
<i>braggi</i> (Gillette)	"	"	spruce aphid	spruce	C
<i>coloradensis</i> Gill.	"	"	" "	white spruce	C

<i>Cinara</i>					
<i>curvipes</i> (Patch)	Homoptera	Aphididae	balsam fir aphid	balsam fir	C
<i>formacula</i> Hottes	"	"	<u>green spruce aphid</u>	spruce	C
<i>gracilis</i> (Wilson) (= <i>canatra</i> )	"	"	jack pine aphid	jack pine	C
<i>harmonia</i> (Hottes)	"	"	red pine aphid	red pine	C
<i>hottesi</i> (G. & P.)	"	"	spruce aphid	spruce	C
<i>laricis</i> (Htg.)	"	"	<u>larch aphid</u>	larch	C
<i>laricifex</i> (Fitch)	"	"	black larch aphid	"	C
<i>ontarioensis</i> Brad.	"	"	jack pine needle aphid	jack pine	C
<i>palmerae</i> (Gillette)	"	"	spruce aphid	spruce	C
<i>pinea</i> (Mordwilko)	"	"	pine aphid	pine	C
<i>pinivora</i> Wils.	"	"	" "	"	C
<i>pergandei</i> (Wilson)	"	"	jack pine aphid	jack pine	C
<i>strobi</i> (Fitch)	"	"	<u>white pine aphid</u>	white pine	C
<i>Cincticornia</i>					
<i>pilulae</i> (Beut.)	Diptera	Cecidomyiidae	oak pillgall midge	oak	C
<i>Cingilia</i>					
<i>catenaria</i> Dru.	Lepidoptera	Geometridae	<u>chainspotted geometer</u>	coniferous, ground plants	C
<i>catenaria rubiferaria</i> Swett.	"	"	chainspotted geometer	coniferous, ground plants	C
<i>Cisseps</i>					
<i>fulvicollia</i> Hbn.	"	Amatidae	yellow-collared scape-moth	unknown	C
<i>Cladara</i>					
<i>atroliturata</i> Wlk.	"	Geometridae	looper	deciduous	C
<i>Clastoptera</i>					
<i>obtusa</i> (Say)	Homoptera	Cercopidae	<u>alder spittlebug</u>	alder	C
<i>proteus</i> Fitch	"	"	<u>dogwood spittlebug</u>	dogwood	C

SCIENTIFIC NAME	ORDER	FAMILY	COMMON NAME	MAIN HOST PLANT(S) OR INSECT TYPE	IMPORTANCE RATING
<i>Clemensia</i> <i>albata</i> Pack.	Lepidoptera	Arctiidae	speckled gray footman	coniferous	C
<i>Clepsis</i> <i>melaleucana</i> Wlk.	"	Tortricidae	leafroller	coniferous	C
<i>persicana</i> Fitch	"	"	whitetrangle moth	"	C
<i>Coccinella</i> <i>hieroglyphica kirbi</i> Cr.	Coleoptera	Coccinellidae	lady beetle	predator	D
<i>monticola</i> Muls.	"	"	" "	"	D
<i>novemnotata</i> Hbst.	"	"	ninespotted lady beetle	"	D
<i>transversoguttata richardsoni</i> Brown	"	"	<u>transverse lady</u> <u>beetle</u>	"	D
<i>trifasciata perplexa</i> Muls.	"	"	lady beetle	"	D
<i>trifasciata trifasciata</i> Linn.	"	"	threebanded lady beetle	"	D
<i>undecimpunctata</i> L.	"	"	elevenspotted lady beetle	"	D
<i>Coccobaphes</i> <i>sanguinareus</i> Uhl.	Hemiptera	Miridae	plant bug	unknown	C
<i>Coleomegilla</i> <i>maculata lengi</i> Timb.	Coleoptera	Coccinellidae	lady beetle	predator	D
<i>Coleophora</i> <i>atromarginata</i> Braun	Lepidoptera	Coleophoridae	oak casebearer	oak	C
<i>comptoniella</i> (McD.) (= <i>betulivora</i> McD.)	"	"	lesser birch case- bearer	birch	C
<i>laricella</i> (Hbn.)	"	"	<u>larch casebearer</u>	larch	B
<i>laticornella</i> Clem. (= <i>caryaefoliella</i> Clem.)	"	"	<u>pecan cigar case-</u> <u>bearer</u>	hickory	C

<i>Coleophora</i>					
<i>limosipenella</i> Dup. (= <i>ulmifoliella</i> McD.)	Lepidoptera	Coleophoridae	<u>elm casebearer</u>	elm	C
<i>malivorella</i> Riley (= <i>cinerella</i> Chamb.)	"	"	pistol casebearer	deciduous	C
<i>occidentis</i> Zell.	"	"	fruit tree case- bearer	fruit trees	C
<i>ostrayae</i> Clem.	"	"	ironwood case- bearer	ironwood	C
<i>pruniella</i> Clem. (= <i>innotabilis</i> Braun)	"	"	cherry casebearer	deciduous	C
<i>querciella</i> Clem.	"	"	oak casebearer	oak	C
<i>serratella</i> (Linn.) (= <i>fuscedinella</i> Zell.)	"	"	birch casebearer	birch	E
<i>tiliaefoliella</i> Clem.	"	"	basswood casebearer	basswood	C
<i>Colias</i>					
<i>eurytheme</i> Bdv.	Lepidoptera	Pieridae	<u>alfalfa caterpillar</u>	legumes	F
<i>philodice</i> Codt.	"	"	<u>clouded sulphur</u>	"	F
<i>Colocasia</i>					
<i>flavicornis</i> (Sm.)	"	Noctuidae	owlet moth	deciduous	C
<i>propinquinella</i> (Grt.)	"	"	" "	"	C
<i>Colopha</i>					
<i>ulmicola</i> (Fitch)	Homoptera	Aphididae	<u>elm cockscomb gall</u> <u>aphid</u>	elm	C
<i>Compsolechia</i>					
<i>niveopulvella</i> Chamb.	Lepidoptera	Gelechiidae	paleheaded aspen leafroller	poplar	C
<i>Conophthorus</i>					
<i>banksianae</i> McPherson	Coleoptera	Scolytidae	<u>jack pine tip beetle</u>	jack pine	C
<i>coniperda</i> (Sz.)	"	"	<u>white pine cone beetle</u>	white pine	C
<i>resinosae</i> Hopk.	"	"	<u>red pine cone beetle</u>	red pine	C

SCIENTIFIC NAME	ORDER	FAMILY	COMMON NAME	MAIN HOST PLANT(S) OR INSECT TYPE	IMPORTANCE RATING
<i>Conotrachelus</i> <i>juglandis</i> LeC. <i>nenuphar</i> (Hbst.)	Coleoptera "	Curculionidae "	<u>butternut curculio</u> <u>plum curculio</u>	butternut fruit trees	C C
<i>Contarinia</i> <i>baeri</i> (Prell)	Diptera	Cecidomyiidae	European pine needle midge	Scots and red pines	B
<i>canadensis</i> Felt	"	"	ash midribgall midge	ash	C
<i>negundifolia</i> Felt	"	"	boxelder leafgall midge	Manitoba maple	C
<i>virginianiae</i> Felt	"	"	chokecherry midge	chokecherry	C
<i>Coptodisca</i> <i>splendoriferella</i> (Clem.)	Lepidoptera	Heliozelidae	<u>resplendent shield</u> <u>bearer</u>	apple	C
<i>Corthylus</i> <i>punctatissimus</i> Zimm.	Coleoptera	Scolytidae	pitted ambrosia beetle	maple	B
<i>Corythucha</i> <i>arcuata</i> (Say)	Hemiptera	Tingidae	<u>oak lace bug</u>	oak	B
<i>associata</i> O. & D.	"	"	<u>birch lace bug</u>	birch	B
<i>ciliata</i> O. & D.	"	"	<u>sycamore lace bug</u>	sycamore	C
<i>cydoniae</i> (Fitch)	"	"	<u>hawthorn lace bug</u>	hawthorn	C
<i>elegans</i> Drake	"	"	<u>willow lace bug</u>	willow	B
<i>heidemanni</i> Drake	"	"	alder lace bug	alder	C
<i>juglandis</i> Fitch	"	"	walnut lace bug	deciduous	B
<i>mollicula</i> O. & D.	"	"	willow lace bug	willow	C
<i>pallipes</i> Parsh.	"	"	birch lace bug	deciduous	C
<i>pergandei</i> Heid.	"	"	alder lace bug	"	C
<i>ulmi</i> O. & D.	"	"	<u>elm lace bug</u>	elm	B

<i>Cosmia calami</i> (Harv.)	Lepidoptera	Noctuidae	owlet moth	oak	C
<i>Cosmopepla bimaculata</i> Thomas	Hemiptera	Pentatomidae	twospotted stink bug	predator	D
<i>(Cosymbia)</i> see <i>Cyclophora</i>					
<i>Cotalpa lanigera</i> (Linn.)	Coleoptera	Scarabaeidae	goldsmith beetle	poplar	C
<i>Crambidia casta</i> Pack.	Lepidoptera	Arctiidae	gray footman	unknown	C
<i>pallida</i> Pack.	"	"	pale footman	"	C
<i>Crambus agitatellus</i> Clem.	Lepidoptera	Pyralidae	webworm	grasses	F
<i>girardellus</i> Clem.	"	"	"	"	F
<i>hamellus</i> Thunb.	"	"	"	"	F
<i>hortellus topiarius</i> Zell.	"	"	"	"	F
<i>latiradiellus</i> Wlk.	"	"	"	"	F
<i>perlellus innotatellus</i> Wlk.	"	"	"	"	F
<i>muricolellus</i> Zell.	"	"	"	"	F
<i>vulgivagellus</i> Clem.	"	"	<u>vagabond crambus</u>	"	F
<i>Crepidodera nana</i> (Say)	Coleoptera	Chrysomelidae	aspen flea beetle	aspen	C
<i>Cressonia juglandis</i> J.E. Smith	Lepidoptera	Sphingidae	<u>walnut sphinx</u>	walnut	C
<i>Crocigrapta normani</i> (Grt.)	Lepidoptera	Noctuidae	climbing cherry cutworm	deciduous	C

SCIENTIFIC NAME	ORDER	FAMILY	COMMON NAME	MAIN HOST PLANT(S) OR INSECT TYPE	IMPORTANCE RATING
<i>Croesia</i> <i>curvalana</i> Kft. <i>semipurpurana</i> (Kft.)	Lepidoptera "	Tortricidae "	blueberry leafworm oak leaf shredder	blueberry oak	C A
<i>Croesus</i> <i>castaneae</i> Roh. <i>latitarsus</i> Nort.	Hymenoptera "	Tenthredinidae "	chestnut sawfly <u> dusky birch sawfly </u>	chestnut birch	C C
<i>Crymodes</i> <i>devastator</i> (Brace)	Lepidoptera	Noctuidae	<u>glassy cutworm</u>	sod	F
<i>Cryphia</i> <i>pervertens</i> B. & McD.	Lepidoptera	Noctuidae	owlet moth	elm, oak	C
<i>Cryptocala</i> <i>acadiensis</i> (Beth.)	Lepidoptera	Noctuidae	catocaline dart	unknown	C
<i>Cryptocephalus</i> <i>notatus</i> F. <i>quadruplex</i> Newn.	Coleoptera "	Chrysomelidae "	leaf beetle " "	general feeder " "	C C
<i>Cryptococcus</i> <i>fagisuga</i> Lindinger	Homoptera	Coccidae	<u>beech scale</u>	beech	B
<i>Cryptorhynchus</i> (= <i>Sternochetus</i> ) <i>lapathi</i> (Linn.)	Coleoptera	Curculionidae	<u>poplar-and-willow</u> <u>borer</u>	poplar, willow	B
<i>Crypturgus</i> <i>borealis</i> Sw. <i>pusillus</i> (Gyll.) (= <i>atomus</i> Lec.)	Coleoptera "	Scolytidae "	bark beetle " "	coniferous "	C C



<i>Ctenicera</i>					
<i>appropinquans</i> Rand	Coleoptera	Elateridae	click beetle	soil insects	F
<i>arata</i> Lec.	"	"	" "	" "	F
<i>cruciata pulchra</i> Lec.	"	"	" "	" "	F
<i>hieroglyphica</i> (Say)	"	"	" "	" "	F
<i>kendalli</i> Kby.	"	"	" "	" "	F
<i>mediana</i> Germ.	"	"	" "	" "	F
<i>nigricollis</i> Bland.	"	"	" "	" "	F
<i>nitidula</i> Lec.	"	"	" "	" "	F
<i>ochreipennis</i> (Lec.)	"	"	" "	" "	F
<i>propola propola</i> (Lec.)	"	"	twospotted click beetle	" "	F
<i>resplendens resplendens</i> Esch.	"	"	green click beetle	" "	F
<i>spinosa</i> Lec.	"	"	click beetle	" "	F
<i>splendens</i> Ziegl.	"	"	" "	" "	F
<i>triundulata</i> (Rand.)	"	"	threespotted click beetle	" "	F
<i>Ctenucha</i>					
<i>virginica</i> (Charp.)	Lepidoptera	Amatidae	dusky bluebodied moth	grasses	F
<i>Cucullia</i>					
<i>convexipennis</i> G. & R.	Lepidoptera	Noctuidae	aster cutworm	aster, goldenrod	F
<i>intermedia</i> Speyer	"	"	goldenrod cutworm	flowers	F
<i>postera</i> Gn.	"	"	aster cutworm	wild aster	
<i>Culex</i>					
<i>pipiens</i> L.	Diptera	Cylicidae	<u>northern house</u> <u>mosquito</u>	biting flies	F
<i>Culicoides</i> spp.					
	Diptera	Chironomidae	punkie	biting flies	F
<i>Cycloneda</i>					
<i>munda</i> Say	Coleoptera	Coccinellidae	lady beetle	predator	D
<i>Cyclophora</i>					
<i>pendulinaria</i> Gn.	Lepidoptera	Geometridae	looper	deciduous	C

SCIENTIFIC NAME	ORDER	FAMILY	COMMON NAME	MAIN HOST PLANT(S) OR INSECT TYPE	IMPORTANCE RATING
<i>Cylistix cylindrica</i> Payk.	Coleoptera	Histeridae	hister beetle	predator	D
<i>Cynips centricola</i> (O.S.)	Hymenoptera	Cynipidae	spotted oak apple	oak	C
<i>Cynthia cardui</i> (Linn.)	Lepidoptera	Nymphalidae	<u>painted lady</u>	thistle	F
<i>virginiensis</i> (Drury)	"	"	<u>painted beauty</u>	flowers	F
<i>Cyphon variabilis</i> (Thunb.)	Coleoptera	Helodidae	false flower beetle	general feeder	C
<i>Cyrtolobus querci</i> Fitch	Homoptera	Membracidae	tree hopper	unknown	C
<i>Cytilus alternatus</i> Say	Coleoptera	Byrrhidae	pill beetle	seedling roots	C
<i>sericeus</i> Forst.	"	"	" "	unknown	C
<i>Dalbominus fuscipennis</i> (Zett.)	Hymenoptera	Eulophidae	chalcid parasite	parasite	D
<i>Danaus plexippus</i> (Linn.)	Lepidoptera	Danaidae	<u>monarch butterfly</u>	milkweed	F
<i>Darapsa myron</i> (Cram.)	Lepidoptera	Spingidae	<u>Virginiacreeper</u>	deciduous	C
<i>pholus</i> Cram.	"	"	<u>sphinx</u> azalea sphinx	shrubs	C
<i>Dasineura balsamicola</i> (Lintn.)	Diptera	Cecidomyiidae	false balsam gall midge	balsam fir	C

<i>Dasineura</i>					
<i>canadensis</i> Felt	Diptera	Cecidomyiidae	spruce cone gall midge	spruce cones	C
<i>communis</i> Felt	"	"	gouty vein midge	maple	C
<i>gleditschiae</i> O.S.	"	"	honey locust podgall midge	locust	B
<i>rachiphaga</i> Tripp	"	"	spruce cone axis midge	spruce cones	C
<i>serrulatae</i> O.S.	"	"	alder budgall midge	alder	C
<i>Dasychira</i>					
<i>dorsipennata</i> (B. and McD).	Lepidoptera	Lymantriidae	hardwood tussock moth	deciduous	C
<i>pinicola</i> (Dyar) (= <i>pini</i> Dyar)	"	"	<u>pine tussock moth</u>	pine	E
<i>plagiata</i> (Wlk.)	"	"	northern pine tussock moth	pine	C
<i>vagans</i> (B. and McD.)	"	"	tussock moth	deciduous	C
<i>Dasylophia</i>					
<i>thyatiroides</i> Wlk.	Lepidoptera	Notodontidae	beech caterpillar	beech	C
<i>Datana</i>					
<i>angusii</i> G. & R.	Lepidoptera	Notodontidae	striped caterpillar	hickory, butternut	C
<i>contracta</i> Wlk.	"	"	oak caterpillar	oak	C
<i>drexeli</i> Hy. Edw.	"	"	witch hazel cater- pillar	witch hazel	C
<i>integerrima</i> G. & R.	"	"	<u>walnut caterpillar</u>	walnut, hickory	B
<i>ministra</i> (Dru.)	"	"	<u>yellownecked cater- pillar</u>	deciduous	C
<i>perspicua</i> G. & R.	"	"	sumac caterpillar	sumac	C
<i>Deilinia</i>					
<i>erythemaria erythemaria</i> Gn.	Lepidoptera	Geometridae	loopers	willow	C
<i>variolaria</i> Gn.	"	"	"	deciduous	C

SCIENTIFIC NAME	ORDER	FAMILY	COMMON NAME	MAIN HOST PLANT(S) OR INSECT TYPE	IMPORTANCE RATING
<i>Delphastus pusillus</i> Lec.	Coleoptera	Coccinellidae	lady beetle	predator	D
<i>Dendroctonus murrayanae</i> Hopk.	Coleoptera	Scolytidae	<u>lodgepole pine beetle</u>	jack pine, red pine	C
<i>rufipennis</i> (Kirby) (= <i>obesus</i> Mann.)	"	"	<u>spruce beetle</u>	white spruce	C
<i>simplex</i> Lec.	"	"	<u>eastern larch beetle</u>	tamarack	C
<i>valens</i> Lec.	"	"	<u>red turpentine beetle</u>	coniferous	C
<i>Depressaria</i> see also <i>Nites</i>					
<i>pastinacella</i> (Dup.) (= <i>heracliana</i> Linn.)	Lepidoptera	Oecopharidae	<u>parsnip webworm</u>	umbelliferous	F
<i>Dermestes lardarius</i> Linn.	Coleoptera	Dermestidae	<u>larder beetle</u>	household pest	G
<i>Desmia funeralis</i> (Hbn.)	Lepidoptera	Pyralidae	<u>grape leaffolder</u>	vines	F
<i>Deuteronomos magnarius</i> Gn.	Lepidoptera	Geometridae	maple spanworm	deciduous	C
<i>Diachus catarius</i> Suffr.	Coleoptera	Chrysomelidae	leaf beetle	willow	C
<i>Diacrisia virginica</i> (Fabr.)	Lepidoptera	Arctiidae	<u>yellow woollybear</u>	deciduous	C
<i>Diapheromera femorata</i> (Say)	Orthoptera	Phasmidae	<u>walkingstick</u>	deciduous	B

<i>Diarsia</i> <i>jucunda</i> Wlk.	Lepidoptera	Noctuidae	smaller pinkish dart	unknown	C
<i>Dicera</i> <i>divaricata</i> Say	Coleoptera	Buprestidae	flatheaded hardwood borer	dead trees	C
<i>tenebrica</i> Kby.	"	"	flatheaded poplar borer	" "	C
<i>tenebrosa</i> Kby.	"	"	flatheaded conifer borer	" "	C
<i>Dichelonyx</i> <i>albicollis</i> (Burm.)	Coleoptera	Scarabaeidae	leaf chafer	deciduous	C
<i>backi</i> (Kby.)	"	"	<u>green rose chafer</u>	"	C
<i>elongatula</i> (Schon.)	"	"	leaf chafer	"	C
<i>linearis</i> (Gyll.)	"	"	" "	"	C
<i>subvittata</i> Lec.	"	"	" "	"	C
<i>Dichomeris</i> <i>ligulella</i> Hbn.	Lepidoptera	Gelechiidae	<u>Palmerworm</u>	deciduous	C
<i>marginella</i> (Fabr.)	"	"	<u>juniper webworm</u>	juniper	C
<i>Dicrodiplosis</i> <i>populi</i> Felt	Diptera	Cecidomyiidae	poplar leafgall midge	poplar	C
<i>Dictyopterus</i> <i>aurora</i> Hbst.	Coleoptera	Lycidae	netwinged beetle	decaying wood	C
<i>Dimorphopteryx</i> <i>melanognathus</i> Roh.	Hymenoptera	Tenthredinidae	fringed birch sawfly	birch, alder	B
<i>Dioryctria</i> <i>abietivorella</i> (Grt.)	Lepidoptera	Pyralidae	fir coneworm	coniferous	C
<i>disclusa</i> Heinr.	"	"	webbing coneworm	pine cone	C
<i>reniculelloides</i> Mut. & Mun.	"	"	<u>spruce coneworm</u>	spruce, balsam fir	C
<i>zimmermani</i> (Grt.)	"	"	<u>Zimmerman pine moth</u>	pine	C

SCIENTIFIC NAME	ORDER	FAMILY	COMMON NAME	MAIN HOST PLANT(S) OR INSECT TYPE	IMPORTANCE RATING
<i>Diplolepis rosae</i> (Linn.)	Hymenoptera	Cynipidae	<u>mossyrose gall wasp</u>	rose	C
<i>Diprion similis</i> (Htg.)	Hymenoptera	Diprionidae	<u>introduced pine sawfly</u>	pine	C
<i>Disonycha alternata</i> Ill.	Coleoptera	Chrysomelidae	striped willow leaf beetle	willow	C
<i>Drepana arcuata</i> Wlk.	Lepidoptera	Drepanidae	masked birch cater- pillar	birch, alder	C
<i>bilineata</i> Pack.	"	"	warty birch cater- pillar	birch	C
<i>bilineata levis</i> Hud.	"	"	warty birch cater- pillar	"	C
<i>Dryocampa rubicunda alba</i> Grt.	Lepidoptera	Citheroniidae	greenstriped maple- worm	maple	A
<i>rubicunda rubicunda</i> (Fabr.)	"	"	<u>greenstriped maple- worm</u>	"	A
<i>Dryocoetes affaber</i> (Mann.)	Coleoptera	Scolytidae	bark beetle	spruce, pine	C
<i>autographus</i> (Ratz.)	"	"	bark beetle	coniferous	C
<i>betulae</i> (Hopk.)	"	"	<u>birch bark beetle</u>	white birch	C
<i>Dryocosmus deciduus</i> (Beut.)	Hymenoptera	Cynipidae	oak gall wasp	oak	C
<i>palustris</i> (Ashm.)	"	"	" " "	"	C

<i>Duvita vittella</i> Busck.	Lepidoptera	Gelechiidae	micro moth	pine	C
<i>Dyspteris abortivaria</i> H.-S.	"	Geometridae	looper	grape	C
<i>Dysstroma citrata</i> Linn.	Lepidoptera	Geometridae	looper	general feeder	C
<i>truncata</i> Hufn.	"	"	"	" "	C
<i>Eacles imperialis pini</i> Mich.	Lepidoptera	Citheroniidae	pine imperial moth	pine	C
<i>Earophila vasiliata</i> Gn.	Lepidoptera	Geometridae	looper	unknown	C
<i>Ecdytolopha insiticiiana</i> Zell.	Lepidoptera	Olethreutidae	<u>locust twig borer</u>	locust	C
<i>Epantheria scribonia</i> Stol.	Lepidoptera	Arctiidae	great leopard moth	unknown	C
<i>Ectoedemia argyropeza downsesi</i> Wilk. and Scoble	"	Nepticulidae	aspen petiole miner	aspen	C
<i>canutus</i> Wilk. and Scoble	"	"	balsam poplar petiole miner	balsam poplar	C
<i>lindquisti</i> (Free.)	"	"	small birch leafminer	birch	C
<i>populella</i> Busck.	"	"	poplar petiolegall moth	poplar	C
<i>Ectropis crepuscularia</i> (Schiff.)	Lepidoptera	Geometridae	saddleback looper	general feeder	C
<i>crepuscularia abraxaria</i> Wlk.	"	"	" "	" "	C
<i>Eitelius gregarius</i> (Marl.)	Hymenoptera	Tenthredinidae	willow skeletonizing sawfly	willow	C

SCIENTIFIC NAME	ORDER	FAMILY	COMMON NAME	MAIN HOST PLANT(S) OR INSECT TYPE	IMPORTANCE RATING
<i>Elaphidionoides parallelus</i> (Newm.) <i>villosus</i> (F.)	Coleoptera "	Cerambycidae "	<u>hickory twig pruner</u> <u>twig pruner</u>	oak, hickory red oak	C C
<i>Elaphria festivoidea</i> (Gn.) <i>versicolor</i> (Grt.)	Lepidoptera "	Noctuidae "	owlet moth fir harlequin	general feeder " "	C C
<i>Elasmotethus cruciatus</i> Say	Hemiptera	Pentatomidae	redcrossed stink bug	unknown	C
<i>Ellida caniplaga</i> Wlk.	Lepidoptera	Notodontidae	basswood caterpillar	basswood	C
<i>Ematurga amitaria</i> Gn.	Lepidoptera	Geometridae	cranberry spanworm	deciduous	C
<i>Empoasca fabae</i> (Harr.)	Homoptera	Cicadellidae	<u>potato leafhopper</u>	deciduous	C
<i>Empria multicolor</i> (Nort.)	Hymenoptera	Tenthredinidae	sawfly	white birch	C
<i>Enargia decolor</i> (Wlk.) <i>infumata</i> (Grt.)	Lepidoptera "	Noctuidae "	aspen twoleaf tier owlet moth	poplar birch	B C
<i>Enchenopa binotata</i> (Say)	Homoptera	Membracidae	<u>twomarked treehopper</u>	deciduous	C
<i>Endothenia albolineana</i> (Kft.)	Lepidoptera	Olethreutidae	<u>spruce needleminer</u>	spruce	C



<i>Ennomos</i> <i>subsignarius</i> (Hbn.)	Lepidoptera	Geometridae	<u>elm spanworm</u>	elm	B
<i>Enodia</i> <i>portlandia borealis</i> Clk.	Lepidoptera	Satyridae	pearly eye	grass	F
<i>Epargyreus</i> <i>clarus</i> (Cram.)	Lepidoptera	Hesperiidae	silverspotted skipper	locust	C
<i>Epehstia</i> <i>elutella</i> (Hbn.)	Lepidoptera	Pyralidae	<u>tobacco moth</u>	household pest	C
<i>Epiblema</i> <i>abbreviatana</i> Wlsh. m.	Lepidoptera	Olethreutidae	micro moth	unknown	C
<i>Epicauta</i> <i>fabricii</i> (Lec.)	Coleoptera	Meloidae	<u>ashgray blister</u> <u>beetle</u>	unknown	C
<i>murina</i> Lec.	"	"	dark blister beetle	deciduous	C
<i>(Epicnaptera)</i> see <i>Phyllodesma</i>					
<i>Epiglaea</i> <i>apiata</i> (Grt.)	Lepidoptera	Noctuidae	owlet moth	cranberry, blueberry	C
<i>Epinotia</i> <i>aceriella</i> (Clem.)	Lepidoptera	Olethreutidae	<u>maple trumpet</u> <u>skeletonizer</u>	maple	C
<i>albangulana</i> Wlsh. m.	"	"	alder leafroller	alder	C
<i>corylana</i> McD.	"	"	alder catkin moth	alder	C
<i>crenana</i> Hbn.	"	"	willow leafroller	willow	C
<i>criddleana</i> Kft.	"	"	aspen leafroller	poplar	C
<i>cruciana</i> Linn.	"	"	willow leaftier	willow	C
<i>lindana</i> Fern.	"	"	dogwood leafroller	dogwood	C

SCIENTIFIC NAME	ORDER	FAMILY	COMMON NAME	MAIN HOST PLANT(S) OR INSECT TYPE	IMPORTANCE RATING
<i>Epinotia</i>					
<i>medioplagata</i> Wlshm.	Lepidoptera	Olethreutidae	willow leafroller	willow	
<i>momonana</i> Kft.	"	"	alder budminer	alder	C
<i>nanana</i> Treit.	"	"	European spruce needleminer	spruce	C
<i>nigralbana</i> Wlshm.	"	"	micro moth	alder	C
<i>nisella</i> Clerck.	"	"	yellowheaded aspen leaftier	aspen	C
<i>normanana</i> Kft.	"	"	spruce needleminer	spruce	C
<i>rectiplicana</i> Wlshm.	"	"	micro moth	deciduous	C
<i>septemberana</i> Kft.	"	"	" "	Labrador tea	C
<i>solandriana</i> Linn.	"	"	birch-aspen leaf- roller	birch, poplar	B
<i>solicitana</i> Wlk.	"	"	birch shootworm	birch	C
<i>timidella</i> Clem.	"	"	oak trumpet	oak	C
<i>transmissana</i> Wlk.	"	"	skeletonizer		
			birch catkin moth	birch	C
<i>Epirrita</i>					
<i>autumnata henshawi</i> Swett.	"	"	November moth	larch	C
<i>Episimus</i>					
<i>argutanus</i> Clem.	Lepidoptera	Olethreutidae	sumac leafroller	sumac	C
<i>Epizeuxis</i>					
<i>aemula</i> Hbn.	Lepidoptera	Noctuidae	owlet moth	spruce	C
<i>americanalis</i> Gn.	"	"	" "	"	C
<i>lubricalis</i> Geyer	"	"	" "	unknown	C
<i>Erannis</i>					
<i>tiliaria</i> (Harr.)	Lepidoptera	Geometridae	<u>linden looper</u>	deciduous	B

<i>Eriocampa juglandis</i> (Fitch)	Hymenoptera	Tenthredinidae	woolly butternut sawfly	butternut, walnut	C
<i>ovata</i> (Linn.)	"	"	woolly alder sawfly	alder	C
<i>Eriophyes (abnormis</i> Garm.) see <i>Phytocoptella betulae</i> Steb.	Acarina	Eriophyidae	birch "witches broom" mite	birch	C
<i>fraxiniflora</i> Felt	"	"	ash flowergall mite	ash	C
<i>negundi</i> Hodgk.	"	"	Manitoba maple gall mite	Manitoba maple	C
<i>populi</i> Nal.	"	"	poplar gall mite	poplar	C
<i>semen</i> Walsh.	"	"	willow leafgall mite	willow	C
<i>Eriosoma americanum</i> (Riley)	Homoptera	Aphididae	<u>woolly elm aphid</u>	elm	C
<i>lanigerum</i> (Hausm.)	"	"	<u>woolly apple aphid</u>	elm, apple	C
<i>Erynnis icelus</i> (Scud. & Burg.)	Lepidoptera	Hesperiidae	dreamy dusky wing	poplar, willow	C
<i>juvenalis</i> Fabr.	"	"	Juvenal's dusky wing	oak	C
<i>Estigmene acrea</i> (Dru.)	Lepidoptera	Arctiidae	<u>saltmarsh caterpillar</u>	grasses	F
<i>prima</i> Slosson	"	"	woolly bear	"	F
<i>Euceraaphis betulae</i> (Koch.)	Homoptera	Aphididae	birch aphid	birch	C
<i>Euchaetias egle</i> (Dru.)	Lepidoptera	Arctiidae	milkweed tussock	milkweed	F

SCIENTIFIC NAME	ORDER	FAMILY	COMMON NAME	MAIN HOST PLANT(S) OR INSECT TYPE	IMPORTANCE RATING
<i>Euchlaena</i>					
<i>effecta</i> Wlk.	Lepidoptera	Geometridae	loopers	deciduous	C
<i>irrararia</i> B. & McD.	"	"	"	aspen	C
<i>johnsonaria</i> Fitch	"	"	"	deciduous	C
<i>marginata</i> Minot	"	"	"	"	C
<i>tigrinaria</i> Gn.	"	"	"	"	C
<i>vinulentaria</i> G. & R.	"	"	"	jack pine	C
<i>Eucirrhoedia</i>					
<i>pampina</i> (Gn.)	Lepidoptera	Noctuidae	owlet moth	deciduous	C
<i>Euclea</i>					
<i>delphinii</i> Bdv.	Lepidoptera	Limacodidae	spiny slug caterpillar	deciduous	C
<i>Euclidina</i>					
<i>cuspidata</i> (Hbn.)	Lepidoptera	Noctuidae	owlet moth	clover	F
<i>Eucordylea</i>					
<i>atrapietella</i> Dietz.	Lepidoptera	Gelechiidae	spruce micro moth	coniferous	C
<i>blastovora</i> McLeod	"	"	" " "	spruce	C
<i>canusella</i> Free.	"	"	banded jack pine needleminer	jack pine	C
<i>ducharmei</i> Free.	"	"	spruce needleminer	spruce	C
<i>resinosae</i> Free.	"	"	red pine needleminer	red pine	C
<i>Eucosma</i>					
<i>gloriola</i> Heinr.	Lepidoptera	Olethreutidae	<u>eastern pine shoot</u> <u>borer</u>	pine	B
<i>monitorana</i> Heinr.	"	"	red pine coneworm	red pine	C
<i>tocullionana</i> Heinr.	"	"	white pine coneworm	pine	C

<i>Eudeilinia herminiata</i> Gn.	Lepidoptera	Drepanidae	dogwood caterpillar	dogwood	C
<i>Eueretagrotis attenta</i> (Grt.)	Lepidoptera	Noctuidae	cutworm	unknown	C
<i>perattenta</i> (Grt.)	"	"	"	"	C
<i>Eufidonia discospilata</i> Wlk.	Lepidoptera	Geometridae	looper	coniferous	C
<i>notataria</i> Wlk.	"	"	conifer looper	"	C
<i>Eugonobapta nivosaria</i> Gn.	Lepidoptera	Geometridae	looper	maple	C
<i>Euherrichia monetifera</i> (Gn.)	Lepidoptera	Noctuidae	owlet moth	fern	F
<i>Eulythis diversilineata</i> Hbn.	"	Geometridae	<u>grapevine looper</u>	grapevine	F
<i>Eumorpha achemon</i> (Dru.)	"	Sphingidae	<u>achemon sphinx</u>	virginia creeper	F
<i>Eupareophora parca</i> (Cress.) (= <i>minuta</i> MacG.)	Hymenoptera	Tenthredinidae	spiny ash sawfly	ash	C
<i>Euparthenos nubilis</i> (Hbn.)	Lepidoptera	Geometridae	locust caterpillar	locust	C
<i>Euphoria fulgida</i> F.	Coleoptera	Scarabaeidae	scarab beetle	decayed wood	F
<i>inda</i> L.	"	"	bumble flower beetle	" "	F

SCIENTIFIC NAME	ORDER	FAMILY	COMMON NAME	MAIN HOST PLANT(S) OR INSECT TYPE	IMPORTANCE RATING
<i>Eupithecia</i>					
<i>albicapitata</i> Pack.	Lepidoptera	Geometridae	spruce cone geometer	spruce, balsam fir	C
<i>annulata</i> Hlst.	"	"	conifer looper	coniferous	C
<i>arceuthata</i> Frey.	"	"	juniper looper	juniper	C
<i>castigata</i> Hbn.	"	"	looper	coniferous	C
<i>coagulata</i> Gn.	"	"	"	ground plants	F
<i>filmata</i> Pears.	"	"	early brown looper	coniferous	C
<i>fletcherata</i> Tayl.	"	"	looper	"	C
<i>gelidata</i> Moesch.	"	"	"	birch	C
<i>gibsonata</i> Tayl.	"	"	conifer looper	coniferous	C
<i>luteata</i> Pack.	"	"	" "	"	C
<i>misturata frostiata</i> Swett.	"	"	" "	"	C
<i>mutata</i> Pears.	"	"	tamarack looper	tamarack	C
<i>palpata</i> Pack.	"	"	spruce cone geometer	spruce, balsam fir	C
<i>ravocostaliata</i> Pack.	"	"	small pine looper	pine	C
<i>sheppardata</i> McD.	"	"	looper	deciduous	C
<i>sobrinata</i> Hbn.	"	"	alder looper	alder	C
<i>sobrinata interruptofasciata</i> Pack.	"	"	juniper looper	juniper	C
<i>strattonata</i> Pack.	"	"	" "	"	C
<i>transcanadata</i> Mack.	"	"	spirea looper	spiraea	C
			small conifer looper	coniferous	C
<i>Euplexia</i>					
<i>benesimilis</i> McD.	Lepidoptera	Noctuidae	owlet moth	general feeder	C
<i>Euproctis</i>					
<i>chrysorrhoea</i> (Linn.)	Lepidoptera	Lymantriidae	<u>browntail</u> moth	deciduous	E
<i>Eupsilia</i>					
<i>morrisoni</i> (Grt.)	Lepidoptera	Noctuidae	owlet moth	elm, maple	C
<i>tristigmata</i> (Grt.)	"	"	" "	cherry	C

<i>Euptoieta claudia</i> (Cram.)	Lepidoptera	Nymphalidae	variegated fritillary	ground plant	F
<i>Eurois astricta</i> Morr.	Lepidoptera	Noctuidae	cutworm	poplar	C
<i>occulta</i> (Linn.)	"	"	"	general feeder	C
<i>Eurrhyncha hortulata</i> (Linn.)	Lepidoptera	Pyralidae	nettle micro moth	nettle	F
<i>Euschistus euschistoides</i> Voll.	Hemiptera	Pentatomidae	stink bug	general feeder	C
<i>tristigmus</i> (Say)	"	"	<u>dusky stink bug</u>	" "	C
<i>Euthisanotia grata</i> (Fabr.)	Lepidoptera	Noctuidae	beautiful wood nymph	vines	F
<i>unio</i> Hbn.	"	"	pearly wood nymph	ground plants	F
<i>Euthyatira pudens</i> Gn.	Lepidoptera	Thyatiridae	false owlet moth	dogwood	C
<i>Euura atra</i> (Jurine)	Hymenoptera	Tenthredinidae	smaller willow shoot sawfly	willow	C
<i>salicisnodus</i> (D.T.)	"	"	willow twiggall sawfly	"	C
<i>Euxoa messoria</i> (Harr.)	Lepidoptera	Noctuidae	<u>darksided cutworm</u>	maple seedlings (agricultural pest)	C
<i>ochrogaster</i> (Gn.)	"	"	<u>redbacked cutworm</u>	agricultural pest	F
<i>scandens</i> (Riley)	"	"	<u>white cutworm</u>	" "	C
<i>tessellata</i> (Harr.)	"	"	<u>striped cutworm</u>	" "	C
<i>Evodinus monticola</i> (Rand.)	Coleoptera	Cerambycidae	longhorned beetle	hemlock	C

SCIENTIFIC NAME	ORDER	FAMILY	COMMON NAME	MAIN HOST PLANT(S) OR INSECT TYPE	IMPORTANCE RATING
<i>Evora</i>					
<i>hemidesma</i> (Zell.)	Lepidoptera	Olethreutidae	spirea leaftier	deciduous	C
<i>Exartema</i>					
<i>appendiceum</i> Zell.	Lepidoptera	Olethreutidae	leafroller	deciduous	C
<i>atrodentanum</i> Fern.	"	"	oak leafroller	oak	C
<i>clavanum</i> Wlk.	"	"	leafroller	elm	C
<i>connectum</i> McD.	"	"	dogwood leaf roller	dogwood	C
<i>corylanum</i> Fern.	"	"	leafroller	hazel	C
<i>fasciatanum</i> Clem.	"	"	"	poplar, willow	C
<i>inornatanum</i> Clem.	"	"	cherry leafroller	cherry	C
<i>merrickanum</i> Kft.	"	"	ironwood leafroller	ironwood, hickory	C
<i>nigranum</i> Heinr.	"	"	basswood leafroller	basswood, maple	C
<i>punctanum</i> Wlsh.	"	"	dogwood leafroller	dogwood	C
<i>quadrifidum</i> Zell.	"	"	leafroller	chokecherry	C
<i>tilianum</i> Heinr.	"	"	basswood leafroller	basswood	C
<i>zellerianum</i> Fern.	"	"	viburnum leafroller	wire birch	C
<i>Exochomus</i>					
<i>septentrionis</i> Weise	Coleoptera	Coccinellidae	lady beetle	predator	D
<i>Exoteleia</i>					
<i>dodecella</i> (Linn.)	Lepidoptera	Gelechiidae	pine bud moth	pine	B
<i>nepheos</i> Free.	"	"	<u>pine candle moth</u>	"	C
<i>pinifoliella</i> (Cham.)	"	"	<u>pine needleminer</u>	jack pine	B
<i>Fagiphagus</i>					
<i>imbricator</i> (Fitch)	Homoptera	Aphididae	<u>beech blight aphid</u>	beech	C
<i>Feltia</i>					
<i>herilis</i> (Grt.)	Lepidoptera	Noctuidae	dingy cutworm	unknown	C



<i>Feniseca tarquinius</i> (Fabr.)	Lepidoptera	Lycaenidae	harvester	predator	D
<i>Fentonia marthesia</i> Cram.	Lepidoptera	Notodontidae	hardwood caterpillar	oak, maple	C
<i>Fenusa dohrnii</i> (Tischb.)	Hymenoptera	Tenthredinidae	<u>European alder leaf-miner</u>	alder	B
<i>pusilla</i> (Lep.)	"	"	<u>birch leafminer</u>	birch	A
<i>ulmi</i> Sund.	"	"	<u>elm leafminer</u>	elm	B
<i>Feralia comstocki</i> Grt.	Lepidoptera	Noctuidae	redlined conifer caterpillar	coniferous	C
<i>jocosa</i> (Gn.)	"	"	redlined conifer caterpillar	"	C
<i>major</i> Sm.	"	"	redlined conifer caterpillar	spruce, pine	C
<i>Filatima betulae</i> Clarke	Lepidoptera	Gelechiidae	birch leafroller	birch	C
<i>demissae</i> Keif.	"	"	leafroller	serviceberry	C
<i>Forficula auricularia</i> L.	Dermaptera	Forticulidae	<u>European earwig</u>	ground plants	F
<i>Framinghamia helvalis</i> (Walker)	Lepidoptera	Pyralidae	poplar leafroller	poplar	C
( <i>Funera</i> ) see <i>Psyche</i>					
( <i>Galerucella</i> ) see <i>Pyrrhalta</i>					
<i>Gargaphia tiliae</i> (Walsh)	Hemiptera	Tingididae	<u>basswood lace bug</u>	basswood	C

SCIENTIFIC NAME	ORDER	FAMILY	COMMON NAME	MAIN HOST PLANT(S) OR INSECT TYPE	IMPORTANCE RATING
<i>Gastrophysa cyanea</i> (Melsh.)	Coleoptera	Chrysomelidae	leaf beetle	dock, rhubarb	F
<i>Gelechia versutella</i> Zell.	Lepidoptera	Gelechiidae	poplar micro moth	aspen	C
<i>Geotrupes balyi</i> Jkl.	Coleoptera	Scarabaeidae	scarab beetle	scavenger	F
<i>Gilpinia frutetorum</i> (F.) <i>hercyniae</i> (Htg.)	Hymenoptera "	Diprionidae "	nursery pine sawfly <u>European spruce</u> <u>sawfly</u>	pine spruce	C C
<i>Glischronchilus quadrisignatus</i> (Say) <i>sanguinolentus</i> Oliv.	Coleoptera "	Nitidulidae "	four-spotted sap beetle sap beetle	sap of plants " " "	C C
<i>Gluphisia lintneri</i> Grt. <i>lintneri avimacula</i> Hud. <i>septentrionalis</i> Wlk.	Lepidoptera " "	Notodontidae " "	poplar caterpillar " pale green notodontid	poplar " deciduous	C C C
<i>Glycobius speciosus</i> (Say)	Coleoptera	Cerambycidae	<u>sugar maple borer</u>	maple	C
<i>Glypta fumiferanae</i> (Vier.)	Hymenoptera	Ichneumonidae	parasite	parasite	D
<i>Glyptoscelis pubescens</i> F.	Coleoptera	Chrysomelidae	hairy leaf beetle	general feeder	C
<i>Gnophothrips fuscus</i> (Morgan) (= <i>piniphilus</i> Cwfd.)	Thysanoptera	Phloeothripidae	<u>slash pine flower</u> <u>thrips</u>	pine	C

<i>Gobaishia</i> <i>ulmifusus</i> (W. & R.)	Homoptera	Aphididae	elm pouchgall aphid	elm	C
<i>Gonioctena</i> <i>americana</i> (Schaeef.)	Coleoptera	Chrysomelidae	<u>American aspen beetle</u>	poplar	B
<i>notmani</i> (Schaeef.)	"	"	willow leaf beetle	willow	C
<i>Gossyparia</i> <i>spuria</i> (Modeer)	Homoptera	Coccidae	<u>European elm scale</u>	elm	C
<i>Gracillaria</i> (all species may go to <i>Caloptilia</i> )					
<i>alnivorella</i> Cham.	Lepidoptera	Gracillariidae	alder leafroller	alder	C
<i>betulivora</i> McD.	"	"	birch leafroller	birch	C
<i>burgessiella</i> Zell.	"	"	dogwood leafroller	dogwood	C
<i>corniella</i> Clem.	"	"	birch leafroller	birch	C
<i>fraxinella</i> Ely.	"	"	ash leafroller	ash	C
<i>invariabilis</i> Braun.	"	"	cherry leafcane caterpillar	cherry	C
<i>rhoifoliella</i> Cham.	"	"	sumac leafroller	sumac	C
<i>sassafrasella</i> Cham.	"	"	sassafras leafroller	sassafras	C
<i>stigmatella</i> Fabr.	"	"	maple leafroller	maple	C
<i>strictella</i> Wlk.	"	"	birch leafroller	birch	C
<i>Grammoptera</i> <i>subargentata</i> (Kby.)	Coleoptera	Cerambycidae	longhorned beetle	deciduous	C
<i>Graphiphora</i> <i>haruspica</i> (Grt.)	Lepidoptera	Noctuidae	cutworm	willow, birch	C
<i>Graphocephala</i> <i>coccinea</i> (Forst.)	Homoptera	Cicadellidae	leaf hopper	shrubs	C
<i>Grapholitha</i> <i>prunivora</i> Walsh	Lepidoptera	Olethreutidae	<u>lesser appleworm</u>	apple	C
<i>Gretchena</i> <i>amatana</i> Heinr.	Lepidoptera	Olethreutidae	micro moth	walnut, butternut	C

SCIENTIFIC NAME	ORDER	FAMILY	COMMON NAME	MAIN HOST PLANT(S) OR INSECT TYPE	IMPORTANCE RATING
<i>Gretchena</i> <i>delicatana</i> Heinr. <i>semialba</i> McD.	Lepidoptera "	Olethreutidae "	ironwood fruitworm alder leaftier	ironwood alder	C C
<i>Griselda</i> <i>radicana</i> Wlshm.	Lepidoptera	Olethreutidae	redstriped needle- worm	spruce	C
<i>Gymnandrosoma</i> <i>punctidiscanum</i> Dyar.	Lepidoptera	Olethreutidae	micro moth	locust	C
<i>Gypsonoma</i> <i>fasciolana</i> Clem.	Lepidoptera	Olethreutidae	willow-and-poplar leafroller	willow, poplar	C
<i>hainbachiana</i> Kft.	"	"	cottonwood twig borer	poplar	C
<i>salicicolana</i> Clem.	"	"	willow leafroller	willow	C
<i>substitutionis</i> Heinr.	"	"	micro moth	deciduous	C
<i>Habrosyne</i> <i>scripta</i> Gosse	Lepidoptera	Thyatiridae	false owlet moth	unknown	C
<i>Halysidota</i> <i>caryae</i> (Harr.)	Lepidoptera	Arctiidae	<u>hickory tussock moth</u>	coniferous	C
<i>harrisii</i> Walsh.	"	"	<u>sycamore tussock moth</u>	"	C
<i>maculata</i> (Harr.)	"	"	<u>spotted tussock moth</u>	"	C
<i>tessellaris</i> (J.E. Smith)	"	"	<u>pale tussock moth</u>	"	C
<i>Hamamelistes</i> <i>spinosus</i> Shim.	Homoptera	Aphididae	witch hazel gall aphid	hazel	C
<i>Haploa</i> <i>confusa</i> Lyman	Lepidoptera	Arctiidae	tiger moth	deciduous	C

<i>Haploa</i>						
<i>contigua</i> Wlk.	Lepidoptera	Arctiidae	tiger moth	aspen	C	
<i>lecontei</i> Guer.	"	"	" "	deciduous	C	
<i>Harpigteryx</i>						
<i>xylostella</i> (Linn.)	Lepidoptera	Plutellidae	<u>European honeysuckle</u> <u>leafroller</u>	honeysuckle	C	
<i>Hedia</i>						
<i>chionosema</i> Zell.	Lepidoptera	Olethreutidae	micro moth	deciduous	C	
<i>ochroleucana</i> (Froh.)	"	"	rose leafroller	"	C	
<i>separatana</i> Kft.	"	"	micro moth	birch, serviceberry	C	
<i>Helicoverpa</i> or <i>Heliothis</i>						
<i>zea</i> (Boddie)	Lepidoptera	Noctuidae	<u>corn earworm</u>	corn	G	
<i>Heliomata</i>						
<i>cycladata</i> Grt.	Lepidoptera	Geometridae	stout locust looper	locust	C	
<i>Heliothis</i> see <i>Helicoverpa</i>						
<i>Helotropha</i>						
<i>reniformis</i> Grt.	Lepidoptera	Geometridae	owlet moth	unknown	C	
<i>Hemaris</i>						
<i>diffinis</i> Bdv.	Lepidoptera	Sphingidae	snowberry clearwing	deciduous	C	
<i>gracilis</i> G. & R.	"	"	clearwing hawk moth	"	C	
<i>thysbe</i> Fabr.	"	"	hummingbird clearwing	"	C	
<i>Hemichroa</i>						
<i>crocea</i> (Geoff.)	Hymenoptera	Tenthredinidae	<u>striped alder sawfly</u>	alder	C	
<i>thoracicus</i> Hgtm.	"	"	cherry sawfly	cherry	C	
<i>Hepialus</i>						
<i>gracilis</i> Grt.	Lepidoptera	Hepialidae	graceful ghost moth	unknown	C	

SCIENTIFIC NAME	ORDER	FAMILY	COMMON NAME	MAIN HOST PLANT(S) OR INSECT TYPE	IMPORTANCE RATING
<i>Heptagrotis phyllophora</i> (Grt.)	Lepidoptera	Noctuidae	cutworm	deciduous	C
<i>Herculia devialis</i> Grt. <i>intermedialis</i> Wlk.	Lepidoptera "	Pyralidae "	spruce micro moth conifer micro moth	spruce spruce, balsam fir	C C
<i>Hesperia sassocus</i> Harr.	Lepidoptera	Hesperiidae	Indian skipper	unknown	C
<i>Hesperumia sulphuraria</i> Pack.	Lepidoptera	Geometridae	looper	general feeder	C
<i>Heterarthrus nemoratus</i> (Fall.)	Hymenoptera	Tenthredinidae	late birchleaf edgeminer	birch	C
<i>Heterocampa bilineata</i> Pack. <i>biundata</i> Wlk. <i>guttivitta</i> (Wlk.) <i>manteo</i> (Dbldy.)	Lepidoptera " " "	Notodontidae " " "	elm prominent prominent moth <u>saddled prominent</u> <u>variable oakleaf</u> <u>caterpillar</u>	elm deciduous sugar maple, beech deciduous	C C A C
<i>obliqua</i> Pack. <i>umbrata</i> Wlk. <i>umbrata pulverea</i> G. & R.	" " "	" " "	prominent moth " "	oak birch, oak " "	C C C
<i>Heterophleps refusata</i> Wlk. <i>triguttaria</i> H.-S.	Lepidoptera "	Geometridae "	looper "	unknown maple	C C
<i>Hippodamia convergens</i> G.-M.	Coleoptera	Coccinellidae	<u>convergent lady</u> <u>beetle</u>	predator	D

<i>Hippodamia</i>					
<i>parenthesis</i> Say	Coleoptera	Coccinellidae	lady beetle	predator	D
<i>tredecimpunctata tibialis</i> (Say)	"	"	<u>thirteenspotted lady</u> <u>beetle</u>	"	D
<i>Holcocera</i>					
<i>chalcfrontella</i> Clem.	Lepidoptera	Blastobasidae	sumac micro moth	sumac	C
<i>immaculella</i> McD.	"	"	conifer micro moth	pine, spruce	C
<i>Holomelina</i>					
<i>aurantiaca</i> (Hbn.)	Lepidoptera	Arctiidae	arctiid moth	pine	C
<i>ferruginosa</i> Wlk.	"	"	" "	unknown	C
<i>laeta treatii</i> (Grt.)	"	"	" "	"	C
<i>Homadaula</i>					
<i>anisocentra</i> Meyr.	Lepidoptera	Glyphipterygidae	<u>mimosa webworm</u>	locust	B
<i>Homoglaea</i>					
<i>hircina</i> Morr.	Lepidoptera	Noctuidae	goat sallow	aspen	C
<i>Homohadena</i>					
<i>badistriga</i> (Grt.)	Lepidoptera	Noctuidae	honeysuckle budworm	honeysuckle	C
<i>Hoplia</i>					
<i>trifasciata</i> Say	Coleoptera	Scarabaeidae	scarab beetle	flowers	F
<i>Hoplochaitophorus</i>					
<i>quercicola</i> Monell	Homoptera	Aphididae	oak aphid	oak	C
<i>Horisme</i>					
<i>intestinata</i> Gn.	Lepidoptera	Geometridae	loopers	unknown	C
<i>Hormaphis</i>					
<i>hamamelidis</i> (Fitch)	Homoptera	Aphididae	witch-hazel conegall aphid	witch-hazel	C

SCIENTIFIC NAME	ORDER	FAMILY	COMMON NAME	MAIN HOST PLANT(S) OR INSECT TYPE	IMPORTANCE RATING
<i>Hyalophora</i> <i>cecropia</i> (Linn.) <i>columbia</i> Smith	Lepidoptera "	Saturniidae "	<u>cecropia moth</u> larch silkworm	deciduous larch	C C
<i>Hybomitra</i> <i>zonalis</i> (Kirby)	Diptera	Tabanidae	moose fly	biting insect	F
<i>Hydrelia</i> <i>inornata</i> Hlst.	Lepidoptera	Geometridae	birch looper	birch	C
<i>Hydria</i> <i>prunivorata</i> Ferg.	Lepidoptera	Geometridae	cherry scalloshell moth	black cherry	B
<i>undulata</i> Linn.	"	"	scalloshell moth	deciduous	C
<i>Hydriomena</i> <i>divisaria</i> Wlk.	Lepidoptera	Geometridae	transverse banded looper	spruce	C
<i>furcata</i> Thun.	"	"	transverse banded looper	willow, ash	C
<i>renunciata</i> Wlk.	"	"	alder looper	alder	C
<i>Hylastes</i> <i>porculus</i> Erich.	Coleoptera	Scolytidae	bark beetle	pine	C
<i>Hylemya</i> <i>anthracina</i> (Czerny)	Diptera	Anthomyiidae	spruce cone maggot	spruce cones	A
<i>Hyles</i> <i>gallii</i> (Rott.)	Lepidoptera	Sphingidae	bedstraw sphinx	ground plants	F
<i>Hylobius</i> <i>congener</i> D. T.	Coleoptera	Curculionidae	bark weevil	pine logs or stumps	C



<i>Hylobius</i>					
<i>pales</i> (Hbst.)	Coleoptera	Curculionidae	<u>pales weevil</u>	pine	B
<i>piceus</i> (DeG.)	"	"	large spruce weevil	spruce	C
<i>pinicola</i> (Couper)	"	"	Couper's collar weevil	pine	C
<i>radicis</i> Buch.	"	"	<u>pine root collar weevil</u>	"	B
<i>warreni</i> Wood	"	"	Warren's collar weevil	coniferous	C
<i>Hylurgopinus</i>					
<i>rufipes</i> (Eich.)	Coleoptera	Scolytidae	<u>native elm bark beetle</u>	elm	A
<i>Hylurgops</i>					
<i>pinifex</i> (Fitch)	Coleoptera	Scolytidae	bark beetle	pine, spruce	C
<i>Hymenorus</i>					
<i>discretus</i> Csy.	Coleoptera	Alleculidae	combclawed beetle	deciduous	C
<i>melsheimeri</i> Csy.	"	"	" "	"	C
<i>niger</i> Melsh.	"	"	" "	"	C
<i>pilosus</i> Melsh.	"	"	" "	"	C
<i>Hypagyrtis</i>					
<i>piniata</i> Pack.	Lepidoptera	Geometridae	diamond backed conifer looper	coniferous	C
<i>subatomaria</i> (Wood) (= <i>nubecularia</i> Gn.)	"	"	looper	deciduous	C
<i>Hypera</i>					
<i>punctata</i> F.	Coleoptera	Curculionidae	<u>clover leaf weevil</u>	clover	F
<i>Hyperaspis</i>					
<i>bigeminata</i> Rand.	Coleoptera	Coccinellidae	lady beetle	predator	D
<i>binotata</i> Say	"	"	" "	"	D
<i>congressis</i> Watson	"	"	" "	"	D

SCIENTIFIC NAME	ORDER	FAMILY	COMMON NAME	MAIN HOST PLANT(S) OR INSECT TYPE	IMPORTANCE RATING
<i>Hyperaspis</i> <i>paspalis</i> Watson <i>proba</i> Say	Coleoptera "	Coccinellidae "	lady beetle " "	predator "	D D
<i>Hyperetis</i> <i>amicaria</i> H. S. <i>amicaria alienaria</i> H. S. <i>amicaria nyssaria</i> Gn.	Lepidoptera " "	Geometridae " "	redcheeked looper loopers "	alder maple "	C C C
<i>Hyphantria</i> <i>cunea</i> (Dru.)	Lepidoptera	Arctiidae	<u>fall webworm</u>	deciduous	B
<i>Hypoprepia</i> <i>fucosa</i> Hbn. <i>miniata</i> Kby.	Lepidoptera "	Arctiidae "	painted lichen moth scarletwinged lichen moth	general feeder " "	C C
<i>Hyposoter</i> <i>fugitivus fugitivus</i> Say	Hymenoptera	Ichneumonidae	parasite	parasite	D
<i>Hyppa</i> <i>xylinoides</i> (Gn.)	Lepidoptera	Noctuidae	cranberry cutworm	cranberry	C
<i>Ichthyura</i> <i>albosigma</i> Fitch <i>apicalis</i> Wlk. <i>inclusa</i> Hbn. <i>strigosa</i> Grt.	Lepidoptera " " "	Notodontidae " " "	rustylined leaftier redmarked tentmaker <u>poplar tentmaker</u> poplar leaftier	poplar " " "	C C C C
<i>Idiocerus</i> <i>populi</i> L.	Homoptera	Cicadellidae	leafhopper	poplar	C
<i>(Incisalia)</i> see <i>Callophrys</i>					

<i>Ipimorpha pleonectusa</i> Grt.	Lepidoptera	Noctuidae	blackcheeked aspen caterpillar	poplar, willow	C
<i>Ips borealis</i> Sw.	Coleoptera	Scolytidae	northern engraver	spruce	C
<i>calligraphus</i> (Germ.)	"	"	coarse-writing engraver	pine	C
<i>grandicollis</i> (Eich.)	"	"	southern pine engraver	pine	C
<i>perroti</i> Sw.	"	"	pine engraver	pine	C
<i>perturbatus</i> (Eich.)	"	"	northern spruce engraver	spruce	C
<i>pini</i> (Say)	"	"	<u>pine engraver</u>	"	B
<i>Iridopsis larvaria</i> Gn.	Lepidoptera	Geometridae	looper	deciduous	C
( <i>Isia</i> ) see <i>Pyrrharctia</i>					
<i>Isomira quadristriata</i> Couper	Coleoptera	Alleculidae	combclawed beetle	deciduous	C
<i>Itame anataria</i> Swett.	Lepidoptera	Geometridae	spanworm	white birch	C
<i>argillacearia</i> Pack.	"	"	"	pine	C
<i>exauspicata</i> Wlk.	"	"	"	deciduous	C
<i>fulvaria</i> Vill.	"	"	"	spruce	C
<i>latiferrugata</i> Wlk.	"	"	cherry spanworm	cherry	C
<i>loricaria</i> Evers.	"	"	false Bruce spanworm	aspen	C
<i>loricaria julia</i> Hlst.	"	"	" " "	poplar	C
<i>pustularia</i> Gn.	"	"	lesser maple spanworm	maple	C
<i>ribearia</i> (Fitch)	"	"	currant spanworm	currant	C
<i>Itonida canadensis</i> Feltham	Diptera	Cecidomyiidae	juneberry veingall midge	juneberry	C

SCIENTIFIC NAME	ORDER	FAMILY	COMMON NAME	MAIN HOST PLANT(S) OR INSECT TYPE	IMPORTANCE RATING
<i>Itoplectis</i> <i>conquisitor</i> Say	Hymenoptera	Ichneumonidae	parasite	parasite	D
<i>Janus</i> <i>abbreviatus</i> (Say)	Hymenoptera	Cephidae	<u>willow shoot sawfly</u>	willow	C
<i>integer</i> (Nort.)	"	"	<u>currant stem girdler</u>	currant	C
<i>Kleidocerys</i> <i>resedae geminatus</i> (Say)	Hemiptera	Lygaeidae	birch catkin bug	birch	C
<i>Kundrya</i> <i>finitimana</i> Heinr.	Lepidoptera	Olethreutidae	micro moth	ground plant	F
<i>Labidomera</i> <i>clivicollis clivicollis</i> (Kby.)	Coleoptera	Chrysomelidae	milkweed leaf beetle	milkweed	F
<i>Lacinipolia</i> <i>lorea</i> (Gn.)	Lepidoptera	Noctuidae	cutworm	dandelion	F
<i>lustralis</i> (Grt.)	"	"	"	dandelion, alfalfa	F
<i>meditata</i> (Grt.)	"	"	pinkbacked cutworm	dandelion	F
<i>olivacea</i> (Morr.)	"	"	cutworm	"	F
<i>renigera</i> (Steph.)	"	"	<u>bristly cutworm</u>	dandelion, plantain	F
<i>Lacon</i> <i>brevicornis</i> Lec.	Coleoptera	Elateridae	click beetle	soil insect	F
<i>obtectus</i> Say	"	"	" "	" "	F
<i>Lambdina</i> <i>fervidana athasaria</i> Wlk.	Lepidoptera	Geometridae	looper	deciduous	C
<i>fiscellaria fiscellaria</i> (Gn.)	"	"	<u>hemlock looper</u>	general feeder	A
<i>Lapara</i> <i>bombycoides</i> Wlk.	Lepidoptera	Sphingidae	pine sphinx	pine	C

<i>Laspeyresia</i>					
<i>candana</i> Forbes	Lepidoptera	Olethreutidae	maple seedworm	maple	C
<i>caryana</i> (Fitch)	"	"	<u>hickory shuckworm</u>	hickory	C
<i>ingrata</i> Heinr.	"	"	poplar seedworm	poplar	C
<i>toreuta</i> (Grt.)	"	"	eastern pine seed- worm	pine	C
<i>youngana</i> (Kft.)	"	"	<u>spruce seed moth</u>	spruce	B
<i>Lecanium</i>					
<i>corni</i> Bouche	Homoptera	Coccidae	<u>European fruit</u> <u>lecanium</u>	fruit trees	B
<i>quercifex</i> Fitch	"	"	<u>oak lecanium</u>	oak	C
<i>Lepidosaphes</i>					
<i>ulmi</i> (Linn.)	Homoptera	Coccidae	<u>oystershell scale</u>	fruit trees	B
<i>Leptocoris</i>					
<i>trivittatus</i> (Say)	Hemiptera	Rhopalidae	<u>boxelder bug</u>	Manitoba maple	C
<i>Leptura</i>					
<i>subhamata</i> Rand.	Coleoptera	Cerambycidae	longhorned beetle	red maple	C
<i>Lepyryus</i>					
<i>alternans</i> Csy.	Coleoptera	Curculionidae	weevil	willow	C
<i>nordenskioldi canadensis</i> Csy.	"	"	poplar-willow leaf weevil	poplar, willow	C
<i>palustris</i> Scop.	"	"	weevil	willow	C
<i>Lestodiplosis</i>					
<i>grassator</i> (Fyles)	Diptera	Cecidomyiidae	midge	probably a predator	D
<i>Lethocerus</i>					
<i>americanus</i> (Leidy)	Hemiptera	Belostomatidae	<u>giant water bug</u>	aquatic	F
( <i>Leucania</i> ) see <i>Pseudaletia</i>					
<i>Leucanthiza</i>					
<i>dircella</i> Braun.	Lepidoptera	Gracillariidae	leatherwood leafminer	leatherwood	C

SCIENTIFIC NAME	ORDER	FAMILY	COMMON NAME	MAIN HOST PLANT(S) OR INSECT TYPE	IMPORTANCE RATING
<i>Leucoma</i> <i>salicis</i> (Linn.)	Lepidoptera	Lymantriidae	<u>satin moth</u>	poplar, willow	B
<i>Leuconycta</i> <i>diphtheroides</i> (Gn.)	Lepidoptera	Noctuidae	goldenrod noctuid	goldenrod	F
<i>(Leucoptera)</i> see <i>Paraleucoptera</i>					
<i>Lexis</i> <i>bicolor</i> (Grt.)	Lepidoptera	Arctiidae	smoky moth	coniferous	C
<i>Limacodes</i> <i>y-inversa</i> Pack.	Lepidoptera	Limacodidae	slug caterpillar	beech	C
<i>Limenitis</i> <i>archippus</i> (Cram.)	Lepidoptera	Nymphalidae	<u>viceroy</u>	deciduous	C
<i>arthemis</i> (Dru.)	"	"	white admiral	"	C
<i>astyanax</i> (Fabr.)	"	"	redspotted purple	"	C
<i>Limonius</i> <i>aeger</i> Lec.	Coleoptera	Elateridae	click beetle	soil insect	C
<i>Lithacodes</i> <i>fasciola</i> H.-S.	Lepidoptera	Limacodidae	slug caterpillar	deciduous	C
<i>Lithacodia</i> <i>albidula</i> (Gn.)	Lepidoptera	Noctuidae	owlet moth	grasses	C
<i>(Lithocolletis)</i> see <i>Phyllonarycter</i> , <i>Cameraria</i> or <i>Chrysaster</i>					

<i>Litholomia</i> <i>napaea</i> (Morr.)	Lepidoptera	Noctuidae	owlet moth	aspen	C
<i>Lithomoia</i> <i>solidaginis</i> (Hbn.)	Lepidoptera	Noctuidae	owlet moth	blueberry, labrador tea	C
<i>Lithophane</i> <i>amanda</i> (Sm.)	Lepidoptera	Noctuidae	owlet moth	deciduous	C
<i>antennata</i> Wlk.	"	"	<u>green fruitworm</u>	apple	C
<i>baileyi</i> Grt.	"	"	owlet moth	choke cherry	C
<i>bethunei</i> (G. & R.)	"	"	" "	deciduous	C
<i>cinerosa</i> Grt.	"	"	green fruitworm	"	C
<i>disposita</i> Morr.	"	"	owlet moth	cherry, willow	C
<i>fagina</i> Morr.	"	"	" "	birch	C
<i>ferrealis</i> Grt.	"	"	" "	deciduous	C
<i>georgii</i> Grt.	"	"	" "	"	C
<i>hemina</i> Grt.	"	"	" "	"	C
<i>innominata</i> Sm.	"	"	" "	cherry	C
<i>laticinerea</i> Grt.	"	"	green fruitworm	cherry, apple	C
<i>lepida</i> (Lint.)	"	"	owlet moth	pine	C
<i>patefacta</i> (Wlk.)	"	"	" "	cherry	C
<i>petulca</i> Grt.	"	"	" "	deciduous	C
<i>pexata</i> Grt.	"	"	" "	general feeder	C
<i>semiusta</i> Grt.	"	"	" "	deciduous	C
<i>tepida</i> Grt.	"	"	" "	"	C
<i>thaxteri</i> Grt.	"	"	" "	general feeder	C
<i>unimoda</i> (Lint.)	"	"	" "	cherry	C
<i>Lobophora</i> <i>nivigerata</i> Wlk.	Lepidoptera	Geometridae	twolined aspen looper	aspen	C
<i>Lomanaltes</i> <i>eductalis</i> Wlk.	Lepidoptera	Noctuidae	alder caterpillar	alder	C
<i>(Lophodonta)</i> see <i>Peridea</i>					

SCIENTIFIC NAME	ORDER	FAMILY	COMMON NAME	MAIN HOST PLANT(S) OR INSECT TYPE	IMPORTANCE RATING
<i>Lozogramma subaequaria</i> Wlk.	Lepidoptera	Geometridae	leaping looper	chokecherry	C
<i>Lucidota atra</i> F.	Coleoptera	Lampyridae	firefly	predator	D
<i>corrusca</i> Linn.	"	"	"	"	D
<i>nigricans</i> Say	"	"	"	"	D
<i>Lycaena phlaeas americana</i> Harr.	Lepidoptera	Lycaenidae	common copper	<u>Rumex</u> spp.	C
<i>Lycia ursaria</i> Wlk.	Lepidoptera	Geometridae	stout looper	deciduous	C
<i>Lycomorpha pholus</i> Dru.	Lepidoptera	Amatidae	lichen caterpillar	lichen	F
<i>Lygaeus Kalmii</i> Stal.	Hemiptera	Lygaeidae	<u>small milkweed bug</u>	milkweed	F
<i>(Lygris) see Eulythis</i>					
<i>Lymantor decipiens</i> Lec.	Coleoptera	Scolytidae	bark beetle	deciduous	C
<i>Lymantria dispar</i> (Linn.)	Lepidoptera	Lymantriidae	<u>gypsy moth</u>	general feeder	A
<i>Lytta sayi</i> (Lec.)	Coleoptera	Meloidae	<u>Say blister beetle</u>	larva - predator, adult- general feeder	D C
<i>Machimia tentoriferella</i> Clem.	Lepidoptera	Oecophoridae	leaf folder	deciduous	C



<i>Macremphytus intermedius</i> (Dyar)	Hymenoptera	Tenthredinidae	dogwood sawfly	dogwood	C
<i>varianus</i> (Nort.)	"	"	" "	"	C
<i>Macrobotys pertextalis</i> Led.	Lepidoptera	Pyralidae	leafroller	deciduous	C
<i>thestialis</i> Wlk.	"	"	"	"	C
<i>Macroductylus subspinosus</i> (F.)	Coleoptera	Scarabaeidae	<u>rose chafer</u>	rose, wild grape	C
<i>Macrophya punctumalbum</i> L.	Hymenoptera	Tenthredinidae	European privet sawfly	privet	C
<i>Macroxyela ferruginea</i> (Say)	Hymenoptera	Xyelidae	elm sawfly	elm	C
<i>Magdalis austera</i> Fall	Coleoptera	Curculionidae	weevil	deciduous	C
<i>austera substriga</i> Fall	"	"	"	"	C
<i>barbita</i> (Say)	"	"	<u>black elm bark weevil</u>	"	C
<i>perforata</i> Horn	"	"	weevil	"	C
<i>Malachius aeneus</i> Linn.	Coleoptera	Melyridae	flower beetle	flowers	F
<i>Malacosoma americanum</i> F.	Lepidoptera	Lasiocampidae	<u>eastern tent caterpillar</u>	cherry	B
<i>californicum lutescens</i> N. & D.	"	"	prairie tent caterpillar	"	E
<i>californicum pluviale</i> Dyar	"	"	northern tent caterpillar	"	B
<i>disstria</i> Hbn.	"	"	<u>forest tent caterpillar</u>	aspen, deciduous	A

SCIENTIFIC NAME	ORDER	FAMILY	COMMON NAME	MAIN HOST PLANT(S) OR INSECT TYPE	IMPORTANCE RATING
<i>Manestra</i> <i>curialis</i> (Sm.)	Lepidoptera	Noctuidae	garden armyworm	ground plants	F
<i>Manduca</i> <i>quinquemaculata</i> (Haw.)	Lepidoptera	Sphingidae	<u>tomato hornworm</u>	tomato, potato	G
<i>sexta</i> (Linn.)	"	"	<u>tobacco hornworm</u>	tobacco, tomato, potato	G
<i>Mantis</i> <i>religiosa</i> Linn.	Orthoptera	Mantidae	<u>European mantid</u>	predator	D
<i>Marathyssa</i> <i>inficita</i> Wlk.	Lepidoptera	Noctuidae	sumac caterpillar	sumac	C
<i>Marmara</i> <i>fasciella</i> Cham.	Lepidoptera	Gracillariidae	white pine bark miner	white pine	C
<i>Martyrhilda</i> <i>ciniflonella</i> (Lien. & Zell.) (= <i>klamathiana</i> Wlshm.)	Lepidoptera	Oecophoridae	leafroller	poplar, alder	C
<i>Matsucoccus</i> <i>macrocitrices</i> Richards	Homoptera	Coccidae	white pine fungus scale	white pine	C
<i>Mayetiola</i> <i>carpophaga</i> (Tripp)	Diptera	Cecidomyiidae	spruce seed midge	spruce cone	C
<i>celtiphyllia</i> Felt	"	"	hackberry midge	hackberry	C
<i>piceae</i> (Felt)	"	"	spruce gall midge	spruce	C
<i>rigidae</i> (O. S.)	"	"	<u>willow beaked-gall</u> <u>midge</u>	willow	C
<i>ulmi</i> (Beutm.)	"	"	elm midge	elm	C
<i>walshii</i> Felt	"	"	clustered willow gall midge	willow	C

<i>Meadorus</i> <i>lateralis</i> Say	Hemiptera	Pentatomidae	mottled stink bug	predator	D
<i>Mecas</i> <i>inornata</i> Say	Coleoptera	Cerambycidae	poplar gall borer	poplar	C
<i>Mecyna</i> <i>mustelinalis</i> Pack.	Lepidoptera	Pyralidae	micro moth	unknown	C
<i>Megacyllene</i> <i>caryae</i> (Gah.)	Coleoptera	Cerambycidae	<u>painted hickory</u> <u>borer</u>	hickory, ash	C
<i>robiniae</i> (Forst.)	"	"	<u>locust borer</u>	black locust	C
<i>Megarhyssa</i> <i>macrurus macrurus</i> Linn.	Hymenoptera	Ichneumonidae	parasite	parasite	D
<i>Megastigmus</i> <i>atedius</i> Wlk. (= <i>piceae</i> Roh.)	Hymenoptera	Torymidae	spruce seed chalcid	spruce and white pine cones	C
<i>laricis</i> Marc.	"	"	larch " "	larch	C
<i>specularis</i> Wly.	"	"	fir " "	balsam fir	C
<i>Megaxyela</i> <i>major</i> (Cress.)	Hymenoptera	Xyelidae	hickory sawfly	hickory	C
( <i>Melanagromyza</i> ) see <i>Napomyza</i>					
<i>Melanolophia</i> <i>canadaria</i> Gn.	Lepidoptera	Geometridae	variable redmarked loopers	deciduous	C
<i>imitata</i> (Wlk.)	"	"	striped green looper	coniferous	C
<i>signataria</i> Wlk.	"	"	" " "	general feeder	C
<i>Melanophila</i> <i>acuminata</i> DeG.	Coleoptera	Buprestidae	flatheaded wood borer	coniferous	C

SCIENTIFIC NAME	ORDER	FAMILY	COMMON NAME	MAIN HOST PLANT(S) OR INSECT TYPE	IMPORTANCE RATING
<i>Melanotus</i> <i>castanipes</i> Payk. <i>leonardi</i> Lec.	Coleoptera "	Elateridae "	click beetle " "	soil insects " "	F F
<i>Melaphis</i> <i>rhois</i> (Fitch)	Homoptera	Aphididae	sumac aphid	sumac	C
<i>Melissopus</i> <i>latiferreanus</i> (Wlsh.) ( <i>Melitaea</i> ) see <i>Chlosyne</i>	Lepidoptera	Olethreutidae	<u>filbertworm</u>	hazel	C
<i>Meloe</i> <i>americanus</i> Leach	Coleoptera	Meloidae	buttercup oil beetle	larva - predator	D
<i>angusticollis</i> Say	"	"	blister beetle	adult - general feeder larva - predator adult - general feeder	C D C
<i>Meoneura</i> <i>obscurella</i> (Fall.)	Diptera	Milichiidae	European leafminer	deciduous	C
<i>Meroptera</i> <i>abditiva</i> Heinr. <i>pravella</i> Grt.	Lepidoptera "	Pyralidae "	micro moth lesser aspen webworm	poplar aspen	C C
<i>Mesoleius</i> <i>tenthredinis</i> Morley	Hymenoptera	Ichneumonidae	parasite	parasite	D
<i>Messa</i> <i>nana</i> (Klug)	Hymenoptera	Tenthredinidae	early birch leaf edgeminer	birch	C
<i>populifoliella</i> (Town.)	"	"	poplar leafmining sawfly	poplar	C

<i>Metalepsis salicarium</i> (Wlk.)	Lepidoptera	Noctuidae	owlet moth	unknown	C
<i>Metalus rohweri</i> MacG.	Hymenoptera	Tenthredinidae	blackberry leafminer	berry bushes	C
<i>Metanema determinata</i> Wlk.	Lepidoptera	Geometridae	looper	unknown	C
<i>inatomaria</i> Gn.	"	"	poplar looper	poplar	C
<i>Microgoes oculatus</i> (Lec.)	Coleoptera	Cerambycidae	longhorned wood borer	deciduous	C
<i>Micrapteryx salicifoliella</i> Cham.	Lepidoptera	Gracillariidae	willow leafminer	willow	B
<i>Mindarus abietinus</i> Koch.	Homoptera	Aphididae	<u>balsam twig aphid</u>	balsam fir	C
<i>Monochamus marmorator</i> Kby.	Coleoptera	Cerambycidae	<u>balsam fir sawyer</u>	coniferous	B
<i>mutator</i> Lec.	"	"	sawyer beetle	"	C
<i>notatus</i> (Drury)	"	"	northeastern sawyer	"	B
<i>scutellatus</i> (Say)	"	"	<u>whitespotted sawyer</u>	"	A
<i>Monoctenus fulvus</i> (Nort.)	Hymenoptera	Diprionidae	cedar sawfly	cedar, juniper	C
<i>juniperinus</i> MacG.	"	"	arborvitae sawfly	" "	C
<i>suffusus</i> (Cress.)	"	"	juniper sawfly	" "	C
<i>Moodna ostrinella</i> Clem.	Lepidoptera	Pyralidae	micro moth	sumac, oak	C
<i>Mordwilkoja vagabunda</i> (Walsh)	Homoptera	Aphididae	<u>poplar vagabond aphid</u>	poplar	C

SCIENTIFIC NAME	ORDER	FAMILY	COMMON NAME	MAIN HOST PLANT(S) OR INSECT TYPE	IMPORTANCE RATING
<i>Morrisonia</i> <i>confusa</i> (Hbn.)	Lepidoptera	Noctuidae	owlet moth	deciduous	C
<i>distincta</i> (Hbn.)	"	"	" "	"	C
<i>Mulsantina</i> <i>hudsonica</i> Csy.	Coleoptera	Coccinellidae	lady beetle	predator	D
<i>picta</i> Rand.	"	"	pine lady beetle	"	D
<i>Musca</i> <i>domestica</i> Linn.	Diptera	Muscidae	<u>house fly</u>	household	G
<i>Mycodiplosis</i> <i>cerasifolia</i> Felt	Diptera	Cecidomyiidae	chokecherry leaf midge	chokecherry	C
<i>Myzus</i> <i>cerasi</i> (Fabr.)	Homoptera	Aphididae	<u>black cherry aphid</u>	cherry	C
<i>Nadata</i> <i>gibbosa</i> (J. E. Smith)	Lepidoptera	Notodontidae	yellowlined cater- pillar	deciduous	C
<i>Napomyza</i> <i>schineri</i> (Gir.)	Diptera	Agromyzidae	poplar twiggall fly	poplar	C
<i>Neacanthocinus</i> <i>obsoletus</i> Oliv.	Coleoptera	Cerambycidae	longhorned wood borer	coniferous	C
<i>pusillus</i> (Kirby)	"	"	longhorned pine borer	pine	C
<i>Nematocampa</i> <i>filamentaria</i> Gn.	Lepidoptera	Geometridae	<u>filament bearer</u>	general feeder	C
<i>Nematus</i> <i>erythrogaster</i> (Nort.)	Hymenoptera	Tenthredinidae	alder sawfly	alder	C

<i>Nematus</i>						
<i>fulvicrus</i> Prov.	Hymenoptera	Tenthredinidae	willow sawfly	willow		C
<i>latifasciatus</i> Cress.	"	"	" "	"		C
<i>limbatus</i> Cress.	"	"	" "	"		C
<i>lucidae</i> (Roh.)	"	"	willow gall sawfly	"		C
<i>mendicus</i> Walsh	"	"	poplar sawfly	poplar		C
<i>oligospilus</i> Forst.	"	"	willow-and-poplar sawfly	willow, poplar		C
<i>pinguidorsum</i> Dyar	"	"	birch sawfly	birch		C
<i>populi</i> Marl.	"	"	poplar sawfly	poplar		C
<i>ribesii</i> (Scop.)	"	"	imported currantworm	currant, gooseberry		C
<i>salicisodoratus</i> Dyar	"	"	willow sawfly	willow		C
<i>umbratus</i> Thoms.	"	"	alder sawfly	alder		C
<i>ventralis</i> Say	"	"	<u>willow sawfly</u>	willow		C
<i>Nemoria</i>						
<i>mimosaria</i> Gn.	Lepidoptera	Geometridae	flanged looper	general feeder		C
<i>rubrifrontaria</i> Pack.	"	"	" "	alder		C
<i>Neoclytus</i>						
<i>acuminatus</i> (F.)	Coleoptera	Cerambycidae	<u>redheaded ash borer</u>	ash		C
<i>Neodiprion</i>						
<i>abbotii</i> (Leach)	Hymenoptera	Diprionidae	pine sawfly	jack and red pine		C
<i>abietis</i> complex	"	"	<u>balsam fir sawfly</u>	balsam fir		A
<i>compar</i> (Leach)	"	"	pine sawfly	jack pine		C
<i>lecontei</i> (Fitch)	"	"	<u>redheaded pine sawfly</u>	pine		A
<i>maurus</i> Roh.	"	"	pine sawfly	jack pine		C
<i>nanulus nanulus</i> Schedl.	"	"	<u>red pine sawfly</u>	red and jack pine		B
<i>nigroscutum</i> (Midd.)	"	"	pine sawfly	jack pine		C
<i>pinetum</i> (Nort.)	"	"	<u>white pine sawfly</u>	white pine		C
<i>pratti banksianae</i> Roh.	"	"	<u>jack pine sawfly</u>	jack pine		A
<i>pratti paradoxicus</i> Ross	"	"	jack pine sawfly	" "		A
<i>sertifera</i> (Geoff.)	"	"	<u>European pine sawfly</u>	pine		A
<i>swainei</i> Midd.	"	"	<u>Swaine jack pine sawfly</u>	jack pine		A
<i>virginianus</i> complex	"	"	redheaded jack pine sawfly	" "		A

SCIENTIFIC NAME	ORDER	FAMILY	COMMON NAME	MAIN HOST PLANT(S) OR INSECT TYPE	IMPORTANCE RATING
<i>Neomysia</i> <i>pullata randalli</i> Csy. <i>subvittata</i> Muls.	Coleoptera "	Coccinellidae "	lady beetle " "	predator "	D D
<i>(Neosymdobioides)</i> see <i>Symydobioides</i>					
<i>Nepheleodes</i> <i>minians</i> Gn. (= <i>emmedonius</i> Cram.)	Lepidoptera	Noctuidae	<u>bronzed cutworm</u>	unknown	C
<i>Nephoteryx</i> <i>basilaris</i> Zell. <i>carneella</i> Hlst. <i>subcaesiella</i> (Clem.) <i>subfuscella</i> Rag.	Lepidoptera " " "	Pyralidae " "	micro moth " " <u>locust leafroller</u> striped sumac leaf- roller	willow, poplar willow locust sumac	C C C C
<i>vetustella</i> (Dyar) <i>virgatella</i> Clem.	" "	" "	basswood micro moth locust micro moth	basswood locust	C C
<i>(Nepticula)</i> see <i>Stigmella</i> , <i>Ectoedemia</i>					
<i>Nepytia</i> <i>canosaria</i> (Wlk.)	Lepidoptera	Geometridae	<u>false hemlock looper</u>	coniferous	C
<i>Nerice</i> <i>bidentata</i> Wlk.	Lepidoptera	Notodontidae	prominent moth	elm	C
<i>Neuroterus</i> <i>saltarius</i> Weld. <i>umbilicatus</i> Bass.	Hymenoptera "	Cynipidae "	oak gall wasp " " "	oak "	C C
<i>Neurotoma</i> <i>fasciata</i> (Nort.)	Hymenoptera	Pamphiliidae	cherry web-spinning sawfly	cherry	C



<i>Neurotoma</i> <i>inconspicua</i> (Nort.)	Hymenoptera	Pamphiliidae	<u>plum web-spinning</u> <u>sawfly</u>	cherry	C
<i>Nites</i> <i>betulella</i> (Busck)	Lepidoptera	Oecophoridae	blackdotted birch leaf-tier	birch	C
<i>groteella</i> (Rob.)	"	"	hazel leaf-tier	hazel	C
<i>ostryella</i> (McD.)	"	"	ironwood leaf-tier	ironwood	C
<i>Nomius</i> <i>pygmaeus</i> (Dej.)	Coleoptera	Carabidae	<u>stink beetle</u>	predator	D
<i>Notodonta</i> <i>basitriens</i> Wlk.	Lepidoptera	Notodontidae	redmarked caterpillar	elm	C
<i>simplaria</i> Graef.	"	"	humped caterpillar	poplar, willow	C
<i>stragula</i> Grt.	"	"	" "	" "	C
<i>Nycteola</i> <i>cinereana</i> N. & D.	Lepidoptera	Nycteolidae	poplar leaf-tier	poplar	C
<i>frigidana</i> (Wlk.)	"	"	willow leaf-tier	willow	C
<i>Nyctobia</i> <i>limitaria</i> Wlk.	Lepidoptera	Geometridae	yellowlined conifer loopers	coniferous	C
<i>(Nygma) see Euproctis</i>					
<i>Nymphalis</i> <i>antiopa</i> (L.)	Lepidoptera	Nymphalidae	<u>mourningcloak</u> <u>butter-</u> <u>fly</u> , spiny elm caterpillar	deciduous	C
<i>j-album</i> Bdv. & Lec.	"	"	Compton tortoiseshell	"	C
<i>milberti</i> Godt.	"	"	Milbert's "	nettles	F

SCIENTIFIC NAME	ORDER	FAMILY	COMMON NAME	MAIN HOST PLANT(S) OR INSECT TYPE	IMPORTANCE RATING
<i>Oberea</i>					
<i>schaumi</i> Lec.	Coleoptera	Cerambycidae	poplar branch borer	poplar	C
<i>tripunctata</i> (Swed.)	"	"	<u>dogwood twig borer</u>	dogwood	C
<i>Obolodiplosis</i>					
<i>robiniae</i> (Hald.)	Diptera	Cecidomyiidae	locust gall midge	locust	C
<i>Obrussa</i>					
<i>ochrefasciella</i> (Cham.)	Lepidoptera	Nepticulidae	<u>hard maple budminer</u>	sugar maple	C
<i>sericopeza</i> (Zell.)	"	"	Norway maple seed- miner	Norway maple	C
<i>Ochropleura</i>					
<i>pecta</i> L.	Lepidoptera	Noctuidae	flameshouldered dart	clover	C
<i>Oenerostoma</i>					
<i>strobivorum</i> Free.	Lepidoptera	Yponomeutidae	white pine needle- miner	white pine	C
<i>Odontosia</i>					
<i>elegans</i> (Stkr.)	Lepidoptera	Notodontidae	aspen caterpillar	aspen	C
<i>Odontota</i>					
<i>dorsalis</i> (Thunb.)	Coleoptera	Chrysomelidae	<u>locust leafminer</u>	locust, deciduous	B
<i>Oidaematophorus</i> species	Lepidoptera	Pterophoridae	plume moths	ground plants	C
<i>Okanagana</i>					
<i>canadensis</i> (Prov.)	Homptera	Cicadidae	cicada	larva in soil	C
<i>rimosa</i> (Say)	"	"	"	" " "	C
<i>Olethreutes</i>					
<i>bipartitana</i> Clem.	Lepidoptera	Olethreutidae	micro moth	hazel	C

<i>Olethreutes</i>					
<i>cespitana</i> Hbn.	Lepidoptera	Olethreutidae	micro moth	aspen	C
<i>costimaculana</i> Fern.	"	"	labrador tea micro moth	labrador tea	C
<i>glaciana</i> Moesch.	"	"	micro moth	deciduous	C
<i>permundana</i> (Clem.)	"	"	<u>raspberry leafroller</u>	raspberry	C
<i>Oligia</i>					
<i>illocata</i> (Wlk.)	Lepidoptera	Noctuidae	owlet moth	deciduous	C
<i>Oligocentria</i>					
<i>lignicolor</i> Wlk.	Lepidoptera	Notodontidae	laceheaded cater- pillar	deciduous	C
<i>Oligonychus</i>					
<i>milleri</i> (McGregor)	Acarina	Tetranychidae	pine spider mite	pine	C
<i>ununguis</i> (Jac.)	"	"	<u>spruce spider mite</u>	spruce	B
<i>Oligotrophus</i> species	Diptera	Cecidomyiidae	gall or tip midges	juniper and others	C
<i>Oneida</i>					
<i>lunulalis</i> Hlst.	Lepidoptera	Pyralidae	micro moth	oak	C
<i>Operophtera</i>					
<i>bruceata</i> (Hlst.)	Lepidoptera	Geometridae	<u>Bruce spanworm</u>	sugar maple, aspen	B
<i>brumata</i> (Linn.)	"	"	<u>winter moth</u>	deciduous	E
<i>Ophioderma</i>					
<i>pubescens</i> Emm.	Homoptera	Membracidae	treehopper	deciduous	C
<i>Oreana</i>					
<i>unicolorella</i> Hlst.	Lepidoptera	Pyralidae	micro moth	deciduous	C
<i>Orgilus</i>					
<i>obscurator</i> (Nees)	Hymenoptera	Braconidae	parasite	parasite	D

SCIENTIFIC NAME	ORDER	FAMILY	COMMON NAME	MAIN HOST PLANT(S) OR INSECT TYPE	IMPORTANCE RATING
<i>Orgyia</i>					
<i>antiqua</i> (L.)	Lepidoptera	Lymantriidae	<u>rusty tussock moth</u>	general feeder	C
<i>leucostigma intermedia</i> Fitch	"	"	<u>white marked tussock</u> <u>moth</u>	" "	C
<i>Ormenis</i>					
<i>pruinosa</i> Say	Homoptera	Flatidae	planthopper	elm	C
<i>Orsodacne</i>					
<i>atra</i> ahr.	Coleoptera	Chrysomelidae	leaf beetle	willow catkins	C
<i>Orthodes</i>					
<i>cynica</i> Gn.	Lepidoptera	Noctuidae	cutworm	unknown	C
<i>Ortholepis</i>					
<i>pasadamia</i> (Dyar)	Lepidoptera	Pyralidae	striped birch pyralid	birch	C
<i>Orthosia</i>					
<i>hibisci</i> (Gn.)	Lepidoptera	Noctuidae	speckled green fruit- worm	deciduous	C
<i>revicta</i> (Morr.)	"	"	rusty whitesided caterpillar	"	C
<i>rubescens</i> (Wlk.)	"	"	owlet moth	"	C
<i>Orthosoma</i>					
<i>brunneum</i> (Forst.)	Coleoptera	Cerambycidae	longhorned beetle	dead wood	C
<i>Orthotomicus</i>					
<i>caelatus</i> (Eich.)	Coleoptera	Scolytidae	bark beetle	coniferous	C
<i>Osmoderma</i>					
<i>eremicola</i> Knoch.	Coleoptera	Scarabaeidae	scarab beetle	fruit trees	C
<i>scabra</i> Beauv.	"	"	" "	" "	C

<i>Otiorhynchus</i>					
<i>ovatus</i> (Linn.)	Coleoptera	Curculionidae	<u>strawberry rootweevil</u>	coniferous roots	A
<i>sulcatus</i> (F.)	"	"	<u>black vine weevil</u>	general feeder	C
<i>Pachypappa</i>					
<i>tremulae</i> (Linn.)	Homoptera	Aphididae	aspen aphid	aspen	C
<i>Pachypsylla</i>					
<i>celtidismamma</i> (Riley)	Homoptera	Psyllidae	<u>hackberry nipplegall</u>	hackberry	C
<i>globulus</i> Riley	"	"	<u>maker</u> hackberry leaf gall	"	C
<i>Pachysphinx</i>					
<i>modesta</i> (Harr.)	Lepidoptera	Sphingidae	big poplar sphinx	deciduous	C
<i>Packardia</i>					
<i>ceanothi</i> Dyar	Lepidoptera	Limacodidae	slug caterpillar	white birch	C
<i>elegans</i> Pack.	"	"	" "	chestnut, beech	C
<i>Paleacrita</i>					
<i>vernata</i> (Peck)	Lepidoptera	Geometridae	<u>spring cankerworm</u>	elm, sugar maple	C
<i>Palpita</i>					
<i>magniferalis</i> Wlk.	Lepidoptera	Pyralidae	ash leafroller	ash	C
<i>Palthis</i>					
<i>angulalis</i> (Hbn.)	Lepidoptera	Noctuidae	spruce harlequin	spruce	C
<i>Pamphilius</i>					
<i>ochreipes</i> (Cr.)	Hymenoptera	Pamphiliidae	viburnum webspinning sawfly	cranberry	C
<i>Pandemis</i>					
<i>canadana</i> Kft.	Lepidoptera	Tortricidae	green aspen leaftier	deciduous	C
<i>lamprosana</i> Rob.	"	"	leafroller	"	C
<i>limitata</i> (Rob.)	"	"	<u>threelined leafroller</u>	"	C

SCIENTIFIC NAME	ORDER	FAMILY	COMMON NAME	MAIN HOST PLANT(S) OR INSECT TYPE	IMPORTANCE RATING
<i>Panopoda</i>					
<i>carneicosta</i> Gn.	Lepidoptera	Noctuidae	owlet moth	deciduous	C
<i>rufimargo</i> (Hbn.)	"	"	" "	oak, beech	C
<i>Panthea</i>					
<i>acronyctoides</i> (Wlk.)	Lepidoptera	Noctuidae	tufted conifer caterpillar	coniferous	C
<i>furcilla</i> Pack.	"	"	tufted white pine caterpillar	"	C
<i>pallescens centralis</i> McD.	"	"	tufted pine cater- pillar	"	C
<i>Pantographa</i>					
<i>limata</i> G. & R.	Lepidoptera	Pyralidae	<u>basswood leafroller</u>	basswood, elm	C
<i>Paonias</i>					
<i>excaecatus</i> (J. E. Smith)	Lepidoptera	Sphingidae	blindegged sphinx	deciduous	C
<i>myops</i> (J. E. Smith)	"	"	smallegged sphinx	serviceberry	C
<i>Papaipema</i>					
<i>cataphracta</i> (Grt.)	Lepidoptera	Noctuidae	<u>burdock borer</u>	burdock	F
<i>frigida</i> (Sm.)	"	"	borer	meadow-rue, cone- flower	C
<i>Papilio</i>					
<i>crephontes</i> Cram.	Lepidoptera	Papilionidae	<u>orangedog</u>	deciduous	C
<i>glaucus</i> Linn.	"	"	<u>tiger swallowtail</u>	"	C
<i>glaucus canadensis</i> R. & J.	"	"	Canadian tiger swallowtail	"	C
<i>(philenor</i> Linn.) see <i>Battus</i>					
<i>polyxenes asterius</i> Stoll	"	"	<u>black swallowtail</u>	parsley, etc.	G
<i>troilus</i> Linn.	"	"	<u>spicebush swallowtail</u>	shrubs	C

<i>Paraclemensia acerifoliella</i> (Fitch)	Lepidoptera	Incurvariidae	<u>maple leafcutter</u>	maple	B
<i>Paradiplosis tumifex</i> Gagné	Diptera	Cecidomyiidae	<u>balsam gall midge</u>	balsam fir	B
<i>Paraleucoptera albella</i> (Cham.)	Lepidoptera	Lyonetiidae	cottonwood leafminer	poplar	C
<i>Parallelia bistriaris</i> Hbn.	Lepidoptera	Noctuidae	maple caterpillar	maple, birch	C
<i>Paralobesia piceana</i> Free.	Lepidoptera	Olethreutidae	spruce micro moth	spruce	C
<i>Paraphytomyza populicola</i> (Wlk.)	Diptera	Agromyzidae	Lombardy leafminer	poplar	C
<i>Paraprociophilus tessellatus</i> (Fitch)	Homoptera	Aphididae	<u>woolly alder aphid</u>	alder, maple	B
<i>(Parasemia)</i> see <i>Platarctia</i>					
<i>Parastichtis discivaria</i> (Wlk.)	Lepidoptera	Noctuidae	owlet moth	poplar	C
<i>Parcoblatta pennsylvanica</i> (DeG.)	Orthoptera	Blattidae	Pennsylvania wood cockroach	vegetable matter	F
<i>Parectopa robiniella</i> Clem.	Lepidoptera	Gracillariidae	locust digitate leafminer	locust	C
<i>(Pareophora)</i> see <i>Eupareophora</i>					
<i>(Parorgyia)</i> see <i>Dasychira</i>					
<i>Parornix conspicuellla</i> Dietz	Lepidoptera	Gracillariidae	birch micro moth	birch	C

SCIENTIFIC NAME	ORDER	FAMILY	COMMON NAME	MAIN HOST PLANT(S) OR INSECT TYPE	IMPORTANCE RATING
<i>Patelloa</i> <i>pachypyga</i> (A. & W.)	Diptera	Tachinidae	parasite	parasite	D
<i>Pemphyigus</i> <i>populicaulis</i> Fitch	Homoptera	Aphididae	poplar leaf petiole- gall aphid	poplar	C
<i>populitransversus</i> Riley	"	"	<u>poplar petiolegall</u> aphid	"	C
<i>Pemisetia</i> <i>marginata</i> (Harris)	Lepidoptera	Sesiidae	<u>raspberry crown borer</u>	raspberry	C
<i>Pentamerismus</i> <i>canadensis</i> MacG.	Acarina	Tenuipalpidae	false spider mite	cedar	C
<i>erythreus</i> (Ewing)	"	"	" " "	cedar, juniper	C
<i>Periclista</i> <i>albicollis</i> (Nort.)	Hymenoptera	Tenthredinidae	oak sawfly	oak	C
<i>diluta</i> (Cress)	"	"	" "	"	C
<i>media</i> (Nort.)	"	"	" "	"	C
<i>Peridea</i> <i>angulosa</i> (J. E. Smith)	Lepidoptera	Notodontidae	oak caterpillar	oak	C
<i>ferruginea</i> (Pack)	"	"	birch caterpillar	birch	C
<i>Peridroma</i> <i>saucia</i> (Hbn.)	Lepidoptera	Noctuidae	<u>variegated cutworm</u>	nursery, field and garden plants	C
<i>Perilampus</i> <i>hyalinus</i> Say	Hymenoptera	Perilampidae	parasite	parasite	D
<i>Periphyllus</i> <i>lyropictus</i> (Kessler)	Homoptera	Aphididae	<u>Norway maple aphid</u>	Norway maple	B



<i>Pero</i>					
<i>honestarius</i> Wlk.	Lepidoptera	Geometridae	looper	general feeder	C
<i>marmoratus</i> Grossb.	"	"	"	deciduous	C
<i>morrisonarius</i> Hy. Edw.	"	"	"	general feeder	C
<i>Petrova</i>					
<i>albicapitana</i> (Busck.)	Lepidoptera	Olethreutidae	<u>northern pitch twig</u> <u>moth</u>	jack pine	C
<i>comstockiana</i> (Fern.)	"	"	<u>pitch twig moth</u>	pitch pine	C
<i>gemistrigulana</i> Kft.	"	"	pine bark moth	pine	C
<i>wenzeli</i> Miller	"	"	pitch module moth	"	C
<i>Phaeoura</i>					
<i>quernaria</i> J.E. Smith	Lepidoptera	Geometridae	oak beauty	deciduous	C
<i>quernaria atrescens</i> Hlst.	"	"	" "	"	C
<i>Phalonia</i>					
<i>albidana</i> Wlk.	Lepidoptera	Phaloniidae	micro moth	deciduous	C
( <i>rutilana</i> Hbn.) see <i>Aethes</i>					
<i>straminoides</i> Grt.	"	"	basswood seed moth	basswood	C
<i>(Phenacaspis) see Chionaspis</i>					
<i>Pheosia</i>					
<i>rimosa</i> Pack.	Lepidoptera	Notodontidae	false hornworm	poplar, willow	C
<i>Phigalia</i>					
<i>olivacearia</i> Wlk.	Lepidoptera	Geometridae	looper	elm	C
<i>titea</i> Cram.	"	"	spiny looper	deciduous	C
<i>(Phlegethontius) see Manduca</i>					
<i>Phloeosinus</i>					
<i>canadensis</i> Sw.	Coleoptera	Scolytidae	northern cedar bark beetle	cedar	C

SCIENTIFIC NAME	ORDER	FAMILY	COMMON NAME	MAIN HOST PLANT(S) OR INSECT TYPE	IMPORTANCE RATING
<i>Phloeotribus</i>					
<i>liminarus</i> (Harr.)	Coleoptera	Scolytidae	<u>peach bark beetle</u>	cherry	C
<i>piceae</i> Sw.	"	"	spruce bark beetle	spruce	C
<i>Phlogophora</i>					
<i>iris</i> Gn.	Lepidoptera	Noctuidae	cutworm	unknown	C
<i>periculosa</i> Gn.	"	"	"	general feeder	C
<i>Phlyctaenia</i>					
<i>extricalis</i> (Gn.)	Lepidoptera	Pyralidae	alder leaftier	alder	C
<i>sambucalis</i> Schiff.	"	"	elderberry leaftier	elderberry	C
<i>Phobetron</i>					
<i>pitheciium</i> (J. E. Smith)	Lepidoptera	Limacodidae	<u>hag moth</u>	sugar maple	C
<i>Pholisora</i>					
<i>catullus</i> (Fab.)	Lepidoptera	Hesperiidae	common sooty wing	ground plants	F
<i>(Pholus)</i> see <i>Eumorpha</i>					
<i>Phragmatobia</i>					
<i>assimilans</i> Wlk.	Lepidoptera	Arctiidae	dusky red tiger moth	deciduous	C
<i>Phratora</i>					
<i>americana canadensis</i> Brown	Coleoptera	Chrysomelidae	American willow leaf beetle	willow	C
<i>frosti remissa</i> Brown	"	"	leaf beetle	"	C
<i>hudsonia</i> Brown	"	"	birch leaf beetle	birch	C
<i>purpurea purpurea</i> Brown	"	"	aspen skeletonizer	poplar	C
<i>Phyllobius</i>					
<i>oblongus</i> (Linn.)	Coleoptera	Curculionidae	European snout beetle	deciduous	C

<i>Phyllocnistis populiella</i> (Cham.)	Lepidoptera	Gracillariidae	poplar serpentine leafminer	poplar	C
<i>vitifoliella</i> Cham.	"	"	grape serpentine leafminer	grapevine	C
<i>Phyllocolpa agana</i> (Roh.)	Hymenoptera	Tenthredinidae	willow leaffolding sawfly	willow	C
<i>bozemani</i> (Cooley)	"	"	<u>poplar leaffolding sawfly</u>	poplar	C
<i>mariana</i> (Ross)	"	"	poplar leaffolding sawfly	"	C
<i>popuellus</i> (Ross)	"	"	poplar leaffolding sawfly	"	C
<i>populi</i> (Marl.)	"	"	poplar leafgall sawfly	"	C
<i>Phyllocoptes didelphis</i> Keifer	Acarina	Eriophyidae	poplar felt mite	poplar	C
<i>Phyllodesma americana</i> (Harr.)	Lepidoptera	Lasciocampidae	<u>lappet moth</u>	deciduous	C
<i>Phyllonorycter alnicolella</i> (Wlsh.)	Lepidoptera	Gracillariidae	alder leafblotch miner	alder	C
<i>argentifimbriella</i> (Clem.)	"	"	oak leafblotch miner	oak	C
<i>basistrigella</i> (Clem.)	"	"	oak leafblotch miner	"	C
<i>celtisella</i> (Cham.)	"	"	hackberry leafblotch miner	hackberry	C
<i>kenora</i> (Free)	"	"	willow leafblotch miner	willow	C

SCIENTIFIC NAME	ORDER	FAMILY	COMMON NAME	MAIN HOST PLANT(S) OR INSECT TYPE	IMPORTANCE RATING
<i>Phyllonorycter</i> <i>lucetiella</i> (Clem.)	Lepidoptera	Gracillariidae	basswood squareblotch miner	basswood	C
<i>lucidicostella</i> (Clem.)	"	"	lesser maple leaf- blotch minter	maple	C
<i>malimalifoliella</i> (Braun)	"	"	apple leafblotch miner	apple	C
<i>nipigon</i> (Free.)	"	"	balsam poplar leaf- blotch miner	balsam, poplar	B
<i>ontario</i> (Free.)	"	"	aspen leafblotch miner	aspen	B
<i>ostraeoliella</i> (Clem.)	"	"	ironwood leafblotch miner	ironwood	C
<i>propinquinella</i> (Braun)	"	"	cherry leafblotch miner	cherry	C
<i>robiniella</i> (Clem.)	"	"	locust leafblotch miner	locust	C
( <i>salicifoliella</i> Clem.) see spp. <i>kenora</i> , <i>nipigon</i> , and <i>ontario</i>					
<i>tiliacella</i> (Cham.)	"	"	basswood roundblotch miner	basswood	C
<i>Phyllophaga</i> <i>anxia</i> (Lec.)	Coleoptera	Scarabaeidae	common June beetle	soil insect	B
<i>drakei</i> Kby.	"	"	June beetle	" "	B
<i>fusca</i> (Froe.)	"	"	northern June beetle	" "	B
<i>futilis</i> (Lec.)	"	"	lesser June beetle	" "	B
<i>rugosa</i> (Melsh.)	"	"	rugose June beetle	" "	B
( <i>Phylloxera</i> ) see <i>Xerophylla</i>					
<i>Physokermes</i> <i>piceae</i> (Schr.)	Homoptera	Coccidae	<u>spruce bud scale</u>	spruce	C

(Phytomyza) see Paraphytomyza

<i>Phytobia</i> <i>pleuralis</i> (Mall.)	Diptera	Agromyzidae	catalpa leafminer	catalpa	C
<i>Phytocoptella</i> <i>abnormis</i> (Gar.)	Acarina	Eriophyidae	linden gall mite	basswood	C
<i>Pieris</i> <i>rapae</i> (Linn.)	Lepidoptera	Pieridae	<u>imported cabbageworm</u>	cabbage	G
<i>Pikonema</i> <i>alaskensis</i> (Roh.)	Hymenoptera	Tenthredinidae	<u>yellowheaded spruce sawfly</u>	spruce	A
<i>dimmockii</i> (Cress.)	"	"	<u>greenheaded spruce sawfly</u>	"	C
<i>Pineus</i> <i>floccus</i> (Patch)	Homoptera	Phylloxeridae (= Adelgidae)	redspruce adelgid	spruce	C
<i>pinifoliae</i> (Fitch)	"	"	pine leaf adelgid	spruce, pine	C
<i>similis</i> (Gill.)	"	"	ragged spruce gall adelgid	spruce	C
<i>strobi</i> (Htg.)	"	"	<u>pine bark adelgid</u>	pine	B
<i>Pissodes</i> <i>affinis</i> Rand.	Coleoptera	Curculionidae	bark weevil	pine, spruce	C
<i>approximatus</i> Hopk.	"	"	<u>northern pine weevil</u>	pine	B
<i>dubius</i> Rand.	"	"	balsam bark weevil	balsam fir, spruce	C
<i>similis</i> Hopk.	"	"	balsam fir weevil	balsam fir	C
<i>strobi</i> (Peck)	"	"	<u>white pine weevil</u>	pine, spruce	A
<i>Pityogenes</i> <i>hopkinsi</i> Sw.	Coleoptera	Scolytidae	bark beetle	pine	C
<i>plagiatus</i> LeC.	"	"	" "	pine, spruce	C

SCIENTIFIC NAME	ORDER	FAMILY	COMMON NAME	MAIN HOST PLANT(S) OR INSECT TYPE	IMPORTANCE RATING
<i>Pityokteines sparsus</i> (LeC.)	Coleoptera	Scolytidae	balsam fir bark beetle	balsam fir	C
<i>Pityophthorus cariniceps</i> LeC. (= <i>canadensis</i> Sw.)	Coleoptera	Scolytidae	bark beetle	coniferous	C
<i>consimilis</i> LeC.	"	"	bark beetle	coniferous	C
<i>lautus</i> Eich.	"	"	" "	"	C
<i>puberulus</i> LeC.	"	"	pith borer	"	C
<i>pulchellus</i> Eich.	"	"	pine bark borer	pine	C
<i>pulicarius</i> (Zimm.)	"	"	pine pith borer	"	C
<i>rhois</i> Sw.	"	"	sumac bark beetle	sumac	C
<i>Plagiodera versicolora</i> (Laich.)	Coleoptera	Chrysomelidae	<u>imported willow leaf beetle</u>	willow	B
<i>Plagiometriona clavata</i> F.	Coleoptera	Chrysomelidae	leaf beetle	basswood	C
<i>Plagodis alcoolaria</i> Gn.	Lepidoptera	Geometridae	birch looper	deciduous	C
<i>nigrescaria</i> Hlst.	"	"	looper	"	C
<i>phlogosaria</i> Gn.	"	"	"	"	C
<i>serinaria</i> H.-S.	"	"	"	"	C
<i>Platartia parthenos</i> (Harr.)	Lepidoptera	Arctiidae	giant tiger moth	deciduous	C
<i>Plathypena scabra</i> Fabr.	Lepidoptera	Noctuidae	<u>green cloverworm</u>	clover	G

<i>Platycerus</i> <i>marginalis</i> Csy.	Coleoptera	Lucanidae	stag beetle	coniferous	C
<i>Platynota</i> <i>idaeusalis</i> Wlk.	Lepidoptera	Tortricidae	leafroller	goldenrod, deciduous	C
<i>Platyperigea</i> <i>multifera</i> (Wlk.)	Lepidoptera	Noctuidae	rustic	unknown	C
<i>Platyptilia</i> <i>pallidactyla</i> Haw. <i>punctidactyla</i> Haw.	Lepidoptera	Pterophoridae	plume moth	unknown	C
<i>Platypolia</i> <i>anceps</i> (Steph.)	"	"	" "	"	C
<i>Plemyria</i> <i>georgii</i> Hlst.	Lepidoptera	Noctuidae	owlet moth	unknown	C
<i>Pleroneura</i> <i>brunneicornis</i> Roh. (= <i>borealis</i> Felt)	Lepidoptera	Geometridae	looper	deciduous	C
<i>Plodia</i> <i>interpunctella</i> (Hbn.)	Hymenoptera	Xyelidae	<u>balsam shootboring sawfly</u>	balsam fir	C
<i>Plusia</i> <i>balluca</i> (Geyer)	Lepidoptera	Pyrilidae	<u>Indian meal moth</u>	household	G
<i>Plutella</i> <i>xylostella</i> (Linn.) (= <i>maculipennis</i> Curt.)	Lepidoptera	Noctuidae	false looper	raspberry	F
<i>Poanes</i> <i>hobomok</i> (Harr.)	Lepidoptera	Plutellidae	<u>diamond back moth</u>	cabbage, etc.	G
	Lepidoptera	Hesperiidae	hobomok skipper	unknown	C

SCIENTIFIC NAME	ORDER	FAMILY	COMMON NAME	MAIN HOST PLANT(S) OR INSECT TYPE	IMPORTANCE RATING
<i>Podabrus</i>					
<i>diadema</i> F.	Coleoptera	Cantharidae	soldier beetle	predator	D
<i>modestus</i> Say	"	"	" "	"	D
<i>tomentosus</i> Say	"	"	" "	"	D
<i>Podapion</i>					
<i>gallicola</i> Riley	Coleoptera	Curculionidae	<u>pine gall weevil</u>	red pine	C
<i>Podisus</i>					
<i>maculiventris</i> (Say)	Hemiptera	Pentatomidae	<u>spined soldier bug</u>	predator	D
<i>modestus</i> Dall.	"	"	stink bug	"	D
<i>placidus</i> Uhl.	"	"	" "	"	D
<i>serieventris</i> Uhl.	"	"	" "	"	D
<i>Podosesia</i>					
<i>syringae</i> (Harr.) (= <i>fraxini</i> Lug.)	Lepidoptera	Sesiidae	<u>ash borer, lilac borer</u>	ash, lilac	C
<i>Polia</i>					
<i>adjuncta</i> (Bdv.)	Lepidoptera	Noctuidae	cutworm	deciduous	C
<i>assimilis</i> (Morr.)	"	"	"	"	C
<i>cratifera</i> (Wlk.)	"	"	"	general feeder	C
<i>detracta</i> (Wlk.)	"	"	"	deciduous	C
<i>grandis</i> (Bvd.)	"	"	"	willow, cherry	C
<i>imbrifera</i> (Gn.)	"	"	"	cherry	C
<i>ingravis</i> (Sm.)	"	"	"	deciduous	C
<i>latex</i> (Gn.)	"	"	"	birch	C
<i>legitima</i> (Grt.)	"	"	<u>striped garden caterpillar</u>	general feeder	C
<i>lilacina</i> (Harv.)	"	"	flax cutworm	field crops	G
<i>lutra</i> (Gn.)	"	"	cutworm	general feeder	C
<i>nevadae</i> (Grt.)	"	"	"	birch	C
<i>nimbosa</i> (Gn.)	"	"	"	deciduous	C
<i>obscura</i> (Sm.)	"	"	"	unknown	C



<i>Polia</i>						
<i>pulverulenta</i> (Sm.)	Lepidoptera	Noctuidae	cutworm	general feeder		C
<i>purpurissata</i> (Grt.)	"	"	"	willow		C
<i>radix</i> (Wlk.)	"	"	"	birch, alder		C
<i>tacoma</i> (Stkr.)	"	"	"	cherry, birch		C
<i>Polites</i>						
<i>mystic</i> (Scud.)	Lepidoptera	Hesperiidae	long dash	grasses		F
<i>Polydrusus</i>						
<i>impressifrons</i> Gyll.	Coleoptera	Curculionidae	pale green weevil	deciduous		C
<i>Polygonia</i>						
<i>comma</i> Harr.	Lepidoptera	Nymphalidae	hop merchant	deciduous		C
<i>faunus</i> (Edw.)	"	"	green comma	"		C
<i>interrogationis</i> (Fabr.)	"	"	question mark	"		C
<i>progne</i> Cram.	"	"	gray comma	"		C
<i>Polygraphus</i>						
<i>rufipennis</i> (Kby.)	Coleoptera	Scolytidae	four-eyed spruce bark beetle	spruce		C
<i>Pontania</i>						
<i>proxima</i> (Lep.)	Hymenoptera	Tenthredinidae	<u>willow redgall sawfly</u>	willow		C
<i>resinicola</i> Marl.	"	"	<u>willow leafgall sawfly</u>	"		C
<i>s-pomum</i> (Walsh) (= <i>hospes</i> Walsh)	"	"	<u>willow applegall sawfly</u>	"		C
<i>Popillia</i>						
<i>japonica</i> Newman	Coleoptera	Scarabaeidae	<u>Japanese beetle</u>	general feeder		C
<i>(Porthetria) see Lymantria</i>						
<i>Prionoxystus</i>						
<i>macmurtrei</i> (Guer.)	Lepidoptera	Cossidae	<u>little carpenterworm</u>	deciduous		C
<i>robiniae</i> (Peck)	"	"	<u>carpenterworm</u>	"		C

SCIENTIFIC NAME	ORDER	FAMILY	COMMON NAME	MAIN HOST PLANT(S) OR INSECT TYPE	IMPORTANCE RATING
<i>Priophorus</i>					
<i>betulae</i> Roh.	Hymenoptera	Tenthredinidae	birch sawfly	birch	C
<i>infuscatus</i> (MacG.)	"	"	willow sawfly	willow	C
<i>Pristiphora</i>					
<i>acidovalva</i> Wong	"	"	willow sawfly	willow	C
<i>cadma</i> W. & R.	"	"	birch sawfly	birch	C
<i>erichsonii</i> (Htg.)	"	"	<u>larch sawfly</u>	larch	A
<i>geniculata</i> (Htg.)	"	"	<u>mountain-ash sawfly</u>	mountain-ash	A
<i>lena</i> Kinc.	"	"	little spruce sawfly	spruce	C
<i>leucostoma</i> (Lindq.)	"	"	willow sawfly	willow	C
<i>Prochoerodes</i>					
<i>transversata</i> Dru.	Lepidoptera	Geometridae	large maple looper	deciduous	C
( <i>Prociphilus</i> ) see <i>Paraprociphilus</i> and <i>Fagiphagus</i>					
<i>Prodiplosis</i>					
<i>morrisi</i> Gagné	Diptera	Cecidomyidae	leaf curl midge	poplar	B
<i>Profemusa</i>					
<i>canadensis</i> (Marl.)	Hymenoptera	Tenthredinidae	hawthorn leafmining sawfly	hawthorn	C
<i>lucifex</i> (Ross)	"	"	oak leafmining sawfly	oak	B
<i>thomsoni</i> (Konow)	"	"	ambermarked birch leafminer	birch	B
<i>Proleucoptera</i>					
( <i>albella</i> Cham.) see <i>Paraleucoptera</i> <i>smilaciella</i> Busck.	Lepidoptera	Lyonetiidae	greenbrier leafminer	greenbrier	C

<i>Prolimacodes badia</i> Hbn.	Lepidoptera	Limacodidae	slug caterpillar	deciduous	C
<i>Proserpinus flavofasciata</i> (Wlk.)	Lepidoptera	Sphingidae	yellow-banded day sphinx	ground plants	C
<i>Prosimulium mixtum</i> S. and D.	Diptera	Simuliidae	black fly	biting insect	F
<i>Protagrotis niveivenosa</i> (Grt.)	Lepidoptera	Noctuidae	owlet moth	unknown	C
<i>Proteoteras aesculana</i> Riley	Lepidoptera	Olethreutidae	maple twig borer	maple	C
<i>moffatiana</i> Fern.	"	"	maple shoot borer	maple	C
<i>willingana</i> (Kft.)	"	"	<u>boxelder twig borer</u>	Manitoba maple	C
<i>Protheca puberula</i> Lec.	Coleoptera	Anobiidae	deathwatch beetle	dry wood	F
<i>Protitame virginalis</i> Hlst.	Lepidoptera	Geometridae	poplar looper	deciduous	C
<i>Protoboarmia porcelaria indicataria</i> Wlk.	Lepidoptera	Geometridae	dashlined looper	coniferous	C
<i>Protolachnus agilis</i> (Kltb.)	Homoptera	Aphididae	spotted pine needle aphid	pine	C
<i>Protolampra rufipectus</i> (Morr.)	Lepidoptera	Noctuidae	owlet moth	deciduous	C
<i>Protorthodes oviduca</i> (Gn.)	Lepidoptera	Noctuidae	owlet moth	ground plants	F

SCIENTIFIC NAME	ORDER	FAMILY	COMMON NAME	MAIN HOST PLANT(S) OR INSECT TYPE	IMPORTANCE RATING
<i>Proxenus miranda</i> (Grt.)	Lepidoptera	Noctuidae	dandelion cutworm	dandelion	F
<i>Pseudaletia unipuncta</i> (Haw.)	Lepidoptera	Noctuidae	<u>armyworm</u>	general feeder	C
<i>Pseudexentera costomaculana</i> Clem.	Lepidoptera	Olethreutidae	witch hazel leaf- roller	witch hazel	C
<i>cressoniana</i> Clem.	"	"	oak olethreutid leafroller	oak	C
<i>mali</i> Free.	"	"	pale apple leafroller	apple	C
<i>oregonana</i> Wlshm.	"	"	aspen leafroller	poplar	A
<i>Pseudocheilaria walsinghami</i> Dietz.	Lepidoptera	Gelechiidae	sumac micro moth	sumac	C
<i>Pseudolucanus placidus</i> (Say)	Coleoptera	Lucanidae	stag beetle	decayed wood	F
<i>Pseudorthodes vecors</i> (Gn.)	Lepidoptera	Noctuidae	cutworm	ground plants	F
<i>Pseudothyatira cymatophoroides</i> Gn.	Lepidoptera	Thyatiridae	birch-and-alder caterpillar	birch, alder	C
<i>cymatophoroides expultrix</i> Grt.	"	"	birch caterpillar	birch	C
<i>Psilocorsis cryptolechiella</i> (Cham) (= <i>faginella</i> Cham.)	Lepidoptera	Oecophoridae	twoleaf tier	oak, others	C
<i>quercicella</i> Clem.	"	"	oak leaftier	" "	C
<i>reflexella</i> Clem. (= <i>fletcherella</i> Gibs.)	"	"	twoleaf tier	oak, others	C

<i>Psyche</i> <i>casta</i> (Pall.)	Lepidoptera	Psychidae	bagworm	deciduous	C
<i>Psylla</i> <i>floccosa</i> (Patch)	Homoptera	Psyllidae	false woolly alder aphid	alder	C
<i>negundinis</i> Mally	"	"	<u>boxelder psyllid</u>	Manitoba maple	C
<i>striata</i> Patch	"	"	birch psyllid	birch	C
<i>Psyllobora</i> <i>viginti-maculata</i> (Say)	Coleoptera	Coccinellidae	lady beetle	predator	D
<i>Pterocomma</i> <i>populifoliae</i> (Fitch)	Homoptera	Aphididae	poplar aphid	poplar	C
<i>smithiae</i> (Monell)	"	"	black willow aphid	poplar, willow	C
<i>Pteronarcys</i> <i>dorsata</i> Say	Plecoptera	Pteronarcidae	stone fly	aquatic insect	F
<i>Pterophorus</i> <i>periscelidactylus</i> Fitch	Lepidoptera	Pterophoridae	<u>grape plume moth</u>	grapevine	C
<i>Pterostichus</i> <i>mutus</i> Say	Coleoptera	Carabidae	ground beetle	predator	D
<i>Ptilinus</i> <i>ruficornis</i> Say	Coleoptera	Anobiidae	deathwatch beetle	dry wood	F
<i>Pulicalvaria</i> <i>abietisella</i> (Pack.)	Lepidoptera	Gelechiidae	green hemlock needle- miner	hemlock	C
<i>carbonaria</i> Free.	"	"	juniper needleminer	juniper	C
<i>coniferella</i> (Kft.)	"	"	pine needleminer	pine	C
<i>gibsonella</i> (Kft.)	"	"	juniper needleminer	juniper	C
<i>laricis</i> Free.	"	"	orange larch tube- maker	larch	C
<i>macleodi</i> Free.	"	"	brown hemlock needleminer	hemlock	C

SCIENTIFIC NAME	ORDER	FAMILY	COMMON NAME	MAIN HOST PLANT(S) OR INSECT TYPE	IMPORTANCE RATING
<i>Pulicalvaria</i>					
<i>martini</i> Free.	Lepidoptera	Gelechiidae	spruce needleminer	spruce	C
<i>piceaella</i> (Kft.)	"	"	orange spruce needleminer	"	C
<i>thujaella</i> (Kft.)	"	"	brown cedar leafminer	cedar	B
<i>Pulvinaria</i>					
<i>innumerabilis</i> (Rath.)	Homoptera	Coccidae	<u>cottony maple scale</u>	maple	C
<i>Pyraetomena</i>					
<i>borealis</i> Rand.	Coleoptera	Lampyridae	firefly	predator	D
<i>Pyrausta</i>					
<i>futilalis</i> Led.	Lepidoptera	Pyralidae	dogbane micro moth	dogbane	C
<i>Pyrrhalta</i>					
<i>alni</i> (Fall.)	Coleoptera	Chrysomelidae	brown alder leaf beetle	alder	C
<i>cavicornis</i> (LeC.)	"	"	<u>cherry leaf beetle</u>	cherry	C
<i>decora decorata</i> (Say)	"	"	<u>gray willow leaf beetle</u>	willow	B
<i>luteola</i> (Mull.)	"	"	<u>elm leaf beetle</u>	elm	C
<i>nymphaeae</i> (Linn.)	"	"	<u>waterlily leaf beetle</u>	water lily	F
<i>perplexa</i> (Fall.)	"	"	brown willow leaf beetle	willow	C
<i>spiraeae</i> (Fall.)	"	"	meadowsweet leaf beetle	meadow sweet	F
<i>tuberculata</i> (Say)	"	"	willow leaf beetle	willow	C
<i>Pyrrharctia</i> or <i>Isia</i>					
<i>isabella</i> (J. E. Smith)	Lepidoptera	Arctiidae	<u>banded woolly bear</u>	ground plants	F
<i>Pyrrhia</i>					
<i>exprimens</i> (Wlk.)	Lepidoptera	Noctuidae	variable caterpillar	deciduous	B
<i>umbra</i> (Hufn.)	"	"	rose budworm	rose	C

<i>Raphia frater</i> Grt.	Lepidoptera	Noctuidae	yellowmarked caterpillar	aspen	C
<i>Recurvaria robinella</i> Fitch	Lepidoptera	Gelechiidae	locust leaftier	locust	C
<i>Reticulitermes flavipes</i> (Kol.)	Isoptera	Rhinotermitidae	<u>eastern subterranean termite</u>	dry wood	F
<i>Rhabdophaga normaniana</i> Felt	Diptera	Cecidomyiidae	willow cabbagegall midge	willow	C
<i>plicata</i> Felt	"	"	willow gall midge	"	C
<i>rosacea</i> Felt	"	"	rosette midge	rose	C
<i>salicis</i> (Schr.)	"	"	willow twiggall midge	willow	C
<i>salicisbatatas</i> (O. & S.) (= <i>batatas</i> Walsh)	"	"	willow potatogall midge	"	C
<i>salicisbrassicoides</i> Pack.	"	"	willow cabbagegall midge	willow	C
<i>salicisnodulus</i> (O.S.)	"	"	willow nodulegall midge	"	C
<i>strobiloides</i> (O.S.)	"	"	willow pine cone gall midge	"	C
<i>swainei</i> Felt	"	"	<u>spruce bud midge</u>	spruce	C
<i>Rhagium inquisitor</i> (L.)	Coleoptera	Cerambycidae	longhorned beetle	deadwood	F
<i>Rheumaptera hastata</i> (Linn.)	Lepidoptera	Geometridae	spearmarked black moth	birch, alder, etc.	B
<i>subhastata</i> (Nolcken)	"	"	spearmarked black moth	birch, alder, etc.	C
<i>Rhyacionia adana</i> Heinr.	Lepidoptera	Olethreutidae	pine tip moth	pine	B

SCIENTIFIC NAME	ORDER	FAMILY	COMMON NAME	MAIN HOST PLANT(S) OR INSECT TYPE	IMPORTANCE RATING
<i>Rhyacionia</i>					
<i>buoliana</i> (Schiff.)	Lepidoptera	Olethreutidae	<u>European pine shoot</u> <u>moth</u>	pine	A
<i>busckana</i> Heinr.	"	"	red jack pine shoot borer	jack pine	C
<i>frustrana</i> Comst. (not Cdn. see <i>R. sonia</i> )	"	"	<u>Nantucket pine tip</u> <u>moth</u>	" "	E
<i>rigidana</i> (Fernald)	"	"	<u>pitch pine tip moth</u>	pitch pine	E
<i>sonia</i> Miller	"	"	yellow jack pine shoot borer	jack pine	C
<i>Rhynchaenus</i> (leaf miners)					
<i>canus</i> Horn	Coleoptera	Curculionidae	birch flea weevil	birch	C
<i>ephippiatus</i> Say	"	"	poplar flea weevil	poplar, willow	C
<i>pallidior</i> (Leng)	"	"	alder flea weevil	alder	C
<i>rufipes</i> (Lec.)	"	"	<u>willow flea weevil</u>	willow	C
<i>subhirtus</i> Horn	"	"	poplar flea weevil	poplar	C
<i>uniformis</i> (Brown)	"	"	serviceberry flea weevil	serviceberry	C
<i>Salebriaria</i>					
<i>engeli</i> Dyar	Lepidoptera	Pyralidae	oak leaftier	oak	C
<i>Saperda</i>					
<i>calcarata</i> Say	Coleoptera	Cerambycidae	<u>poplar borer</u>	poplar	C
<i>candida</i> F.	"	"	<u>roundheaded apple-</u> <u>tree borer</u>	apple tree	C
( <i>inornata</i> Say) see <i>Mecas</i>					
<i>obliqua</i> Say	"	"	alder stem borer	alder	C
<i>tridentata</i> Oliv.	"	"	<u>elm borer</u>	elm	C
<i>vestita</i> Say	"	"	<u>linden borer</u>	basswood	C
<i>Sarbena</i>					
<i>minuscula</i> Zell.	Lepidoptera	Nolidae	oak caterpillar	white oak	C



<i>Sarcophaga aldrichi</i> Park.	Diptera	Sarcophagidae	parasite	parasite	D
<i>Schizolachnum piniradiatae</i> (Dav.)	Homoptera	Aphididae	woolly pine needle aphid	red pine	C
<i>Schizura concinna</i> (J. E. Smith)	Lepidoptera	Notodontidae	<u>redhumped cater- pillar</u>	deciduous	C
<i>ipomoeae</i> Dbldy.	"	"	humped caterpillar	"	C
<i>leptinoides</i> Grt.	"	"	" "	"	C
<i>semirufescens</i> Wlk.	"	"	" "	"	C
<i>unicornis</i> (J. E. Smith)	"	"	<u>unicorn caterpillar</u>	"	C
<i>Schreckensteinia erythriella</i> Clem.	Lepidoptera	Heliodinidae	sumac micro moth	sumac	C
<i>Sciaphila duplex</i> Wlsh. m.	Lepidoptera	Olethreutidae	spotted aspen leaf- roller	poplar	B
<i>duplex thallasana</i> McD.	"	"	spotted aspen leaf- roller	"	C
<i>Sciaphilus asperatus</i> Bonsd.	Coleoptera	Curculionidae	weevil	unknown	C
<i>Scirtes orbiculatus</i> Fab.	Coleoptera	Helodidae	marsh beetle	unknown	C
<i>tibialis</i> Guer.	"	"	" "	"	C
<i>Scoliopteryx libatrix</i> (Linn.)	Lepidoptera	Noctuidae	willow scalloped owlet	willow	C
<i>Scolytus mali</i> (Bechst.)	Coleoptera	Scolytidae	<u>larger shothole borer</u>	bark beetle	C

SCIENTIFIC NAME	ORDER	FAMILY	COMMON NAME	MAIN HOST PLANT(S) OR INSECT TYPE	IMPORTANCE RATING
<i>Scolytus</i> <i>multistriatus</i> (Marsh.)	Coleoptera	Scolytidae	<u>smaller European elm</u> <u>bark beetle</u>	elm	A
<i>piceae</i> (Sw.)	"	"	spruce bark beetle	spruce	C
<i>quadrispinosus</i> Say	"	"	<u>hickory bark beetle</u>	hickory	C
<i>rugulosus</i> (Ratz.)	"	"	<u>shothole borer</u>	fruit trees	C
<i>Scythropus</i> <i>elegans</i> Couper	Coleoptera	Curculionidae	elegant pine weevil	pine	C
<i>Selenia</i> <i>alciphearia</i> Wlk.	Lepidoptera	Geometridae	loopers	deciduous	C
<i>Semanotus</i> <i>ligneus</i> (Fab.)	Coleoptera	Cerambycidae	<u>cedartree borer</u>	cedar, juniper	C
<i>Semioscopis</i> <i>aurorella</i> Dyar	Lepidoptera	Oecophoridae	micro moth	cherry	C
<i>inornata</i> Wlsh.	"	"	poplar micro moth	poplar	C
<i>Semiothisa</i> <i>aemulataria</i> (Wlk.)	Lepidoptera	Geometridae	deciduous tree loopers	deciduous	C
<i>banksianae</i> Ferg.	"	"	jack pine looper	jack pine	C
<i>bicolorata</i> (Fabr.)	"	"	" " "	hard pines	C
<i>bisignata</i> (Wlk.)	"	"	white pine looper	white pine	C
<i>fissinotata</i> (Wlk.)	"	"	lesser hemlock loopers	hemlock	C
<i>mellistrigata</i> (Grt.)	"	"	willow looper	willow	C
<i>minorata</i> (Pack.)	"	"	white pine looper	pine	C
<i>neptaria</i> (Gn.)	"	"	willow-poplar loopers	willow, poplar	C
<i>ocellinata</i> (Gn.)	"	"	locust looper	locust	C

<i>Semiothisa</i>						
<i>orillata</i> (Wlk.)	Lepidoptera	Geometridae	cedar looper	cedar	C	
<i>oweni</i> (Swett)	"	"	larch looper	larch	C	
<i>pinistrobata</i> Ferg.	"	"	white pine looper	white pine	C	
<i>sexmaculata</i> (Pack.)	"	"	larch looper	larch	C	
<i>signaria dispuncta</i> (Wlk.)	"	"	spruce-fir looper	coniferous	C	
<i>submarmorata</i> (Wlk.)	"	"	larch looper	larch	C	
<i>transitaria</i> (Wlk.)	"	"	pine looper	jack pine, red pine	C	
<i>ulsterata</i> (Pears.)	"	"	deciduous tree looper	deciduous	C	
<i>Sereda</i>						
<i>lautana</i> Clem.	Lepidoptera	Olethreutidae	micro moth	oak	C	
<i>Serica</i>						
<i>atricapilla</i> Kby.	Coleoptera	Scarabaeidae	scarab beetle	deciduous	C	
<i>sericea</i> Ill.	"	"	" "	"	C	
<i>tristis</i> Lec.	"	"	" "	"	C	
<i>vespertina</i> (Gyll.)	"	"	" "	"	C	
<i>Sericothrips</i>						
<i>tiliae</i> Hood	Thysanoptera	Thripidae	basswood thrips	basswood	C	
<i>Septoopus</i>						
<i>jonesi</i> (Keifer)	Acarina	Eriophyidae	red pine needle mite	red pine	C	
<i>strobacicus</i> Keifer	"	"	pine needle mite	white and red pine	C	
<i>Sialis</i>						
<i>infumata</i> Newm.	Neuroptera	Sialidae	alderfly	aquatic insect	F	
<i>Sicya</i>						
<i>macularia</i> Harr.	Lepidoptera	Geometridae	twopronged looper	deciduous	C	
<i>Sideridis</i>						
<i>rosea</i> (Harv.)	Lepidoptera	Noctuidae	owlet moth	deciduous	C	

SCIENTIFIC NAME	ORDER	FAMILY	COMMON NAME	MAIN HOST PLANT(S) OR INSECT TYPE	IMPORTANCE RATING
<i>Simyra</i> <i>henrici</i> (Grt.)	Lepidoptera	Noctuidae	owlet moth	ground plants	C
<i>Simulium</i> <i>venustum</i> Say	Diptera	Simuliidae	black fly	biting insect	F
<i>Sinea</i> <i>diadema</i> (Fab.)	Hemiptera	Reduviidae	<u>spined assassin bug</u>	predator	D
<i>Sisyrosea</i> <i>textula</i> H.-S.	Lepidoptera	Limacodidae	slug caterpillar	white oak	C
<i>Smerinthus</i> <i>cerisyi</i> Kby.	Lepidoptera	Sphingidae	poplar-and-willow hornworm	poplar, willow	C
<i>jamaicensis</i> (Dru.)	"	"	twin-spot sphinx	willow, poplar	C
<i>Solenobia</i> <i>walshella</i> Clem.	Lepidoptera	Psychidae	bagworm	coniferous	C
<i>Somatochlora</i> sp.	Odonata	Libellulidae	dragon fly	predator	D
<i>Spaelotis</i> <i>clandestina</i> (Harr.)	Lepidoptera	Noctuidae	<u>w-marked cutworm</u>	general feeder	C
<i>Spargania</i> <i>luctuata obductata</i> Moesch	Lepidoptera	Geometridae	loopers	unknown	C
<i>magnoliata</i> Gn.	"	"	"	white spruce	C
<i>Sparganothis</i> <i>diluticostana</i> Wlshm.	Lepidoptera	Tortricidae	leafroller	unknown	C
<i>directana</i> Wlk.	"	"	chokecherry leaf- roller	chokecherry	C
<i>flavibasana</i> Fern.	"	"	leafroller	ground plants	F
<i>niveana</i> Wlshm.	"	"	"	ironwood, maple	C

<i>Sparganothis</i>					
<i>putmanana</i> Free.	Lepidoptera	Tortricidae	leafroller	basswood	C
<i>reticulatana</i> Clem.	"	"	"	deciduous	C
<i>sulfureana</i> Clem.	"	"	needletier	general feeder	C
<i>tristriata</i> Kft.	"	"	"	" "	C
<i>unifasciana</i> Clem.	"	"	"	pine, spruce	C
<i>Sphinx</i>					
<i>canadensis</i> Bdv.	Lepidoptera	Sphingidae	northern ash sphinx	ash	C
<i>chersis</i> (Hbn.)	"	"	<u>great ash sphinx</u>	deciduous	C
<i>drupiferarum</i> J. E. Smith	"	"	wild-cherry sphinx	fruit trees	C
<i>gordius</i> Cram.	"	"	apple sphinx	larch, apple	C
<i>kalmiae</i> J. E. Smith	"	"	laurel sphinx	deciduous	C
<i>luscitiosa</i> Clem.	"	"	poplar-and-willow sphinx	poplar, willow, birch	C
<i>Silonota</i>					
<i>lariciana</i> Heinr.	Lepidoptera	Olethreutidae	larch needletier	larch	C
<i>ocellana</i> (D. & S.)	"	"	<u>eyespotted bud moth</u>	fruit trees	C
<i>Stenoma</i>					
<i>algidella</i> Wlk.	Lepidoptera	Stenomidae	micro moth	deciduous	C
<i>schlaegeri</i> (Zell.)	"	"	" "	birch	C
<i>Sterictiphora</i>					
<i>sericea</i> (Nort.)	Hymenoptera	Argidae	hawthorn sawfly	hawthorn	C
<i>(Sternochetus)</i> see <i>Cryptorhynchus</i>					
<i>Sthenopsis</i>					
<i>argenteomaculatus</i> (Harr.)	Lepidoptera	Hepialidae	alder rootborer	alder	C
<i>purpurascens</i> Pack.	"	"	rootborer	roots	C
<i>quadriguttatus</i> Grt.	"	"	poplar-and-willow rootborer	poplar, willow	C

SCIENTIFIC NAME	ORDER	FAMILY	COMMON NAME	MAIN HOST PLANT(S) OR INSECT TYPE	IMPORTANCE RATING
<i>Stigmella</i>					
<i>castaneaeoliella</i> (Cham.)	Lepidoptera	Nepticulidae	chestnut leafminer	chestnut	C
<i>latifasciella</i> (Cham.) (= <i>macrocarpae</i> Free.)	"	"	oak serpentine leaf- miner	oak	C
<i>Stilbosis</i>					
<i>ostryaella</i> (Cham.)	Lepidoptera	Cosmopterygidae	ironwood leafminer	ironwood	C
( <i>Stilpnotia</i> ) see <i>Leucoma</i>					
<i>Stretchia</i>					
<i>plusiaeformis</i> Edw.	Lepidoptera	Noctuidae	owlet moth	currant	F
<i>Strongylogaster</i>					
<i>multicincta</i> Nort.	Hymenoptera	Tenthredinidae	sawfly	brackern	F
<i>Strymon</i>					
<i>caryaevorus</i> McD.	Lepidoptera	Lycaenidae	hickory hairstreak	hickory	C
<i>falacer</i> Godt.	"	"	banded hairstreak	oak, walnut	C
<i>liparops strigosa</i> Harr.	"	"	striped hairstreak	deciduous	C
<i>Sunira</i>					
<i>bicolorago</i> (Gn.)	Lepidoptera	Noctuidae	owlet moth	ground plants, and possibly tree seeds	F
<i>Swammerdamia</i>					
<i>cuprescens</i> Braun	Lepidoptera	Yponomeutidae	birch micro moth	birch	C
<i>heroldella</i> Hbn.	"	"	" " "	"	C
<i>pyrella</i> Dev.	"	"	cherry micro moth	cherry	C
<i>Symmerista</i>					
<i>canicosta</i> Francl.	Lepidoptera	Notodontidae	redhumped oakworm	oak	C
<i>leucitys</i> Francl.	"	"	<u>orangehumped maple-</u> <u>worm</u>	maple	C

<i>Symydobius</i> <i>americanus</i> (Baker)	Homoptera	Aphididae	dark birch aphid	birch	C
<i>Synanthedon</i> <i>acerni</i> (Clem.)	Lepidoptera	Sesiidae	<u>maple callus borer</u>	maple	C
<i>bolteri</i> (Hy. Edw.)	"	"	<u>willow borer</u>	willow	C
<i>exitiosa</i> (Say)	"	"	<u>peachtree borer</u>	fruit trees	C
<i>pictipes</i> (G. & R.)	"	"	<u>lesser peachtree</u> <u>borer</u>	deciduous	C
<i>pini</i> (Kell.)	"	"	<u>pitch mass borer</u>	pine, spruce	C
<i>tipuliformis</i> (Clerck)	"	"	<u>currant borer</u>	currant	C
<i>Syndemis</i> <i>afflictana</i> Wlk.	Lepidoptera	Tortricidae	micro moth	general feeder	C
<i>Synchlora</i> <i>aerata</i> Fabr.	Lepidoptera	Geometridae	camouflaged looper	sweetfern	F
<i>rubrifrontaria</i> Pack.	"	"	" "	birch	C
<i>Syneta</i> <i>ferruginea</i> (Germ.)	Coleoptera	Chrysomelidae	rusty leaf beetle	deciduous	C
<i>Syngrapha</i> <i>alias</i> (Ottol.)	Lepidoptera	Noctuidae	spruce false looper	coniferous	C
<i>epigaea</i> (Grt.)	"	"	blueberry false looper	blueberry	F
<i>octoscripta</i> (Grt.)	"	"	false looper	unknown	C
<i>rectangula</i> (Kby.)	"	"	balsam fir false looper	coniferous	C
<i>selecta</i> (Wlk.)	"	"	spruce false looper	"	C
<i>Syrphus</i> <i>rectus</i> O.S.	Diptera	Syrphidae	hover fly	predator	D
<i>Tacparia</i> <i>detersata</i> Gn.	Lepidoptera	Geometridae	leaping looper	alder	C

SCIENTIFIC NAME	ORDER	FAMILY	COMMON NAME	MAIN HOST PLANT(S) OR INSECT TYPE	IMPORTANCE RATING
<i>Taenioglyptes fraseri</i> (Hopk.)	Coleoptera	Scolytidae	bark beetle	white spruce	C
<i>(Taniva)</i> see <i>Endothenia</i>					
<i>Tarachidia candefacta</i> (Hbn.)	Lepidoptera	Noctuidae	ragweed false looper	ragweed	F
<i>erastriodes</i> (Gn.)	"	"	" " "	"	F
<i>Telamona tiliae</i> Ball	Homoptera	Membracidae	treehopper	deciduous	C
<i>tremulata</i> Ball	"	"	aspen treehopper	aspen	C
<i>Telphusa belangerella</i> Cham.	Lepidoptera	Gelechiidae	alder leafroller	alder	C
<i>longifasciella</i> Clem.	"	"	sumac micro moth	sumac	C
<i>querciella</i> Cham.	"	"	oak leafroller	white oak	C
<i>Tethida cordigera</i> (Beauv.)	Hymenoptera	Tenthredinidae	<u>blackheaded ash sawfly</u>	ash	C
<i>Tetracis cachexiata</i> Gn.	Lepidoptera	Geometridae	loopers	general feeder	C
<i>crocallata</i> Gn.	"	"	"	willow	C
<i>Tetralopha aplastella</i> (Hlst.)	Lepidoptera	Pyralidae	aspen webworm	aspen, birch	C
<i>asperatella</i> (Clem.)	"	"	maple webworm	maple	C
<i>expandens</i> (Wlk.)	"	"	striped oak webworm	oak	C
<i>maritimalis</i> McD.	"	"	larch webworm	larch, spruce	C
<i>militella</i> Zell.	"	"	sycamore webworm	sycamore	C
<i>robustella</i> Zell.	"	"	<u>pine webworm</u>	pine	C
<i>vaccinivora</i> Munroe	"	"	blueberry webworm	blueberry	C



<i>Tetropium</i> <i>cinnamopterum</i> Kby.	Coleoptera	Cerambycidae	longhorned beetle	spruce, pine	C
<i>Tetyra</i> <i>bipunctata</i> H.-S.	Hemiptera	Pentatomidae	<u>shieldbacked pine</u> <u>seedbug</u>	pine seed	C
<i>Thanasimus</i> <i>dubius</i> F.	Coleoptera	Cleridae	checkered beetle	predator	D
<i>Thecabuius</i> <i>affinis</i> (Kalt.)	Homoptera	Aphididae	purse leaf gall aphid	poplar	C
<i>Thecodiplosis</i> <i>liriodendri</i> (O.S.) <i>piniresinosae</i> Kearby	Diptera "	Cecidomyiidae "	tulip spotgall midge red pine needle midge	tulip, poplar red pine	C C
<i>Thera</i> <i>contractata</i> Pack. <i>juniperata</i> L.	Lepidoptera "	Geometridae "	juniper looper " "	juniper "	C C
<i>Thymelicus</i> <i>lineola</i> (Ochs.)	Lepidoptera	Hesperiidae	European skipper	timothy	G
<i>Thyridopteryx</i> <i>ephemeraeformis</i> (Haw.)	Lepidoptera	Psychidae	<u>bagworm</u>	coniferous	C
<i>Tibicen</i> <i>canicularis</i> Harr.	Homoptera	Cicadidae	cicada	larva in soil	C
<i>Tischeria</i> <i>castanaeella</i> Cham. (prob. not Ontario) <i>citrinipennella</i> Cham. <i>malifoliella</i> Clem.	Lepidoptera " "	Tischeriidae " "	oak leafminer oakleaf edgeminer <u>appleleaf trumpet-</u> <u>miner</u>	oak oak, chestnut fruit trees	C C C

SCIENTIFIC NAME	ORDER	FAMILY	COMMON NAME	MAIN HOST PLANT(S) OR INSECT TYPE	IMPORTANCE RATING
<i>Tolyte</i> <i>laricis</i> (Fitch)	Lepidoptera	Lasiocampidae	hairskirted caterpillar	coniferous	C
<i>velleda</i> (Stoll.)	"	"	hairskirted caterpillar	deciduous	C
<i>Tomostethus</i> <i>multicinctus</i> (Roh.)	Hymenoptera	Tenthredinidae	<u>brownheaded ash sawfly</u>	ash	C
<i>Tortricidia</i> <i>flexuosa</i> Grt.	Lepidoptera	Limacodidae	slug caterpillar	oak, maple	C
<i>pallida</i> H.-S.	"	"	" "	beech, maple	C
( <i>Tortrix</i> ) see <i>Aphelia</i>					
<i>Toumeyella</i> <i>parvicornis</i> (Cock.) (= <i>numismaticum</i> [P. & M.])	Homoptera	Coccidae	<u>pine tortoise scale</u>	jack and Scots pine	B
<i>Trachoma</i> <i>falciferella</i> Wlshm.	Lepidoptera	Plutellidae	fruittree leafroller	fruit trees	C
<i>Tremex</i> <i>columba</i> (Linn.)	Hymenoptera	Siricidae	<u>pigeon tremex</u>	deciduous	C
<i>Trachysida</i> <i>mutabilis</i> (Newn.)	Coleoptera	Cerambycidae	longhorn beetle	deciduous	C
<i>Tribolium</i> <i>castaneum</i> (Hbst.)	Coleoptera	Tenebrionidae	<u>red flour beetle</u>	household pest	G
<i>confusum</i> Duval	"	"	<u>confused flour beetle</u>	" "	G

<i>Trichiocampus</i>					
<i>gregarius</i> Dyar	Hymenoptera	Tenthredinidae	hairy poplar sawfly	poplar	C
<i>simplicornis</i> (Nort.)	"	"	hairy willow sawfly	willow	C
(= <i>irregularis</i> [Dyar])					
<i>viminalis</i> (Fall.)	"	"	hairy poplar sawfly	poplar, willow	C
<i>Trichiosoma</i>					
<i>triangulum</i> Kby.	Hymenoptera	Cimbicidae	large willow sawfly	willow	C
<i>Trichiotinus</i>					
<i>affinis</i> (G. & P.)	Coleoptera	Scarabaeidae	scarab beetle	ground plants	F
<i>assimilis</i> Kby.	"	"	" "	" "	F
<i>Trichogramma</i>					
<i>minutum</i> Riley	Hymenoptera	Trichogrammatidae	<u>minute egg parasite</u>	Lepidoptera eggs	D
<i>Trichoplusia</i>					
<i>ni</i> (Hbn.)	Lepidoptera	Noctuidae	<u>cabbage looper</u>	cabbage, flowers	F
<i>Trichoptilus</i>					
<i>lobidactylus</i> Fitch	Lepidoptera	Pterophoridae	plume moth	goldenrod	F
<i>Trichotaphe</i>					
<i>levisella</i> Fyles	Lepidoptera	Gelechiidae	aster micro moth	aster	F
<i>setosella</i> Clem.	"	"	micro moth	cedar, pine	C
<i>Trisetacus</i>					
<i>alborum</i> Keifer	Acarina	Eriophyidae	white pine needle- sheath mite	white pine	C
<i>ehamanni</i> Keifer	"	"	jack pine needle- sheath mite	jack pine	C
<i>grosmanni</i> Keifer	"	"	fir bud mite	balsam fir, spruce, red pine	C

SCIENTIFIC NAME	ORDER	FAMILY	COMMON NAME	MAIN HOST PLANT(S) OR INSECT TYPE	IMPORTANCE RATING
<i>Trishormomya</i> <i>canadensis</i> (Felt)	Diptera	Cecidomyiidae	juneberry lippedgall midge	serviceberry	C
<i>crataegifolia</i> (Felt)	"	"	coxcombgall midge	hawthorn	C
<i>salicisverruca</i> (O. & S.)	"	"	willow lippedgall midge	willow	C
<i>Trypodendron</i> <i>betulae</i> Sw.	Coleoptera	Scolytidae	birch ambrosia beetle	birch	C
<i>lineatum</i> (Oliv.)	"	"	<u>striped ambrosia</u> beetle	coniferous	C
<i>retusum</i> (Lec.)	"	"	poplar ambrosia beetle	poplar	C
<i>rufitarsis</i> (Kby.)	"	"	conifer ambrosia beetle	spruce, pine	C
<i>Typocerus</i> <i>velutinus</i> (Oliv.)	Coleoptera	Cerambycidae	longhorned beetle	dead wood	C
<i>Upis</i> <i>ceramboides</i> (Linn.)	Coleoptera	Tenebrionidae	roughened darkling beetle	deciduous	C
<i>Urocerus</i> <i>albicornis</i> (F.)	Hymenoptera	Siricidae	black horntail	coniferous	C
<i>flavicornis</i> (F.)	"	"	black and red horn- tail	"	C
<i>Valentinia</i> <i>glandulella</i> (Riley)	Lepidoptera	Blastobasidae	acorn moth	oak	C
<i>Vanessa</i> (see also <i>Cynthia</i> ) <i>atalanta</i> (Linn.)	Lepidoptera	Nymphalidae	<u>red admiral</u>	nettles	F

<i>Vasates</i>					
<i>aceris-crumena</i> (Riley)	Acarina	Eriophyidae	maple spindlegall mite	maple	C
<i>quadripes</i> (Shim.)	"	"	<u>maple bladdergall</u> <u>mite</u>	maple	C
<i>Venusia</i>					
<i>cambrica</i> Curt.	Lepidoptera	Geometridae	alder looper	alder	C
<i>comptaria</i> Wlk.	"	"	" "	"	C
<i>(Vespamima)</i> see <i>Synanthedon</i>					
<i>Vespula</i>					
<i>diabolica</i> (Sauss.)	Hymenoptera	Vespidae	yellowjacket	predator	D
<i>maculata</i> (Linn.)	"	"	<u>baldfaced hornet</u>	"	D
<i>Winnertzia</i>					
<i>hudsonici</i> Felt	Diptera	Cecidomyiidae	fringed cupgall midge	hawthorn	C
<i>Xanthia</i>					
<i>lutea</i> (Strom.)	Lepidoptera	Noctuidae	pink-barred sawfly	deciduous	C
<i>Xanthonia</i>					
<i>decemnotata</i> (Say)	Coleoptera	Chrysomelidae	tenspotted leaf beetle	birch, hazel	C
<i>Xanthoteras</i>					
<i>forticorne</i> (O.S.)	Hymenoptera	Cynipidae	oak figgall wasp	oak	C
<i>Xanthotype</i>					
<i>sospeta</i> Dru.	Lepidoptera	Geometridae	crocus geometer	deciduous	C
<i>urticaria</i> Swett	"	"	" "	maple	C

SCIENTIFIC NAME	ORDER	FAMILY	COMMON NAME	MAIN HOST PLANT(S) OR INSECT TYPE	IMPORTANCE RATING
<i>Xerophylla</i> (= <i>Phylloxera</i> )					
<i>caryaecaulis</i> (Fitch)	Homoptera	Adelgidae	hickory gall adelgid	hickory	C
<i>caryaeglobuli</i> (Walsh)	"	"	globular hickory gall adelgid	"	C
<i>foveola</i> (Perg.)	"	"	hickory buttongall adelgid	"	C
<i>vitifoliae</i> (Fitch)	"	"	hickory gall adelgid	"	C
<i>Xyela</i>					
<i>minor</i> Nort.	Hymenoptera	Xyelidae	pine flower sawfly	pine flowers	C
<i>Xylena</i>					
<i>cineritia</i> (Grt.)	Lepidoptera	Noctuidae	swordgrass moth	deciduous	C
<i>curvimacula</i> (Morr.)	"	"	dot-and-dash sword- grass moth	"	C
<i>nupera</i> (Lint.)	"	"	red swordgrass moth	"	C
<i>Xylococculus</i>					
<i>betulae</i> (Perg.)	Homoptera	Coccidae	birch scale	birch	C
<i>Xylomyges</i>					
<i>dolosa</i> Grt.	Lepidoptera	Noctuidae	lined black aspen caterpillar	aspen	C
<i>Xylotrechus</i>					
<i>aceris</i> Fisher	Coleoptera	Cerambycidae	<u>gallmaking maple</u> <u>borer</u>	maple	C
<i>obliteratus</i> LeC.	"	"	poplar butt borer	poplar	C
<i>undulatus</i> (Say)	"	"	conifer zebra beetle	coniferous	C
<i>Yponomeuta</i>					
<i>cognatella</i> Hbn.	Lepidoptera	Yponomeutidae	euonymus moth	euonymus	C
<i>multipunctella</i> Clem.	"	"	" "	"	C

## Zale

<i>aeruginosa</i> (Gn.)	Lepidoptera	Noctuidae	large false looper	jack pine	C
<i>duplicata</i> (Bethune)	"	"	pine false looper	pine	C
<i>duplicata largera</i> Sm.	"	"	" " "	"	C
<i>galbanata</i> (Morr.)	"	"	maple false looper	maple	C
<i>helata</i> (Sm.)	"	"	white pine false looper	pine	C
<i>horrida</i> Hbn.	"	"	large false looper	unknown	C
<i>metatoides</i> McD.	"	"	jack pine false looper	jack pine	C
<i>minerea</i> (Gn.)	"	"	large false looper	deciduous	C
<i>minera norda</i> Sm.	"	"	" " "	"	C
<i>obliqua</i> Gn.	"	"	jack pine false looper	pine	C
<i>squamularis</i> Dru.	"	"	large false looper	pine	C
<i>submediana</i> Strand	"	"	pine false looper	"	C
<i>undularis</i> (Dru.)	"	"	locust false looper	locust	C
<i>unilineata</i> (Grt.)	"	"	large false looper	unknown, prob. locust	C

## Zanclognatha

<i>cruralis</i> Gn.	Lepidoptera	Noctuidae	owlet moth	unknown	C
<i>jacchusalis</i> Wlk.	"	"	" "	"	C
<i>laevigata</i> Grt.	"	"	" "	yellow birch	C
<i>minoralis</i> Sm.	"	"	" "	spruce, balsam fir	C
<i>protummusalis</i> Wlk.	"	"	" "	coniferous	C
<i>theralis</i> Wlk.	"	"	" "	unknown	C

## Zaraea

<i>americana</i> Cress.	Hymenoptera	Cimbicidae	sawfly	deciduous	C
<i>inflata</i> Nort.	"	"	honeysuckle sawfly	honeysuckle	C

## Zeiraphera

<i>canadensis</i> Mut. & Free.	Lepidoptera	Olethreutidae	<u>spruce bud moth</u>	spruce	B
<i>destitutana</i> (Walker)	"	"	purplestriped shootworm	"	C

SCIENTIFIC NAME	ORDER	FAMILY	COMMON NAME	MAIN HOST PLANT(S) OR INSECT TYPE	IMPORTANCE RATING
<i>Zeiraphera</i> <i>diniana</i> Gn. (not Cdn. see <i>Z. improbana</i> ) <i>fortunana</i> Kft.	Lepidoptera	Olethreutidae	lesser yellow spruce shootworm	spruce	C
<i>improbana</i> (Walker) <i>ratzeburgiana</i> Ratz. (not cdn. see <i>Z. canadensis</i> )	"	"	larch needleworm	larch, spruce	C
<i>Zelleria</i> <i>hainbachi</i> Busck	Lepidoptera	Yponomeutidae	<u>pine needle sheath-</u> <u>miner</u>	jack pine	C
<i>Zelus</i> <i>audax</i> Banks	Hemiptera	Reduviidae	assassin bug	predator	D
<i>Zeugophora</i> <i>abnormis</i> Lec.	Coleoptera	Chrysomelidae	poplar blackmine beetle	poplar	C
<i>scutellaris</i> Suffr.	"	"	poplar blackmine beetle	"	C
<i>varians</i> Cr.	"	"	poplar blackmine beetle	"	C



## SELECTED BIBLIOGRAPHY

- BAKER, W.L. 1972. Eastern forest insects. USDA For. Serv., Misc. Publ. No. 1175. 642 p.
- BENOIT, P., *Ed. and Comp.* 1975. French names of insects in Canada. Que. Soc. Prot. Plants/Dep. Agric. Que. 214 p.
- BORROR, D.J., DELONG, D.M. and TRIPLEHORN, C.A. 1976. An introduction to the study of insects. Holt, Rinehart and Winston, Toronto, Ont. 852 p.
- BRIGHT, D.E., JR. 1976. The insects and arachnids of Canada, Part 2. The bark beetles of Canada and Alaska. Biosystematics Res. Inst., Can. Dep. Agric., Ottawa, Ont. 241 p.
- DAVIDSON, A.G., *Comp.* 1980. Insect catalogue. Forest Insect and Disease Survey. Dep. Environ., Can. For. Serv., Ottawa, Ont. Unpubl. Cat. 304 p.
- DILLON, E.S. and DILLON, L.S. 1961. A manual of common beetles of eastern North America. Row, Peterson and Co., Evanston, Ill., Elmsford, N.Y. 884 p.
- DOMINICK, R.B., DOMINICK, T., FERGUSON, D.C., FRANCLEMONT, J.G., HODGES, R.W. and MUNROE, E.G., *Ed.* 1971- The moths of America north of Mexico including Greenland. E.W. Classey Ltd. and The Wedge Entomological Research Foundation, London, England. (11 fascicles to date)
- FELT, E.P. 1940. Plant galls and gall makers. Comstock Publ. Co. Inc. Ithaca, N.Y. 364 p.
- FORBES, W.T.M. 1923. The Lepidoptera of New York and neighboring states. Cornell Univ. Agric. Exp. Stn., Mem. 68. 729 p.
- FORBES, W.T.M. 1948. Lepidoptera of New York and neighboring states. Part II. Cornell Univ. Agric. Exp. Stn., Mem. 274. 263 p.
- FORBES, W.T.M. 1954. Lepidoptera of New York and neighboring states, Part III. Cornell Univ. Agric. Exp. Stn., Mem. 329. 433 p.
- FORBES, W.T.M. 1960. Lepidoptera of New York and neighboring states, Part IV. Cornell Univ. Agric. Exp. Stn., Mem. 371. 188 p.
- HEDLIN, A.F., YATES, H.O. III, TOVAR, D.C., EBEL, B.H., KOERBER, T.W. and MERKEL, E.P. 1980. Cone and seed insects of North American conifers. Dep. Environ., Can. For. Serv., Ottawa, Ont. 122 p.
- HOLLAND, W.J. 1968. The moth book. Dover Publ. Inc., New York, N.Y. 479 p.

- HOWE, W.H., *Ed.* 1975. The butterflies of North America. Doubleday and Co. Inc., Garden City, N.Y. 633 p.
- KLOTS, A.B. 1951. A field guide to the butterflies of North America, east of the Great Plains. Houghton Mifflin Co., Boston, Mass. 349 p.
- KROMBEIN, K.V., HURD, P.D., JR., SMITH, D.R. and BURKS, B.D. 1979. Catalog of hymenoptera in America north of Mexico, Smithsonian Inst. Press, Washington, D.C. 3 vol. 2735 p.
- LENG, C.W. 1920. Catalogue of the coleoptera of America, north of Mexico. The Cosmos Press, Cambridge, Mass. 470 p.
- LUTZ, F.E. 1935. Field book of insects. G.P. Putman's Sons, New York. 510 p.
- MCGUGAN, B.M., *Comp.* 1958. Forest lepidoptera of Canada, Vol. I. Dep. Agric., For. Biol. Div., Ottawa, Ont., Publ. 1034. 76 p.
- PRENTICE, R.M., *Comp.* 1962. Forest lepidoptera of Canada, Vol. 2. Dep. For., Bull. 128. p. 77-281.
- PRENTICE, R.M., *Comp.* 1963. Forest lepidoptera of Canada, Vol. 3. Dep. For., Publ. 1013. p. 282-543.
- PRENTICE, R.M., *Comp.* 1965. Forest lepidoptera of Canada, Vol. 4. Dep. For., Publ. 1142. p. 544-840.
- ROSE, A.H. and LINDQUIST, O.H. 1973. Insects of eastern pines. Dep. Environ., Can. For. Serv., Ottawa, Ont., Publ. 1313. 127 p.
- ROSE, A.H. and LINDQUIST, O.H. 1977. Insects of eastern spruces, fir and hemlock. Dep. Environ., Can. For. Serv., Ottawa, Ont. For. Tech. Rep. 23. 159 p.
- ROSE, A.H. and LINDQUIST, O.H. 1980. Insects of eastern larch, cedar and juniper. Dep. Environ., Can. For. Serv., Ottawa, Ont., For. Tech. Rep. 28. 100 p.
- ROSE, A.H. and LINDQUIST, O.H. 1981. Insects of eastern hardwood trees. Dep. Environ., Can. For. Serv., Ottawa, Ont. (in press)
- STONE, A., SABROSKY, C.W., WIRTH, W.W., FOOTE, R.H. and COULSON, J.R. 1965. A catalog of the diptera of America north of Mexico. USDA, Agric. Handb. No. 276. 1696 p.
- SUTHERLAND, D.W.S., *Chairman.* 1978. Common names of insects and related organisms. Ent. Soc. Am., Spec. Publ. 78-1. 132 p.